



Mount Thorley Warkworth EPL Monitoring Data

Published 23 April 2021
FOR THE MONTH ENDING 31 March 2021

Name of Operation	Mount Thorley Coal Loader
Environment Protection Licence	24
Licensee	Mount Thorley Coal Loading Ltd
Premises	Mount Thorley Coal Loading Ltd Mount Thorley Road, Mount Thorley Via Singleton NSW 2330
EPL Link	http://app.epa.nsw.gov.au/prpoeoapp/ViewPOEOLicence.aspx?DOCID=89660&SYSUID=1&LICID=24
Name of Operation	Mount Thorley Operations
Environment Protection Licence	1976
Licensee	Mount Thorley Operations Pty Limited
Premises	Mount Thorley Operations Mount Thorley Road Mount Thorley NSW 2330
EPL Link	https://apps.epa.nsw.gov.au/prpoeoapp/ViewPOEOLicence.aspx?DOCID=161559&SYSUID=1&LICID=1976
Name of Operation	Warkworth Coal Mine
Environment Protection Licence	1376
Licensee	Warkworth Mining Ltd
Premises	Warkworth Coal Mine Putty Road Mount Thorley NSW 2330
EPL Link	https://apps.epa.nsw.gov.au/prpoeoapp/ViewPOEOLicence.aspx?DOCID=160262&SYSUID=1&LICID=1376

1 INTRODUCTION

This report provides a summary of environmental monitoring results for Mount Thorley Warkworth (MTW) in accordance with the requirements of the following Environment Protection Licences (EPL):

- EPL24 – Mount Thorley Coal Loader (MTCL);
- EPL1376 – Warkworth Mining Limited (WML); and
- EPL1976 – Mount Thorley Operations (MTO).

This report includes all monitoring data collected in accordance with the above licences for the period 1 to 31 March 2021.

Monitoring in this report includes:

- Air quality monitoring;
- Surface water monitoring including mine water discharge and effluent quality; and
- Blast monitoring.

Monitoring locations are shown in **Figure 1**.

2 AIR QUALITY

In accordance with the requirements of Condition M2.2 of WML EPL 1376 and MTO EPL 1976, MTW maintains a network of five PM₁₀ monitors.

Results of Particulates (PM₁₀) monitoring are shown in **Table 1**. Results reported represent the 24hr average PM₁₀, derived from 10 minute PM₁₀ values for the period midnight to midnight, for each calendar date during the reporting period. The last sampling date was 31 March 2021 and the data was obtained on 1 April 2021.

TABLE 1: PARTICULATE MATTER <10µM MONITORING

Date	Unit of Measure	Monitoring Frequency & Capture	Monitoring Point				
			Warkworth North (EPA ID # 9 - WML EPL 1376)	MTO Boundary (EPA ID # 13 - MTO EPL 1976)	Dragline Crossing (EPA ID # 10 - WML EPL 1376 & MTO EPL 1976)	Heavy Vehicle Bridge (EPA ID # 11 - WML EPL 1376 & MTO EPL 1976)	MTIE (EPA ID # 12 - WML EPL 1376 & EPA ID #19 - MTO EPL 1976)
1/03/2021	µg/m ³	Continuous	31.9	23.8	38.7	40.1	37.1
2/03/2021	µg/m ³		20.5	10.2	14.3	24.7	20.9
3/03/2021	µg/m ³		13.1	8.4	7.7	11.0	11.6
4/03/2021	µg/m ³		11.3	4.7	15.0	8.8	8.9
5/03/2021	µg/m ³		13.4	7.5	19.5	22.7	15.9
6/03/2021	µg/m ³		12.7	6.2	7.4	12.0	11.0
7/03/2021	µg/m ³		16.4	5.8	9.1	11.0	9.5
8/03/2021	µg/m ³		10.4	6.0	16.6	13.5	12.8
9/03/2021	µg/m ³		8.7	6.8	19.1	13.5	11.1
10/03/2021	µg/m ³		13.6	5.4	8.3	13.7	11.2
11/03/2021	µg/m ³		10.5	3.8	6.7	11.7	8.5
12/03/2021	µg/m ³		13.5	7.5	12.5	10.7	10.8
13/03/2021	µg/m ³		11.0	8.9	25.7	19.4	18.6
14/03/2021	µg/m ³		7.2	3.4	3.6	7.2	6.6
15/03/2021	µg/m ³		7.8	4.2	3.0	7.2	5.8
16/03/2021	µg/m ³		8.0	2.7	2.8	6.8	6.1
17/03/2021	µg/m ³		6.9	3.4	3.7	7.9	6.4
18/03/2021	µg/m ³		3.4	0.7	1.2	3.4	2.6
19/03/2021	µg/m ³		8.1	3.7	3.2	7.0	6.2
20/03/2021	µg/m ³		2.6	1.7	0.9	4.5	4.0
21/03/2021	µg/m ³		3.8	3.3	0.5	6.9	6.3
22/03/2021	µg/m ³		3.0	2.4	0.3	5.0	4.3
23/03/2021	µg/m ³		5.2	1.8	0.8	2.7	2.0

MTW EPL Monitoring Data
FOR THE MONTH ENDING 31 March 2021

Date	Unit of Measure	Monitoring Frequency & Capture	Monitoring Point				
			Warkworth North (EPA ID # 9 - WML EPL 1376)	MTO Boundary (EPA ID # 13 - MTO EPL 1976)	Dragline Crossing (EPA ID # 10 - WML EPL 1376 & MTO EPL 1976)	Heavy Vehicle Bridge (EPA ID # 11 - WML EPL 1376 & MTO EPL 1976)	MTIE (EPA ID # 12 - WML EPL 1376 & EPA ID #19 - MTO EPL 1976)
24/03/2021	µg/m ³		2.8	5.0	8.4	4.8	5.1
25/03/2021	µg/m ³		4.5	6.0	11.7	10.3	8.8
26/03/2021	µg/m ³		5.1	4.9	15.4	15.4	13.1
27/03/2021	µg/m ³		5.5	5.5	13.5	13.4	10.1
28/03/2021	µg/m ³		6.2	5.0	10.8	13.6	9.1
29/03/2021	µg/m ³		10.4	4.5	3.2	9.2	5.6
30/03/2021	µg/m ³		12.4	7.3	4.9	11.2	8.5
31/03/2021	µg/m ³		10.5	6.3	3.8	10.1	7.3
Monthly Meaningful Data							
March	µg/m ³	Minimum*	2.6	0.7	0.3	2.7	2.0
March	µg/m ³	Mean*	9.7	5.7	9.4	11.6	9.9
March	µg/m ³	Maximum*	31.9	23.8	38.7	40.1	37.1
March	µg/m ³	Median*	8.7	5.0	7.7	10.7	8.8

24 hour data unavailable due to equipment or communications issue causing one or more missing 10 minute values

*Data calculated with missing 10 minute value(s) due to equipment or communication issue

MTIE denotes Mount Thorley Industrial Estate

3 SURFACE WATER

3.1 Mine Water Discharge Monitoring

MTW participates in the Hunter River Salinity Trading Scheme (HRSTS) and maintains two monitoring locations associated with this scheme.

Results of water monitoring undertaken in accordance with HRSTS requirements are detailed in **Table 2** and **Table 3**. The last sampling date was 1 April 2021 (HRSTS block at MTO commenced 31 March 2021 5pm and was completed 1 April 2021 5pm) and the data was obtained on 16 April 2021.

TABLE 2: MINE WATER DISCHARGE MONITORING - VOLUME AND MASS LIMITS

Monitoring Location	Unit of measure	Volume/mass Limit	No. of samples required by licence	No. of samples you collected and analysed	Lowest Sample Value	Mean of sample	Highest sample value	Median
Dam 1N Discharge / Point 1 (WML EPL 1376) Dam 1N Discharge Point	Megalitres per day	100	0	0	-	-	-	-
Dam 9S Discharge / EPL Point 4 (MTO EPL 1976) Discharge pipe from Dam 9S	Megalitres per day	100	14	14*	0.7*	45.1*	75.2*	49.2*

Note: Reported discharge volume data is based on HRSTS 24-hour discharge block totals, at the relevant discharge point.

** 5 missing 5-minute values over 14 discharge blocks due to equipment or communications issue. Data calculated with missing 5-minute value(s).*

TABLE 3: MINE WATER DISCHARGE MONITORING- CONCENTRATION LIMITS

Discharge Point	Pollutant	Unit of measure	Licence limits	No. of samples required by licence	No. of samples you collected and analysed	Lowest Sample Value	Mean of sample	Highest sample value	Median
Dam 1N Discharge / Point 1 (WML EPL 1376) Dam 1N Discharge Point	Electrical Conductivity	microsiemens per centimetre	-	0	0	-	-	-	-
	pH	pH	6.5 - 9.0	0	0	-	-	-	-
	Total Suspended Solids	milligrams per litre	120	0	0	-	-	-	-
Dam 1N Discharge Turbidity Monitoring / Point 25 (WML EPL 1376) Continuous turbidity monitor	Turbidity	nephelometric turbidity units	-	0	0	-	-	-	-
Dam 9S Discharge / EPL Point 4 (MTO EPL 1976) Discharge pipe from Dam 9	Electrical Conductivity	microsiemens per centimetre	-	Continuous	Continuous*	5625*	6020*	6439*	5895*
	pH	pH	6.5 - 9.0	14	14	8.9	9.0	9.1	9.0
	Total Suspended Solids	milligrams per litre	120	14	14	5.0	24.6	54.0	24.0

* 5 missing 5-minute values over 14 discharge blocks due to equipment or communications issue. Data calculated with missing 5-minute value(s).

3.2 Water Quality Monitoring

MTW undertakes monitoring in accordance with Condition M2.3 of WML EPL 1376 and MTO EPL 1976 as detailed in **Table 4**. Monthly and quarterly sampling occurred 11 March 2021 and the data was obtained 12 April 2021.

TABLE 4: WATER QUALITY MONITORING

Monitoring Location	Pollutant	unit of measure	Monitoring frequency required by licence	No. of samples required by licence	No. of samples collected and analysed	Value
W5 – Loders Creek / EPL Point 3 (MTO EPL 1976) Coal preparation plant access road bridge	Electrical Conductivity	microsiemens per centimetre	Once a month (min. of 4 weeks)	1	1	1498
	pH	pH units	Once a month (min. of 4 weeks)	1	1	7.7
	Total Suspended Solids	milligrams per litre	Once a month (min. of 4 weeks)	1	1	70
W1 – Hunter River / EPL Point 26 (WML EPL 1376)	Electrical Conductivity	microsiemens per centimetre	Once a quarter	1	0	#
	pH	pH units	Once a quarter	1	0	#
	Total Suspended Solids	milligrams per litre	Once a quarter	1	0	#
W2 – Hunter River / EPL Point 27 (WML EPL 1376)	Electrical Conductivity	microsiemens per centimetre	Once a quarter	1	1	1761
	pH	pH units	Once a quarter	1	1	7.8
	Total Suspended Solids	milligrams per litre	Once a quarter	1	1	53
W3 – Hunter River / EPL Point 28 (WML EPL 1376)	Electrical Conductivity	microsiemens per centimetre	Once a quarter	1	0	#
	pH	pH units	Once a quarter	1	0	#

MTW EPL Monitoring Data
FOR THE MONTH ENDING 31 March 2021

Monitoring Location	Pollutant	unit of measure	Monitoring frequency required by licence	No. of samples required by licence	No. of samples collected and analysed	Value
	Total Suspended Solids	milligrams per litre	Once a quarter	1	0	#
W5 – Loders Creek / EPL Point 29 (WML EPL 1376)	Electrical Conductivity	microsiemens per centimetre	Once a quarter	1	1	1498
	pH	pH units	Once a quarter	1	1	7.7
	Total Suspended Solids	milligrams per litre	Once a quarter	1	1	70
WW5 – Dights Creek / EPL Point 30 (WML EPL 1376)	Electrical Conductivity	microsiemens per centimetre	Once a quarter	1	1	95
	pH	pH units	Once a quarter	1	1	7.0
	Total Suspended Solids	milligrams per litre	Once a quarter	1	1	14
SW40 – Wollombi Brook Downstream / EPL Point 31 (WML EPL 1376)	Electrical Conductivity	microsiemens per centimetre	Once a quarter	1	1	378
	pH	pH units	Once a quarter	1	1	7.1
	Total Suspended Solids	milligrams per litre	Once a quarter	1	1	<5
Wollombi Brook / EPL Point 32 (WML EPL 1376)	Electrical Conductivity	microsiemens per centimetre	Once a quarter	1	1	385
	pH	pH units	Once a quarter	1	1	7.0
	Total Suspended Solids	milligrams per litre	Once a quarter	1	1	<5
Wollombi Brook Upstream / EPL Point 33 (WML EPL 1376)	Electrical Conductivity	microsiemens per centimetre	Once a quarter	1	1	379
	pH	pH units	Once a quarter	1	1	7.0
	Total Suspended Solids	milligrams per litre	Once a quarter	1	1	8

- Sample unable to be collected due to insufficient water or unsafe access

3.3 Effluent Quality Monitoring

Monitoring is undertaken in accordance with Condition M2.3 of WML EPL 1376 and MTO EPL 1976 as detailed in **Table 5**. Quarterly sampling occurred 23 March 2021 and the data was obtained 12 April 2021.

TABLE 5: EFFLUENT QUALITY MONITORING

Monitoring Location	Pollutant	unit of measure	Monitoring frequency required by licence	No. of samples required by licence	No. of samples collected and analysed	Value
North Pit North Crib Hut Envirocycle / EPL Point 14 (WML EPL 1376)	Faecal Coliforms	Colony forming units per 100 millilitres	Once a quarter	1	1	~550
	pH	pH units	Once a quarter	1	1	7.3
Main Warkworth Staging Pond / EPL Point 15 (WML EPL 1376)	Faecal Coliforms	Colony forming units per 100 millilitres	Once a quarter	1	1	23000
	pH	pH units	Once a quarter	1	1	8.6
Warkworth Admin Envirocycle / EPL Point 16 (WML EPL 1376)	Faecal Coliforms	Colony forming units per 100 millilitres	Once a quarter	1	1	440000
	pH	pH units	Once a quarter	1	1	7.37
West Pit South Crib Hut Envirocycle / EPL Point 17 (WML EPL 1376)	Faecal Coliforms	Colony forming units per 100 millilitres	Once a quarter	1	1	1500
	pH	pH units	Once a quarter	1	1	8
Warkworth Medical Centre Envirocycle / EPL Point 18 (WML EPL 1376)	Faecal Coliforms	Colony forming units per 100 millilitres	Once a quarter	1	1	~10
	pH	pH units	Once a quarter	1	1	3.9
Dam 1S / EPL Point 18 (MTO EPL 1976)	Faecal Coliforms	Colony forming units per 100 millilitres	Once a quarter	1	1	910
	pH	pH units	Once a quarter	1	1	9.2

4 BLAST MONITORING

In accordance with the requirements of Conditions M7.1 (WML EPL 1376) and M8.1 (MTO EPL 1976), MTW maintains a network of blast monitors to measure airblast overpressure and ground vibration for all blasts carried out at MTW. Blast monitoring results are detailed in **Table 6** (Airblast Overpressure) and **Table 7** (Ground Vibration). The last date sampled was on 31 March 2021. The data was obtained on 1 April 2021.

TABLE 6: BLAST MONITORING (AIRBLAST OVERPRESSURE)

Blast ID	Date and Time	Unit of Measure	Monitoring Frequency & Capture	EPL Limits		Monitoring Point				
				95% of Blasts	100% of Blasts	Bulga Village EPA ID # 6 (EPL 1376) & EPA ID # 7 (EPL 1976)	Wambo Road EPA ID # 5 (EPL 1376) & EPA ID # 6 (EPL 1976)	Putty Rd MTIE EPA ID # 8 (EPL 1376) & EPA ID # 9 (EPL 1976)	Warkworth EPA ID # 4 (EPL 1376) & EPA ID # 5 (EPL 1976)	Wollemi Peak Road EPA ID # 7 (EPL 1376) & EPA ID # 8 (EPL 1976)
n37-bfa-md5	2/03/2021 13:09	dB(L)	All Blasts 100%	115	120	100.4	100.0	101.2	103.2	98.4
n39-whh-ptg	4/03/2021 12:24	dB(L)		115	120	99.5	92.4	87.6	97.0	88.7
n47-rcd-ps1	4/03/2021 12:25	dB(L)		115	120	95.7	103.6	88.5	89.7	90.7
n41-gmb-pr7	10/03/2021 10:48	dB(L)		115	120	103.0	101.7	101.1	109.8	98.9
w30-wwe-ps4 & w31-wwe-ps1	10/03/2021 12:18	dB(L)		115	120	103.8	89.1	95.7	88.8	90.6
n37-bfb-j-co2 & n37-wwa-ptg2	11/03/2021 13:50	dB(L)		115	120	94.8	94.7	114.5	108.5	90.8
n47-wyc-pr1	16/03/2021 15:10	dB(L)		115	120	99.0	106.1	102.5	108.4	92.0
n41-gmb-pr8 & n41-gmb-ps7	18/03/2021 11:02	dB(L)		115	120	99.3	104.2	98.2	112.2	97.0
w42-bla-ptg1	19/03/2021 10:26	dB(L)		115	120	95.6	97.0	89.9	105.2	87.9

MTW EPL Monitoring Data
FOR THE MONTH ENDING 31 March 2021

Blast ID	Date and Time	Unit of Measure	Monitoring Frequency & Capture	EPL Limits		Monitoring Point				
				95% of Blasts	100% of Blasts	Bulga Village EPA ID # 6 (EPL 1376) & EPA ID # 7 (EPL 1976)	Wambo Road EPA ID # 5 (EPL 1376) & EPA ID # 6 (EPL 1976)	Putty Rd MTIE EPA ID # 8 (EPL 1376) & EPA ID # 9 (EPL 1976)	Warkworth EPA ID # 4 (EPL 1376) & EPA ID # 5 (EPL 1976)	Wollemi Peak Road EPA ID # 7 (EPL 1376) & EPA ID # 8 (EPL 1976)
w30-wwf-mma-co & w30-wwf-maa-ptg	24/03/2021 14:53	dB(L)		115	120	109.7	89.7	110.2	114.0	101.2
n41-gmb-ps8	25/03/2021 10:51	dB(L)		115	120	96.8	102.9	106.1	102.9	94.6
n47-rcd-ps2	31/03/2021 13:21	dB(L)		115	120	97.1	98.0	89.6	105.8	96.9
n47-wyc-pr2	31/03/2021 13:22	dB(L)		115	120	98.0	99.3	94.7	105.8	95.5
Monthly Meaningful Data										
Minimum	March	dB(L)		115	120	94.8	89.1	87.6	88.8	87.9
Mean	March	dB(L)		115	120	99.4	98.4	98.5	103.9	94.1
Maximum	March	dB(L)		115	120	109.7	106.1	114.5	114.0	101.2
Median	March	dB(L)		115	120	99.0	99.3	98.2	105.8	94.6

TABLE 7: BLAST MONITORING (GROUND VIBRATION)

Blast ID	Date and Time	Unit of Measure	Monitoring Frequency & Capture	EPL Limits		Monitoring Point				
				95% of Blasts	100% of Blasts	Bulga Village EPA ID # 6 (EPL 1376) & EPA ID # 7 (EPL 1976)	Wambo Road EPA ID # 5 (EPL 1376) & EPA ID # 6 (EPL 1976)	Putty Rd MTIE EPA ID # 8 (EPL 1376) & EPA ID # 9 (EPL 1976)	Warkworth EPA ID # 4 (EPL 1376) & EPA ID # 5 (EPL 1976)	Wollemi Peak Road EPA ID # 7 (EPL 1376) & EPA ID # 8 (EPL 1976)
n37-bfa-md5	2/03/2021 13:09	mm/s	All Blasts 100%	5	10	1.30	1.42	0.23	3.52	0.73
n39-whh-ptg	4/03/2021 12:24	mm/s		5	10	0.32	0.06	0.02	0.75	0.06
n47-rcd-ps1	4/03/2021 12:25	mm/s		5	10	0.32	0.29	0.13	0.28	0.32
n41-gmb-pr7	10/03/2021 10:48	mm/s		5	10	1.57	2.35	0.25	1.53	1.41
w30-wwe-ps4 & w31-wwe-ps1	10/03/2021 12:18	mm/s		5	10	0.57	0.51	0.20	0.73	0.46
n37-bfb-j-co2 & n37-wwa-ptg2	11/03/2021 13:50	mm/s		5	10	0.10	0.09	0.03	0.20	0.06
n47-wyc-pr1	16/03/2021 15:10	mm/s		5	10	0.24	0.29	0.04	0.57	0.12
n41-gmb-pr8 & n41-gmb-ps7	18/03/2021 11:02	mm/s		5	10	1.36	2.36	0.22	1.35	1.09
w42-bla-ptg1	19/03/2021 10:26	mm/s		5	10	0.08	0.07	0.03	0.20	0.08
w30-wwf-mma-co & w30-wwf-maa-ptg	24/03/2021 14:53	mm/s		5	10	0.13	0.12	0.08	0.33	0.07
n41-gmb-ps8	25/03/2021 10:51	mm/s		5	10	0.18	0.43	0.06	1.01	0.14
n47-rcd-ps2	31/03/2021 13:21	mm/s		5	10	0.41	0.87	0.13	0.53	0.41
n47-wyc-pr2	31/03/2021 13:22	mm/s		5	10	0.28	0.27	0.04	0.72	0.13

MTW EPL Monitoring Data
FOR THE MONTH ENDING 31 March 2021

Blast ID	Date and Time	Unit of Measure	Monitoring Frequency & Capture	EPL Limits		Monitoring Point				
				95% of Blasts	100% of Blasts	Bulga Village EPA ID # 6 (EPL 1376) & EPA ID # 7 (EPL 1976)	Wambo Road EPA ID # 5 (EPL 1376) & EPA ID # 6 (EPL 1976)	Putty Rd MTIE EPA ID # 8 (EPL 1376) & EPA ID # 9 (EPL 1976)	Warkworth EPA ID # 4 (EPL 1376) & EPA ID # 5 (EPL 1976)	Wollemi Peak Road EPA ID # 7 (EPL 1376) & EPA ID # 8 (EPL 1976)
Monthly Meaningful Data										
Minimum	March	mm/s		5	10	0.08	0.06	0.02	0.20	0.06
Mean	March	mm/s		5	10	0.53	0.70	0.11	0.90	0.39
Maximum	March	mm/s		5	10	1.57	2.36	0.25	3.52	1.41
Median	March	mm/s		5	10	0.32	0.29	0.08	0.72	0.14

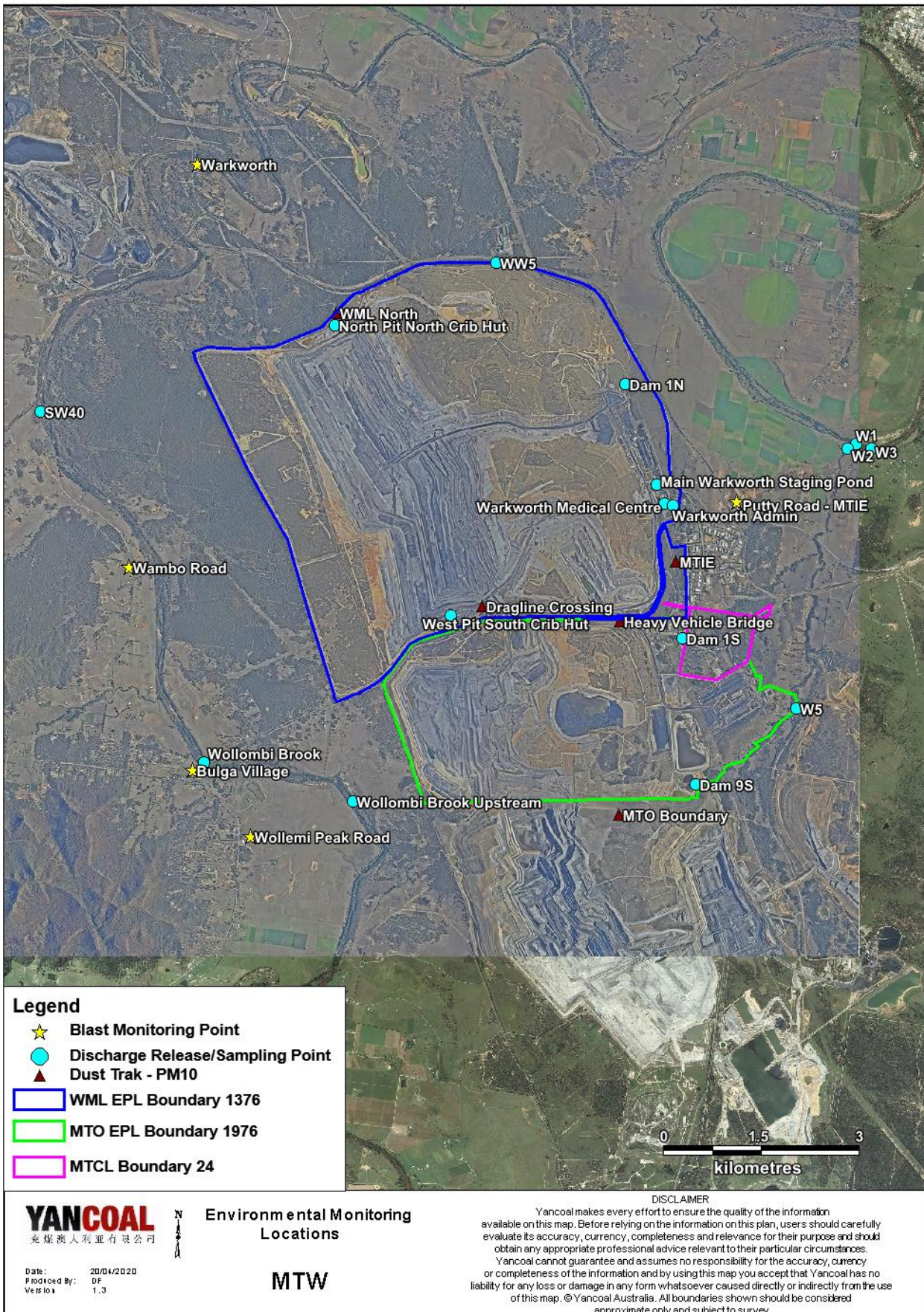


Figure 1 : Mount Thorley Warkworth Environmental Monitoring Locations