

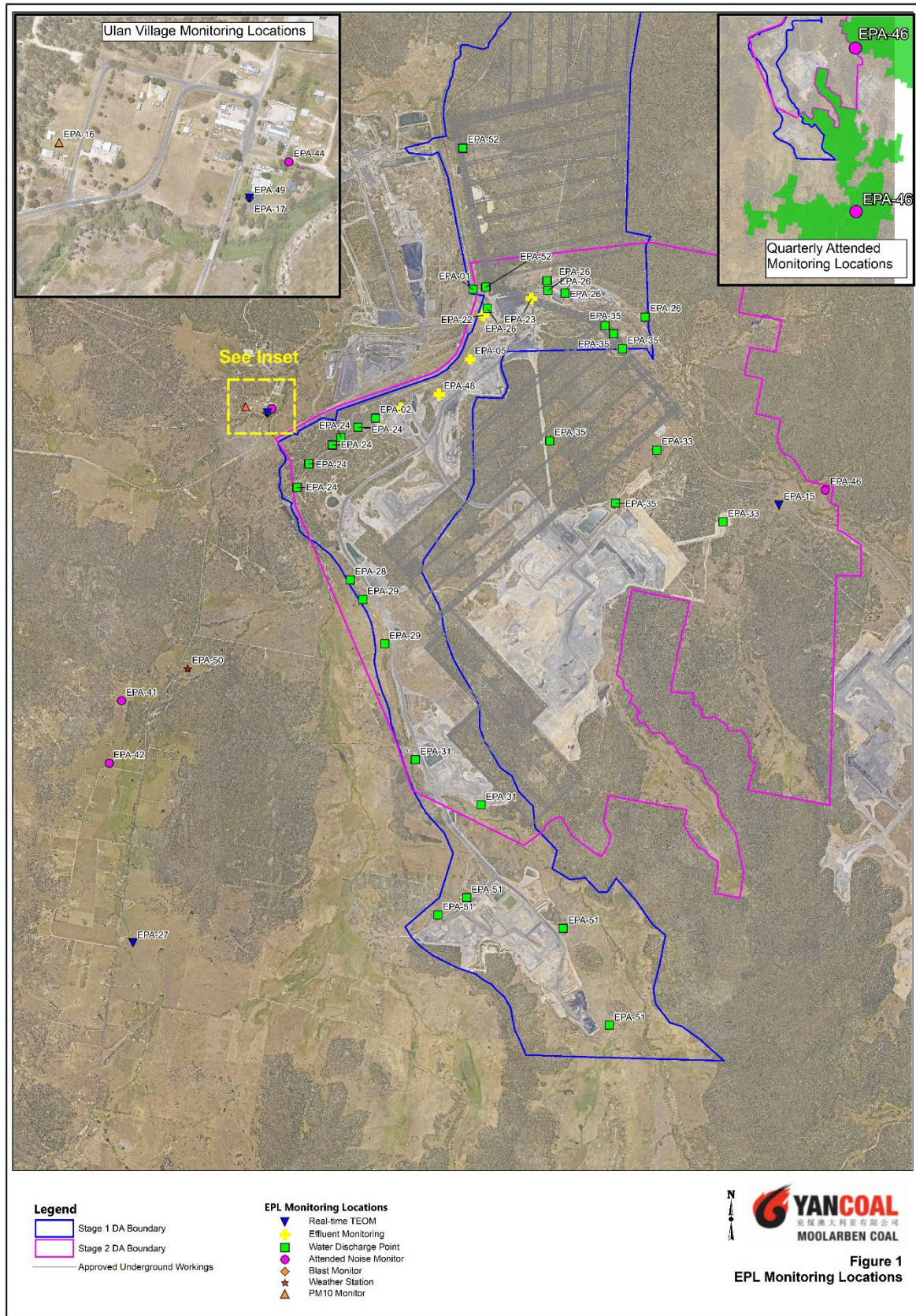


Monthly Environmental Monitoring Report

For the Month Ending 31 August 2024

Name of Operation	Moolarben Coal Complex
Name of License Holder	Moolarben Coal Operations Pty Ltd
4Premises	Moolarben Coal Mine 12 Ulan-Wollar Rd, Ulan NSW 2850
Environmental Protection Licence Number	12932
EPL Link	https://apps.epa.nsw.gov.au/prpoeoapp/ViewPOEOLicence.aspx?DOCID=270376&SYSUID=1&LICID=12932
Premises	Moolarben Coal Mine
Reporting Period	01 August 2024 to 31 August 2024
Date last sampled data obtained	25 September 2024
Publication Date	9 October 2024
Version	1
Author	M.Yeatman
Approver	I.Flood

EPL 12932 MCO Environmental Monitoring Network



Concentration Monitoring Summary

Air Quality Monitoring

EPL ID	Location	Pollutant	Unit of Measure	EPL Monitoring Frequency	No. of Samples collected and analysed annually	12 Month Rolling Average			Annual concentration limit	Exceedance (Yes/No)
						Min Value	Mean Value	Max Value		
16	PM01	PM10	µg/m ³	Every 6 days	40	12.5	12.6	12.7	25	No
N/A	PM02	PM10	µg/m ³	N/A	40	12.4	12.5	12.5	25	No
15	TEOM 6	PM10	µg/m ³	Continuous	95.5%	19.8	19.9	20.1	N/A	N/A
17	TEOM 1	PM10	µg/m ³	Continuous	98.4%	17.1	17.1	17.2	25	No
27	TEOM 7	PM10	µg/m ³	Continuous	95.9%	10.1	10.2	10.3	25	No
27	TEOM 7	PM2.5	µg/m ³	Continuous	95.9%	4.3	4.4	4.5	8	No
N/A	TEOM 4	PM10	µg/m ³	N/A	92.6%	14.4	14.4	14.5	25	No

EPL ID	Location	Pollutant	Unit of Measure	EPL Monitoring Frequency	No. of Samples collected and analysed	Min Value	Mean Value	Max Value	24 hr concentration limit	Exceedance (Yes/No)
16	PM01	PM10	µg/m ³	Every 6 days	5	6.4	9.1	12.4	50	No
N/A	PM02	PM10	µg/m ³	N/A	5	5.4	8.6	11.1	50	No
15	TEOM 6	PM10	µg/m ³	Continuous (24 Hr Average)	100%	6.4	17.2	31.2	N/A	N/A
17	TEOM 1	PM10	µg/m ³	Continuous (24 Hr Average)	100%	4.6	14.3	19.9	50	No
27	TEOM 7	PM10	µg/m ³	Continuous (24 Hr Average)	90.3%	0.9	6.4	11.9	50	No
27	TEOM 7	PM2.5	µg/m ³	Continuous (24 Hr Average)	90.3%	0.0	2.5	6.0	25	No
N/A	TEOM 4	PM10	µg/m ³	N/A (24 Hr Average)	93.5%	3.2	10.2	15.4	50	No

Surface Water Quality Monitoring

EPL ID	Location	Pollutant	Unit of Measure	No. of Samples collected and analysed	Date Sampled	Results
N/A	SW01	Conductivity	µS/cm	1	06/08/2024	631
		pH	pH	1	06/08/2024	8.0
		Total Suspended Solids	mg/L	1	06/08/2024	<5
N/A	SW02	Conductivity	µS/cm	1	06/08/2024	626
		pH	pH	1	06/08/2024	8.2
		Total Suspended Solids	mg/L	1	06/08/2024	<5
N/A	SW04	Conductivity	µS/cm	1	06/08/2024	367
		pH	pH	1	06/08/2024	6.9
		Total Suspended Solids	mg/L	1	06/08/2024	6
N/A	SW05	Conductivity	µS/cm	1	06/08/2024	648
		pH	pH	1	06/08/2024	7.5
		Total Suspended Solids	mg/L	1	06/08/2024	31
N/A	SW07	Conductivity	µS/cm	0	06/08/2024	*
		pH	pH	0	06/08/2024	*
		Total Suspended Solids	mg/L	0	06/08/2024	*
N/A	SW08	Conductivity	µS/cm	1	06/08/2024	2440
		pH	pH	1	06/08/2024	6.5
		Total Suspended Solids	mg/L	1	06/08/2024	<5
N/A	SW09	Conductivity	µS/cm	1	06/08/2024	2370
		pH	pH	1	06/08/2024	6.8
		Total Suspended Solids	mg/L	1	06/08/2024	26
N/A	SW12	Conductivity	µS/cm	1	06/08/2024	518
		pH	pH	1	06/08/2024	7.5
		Total Suspended Solids	mg/L	1	06/08/2024	22
N/A	SW15	Conductivity	µS/cm	0	06/08/2024	*
		pH	pH	0	06/08/2024	*
		Total Suspended Solids	mg/L	0	06/08/2024	*
N/A	SW16	Conductivity	µS/cm	1	06/08/2024	330
		pH	pH	1	06/08/2024	7.0
		Total Suspended Solids	mg/L	1	06/08/2024	<5

MONTHLY ENVIRONMENTAL MONITORING REPORT

For the Month Ending 31 August 2024

EPL ID	Location	Pollutant	Unit of Measure	No. of Samples collected and analysed	Date Sampled	Results
N/A	SW17	Conductivity	µS/cm	0	06/08/2024	*
		pH	pH	0	06/08/2024	*
		Total Suspended Solids	mg/L	0	06/08/2024	*
N/A	SW18	Conductivity	µS/cm	0	06/08/2024	*
		pH	pH	0	06/08/2024	*
		Total Suspended Solids	mg/L	0	06/08/2024	*
N/A	SW22	Conductivity	µS/cm	1	06/08/2024	628
		pH	pH	1	06/08/2024	8.3
		Total Suspended Solids	mg/L	1	06/08/2024	<5
N/A	SW23	Conductivity	µS/cm	0	06/08/2024	*
		pH	pH	0	06/08/2024	*
		Total Suspended Solids	mg/L	0	06/08/2024	*
N/A	SW24	Conductivity	µS/cm	0	06/08/2024	*
		pH	pH	0	06/08/2024	*
		Total Suspended Solids	mg/L	0	06/08/2024	*

* No flow

MONTHLY ENVIRONMENTAL MONITORING REPORT

For the Month Ending 31 August 2024

Blasting

	Location	Pollutant	Unit of Measure	Frequency	No. of Blasts during the reporting period	Results			Limits dBL	Exceedance (Yes/No)
						Min Value	Mean Value	Max Value		
49	BM1 Ulan School	Blast Overpressure	dBL	Every Blast	17	84.3	93.8	112.6	115 (95% of Blasts) 120 (100% of Blasts)	No
		Ground Vibration	mm/s	Every Blast		0.0	0.2	0.5	5mm/s (95% of Blasts) 10mm/s (100% of Blasts)	No
N/A	BM5 Ridge Rd	Blast Overpressure	dBL	Every Blast	17	81.4	94.4	107.7	115 (95% of Blasts) 120 (100% of Blasts)	No
		Ground Vibration	mm/s	Every Blast		0.1	0.2	0.8	5mm/s (95% of Blasts) 10mm/s (100% of Blasts)	No
N/A	BM8 Moolarben Rd	Blast Overpressure	dBL	Every Blast	17	81.4	95.1	108.7	115 (95% of Blasts) 120 (100% of Blasts)	No
		Ground Vibration	mm/s	Every Blast		0.0	0.1	0.4	5mm/s (95% of Blasts) 10mm/s (100% of Blasts)	No

MONTHLY ENVIRONMENTAL MONITORING REPORT

For the Month Ending 31 August 2024

Noise

EPL ID	Location	Site ID	Monitoring Type	Frequency	Measured Level ^{1,2,3} LAeq dB (15min)	Measured Level ^{1,2,3} LA1,1dB (1min)	Noise Criteria ⁴	Monitoring Completed during the period	Exceedance (Yes/No)
44	Ulan Public School	NA1	Compliance - Attended	Monthly	IA	IA	Daytime (07:00 – 18:00) LAeq, 15minute: 35 dB	Yes	No
N/A	Cope Road (Receiver 258)	NA11	Management - Attended	Quarterly	IA	IA	-	Yes	No
N/A	Lagoons Road	NA2	Validation - Attended	Annually	-	-	-	-	-
42	Winchester Crescent	NA12	Compliance/Validation - Attended	Monthly	IA	IA	Night time (22:00 – 07:00) LAeq,15minute: 35 dB LA1,1minute: 45 dB	Yes	No
N/A	Upper Ridge Road (Receiver 176)	NA3	Validation - Attended	Annually	-	-	-	-	-
41	Lower Ridge Road	NA6	Compliance -Attended	Monthly	25	28	Night time (22:00 – 07:00) LAeq,15minute: 37 dB LA1, 1minute: 45 dB	Yes	No
N/A	Moolarben Road (Receiver 28)	NA10	Validation - Attended	Annually	-	-	-	-	-
46	Goulburn River National Park	GRNP	Compliance -Attended	Annually	-	-	All periods LAeq, 15minute: 50 dB	-	-
46	Munghorn Gap Nature Reserve	MGNR	Compliance -Attended	Annually	-	-	All periods LAeq, 15minute: 50 dB	-	-

1. NA indicates meteorological conditions during the measurement did not correspond with any modelled meteorological conditions and were not applicable for comparison.
2. IA is Inaudible. When site only noise is noted as IA, there was no noise from the source of interest audible at the monitoring location.
3. Site-only noise levels attributed to MCO, including modifying factors where applicable.
4. As detailed in the EPL, noise emission limits apply under all meteorological conditions except:
 - Wind speeds greater than 3 m/s at 10 metres above ground level; or
 - Stability class F temperature inversion conditions, and wind speeds greater than 2 m/s at 10 metres above ground level; or
 - Stability class G temperature inversions.
5. NA in last column means atmospheric conditions outside those specified in EPL, therefore criterion was not applicable.

MONTHLY ENVIRONMENTAL MONITORING REPORT

For the Month Ending 31 August 2024

Effluent Discharge Points

EPL ID	Pollutant	Unit of Measure	No. of samples required by Licence	No. of Samples collected and analysed	Date Sampled	Result
5	BOD	mg/L	Quarterly	1	08/08/2024	34
	Nitrogen (total)	mg/L	Quarterly	1	08/08/2024	69.9
	Oil and Grease	mg/L	Quarterly	1	08/08/2024	12
	pH	pH	Quarterly	1	08/08/2024	7.8
	Phosphorus (total)	mg/L	Quarterly	1	08/08/2024	6.5
	Total Suspended Solids	mg/L	Quarterly	1	08/08/2024	65
22	BOD	mg/L	Quarterly	1	08/08/2024	33
	Nitrogen (total)	mg/L	Quarterly	1	08/08/2024	146
	Oil and Grease	mg/L	Quarterly	1	08/08/2024	7
	pH	pH	Quarterly	1	08/08/2024	7.3
	Phosphorus (total)	mg/L	Quarterly	1	08/08/2024	29.5
	Total Suspended Solids	mg/L	Quarterly	1	08/08/2024	32
23	BOD	mg/L	Quarterly	1	08/08/2024	32
	Nitrogen (total)	mg/L	Quarterly	1	08/08/2024	6.8
	Oil and Grease	mg/L	Quarterly	1	08/08/2024	7
	pH	pH	Quarterly	1	08/08/2024	7.2
	Phosphorus (total)	mg/L	Quarterly	1	08/08/2024	0.8
	Total Suspended Solids	mg/L	Quarterly	1	08/08/2024	36
48	BOD	mg/L	Quarterly	1	08/08/2024	44
	Nitrogen (total)	mg/L	Quarterly	1	08/08/2024	9.8
	Oil and Grease	mg/L	Quarterly	1	08/08/2024	8
	pH	pH	Quarterly	1	08/08/2024	7.8
	Phosphorus (total)	mg/L	Quarterly	1	08/08/2024	1.0
	Total Suspended Solids	mg/L	Quarterly	1	08/08/2024	18

MONTHLY ENVIRONMENTAL MONITORING REPORT

For the Month Ending 31 August 2024

Discharge Points

EPL ID	Pollutant	Unit of Measure	No. of samples required by Licence	No. of Samples collected and analysed	Min Value	Mean Value	Max Value	100%ile concentration limit	Exceedance (Yes/No)
1	Conductivity	µS/cm	Continuous during discharge	Continuous during discharge	146	168	186	619	No
	Oil and Grease	mg/L	Weekly during discharge	4	<5	<5	<5	10	No
	pH	pH	Continuous during discharge	Continuous during discharge	7.4	7.5	7.5	6.5-8.5	No
	Total Suspended Solids	mg/L	Weekly during discharge	4	<1	<1	<1	50	No
	Turbidity	NTU	Continuous during discharge	Continuous during discharge	0	0	9	25	No
	Discharge Volume	Megalitres per day	Continuous during discharge	Continuous during discharge	0	7.1	12.1	20 ¹	No
2	Conductivity	µS/cm	Continuous during discharge	No licensed discharges during the period				619	NA
	Oil and Grease	mg/L	Daily during discharge					10	NA
	pH	pH	Continuous during discharge					6.5-8.5	NA
	Total Suspended Solids	mg/L	Daily during discharge					50	NA
	Turbidity	NTU	Continuous during discharge					25	NA
	Discharge Volume	Megalitres per day	Continuous during discharge					NA	NA
24	pH	pH	Daily during discharge	No licensed discharges during the period				6.5-8.5	NA
	Total Suspended Solids	mg/L	Daily during discharge					50	NA
	Turbidity	NTU	Daily during discharge					25	NA
26	pH	pH	Daily during discharge	No licensed discharges during the period				6.5-8.5	NA
	Total Suspended Solids	mg/L	Daily during discharge					50	NA
	Turbidity	NTU	Daily during discharge					25	NA
28	Conductivity	µS/cm	Continuous during discharge	No licensed discharges during the period				619	NA
	Oil and Grease	mg/L	Daily during discharge					10	NA
	pH	pH	Continuous during discharge					6.5-8.5	NA
	Total Suspended Solids	mg/L	Daily during discharge					50	NA
	Turbidity	NTU	Continuous during discharge					25	NA

MONTHLY ENVIRONMENTAL MONITORING REPORT

For the Month Ending 31 August 2024

EPL ID	Pollutant	Unit of Measure	No. of samples required by Licence	No. of Samples collected and analysed	Min Value	Mean Value	Max Value	100%ile concentration limit	Exceedance (Yes/No)
	Discharge Volume	Kilolitres per day	Continuous during discharge					NA	NA
29	pH	pH	Daily during discharge	No licensed discharges during the period				6.5-8.5	NA
	Total Suspended Solids	mg/L	Daily during discharge					50	NA
	Turbidity	NTU	Daily during discharge					25	NA
31	pH	pH	Daily during discharge	No licensed discharges during the period				6.5-8.5	NA
	Total Suspended Solids	mg/L	Daily during discharge					50	NA
	Turbidity	NTU	Daily during discharge					25	NA
35	pH	pH	Daily during discharge	No licensed discharges during the period				6.5-8.5	NA
	Total Suspended Solids	mg/L	Daily during discharge					50	NA
	Turbidity	NTU	Daily during discharge					25	NA
51	pH	pH	Daily during discharge	No licensed discharges during the period				6.5-8.5	NA
	Total Suspended Solids	mg/L	Daily during discharge					50	NA
	Turbidity	NTU	Daily during discharge					25	NA

1. Only applies when mining operations at the premises include that undertaken in the areas "UG4".