

Ashton Coal Operations Pty Ltd
Community Consultative Committee
Presentation – 6 July 2016



Action List

ITEM	RESPONSIBILITY	PROGRESS UPDATE
Provide hard copies of the AEMR to CCC Members	JB	To be completed at this meeting

Ashton Statistics

Ashton Coal Statistics			
	2016 Budget (YTD)	2016 Actual	2015 Actual (1/2 year)
ROM (t)	894,465	890,407	1,383,534
Product Coal (t)	390,266	433,285	624,192
Total Coal Sales (t)	409,500	530,297	654,899
Lost Time Injury (LTIFR)	9.5	15.7	7.6
Total Recordable Injuries (TRIFR)	25.53	20.9	27.8
Total Employees (FTE)	201	198	199
Complaints	0	0	0
Environmental Incidents	0	0	0

Current Operations

- ACOL has recently commenced LW 105. This is a short panel and we plan to move into LW 106A in September.
- Development is continuing in the Upper Lower Liddell seam forming longwall blocks and main headings.
- South East Open Cut – no further movement.



Exploration Activities

No exploration was conducted in EL5860 or EL4918 during the reporting period.



Approvals Update

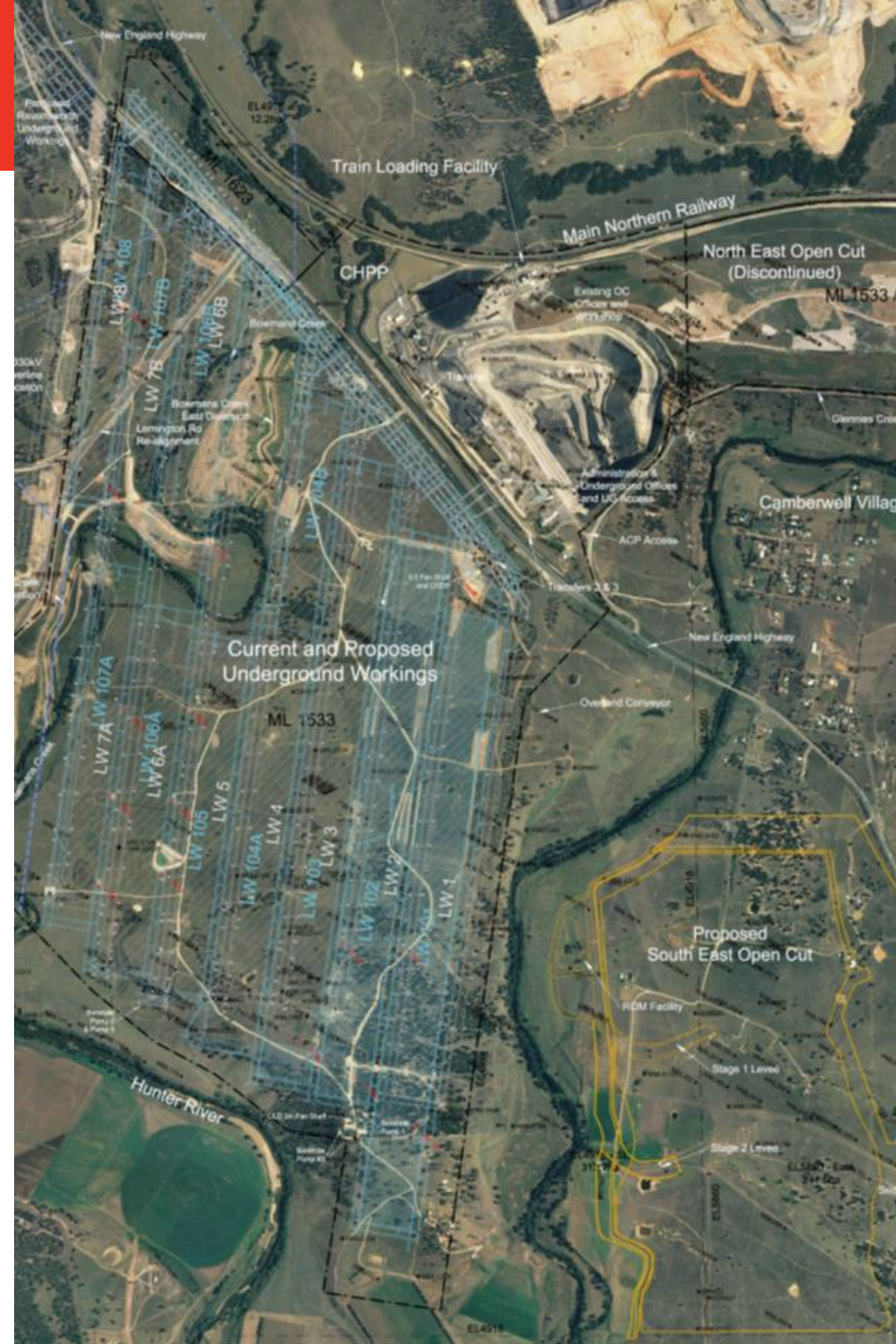
As mining at ACOL progresses additional approvals are required to continue operations.

Recent Approval determinations include:

- DA Mod 5
- Mining Operations Plan amendment
- Ausgrid Asset Management Plan
- Bore licence for the South East Open Cut

Upcoming Approvals

- Currently working on the LW201-204 Extraction Plan which is due for submission in October 2016.



- DA Mod 5 was prepared to allow for the integration of the Underground and SEOC approvals.
- It was lodged in 2009 with the SEOC application and approved on 20 June 2016 by the Planning Assessment Commission (PAC).
- The recent approval updates/modernises the Ashton Coal consent and we are currently reviewing the implications of the new conditions
- The UG operation will remain largely unchanged

Notice of Modification

Section 75W of the *Environmental Planning & Assessment Act 1979*

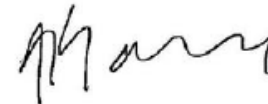
As delegate of the Minister for Planning, the Planning Assessment Commission modifies the development consent referred to in Schedule 1, as set out in Schedule 2.

These conditions are required to:

- prevent, minimise, and/or offset adverse environmental impacts;
- set standards and performance measures for acceptable environmental performance;
- require regular monitoring and reporting; and
- provide for the ongoing environmental management of the development.



Alan Coutts
Member of the Commission



Abigail Goldberg
Member of the Commission



David Johnson
Member of the Commission

Sydney

20 June 2016

SCHEDULE 1

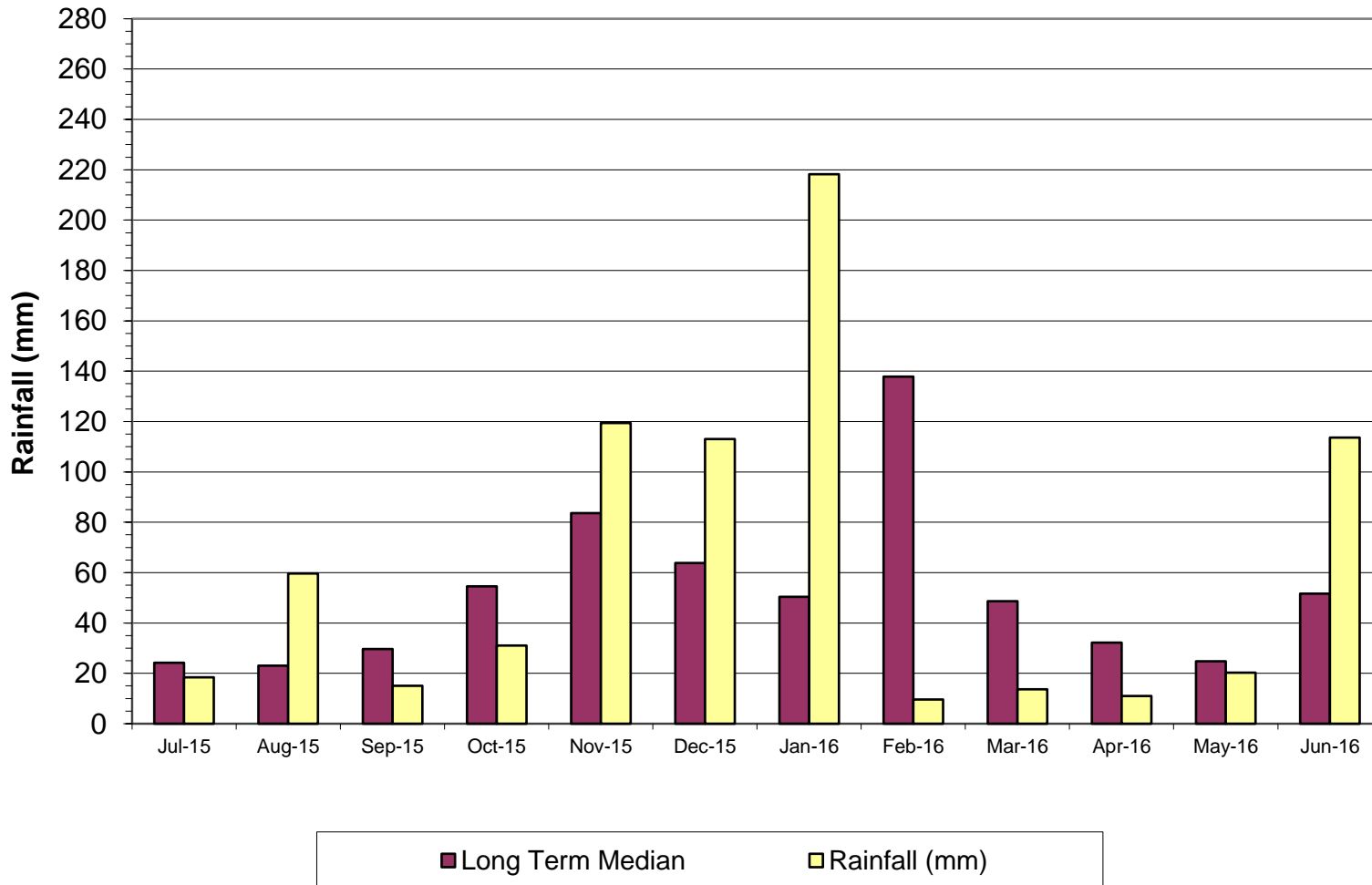
The development consent for the Ashton Coal Project (DA 309-11-2001-i)

Environment Monitoring Data

- The following slides present environmental monitoring data for the reporting period
- Meteorological
 - Rainfall
- Air Quality
 - Depositional Dust Gauges – Total suspended dust
 - PM10 – Tapered Element Oscillating Microbalance (TEOM)
- Surface Water – Glennies Ck, Bowmans Ck and Hunter River
- Groundwater – various aquifers
- Noise

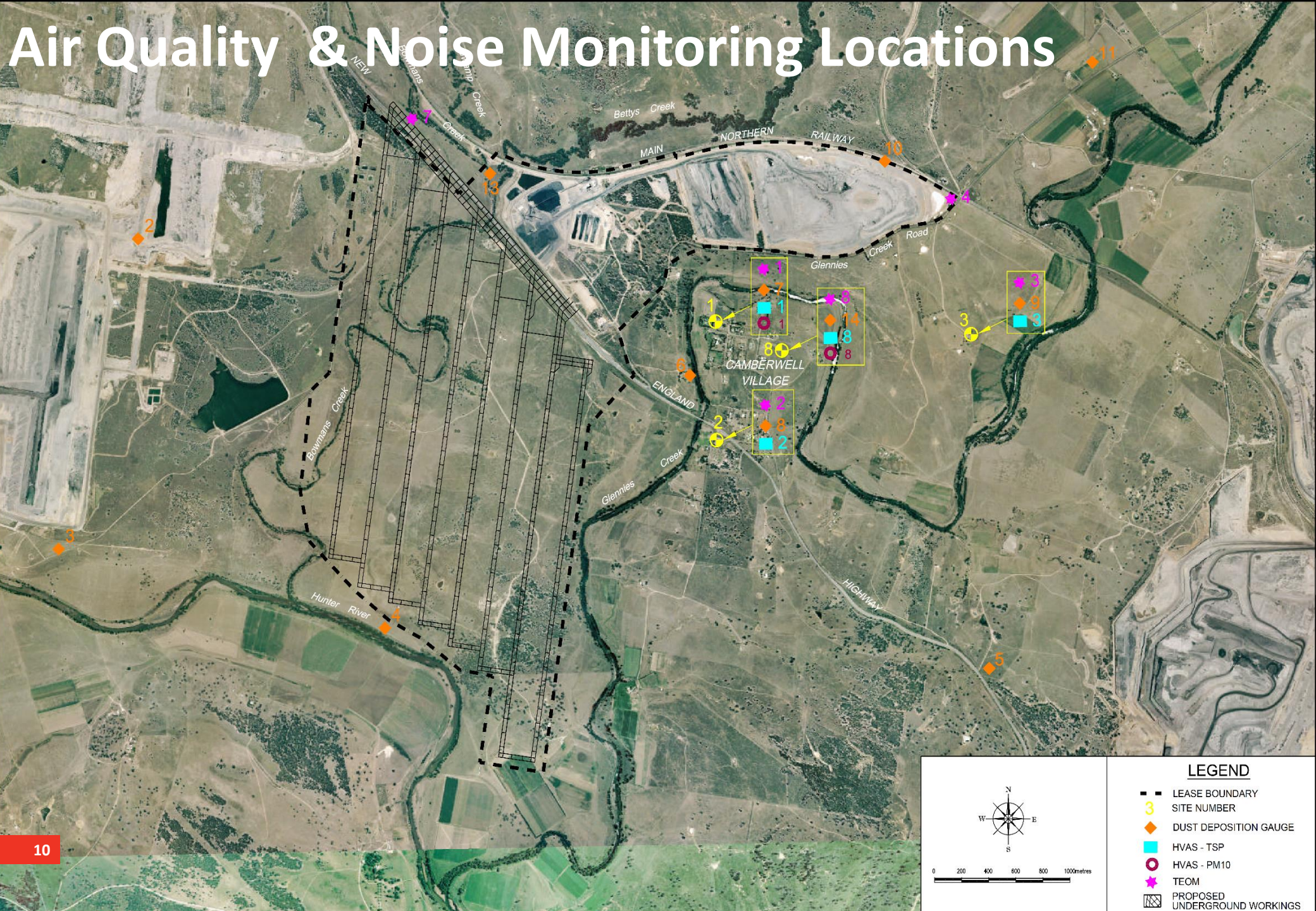
Rainfall

Rainfall at Repeater



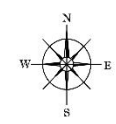
YTD Rainfall:
386mm

Air Quality & Noise Monitoring Locations

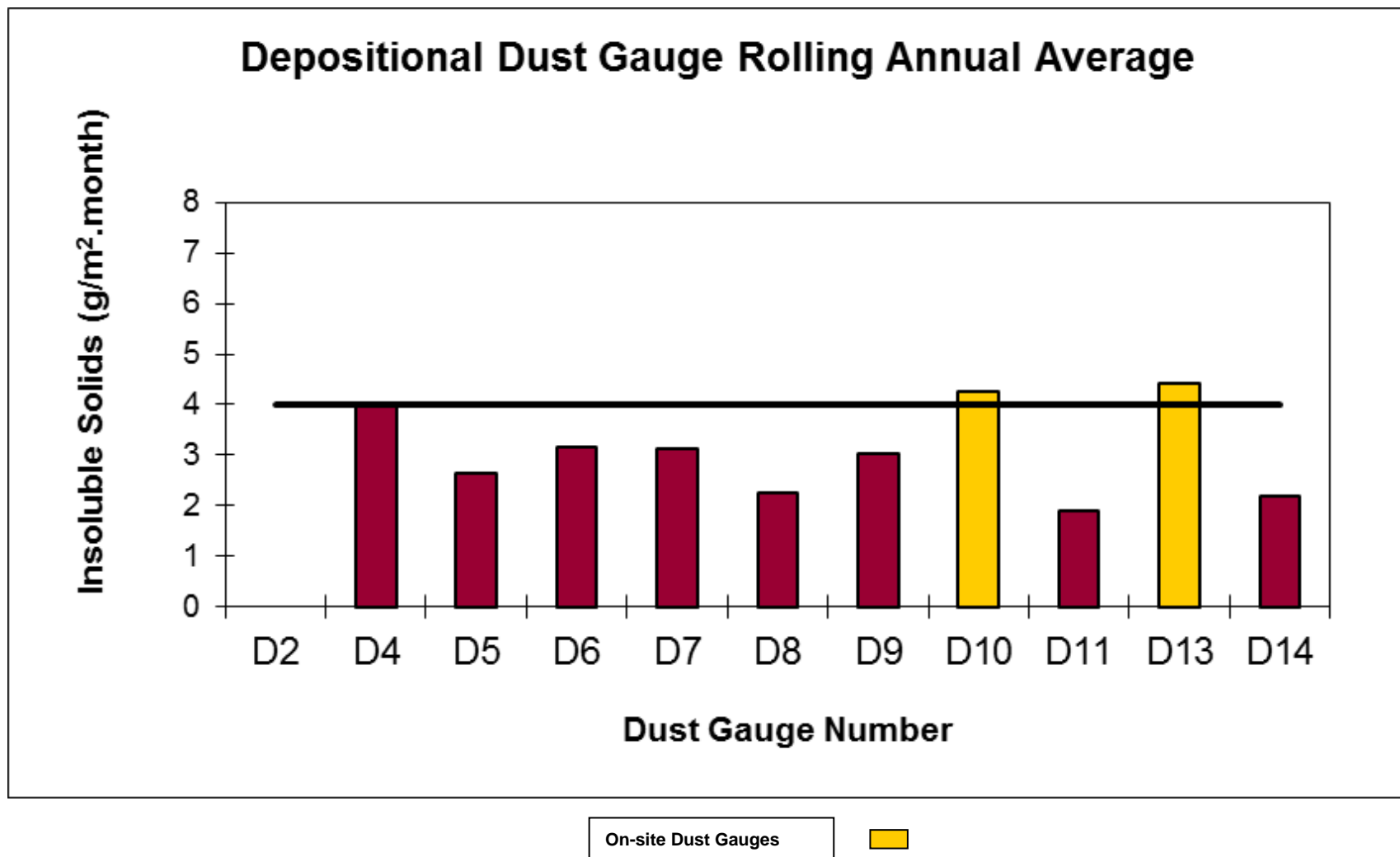


LEGEND

- LEASE BOUNDARY
- 3 SITE NUMBER
- ◆ DUST DEPOSITION GAUGE
- HVAS - TSP
- HVAS - PM10
- ★ TEOM
- ▨ PROPOSED UNDERGROUND WORKINGS

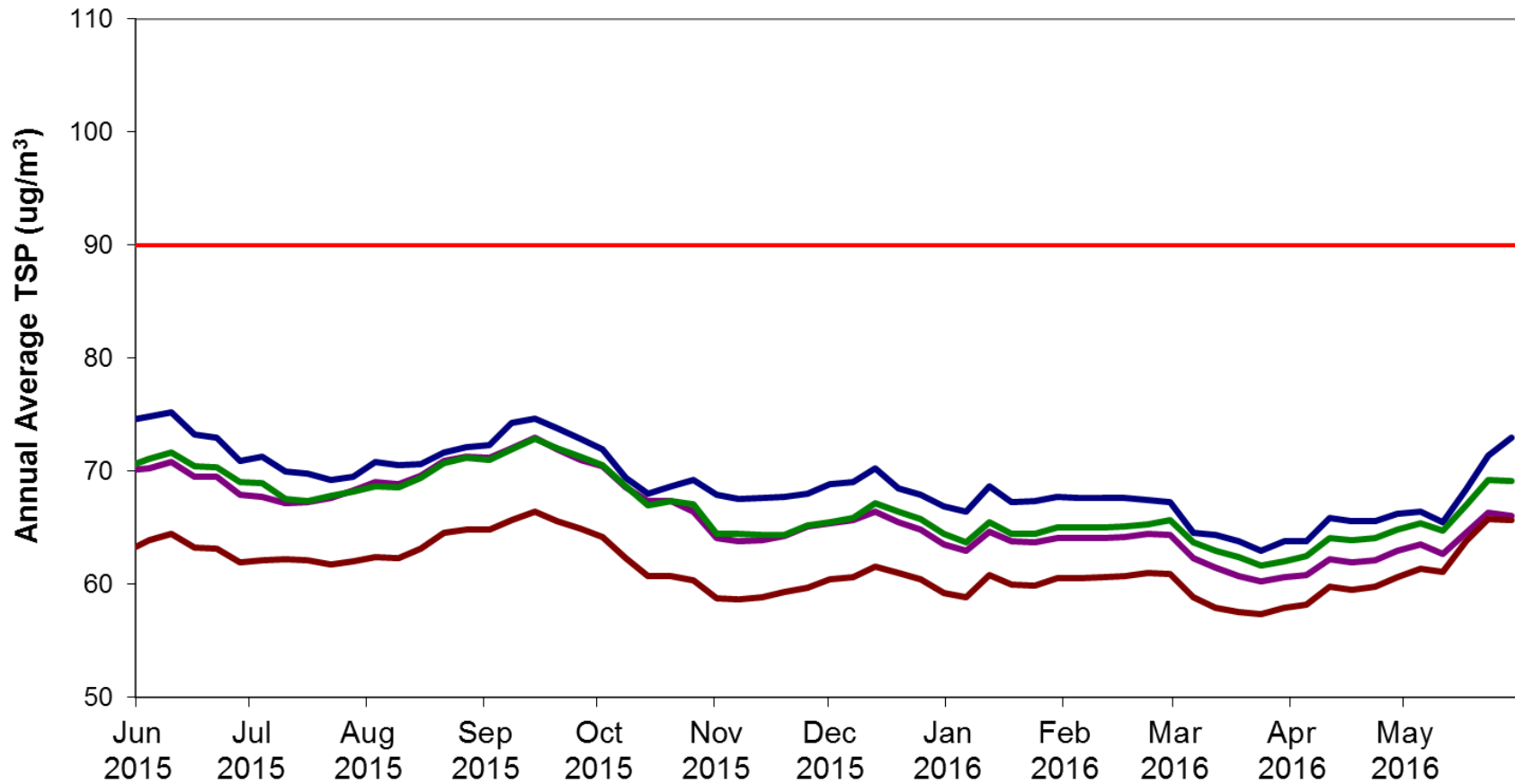


Depositional Dust



Total Suspended Dust

HVAS TSP Rolling Annual Average HVAS TSP All Sites



Site 1 - Rolling Annual Average

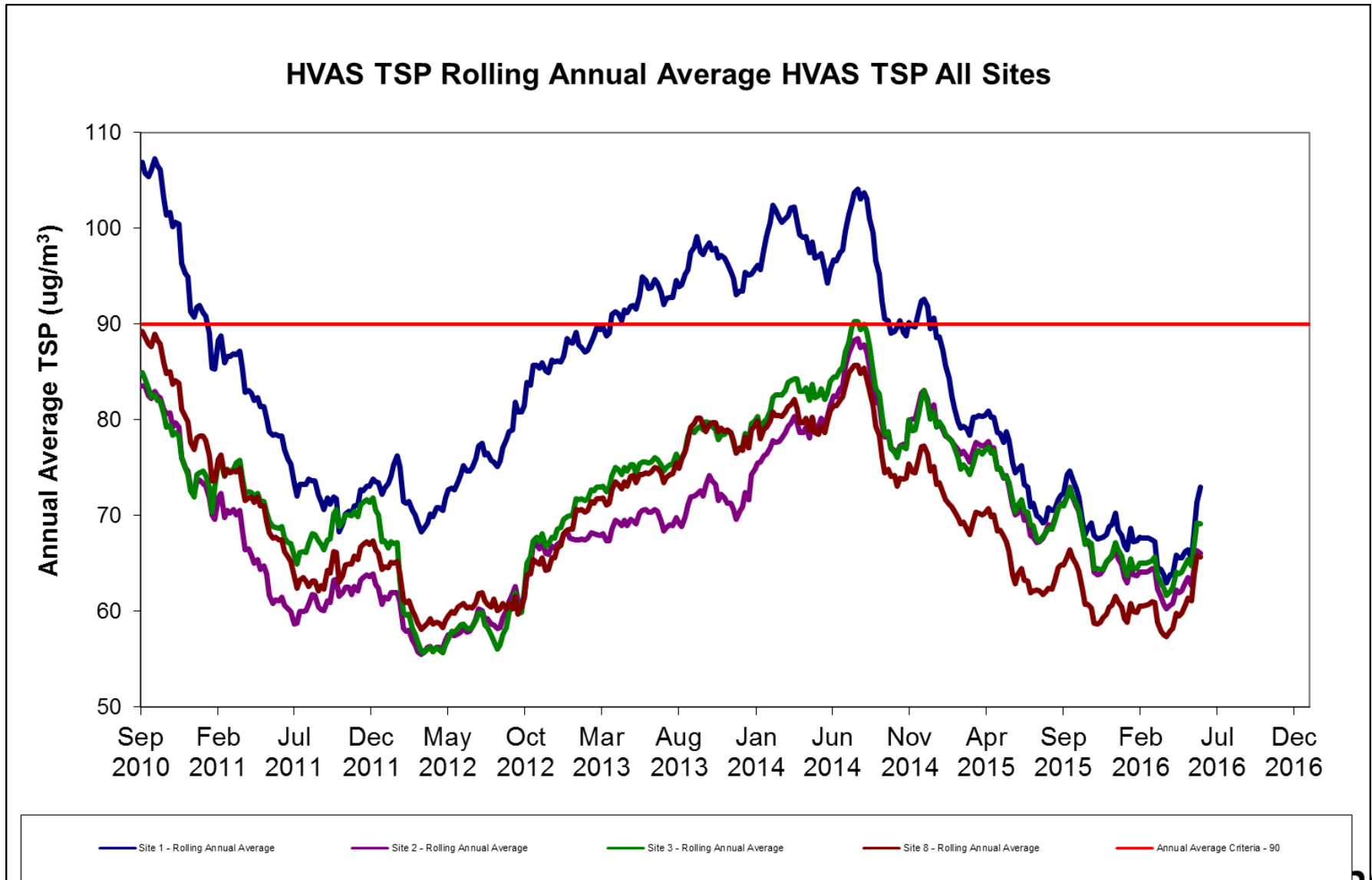
Site 2 - Rolling Annual Average

Site 3 - Rolling Annual Average

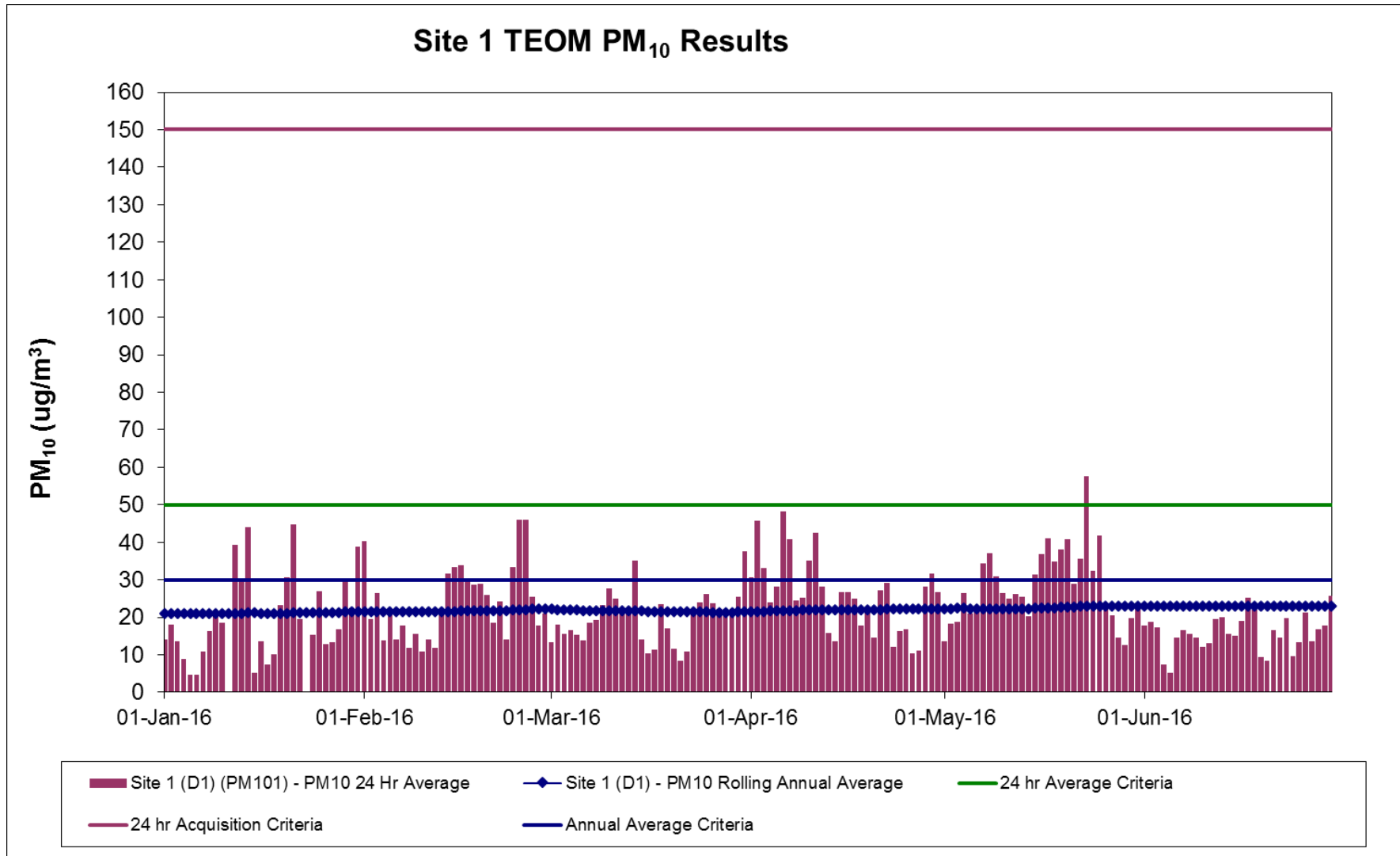
Site 8 - Rolling Annual Average

Annual Average Criteria - 90

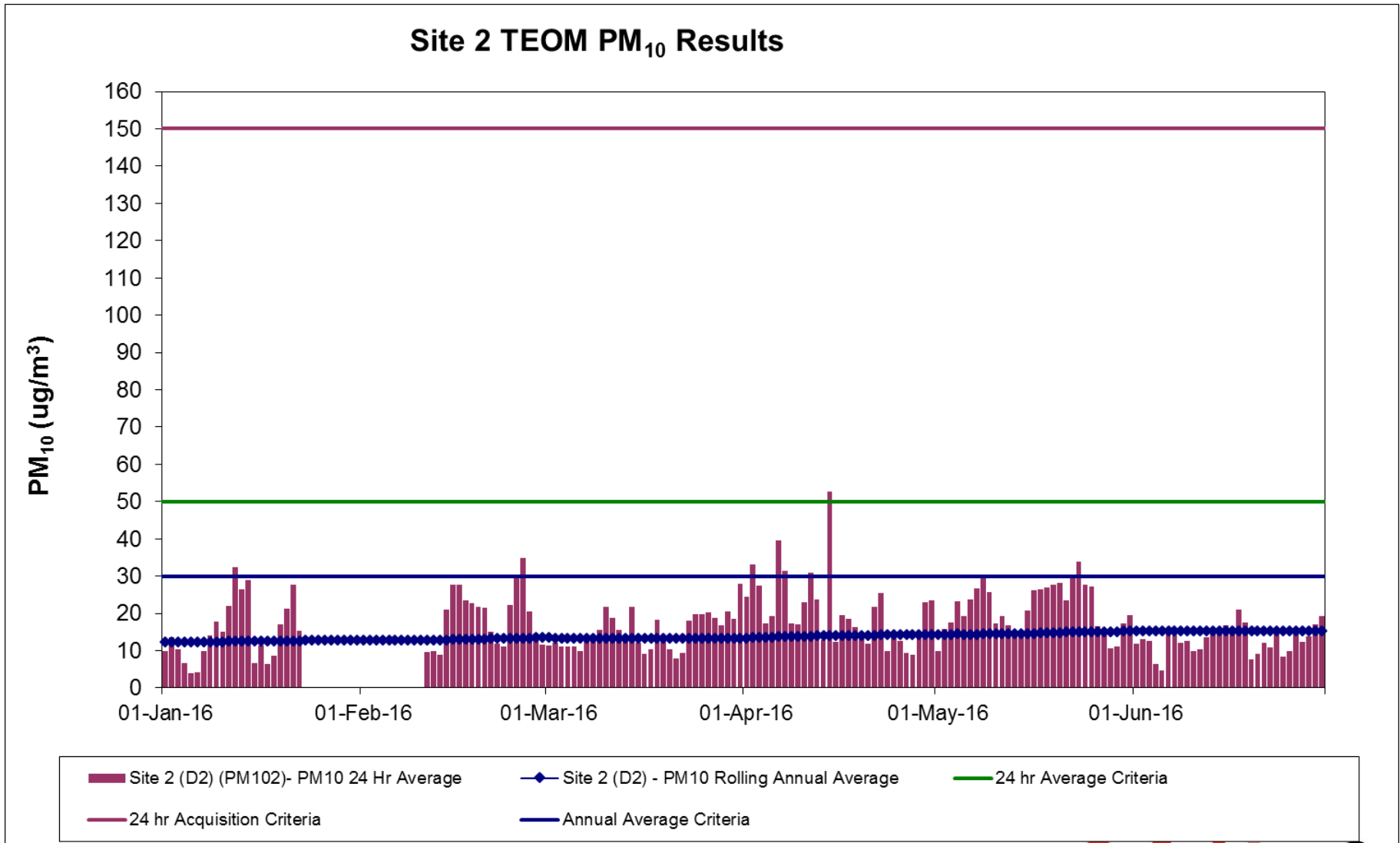
Total Suspended Dust



PM₁₀ Dust – Site 1

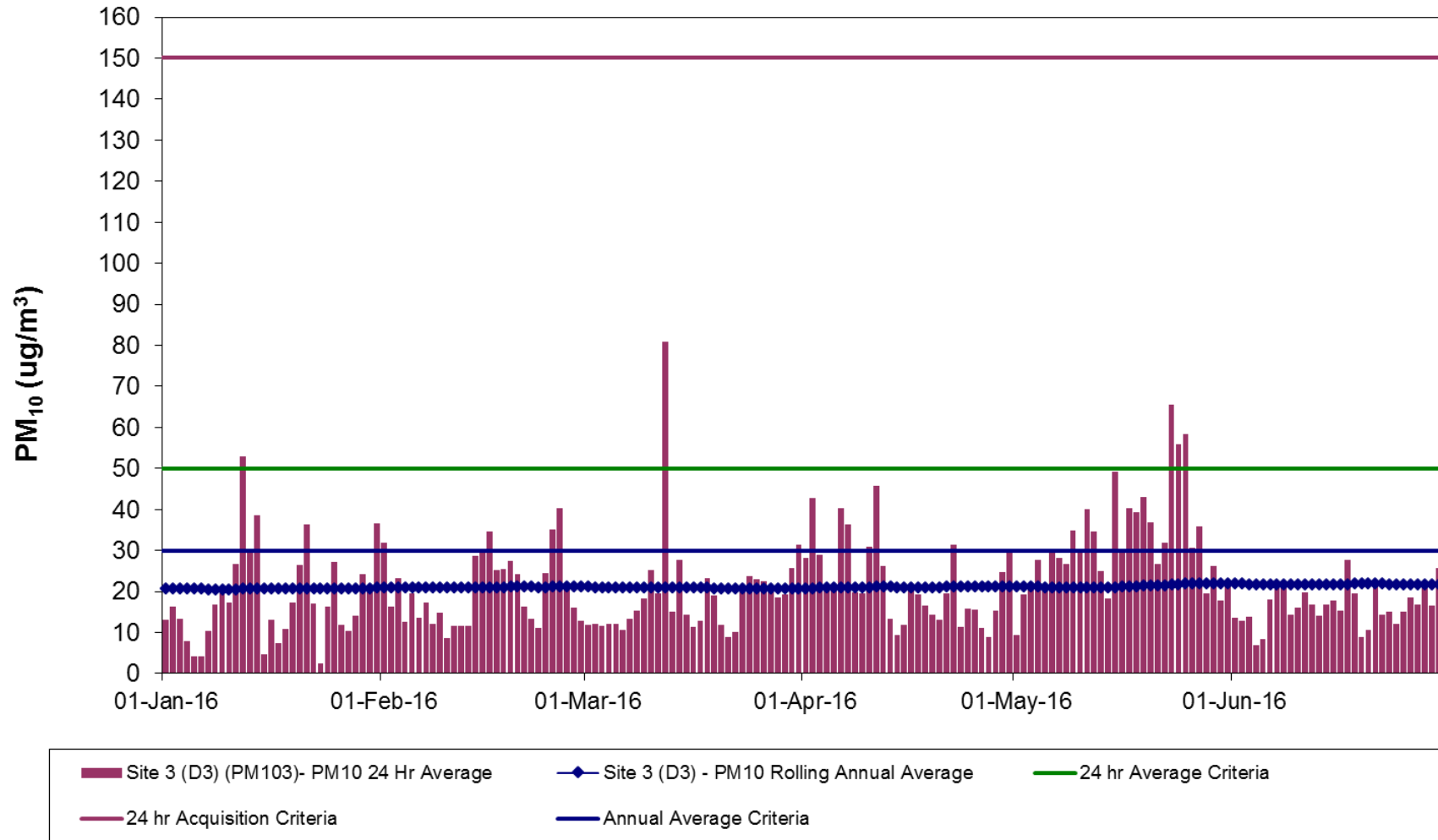


PM₁₀ Dust – Site 2



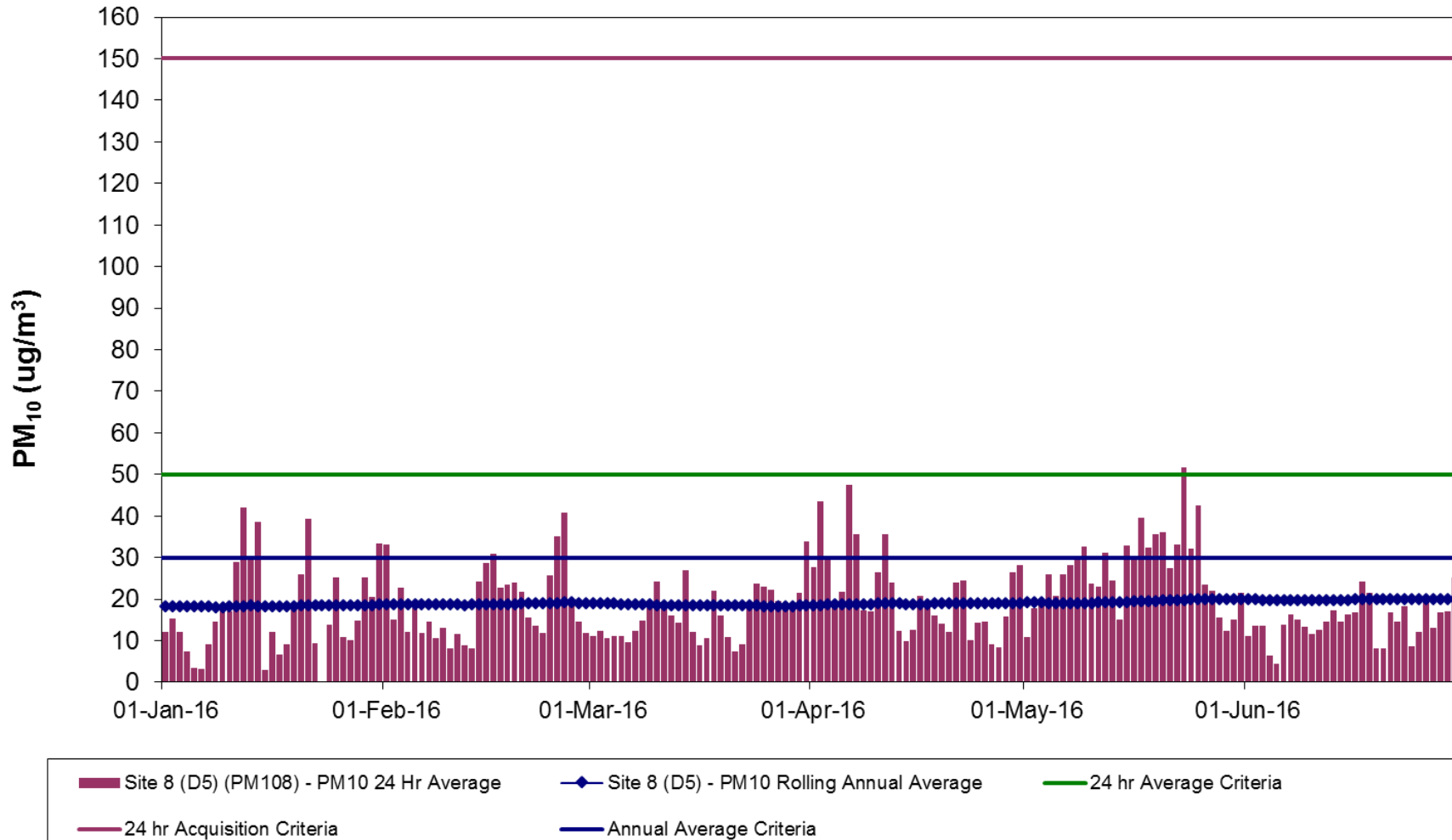
PM₁₀ Dust – Site 3

Site 3 TEOM PM₁₀ Results



PM₁₀ Dust – Site 8

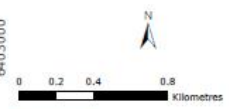
Site 8 TEOM PM₁₀ Results



Surface Water Sampling Locations



- LEGEND**
- Surface Water Monitoring Location
 - Onsite Water Management Monitoring Location
 - Bowmans Creek Monitoring Location
 - ACOL Flow Gauge
 - NSW Office of Water Gauge
 - Upper Liddell Mine Plan
 - Creeks or River
 - ▨ Diversion Footprint



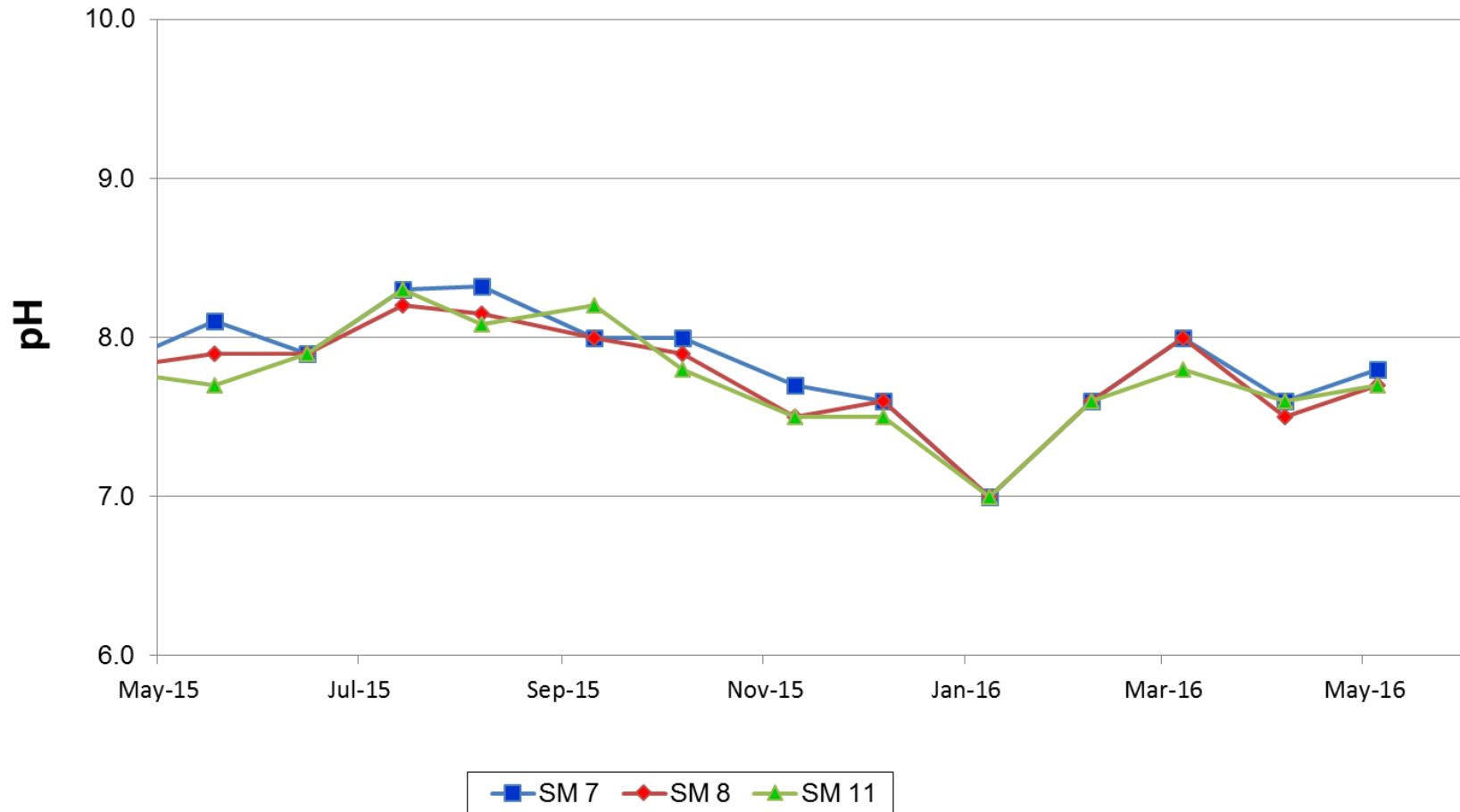
RPS Aquaterra

FIGURE 11
Surface Water Monitoring Network

AUTHOR	HZ	PROJECT NO	SSRE
CHECKED BY	JVDA	REVISION	A
DATE	19/07/2011	DRAWING NO	029e

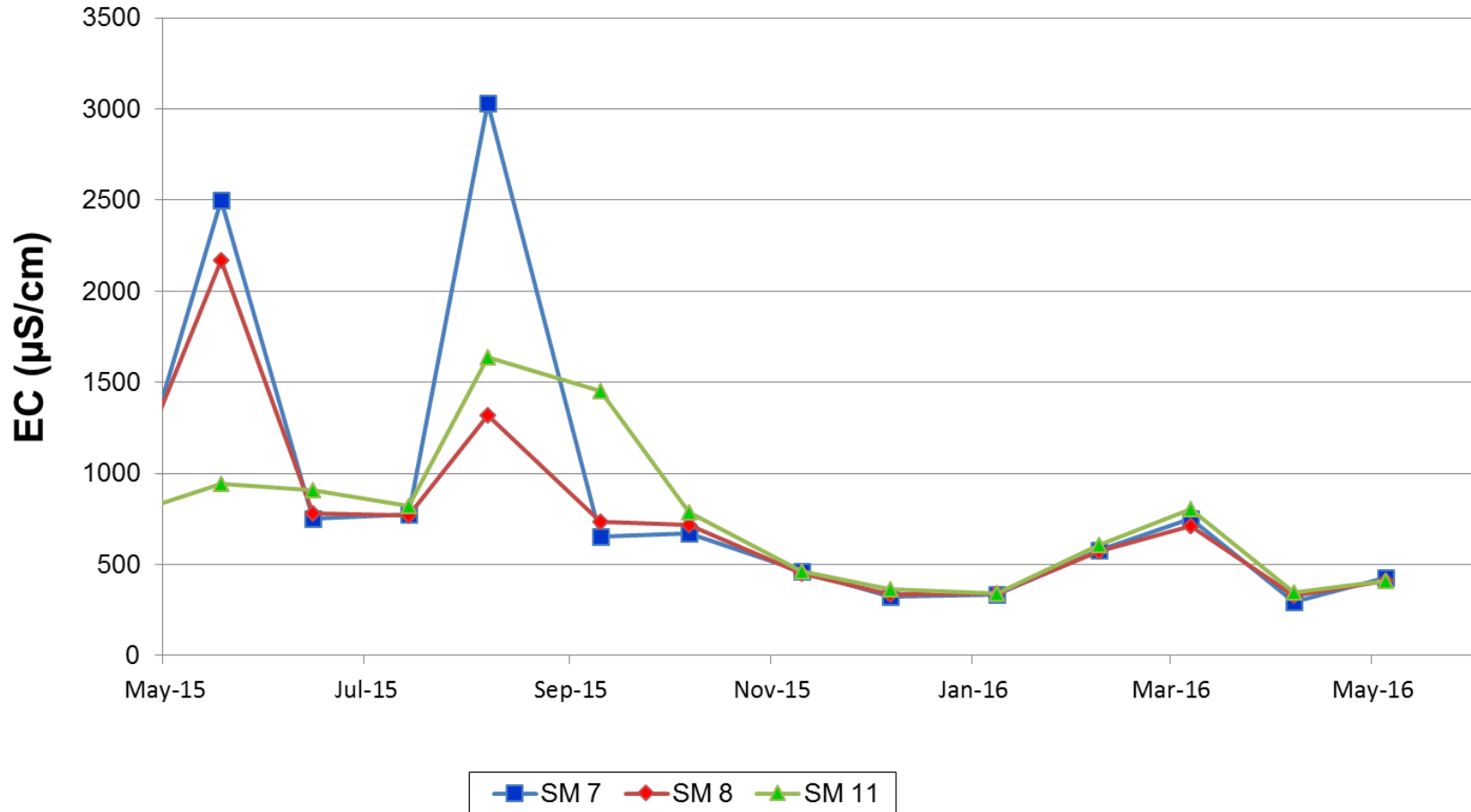
Surface Water Quality – pH

Glennies Creek Monthly pH Levels 2015 - 2016



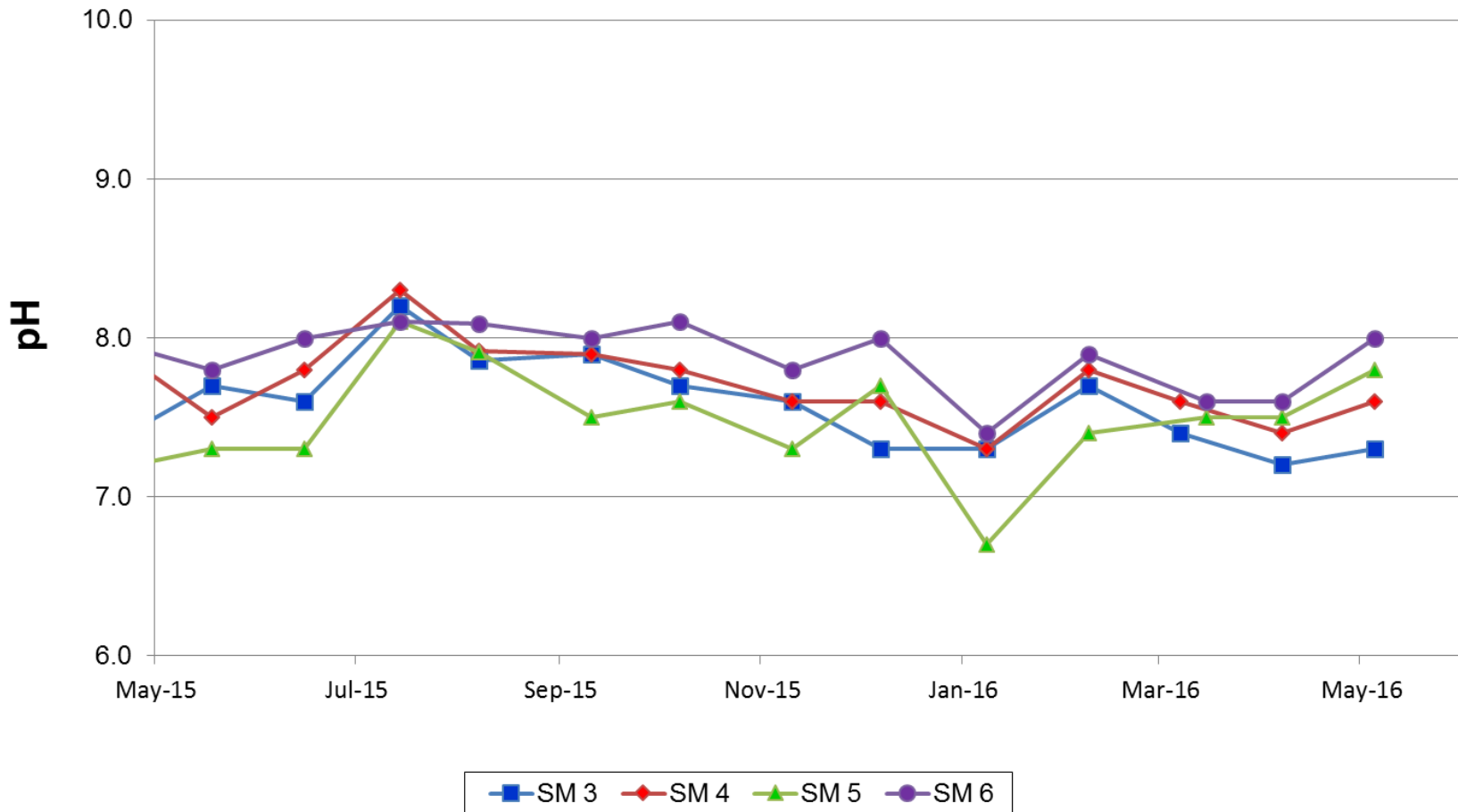
Surface Water Quality – EC

Glennies Creek Monthly Electrical Conductivity Levels 2015 - 2016



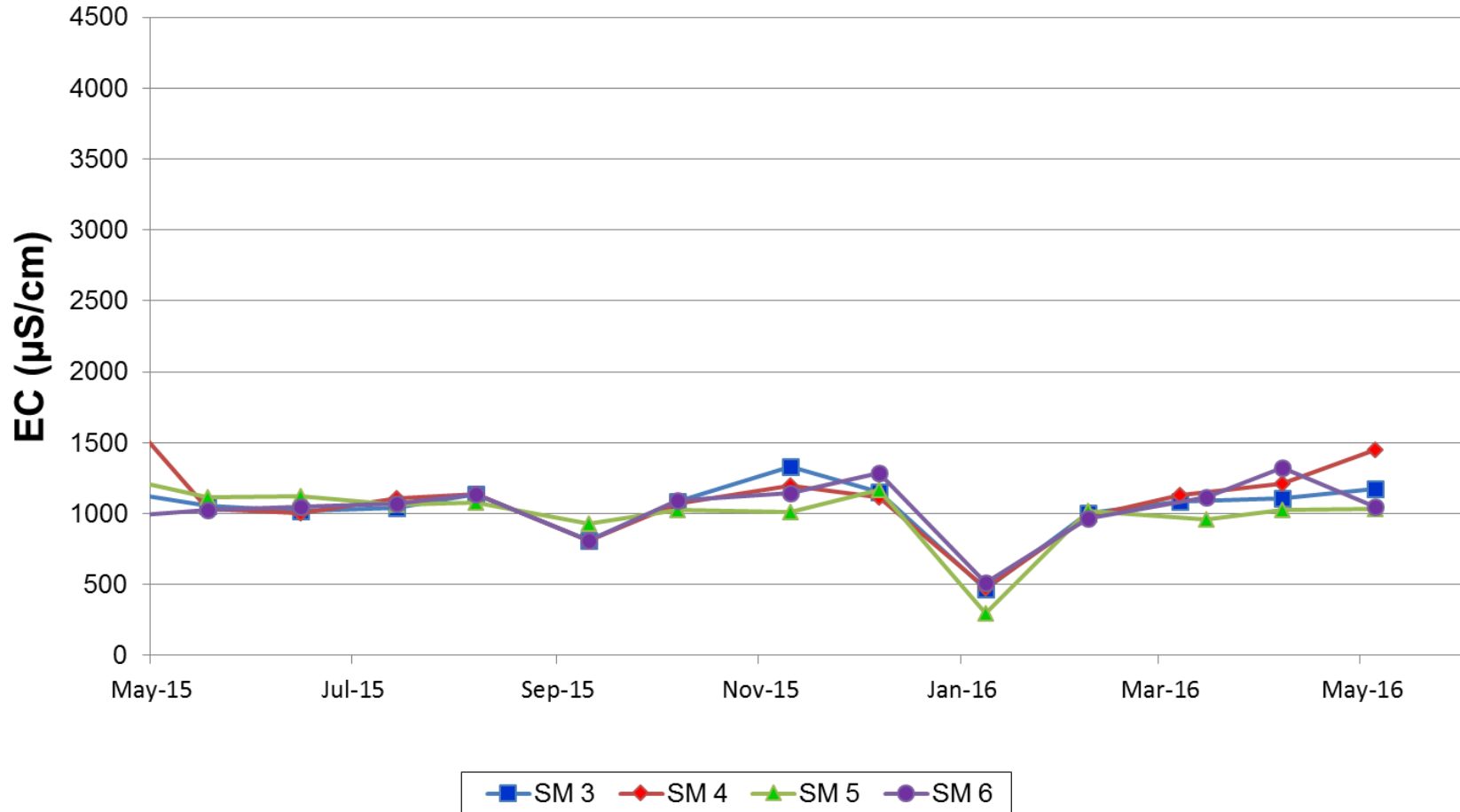
Surface Water Quality – pH

Bowmans Creek Monthly pH Levels 2015 - 2016



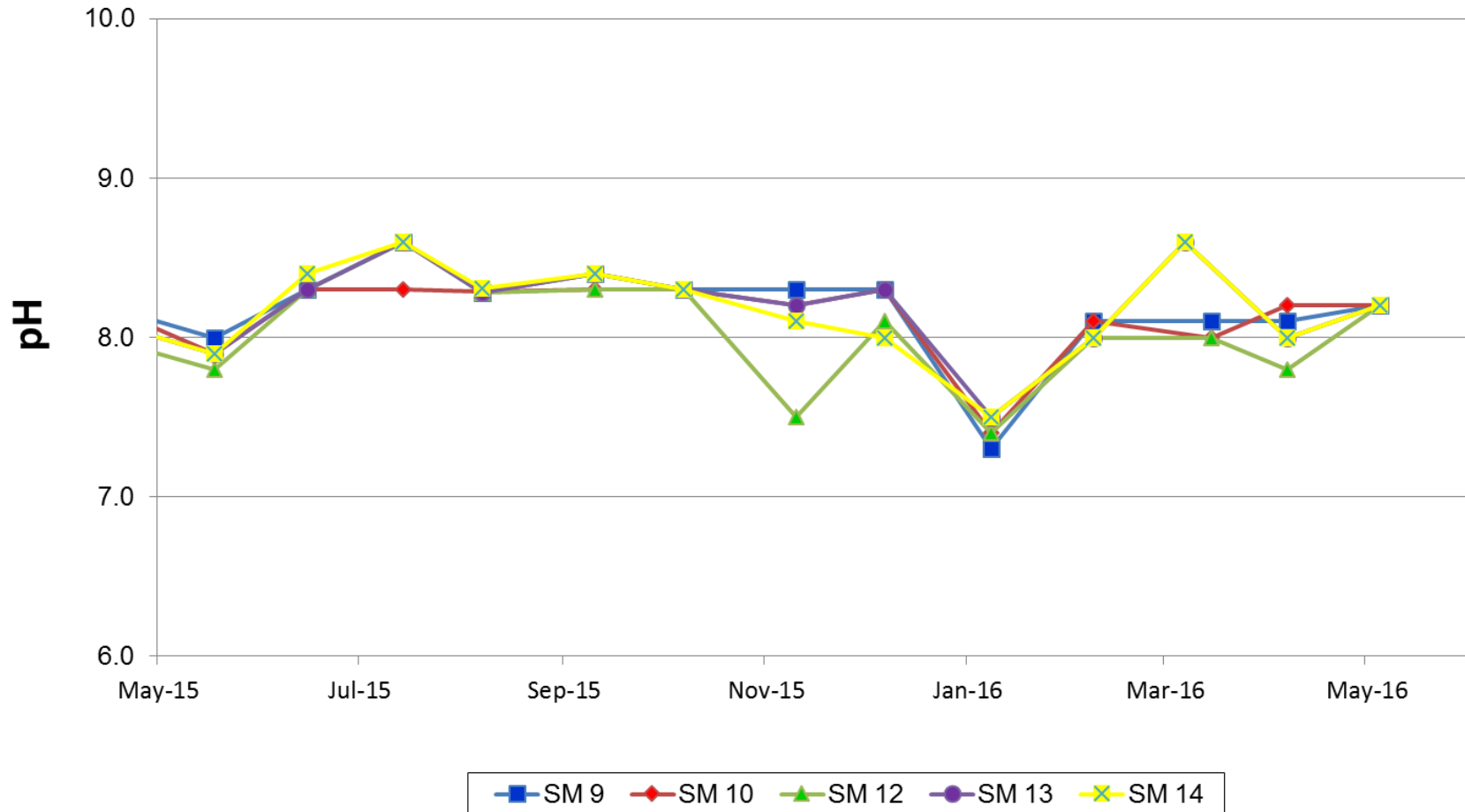
Surface Water Quality – EC

Bowmans Creek Monthly Electrical Conductivity Levels 2015 - 2016



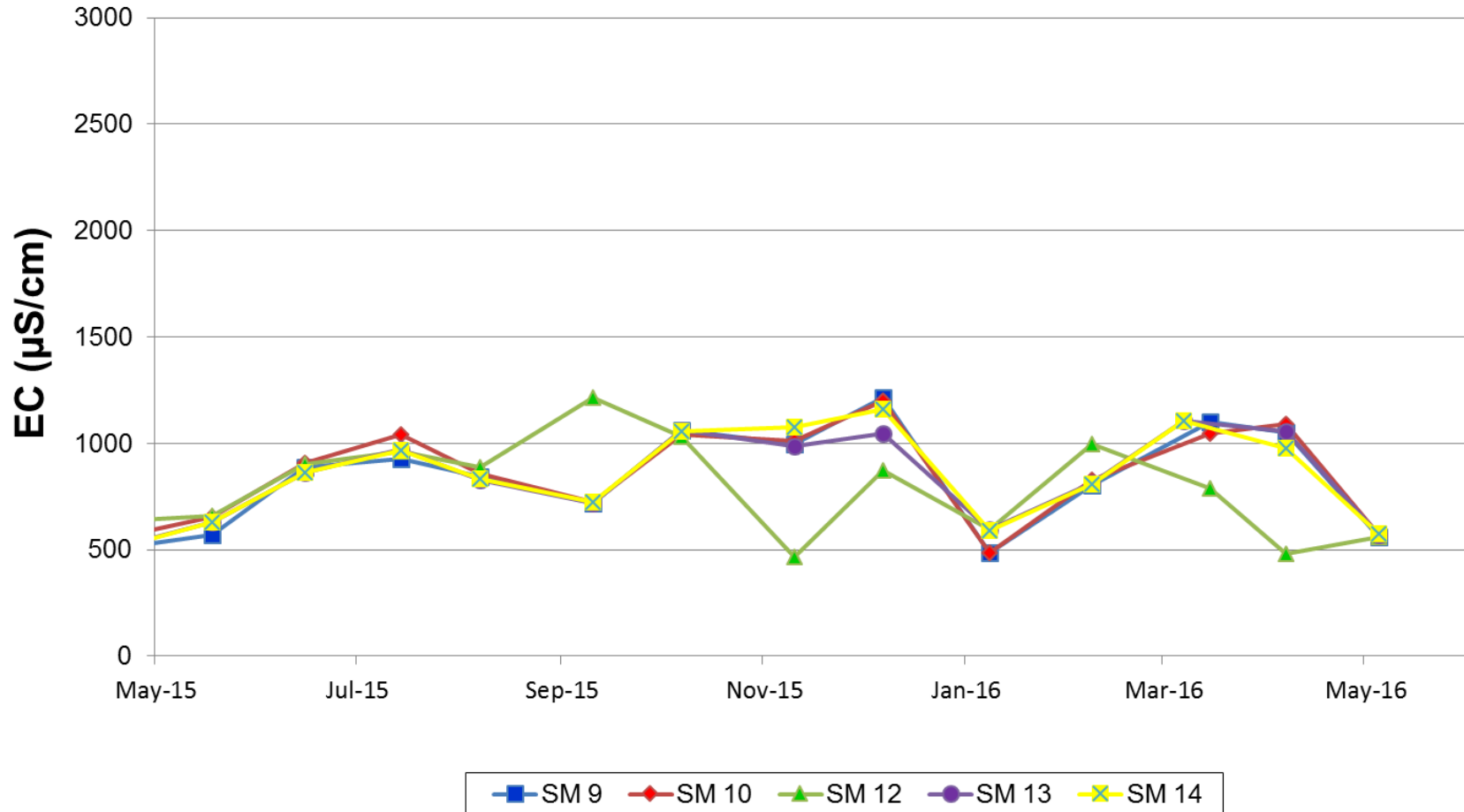
Surface Water Quality – pH

Hunter River Monthly pH Levels 2015- 2016

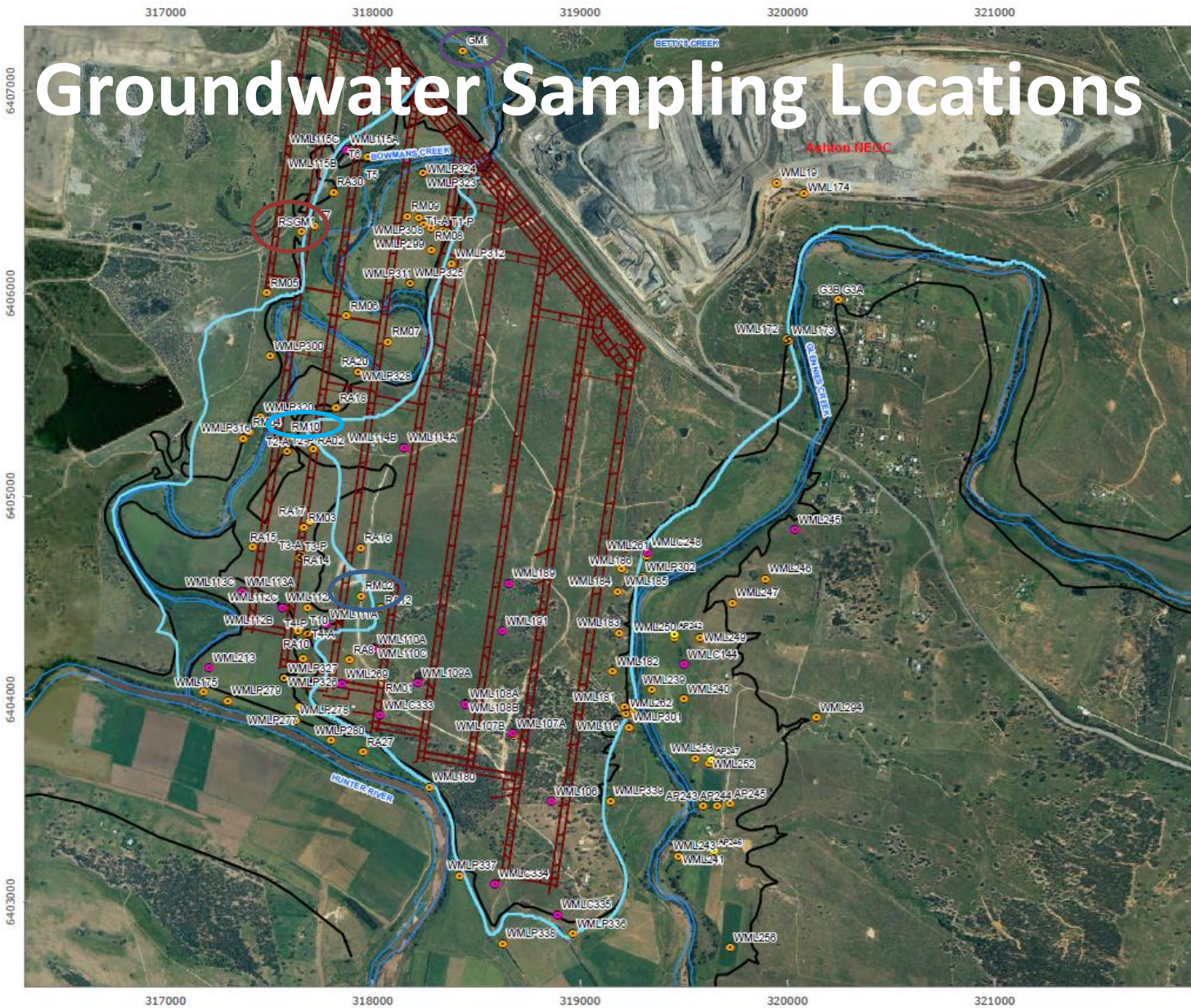


Surface Water Quality – EC

Hunter River Monthly Electrical Conductivity Levels 2015 - 2016



Groundwater Sampling Locations



- LEGEND**
- Standpipe Piezometers
 - Test Bores
 - Vibrating Wire Piezometers
 - Alluvium Boundary
 - Upper Liddell Mine Plan
 - 1:100 Years Flood Line
 - Creeks and River

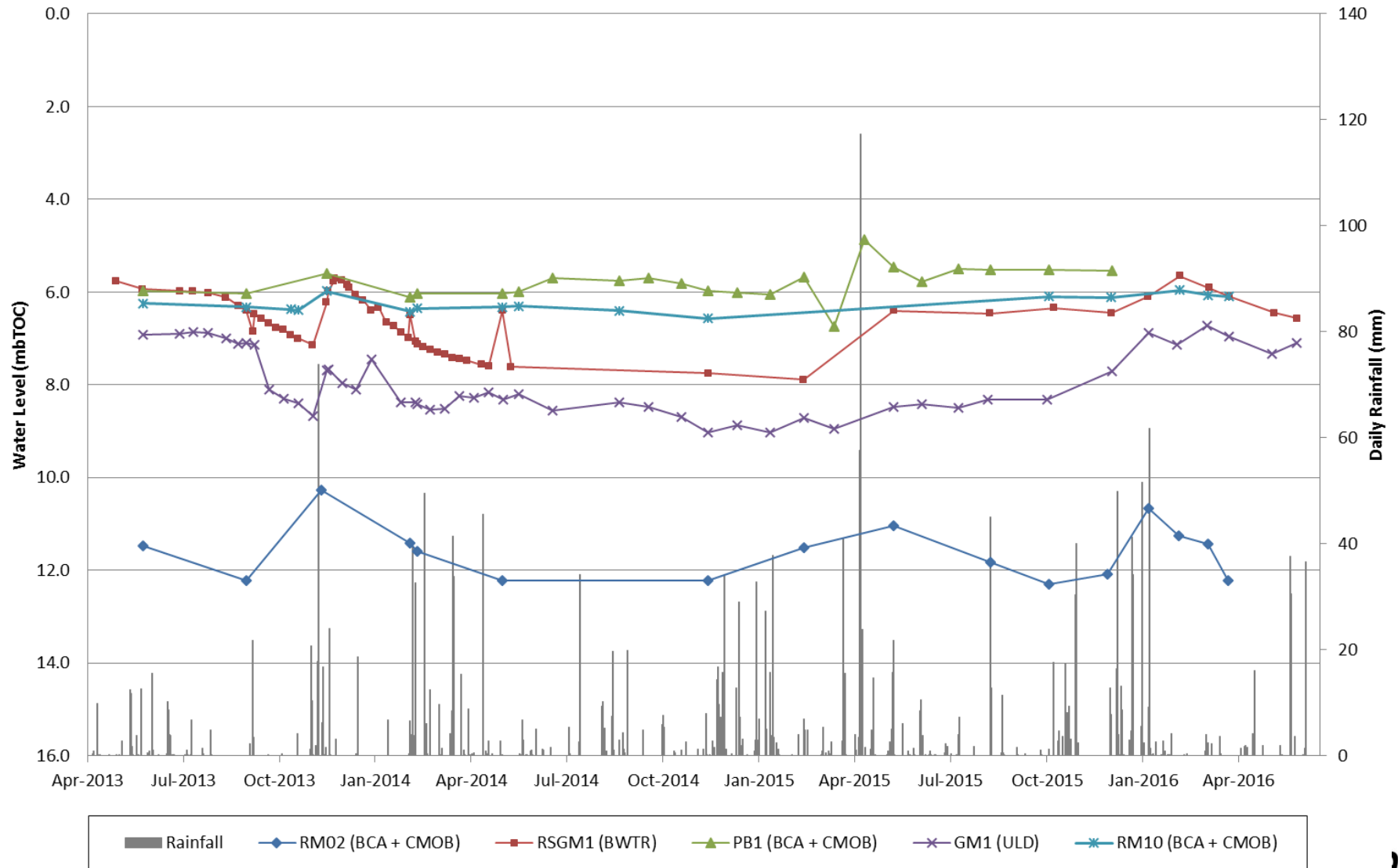


RPS Aquaterra
FIGURE 12
Groundwater Monitoring Network

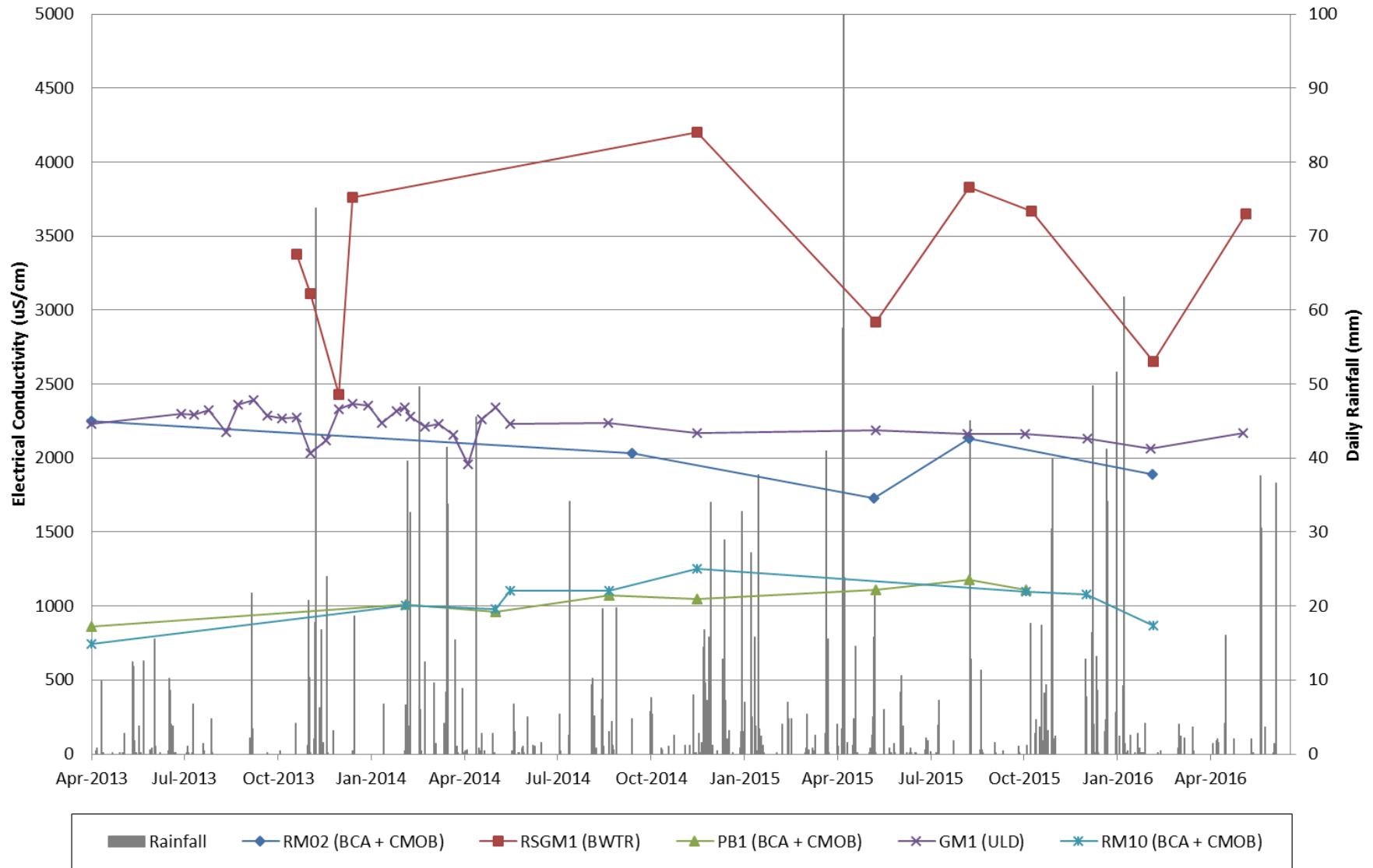
Floodlines Compiled from Hyer 2009 and Worley Parsons 2009

AUTHOR	TL	PROJECT NO	5386
CHECKED BY	JVA	REVISION	B
DATE	19/07/2012	DRAWING NO	0306

Groundwater – Standing Depth



Groundwater – EC



Noise Monitoring

Attended noise monitoring is conducted Monthly.

There were no exceedances during the reporting period

Table 1
ACP Noise Monitoring Results – 2 June 2016 – Night

Location	Time	dB(A) Leq	Comments	WS (m/s)/ Direction	Inversion °C/ 100m	ACP Noise Sources
N2	10:44 pm	50	Traffic (50), insects (26), ACP inaudible	1.7/82	>+3	n/a
N3	11:03 pm	44	Traffic (44), insects (28), ACP inaudible	2.1/81	>+3	n/a
N4	11:32 pm	40	Traffic (40), frogs & insects (25), ACP inaudible	1.5/87	>+3	n/a

What else is going on?

- Groundwater Bore Installation
- Gas Well Drilling
- Archaeological salvaging works
- 2016 NSW Minerals Council Environment Awards
 - Bowmans Creek Diversion is a finalist

FINALIST

**2016 NSW MINING
HEALTH, SAFETY,
ENVIRONMENT &
COMMUNITY AWARDS**



Community Support Program

- Community projects supported by Ashton Coal in the Upper Hunter are during Q1 2016 include:

Singleton Public School P&F	Special Education Support Unit bicycle upgrade
Witmores	Tail lifter for truck
Singleton Mayoral Scholarship awards	Scholarship program

- 30 Sep 2016 – next round.



Camberwell update

- Camberwell property
 - 32 homes tenanted, 1 vacant
 - Safety audit of electrical wiring through all homes
 - Upgrades to pool fencing to meet SSC compliance
 - Grass fire near 45 Glennies St – 13 April 2016
 - Bloomfield purchasing of Ernst property
- Trevor Burgess – interest in CCC

Any Questions?