



Ashton Coal Operations Pty Ltd Community Consultative Committee Presentation – 29 November 2016



Action List

ITEM	RESPONSIBILITY	PROGRESS UPDATE
Tree Screen at New England Hwy requires maintenance	DS	Nothing to report at this stage
Poor housekeeping at two privately tenanted, Ashton owned residences, in Camberwell requires addressing	DS	Routine inspections completed in early November.

Ashton Coal Key Statistics

Ashton Coal Key Statistics		
	2016 Budget (YTD)	2016 Actual
ROM (t)	1,706,062	1,690,666
Product Coal (t)	758,975	781,308
Total Coal Sales (t)	781,350	844,563
Lost Time Injury (LTIFR)	9.5	20.5
Total Recordable Injuries (TRIFR)	25.53	26.1
Total Employees (FTE)	201	198
Complaints	0	1
Environmental Incidents	0	0

- Complaint Received on 11/09/2016 at 11:00am regarding dozer and engine noise. A review of ACOL operations indicated that there was no dozer operating at the time.

Current Operations

- ACOL is currently mining in LW106A. LW106A is a short panel and we plan to move into LW201 in the third seam (Upper Lower Liddell) in arch-April 2017.
- Development is continuing in the Upper Lower Liddell seam forming longwall blocks and main headings.
- South East Open Cut – no further movement.



Exploration Activities

No exploration was conducted in EL5860 or EL4918 during the reporting period.



Approvals Update

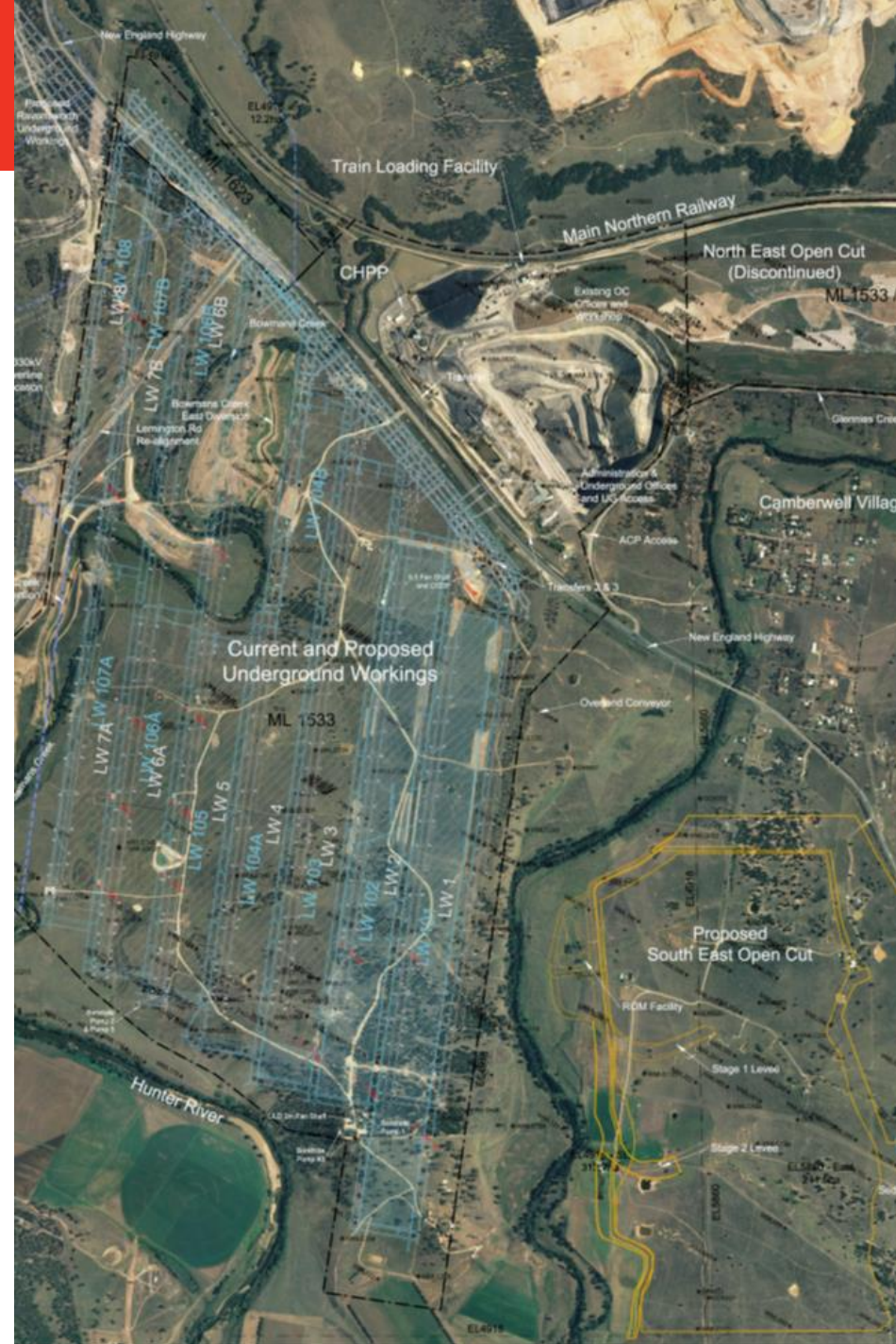
As mining at ACOL progresses additional approvals are required to continue operations.

Recent Approval determinations include:

- DA Mod 5
- Environment Protection License Variation – Air Quality Monitoring Program Changes
- Ausgrid LW106 Asset Management Plan

Upcoming Approvals

- LW201-204 Extraction Plan was lodged 8 November 2016.



DA Mod 5 – CCC Implications

- DA Mod 5 was prepared to allow for the integration of the Underground and SEOC approvals.
- The recent approval updates/modernises the Ashton Coal consent
- Some changes to the CCC may be required due to the amended CCC condition →

Community Consultative Committee

7. The Applicant must establish a CCC for the development to the satisfaction of the Secretary. This CCC must:
 - (a) be operated in general accordance with the *Guidelines for Establishing and operating Community Consultative Committees for Mining Projects* (Department of Planning, 2007, or its latest version), and
 - (b) include the following provisions in its terms of reference:
 - (i) the CCC must be provided with all strategies, plans, reviews and incident reports generated during the life of the development;
 - (ii) the CCC may not be bound by confidentiality provisions in relation to these documents;
 - (iii) the CCC can, from time to time, make recommendations to the Secretary, Minister and all relevant agencies; and
 - (iv) the CCC can, from time to time, request representatives from government agencies to attend meetings as required.

The members of the CCC must be paid if they so request by the Applicant at the rate for sitting fees set out in the NSW Premier and Cabinet document, *Guidelines for NSW Board and Committee Members: Appointments and Remuneration*.

Notes:

- *The CCC is an advisory committee. The Department and other relevant agencies are responsible for ensuring that the Applicant complies with this consent.*
- *In accordance with the guideline, the Committee must include an independent chair and appropriate representation from the Applicant, Council, recognised environmental groups and the local community.*
- *In establishing the CCC, the Department will accept the continued representation from existing CCC members. The CCC may be combined with any similar CCC for the Ashton Mine Complex.*

EPL Variation - Air Quality Monitoring Changes

- EPA implemented Upper Hunter Air Quality Monitoring Network
- Program has been in place for several years and is operating well
- EPA amending all Environmental Protection Licenses (EPL) to remove duplicate monitoring
- Ashton's monitoring program will be consolidated as per the EPL and Air Quality Management Plan →
- An amendment of the AQMP was lodged with DPE to reflect the EPL changes



South East Open Cut Project (SEOC)

- At law, an approval under the *EP&A Act* is a **right and not an obligation** hence it is up to the proponent to decide if and when it chooses to “**take up**” the approval.
- Only at this time should the approval be enlivened and conditions become enforceable.
- Ashton is proposing to modify the South East Open Cut (SEOC) Project Approval to ensure that the concept of “taking up” an approval is express in the consent.
- An equivalent condition was included in the recent approval of the Mt Thorley and Warkworth mine projects.

South East Open Cut Project (Cont'd)

- The Modification would be **administrative** in nature and would seek to:
 - Impose a condition that requires Ashton to formally notify the Secretary (Planning) of its intention to commence development – development could only commence when the Secretary agreed that Ashton had met all its obligations under the SEOC Approval, such as satisfying condition 10A with respect to property 129, preparing management plans, etc.
 - Defer requiring fulfilment of any obligation under the conditions of approval until such time that Ashton chose to “**take up**” the approval.
- The Modification **would not change condition 10A:**

*The Proponent **must not carry out any development work** on the Project site until it has:*

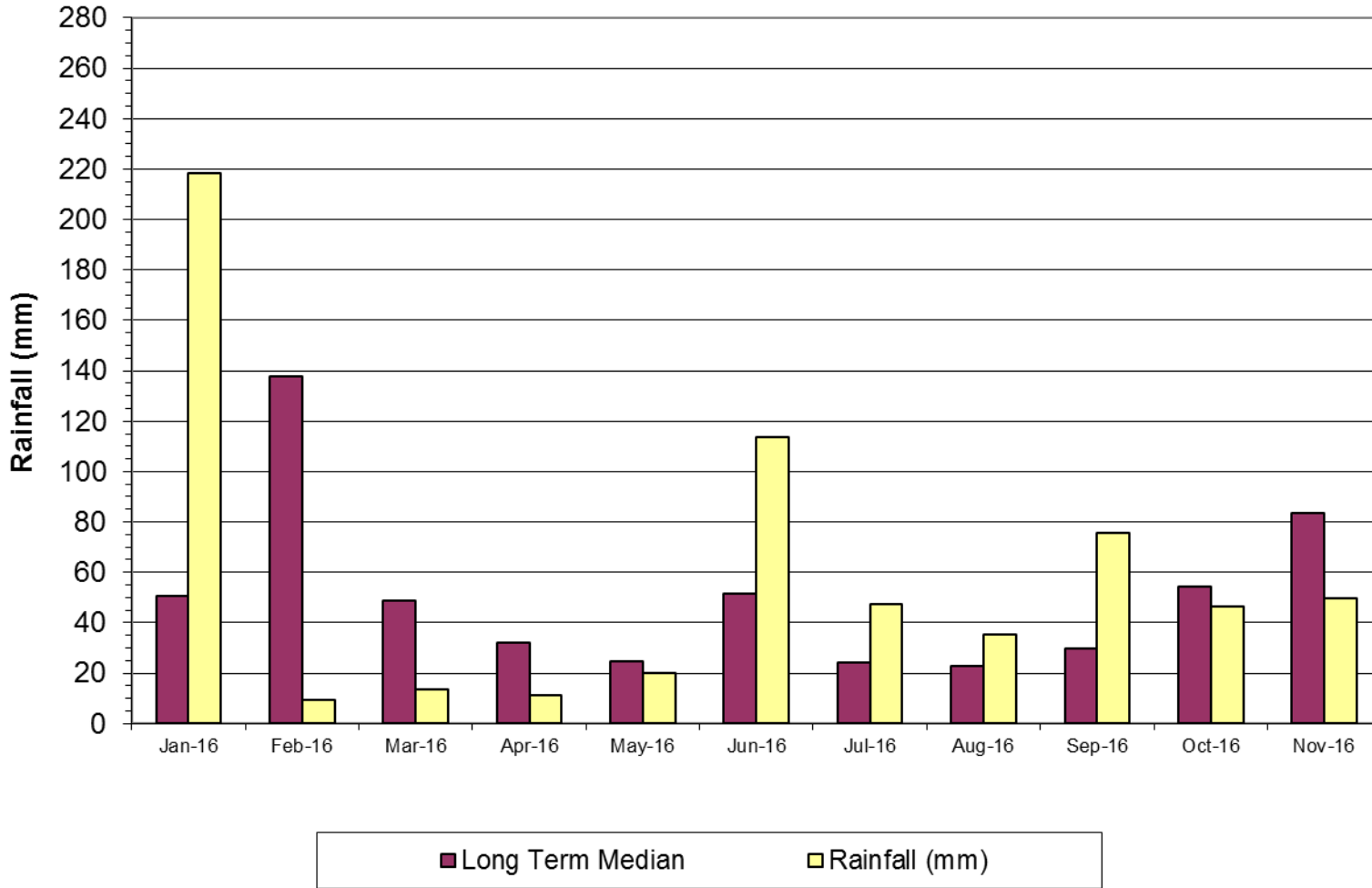
Purchased, leased or licensed property 129 from the owner of property 129

Environment Monitoring Data

- The following slides present environmental monitoring data for the reporting period
- Meteorological
 - Rainfall
- Air Quality
 - Depositional Dust Gauges – Total suspended dust
 - PM10 – Tapered Element Oscillating Microbalance (TEOM)
- Surface Water – Glennies Ck, Bowmans Ck and Hunter River
- Groundwater – various aquifers
- Noise

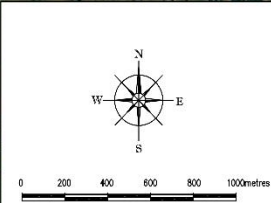
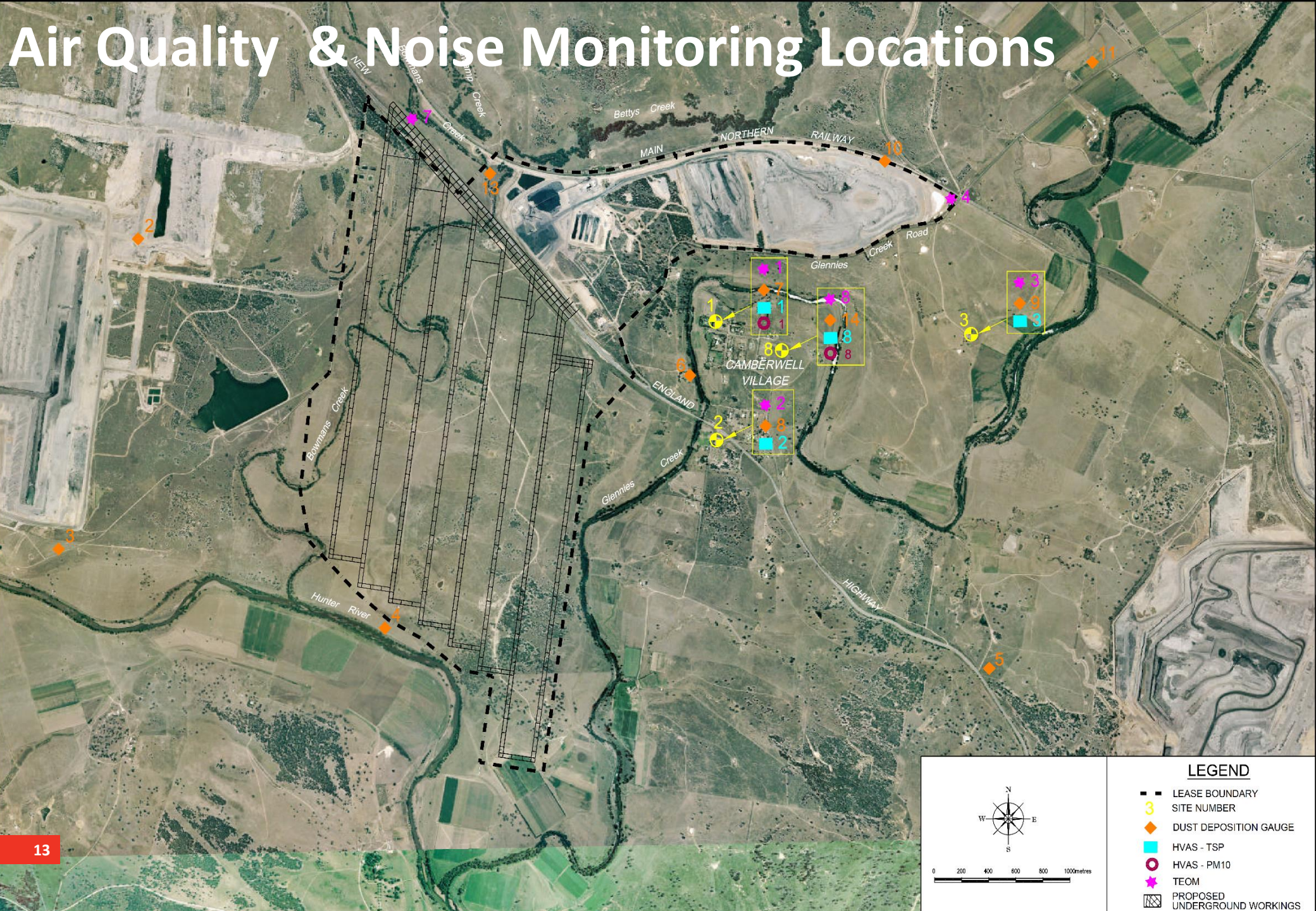
Rainfall

Rainfall at Repeater



YTD Rainfall:
640mm

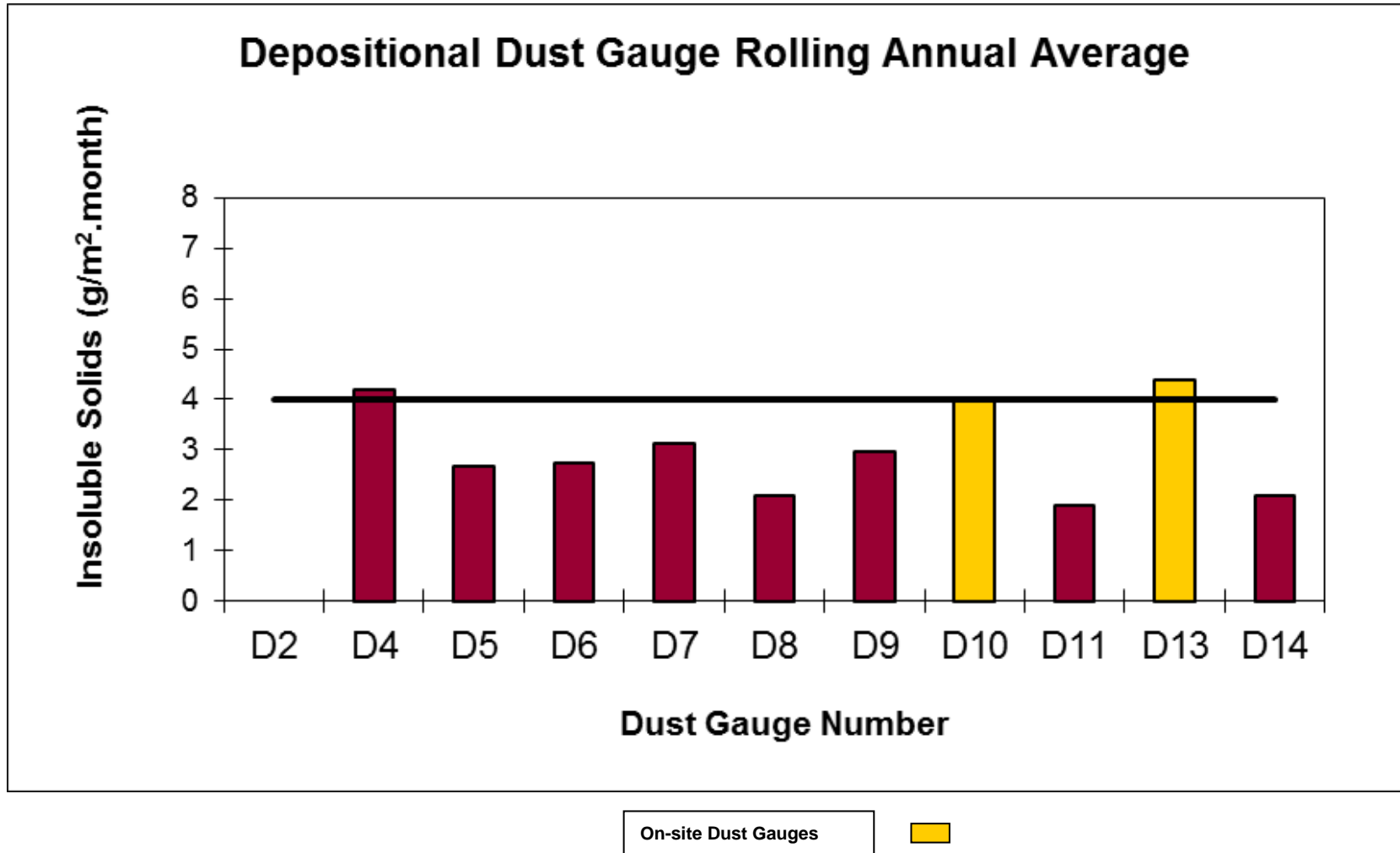
Air Quality & Noise Monitoring Locations



LEGEND

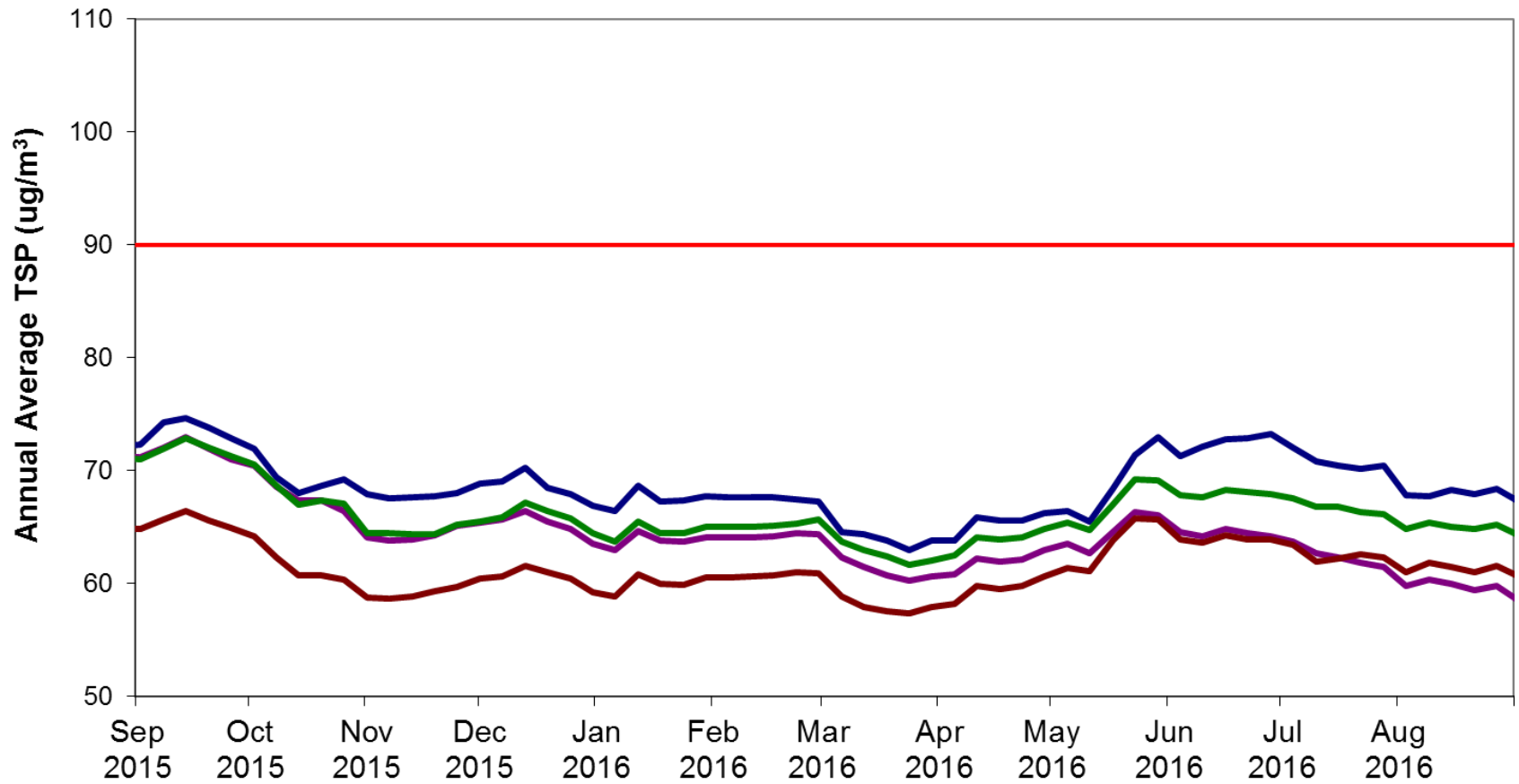
- LEASE BOUNDARY
- 3 SITE NUMBER
- ◆ DUST DEPOSITION GAUGE
- HVAS - TSP
- HVAS - PM10
- ★ TEOM
- PROPOSED UNDERGROUND WORKINGS

Depositional Dust



Total Suspended Dust

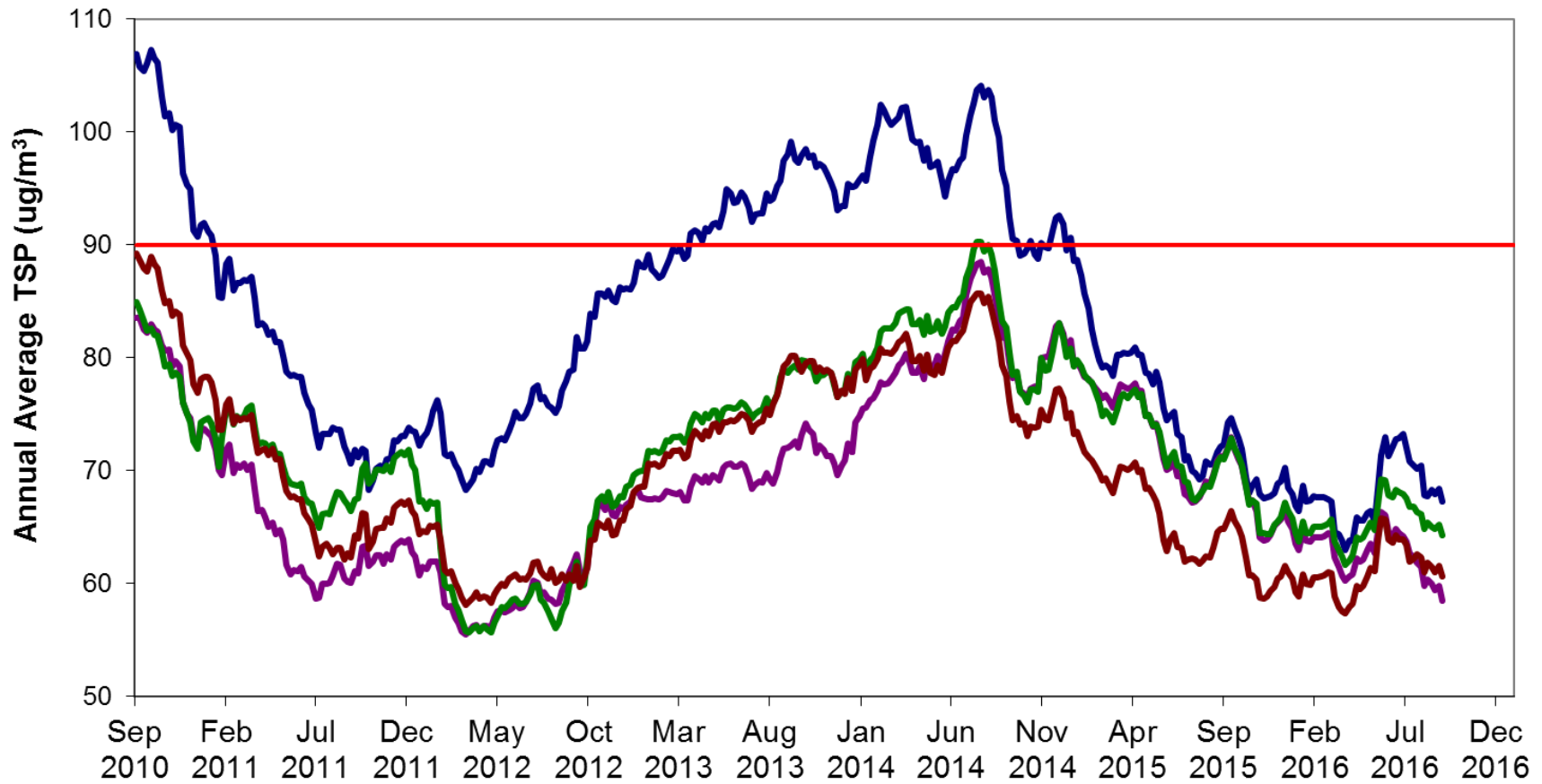
HVAS TSP Rolling Annual Average HVAS TSP All Sites



Site 1 - Rolling Annual Average Site 2 - Rolling Annual Average Site 3 - Rolling Annual Average Site 8 - Rolling Annual Average Annual Average Criteria - 90

Total Suspended Dust

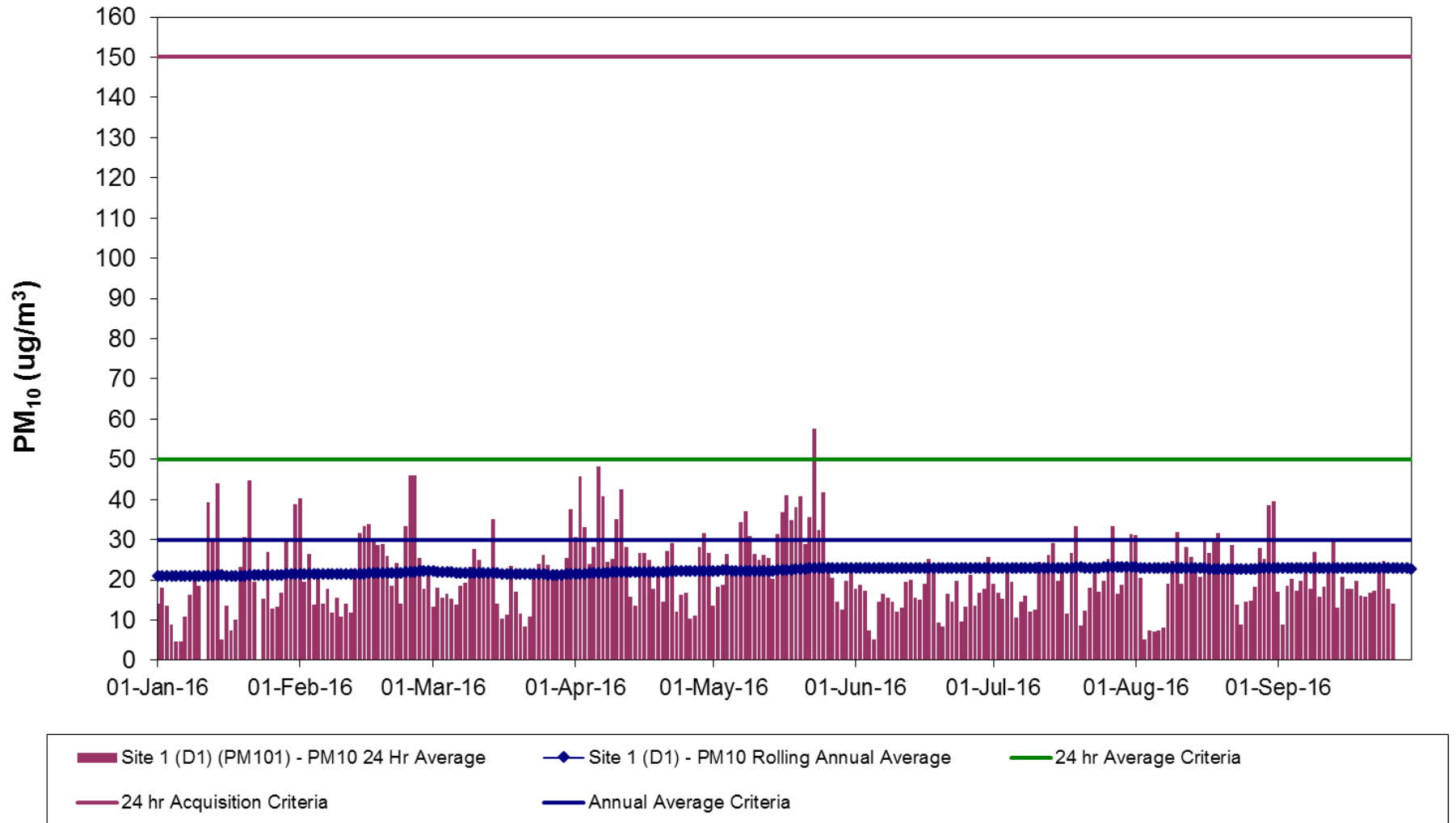
HVAS TSP Rolling Annual Average HVAS TSP All Sites



Site 1 - Rolling Annual Average Site 2 - Rolling Annual Average Site 3 - Rolling Annual Average Site 8 - Rolling Annual Average Annual Average Criteria - 90

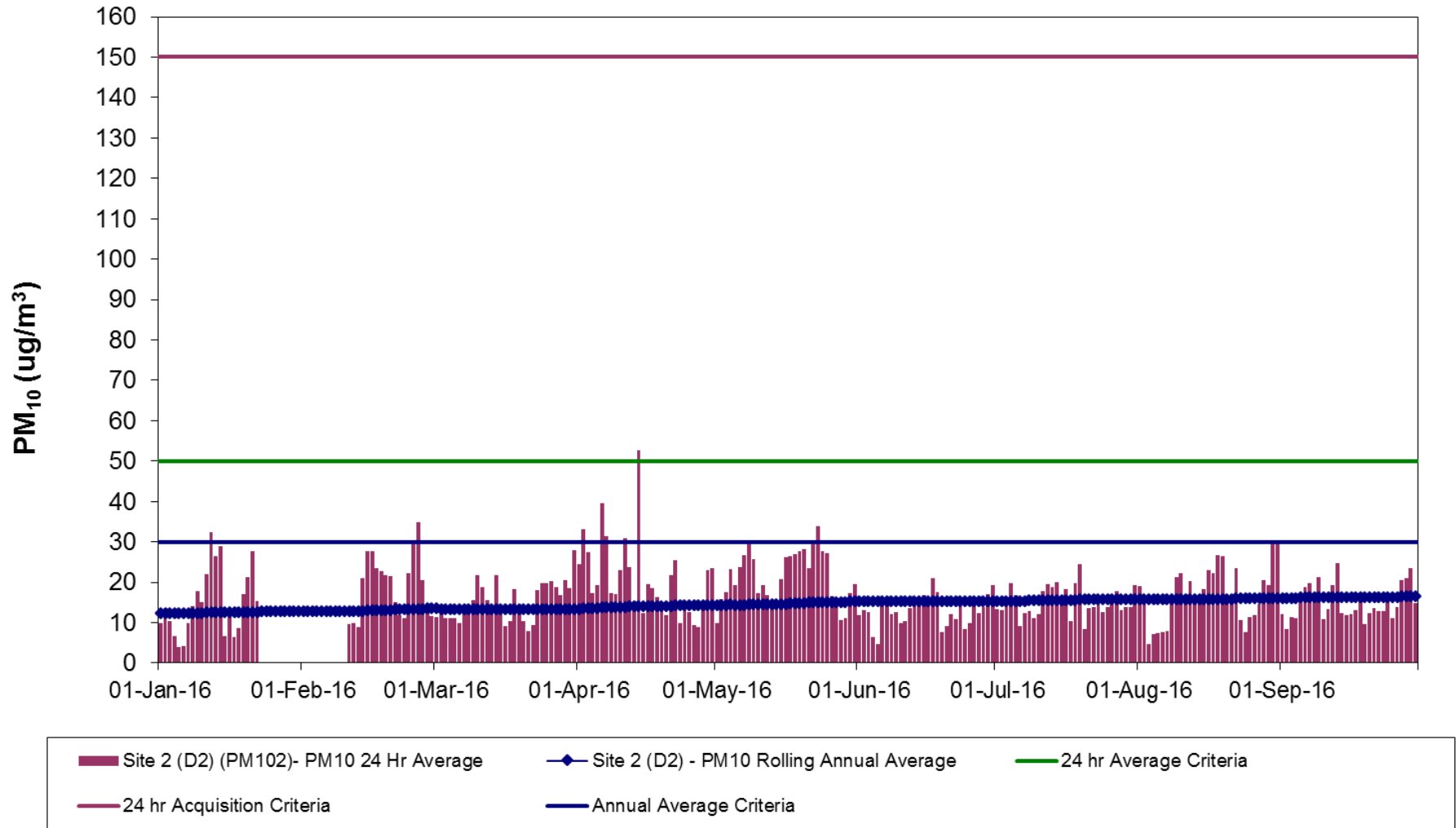
PM₁₀ Dust – Site 1

Site 1 TEOM PM₁₀ Results



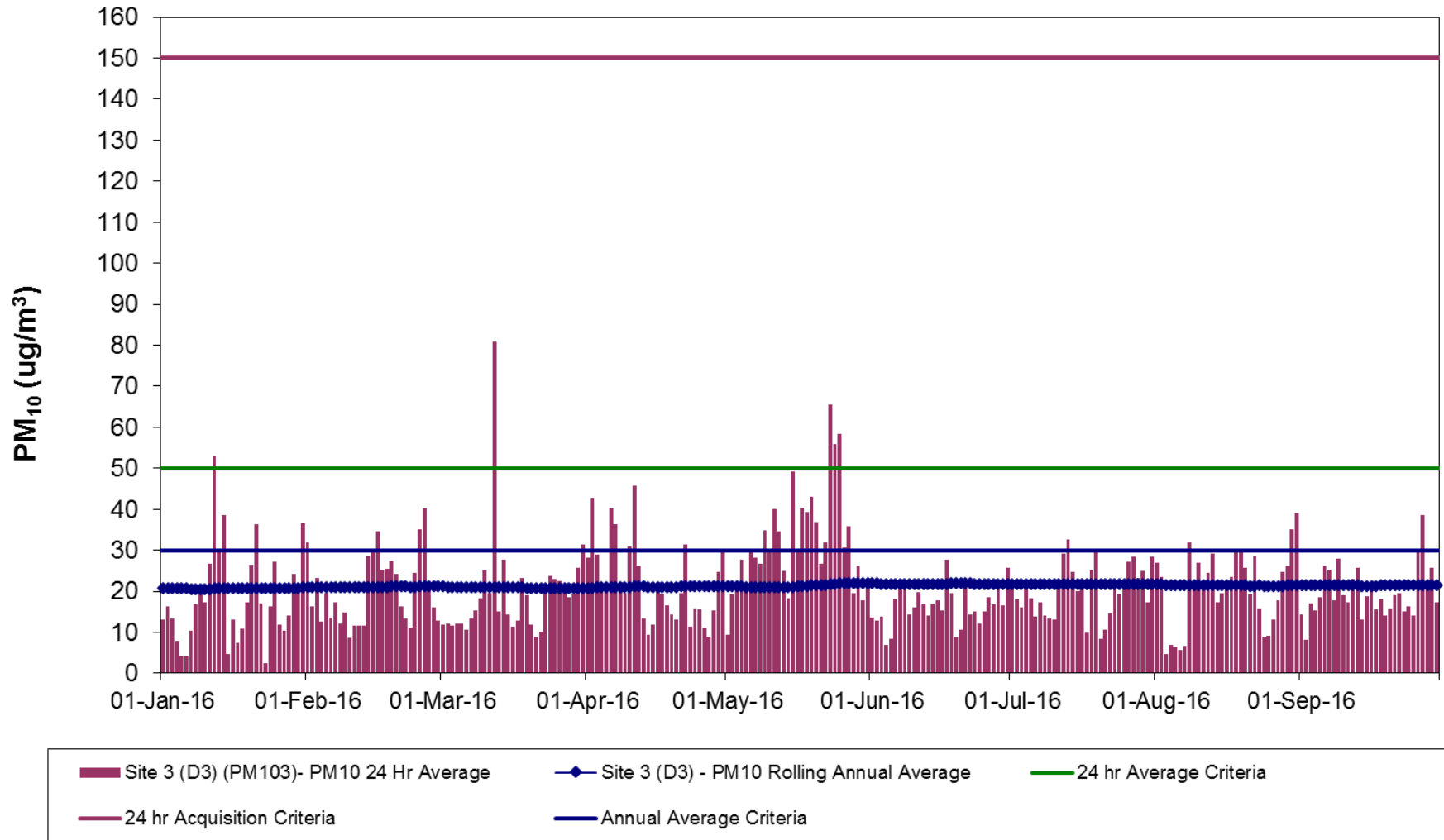
PM₁₀ Dust – Site 2

Site 2 TEOM PM₁₀ Results



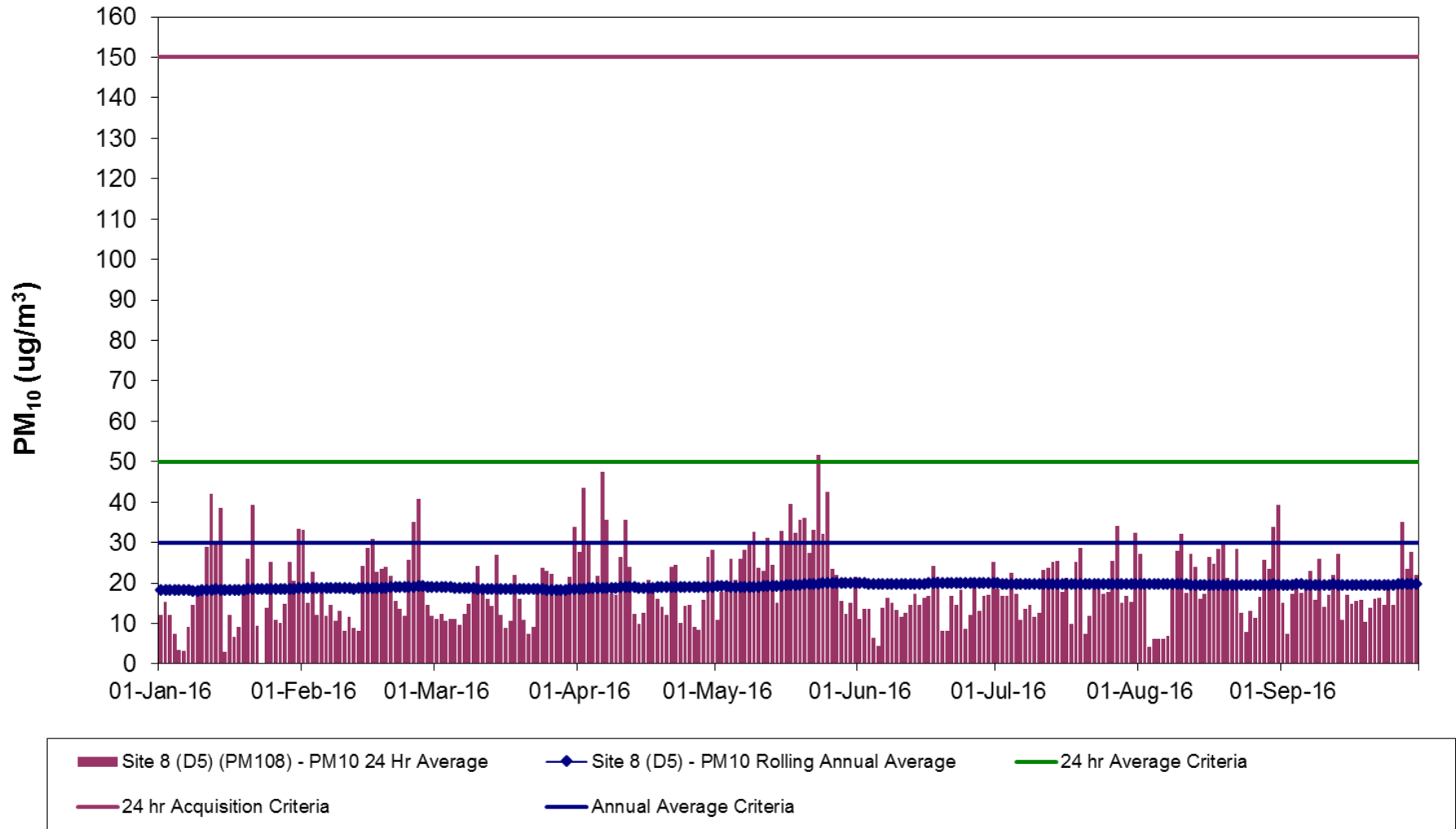
PM₁₀ Dust – Site 3

Site 3 TEOM PM₁₀ Results

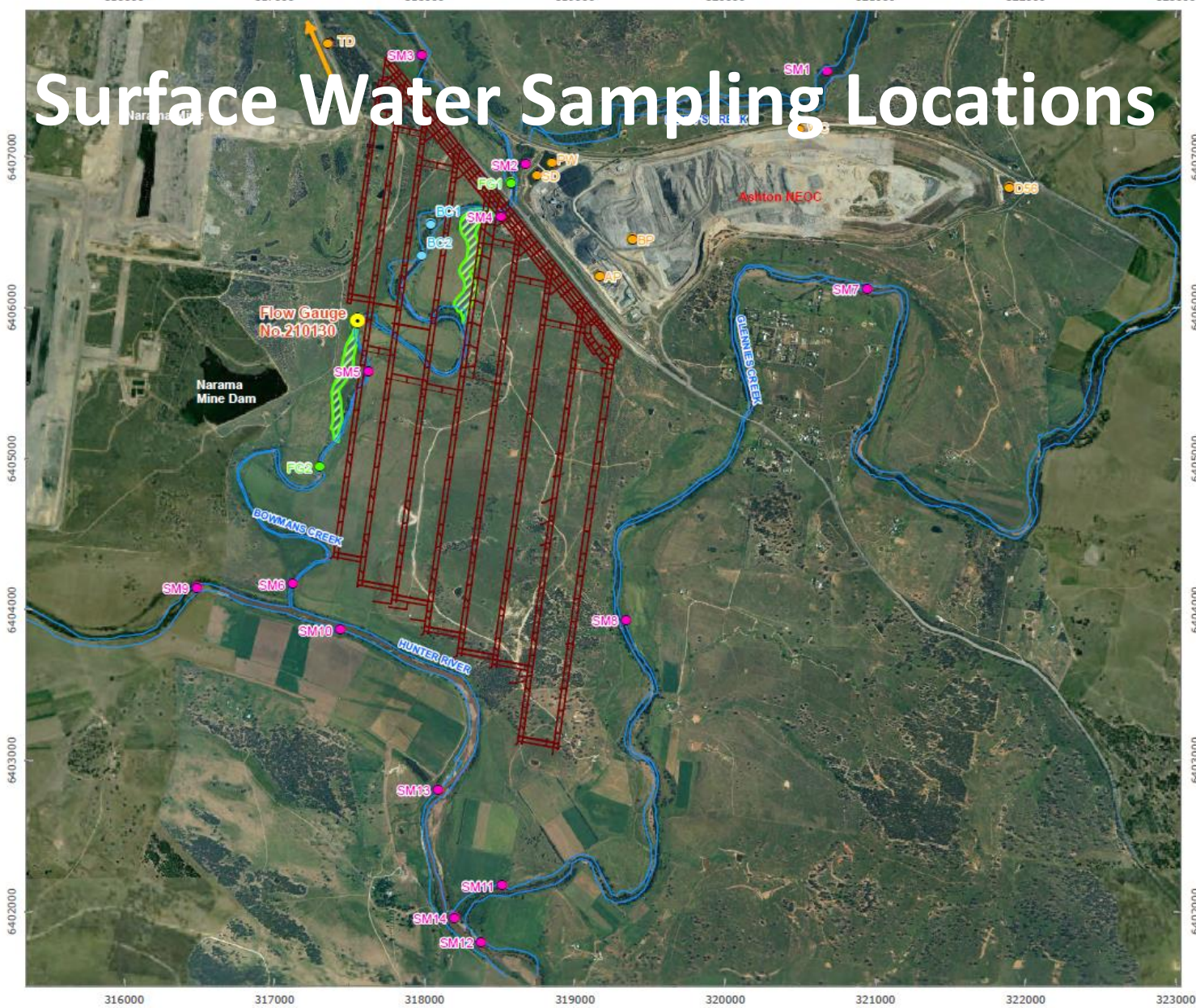


PM₁₀ Dust – Site 8

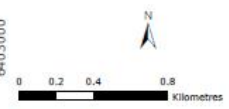
Site 8 TEOM PM₁₀ Results



Surface Water Sampling Locations



- LEGEND**
- Surface Water Monitoring Location
 - Onsite Water Management Monitoring Location
 - Bowmans Creek Monitoring Location
 - ACOL Flow Gauge
 - NSW Office of Water Gauge
 - Upper Liddell Mine Plan
 - Creeks or River
 - ▨ Diversion Footprint



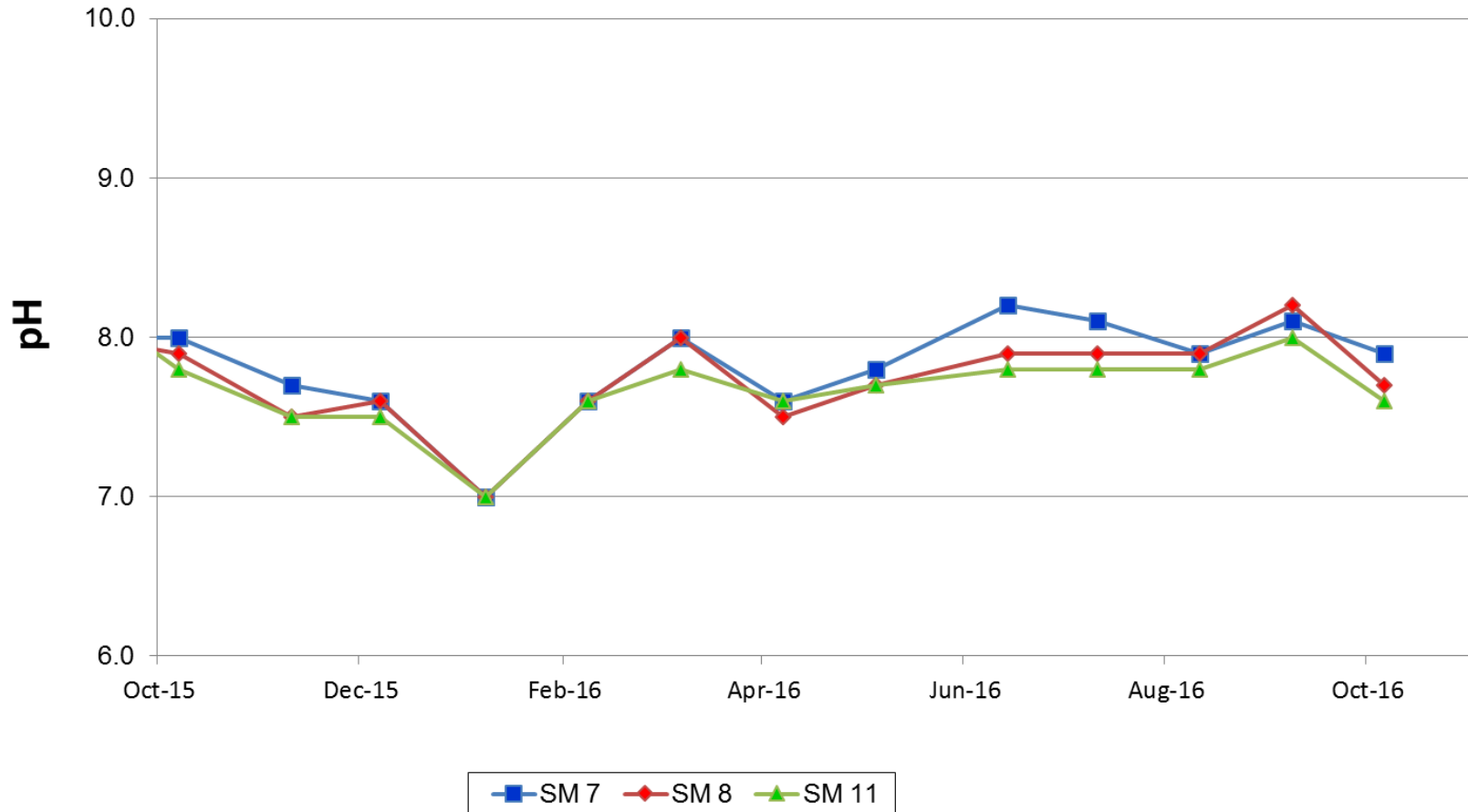
RPS Aquaterra

FIGURE 11
Surface Water Monitoring Network

AUTHOR	HZ	PROJECT NO	SSRE
CHECKED BY	JVDA	REVISION	A
DATE	19/07/2011	DRAWING NO	029e

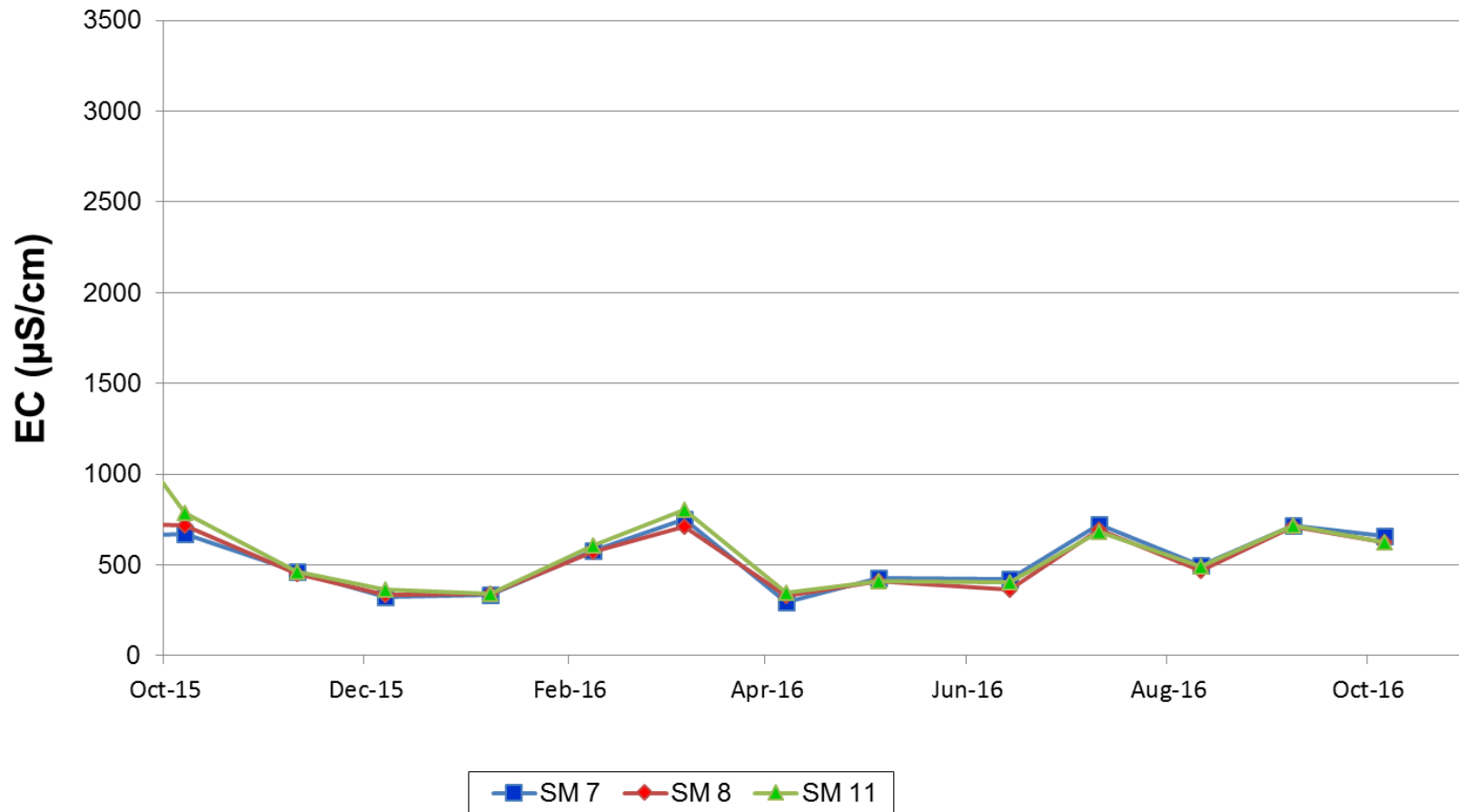
Surface Water Quality – pH

Glennies Creek Monthly pH Levels
2015 - 2016

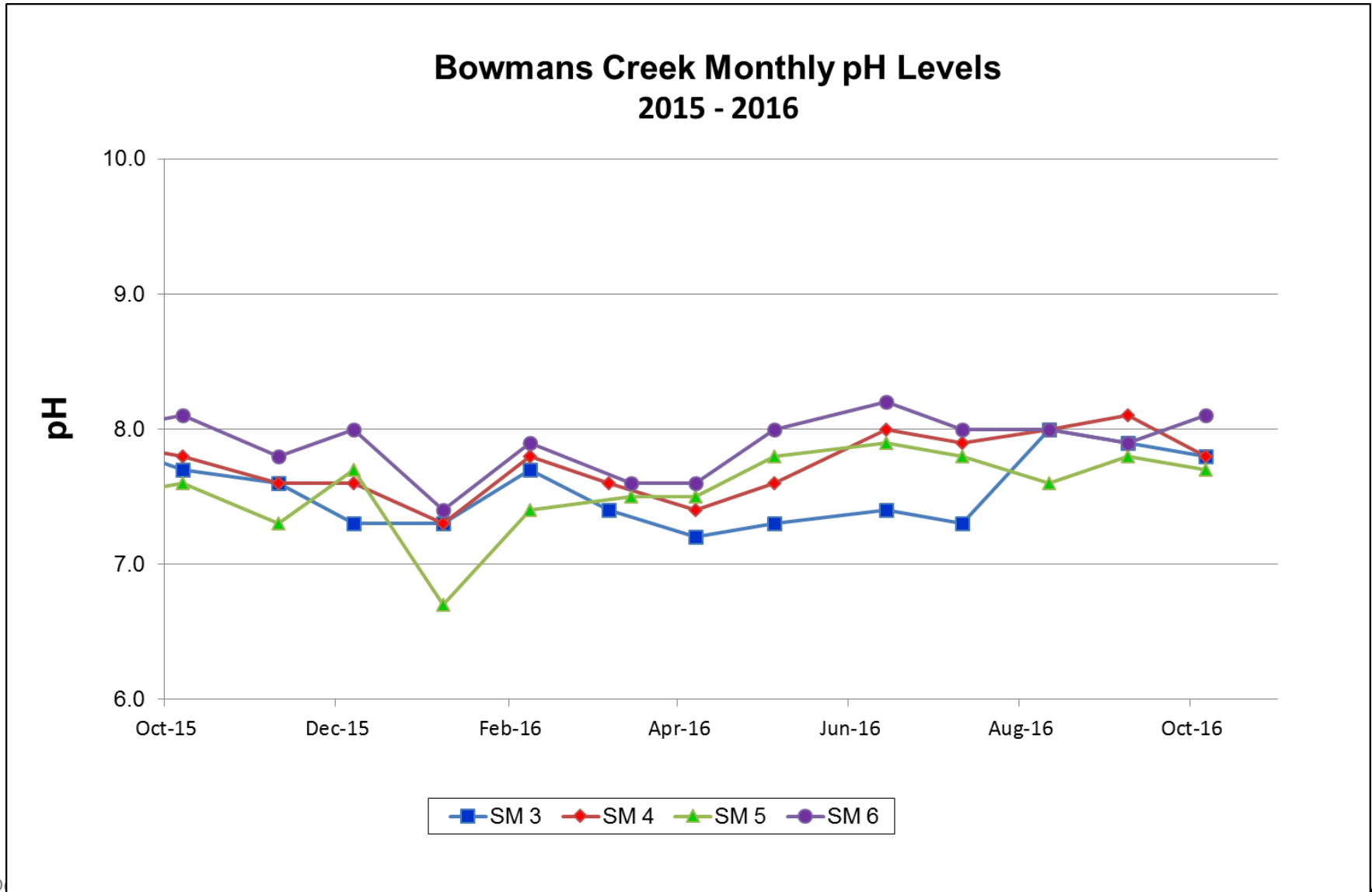


Surface Water Quality – EC

Glennies Creek Monthly Electrical Conductivity Levels 2015 - 2016

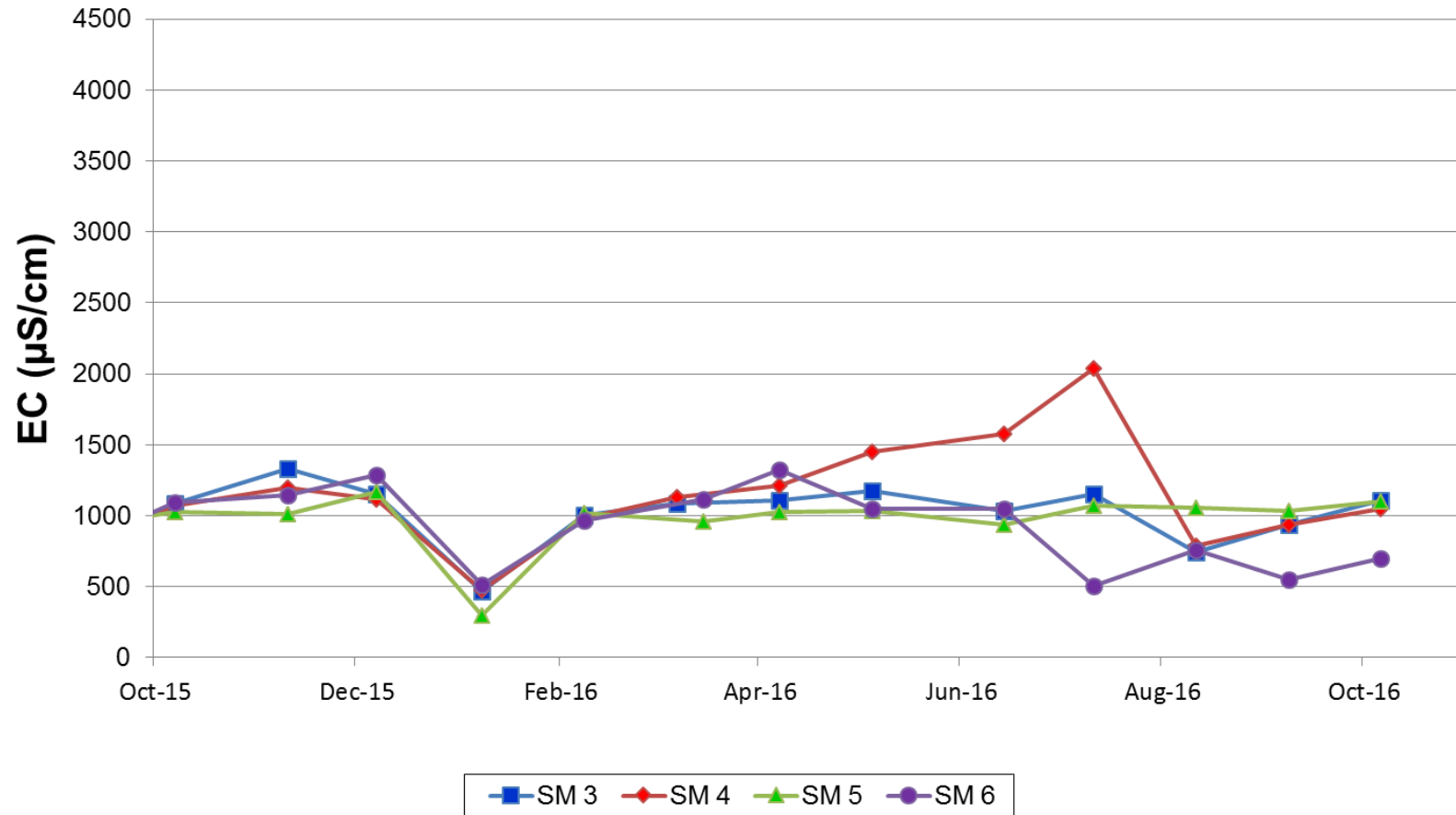


Surface Water Quality – pH

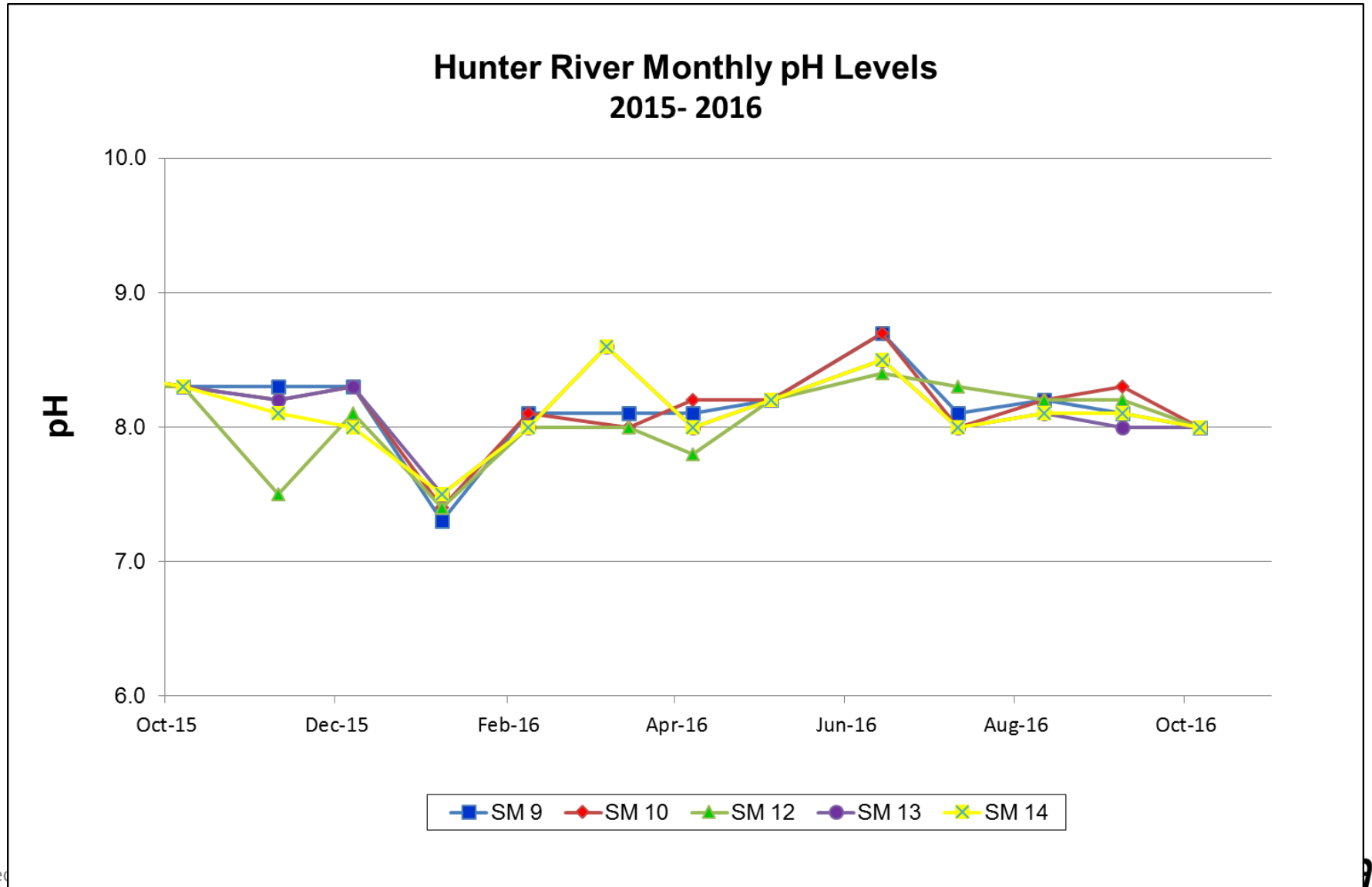


Surface Water Quality – EC

Bowmans Creek Monthly Electrical Conductivity Levels 2015 - 2016

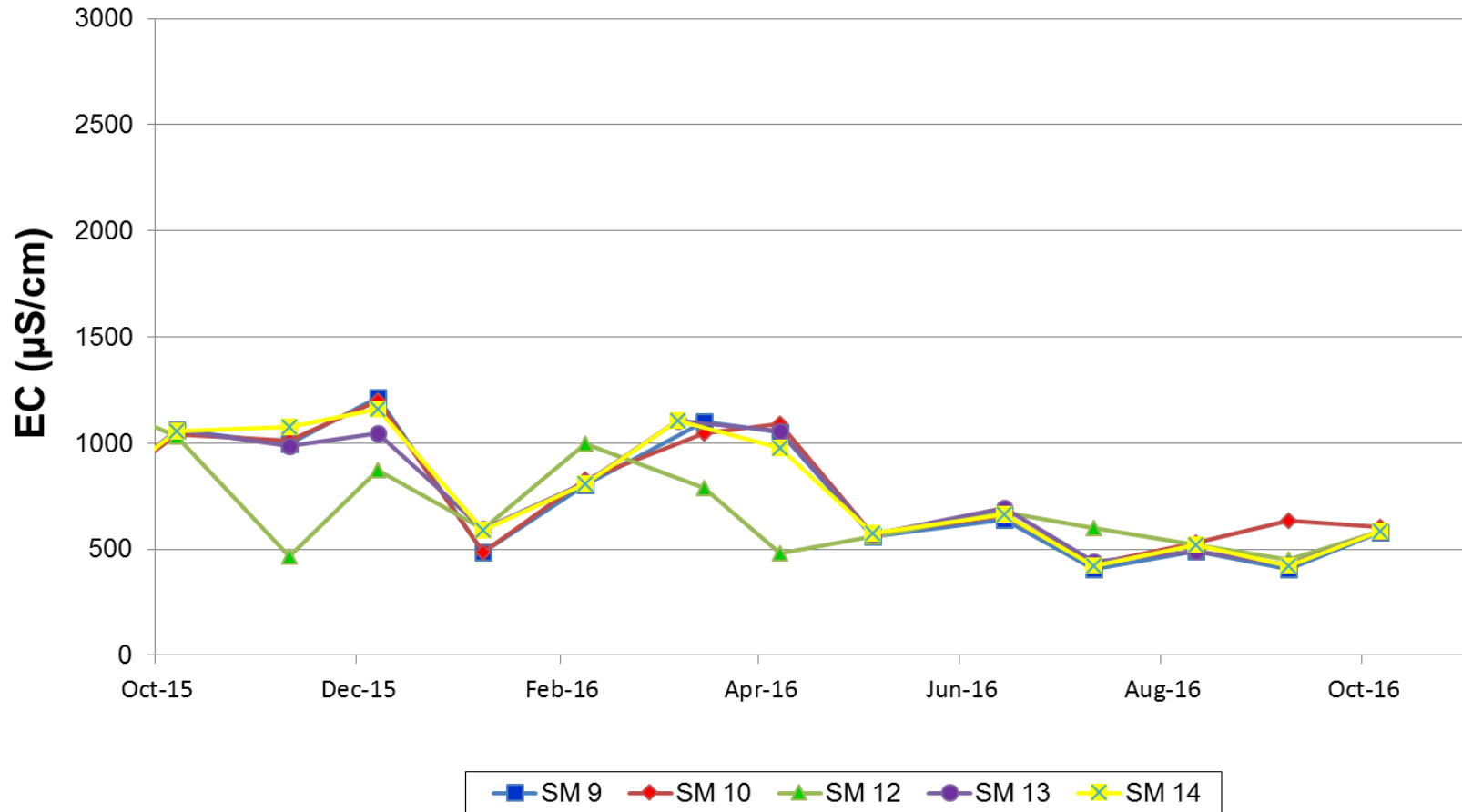


Surface Water Quality – pH

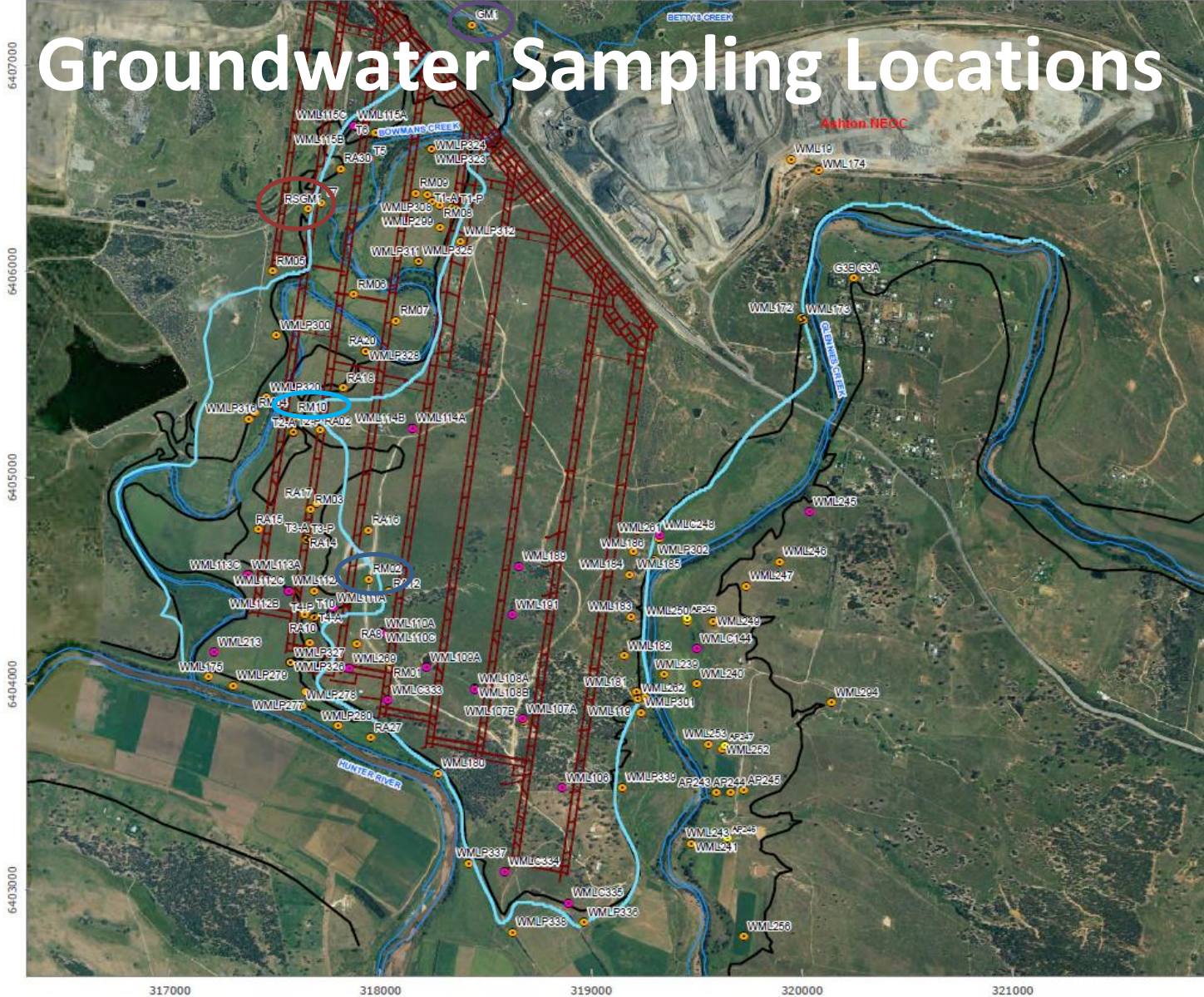


Surface Water Quality – EC

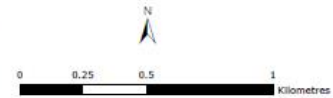
Hunter River Monthly Electrical Conductivity Levels 2015 - 2016



Groundwater Sampling Locations



- LEGEND**
- Standpipe Piezometers
 - Test Bores
 - Vibrating Wire Piezometers
 - Alluvium Boundary
 - Upper Liddell Mine Plan
 - 1:100 Years Flood Line
 - Creeks and River

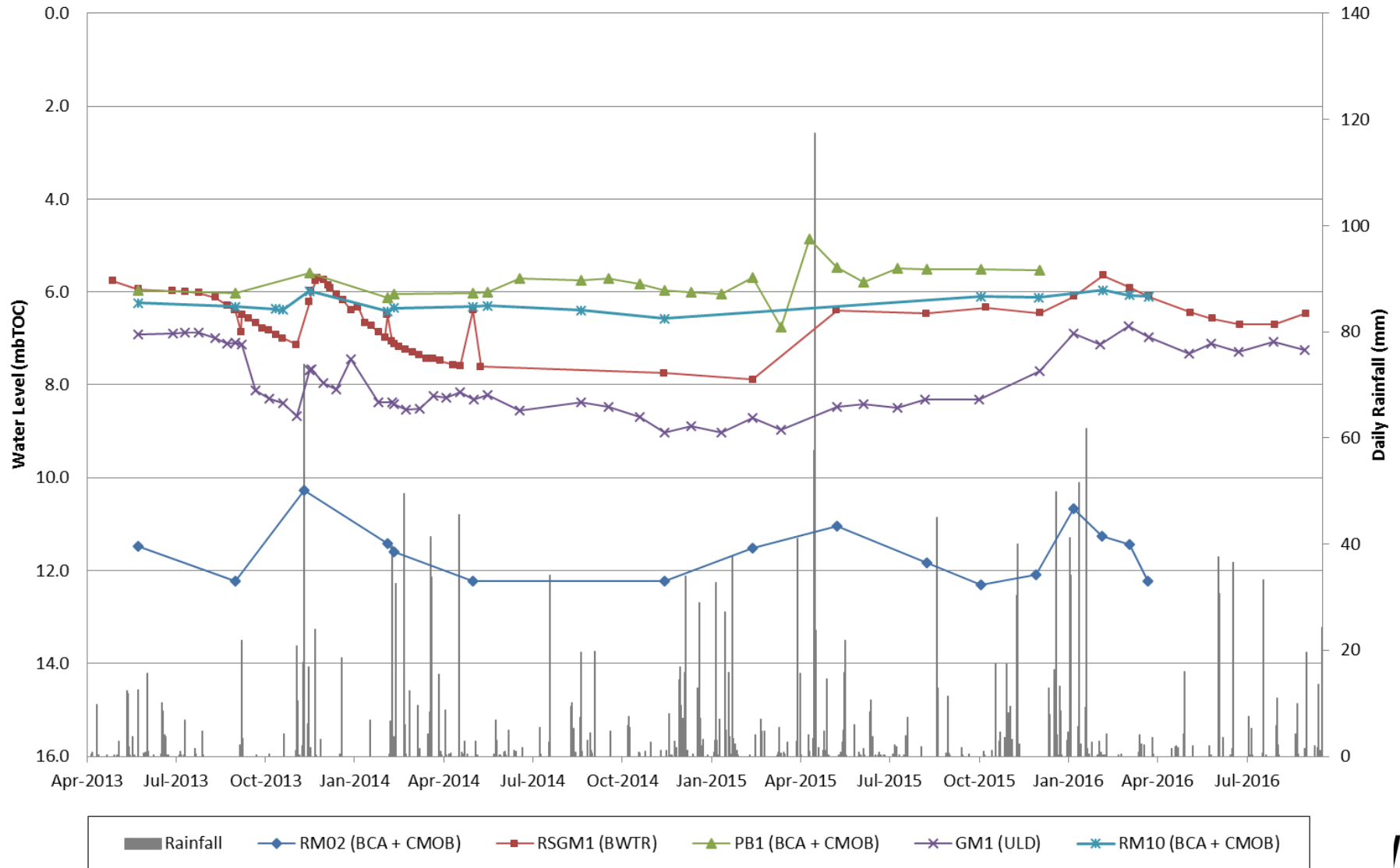


RPS Aquaterra
 FIGURE 12
 Groundwater Monitoring Network

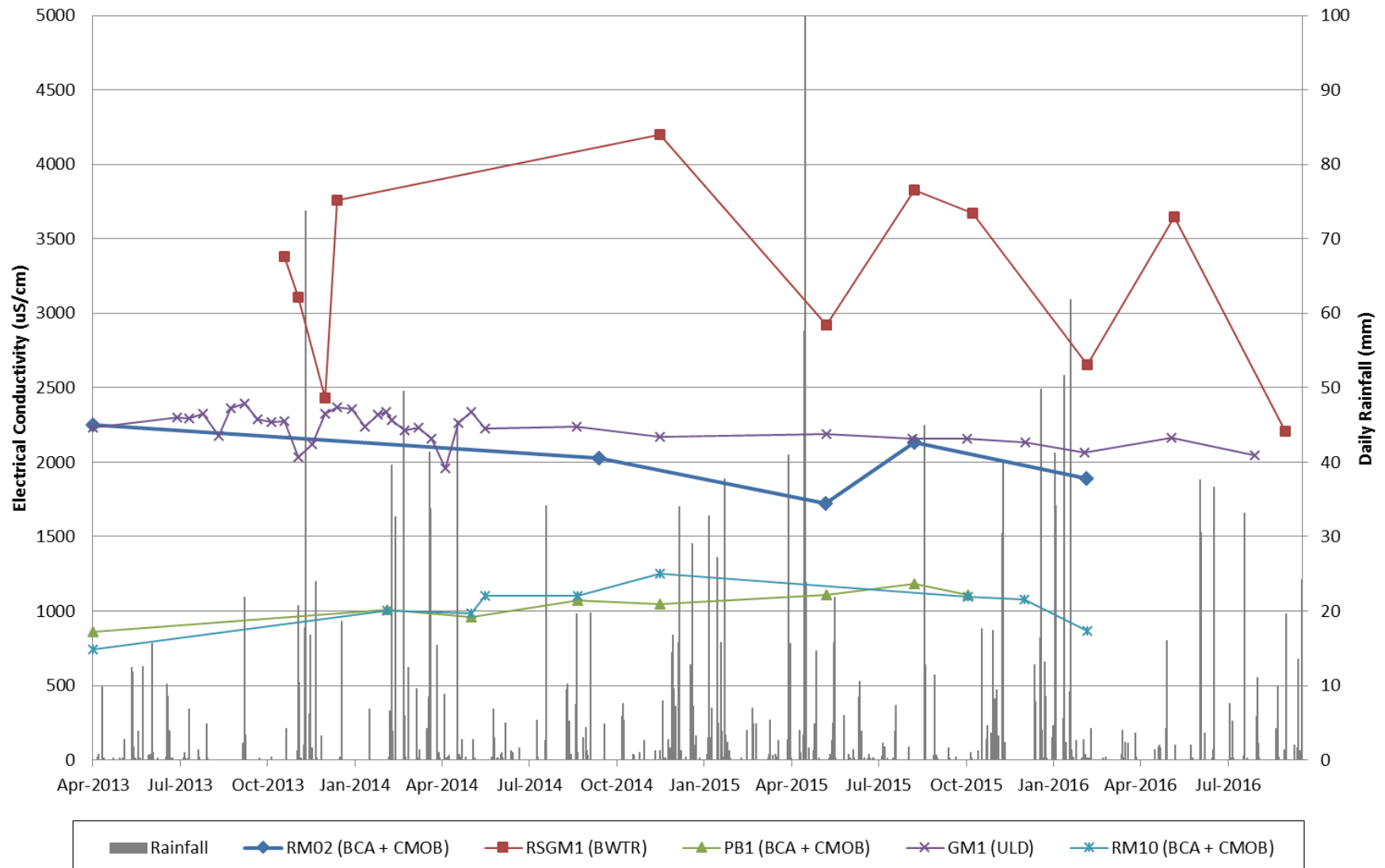
Floodlines Compiled from Hyer 2009 and Worley Parsons 2009

AUTHOR	TL	PROJECT NO	5386
CHECKED BY	JVA	REVISION	B
DATE	19/07/2012	DRAWING NO	030b

Groundwater – Standing Depth



Groundwater – EC



Noise Monitoring

Attended noise monitoring is conducted Monthly.

There were no exceedances during the reporting period

Table 1 ACP Noise Monitoring Results – 20 September 2016 – Night						
Location	Time	dB(A) Leq	Comments	WS (m/s)/ Direction	Inversion °C/ 100m	ACP Noise Sources
N2	1:00 am	51	Traffic (51), other mine (32), frogs (25), ACP inaudible	0.7/247	>+3	n/a
N3	12:38 am	45	Traffic (45), other mine (33), frogs (26), ACP inaudible	0.5/6	>+3	n/a
N4	12:49 am	44	Traffic (42), frogs (39), other mine (30), ACP inaudible	0.7/290	>+3	n/a

What else is going on?

- Upper Hunter Mining Dialogue Stakeholder Annual Forum
- Muswellbrook Race Club
- CCC members invited to attend – contact Jo Casci at NSW MC jcasci@nswmining.com.au



The Upper Hunter Mining Dialogue

Many communities in the Hunter Valley have been built around the economic activity generated by mining, which continues to be a big part of the Hunter's economy, injecting around \$6 billion in wages and payments to local businesses each year.

The growth of mining in the Upper Hunter has resulted in some challenges and concerns about infrastructure and services, land rehabilitation, water, affordable housing and air quality.

The Upper Hunter Mining Dialogue brings together local miners, community and business leaders, environment groups, residents, regulators and other industries to better understand and address these challenges together.

The Upper Hunter Mining Dialogue is a new way of thinking and working together to minimise the cumulative impacts of mining.

- Camberwell property
 - 31 homes tenanted, 2 vacant
 - Safety audit of electrical wiring completed for all homes

Community Support Program

- Community projects supported by Ashton Coal during the 2nd half of 2016 include:

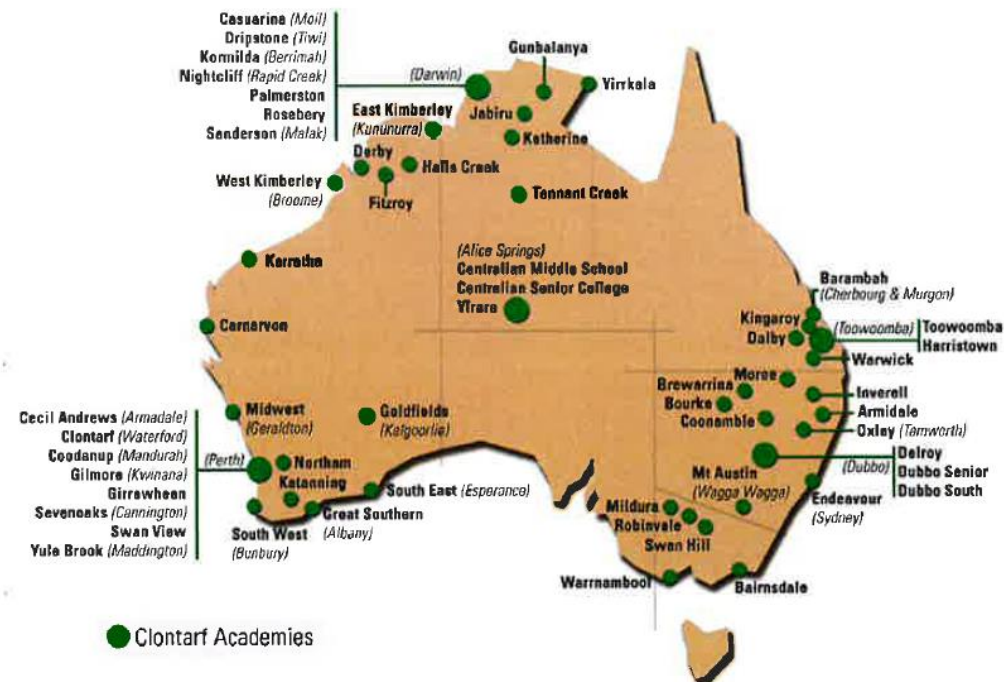
Macquarie University	Motor Neuron Disease
Weston Community Preschool	Maintenance to sandpit
Singleton Amateur Swimming Club	Lockers
Singleton Neighbourhood Centre	The open door @ SNC
Witmore Enterprises Incorporated	Timber Thicknesser
Singleton Public School P&C	Canteen Upgrade
Singleton Clontaff Foundation	Box trailer
Cancer Council - Team McInerney	Relay for Life

Yancoal Clontarf Partnership

- Rolling three-year corporate sponsorship arrangement with the Clontarf Foundation
- Clontarf Foundation is about improving the education, discipline, self-esteem, life skills and employment prospects of young Aboriginal men
- Clontarf Academy has recently been established at the Singleton Senior High School



Our Locations



Bowmans Creek Diversion Winner of 2016 Environmental Excellence award

- <K:\28 ADMINISTRATION\19 Conferences\2016 NSW Minerals Council HSEC Awards\08 Award video>



Congratulations Ashton Coal
Winner, 2016 Environmental Excellence Award.



Yancoal's Ashton Coal operations delivered a world-class diversion to Bowman's Creek, replicating a natural system to create a resilient and ecologically diverse stream that has improved environmental outcomes.

To learn more about this project visit nswmining.com.au

Any Questions?