



DECEMBER 2024

# STRATFORD & DURALIE UPDATE

## WHAT'S HAPPENING AT STRATFORD?

Coal extraction at Stratford ceased in July 2024. As part of our ongoing mine closure activities, bulk earthworks and reshaping works continue. In September, the Bowens Road North (BRN) void was successfully dewatered and backfilled, with reshaping efforts still progressing.

The decommissioning of the Coal Handling and Preparation Plant (CHPP) is also advancing as planned. Additionally, the Coal Stockpile Dozer has now left the site and is on its way to Yancoal's Cameby Downs site in Queensland, where it will continue to operate. We will continue to inform the community of any updates as closure works continue into 2025.



## WHAT'S HAPPENING AT DURALIE?

Mining operations at Duralie ceased in 2021, and the site has since transitioned to closure. Detailed mine closure planning continues, with decommissioning and infrastructure removal proceeding as scheduled. In early November, additional rehandle was successfully undertaken, and environmental works, including rehabilitation maintenance, are progressing to complete the planned activities for this year.







## UPDATE ON THE STRATFORD RENEWABLE ENERGY HUB (SREH)

The proposed Stratford Renewable Energy Hub (SREH) represents an opportunity for Yancoal to transition the Stratford site from an operating mine into a renewable energy project. If the project proceeds, it could generate more renewable energy for NSW via a pumped hydro scheme and supporting solar facility.

We are continuing to assess the feasibility of the project and have begun the process of securing approvals from both the NSW and Federal Governments.

A major step in this process was the finalisation and lodgment of the Environmental Impact Statement (EIS), which was on public exhibition by the NSW Department of Planning, Housing and Infrastructure (DPHI) from 2 October to 29 October 2024. During this period, we received a total of 96 submissions from interested community members and groups (from across all of NSW and Victoria). These submissions are available for review on the NSW Department of Planning website via [www.planningportal.nsw.gov.au/major-projects/projects/stratford-pumped-hydro-and-solar-0](http://www.planningportal.nsw.gov.au/major-projects/projects/stratford-pumped-hydro-and-solar-0).

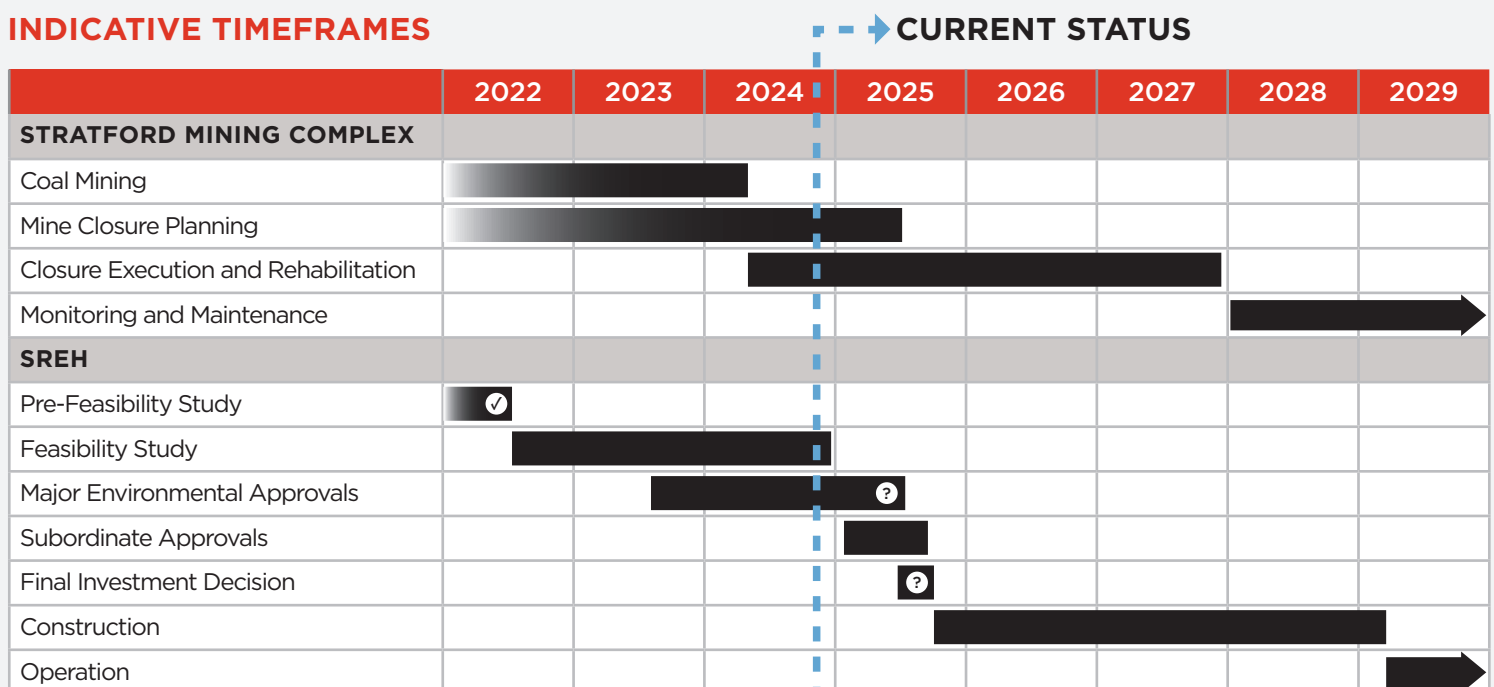
### Next steps include:

-  Yancoal to review the public submissions and feedback from government agencies.
-  Yancoal to provide a Submissions Report to NSW DPHI in response to issues raised during public exhibition of the EIS. Those who made a submission during the public exhibition period should receive an automatic email notification once Yancoal's Submissions Report has been lodged with the department.
-  NSW DPHI to complete its assessment and provide a recommendation to the Minister for Planning and Public Spaces.
-  The Minister to then make a final determination on the project application.

For the latest updates on the SREH and more information, please visit:

[stratfordrenewableenergyhub.com.au](http://stratfordrenewableenergyhub.com.au)

## INDICATIVE TIMEFRAMES





## YEAR IN REVIEW

As we close out 2024, we take this opportunity to highlight some of the key activities and milestones achieved by Stratford Coal.

- In July, we saw the last train of coal leave Stratford after almost 30 years of operation. Since then, our team's focus has been the decommissioning of infrastructure and ongoing closure activities.
- Detailed mine closure planning for Stratford and Duralie sites will continue to progress into 2025.
- The proposed SREH was declared Critical State Significant Infrastructure (CSSI) by the NSW Government, given its potential significance to the state's economy by helping to maintain critical energy security.
- Four community information sessions were held for the proposed SREH: two in March and two in September. These sessions provided an opportunity for community members and other key stakeholders to ask questions and learn more about the project.
- Throughout the course of the year, we have continued to update the community through

our newsletters, regular print ads in the local paper and other media. This included local radio, press, online content, and local letterbox drops, ensuring broad community awareness of the proposed project prior to any significant milestones.

- Additionally, we launched a dedicated landing page for the SREH project, featuring key updates, including a project overview video, site footage, and other important content.
- During 2024, our Community Support Program (CSP) supported a total of 29 local community groups and businesses, helping to strengthen the Gloucester and Stroud regions.
- The Stratford Coal Education Support Fund provided assistance to 17 local students and businesses, fostering learning the development in the local community.

We remain committed to keeping the community informed and engaged as we transition beyond an operating mine site. We thank you for your continued support, and we look forward to updating you further in the new year.

