

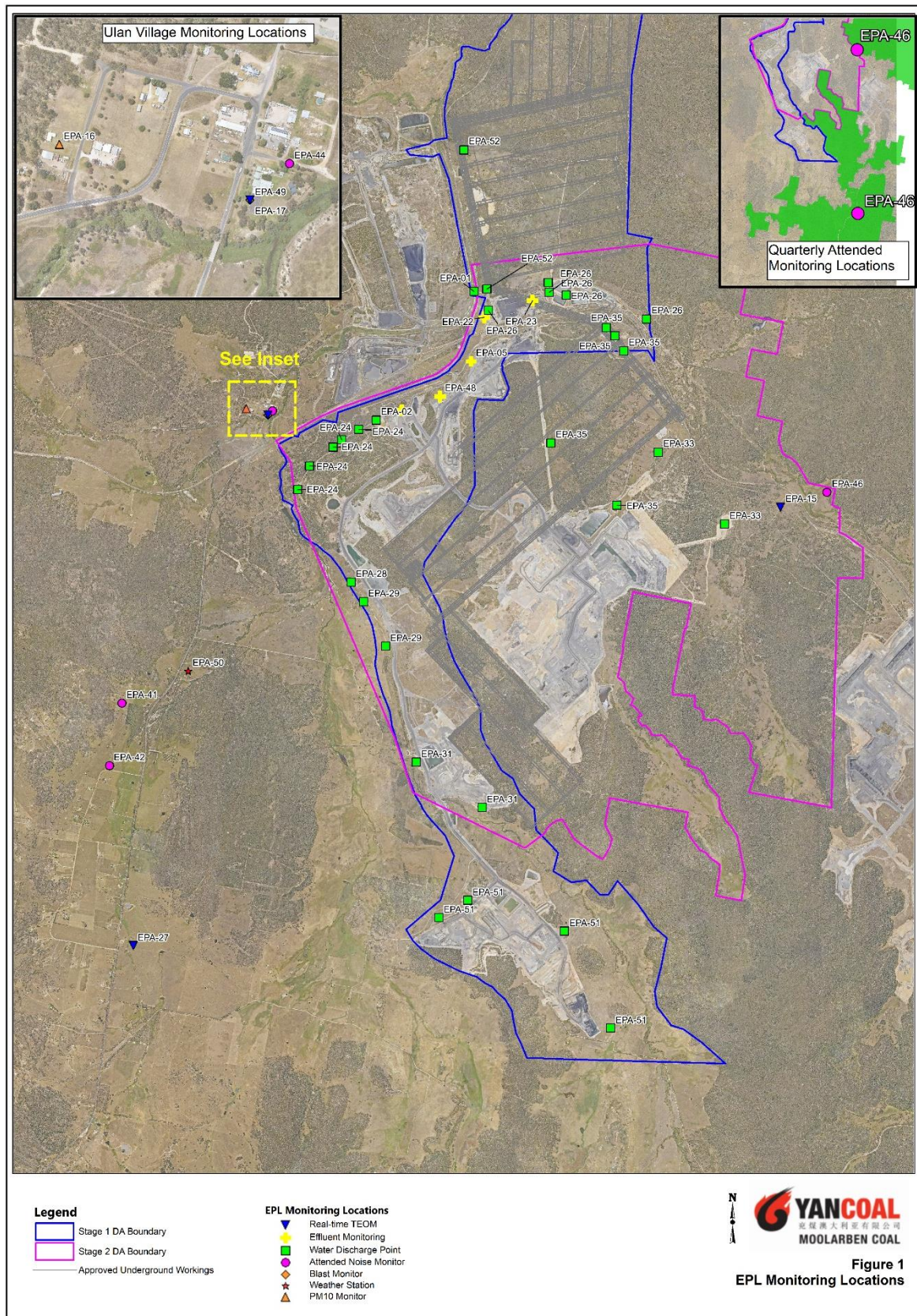


Monthly Environmental Monitoring Report

For the Month Ending 31 May 2025

Name of Operation	Moolarben Coal Complex
Name of License Holder	Moolarben Coal Operations Pty Ltd
Premises	Moolarben Coal Mine 12 Ulan-Wollar Rd, Ulan NSW 2850
Environmental Protection Licence Number	12932
EPL Link	https://apps.epa.nsw.gov.au/prpoeoapp/ViewPOEOLicence.aspx?DOCID=270376&SYSUID=1&LICID=12932
Reporting Period	01 May 2025 to 31 May 2025
Date last sampled data obtained	13 June 2025
Publication Date	26 June 2025
Version	1
Author	N.Potgieter
Approver	R.Shanks

EPL 12932 MCO Environmental Monitoring Network



Concentration Monitoring Summary

Air Quality Monitoring

EPL ID	Location	Pollutant	Unit of Measure	EPL Monitoring Frequency	No. of Samples collected and analysed annually	12 Month Rolling Average			Annual concentration limit	Exceedance (Yes/No)
						Min Value	Mean Value	Max Value		
16	PM01	PM10	µg/m ³	Every 6 days	25	11.8	11.9	11.9	25	No
N/A	PM02	PM10	µg/m ³	N/A	25	12.6	12.8	12.9	25	No
15	TEOM 6	PM10	µg/m ³	Continuous	100%	17.7	18.0	18.1	N/A	N/A
17	TEOM 1	PM10	µg/m ³	Continuous	99.3%	15.8	16.0	16.0	25	No
27	TEOM 7	PM10	µg/m ³	Continuous	93.4%	7.9	8.0	8.1	25	No
27	TEOM 7	PM2.5	µg/m ³	Continuous	93.4%	3.3	3.4	3.4	8	No
N/A	TEOM 4	PM10	µg/m ³	N/A	99.3%	13.2	13.3	13.3	25	No

EPL ID	Location	Pollutant	Unit of Measure	EPL Monitoring Frequency	No. of Samples collected and analysed	Min Value	Mean Value	Max Value	24 hr concentration limit	Exceedance (Yes/No)
16	PM01	PM10	µg/m ³	Every 6 days	5	5.5	8.3	11.7	50	No
N/A	PM02	PM10	µg/m ³	N/A	5	5.5	8.2	14.8	50	No
15	TEOM 6	PM10	µg/m ³	Continuous (24 Hr Average)	100%	5.5	13.7	28.3	N/A	N/A
17	TEOM 1	PM10	µg/m ³	Continuous (24 Hr Average)	100%	6.4	14.1	20.6	50	No
27	TEOM 7	PM10	µg/m ³	Continuous (24 Hr Average)	100%	1.7	6.4	12.4	50	No
27	TEOM 7	PM2.5	µg/m ³	Continuous (24 Hr Average)	100%	0.9	3.3	11.3	25	No
N/A	TEOM 4	PM10	µg/m ³	N/A (24 Hr Average)	100%	5.0	10.0	15.7	50	No

Surface Water Quality Monitoring

EPL ID	Location	Pollutant	Unit of Measure	No. of Samples collected and analysed	Date Sampled	Results
N/A	SW01	Conductivity	µS/cm	1	08/05/2025	646
		pH	pH	1	08/05/2025	8.3
		Total Suspended Solids	mg/L	1	08/05/2025	<5
N/A	SW02	Conductivity	µS/cm	1	08/05/2025	651
		pH	pH	1	08/05/2025	8.5
		Total Suspended Solids	mg/L	1	08/05/2025	<5
N/A	SW04	Conductivity	µS/cm	0	08/05/2025	*
		pH	pH	0	08/05/2025	*
		Total Suspended Solids	mg/L	0	08/05/2025	*
N/A	SW05	Conductivity	µS/cm	1	08/05/2025	572
		pH	pH	1	08/05/2025	7.3
		Total Suspended Solids	mg/L	1	08/05/2025	<5
N/A	SW07	Conductivity	µS/cm	0	08/05/2025	*
		pH	pH	0	08/05/2025	*
		Total Suspended Solids	mg/L	0	08/05/2025	*
N/A	SW08	Conductivity	µS/cm	1	08/05/2025	1764
		pH	pH	1	08/05/2025	6.1
		Total Suspended Solids	mg/L	1	08/05/2025	8
N/A	SW09	Conductivity	µS/cm	1	08/05/2025	2453
		pH	pH	1	08/05/2025	6.8
		Total Suspended Solids	mg/L	1	08/05/2025	20
N/A	SW12	Conductivity	µS/cm	1	08/05/2025	361
		pH	pH	1	08/05/2025	7.2
		Total Suspended Solids	mg/L	1	08/05/2025	6
N/A	SW15	Conductivity	µS/cm	0	08/05/2025	*
		pH	pH	0	08/05/2025	*
		Total Suspended Solids	mg/L	0	08/05/2025	*
N/A	SW16	Conductivity	µS/cm	0	08/05/2025	*
		pH	pH	0	08/05/2025	*
		Total Suspended Solids	mg/L	0	08/05/2025	*

MONTHLY ENVIRONMENTAL MONITORING REPORT

For the Month Ending 31 May 2025

EPL ID	Location	Pollutant	Unit of Measure	No. of Samples collected and analysed	Date Sampled	Results
N/A	SW17	Conductivity	µS/cm	0	08/05/2025	*
		pH	pH	0	08/05/2025	*
		Total Suspended Solids	mg/L	0	08/05/2025	*
N/A	SW18	Conductivity	µS/cm	0	08/05/2025	*
		pH	pH	0	08/05/2025	*
		Total Suspended Solids	mg/L	0	08/05/2025	*
N/A	SW22	Conductivity	µS/cm	1	08/05/2025	670
		pH	pH	1	08/05/2025	8.2
		Total Suspended Solids	mg/L	1	08/05/2025	<5
N/A	SW23	Conductivity	µS/cm	0	08/05/2025	*
		pH	pH	0	08/05/2025	*
		Total Suspended Solids	mg/L	0	08/05/2025	*
N/A	SW24	Conductivity	µS/cm	0	08/05/2025	*
		pH	pH	0	08/05/2025	*
		Total Suspended Solids	mg/L	0	08/05/2025	*

* No flow

Blasting

	Location	Pollutant	Unit of Measure	Frequency	No. of Blasts during the reporting period	Results			Limits dBL	Exceedance (Yes/No)
						Min Value	Mean Value	Max Value		
49	BM1 Ulan School	Blast Overpressure	dBL	Every Blast	15	82.7	97.2	109.8	115 (95% of Blasts) 120 (100% of Blasts)	No
		Ground Vibration	mm/s	Every Blast		0.09	0.28	1.11	5mm/s (95% of Blasts) 10mm/s (100% of Blasts)	No
N/A	BM5 Ridge Rd	Blast Overpressure	dBL	Every Blast	15	88.0	99.3	116.0	115 (95% of Blasts) 120 (100% of Blasts)	No
		Ground Vibration	mm/s	Every Blast		0.06	0.19	0.75	5mm/s (95% of Blasts) 10mm/s (100% of Blasts)	No
N/A	BM8 Moolarben Rd	Blast Overpressure	dBL	Every Blast	15	86.1	95.3	103.9	115 (95% of Blasts) 120 (100% of Blasts)	No
		Ground Vibration	mm/s	Every Blast		0.03	0.19	0.42	5mm/s (95% of Blasts) 10mm/s (100% of Blasts)	No

MONTHLY ENVIRONMENTAL MONITORING REPORT

For the Month Ending 31 May 2025

Noise

EPL ID	Location	Site ID	Monitoring Type	Frequency	Measured Level ^{3,4,5} LAeq dB (15min)	Measured Level ^{3,4,5} LA1,1dB (1min)	Noise Criteria ¹	Monitoring Completed during the period	Exceedance (Yes/No) ¹
44	Ulan Public School	NA1	Compliance - Attended	Monthly	34	-	Daytime (07:00 – 18:00) LAeq, 15minute: 35 dB	Yes	N/A ²
N/A	Cope Road (Receiver 258)	NA11	Management - Attended	Quarterly	32	37	-	Yes	No
N/A	Lagoons Road	NA2	Validation - Attended	Annually	-	-	-	-	-
42	Winchester Crescent	NA12	Compliance/Validation - Attended	Monthly	30	33	Night time (22:00 – 07:00) LAeq,15minute: 35 dB LA1,1minute: 45 dB	Yes	No
N/A	Upper Ridge Road (Receiver 176)	NA3	Validation - Attended	Annually	-	-	-	-	-
41	Lower Ridge Road	NA6	Compliance -Attended	Monthly	31	35	Night time (22:00 – 07:00) LAeq,15minute: 37 dB LA1, 1minute: 45 dB	Yes	No
N/A	Moolarben Road (Receiver 28)	NA10	Validation - Attended	Annually	-	-	-	-	-
46	Goulburn River National Park	GRNP	Compliance -Attended	Annually	-	-	All periods LAeq, 15minute: 50 dB	-	-
46	Munghorn Gap Nature Reserve	MGNR	Compliance -Attended	Annually	-	-	All periods LAeq, 15minute: 50 dB	-	-

- Noise limits are adjusted by +5 dB during 'very noise-enhancing meteorological conditions' in accordance with the NPfl.
- Ulan School was in recess and not in use, therefore noise limits were not applicable in accordance with the consents.
- Site-only LAeq,15minute, includes modifying factor penalties, if applicable
- Site-only LA1,1minute based on measured site-only LAmax
- Where site-only noise levels are very low or are masked by other sources and are at least 5 dB lower than relevant limits, then a maximum estimate maybe be provided such as "<20 dB".

Effluent Discharge Points

EPL ID	Pollutant	Unit of Measure	No. of samples required by Licence	No. of Samples collected and analysed	Date Sampled	Result
5	BOD	mg/L	Quarterly	1	14/05/2025	26
	Nitrogen (total)	mg/L	Quarterly	1	14/05/2025	67.5
	Oil and Grease	mg/L	Quarterly	1	14/05/2025	<5
	pH	pH	Quarterly	1	14/05/2025	7.6
	Phosphorus (total)	mg/L	Quarterly	1	14/05/2025	9.1
	Total Suspended Solids	mg/L	Quarterly	1	14/05/2025	29
22	BOD	mg/L	Quarterly	1	14/05/2025	2
	Nitrogen (total)	mg/L	Quarterly	1	14/05/2025	30.9
	Oil and Grease	mg/L	Quarterly	1	14/05/2025	<5
	pH	pH	Quarterly	1	14/05/2025	7.4
	Phosphorus (total)	mg/L	Quarterly	1	14/05/2025	18.4
	Total Suspended Solids	mg/L	Quarterly	1	14/05/2025	4
23	BOD	mg/L	Quarterly	1	14/05/2025	23
	Nitrogen (total)	mg/L	Quarterly	1	14/05/2025	4.8
	Oil and Grease	mg/L	Quarterly	1	14/05/2025	<5
	pH	pH	Quarterly	1	14/05/2025	7.0
	Phosphorus (total)	mg/L	Quarterly	1	14/05/2025	1.3
	Total Suspended Solids	mg/L	Quarterly	1	14/05/2025	24
48	BOD	mg/L	Quarterly	1	15/05/2025	59
	Nitrogen (total)	mg/L	Quarterly	1	15/05/2025	15.2
	Oil and Grease	mg/L	Quarterly	1	15/05/2025	<5
	pH	pH	Quarterly	1	15/05/2025	6.9
	Phosphorus (total)	mg/L	Quarterly	1	15/05/2025	1.52
	Total Suspended Solids	mg/L	Quarterly	1	15/05/2025	21

Discharge Points

EPL ID	Pollutant	Unit of Measure	No. of samples required by Licence	No. of Samples collected and analysed	Min Value	Mean Value	Max Value	100%ile concentration limit	Exceedance (Yes/No)
1	Conductivity	µS/cm	Continuous during discharge	Continuous during discharge	83	206	298	619	No
	Oil and Grease	mg/L	Weekly during discharge	4	<5	<5	<5	10	No
	pH	pH	Continuous during discharge	Continuous during discharge	6.7	7.3	7.8	6.5-8.5	No
	Total Suspended Solids	mg/L	Weekly during discharge	4	<1	<1	<1	50	No
	Turbidity	NTU	Continuous during discharge	Continuous during discharge	0	0	1	25	No
	Discharge Volume	Megalitres per day	Continuous during discharge	Continuous during discharge	1.3	4.2	7.9	20 ¹	No
2	Conductivity	µS/cm	Continuous during discharge	No licensed discharges during the period				619	NA
	Oil and Grease	mg/L	Daily during discharge					10	NA
	pH	pH	Continuous during discharge					6.5-8.5	NA
	Total Suspended Solids	mg/L	Daily during discharge					50	NA
	Turbidity	NTU	Continuous during discharge					25	NA
	Discharge Volume	Megalitres per day	Continuous during discharge					NA	NA
24	pH	pH	Daily during discharge	No licensed discharges during the period				6.5-8.5	NA
	Total Suspended Solids	mg/L	Daily during discharge					50	NA
	Turbidity	NTU	Daily during discharge					25	NA
26	pH	pH	Daily during discharge	No licensed discharges during the period				6.5-8.5	NA
	Total Suspended Solids	mg/L	Daily during discharge					50	NA
	Turbidity	NTU	Daily during discharge					25	NA
28	Conductivity	µS/cm	Continuous during discharge	No licensed discharges during the period				619	NA
	Oil and Grease	mg/L	Daily during discharge					10	NA
	pH	pH	Continuous during discharge					6.5-8.5	NA
	Total Suspended Solids	mg/L	Daily during discharge					50	NA
	Turbidity	NTU	Continuous during discharge					25	NA

MONTHLY ENVIRONMENTAL MONITORING REPORT

For the Month Ending 31 May 2025

EPL ID	Pollutant	Unit of Measure	No. of samples required by Licence	No. of Samples collected and analysed	Min Value	Mean Value	Max Value	100%ile concentration limit	Exceedance (Yes/No)
	Discharge Volume	Kilolitres per day	Continuous during discharge					NA	NA
29	pH	pH	Daily during discharge	No licensed discharges during the period				6.5-8.5	NA
	Total Suspended Solids	mg/L	Daily during discharge					50	NA
	Turbidity	NTU	Daily during discharge					25	NA
31	pH	pH	Daily during discharge	No licensed discharges during the period				6.5-8.5	NA
	Total Suspended Solids	mg/L	Daily during discharge					50	NA
	Turbidity	NTU	Daily during discharge					25	NA
35	pH	pH	Daily during discharge	No licensed discharges during the period				6.5-8.5	NA
	Total Suspended Solids	mg/L	Daily during discharge					50	NA
	Turbidity	NTU	Daily during discharge					25	NA
51	pH	pH	Daily during discharge	No licensed discharges during the period				6.5-8.5	NA
	Total Suspended Solids	mg/L	Daily during discharge					50	NA
	Turbidity	NTU	Daily during discharge					25	NA

1 Only applies when mining operations at the premises include that undertaken in the areas "UG4".