



Community Consultative Committee Meeting 73

AGENDA

Date: Wednesday 11 June 2025

Time: 2:00 pm

Location: Moolarben Coal Complex Open Cut Main Board Room

Meeting agenda

1. Welcome and Acknowledgement of Country
2. Apologies
3. Declarations
4. Business arising from previous minutes
5. Correspondence report (to be sent prior to the meeting)
6. CCC update
 - Including questions on notice received
7. General business
8. Next meeting.

Community Consultative Committee Meeting 73

AGENDA

Date: Wednesday 11 June 2025

Time: 2:00 pm

Location: Moolarben Coal Complex Open Cut Main Board Room

Meeting Agenda:

1. Welcome and Acknowledgement of Country
2. Apologies
3. Declarations
4. Business arising from previous minutes
5. Correspondence report (to be sent prior to the meeting)
6. CCC update
 - Including questions on notice received
7. General business
8. Next meeting

**MOOLARBEN COAL OPERATIONS - COMMUNITY CONSULTATIVE COMMITTEE
MEETING No. 73**

Date: Wednesday 11 June 2025
Time: 2:00 pm
Location: Moolarben Coal Open Cut Administration Board Room, Ulan
Attendance: Independent Chairperson
Deborah Palmer (DP)

Community Members

Dr Julia Imrie (JI)
Bev Smiles (BS)
Aleisha Lonsdale (AL)

Moolarben Coal Operations

Ian Flood (IF)
Rebecca Shanks (RS)
Morgan Yeatman (MY) {Minute taker}

Apologies

Brian Wesley (BW)
Mayor MWRC - Cr Des Kennedy (DK)
MWRC Delegate - Cr Katie Dicker (KD)
David Stokes (DS)
Helen Ungaro (HU)

Meeting 73 Agenda and Presentation were provided to all meeting attendees.

1. Introduction and welcome

Deborah Palmer (DP) provided an Acknowledgement of Country and paid respect to Aboriginal leaders, past, present, and emerging, opened the meeting and welcomed all attendees to the Moolarben Coal Operations (MCO) Community Consultative Committee (CCC).

2. Apologies

- MWRC Delegate - Cr Katie Dicker (KD)
- David Stokes (DS)
- Helen Ungaro (HU)
- Brian Wesley (BW)
- Mayor MWRC - Cr Des Kennedy (DK)

3. Declarations

- DP declared her role as an Independent Chairperson, appointed by DPHI and engaged by MCO.

4. Business arising from previous minutes

- DP confirmed previous meeting minutes finalised and distributed on 30 May 2025.

Actions from Meeting 72:

1. MCO to investigate perceived surface water flow loss of Goulburn River between SW02 and SW22.
2. MCO to investigate the rise in pH of the Goulburn River system.
3. Provide current hectares of rehabilitated land versus disturbed land.
4. Include in the meeting minutes information regarding the removal of biodiversity credits from area in UG4.
5. Provide UG4 pre-mining ecology monitoring report link including noting the section regarding drought affected vegetation.

Items 1, 2, 3 & 4 addressed in the presentation. Closed.

Item 5 addressed in meeting #72 minutes general business. Closed.

5. Correspondence since last meeting

- 18 March – email from the Chairperson to members - notification from ACREZ as FYI
- 25 March – email from the Chairperson to members – draft March minutes for comment by 1 April
- 30 March – email from JI to Chairperson – comments on the draft March minutes
- 4 April – email from Chairperson to JI – how comments have been addressed in the March minutes
- 4 April – email from Chairperson to members – final March minutes
- 4 April – email from JI to Chairperson – mistake in the minutes
- 4 April – email from Chairperson to members – corrected minutes
- 16 April – email from the Chairperson to members Information from MCO - temporary Road closures
- 28 April – email from the Chairperson to members - Information from MCO - Annual Report approved and on the MCO website
- 28 April – email from JI to the Chairperson requesting a copy of the Annual Report.
- 28 April email from the Chairperson to IF and RS requesting a copy of the Annual Report for JI to be

delivered to address

- 28 April – email from RS confirming copy will be provided to JI
- 9 May – email from Chairperson to members – reschedule September meeting from 9 September to 16 September
- 12 May – email from the Chairperson to members - Community newsletter from Yancoal
- 15 May – email from the Chairperson to members – draft June agenda and call for QON by 28 May
- 28 May – email from JI to the Chairperson and members - QON
- 30 May – final agenda and previous minutes

6. CCC Update Presentation

6.1 2025 Community Support Program

- An update on the 2025 Community Support Program (CSP) and Community Events for the quarter was provided.

6.2 MWRC economic profile

- MWRC stats on mining industry economic contributions to the Mid-Western Council area summarized. This information was presented in the May 2025 MWRC economic forum.

6.3 Open-cut operations

- Operational update
 - Operations continue in OC1, OC2 (rehab activities only), OC3, and OC4 areas.
 - Water treatment plant (WTP) operations continue.
 - Closure of Ulan-Wollar Road will be required for ongoing blasting activities in OC4. Notifications will be provided to those registered for MCO's blast notifications.

Discussion:

- A question was raised regarding the timing of road closures. It was noted that while one closure has already taken place, additional road closures are forecast to commence in 2026 and will continue for the duration of mining within the OC4 area.
- Clarification was sought on the current location of mining activities within OC4. It was confirmed that mining is approximately halfway through the designated disturbance area footprint. The CCC discussed the current level of the product coal stockpiles noting it is currently high based on rail and port constraints due to flooding along the coast.

6.4 Underground operations

- Longwall mining currently in LW406.
- Underground development continues in UG4, with development progressing towards UG2.
- The UG4 Extraction Plan for LW409-414 is still with DPHI for approval.
- Commenced preparation of UG2 Extraction Plan.

Discussion:

- In response to an email query from JI, it was advised that the average groundwater inflow from the underground operations between February and April was approximately 9.8 ML/day.
- A question was raised regarding the required groundwater trigger values applying to UG4 monitoring and whether the installation of required groundwater monitoring bores, including PZ-A, had been completed. It was explained that approvals from Crown Lands and the MLALC had taken longer than anticipated, but the final stages are now underway, with installation expected to occur shortly.

The CCC discussed what communications MCO have received regarding the LW409-414 Extraction Plan (EP). It was noted MCO had submitted the EP and responded to 3 requests for information (RFI) from the independent panel. The EP is with DPHI for consideration.

6.5

Exploration

- Drilling activities are planned to continue in ML1715 and ML1605 and continuing in EL6288 and EL7073.
- Rehabilitation and monitoring activities are ongoing in exploration areas.

Discussion:

- The CCC discussed the number of drilling sites. It was noted the EL6288 program has finished its approved sites and the ML1605 program was underway. An Assessable Prospecting Operations (APO) application is currently being prepared for further drilling in EL6288 North. MCO confirmed the figure on slide 6 shows both currently approved holes under an APO / Forward Program as well as proposed holes.
- BS asked what disturbance occurred to prepare the pads. IF confirmed only slashing occurs in grass paddocks with no need to strip topsoil. Members of the CCC raised concerns about the clearing of trees in vegetated areas and the cumulative level of clearing from the total number of drill sites. MCO noted that this is what the APO approval process assess.
- **ACTION:** Confirm if APO information is publicly available and provide a link in the minutes. <https://www.resources.nsw.gov.au/resources-regulator/exploration/exploration-activity-approvals>
- **ACTION:** Confirm ha's of vegetation in EL7073 is being cleared.

6.6

Environmental monitoring

- Licensed water discharge – EPA01 – all results are within compliance levels.
- Stream flow in the Goulburn River showing responses to rainfall.
- An update on water quality was also provided (slides 12-14).

Discussion:

- A question was raised about the gaps in the discharge data. It was explained that discharges from the water treatment plant are managed based on operational requirements and occur only when water volumes exceed the site's water balance needs. The committee inquired how water usage within the site water balance is measured. It was noted that where possible, water transfers are metered, and the remaining usage is estimated through the site's water balance model. A question was asked regarding current water storage levels onsite. It was confirmed that storage levels are in a favourable position at present, and the treatment plant is not discharging at full capacity due to this.
- **Action Item #1 from previous meeting:** MCO confirmed Goulburn River level rating curves which depict flow can be sensitive to water level height which can be affected by many things including sediment deposition and build up of vegetation. A MCO technical specialist has stated in their report that this can be impacted by environmental factors and is not an actual loss of flow.

Discussion:

The Committee discussed concerns that due to the sandy nature of the riverbed any high flow can affect the rating curve making it an inaccurate measure for understanding of baseflow loss in the river. MCO noted the monitoring points are what was required by the Regulators and the data is presented in the CCC as requested.

ACTION: Compare UCML Goulburn River flow to MCO data.

ACTION: Adjust scale on the Goulburn River flow graphs to better visualise the data.

- JI requested that the minutes reflect their concern raised about the location of the SW22 monitoring point. It was noted that an alternative location on private land had previously been suggested to MCO as potentially more suitable, but this location was not considered during the approval or Environmental Planning process. In response, MCO noted the current monitoring location was selected and confirmed by technical experts as part of the approval process
- **Action item #2 from previous minutes:** MCO noted baseline historical pH data shows since 2009, when SW12 was installed, there have been consistently lower pH results at SW12 than downstream. The average SW12-SW02 difference was approximately 0.56 pH units

since 2009. MCO hasn't triggered as per the SWMP for pH since 2020 along the Goulburn River.

6.7 Air Quality, Blasting, Noise Monitoring, and Community Complaints

- Air quality monitoring results for PM10 and PM2.5 are within criteria limits, as published in monthly monitoring reports.
- Blasting results during the period were consistent and compliant.
- Noise monitoring indicates compliance with all criteria, with ongoing implementation of planning, engineering, and operational controls.
- 2 complaints from 2 complainants between February and May 2025.

Discussion:

- A question was raised on slide 18 Community Complaints about the nature of the items listed under the 'other' complaints category. It was clarified that this category included one water-related complaint and one complaint regarding vegetation dieback. It was also noted that the water-related complaint concerned turbid water colour in the Goulburn River following a rainfall event.

6.8 Rehabilitation

- Landform shaping and drainage works continuing in OC2, OC3 and OC4.
- Ongoing rehabilitation maintenance includes erosion control and weed management in OC2 and OC4.
- Landform shaping progress images presented for OC2, OC3 and OC4.

Discussion:

- MCO confirmed the rehabilitation areas by pointing to site wide maps and noting on slide 21 shaping against highwalls will be part of the rehab process.

6.9 Biodiversity offset areas update

- Offset maintenance works including track maintenance, erosion repairs, vertebrate pest control and weed management programs underway.
- 2025 offset tree planting program in progress with approx. 35,000 stems planted in the Bobadeen, Moolarmoo and Onsite Offsets.
- Combined DPHI/DCCEW offset review completed in May 2025 with positive feedback.

Discussion:

- JI noted increased pig activity in the area and their property. It was noted that MCO is currently investigating options for control, including trapping and baiting.
- An update was provided on tree planting activities. The species planted were identified as box gum woodland, with an expected survival rate of approximately 51%. Monitoring is ongoing, and infill planting or thinning will be undertaken as needed to support establishment and long-term success.

6.10 MCC Biodiversity Offsets

- Presentation on EPBC Approvals with associated map. **Action item #4 from previous meeting:** The area in question was removed from the 2007/3297 and transferred into the 2017/7974 EPBC.

6.11 Biodiversity Offset Area Variations

- Area 2 in UG4 did not meet credit requirements and so was moved to different EPBC.

6.12 OC3 Extension – amended project

- MCO has lodged a consolidated response to all advice received from Agencies and the

Independent Expert Advisory Panel for Mining (IEAPM) in November 2024.

- MCO is providing clarifying information Independent Expert Advisory Panel for Mining assessment report. Currently working on requests regarding Groundwater Dependent Ecosystems (GDEs), potential avoidance areas and groundwater.

6.13 NSW EnergyCo Transmission project

- Presentation on information on the NSW EnergyCo transmission infrastructure modification.
- Indicated timing for works: Intersection upgrades in July 2025.

6.14 Saddlers Creek Road intersection

- MCO is required to upgrade the intersection of Ulan Road at Saddlers Creek Road. Design submitted to MWRC. Due diligence assessments to support the design have commenced.
- MCO noted traffic movements at the intersection on the design images.

Discussion:

- JI commented that Saddlers Creek Road was in poor condition due to mine related truck movements over the past 2 years. In response, it was advised that road maintenance was being discussed as part of the Mid-Western Regional Council (MWRC) process. JI Commended that Saddlers Creek Road was not a maintained MWSC road.

6.15 Employment update

- 26 Trainees onsite
- 32 Apprentices onsite

7. Annual Review 2024

7.1 Activities during the reporting period

- Presentation on mining, exploration and infrastructure activities during the period (see slide 32)

7.2 Noise, Blasting and Air Quality

- Presentation on noise, blasting and air quality monitoring during the period.

7.3 Water

- Presentation on surface water, stream health and channel stability monitoring during the period.

Discussion

- JI noted concerns about the consistency and accuracy of the reporting and commentary in the Annual Report between years and between neighbouring mines (for example site water balance)
- It was noted rainfall comments in the Annual Review were not accurate to actual rainfall received in the area and noted other errors. It was noted MCO will review the queries raised and would resubmit the report with any required changes. The Committee discussed how long it would take for a new version to be available. MCO noted the internal approval process is multilevel and would be required prior to resubmission.
- JI asked why in the groundwater section the PZ105C trigger level did not align to the UG4 LW401-408 extraction plan trigger level. RS replied that a current update to the groundwater management plan (GWMP), including the updated trigger level, had not been approved by the regulator and still had the previous trigger level; the 2024 Annual Review was reported against the currently approved GWMP requirements.
- A question was raised regarding the classification of 'Gleniston' in the Annual Review, which was shown as a commercial receiver. It was noted that other Airbnb properties in the area were not similarly classified. JI noted the property and its buildings should be displayed as

private, consistent with the position outlined in 2023. It was acknowledged that a previous commitment by MCO had been made to amend this. In response, MCO advised any updates to the Annual Review would need to be reflected first in the relevant management plans, which are currently under review in consultation with the Regulator.

ACTION: Include a footnote in the resubmitted 2024 Annual Review update that the 'Gleniston' property and its buildings were incorrectly referred to as commercial property.

7.4 Groundwater

- Presentation on groundwater monitoring for the period included at slide 35.

Discussion:

- A request was made for access to the consultant report associated with the trigger exceedance investigation of PZ213-314. It was advised that the specialist report is not publicly available.

7.5 Subsidence

- Presentation on subsidence monitoring for the period.
- The Committee noted that the subsidence table appeared inconsistent with the associated commentary, with actual movements in some areas exceeding predicted values. A question was also raised about where MCO reports far-field movements associated with current mining activities. In response, MCO advised that data is being collected via GNSS monitors located north of the current mining area; however, these are intended for baseline monitoring to inform future approval processes.

ACTION: Review the Annual Review Subsidence table 29 and amend if required.

- The Committee noted concern about any impact to the Drip and the Goulburn River.

7.6 Rehabilitation

- Presentation on rehabilitation monitoring for the period.

Discussion

- **Action Item #3 from previous minutes:** RS stated the total 2024 disturbance was 2,187 hectares, the 2024 land under active rehabilitation was 421 hectares and the 2024 land being prepared for rehabilitation was 84 hectares.

7.7 Incidents, Compliance and Complaints

- Presentation on Incidents, Compliance and Complaints for the period.

7.8 2024 Community Support Program

- Presentation on the 2024 Community Support Program.
- In 2024 MCO donated just under \$240,000 to the MWRC community.

8. General Business

- JI asked what monitoring was in place that could prove or disprove if minning was having an impact to The Drip and the Goulburn River as required under the conditions of consent. IF replied an extensive monitoring program had been put forward for The Drip, Corner Gorge and Goulburn River as part of the UG4 LW409-414 Extraction Plan process submitted to the Department.

9. Next Meeting: 17th September 2025 at 2:30 pm onsite.

Meeting closed at 3:52 pm with DP thanking members for their attendance and participation.

Action Items:

Item	Action	Responsibility
1	Is APO information publicly available, and if so, can the link be provided in the CCC minutes. What area in EL7073 is being cleared?	MCO
2	Compare UCML Goulburn River flow data to MCO data and adjust the scale on the Goulburn River flow graph.	MCO
3	Include a footnote in the 2024 Annual Review to state the 'Gleniston' property and its buildings is incorrectly referred to as commercial property.	MCO
4	Review the 2024 Annual Review Subsidence section Table 29 and amend if required.	MCO

Community Consultative Committee Update

June 2025

Moolarben Coal Operations

2025 Community Support Program (CSP)

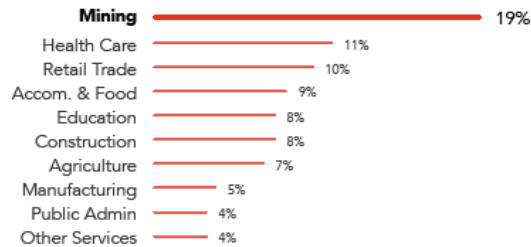
Yancoal-Moolarben Coal CSP Events for the prior quarter included:

- Gulgong Show
- Lifeline Central West - Mudgee Hub
- 'Wings, Wheels and Wine' Air Show & Aviculture Show

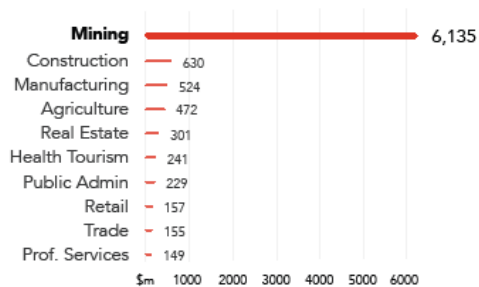


MWRC economic profile

Top 10 Employers by industry



Top 10 Industries economic output (\$M)



Annual Value of Goods & Services Production

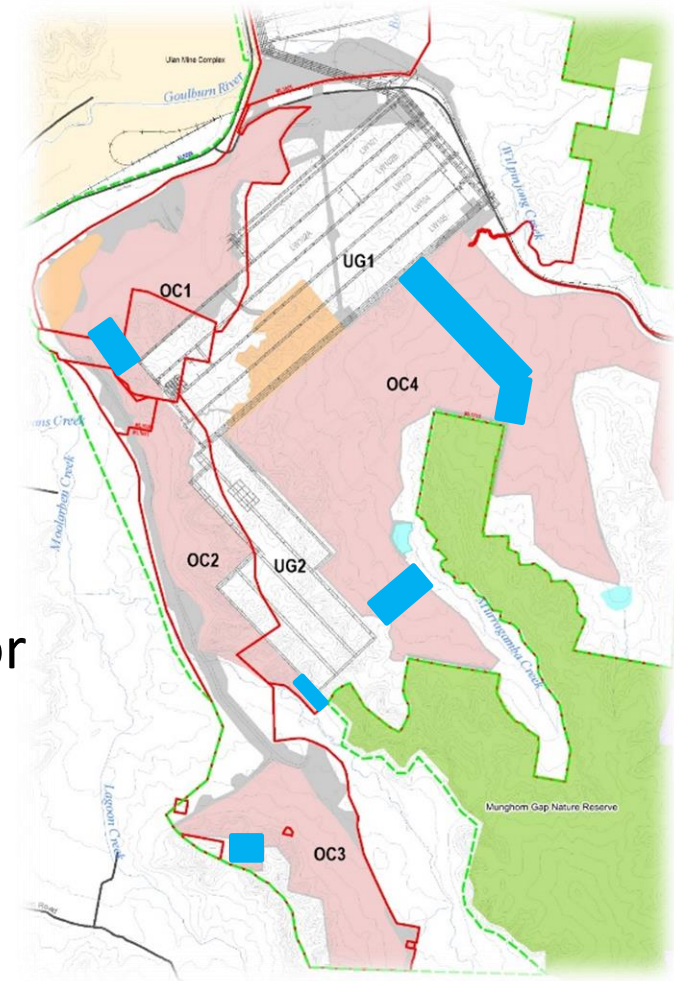


Source: Economic and Business Profile for the Mid-Western Region, May 2025

- Mining industry provided economic output for the region of \$6.135 Billion
- Goods and Services generated by mining industry approx. \$4.5 billion
- Mining's contribution to MWRC in dollar terms is double the contribution of the next 9 industry sectors combined
 - Real estate - \$316 million, agriculture - \$214 million, tourism - \$229 million

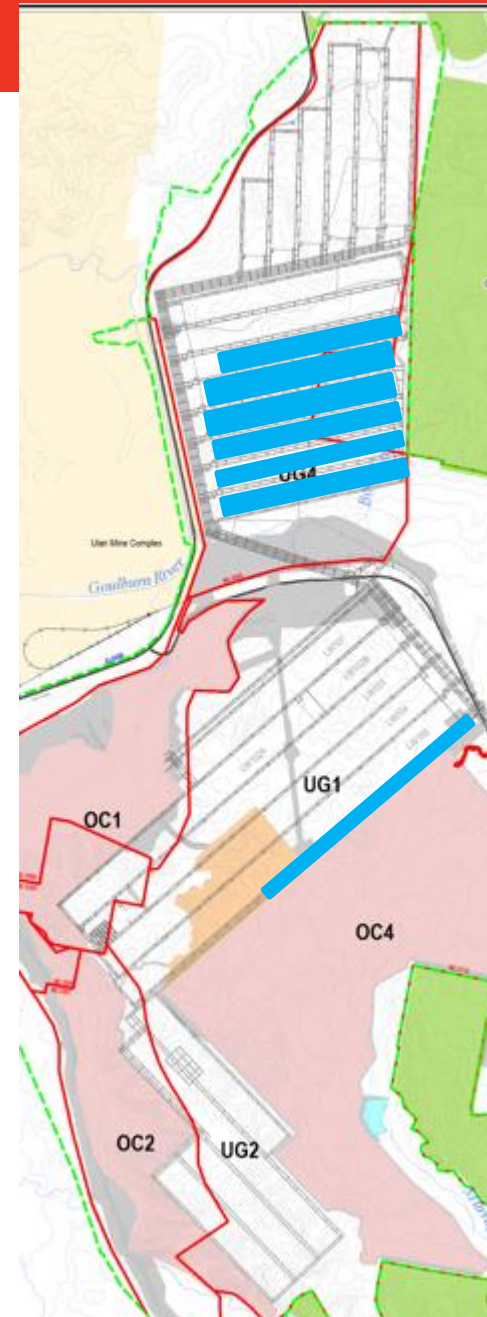
Operational Update - Opencut

- Open cut operations in;
 - OC1
 - OC2
 - OC3
 - OC4
- Water Treatment Plant operations continue.
- Closure of Ulan-Wollar Road will be required for Open Cut 4 ongoing blasting activities.



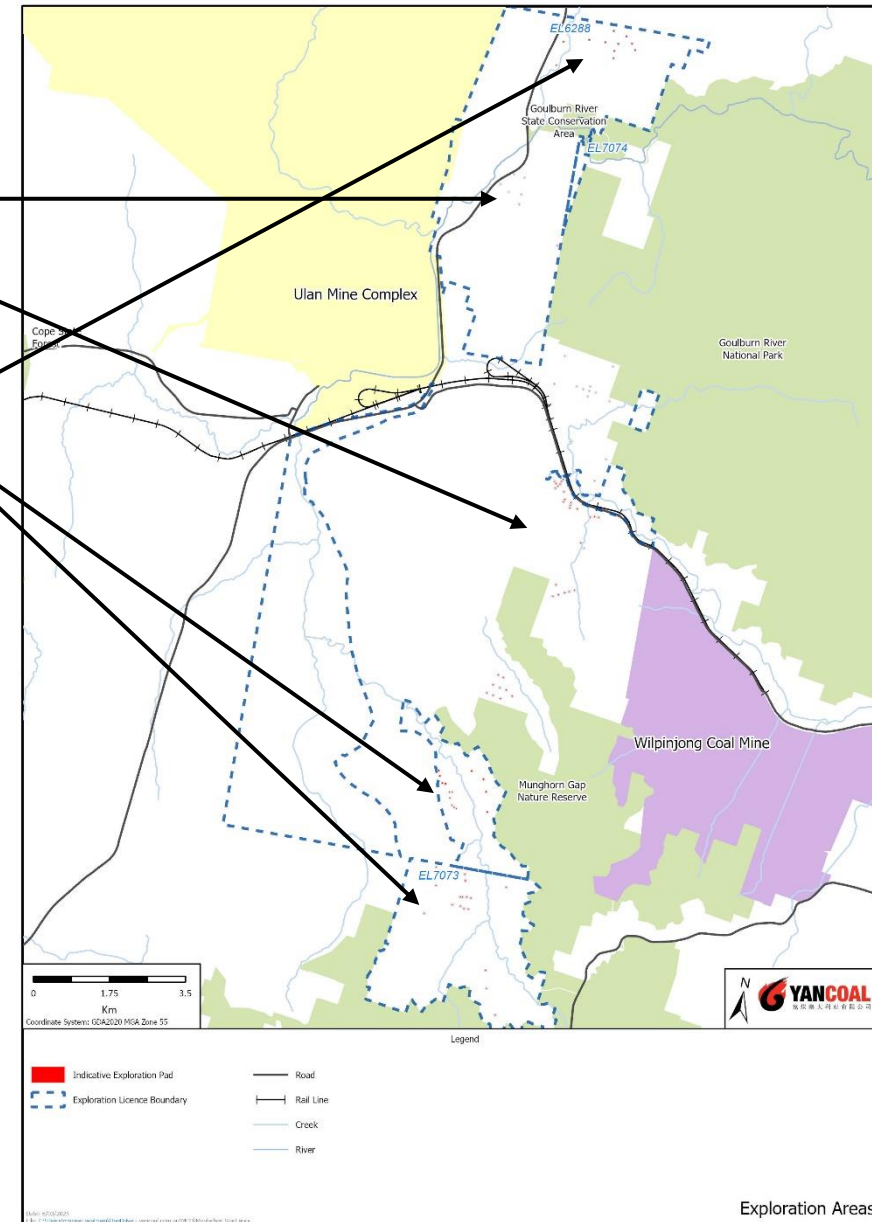
Operational Update - Underground

- Longwall operations in LW406.
- Continued underground development in UG4 and commencement towards UG2.
- UG4 LW409-414 Extraction Plan
 - Extraction Plan with panel for review and advice to DPHI
- MCO has commenced preparation of Extraction Plan for UG2.



Exploration Update

- Drilling continues in ML1715 and ML1605
- Drilling continues in EL6288 and EL7073
- Rehabilitation and monitoring activities have continued during the period.



Environmental Monitoring

Monitoring network

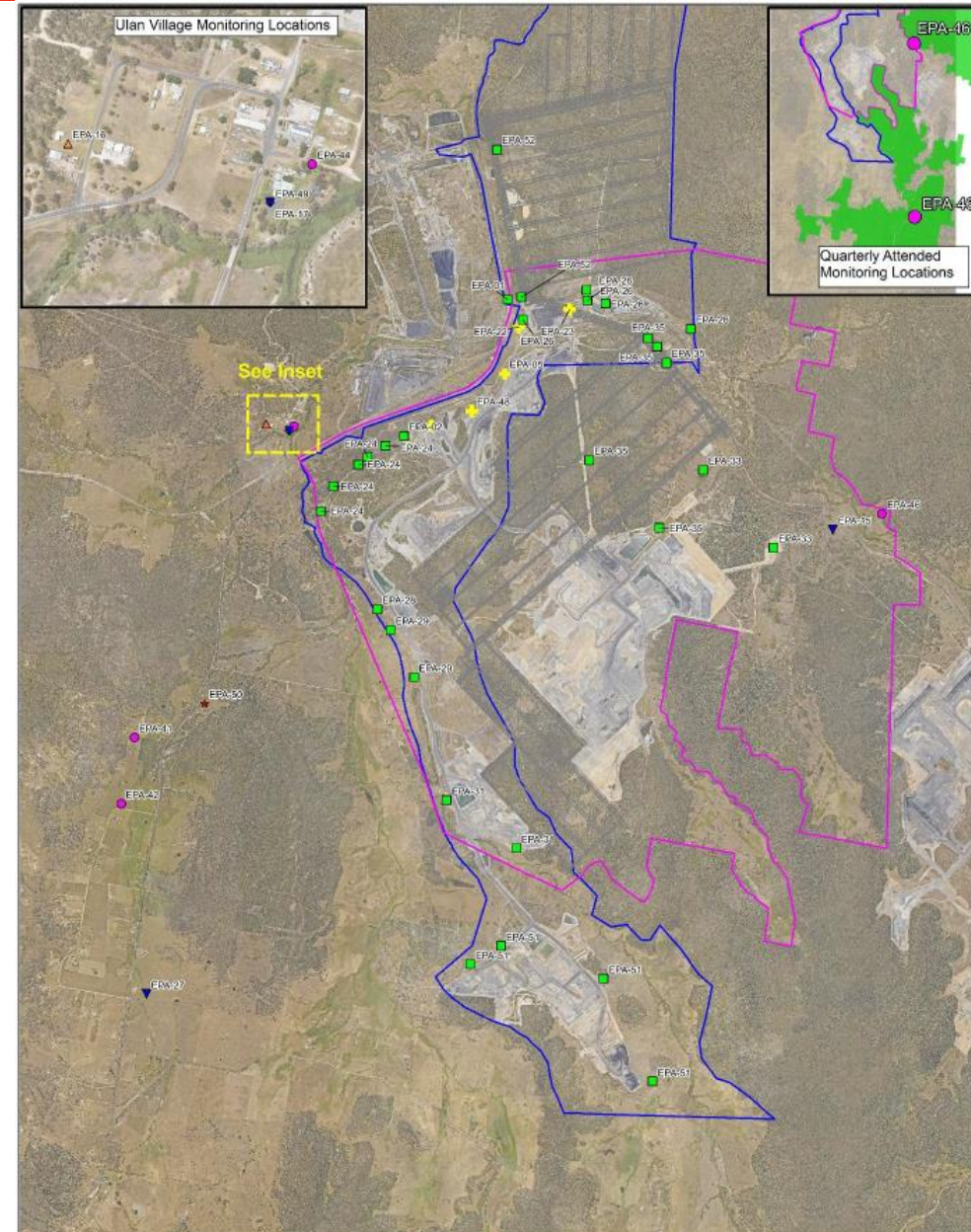
- Water;
- Air Quality;
- Blasting;
- Noise; and
- Meteorology.

Legend

- Stage 1 DA Boundary
- Stage 2 DA Boundary
- Approved Underground Workings
- Approved_Underground_Workings

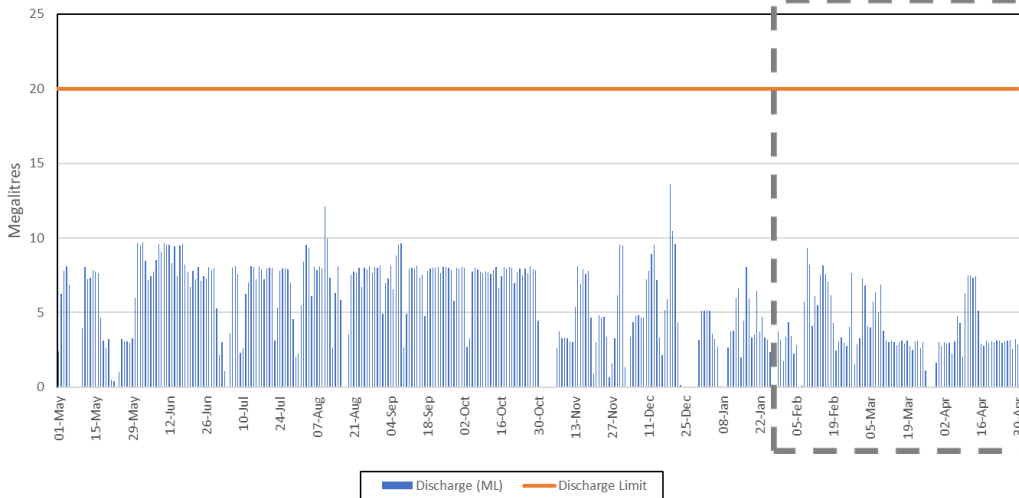
EPL Monitoring Locations

- Real-time TEOM
- Effluent Monitoring
- Water Discharge Point
- Attended Noise Monitor
- Blast Monitor
- Weather Station
- PM10 Monitor

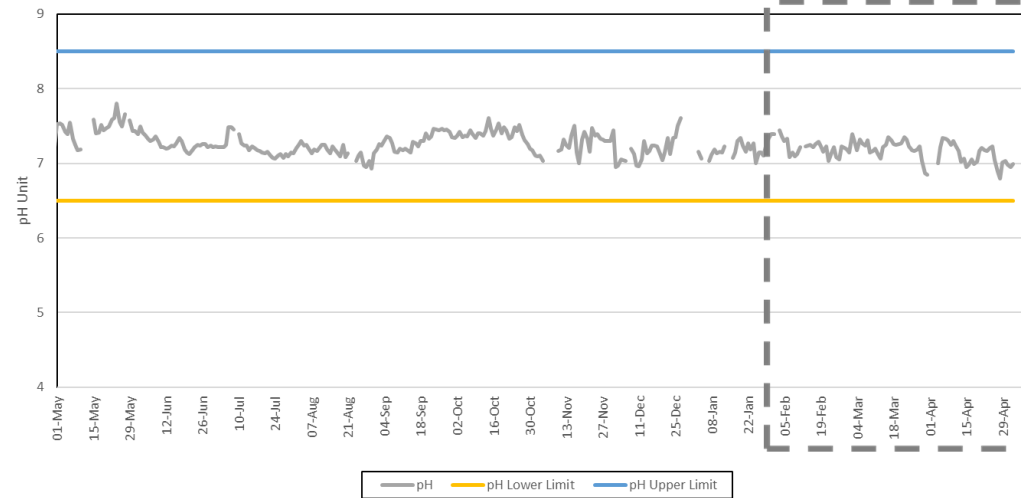


Water Release – EPA01

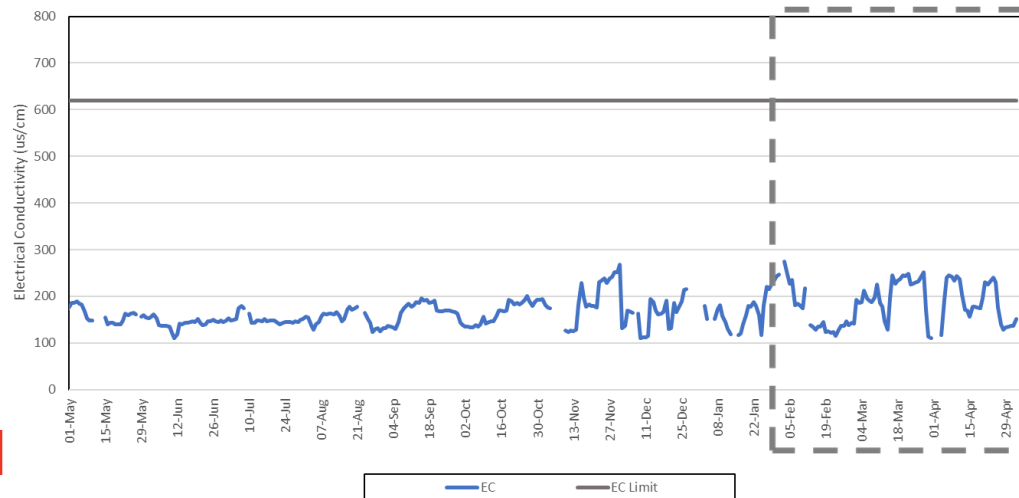
EPA 1 Daily Discharge Volumes
May 2024 - April 2025



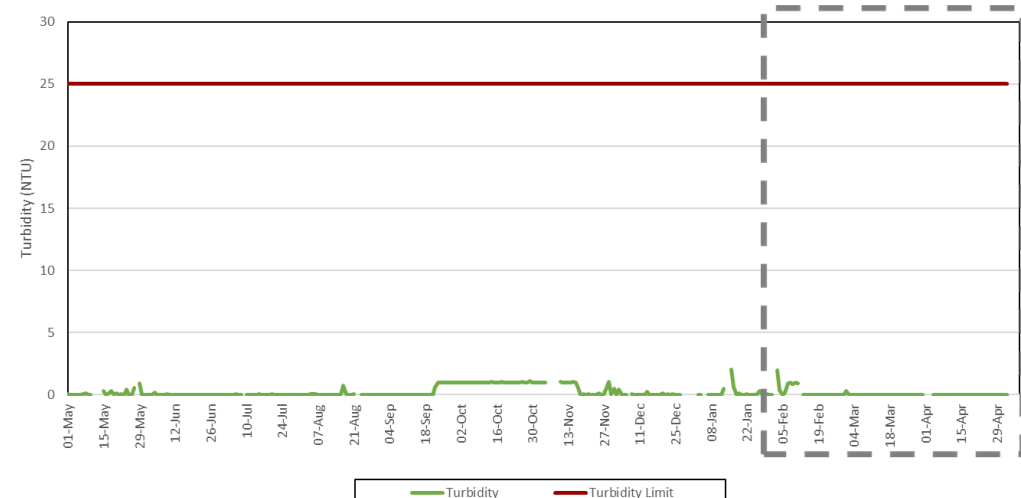
EPA 1 Daily Average pH
May 2024 - April 2025



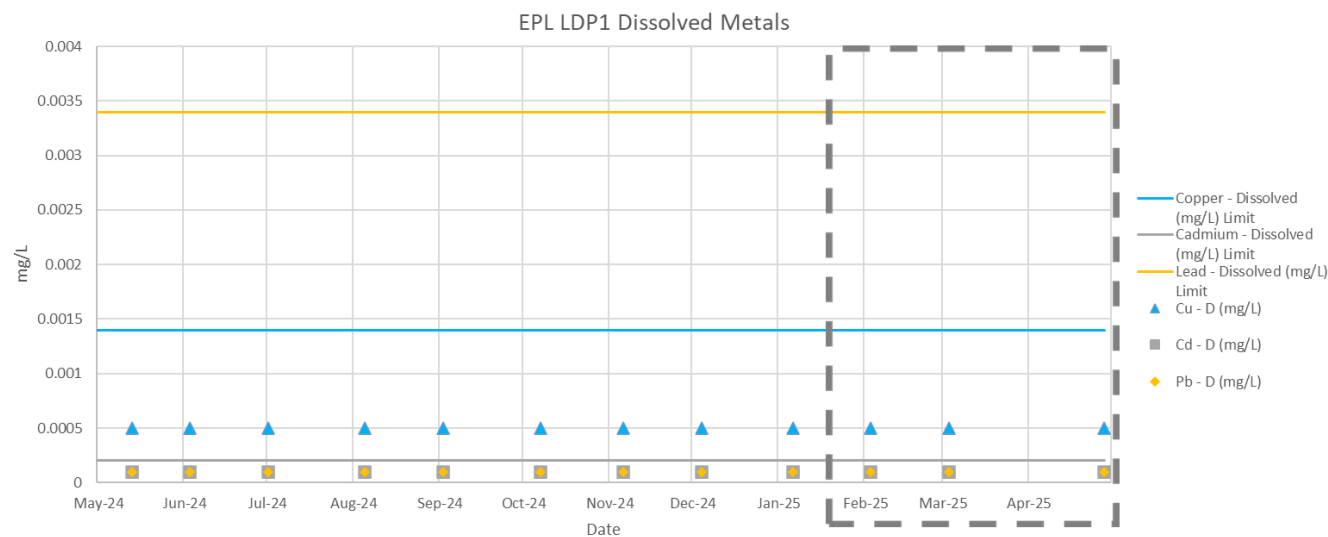
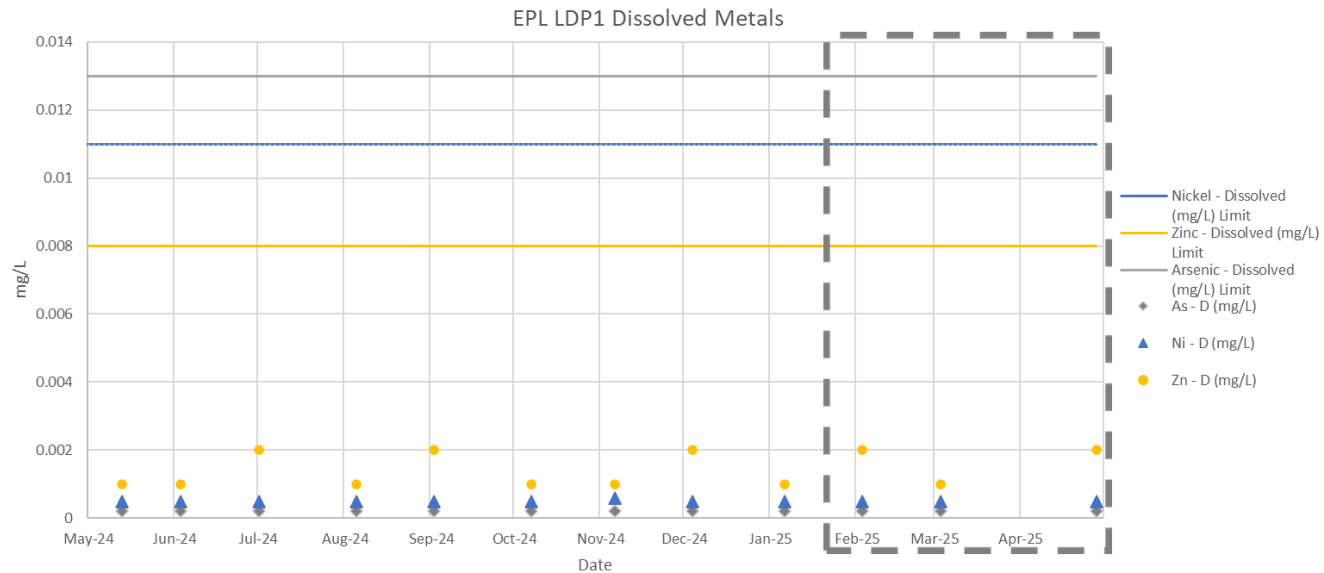
EPA 1 Daily Average EC
May 2024 - April 2025



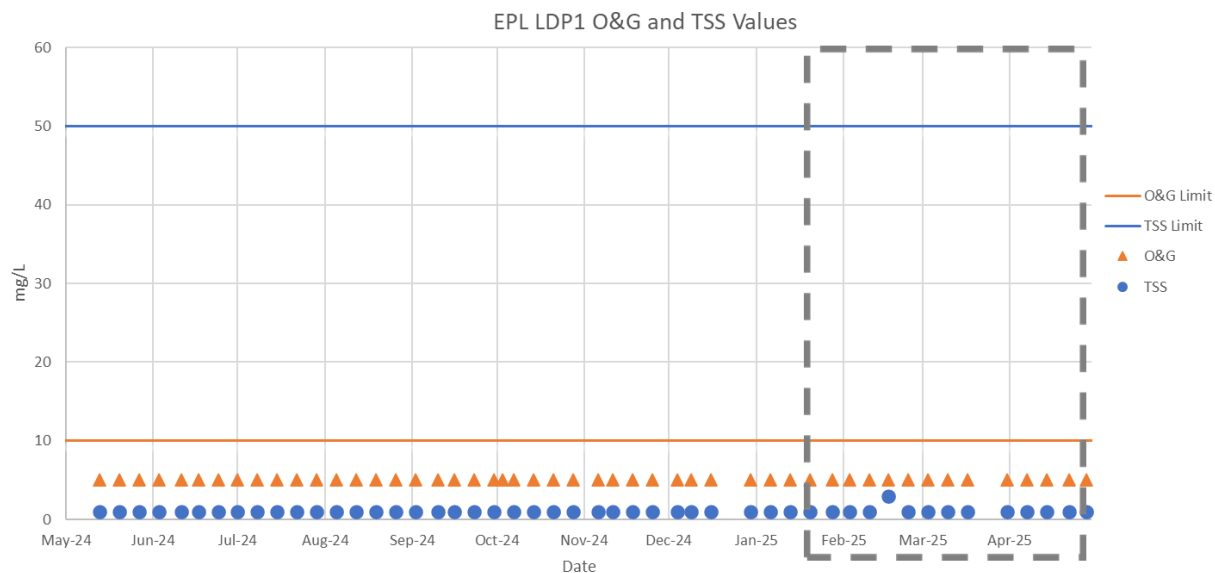
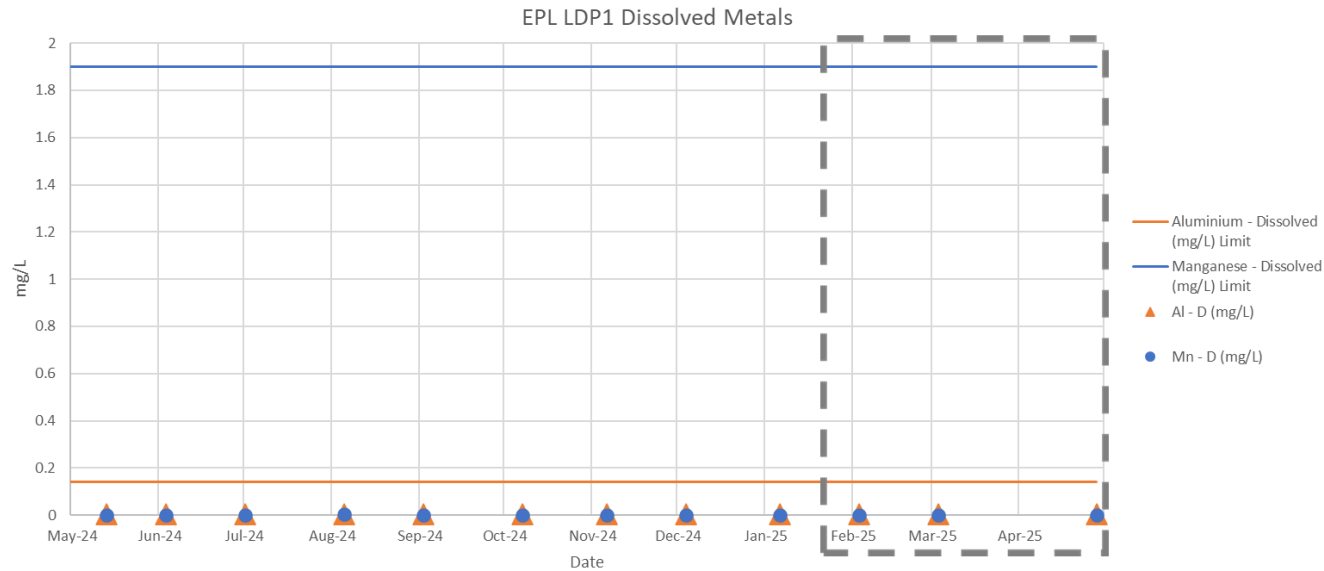
EPA 1 Daily Average Turbidity
May 2024 - April 2025



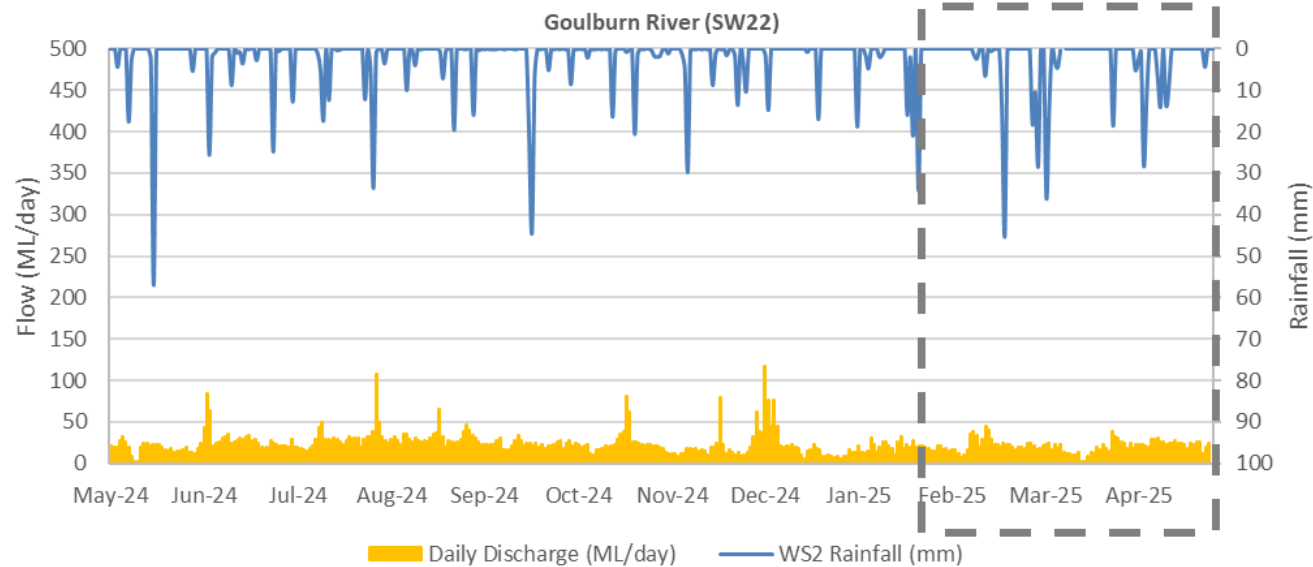
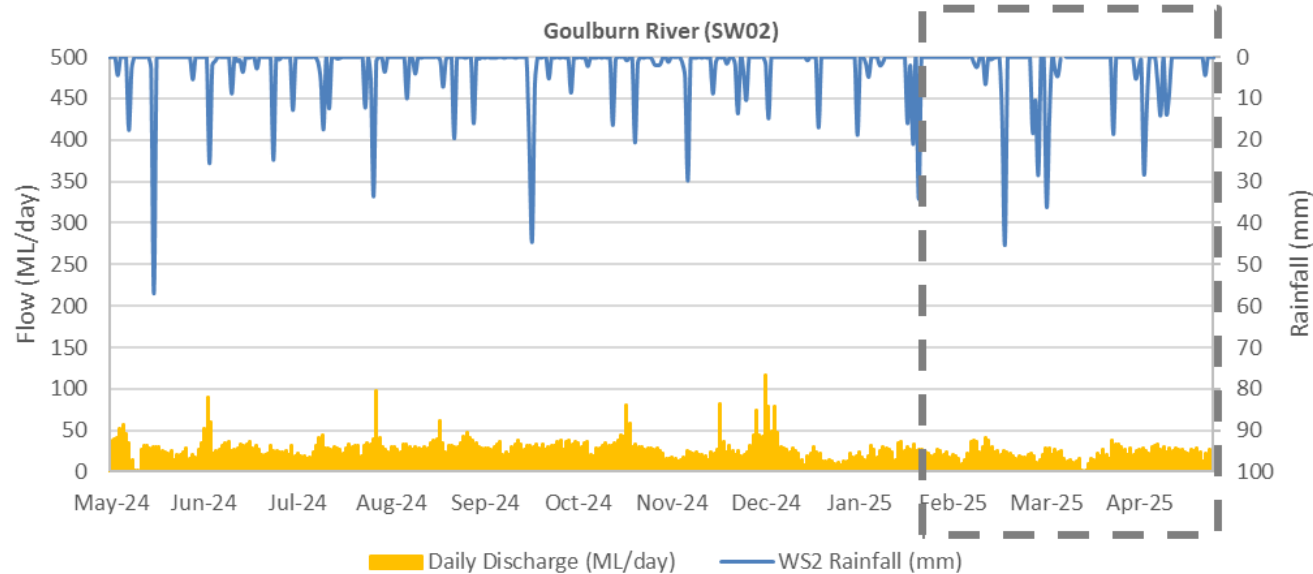
Water Release – EPA01



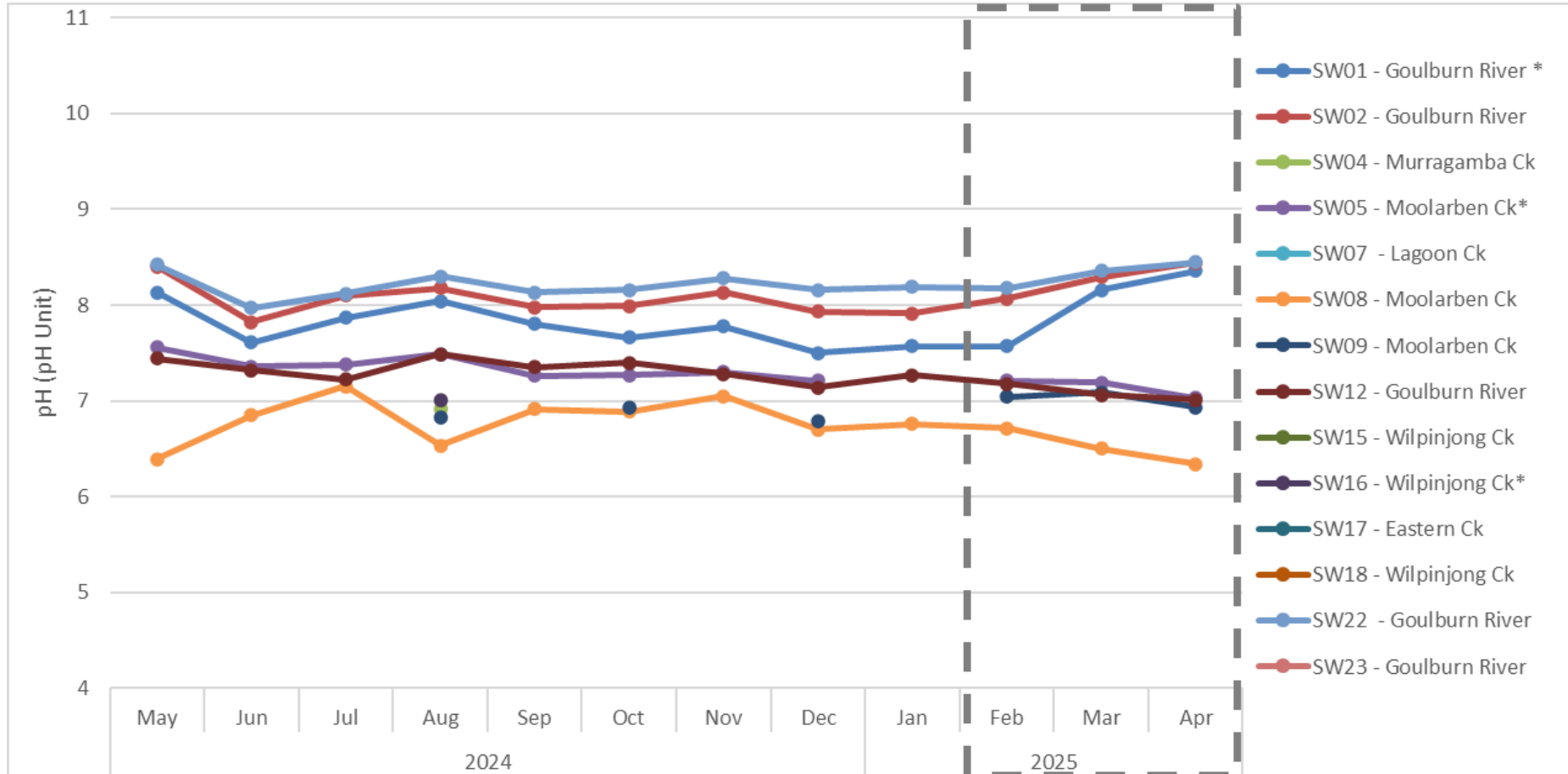
Water Release – EPA01



Stream Flow – Goulburn River

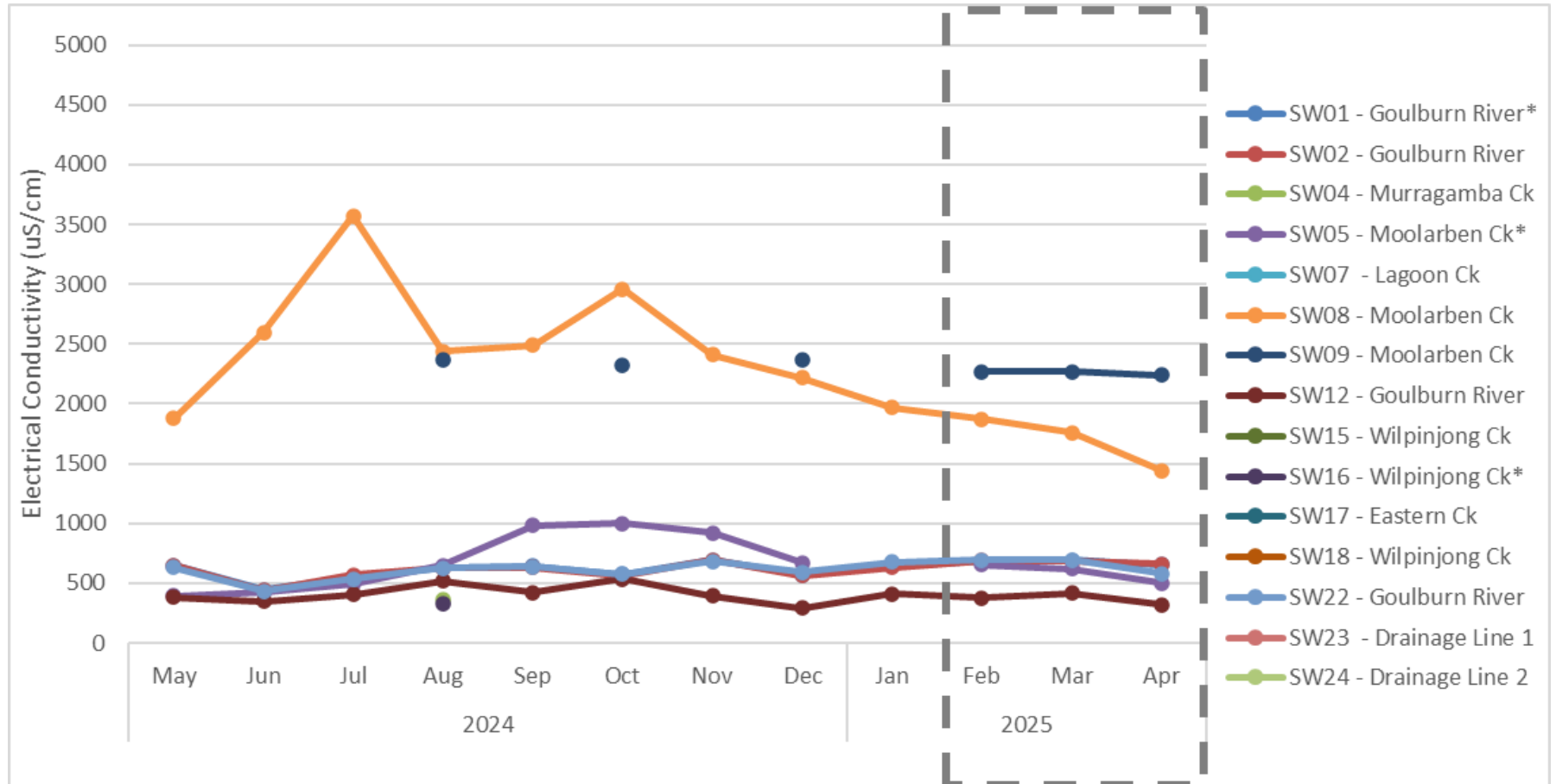


Water Quality - pH



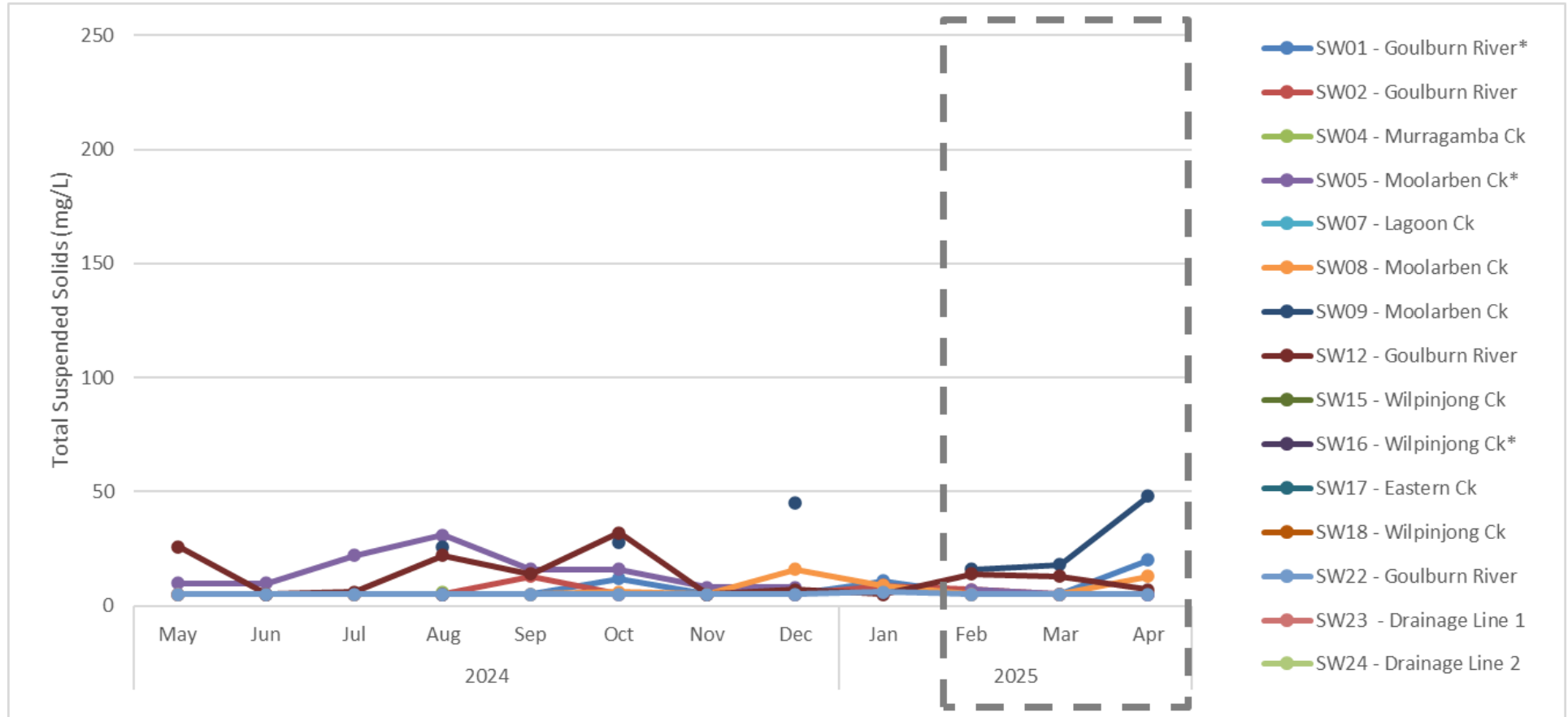
* Monitoring Locations with associated trigger investigation levels as per the Surface Water Management Plan

Water Quality - EC



* Monitoring Locations with associated trigger investigation levels as per the Surface Water Management Plan

Water Quality - TSS



* Monitoring Locations with associated trigger investigation levels as per the Surface Water Management Plan

Air Quality

Site	April 2024 PM10 Annual Average ($\mu\text{g}/\text{m}^3$)	April 2025 PM10 Annual Average ($\mu\text{g}/\text{m}^3$)	Air Quality PM10 Annual Average Criteria ($\mu\text{g}/\text{m}^3$)
TEOM 01	17.4	15.9	25.0
TEOM 04	15.1	13.2	25.0
TEOM 07	11.2	7.8	25.0

Site	April 2024 PM2.5 Annual Average ($\mu\text{g}/\text{m}^3$)	April 2025 PM2.5 Annual Average ($\mu\text{g}/\text{m}^3$)	Air Quality PM2.5 Annual Average Criteria ($\mu\text{g}/\text{m}^3$)
TEOM 07	5.1	3.3	8.0

Monthly monitoring reports are available on our website:

www.moolarbencoal.com.au/page/environment/environmental-monitoring/

Blasting

Site	Feb 2025 Blast Overpressure (dBL)		Mar 2025 Blast Overpressure (dBL)		Apr 2025 Blast Overpressure (dBL)		Limit (dBL)
	Min	Max	Min	Max	Min	Max	
BM1 Ulan School	82.3	110.8	84.8	103.9	86.4	111.6	115/120
BM5 Ridge Rd	84.5	103.2	79.4	108.0	83.4	114.4	115/120
BM8 Moolarben Rd	82.3	101.6	85.9	108.7	83.4	104.0	115/120

Site	Feb 2025 Ground Vibration (mm/s)		Mar 2025 Ground Vibration (mm/s)		Apr 2025 Ground Vibration (mm/s)		Limit (mm/s)
	Min	Max	Min	Max	Min	Max	
BM1 Ulan School	0.03	0.48	0.06	0.65	0.03	0.56	5/10
BM5 Ridge Rd	0.03	0.20	0.05	0.33	0.03	0.18	5/10
BM8 Moolarben Rd	0.01	0.59	0.02	0.38	0.01	0.22	5/10

Monthly monitoring reports are available on our website:

www.moolarbencoal.com.au/page/environment/environmental-monitoring/

Noise Monitoring

- All monthly & quarterly attended noise monitoring within criteria.
- Continued implementation of:
 - Planning controls - scheduling
 - Engineering controls - attenuation
 - Operational controls - bunds/screens
 - Real-time monitoring triggers
 - Real-time response protocols

LEGEND

- Exploration Licence Boundary
- Mining Lease Boundary
- Rail Line
- Watercourse

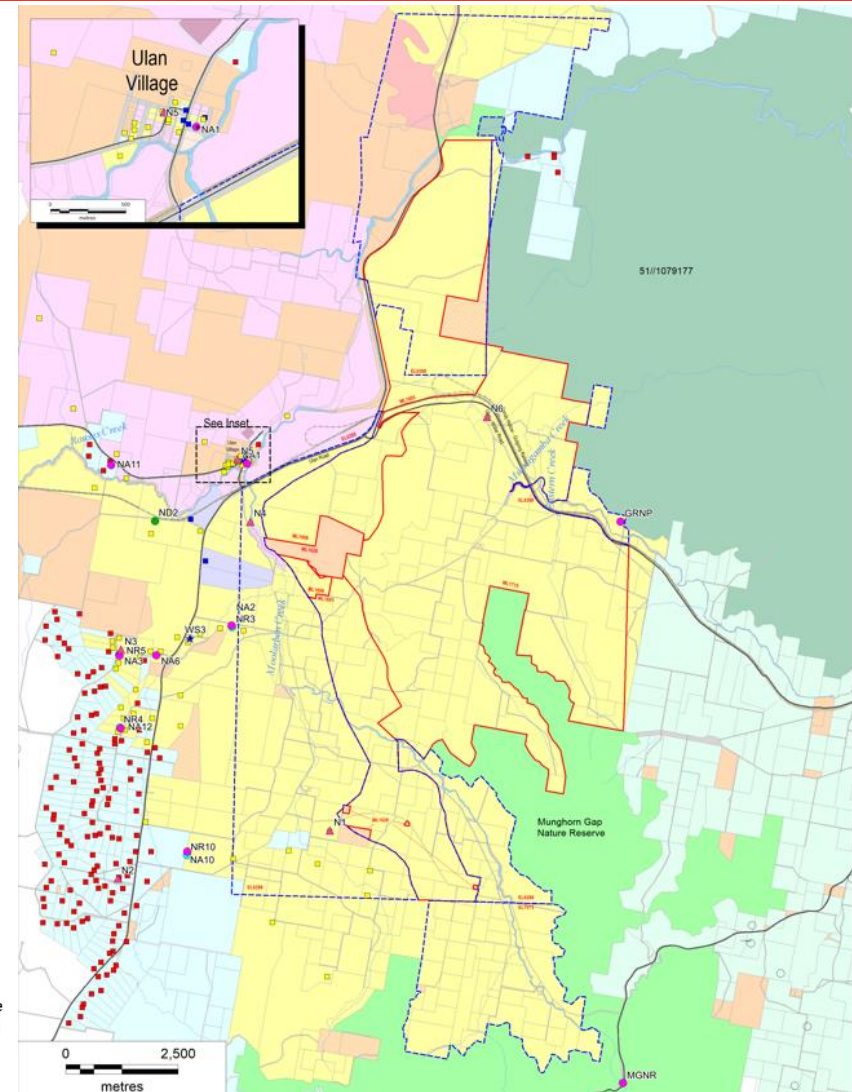
Ownership

- Yancoal
- Ulan Coal Mines Limited
- Wilpinjong Coal Mine
- Privately Owned
- Crown
- Commercial

- National Park
- Nature Reserve
- Mine Owned Receiver
- Private Receiver
- Commercial Receiver

Noise Monitoring Locations

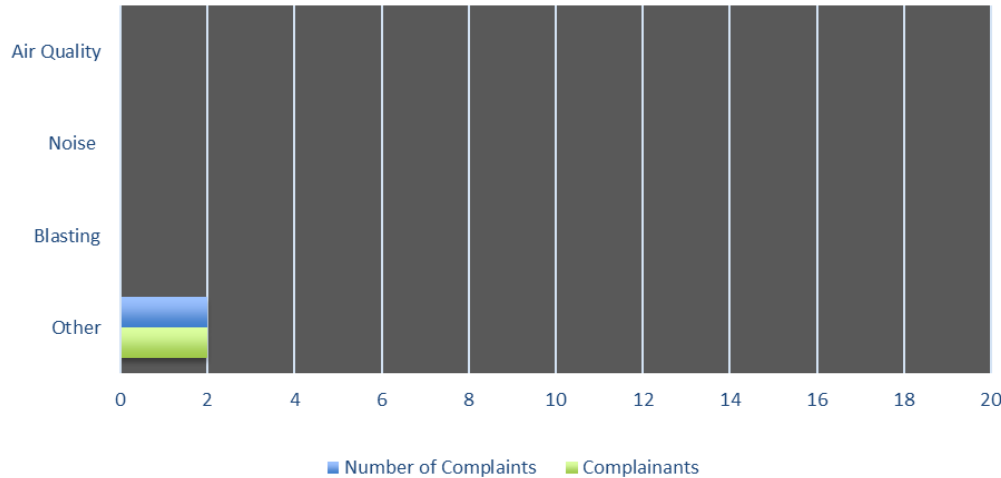
- Real-time Noise Monitoring Site
- Attended Noise Monitoring Site
- Directional Receiver
- Background Noise Monitoring
- Weather Station



Community Complaints

MCO Complaints

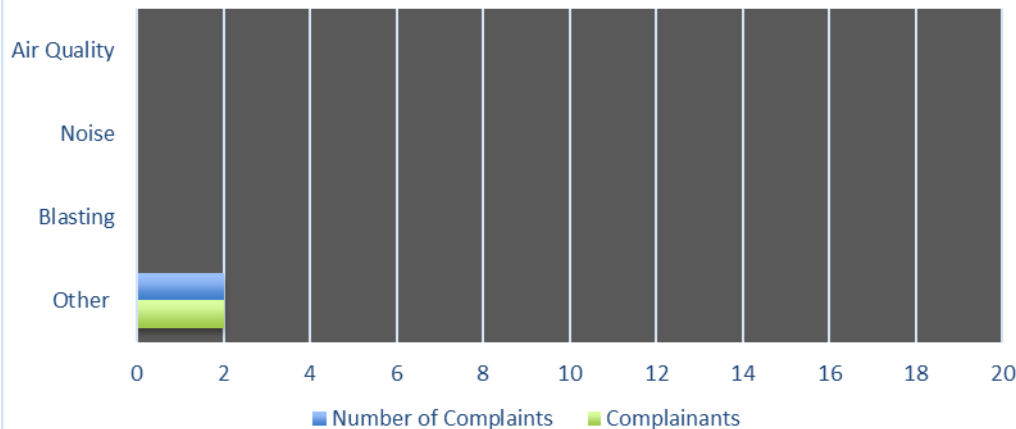
Feb 2025 - May 2025



- 2 Complaint in 2025 YTD
- All complaints investigated
- No non-compliances identified

MCO Complaints

2025 Year



Rehabilitation Update

- Landform shaping and drainage works continuing in OC2, OC3 and OC4.
- Rehabilitation maintenance works are continuing, primarily weed management in OC2 and OC4 areas

Rehabilitation Update – OC2 Landform Shaping



Shaping Completed 2024

Shaping In Progress 2025

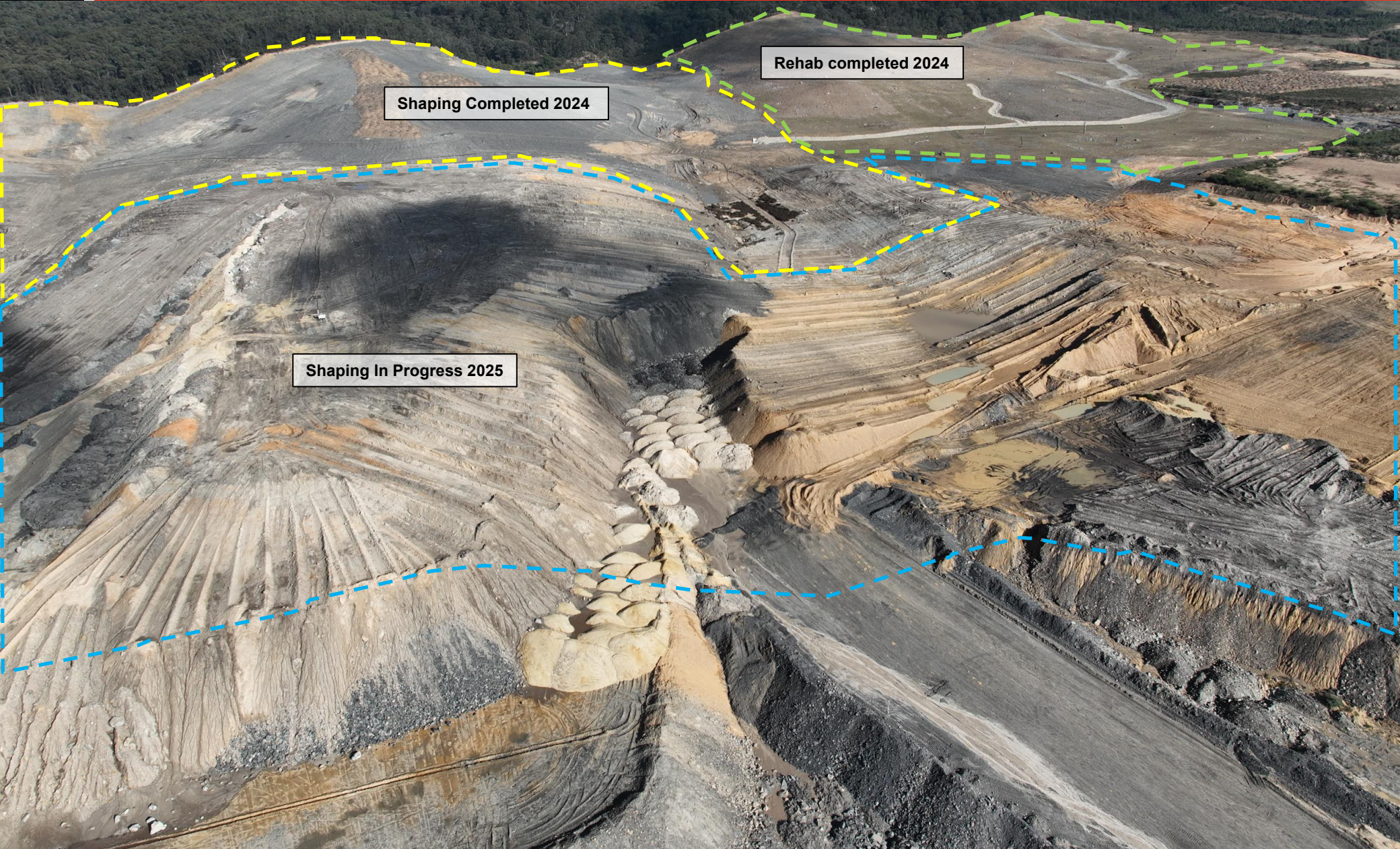
Rehabilitation Update – OC3 Landform Shaping



Rehab completed 2024

Shaping In Progress 2025

Rehabilitation Update – OC4 Landform Shaping



Rehab completed 2024

Shaping Completed 2024

Shaping In Progress 2025

Biodiversity Offset Areas Update

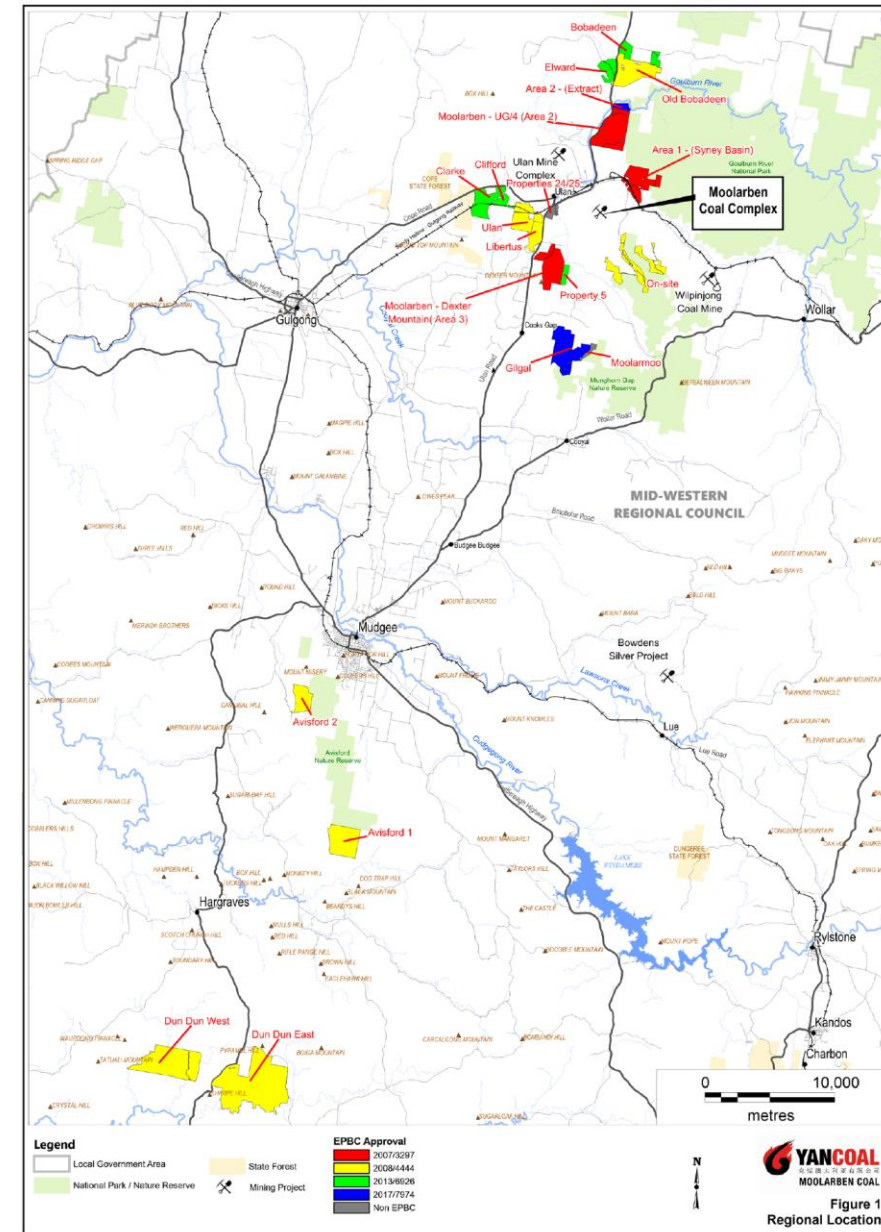
- Maintenance works ongoing including vertebrate pest control and weed management. Wild dog/fox and pig baiting programs underway in June 2025 across MCC landholdings.
- Tree and shrub planting program completed in April with ~ 35,000 stems planted in Bobadeen, Moolarmoo and Onsite Offset areas.
- DPHI EPBC biodiversity offset review and inspection program 20/05/2025 went well with positive feedback



NCOAL
澳大利亚有限公司
MOOLARBEN COAL

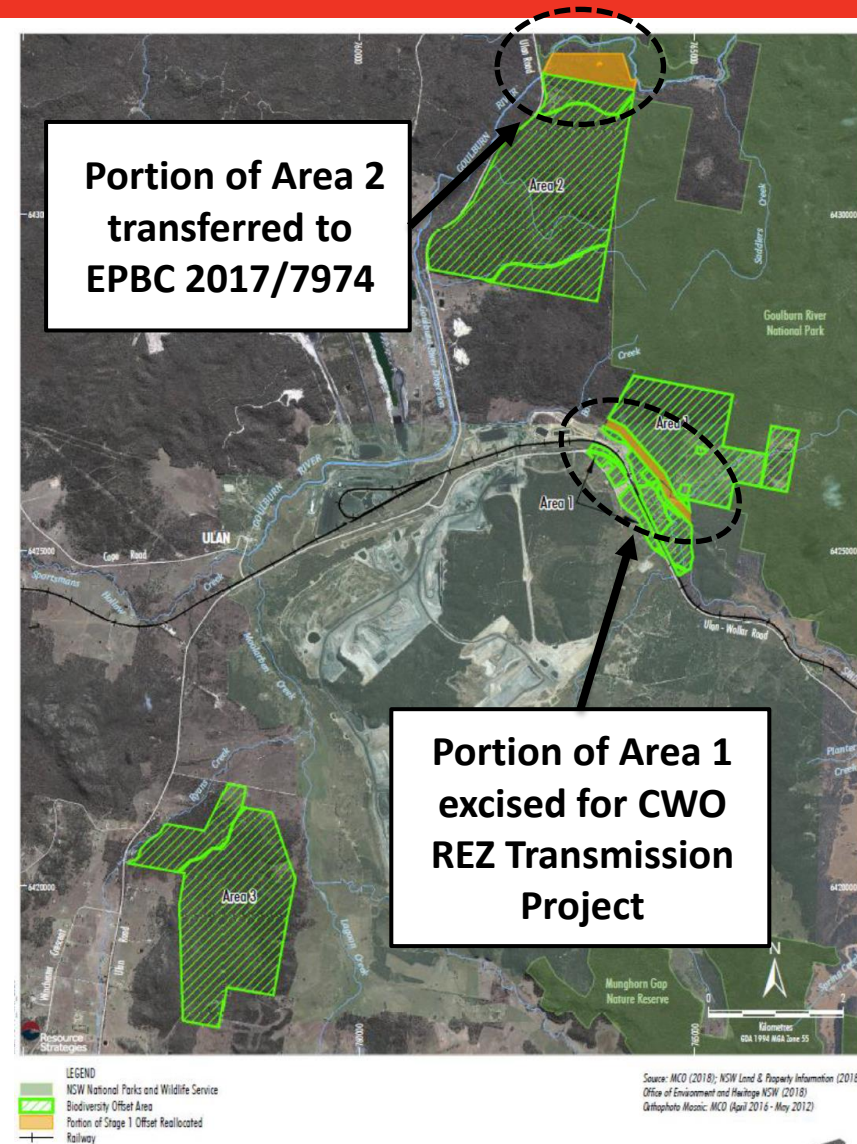
Moolarben Coal Complex Biodiversity Offsets

EPBC Approval	NSW Approval	
	Stage 1 PA 05_0117	Stage 2 PA_0117
2007/3297 (Stage 1)	<ul style="list-style-type: none"> Area 1 Area 2 (<i>Less Extract</i>) Area 3 	N/A
2008/4444 (Stage 2)	N/A	<ul style="list-style-type: none"> Onsite Offset Old Bobadeen Libertus Ulan 18 Dun Dun East/West Avisford 1/2
2013/6926 (Stage 1 Mod 9)	<ul style="list-style-type: none"> Clarke Clifford Elward Property 5 Bobadeen East/West 	N/A
2017/7974 (Stage 1 Mod 14 + Stage 2 Mod 3)	<ul style="list-style-type: none"> Gilgal Area 2 (<i>Extract</i>) 	N/A
Non-EPBC	<ul style="list-style-type: none"> Moolarmoo Property 24/25 	N/A



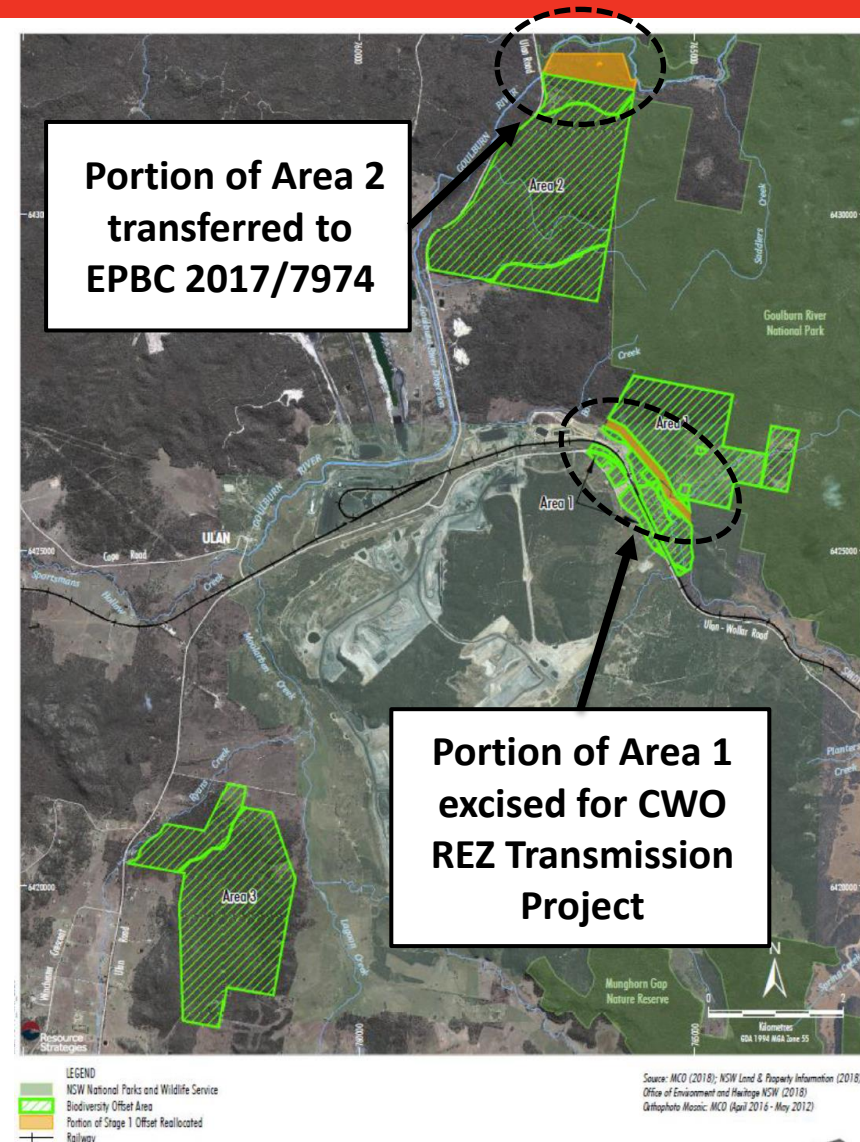
Biodiversity Offset Area Variations

- EPBC 2007/3297 subject to **two** separate variations to the offset areas.
 1. **Area 2** – 2019 variation for Moolarben Stage 1 Mod 14 / Stage 2 Mod 3.
 2. **Area 1** – 2024 variation for EnergyCo CWO REZ Transmission Project (SSI-48323210).
- In 2019, as part of Stage 1 Mod 14 / Stage 2 Mod 3 a portion of Area 2 was extracted and **transferred** to EPBC 2017/7974.
 - This occurred as biodiversity credits associated with proposed relinquishment areas were used to compensate additional disturbance proposed for the Mods.



Biodiversity Offset Area Variations

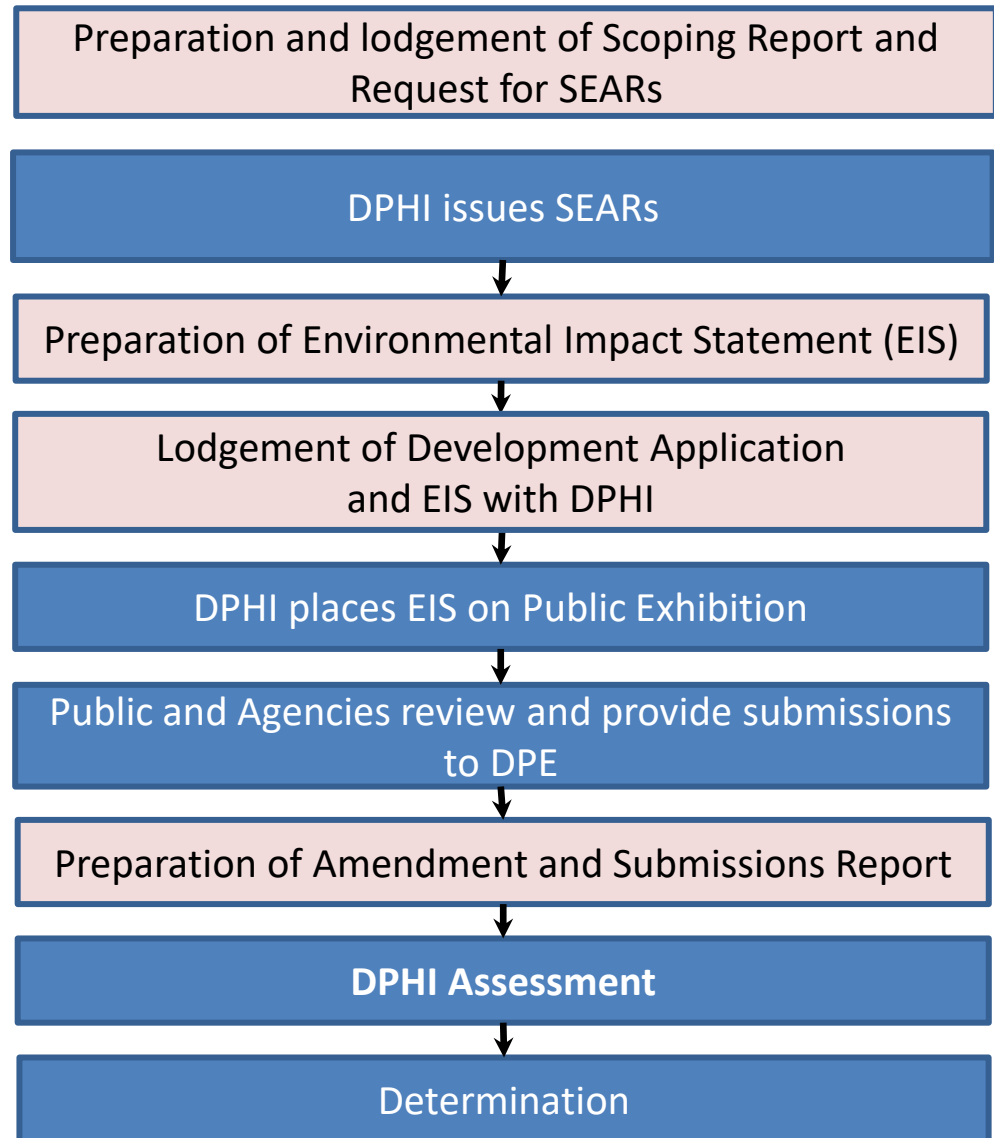
- A portion of the CWO REZ Transmission corridor is located within Moolarben's Area 1 offset.
- In Nov 2024, following approval of the CWO REZ Transmission Project (SSI-48323210), the relevant portion of Area 1 was **excised** from EPBC 2007/3297.
- The CWO REZ Transmission Project is required to replace biodiversity credits associated with the excised portion of Area 1, as well as offset any impacts associated with disturbance within this area.



OC3 Extension – Amended Project

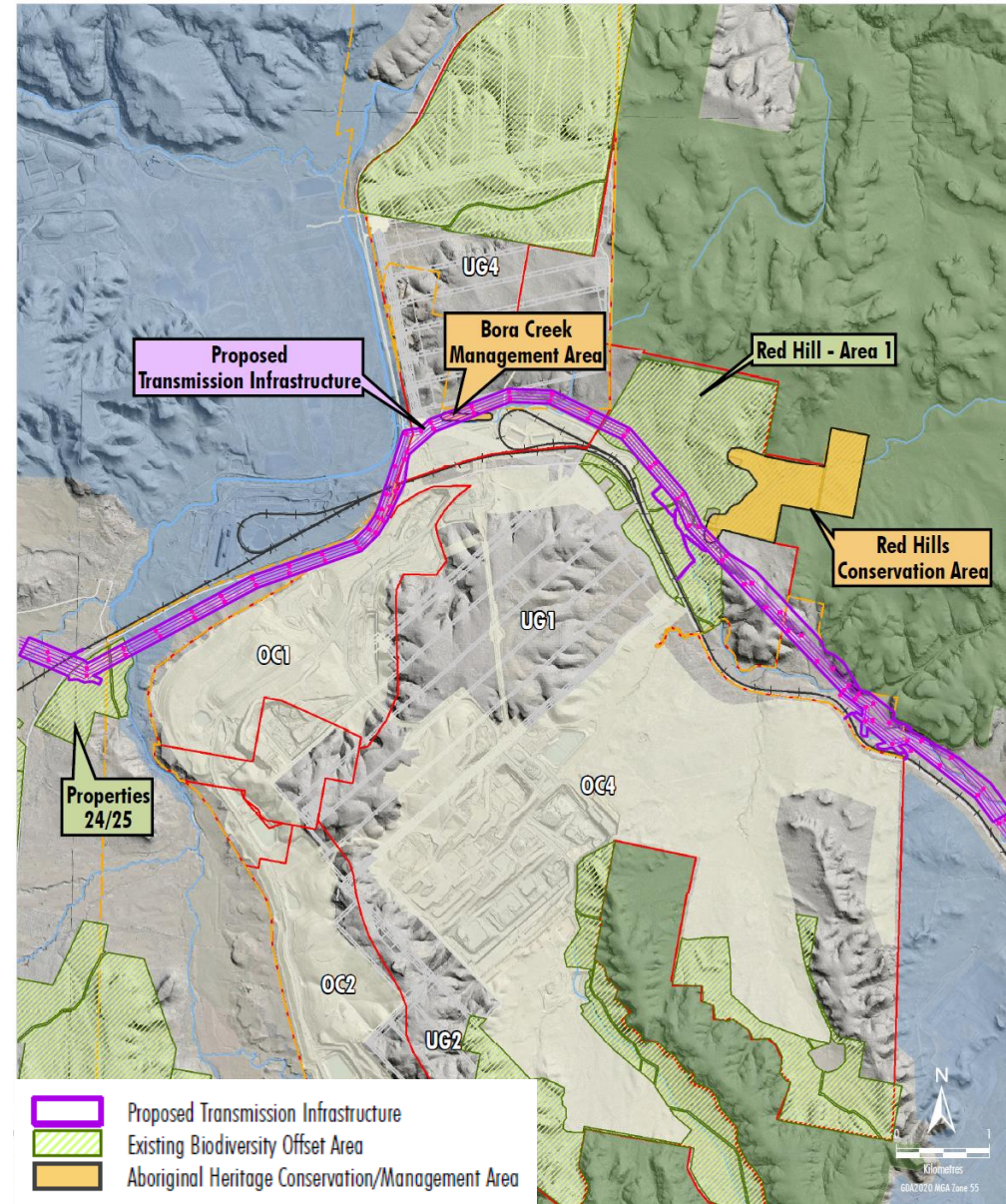
- DPHI completing assessment of Amended Project with input from Agencies and the Independent Expert Advisory Panel for Mining (IEAPM).
 - MCO responding to requests for information from DPHI as part of this process.

**Current
Status** →



NSW EnergyCo Transmission Project

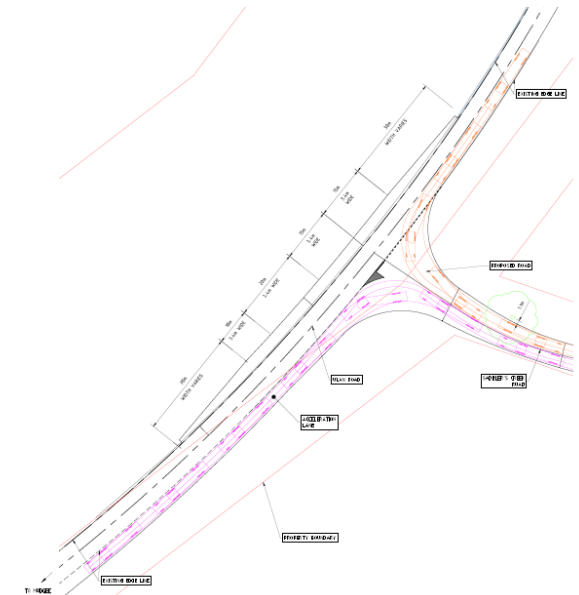
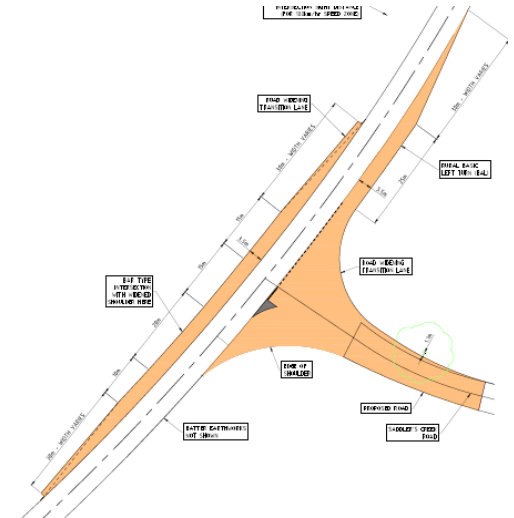
- MCO continue to cooperate with EnergyCo on transmission line corridor
- Indicated timing for works;
 - Currently accessing the corridor for pre-construction activities
 - Intersection upgrades July 2025



Saddlers Creek Rd intersection

Upgrade of Saddlers Creek Road – Ulan Road Intersection

- Working through approval process with MWRC
 - Design submitted to MWRC for approval
 - Due diligence assessments to support design commenced



Employment Update

Current Traineeships

- 26 Trainees currently onsite
 - 6 Underground Trainees
 - 20 Open Cut Trainees

Apprentices

- 32 Apprentices currently onsite
 - 8 Underground Apprentices
 - 16 Open Cut Apprentices
 - 8 Coal Handling and Preparation Plant (CHPP) Apprentices



2024 Annual Review Summary

- Activities During the Reporting Period
- Environmental Performance
- Water Management
- Rehabilitation
- Community

Activities During the Reporting Period

- Mining operations in OC1, OC2, OC3, OC4, and UG4
- Secondary extraction undertaken in Longwall LW402 and LW403
- Progressive rehabilitation in OC2, OC3 and OC4
- Completion of upgrade of the Water Treatment plant and associated infrastructure, water management infrastructure
- 18.99 Mt product coal
- Exploration in EL7073, ML1605, and ML1715

Exploration Licence Boundary
Mining Lease Boundary

2024 Disturbance
Previous Mining Activities
Water Management
2024 Disturbance
Proposed 2025 Disturbance
UG Mining Activities
Proposed 2025 UG Mining

Legend
2024 Land Being Prepared for Rehabilitation
2024 Rehabilitation Areas
Previous Land Being Prepared for Rehabilitation
Previous Rehabilitation Areas
Proposed 2025 Rehabilitation

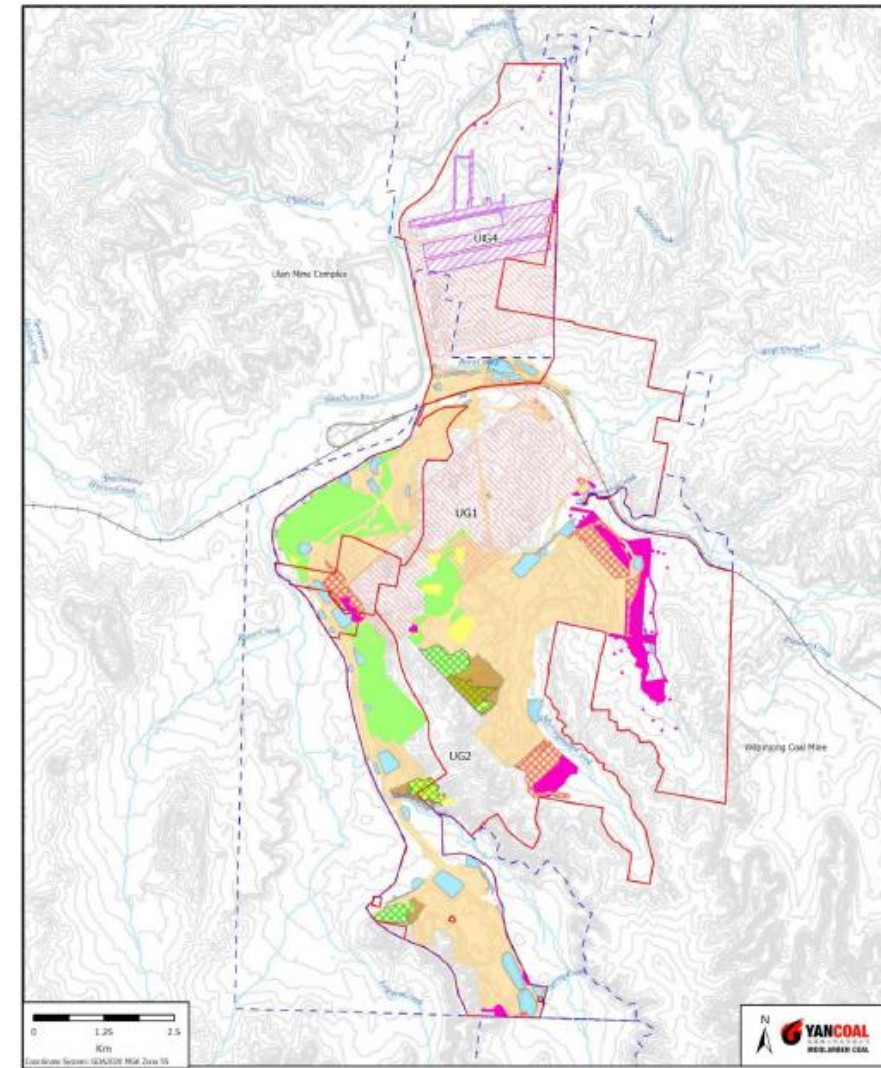


Figure 3
2024 Mining Activities and Proposed 2025 Activities

Noise, Blasting and Air Quality

■ Noise

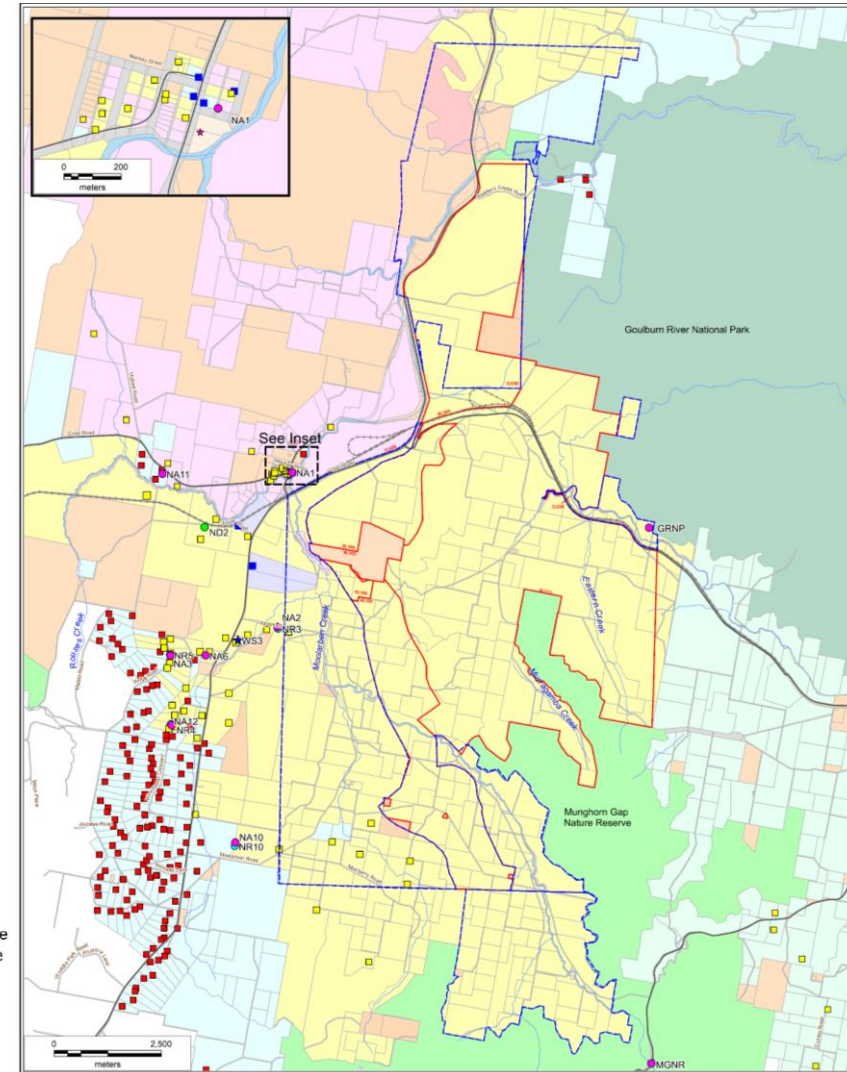
- All attended noise monitoring within criteria.

■ Blasting

- No reportable fume events.
- Two overpressure exceedances of the blasting criteria occurred during the reporting period.
- All vibration results within criteria.

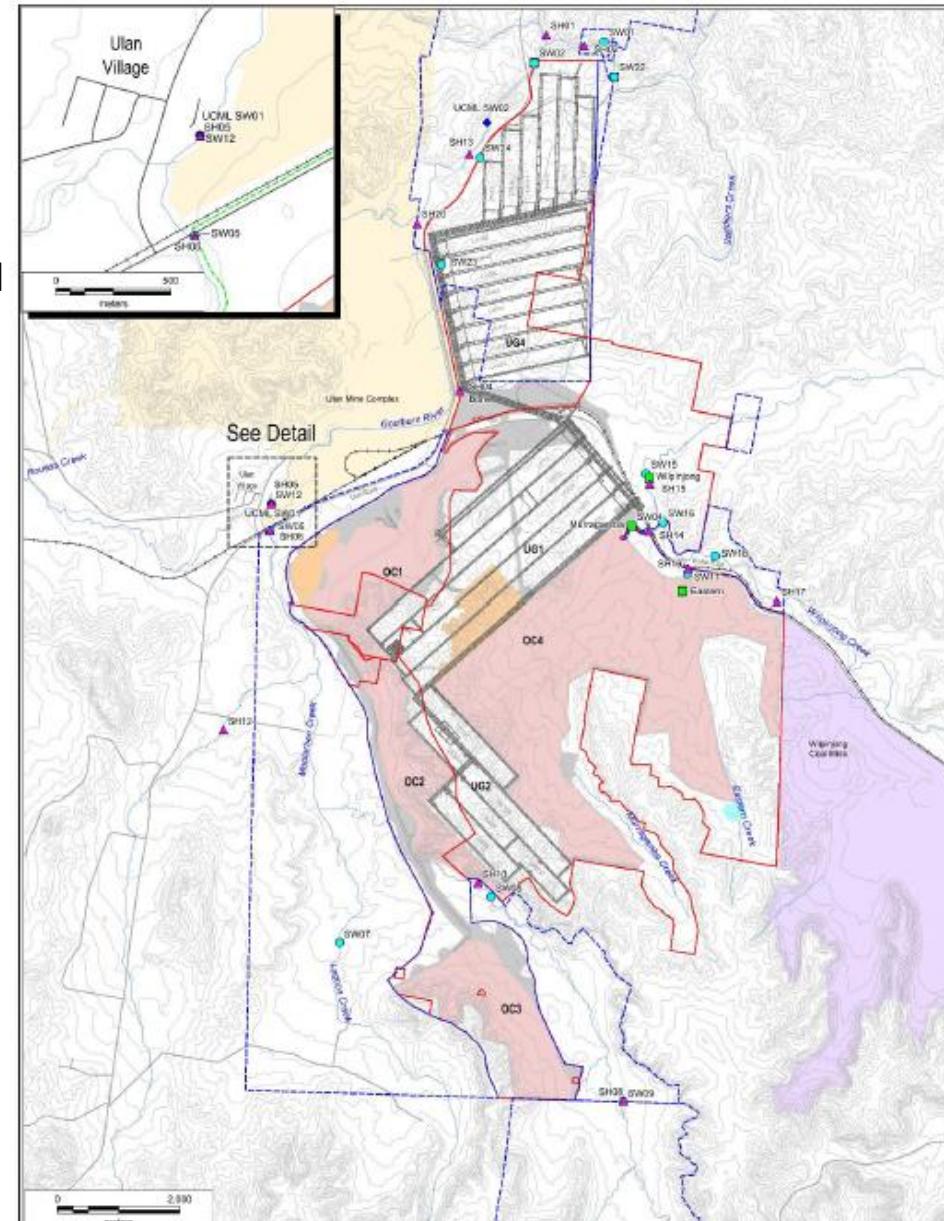
■ Air Quality

- Annual average PM10 and PM2.5 within criteria.
- All dust deposition results below criteria.



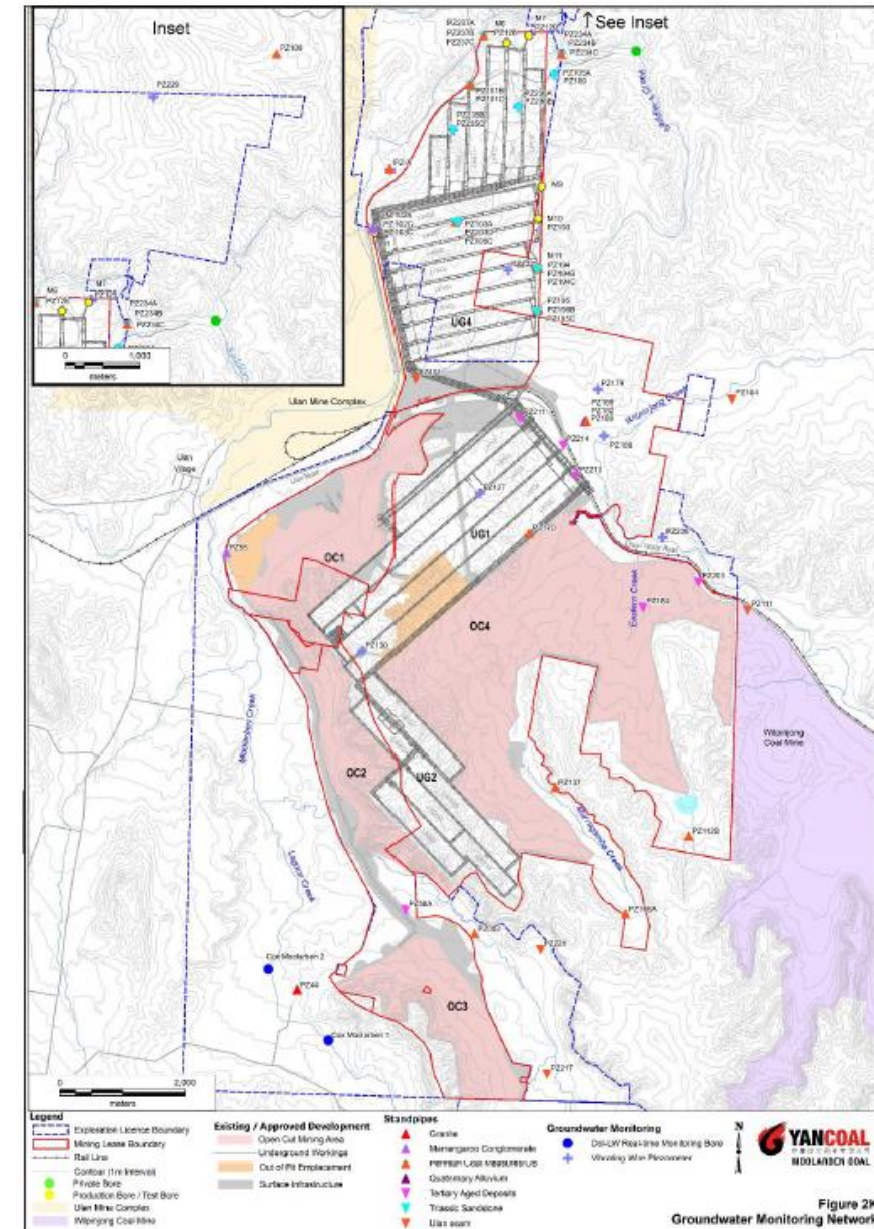
Water

- **Water**
 - Above average rainfall (894.8mm vs Avg of 651.2mm).
 - 2,097 ML of water discharged.
 - Surface water influenced by climatic conditions and generally consistent with historical range.
- **Stream Health**
 - Aquatic habitat condition influenced by a shift in prevailing dry weather patterns to above average rainfall with more consistent wet weather and occasional intense storm activity.
 - Climatic factors and flow regimes continue to be the dominant influence on aquatic ecology.
- **Channel Stability**
 - Stability was variable within each creek.
 - The 2024 channel stability trends were generally comparable to previous result



Groundwater

- MCO monitors a network of piezometers in accordance with the Groundwater Management Plan. The monitoring program includes monthly monitoring of standing water level in standpipes, and pressures for vibrating wire piezometers.
- Groundwater level trends during 2024 were influenced by the Rainfall Cumulative Deviation (RCD), Underground mining operations, open cut mining operations and regional depressurisation.
- Permian bores exhibited a range of levels associated with proximity to mining, strata interval monitored and location.
- Groundwater levels in Triassic bores remained relatively stable over the period except for PZ192_68m due to its proximity to UG4 mining.
- The groundwater level in PZ213 and PZ214 exceeded the trigger level and an investigation by a third party was undertaken according to the GWMP Trigger Action Response Plan (TARP).



Mine Subsidence

- Subsidence impacts during the period were consistent with predictions. Vertical subsidence was overall similar or less than predictions.
- No performance measures exceeded.
- No built features impacted by subsidence.

Table 29: Comparison of maximum observed and predicted vertical subsidence, tilt & strain for the N, S & R Line.

Survey Line	Type	Maximum vertical subsidence (mm)	Maximum tilt (mm/m)	Maximum tensile strain (mm/m)	Maximum compressive strain (mm/m)
N	Measured	7	0.4	0.6	0.8
	Predicted	<20	<0.5	<0.5*	<0.5*
S	Measured	1401	29	9.3	10
	Predicted	1850	30	10*	8*
R	Measured	6	0.8	7.7	10
	Predicted	<20	<0.5	<0.5*	<0.5*

* denotes that the values represent the conventional strains based on the predicted curvatures multiplied by a factor of 10.

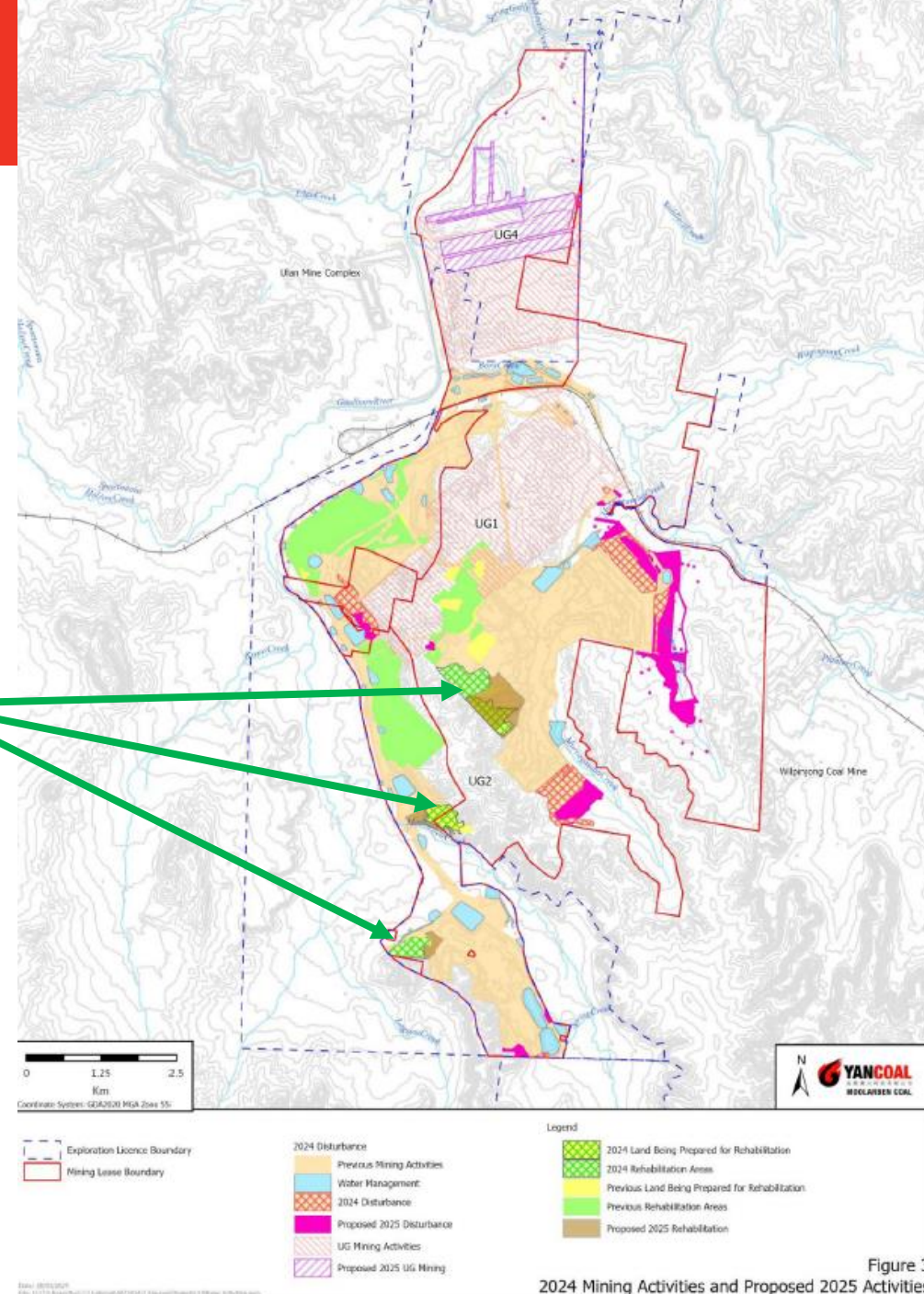


Rehabilitation

- **Activities**
 - Progressive rehabilitation in OC2, OC3 and OC4.
 - Maintenance of existing rehabilitation has continued.
- **Status**
 - 84.45ha Landform Establishment.
 - 421.11ha Ecosystem and Landuse Establishment to date.

Table 31: Mining and Rehabilitation Status

Mine Area Type	Previous Reporting Period (2023)	This Reporting Period (2024)	Next Reporting Period (2025)
Total Mine Footprint	2187	2302.35	2467.06
Total Active Disturbance	1724	1796.74	1893.26
Land being Prepared for Rehabilitation ¹	90	84.45	111.45
Land under active Rehabilitation ¹	373	421.11	462.35
Completed Rehabilitation*	0	0	0



Incidents, Compliance and Complaints

■ Incidents and non-compliances

- On 8 February 2024 following an Open Cut 4 overburden blast, Blast Monitor 8 on Moolarben Road measured an overpressure result of 125.8 dBL above the limit of 120 dBL. MCO self-reported the incident on 8 February 2024.
- On 29 May 2024 following an Open Cut 1 overburden blast, Blast Monitor 1 at Ulan Village measured an overpressure result of 120.3dBL above the limit of 120 dBL. MCO self-reported the incident on 29 May 2024.
- On 18 November 2024 sediment laden stormwater runoff from the OC403 pit progression area breached erosion and sediment controls following an intense rainfall event. The sediment laden stormwater runoff flowed into the Murragamba Creek Catchment and was captured in the Murragamba Clean Water Diversion Dam (CWD01). MCO self-reported the incident on 18 November 2024.

■ Complaints

- 7 direct complaints from 5 complainants.
- Decrease from the previous reporting period.
- 43% of complaints were received from 1 complainant.
- “Noise” was the primary complaint category.

2024 Community Support Program (CSP)

Highlights of the 2024 Yancoal-Moolarben Coal CSP Events included:

- Tunes on the Turf
- Cassilis Country Music Inc
- Mudgee Preschool Shade Sails
- Mudgee Running Festival
- Can Cruise
- Max Potential



