

Stratford Coal CCC Meeting

Presentation –
Company Report & Overview
of Activities

August 2025

Robert Carter
Environment & Community Superintendent

Table of Contents

1. Agenda Item 7a (Progress at the Mine)
2. Agenda Item 7b (Environmental Reporting)
3. Agenda Item 7c (Environmental Management Plans and Monitoring)
4. Agenda Item 7d (Mine Closure Planning update)
5. Agenda Item 7e (Community Complaints)
6. Agenda Item 7f (Community Programs)
7. Agenda Item 7g (Recruitment Update)
8. Agenda Item 7h (Stratford Renewable Energy Hub Update)

1. Progress at the Mine

2025 Works to Date

- Overburden re-handle to achieve final landform
- Total H1 waste movement of 1,425,032 LCM
- PAF and NAF overburden re-handle into Stratford East Pit
- Civil works packages for mine closure projects commenced in January 2025
- CHPP demolition project commenced in May 2025

Looking ahead – Focus for H2 2025

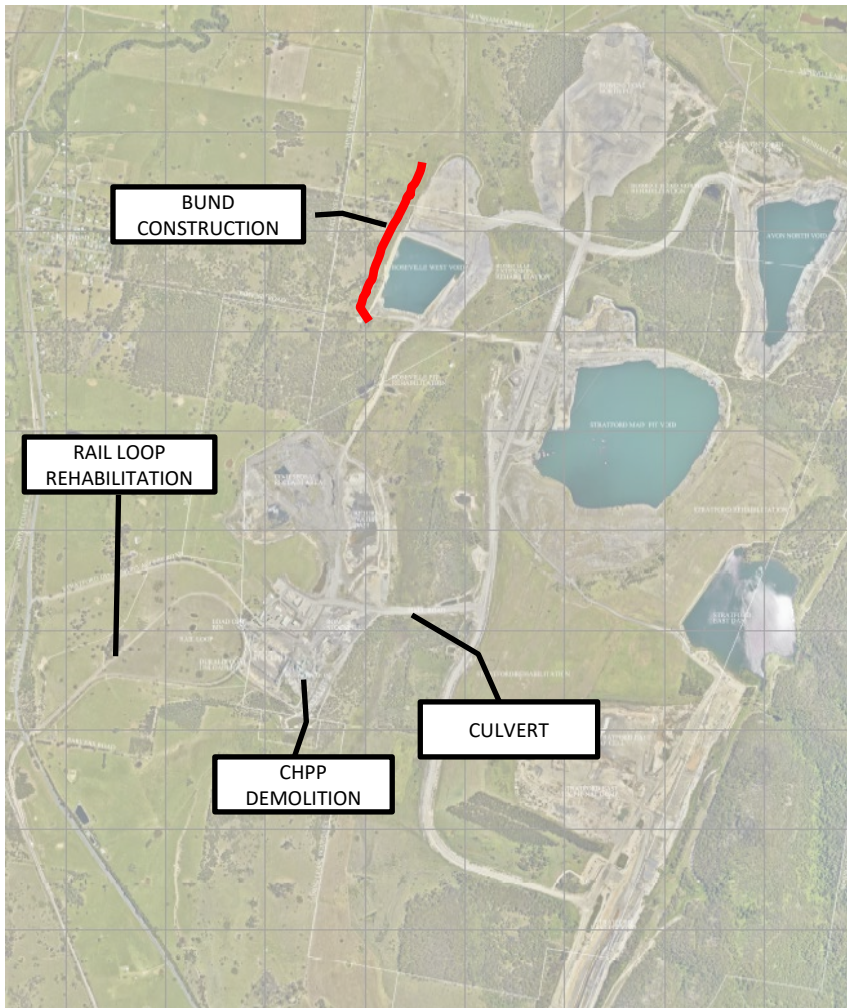
- Complete Mine Closure Studies
- Reshaping Avon North, BRN, Roseville West and Main Pit
- Stratford East & Codam rehandle and reshaping
- Rehabilitation works as areas available
- CHPP demolition and Rail Loop track removal



Plate 1: Stratford East Pit, looking South. Taken 16 July 2025



Project Civil Works



**Rail Loop Disconnection
May 2025**



Bund to be Constructed



Culvert Construction July 2025

CHPP Demolition

BEFORE



AFTER

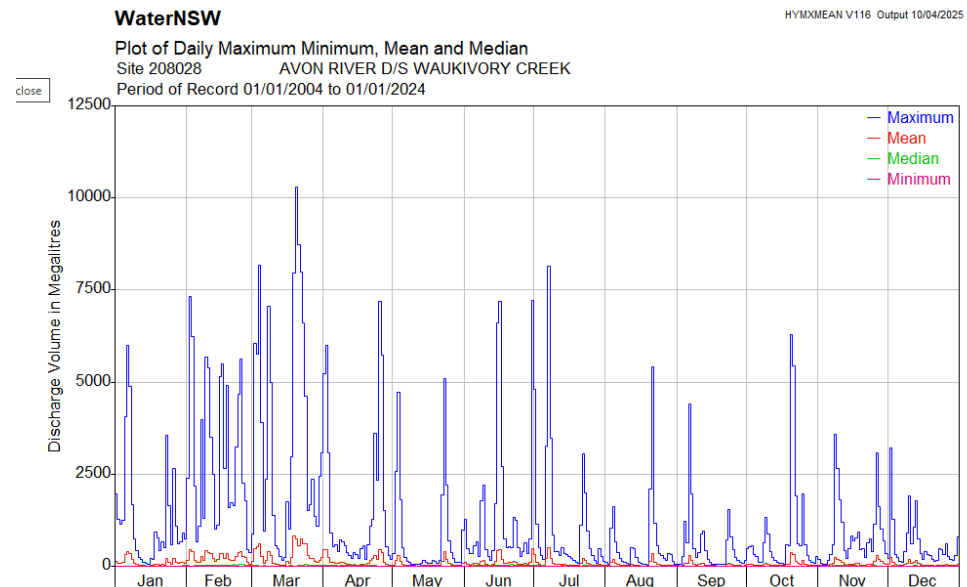
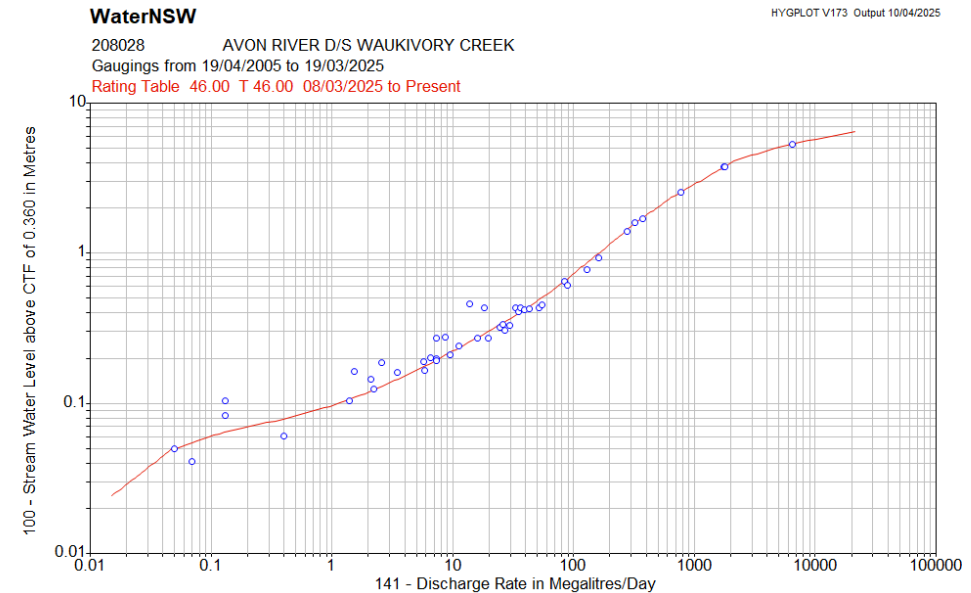


2. Environmental Reporting & Regulators

Management Area	Project	Status
Reporting	<ul style="list-style-type: none"> Stratford Mining Complex Annual Review 2024 Stratford Mining Complex Annual Biodiversity Report 2024 Stratford Mining Complex Annual Rehabilitation Report Stratford EPL 5161 Annual Return 2025 NPI and NGERS reporting 2024-25 	<ul style="list-style-type: none"> The Stratford Mining Complex 2024 Annual Review was submitted to the Department of Planning, Housing and Infrastructure and other regulators in March 2025. The regulator notified of acceptance during August 2025 and the document is now available on the Stratford Coal website. The Stratford Mining Complex 2024 Annual Biodiversity Report has been completed and is provided as an appendix in the 2024 Annual Review. The Annual Rehabilitation Report has been completed and has been summarised in the 2024 Annual Review. The Stratford EPL 5161 Annual Return is in preparation and will be submitted to the EPA in late August. The NPI and NGERS annual reporting requirements for the Stratford Mining Complex are in preparation. NPI (Dept. of Climate Change, Energy, the Environment and Water) is due 30 September annually. NGERS (Clean Energy Regulator) is due 31 October annually.
Regulator	<ul style="list-style-type: none"> Environmental Management Plans (EMPs) EPA Resources Regulator 	<ul style="list-style-type: none"> SCPL is preparing revised Environmental Management Plans to reflect the current status of the SMC as the site transitions through closure. The EPA undertook a routine 5 yearly Environmental Risk Assessment of EPL 5161 in November 2024. Response is yet to be received and is expected Q4 2025. Variation to EPL 5161 was issued for the SMC in June 2025 to allow for the emergency release of water from the Stratford East Dam (see next slide). The NSW Resources Regulator conducted a Targeted Assessment Program (TAP) at Stratford in July 2025 which included document review and a site visit. The TAP focussed on decommissioning activities and aims to assess how a site manages risk in relation to decommissioning activities to achieve sustainable rehabilitation objectives.

2. EPL 5161 – Emergency Water Release Variation

- Following the heavy rainfall in May that resulted in major flooding and a disaster declaration for the MidCoast Council region, Stratford water stocks were elevated
- SCPL sought and received approval from the EPA to undertake a controlled release of water from Stratford East Dam
- Release started on 6 June and is approved to continue until 30 August
- Release limit = 25 ML/day
- Maximum daily release to date = 24.6 ML
- Total volume released to 31 July = 1041 ML
- Maximum daily flow in Avon River at Waukivory gauging station exceeds 10,000 ML/day (Water NSW)



Stratford East Dam - Pumping



05/06/25



11/08/25



3. Environmental Management Plans & Monitoring

- a) Air Quality Management
- b) Noise Management
- c) Water Management
- d) Rehabilitation Management
- e) Biodiversity Management
- f) Mine Closure Planning

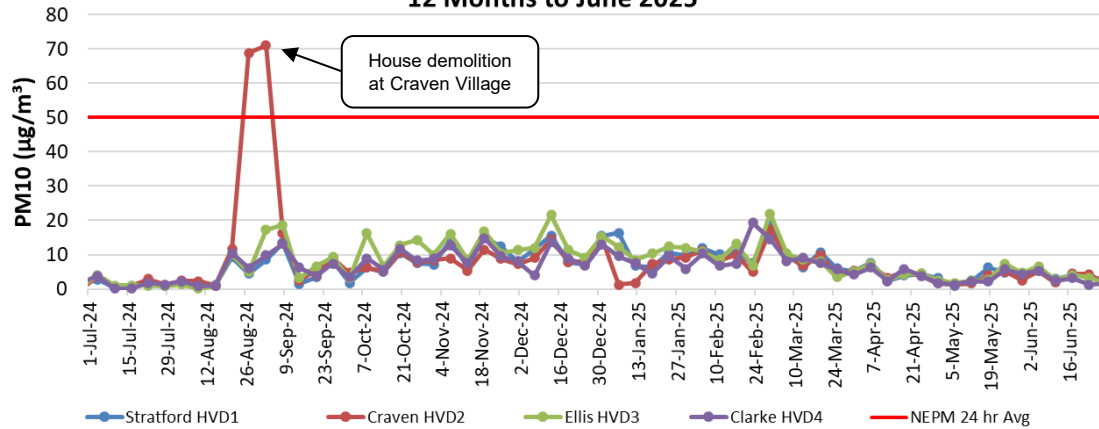


3a. Air Quality Management

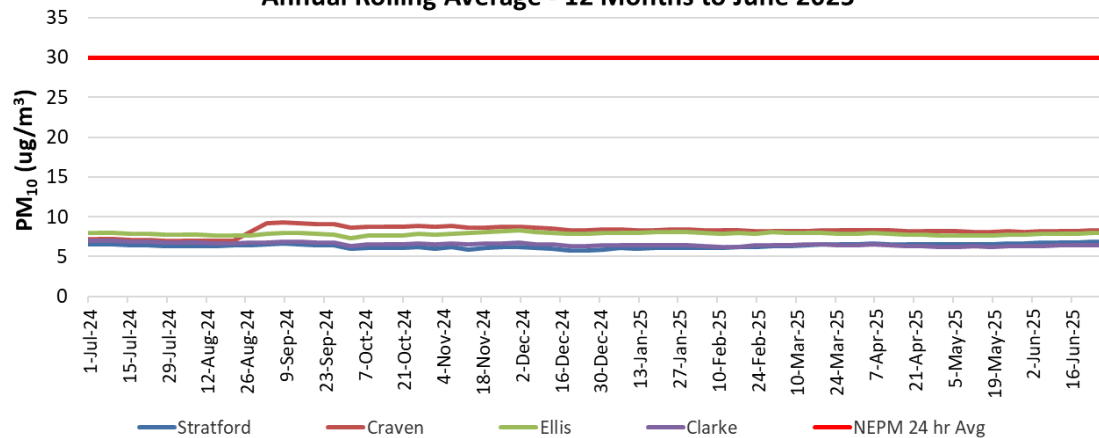
Management Area	Project	Status
Air Quality Monitoring	<ul style="list-style-type: none">Real-time air quality monitoring	<ul style="list-style-type: none">The real-time air quality TEOM monitors in Stratford and Craven villages continue to operate.Generally good overall regional air quality. All sites below limit (50ug/m³) except for Craven HVD2 which was impacted by adjacent demolition work over two weeks (August/September 2024).HVAS results provide more reliable data compared to dust deposition results and should be referred to when interpreting dust emissions.The real-time air quality management system analyses data from the TEOM units and records times when the air quality criteria is likely to be exceeded. The system will then provide alarms to staff to implement additional dust mitigation measures where required.No triggers have been received relating to mining operations.

3a. Air Quality Management

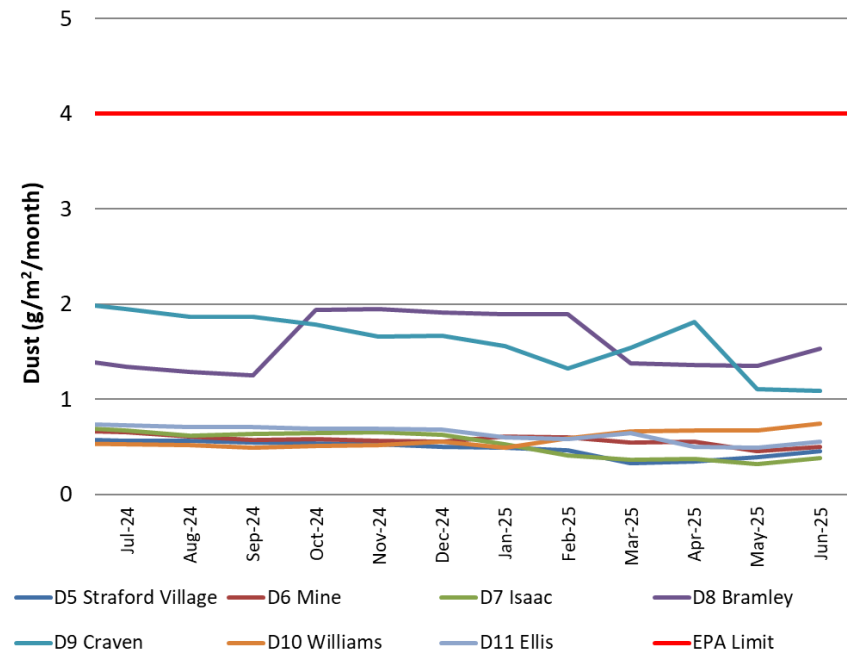
Stratford HVAS Monitoring - Particulate Matter (PM₁₀)
12 Months to June 2025



Stratford HVAS Monitoring (PM₁₀)
Annual Rolling Average - 12 Months to June 2025



Stratford Dust Deposition - Annual Rolling Average
12 Months to June 2025



3b. Noise Management

Management Area	Project	Status
Monitoring	<ul style="list-style-type: none"> Monthly Noise Survey Sound Power Monitoring Night-Time Noise Compliance Review Noise Model Verification 	<ul style="list-style-type: none"> Six monthly attended noise monitoring rounds were undertaken during Q1 and Q2 2025. No non-compliant results were recorded. Reports are available on the Stratford Coal website. The next monitoring round is scheduled for August 2025. Sound Power Level Monitoring of the mobile plant fleet has been scheduled for Q4 2025. The biennial independent review of night-time noise results has commenced. The results will be reported in the 2025 Annual Review. Biennial noise model validation and any required updates are scheduled for Q4 2025. Results will be reported in the 2025 Annual Review.
Real-Time Noise	<ul style="list-style-type: none"> Real-Time Noise System 	<ul style="list-style-type: none"> Real-time noise monitors continue to operate near Stratford Village and Craven Village. The integrated real-time noise management analyses data from the noise units, the weather station and the inversion towers and records times when either the noise criteria is likely to be exceeded or when noise enhancing weather conditions are present. The system provides alarms to staff to implement additional noise mitigation measures where required.

3c. Water Management

Management Area	Project	Status
Water Management	<ul style="list-style-type: none"> Avon North and Stratford East Pit Pumping 	<ul style="list-style-type: none"> Stratford East Pit has been dewatered following the May rain event. Water transfers to Avon North from Old Main Pit (OMP) and Roseville West.
Surface Water Monitoring	<ul style="list-style-type: none"> Routine monitoring 	<ul style="list-style-type: none"> Routine and rain-event sampling has continued. All results consistent with the SMC Environmental Assessment predictions. Above average rainfall was received during Q1 and Q2 2025. Between 1 January 2025 and 30 June 2025 Stratford has received 1330mm of rainfall, exceeding the annual average of 965mm (37.8% increase YTD).
Flood Event	<ul style="list-style-type: none"> Stratford East Dam (SED) Emergency Release Uncontrolled Discharges 	<ul style="list-style-type: none"> Daily release limit of 25ML, 1041ML released to 31 July 2025. Release approved until 5pm on 30 August 2025. During the May flood event uncontrolled discharges occurred from SD16 and Stratford East Dam. PIRMP was enacted and both incidents reported to the EPA. EPA advised that reporting requirements for pollution events resulting directly from this event were waived. No further action is required.



Plate 1: Avon North Pit Water Storage, looking south
December 2024

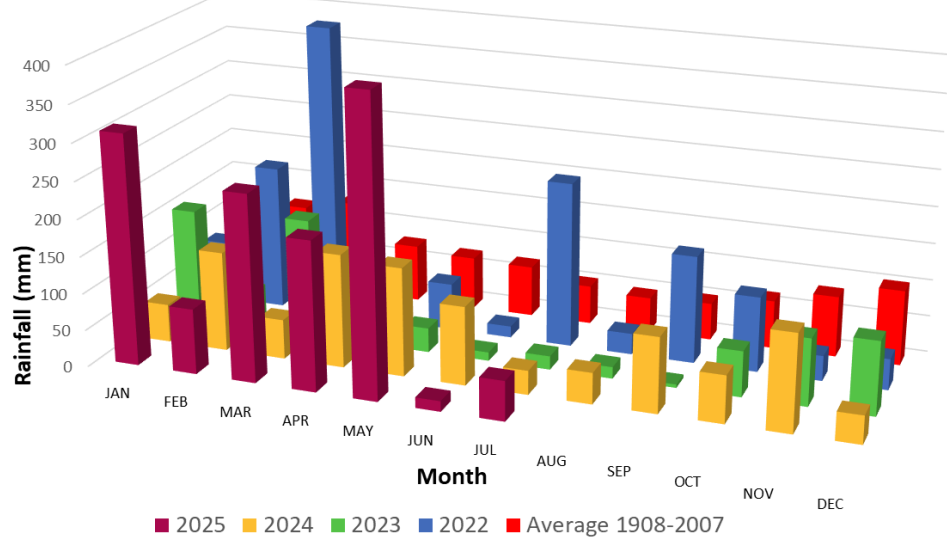


Plate 2: Avon North Pit Water Storage, looking south
June 2025

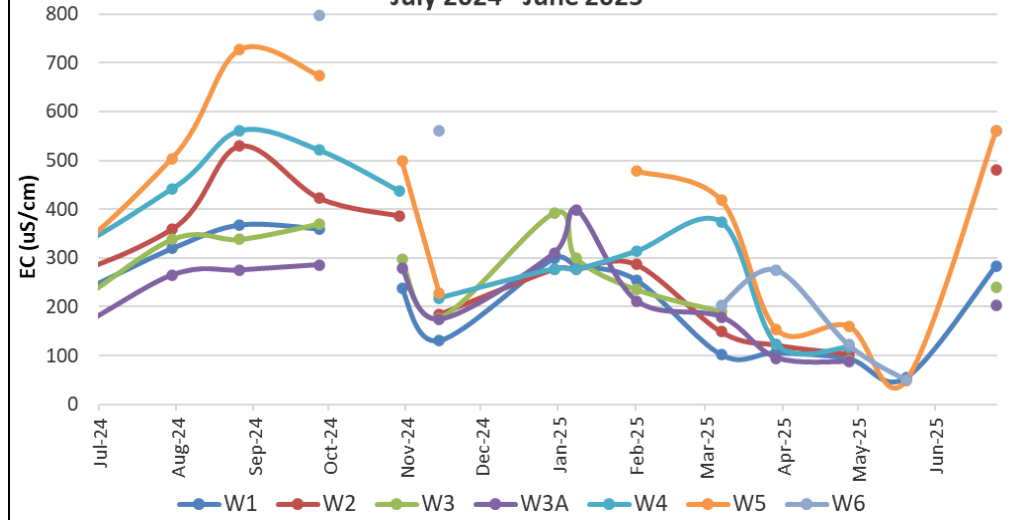
3c. Water Management

Note: Gaps in data are due to monitoring sites having no flow

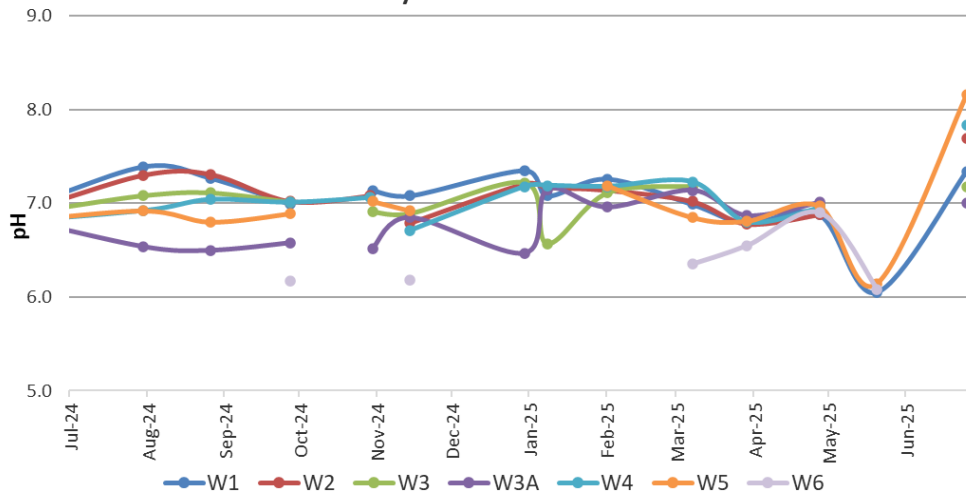
Stratford Mining Complex - Monthly Rainfall



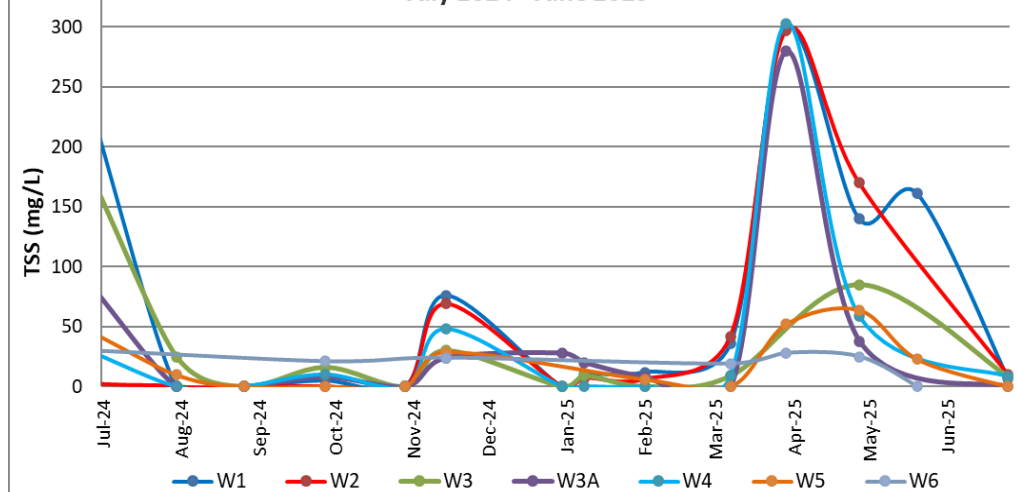
Electrical Conductivity (EC) - Avon River & Avondale Creek
July 2024 - June 2025



pH - Avon River & Avondale Creek
July 2024 - June 2025



Total Suspended Solids (mg/L) - Avon River & Avondale Creek
July 2024 - June 2025



3c. Water Management

Stratford "Old" Main Pit Water Quality
12 months to June 2025

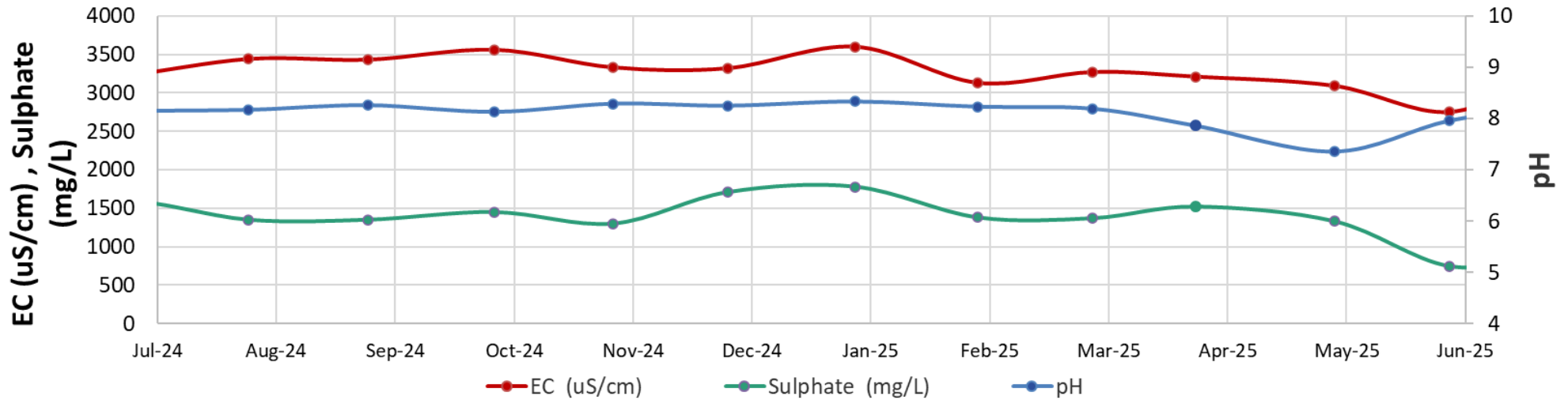


Plate 3: Stratford Old Main Pit, December 2024



Plate 4: Stratford Old Main Pit, July 2025



3d. Rehabilitation and Biodiversity Management

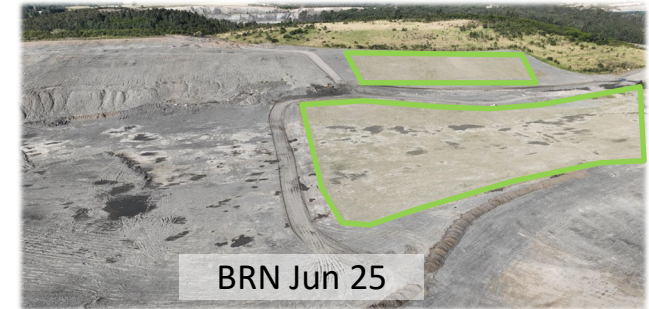
Management Area	Project	Status
Rehabilitated Waste Emplacements	<ul style="list-style-type: none"> Backfilling and bulk-shaping 	<ul style="list-style-type: none"> Backfilling of Stratford East Pit continued with dumping of Codam, PAF and NAF material throughout the first half of 2025. Bulk shaping in Avon North commenced to prepare the landform for rehabilitation. 7ha Autumn topsoiling seeding completed in BRN Topsoiling and seeding commenced in AVN and BRN ahead of Spring seeding.
Monitoring	<ul style="list-style-type: none"> Vegetation Monitoring - Ecosystem Function Analysis 	<ul style="list-style-type: none"> Rehabilitation monitoring incorporating landscape function analysis and vegetation dynamics was completed in June 2025. A summary of the results will be included in the 2025 Annual Review.
Weed Management	<ul style="list-style-type: none"> Stratford Waste Emplacement 	<ul style="list-style-type: none"> Higher than average rainfall impacted the 2024/25 spraying season. Manual weed removal recommended in Winter with a focus on the BRN rehabilitation area.



BRN Jun 24



BRN Oct 24



BRN Jun 25

Plate 5: BRN Rehab Progression

3e. Biodiversity Management

Management Area	Project	Status
Biodiversity Offset Area	<ul style="list-style-type: none">Revegetation Works	<ul style="list-style-type: none">Planning is underway for the 2025 planting program which is expected to commence in Spring 2025. The 2025 program will focus on infill planting areas of lower density areas.
Nest Box Program	<ul style="list-style-type: none">Nest Box Monitoring	<ul style="list-style-type: none">The 2024 nest box monitoring found 200 out of the inspected 202 nest boxes were occupied or showed signs of occupancy.Next round of nest box monitoring is scheduled for Q4 2025.



Plate 1: Sugar Gliders, *Petaurus breviceps*, in a Eucalypt nest
October 2024



Plate 2: Lace Monitor, *Varanus varius*
October 2024

4. Mine Closure – Timeline



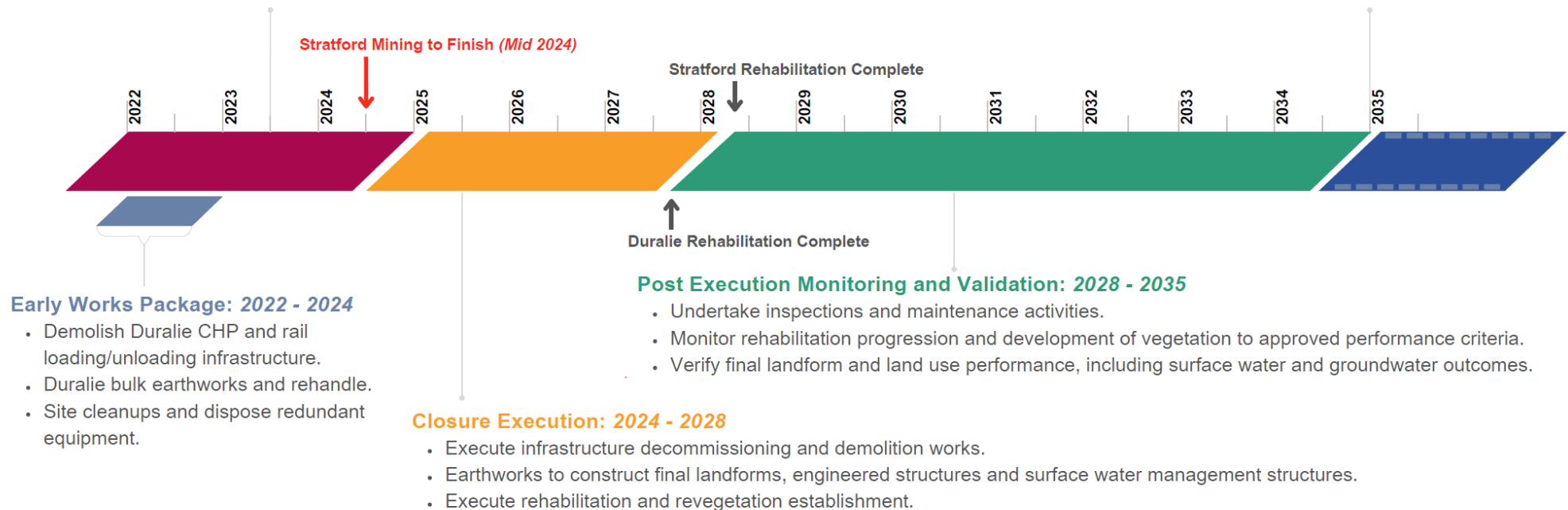
Indicative Stratford and Duralie Timeline

Detailed Mine Closure Planning: 2022 - 2025

- Undertake detailed investigations and design to define the "Go Forward" closure plan.
- Confirm rehabilitation/closure performance objectives and criteria with regulators and Yancoal internal stakeholders.

Lease Relinquishment: 2035 Onward

- Execute rehabilitation signoff process.
- Demonstrate all regulatory obligations have been met to surrender consents, mining leases and licences.
- Post mining land use and property divestment.



4. Mine Closure Planning

Aspect	Status
General	<ul style="list-style-type: none">• Detailed Mine Closure studies expected to be completed in Q3 2025• Detailed Mine Closure Plan will inform closure execution works• Consent (SSD_4966) and Mining Leases continue to be in force until the site is rehabilitated to the satisfaction of DPHI and Resources Regulator
Rehabilitation	<ul style="list-style-type: none">• Final Landform and Rehabilitation Plans (FLRP) will be revised following completion of Detailed Mine Closure Plan – Preparation in Q4 2025• Yancoal and the Resources Regulator acknowledge that the currently proposed landforms may change as the closure planning evolves
Environmental Management, Monitoring & Maintenance	<ul style="list-style-type: none">• Preparation of Environmental Management Plan and Rehabilitation Management Plan revisions to continue through 2025 considering Mine Closure studies and reflecting stage of operations.
Stakeholder and Community	<ul style="list-style-type: none">• Communications with the workforce, CCC and other stakeholders will continue throughout closure• Closure updates to the CCC will continue to be provided

4. Mine Closure Planning

Aspect	Status
Final land use	<ul style="list-style-type: none">• The target post-mining land uses are agricultural grazing, native vegetation and water bodies
Final Landforms	<ul style="list-style-type: none">• Landform refinements are continuing as part of the on-going mine closure planning• Refinements are iterative, consider mine planning, landform stability, landscape evolution modelling, geochemistry and water management
Final Voids	<ul style="list-style-type: none">• Final void design prepared for Avon North, Roseville West and Stratford Old Main Pit
Water	<ul style="list-style-type: none">• Water management and prediction are progressively being revised for rehabilitation and post rehabilitation phases• Considerations include water storages, diversions, drainage construction, rehabilitation sequencing and erosion and sediment control
Infrastructure	<ul style="list-style-type: none">• Planning for the Rail Loop removal is in progress (disconnection is complete)• Infrastructure will be progressively decommissioned where not required to support closure works• Infrastructure to be retained will be subject to approval by the Resources Regulator

5. Community Complaints - Summary

Stratford Complaint Summary

Period: 1/01/2025 - 30/06/2025

Period: 6 Months

Total No. of Complaints: 1

Total No. of Complainants: 1

Date/Time of Complaint	Complainant Location	Method of Complaint	Nature of Complaint	Investigation/Outcome
15/04/2025	2.5km West of SCPL	Direct to TK mobile	Noise	<ul style="list-style-type: none">• Complainant called Environment & Community Superintendent (ECS) mobile phone directly at 10:04am 15/4/2025• The Complainant stated the dozer track slap and engine noise was noted between 10:00pm and 10:30pm on 14/4/2025. The Complainant explained the noise as coming from the general direction of the Roseville West/Bowens Rd North pit areas and was more intrusive than experienced before. It was noted that track slap was audible over the tv with the doors closed.• ECS detailed the operational activities at the time of complaint and committed to further investigating the source of the noise.• The Complainant also noted generally noise had been louder over the past month or so. Noting truck noise and other machinery noise that hadn't previously been heard.• ECS discussed some of the recent operational noise management mitigations implemented by the operational team and the upcoming plans for works at the SMC.• ECS Discussed the details of the complaint with SMC Production Superintendent who identified the likely cause of the noise to be the dump dozer on RVW crest dump. Production Superintendent agreed to further communicate maximum dozer gear with Operators.

6. Community Programs

Management Area	Project	Status
Support Programs	Stratford Coal Community Support Program (CSP)	<ul style="list-style-type: none"> Applications for the 2026 Community Support Program will re-open on Monday 18th August 2025 and close on Friday 26th September 2025. The CCC, previous applicants and the wider community will be notified via Email, social media, newsletters and community notice boards. The CSP guidelines prioritise projects that support the community's socio-economic transition.
	Stratford Coal Education Support Fund	<ul style="list-style-type: none"> The Stratford Coal Education Support Fund will be running again during 2025/26, applications will be made available online from the Stratford Coal website. Applications will open on Monday 17th November 2025 and close on Friday 30th January 2026.



NEED FUNDING TO HELP IMPROVE OUR LOCAL COMMUNITY?

Yancoal Community Support Program call for applications

Stratford Duralie Coal Mine is a proud and active member of the Local community. Yancoal's 2025 Community Support Program offers community groups the opportunity to apply for funding to support projects, events and initiatives that help make a genuine positive difference to Gloucester, Stroud and District.

If you have a project or idea with the potential to benefit others across the areas of health, community, environment, arts, culture, education or training, please visit: www.stratfordcoal.com.au or www.duraliecoal.com.au



7. Recruitment Update

- A recruitment process commenced in June to support ongoing mine closure activities at Duralie.
- Positions include Mining and Maintenance Supervisors, Mining Operators, and Plant Mechanics.
- Preferred candidates are currently progressing through pre-employment testing and issue of offers.
- A staged induction program for new employees will commence in early September.
- Additional mine closure works at Duralie are expected to begin around mid-September.



DURALIE COAL MINE

Closure and Rehabilitation Update

Since coal extraction ceased at Duralie in December 2021, the site has been subject to ongoing closure works including rehandling material, infrastructure decommissioning, monitoring, maintenance, and continuing rehabilitation works. In parallel, a series of technical studies are being completed to inform closure planning and further rehabilitation.

In coming months bulk earthworks will recommence at Duralie as part of the mine's final rehabilitation phase. These works involve the rehandling and reshaping of materials to deliver the final landform and achieve the agreed environmental outcomes for the site. Once the final landform is complete, rehabilitation monitoring and maintenance will continue until all mining leases are relinquished.

Recruitment

To support this important stage of mine closure, Yancoal is actively recruiting for a range of roles.

Opportunities include

- Maintenance Supervisor
- Mining Operators
- Plant Mechanic (Maintenance Technician)

Apply now
Recruitment is currently underway, with roles advertised on Seek and the Yancoal website.

Want to know more?



Visit the Yancoal website for further information.

Community Engagement

Yancoal is committed to keeping the local community informed, with transparent and ongoing communication continuing throughout the closure and rehabilitation process.

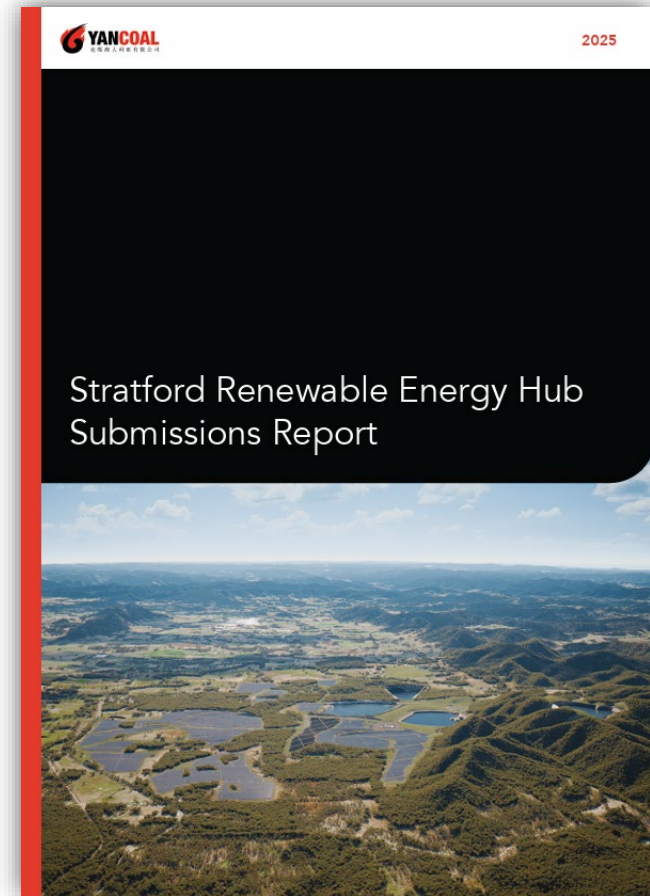
CONTACT US
Community information hotline: 1300 658 239

yancoal.com.au/careers



8. Stratford Renewable Energy Hub - Update

- In May 2025, Yancoal submitted a Response to Submissions Report. This Report responds to comments raised by both the public and government agencies during exhibition of the EIS.
- Government agencies have since provided comments on the Submissions Report and Yancoal is currently preparing additional information to address these comments.
- The Department will then use this additional information to inform and finalise its assessment.
- The Minister for Planning and Public Spaces will ultimately determine the project.



More information can be found on the project website www.stratfordrenewableenergyhub.com.au (above) or NSW DPHI's website www.planningportal.nsw.gov.au/major-projects/projects/stratford-pumped-hydro-and-solar-0