



**NSW
Resources
Regulator**

FWP0001709

AUSTAR COAL MINE FORWARD PROGRAM

Tuesday 1 July 2025 to Friday 30 June 2028



Summary

DETAIL

Mine	Austar Coal Mine
Reference	FWP0001709
Forward program commencement date	Tuesday 1 July 2025
Forward program end date	Friday 30 June 2028
Forward program revision (if applicable)	
Contact	Carly McCormack
Mining leases	ML 1345 (1992), ML 1677 (1992), ML 1283 (1906), ML 1157 (1906), ML 1666 (1992), MPL 23 (1906), MPL 204 (1906), DSL 89 (1901), MPL 233 (1906), MPL 1364 (1906), ML 1851 (1992), ML 1661 (1992), MPL 269 (1906), CCL 752 (1973), ML 1550 (1992), MPL 217 (1906), CML 2 (1992), CCL 728 (1973), ML 1388 (1992)
Project location	Austar Coal Mine Pty Limited
Date of submission	Thursday 25 September 2025

Important

The department may make the information in your program and any supporting information available for inspection by members of the public, including by publication on its website or by displaying the information at any of its offices. If you consider any part of your program to be confidential, please communicate this to the department via the message function on this submission within the NSW Resources Regulator Portal.

Three-year forecast – surface disturbance activities

Project description

Austar Coal Mine is a closed underground coal mine located approximately 10 km southwest of Cessnock in the Lower Hunter Valley in NSW. Austar Coal Mine incorporates the former Pelton, Ellalong, Cessnock No. 1 (Kalingo) and Bellbird South Collieries and includes coal extraction, handling, processing and rail and road transport facilities. Pit top facilities are located on Middle Road, Paxton, and the Coal Handling and Preparation Plant (CHPP) is located at Wollombi Road, Pelton. Mining is approved under two major project approvals: Bellbird South (DA 29/95) and Stage 3 (PA 08_0111), along with numerous development approvals from Cessnock City Council. DA 29/95 expired on 14 February 2022 whilst PA 08_0111 expires on 31 December 2030. Austar is currently in the closure planning stage with investigations and studies being undertaken to inform the closure process. Early works closure activities are being undertaken including mine sealing, decommissioning and demolition.

Description of surface disturbance activities

Exploration activities

Exploration activities will be undertaken in accordance with the proposed work program under EL6598. Works over the next two years will progress borehole rehabilitation in EL6598 to achieve rehabilitation sign-off prior to the expiry of EL6598 in July 2027. Progressive assessment and sealing of historic exploration boreholes will continue throughout the next three-year period in EL6598 and other mining tenements as required. Progressive assessment and sealing of tailings boreholes is scheduled to commence in year 1-2 and be ongoing during the next three-year period.

Construction activities

No construction activities are proposed in the next three years.

Mining schedule

Mining development method and sequencing and general mine features.

Austar is a closed mine; there will be no mining operations in the next three-year period. All activities will be associated with rehabilitation and closure planning, and early works including mine sealing, decommissioning, equipment recovery and demolition.

Areas identified for emplacements, the sequencing of emplacements, construction, and management.

and management. (1500 characters) Austar is a closed mine, no additional mining related overburden, coarse coal rejects or fine tailings will be generated in the next three-year period. During operations, coarse coal rejects and/or fine tailings were historically placed in approved emplacement areas at the Pelton CHPP, Aberdare Extended Emplacement Area and Bellbird Areas 12 and 13. Technical assessments to refine final landform designs (including capping specifications) for these emplacement areas are continuing. General maintenance and management works will be undertaken on existing emplacement areas as required including erosion repairs, geotechnical monitoring and testing. Desilting of the Austar Dam may commence during year 1-2 of the forward program period. Sediments from Austar Dam will be emplaced in the East Pit emplacement area at the Pelton CHPP for capping in the final landform. Other mine dams may also be desilted and emplaced in East Pit as required.

Processing infrastructure activities and the location of tailings facilities and schedule for emplacement.

Austar is a closed mine; there is no material processing or tailings emplacement proposed in the next three year period. All processing infrastructure at the Pelton CHPP has been decommissioned and is being demolished. Austar has two tailings facilities, being the North-West Tailings Dam (NWTD) and No. 9 Tailings Dam. No tailings has been placed in either the NWTD or No. 9 Tailings Dam since Yancoal acquired Austar in 2004. Austar are undertaking site investigations to confirm the historic construction of these tailings dams and to refine conceptual capping and closure designs. Ongoing tailings dam investigations will continue in year 1 of the forward program period. Coal waste blending field trials of tailings and coarse coal reject materials commenced in July 2025 and will be ongoing in year 1 to inform materials handling and placement through execution of bulk earthworks. Tailings has been stored in underground workings since Yancoal acquired Austar in 2004. Progressive rehabilitation of tailings boreholes will commence in Year 1-2 and continue through the term of the Forward Program. As part of closure planning, Austar is also reviewing options to reprocess or consolidate tailings material to optimise capping requirements and improve closure outcomes. Should this be determined to be a feasible option this will be reported in future FPs.

Waste disposal and materials handling operations.

Waste management activities are conducted in accordance with the Austar Closure Waste Management Plan (CWMP). General waste is managed by a licensed waste contractor who provides Austar with monthly reports detailing the types and quantities of waste removed. Demolition waste is managed by the demolition contractor in accordance with the CWMP. The demolition contractor will separate demolition waste into designated streams in line with the CWMP for appropriate disposal, recycling, or beneficial reuse. Demolition materials, such as aggregate (concrete and brick) and reclaimed asphalt pavement, will be stockpiled and tested to assess suitability for beneficial reuse as fill material for mine shafts. Subject to approval, rail ballast from the heritage-listed rail line may be recovered and used for mine shaft filling over the next three years. Hazardous materials will be removed by a licensed contractor during

demolition and disposed of at an appropriately licensed facility. Contamination assessments have not identified significant soil contamination requiring specific management. Any contaminated soils discovered during demolition will be classified and either placed in an approved emplacement area or transported to a licensed offsite disposal facility. Mineral wastes and excavated dam sediments will be placed in approved emplacement areas and capped together with reject and tailings material as part of the final landform design.

Key production milestones

MATERIAL	UNIT	YEAR 1	YEAR 2	YEAR 3
Stripped topsoil (if applicable)	(m ³)	0	0	0
Rock/overburden	(m ³)	0	0	0
Ore	(Mt)	0	0	0
Reject material ¹	(Mt)	0	0	0
Product	(Mt)	0	0	0

¹ This includes coarse rejects, tailings and any other wastes resulting from beneficiation.

Three-year rehabilitation forecast

Rehabilitation planning schedule

Rehabilitation planning schedule

Austar's indicative closure planning timeline including key closure milestones is published on the Austar website. Austar commenced a Feasibility Study (FS) in March 2024 including detailed investigations and technical studies to prove up the preferred rehabilitation and closure options and refine conceptual landform designs and final land use(s). The ongoing geotechnical, geochemical, contamination and hydrological studies will inform the development of detailed final landform designs. Final landform designs will be refined based on landform modelling as required to achieve closure outcomes. The FS will be ongoing during year 1 and is scheduled for completion in mid-2026 (year 2). FS will be followed by detailed engineering and executable designs and then commencement of final landform earthworks. During the FP period, Austar will progress an SSD modification approval to execute the preferred closure option, including final landform design changes where required. The SSD modification application will include key supporting technical assessments.

Stakeholder consultation

Stakeholder consultation will continue to be undertaken in line with the previous year's consultation activities, including quarterly Resource Regulator updates, six monthly multiagency (NSW Resources Regulator, DPHI and EPA) and annual Community Consultative Committee meetings. Liaison is ongoing with Cessnock City Council regarding synergies between Austar closure and Council projects. Other consulted parties may include NSW Crown Land, Rural Fire Service and impacted landholders as required. Near neighbours will be notified of any potential noise impacts during the demolition program. Consultation with DPHI will commence during year one of the FP period regarding the SSD modifications required to execute the preferred closure option.

Rehabilitation studies, risk assessments and/or design work

Technical studies being undertaken in the FS include:

- Geotechnical, geophysical and geochemical studies to advance rejects and tailings management, and landform and capping designs.
- Material characterisation investigations to confirm that adequate volumes of suitable capping material are available on site.
- Geotechnical studies to improve the understanding of mine subsidence (land stability) hazards including sinkholes and confirm historic mine entry sealing requirements.
- Hydrological assessments to inform the development of the final landform and the transition from a closed mine water catchment to a free draining rehabilitated landform.
- Contamination studies to inform management and disposal of contaminated materials.
- The Rehabilitation Operations Manual and a Growth

Media Strategy for rehabilitation will be finalised and implemented during the first year of the Forward Program. Detailed landform design will be developed based on the outcomes of these assessments and will incorporate 3D landform modelling, stability and seepage modelling and landform evolution modelling to demonstrate that the final landform arrangement will be stable and not present a risk of environmental harm in the long term. A final risk assessment will be undertaken at the completion of FS to ensure that the detailed closure designs and controls adequately address closure risks. Detailed engineering and planning will be undertaken during year 2-3 of the FP at the conclusion of FS

Rehabilitation research and trials

AUSTAR COAL MINE FORWARD PROGRAM

FWP0001709 | Tuesday 1 July 2025 to Friday 30 June 2028

RRT NUMBER	PROJECT/TRIAL NAME	OBJECTIVE OF TRIAL/PROJECT	METHODOLOGY	EXPECTED DATE OF COMPLETION	STATUS
RRT0001111	Growth medium trial	Evaluation of composted municipal green waste material as a growth medium, as an alternative to topsoil.	Three rehabilitation trial plots to be established. One plot to have no compost, second plot to have 50mm of composted growth medium and the third plot to have 100mm of composted growth medium. Soil testing will be used to inform amelioration requirements. All three plots will be seeded with key canopy, shrub and groundcover species of the Lower Hunter Spotted Gum Ironbark Forest vegetation community. Ongoing monitoring will inform suitability of compost use as a growth medium.	31 Dec 2025	Ongoing
RRT0001130	Growth Medium Trial	Evaluation of composted municipal green waste material as a growth medium, as an alternative to topsoil.	Three rehabilitation trial plots have been established. Plot 1 has no compost, Plot 2 has 50mm of composted growth medium Plot 3 has 100mm of composted growth medium. Soil testing will be used to inform amelioration requirements. All three plots will be seeded with key canopy, shrub and groundcover species of the Lower Hunter Spotted Gum Ironbark Forest vegetation community and a cover crop. Ongoing monitoring will inform suitability of compost use as a growth medium.	31 Dec 2025	Ongoing

RRT NUMBER	PROJECT/TRIAL NAME	OBJECTIVE OF TRIAL/PROJECT	METHODOLOGY	EXPECTED DATE OF COMPLETION	STATUS
RRT0001155	Coal Waste Blending Trial	To inform materials handling, excavation, blending and placement strategies through the execution of bulk earthworks, with a focus on optimising processes for tailings and coarse coal reject (CCR) man	Tailings will be excavated from the NWTd, dewatered as required, and transported to a trial location at the CHPP. Materials will be spread or blended with coarse coal reject (CCR) to evaluate drying rates, handling behaviour, and suitability for placement in containment cells. Observations, geotechnical testing, and laboratory analysis will be conducted to optimize processes.	30 Jun 2026	Ongoing

Rehabilitation maintenance and corrective actions

The rehabilitation monitoring program outlined in the RMP is used to identify any maintenance and corrective actions required. Outcomes of rehabilitation monitoring including recommendations for further works to achieve the specific closure criteria are documented in the annual rehabilitation monitoring report. In accordance with recommendations from the annual rehabilitation monitoring report, the following rehabilitation maintenance activities will be scheduled during the FP period:

- Ongoing weed management of the rehabilitation areas at Aberdare Extended Emplacement Area (EEA), Bellbird Areas 12 and 13 and the Cessnock No.1 Colliery/Kalingo Infrastructure Area. Supplementary plantings will be considered if weed management results in bare spaces in rehabilitation.
- Continued prevention of unauthorised access including installation of concrete blocks in areas where unauthorised access is prevalent, including Aberdare EEA and Bellbird rehabilitation areas.
- Remediation of vehicle damage and dirt bike paths caused by trespassers through rehabilitated areas in the Aberdare EEA
- Review of seed mixes for future rehabilitation.
- Rubbish removal where required.

Recommendations of rehabilitation monitoring and inspections will be implemented throughout the FP as required.

Rehabilitation schedule

Demolition of non-heritage mining infrastructure, including the removal of concrete slabs and some asphalt hard stands (e.g. car parks and access roads), will continue during the forward program period. Demolition in year 1 will include finalising CHPP demolition then progressing to Pit Top, and No. 1 Shaft. It is anticipated that demolition of No. 2 Shaft will commence in Year 2. Removal of redundant overhead powerlines at No. 1 and No. 2 Shaft will be completed in year 1-2. Rehabilitation of tailings and exploration boreholes will occur progressively throughout the Forward Program period, commencing in Year 1. Mine shaft filling and sealing is scheduled to commence during the FP period. Backfilling and demolition of No. 1 Shaft is scheduled to commence in year 1 and No. 5 and No. 6 Shafts in year 2. The shafts will be progressively filled with inert demolition materials and/or rail ballast as material becomes available. During year 1, the Kalingo Dam wall will be removed and the dam de-declared. Following dam wall removal, earthworks will be completed to develop the final landform and the dam footprint will be revegetated. A sediment dam will be retained in the dam footprint until the rehabilitation is deemed complete. In year 1, Austar will seed completed demolition areas at the Kalingo Infrastructure Area (KIA, No. 3 Shaft) to stabilise them until final landform works are carried out. Austar Dam desilting and validation may commence during the Forward Program period.

Completion of rehabilitation

No areas are proposed for rehabilitation completion in the next 3 year period.

Subsidence remediation for underground operations

Subsidence monitoring of Austar underground mining areas completed under Austar's two State Significant Development Consents (Bellbird South (DA 29/95) and Stage 3 (PA 08_0111)) is complete and no further impacts or required remediation is expected. Sinkholes in historic, non-active mining areas that have developed in historic shallow mine workings in CML 2 (east of Wollombi Road at Bellbird and West Cessnock) will continue to be monitored and repaired where required in collaboration with Subsidence Advisory NSW.

Progressive mining and rehabilitation statistics

Three-yearly forecast cumulative disturbance and rehabilitation progression

	FORECAST	UNIT	YEAR 1	YEAR 2	YEAR 3
A1	Total disturbance footprint - surface disturbance	(ha)	214.86	214.86	214.86
B	Total active disturbance	(ha)	150.89	149.49	149.49
P	Total new area of land proposed for active rehabilitation	(ha)	2.9	4.3	4.3

Rehabilitation key performance indicators (KPIs)

	FORECAST	UNIT	YEAR 1	YEAR 2	YEAR 3
O	Total new disturbance area during reporting period	(ha)			
P	Total new area of land proposed for rehabilitation during the reporting period	(ha)	2.9	1.41	
Q	Annual rehabilitation to disturbance ratio				

Attachment 1 – Reporting Definitions

REPORTING CATEGORY		DEFINITION
A	Total disturbance footprint – surface disturbance	<p>All areas within a mining lease that either have at some point in time or continue to pose a rehabilitation liability due to surface disturbance activities.</p> <p>The total disturbance footprint is the sum of the total active disturbance, decommissioning, landform establishment, growth medium development, ecosystem and land use establishment, ecosystem and land use development and rehabilitation completion (see definitions below).</p> <p>Underground mining operations should not include the footprint of underground mining areas/subsidence management areas in the total disturbance footprint.</p>
B	Total active disturbance	<p>Includes on-lease exploration areas, stripped areas ahead of mining, infrastructure areas, water management infrastructure, sewage treatment facilities, topsoil stockpile areas, access tracks and haul roads, active mining areas, waste rock emplacements (active/unshaped/in or out-of-pit), tailings dams (active/unshaped/uncapped) and temporary stabilised areas (e.g. areas sown with temporary cover crops for dust mitigation and temporary rehabilitation).</p>
C	Rehabilitation – land preparation	<p>Includes the sum of all disturbed land within a mining lease that have commenced any, or all, of the following phases of rehabilitation – decommissioning, landform establishment and growth medium development.</p> <p>Refer to the glossary of terms in this document for the definition of these phases of rehabilitation.</p>
D	Ecosystem and land use establishment	<p>Includes the area which has been seeded/planted with the target vegetation species for the intended final land use. However, vegetation has not matured to a stage where it can be demonstrated that it will be sustainable for the long term and or require only a maintenance regime consistent with target reference/analogue sites.</p> <p>Typically, rehabilitation areas would be in this phase for at least two years (and usually more) before rehabilitation can be classified as being in the ecosystem and land use development phase. This phase does not apply to infrastructure areas that are being retained as part of final land use for the site.</p>

REPORTING CATEGORY	DEFINITION
O	The area of any new active disturbance that will be created during the next three years, as defined under definition A1 (definition A1 Table 5).
P	The sum of any new rehabilitation to be commenced in the next three years. These areas may be in the phases “Rehabilitation - Land Preparation” or the “Ecosystem & Land Use Establishment” (definitions C & D in Table 5).
Q	The rehabilitation to disturbance ratio (S / R) indicates how many hectares of new rehabilitation are undertaken for each hectare of land disturbed during the three years. A ratio of 1/1 indicates that the area of new rehabilitation and disturbance in that period are the same.

Attachment 2 – Definitions

WORD	DEFINITION
Active	In the context of rehabilitation, land associated with mining domains is considered 'active' for the period following disturbance until the commencement of rehabilitation.
Active mining phase of rehabilitation	In the context of rehabilitation, the active mining phase of rehabilitation constitutes the rehabilitation activities undertaken during mining operations such as salvaging and managing soil resources, salvaging habitat resources, and native seed collection. This phase also includes management actions taken during operations to manage risks to rehabilitation and enhance rehabilitation outcomes such as selective handling of waste rock and management of tailings emplacements.
Analogue site	In the context of rehabilitation, an analogue site is a 'reference site' that represents an example of the defining characteristics (such as vegetation composition and structure or agricultural productivity) of the final land use. Characteristics of analogue sites can be assessed to develop the rehabilitation objectives and completion criteria for final land use domains.
Annual rehabilitation report and forward program	As described in the Mining Regulation 2016.
Annual reporting period	As defined in the Mining Regulation 2016.
Closure	A whole-of-mine-life process, which typically culminates in the relinquishment of the mining lease. It includes decommissioning and rehabilitation to achieve the approved final land use(s).
Decommissioning	The process of removing mining infrastructure and removing contaminants and hazardous materials.
Decommissioning Phase of Rehabilitation	Activities associated with the removal of mining infrastructure and removal and/or remediation of contaminants and hazardous materials. In the context of the rehabilitation management plan this phase of rehabilitation may also include studies and assessments associated with decommissioning and demolition of infrastructure or works carried out to make safe or 'fit for purpose' built infrastructure to be retained for future use(s) following lease relinquishment.

WORD	DEFINITION
Department	The Department of Regional NSW.
Disturbance	See Surface Disturbance.
Disturbance area	<p>An area that has been disturbed and that requires rehabilitation.</p> <p>This may include areas such as on-licence exploration areas, stripped areas ahead of mining, infrastructure areas, water management infrastructure, sewage treatment facilities, topsoil stockpile areas, access tracks and haul roads, active mining areas, waste emplacements (active/unshaped/in or out-of-pit), tailings dams (active/unshaped/uncapped), and areas requiring rehabilitation that are temporarily stabilised (i.e. managed to minimise dust generation and/or erosion).</p>
Domain	<p>An area (or areas) of the land that has been disturbed by mining and has a specific operational use (mining domain) or specific final land use (final land use domain). Land within a domain typically has similar geochemical and/or geophysical characteristics and therefore requires specific rehabilitation activities to achieve the associated final land use.</p>
Ecosystem and Land Use Development	<p>This phase of rehabilitation consists of the activities to manage maturing rehabilitation areas on a trajectory to achieving the approved rehabilitation objectives and completion criteria.</p> <p>For vegetated land uses this phase may include processes to develop characteristics of functional self-sustaining ecosystems, such as nutrient recycling, vegetation flowering and reproduction, and increasing habitat complexity, and development of a productive, self-sustaining soil profile.</p> <p>This phase of rehabilitation may include specific vegetation management strategies and maintenance such as tree thinning, supplementary plantings and weed management.</p>
Ecosystem and Land Use Establishment	<p>This phase of rehabilitation consists of the processes to establish the approved final land use following construction of the final landform.</p> <p>For vegetated land uses this rehabilitation phase includes establishing the desired vegetation community and implementing land management activities such as weed control. This phase of rehabilitation may also include habitat augmentation such as installation of nest boxes.</p>
Exploration	Has the same meaning as that term under the State Environmental Planning Policy (Mining, Petroleum Production and Extractive Industries) 2007.

WORD	DEFINITION
Final landform and rehabilitation plan	As defined in the Mining Regulation 2016.
Final land use	As defined in the Mining Regulation 2016.
Form and way	Means the form and way approved by the Secretary. Approved form and way documents are available on the Department's website.
Growth Medium Development	<p>This phase of rehabilitation consists of activities required to establish the physical, chemical and biological components of the substrate required to establish the desired vegetation community (including short lived pioneer species).</p> <p>This phase may include spreading the prepared landform with topsoil and/or subsoil and/or soil substitutes, applying soil ameliorants to enhance the physical, chemical and biological characteristics of the growth media, and actions to minimise loss of growth media due to erosion.</p>
Habitat	Has the same meaning as that term under the <i>Biodiversity Conservation Act 2016</i> and the <i>Fisheries Management Act 1994</i> (as relevant).
Indicator	An attribute of the biophysical environment (e.g. pH, topsoil depth, biomass) that can be used to approximate the progression of a biophysical process. It can be measured and audited to demonstrate (and track) the progress of an aspect of rehabilitation towards a desired completion criterion (i.e. defined end point). It may be aligned to an established protocol and used to evaluate changes in a system.
Land	As defined in the <i>Mining Act 1992</i> .
Landform Establishment	<p>This phase of rehabilitation consists of the processes and activities required to construct the final landform.</p> <p>In addition to profiling the surface of rehabilitation areas to the approved final landform profile this phase may include works to construct surface water drainage features, encapsulate problematic materials such as tailings, and prepare a substrate with the desired physical and chemical characteristics (e.g. rock raking or ameliorating sodic materials).</p>
Large mine	As defined in the Mining Regulation 2016.
Lease holder	The holder of a mining lease.

WORD	DEFINITION
Life of mine	The timeframe of how long a mine is approved to mine, from commencement to closure.
Mine rehabilitation portal	<p>Means the NSW Resources Regulator’s online portal that lease holders must use (via a registered account) to:</p> <ul style="list-style-type: none"> ■ upload rehabilitation geographical information system (GIS) spatial data ■ develop rehabilitation GIS spatial data (using online tracing functions) ■ generate rehabilitation plans and rehabilitation statistics using the map viewer and Rehabilitation Key Performance Indicator functionalities. <p>Data submitted to the mine rehabilitation portal is collated in a centralised geodatabase for use by the NSW Resources Regulator to regulate rehabilitation performance of lease holders.</p>
Mining area	As defined in the <i>Mining Act 1992</i> .
Mining domain	A land management unit with a discrete operational function (e.g. overburden emplacement), and therefore similar geophysical characteristics, that will require specific rehabilitation treatments to achieve the final land use(s).
Mining land	As defined in the <i>Mining Act 1992</i> .
Native vegetation	Has the same meaning as that term under section 60B of the <i>Local Land Services Act 2013</i> .
Overburden	Material overlying coal or a mineral deposit.
Performance indicator	An attribute of the biophysical environment (for example pH, slope, topsoil depth, biomass) that can be used to demonstrate achievement of a rehabilitation objective. It can be measured and audited to demonstrate (and track) the progress of an aspect of rehabilitation towards a desired completion criterion, that is, a defined end point. It may be aligned to an established protocol and used to evaluate changes in a system.

WORD	DEFINITION
Phases of rehabilitation	<p>The stages and sequences of actions required to rehabilitate disturbed land to achieve the final land use. The phases of rehabilitation are:</p> <ul style="list-style-type: none"> ■ active mining ■ decommissioning ■ landform Establishment ■ growth medium development ■ ecosystem and land use establishment ■ ecosystem and land use development.
Progressive rehabilitation	<p>The progress of rehabilitation towards achieving the approved rehabilitation completion criteria. This may be described in terms of domains, phases, performance indicators and rehabilitation completion criteria.</p>
Rehabilitation Completion	<p>The final phase of rehabilitation when a rehabilitation area has achieved the approved rehabilitation objectives and rehabilitation completion criteria for the final land use. Rehabilitation areas may be classified as complete when the NSW Resources Regulator has determined in writing that the relevant rehabilitation obligations have been fulfilled following submission of <i>Form ESF2 Rehabilitation completion and/or review of rehabilitation cost estimate</i> application by the lease holder.</p>
Rehabilitation Completion criteria	<p>As defined in the Mining Regulation 2016.</p>
Rehabilitation cost estimate	<p>As defined in the Mining Regulation 2016.</p>
Rehabilitation management plan	<p>As defined in the Mining Regulation 2016.</p>
Rehabilitation objectives	<p>As defined in the Mining Regulation 2016.</p>
Rehabilitation risk assessment	<p>As defined in the Mining Regulation 2016.</p>
Rehabilitation schedule	<p>The defined timeframes for progressive rehabilitation set out in the forward program.</p>

WORD	DEFINITION
Relevant stakeholders	Means any persons or bodies who may be affected by the mining operations, including rehabilitation, carried out on the lease land, and includes: <ul style="list-style-type: none"> ■ the relevant development consent authority ■ the local council ■ the relevant landholder(s) ■ community consultative committee (if required under the development consent) or equivalent consultative group ■ affected land holder(s) ■ government agencies relevant to the final land use ■ affected infrastructure authorities (electricity, telecommunications, water, pipeline, road, rail authorities) ■ local Aboriginal communities, and ■ any other person or body determined by the Minister to be a relevant stakeholder in relation to a mining lease.
Risk	The effect of uncertainty on objectives. It is measured in terms of consequences and likelihood (AS/NZS ISO 31000:2009).
Secretary	The Secretary of the Department.
Security deposit	An amount that a mining lease holder is required to provide and maintain under a mining lease condition, to secure funding for the fulfilment of obligations under the lease (including obligations that may arise in the future).
Surface disturbance	Includes activities that disturb the surface of the mining area, including mining operations, ancillary mining activities and exploration.
Tailings	A combination of the fine-grained solid material remaining after the recoverable metals and minerals have been extracted from the mined ore, and any process water ² .
Waste	Has the same meaning as that term under the <i>Protection of the Environment Operations Act 1997</i> .

² Commonwealth of Australia (DITR), 2007. *Tailings Management*.

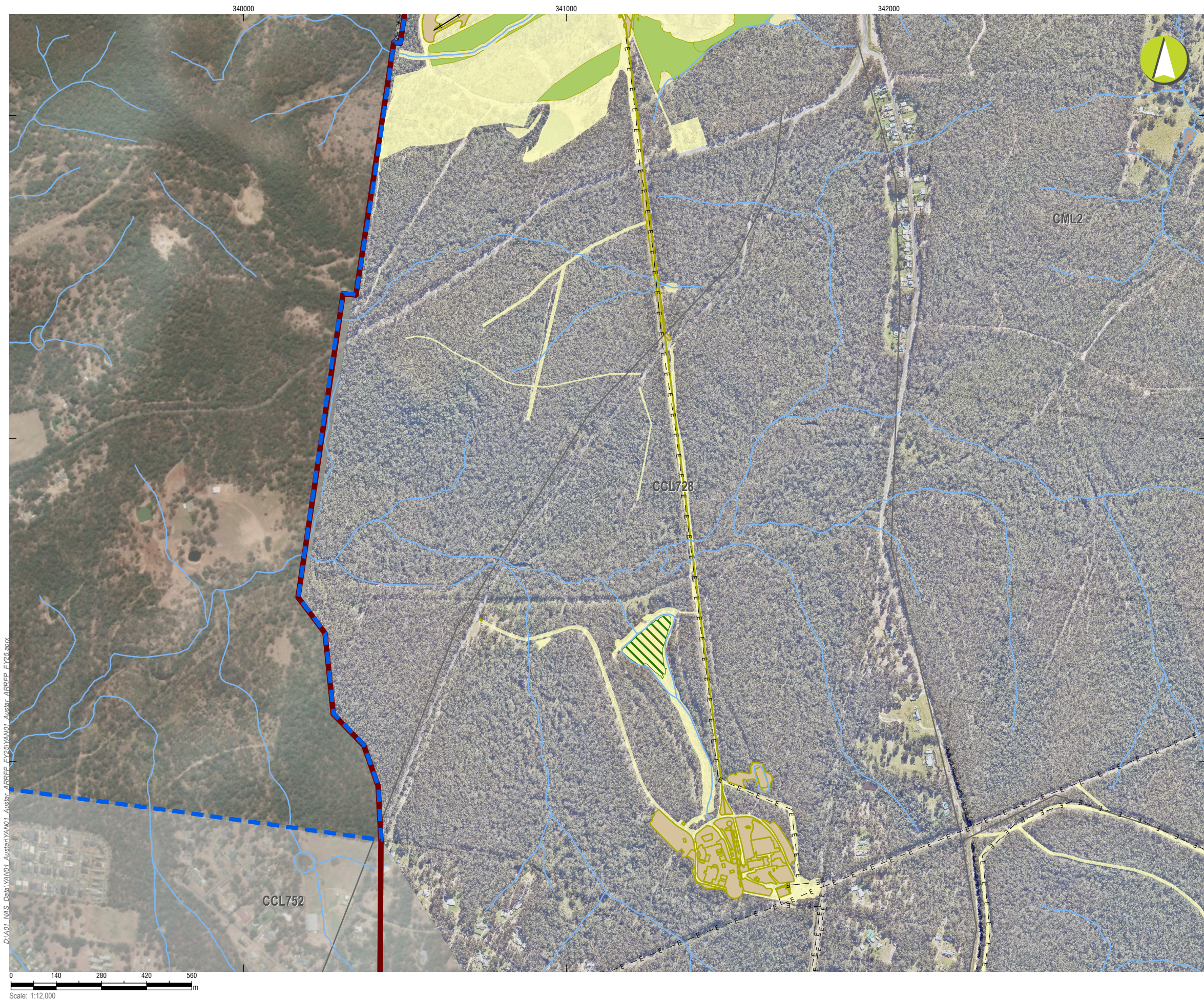
Attachment 3 – Plans

YAN01_ARRFP_Plan2A_MiningRehab_Year1_Detail_01.pdf

YAN01_ARRFP_Plan2B_MiningRehab_Year2_Detail_01.pdf

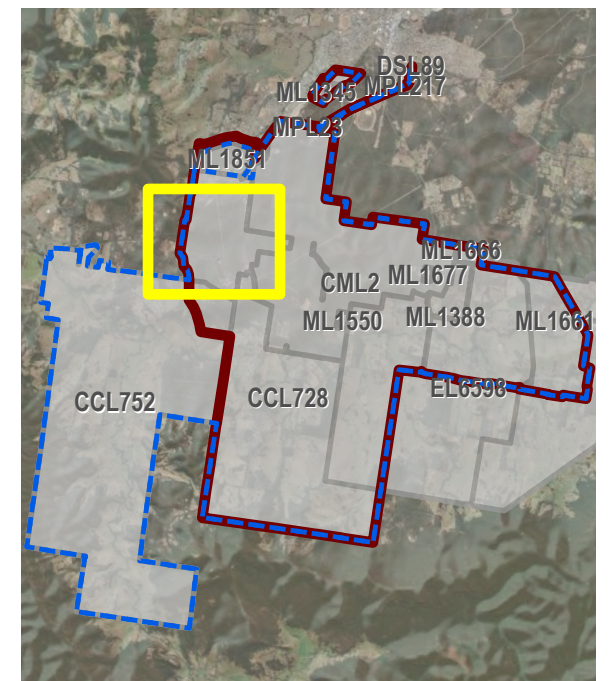
YAN01_ARRFP_Plan2C_MiningRehab_Year3_Detail_01.pdf

Forward Program (LARGE MINE) v2.5



LEGEND

- Project Approval Boundary
- Colliery Holding Boundary
- Austar Mine Plan
- Road
- Railway
- Electricity Transmission Line
- Creek lines
- Current Authorisations**
 - Coal - Current Titles
- Current Rehabilitation Phase**
 - Previous Disturbance
 - Decommissioning
 - Ecosystem and Land Use Establishment
- Forecast Area - Year 1 (FY2026)**
 - Forecast Land Prepared for Rehabilitation (FY2026)



Austar Coal ARRFP

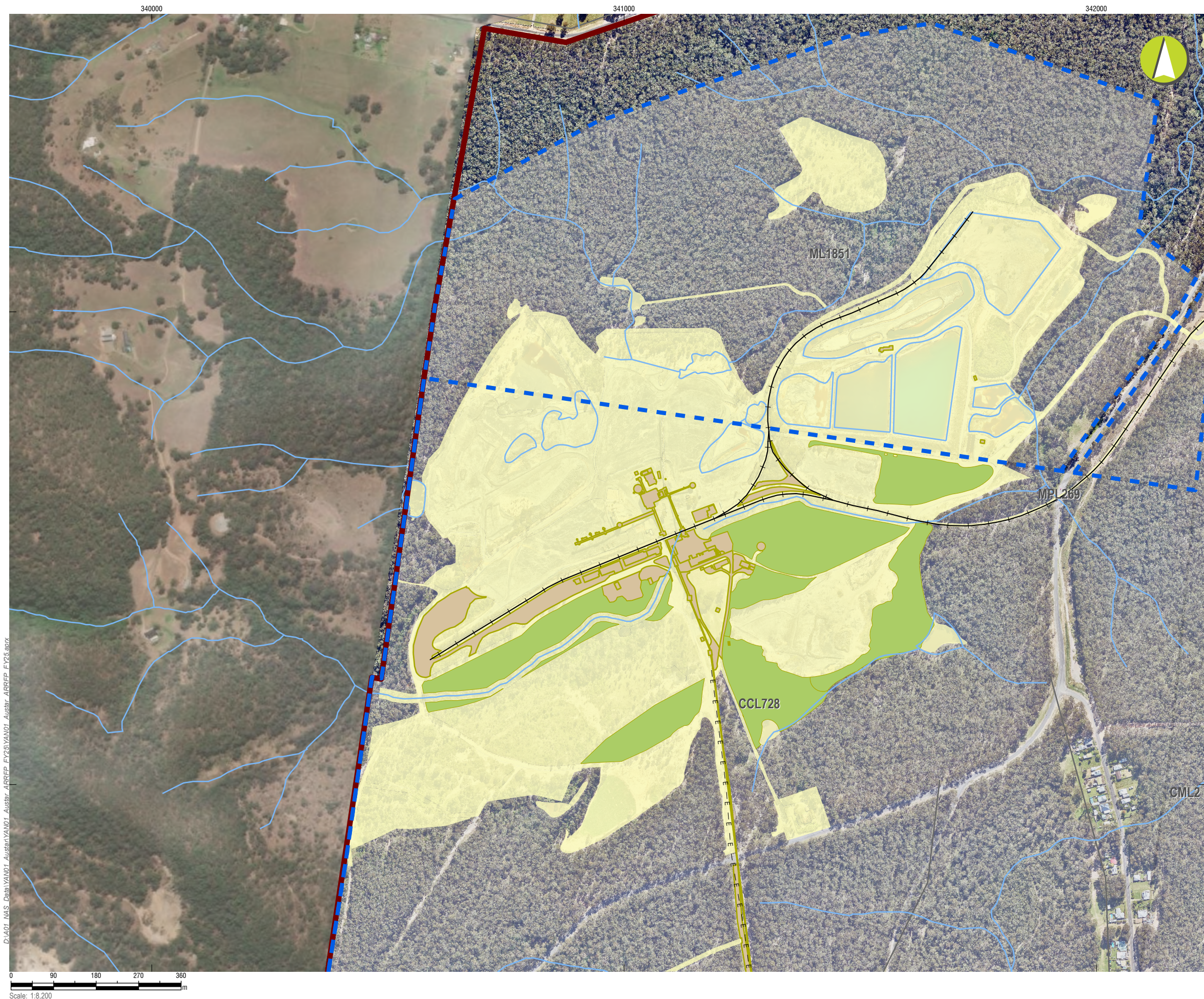
CMA 1 - Austar Pit Top Facilities

Mining and Rehabilitation Year 1 - FY 2026

PLAN 2A

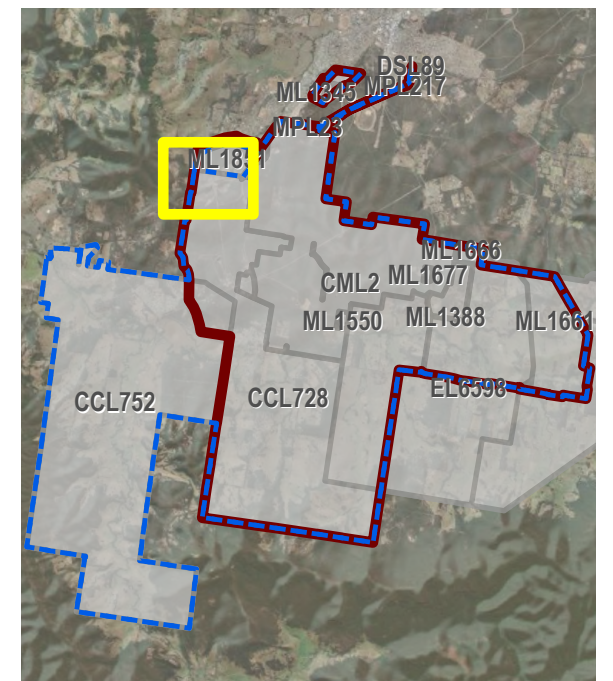
Mine name	Austar Coal Mine
Plan name	
Year of anticipated relinquishment	TBA on final submission
Data theme submission ID No.	XXXX
Spatial Reference	GDA2020 MGA Zone 56
Plan date (date created)	15/09/2025

D:\A01_NAS_Data\YAN01_Austar\ARRFP_FY25\YAN01_Austar_ARRFP_FY25.aprx



LEGEND

- Project Approval Boundary
- Colliery Holding Boundary
- Road
- Railway
- Electricity Transmission Line
- Creek lines
- Current Authorisations**
 - Coal - Current Titles
- Current Rehabilitation Phase**
 - Previous Disturbance
 - Decommissioning
 - Ecosystem and Land Use Establishment



Austar Coal ARRFP

CMA 2 - Pelton CHPP - Inset 1

Mining and Rehabilitation Year 1 - FY 2026

PLAN 2A

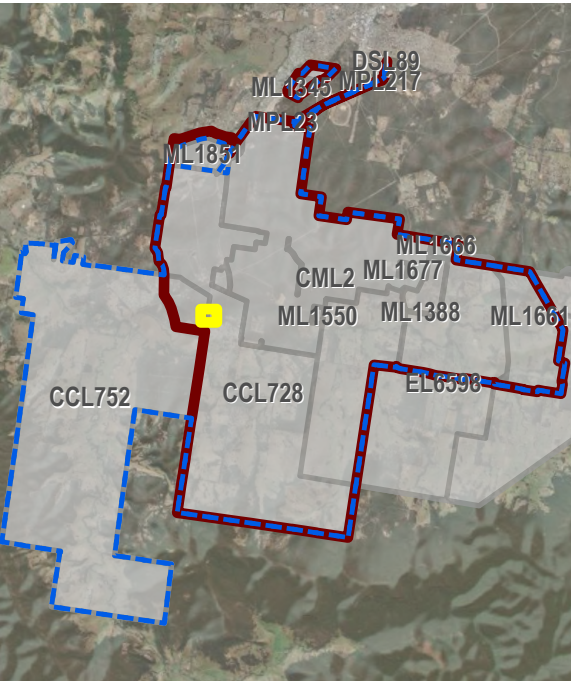
Mine name	Austar Coal Mine
Plan name	
Year of anticipated relinquishment	TBA on final submission
Data theme submission ID No.	XXXX
Spatial Reference	GDA2020 MGA Zone 56
Plan date (date created)	15/09/2025

D:\A01_NAS_Data\YAN01_Austar\YAN01_Austar_ARRFP_FY25\YAN01_Austar_ARRFP_FY25.aprx



LEGEND

- Project Approval Boundary
- Colliery Holding Boundary
- Auster Mine Plan
- Electricity Transmission Line
- Creek lines
- Current Authorisations
 - Coal - Current Titles
- Current Rehabilitation Phase
 - Previous Disturbance
- Forecast Area - Year 1 (FY2026)
 - Forecast Land Prepared for Rehabilitation (FY2026)



Auster Coal ARRFP

CMA 3 - No.1 Shaft - Inset

Mining and Rehabilitation
Year 1 - FY 2026

PLAN 2A

Mine name	Auster Coal Mine
Plan name	
Year of anticipated relinquishment	TBA on final submission
Data theme submission ID No.	XXXX
Spatial Reference	GDA2020 MGA Zone 56
Plan date (date created)	15/09/2025



LEGEND

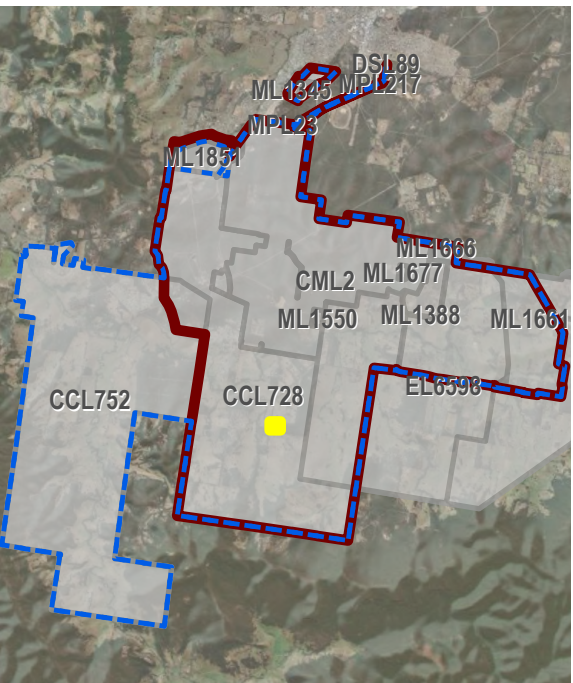
- Project Approval Boundary
- Colliery Holding Boundary
- Austar Mine Plan
- Electricity Transmission Line
- Creek lines

Current Authorisations

- Coal - Current Titles

Current Rehabilitation Phase

- Previous Disturbance



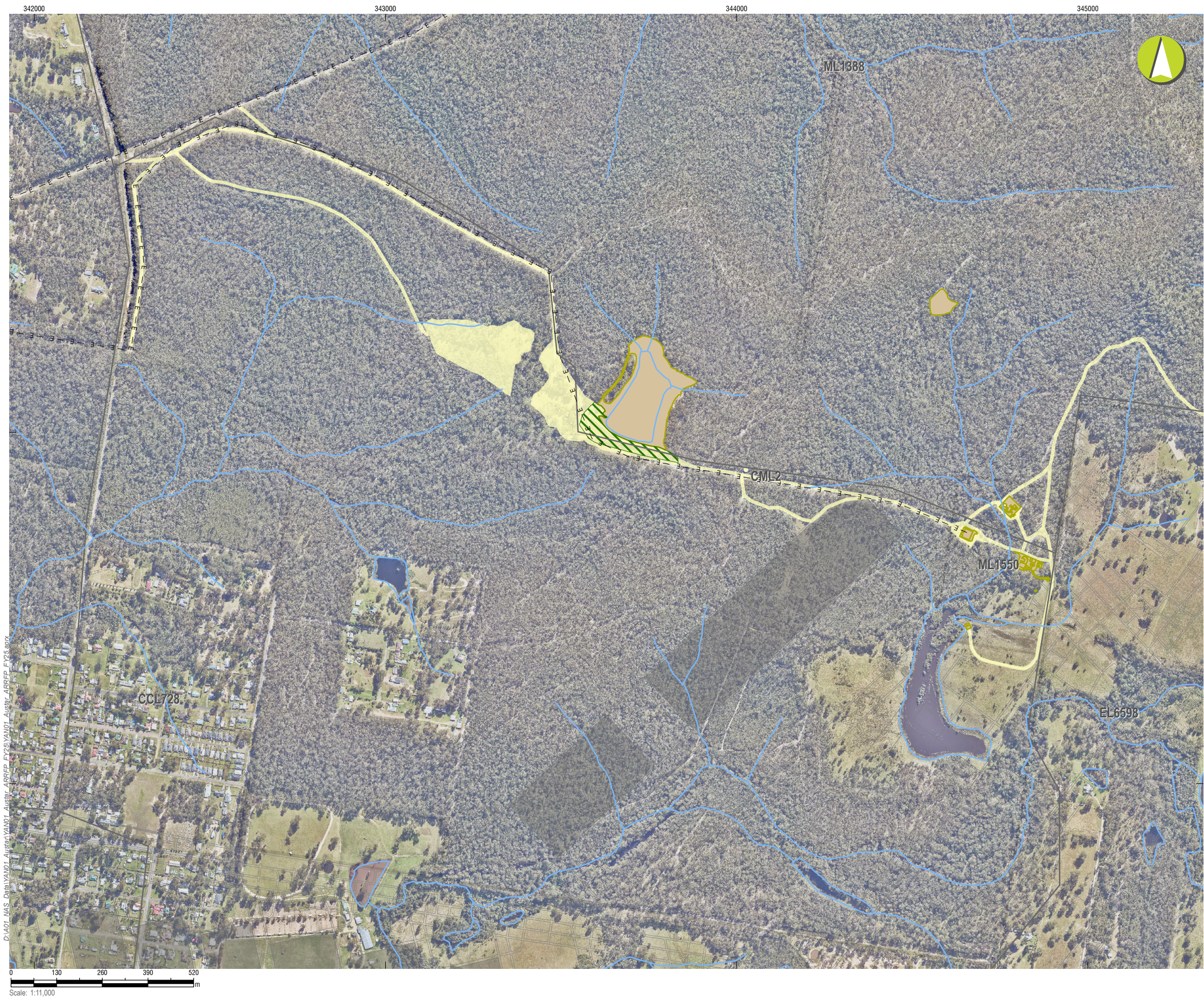
Austar Coal ARRFP

CMA 4 - No.2 Shaft - Inset

Mining and Rehabilitation Year 1 - FY 2026

PLAN 2A

Mine name	Austar Coal Mine
Plan name	
Year of anticipated relinquishment	TBA on final submission
Data theme submission ID No.	XXXX
Spatial Reference	GDA2020 MGA Zone 56
Plan date (date created)	15/09/2025



LEGEND

- Project Approval Boundary
- Colliery Holding Boundary
- Austar Mine Plan
- Road
- Electricity Transmission Line
- Creek lines
- Historic Workings

Current Authorisations

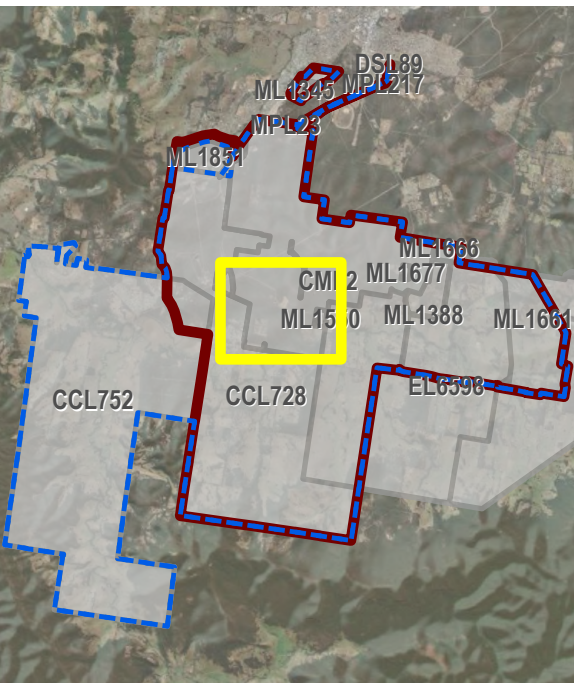
- Coal - Current Titles

Current Rehabilitation Phase

- Previous Disturbance
- Decommissioning

Forecast Area - Year 1 (FY2026)

- Forecast Land Prepared for Rehabilitation (FY2026)



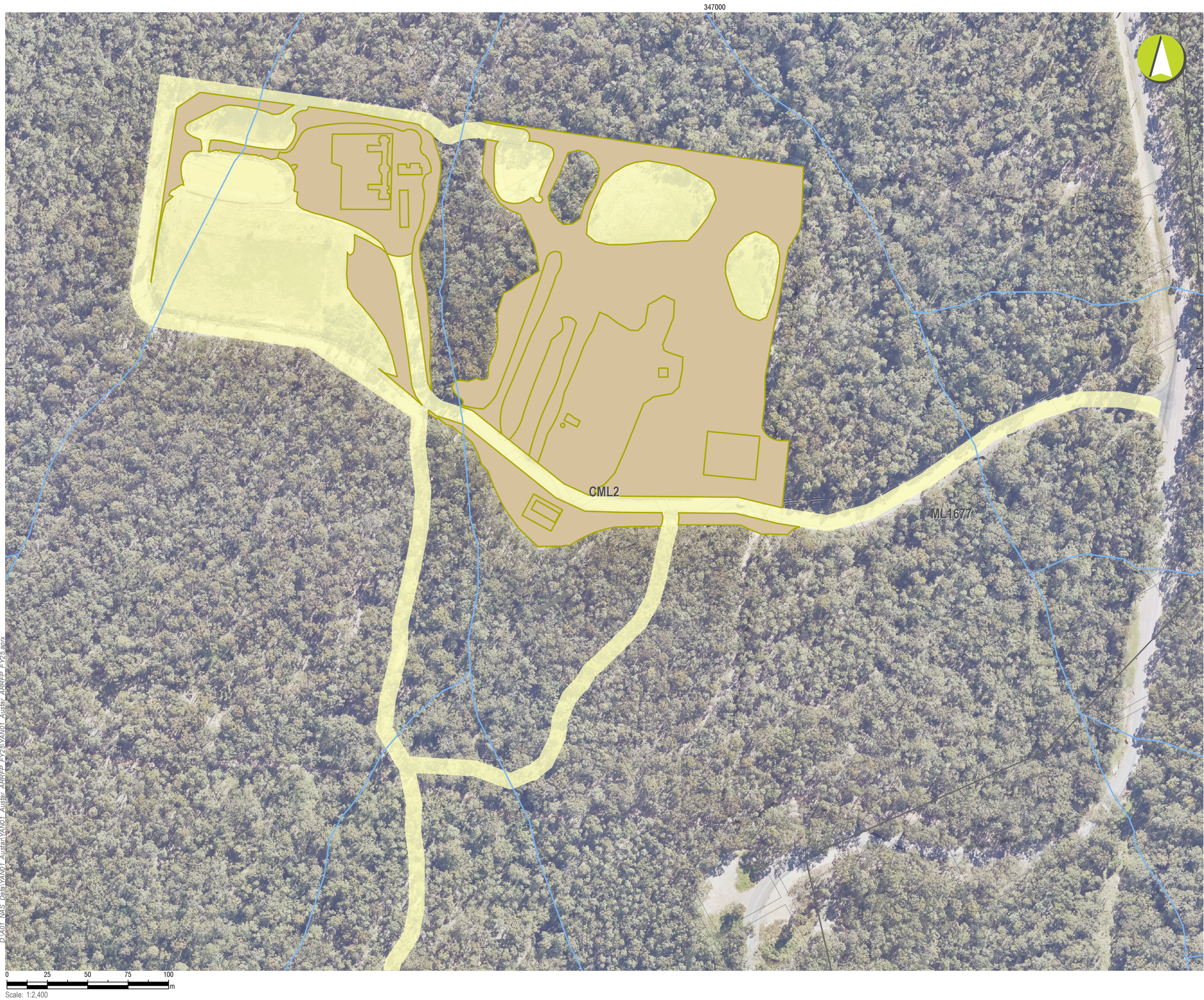
Austar Coal ARRFP

CMA 5 - Cessnock No.1 Colliery / Kalingo Infrastructure Area

Mining and Rehabilitation Year 1 - FY 2026

PLAN 2A

Mine name	Austar Coal Mine
Plan name	
Year of anticipated relinquishment	TBA on final submission
Data theme submission ID No.	XXXX
Spatial Reference	GDA2020 MGA Zone 56
Plan date (date created)	15/09/2025



LEGEND

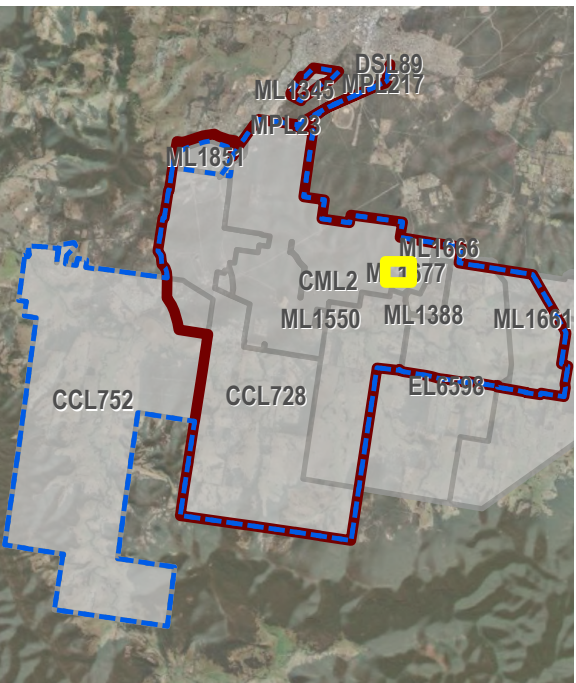
- Project Approval Boundary
- Colliery Holding Boundary
- Austar Mine Plan
- Road
- Creek lines

Current Authorisations

- Coal - Current Titles

Current Rehabilitation Phase

- Previous Disturbance
- Decommissioning



Austar Coal ARRFP

CMA 6 - Kitchener Surface Infrastructure Site

Mining and Rehabilitation Year 1 - FY 2026

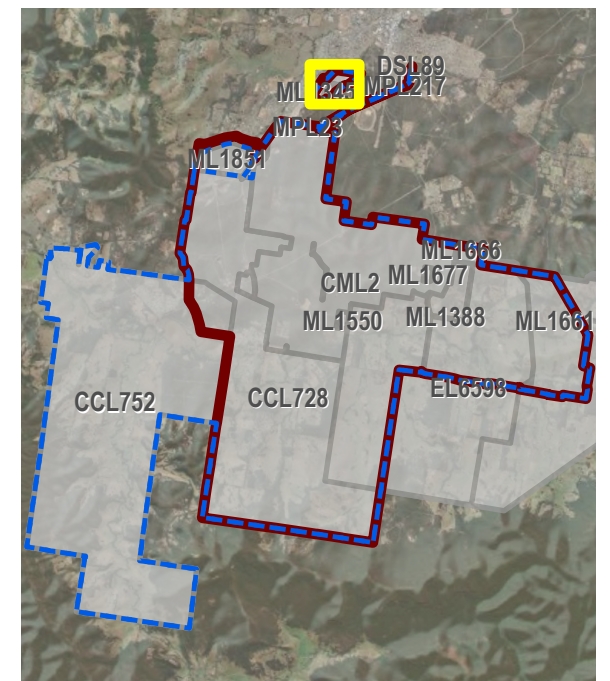
PLAN 2A

Mine name	Austar Coal Mine
Plan name	
Year of anticipated relinquishment	TBA on final submission
Data theme submission ID No.	XXXX
Spatial Reference	GDA2020 MGA Zone 56
Plan date (date created)	15/09/2025



LEGEND

- Project Approval Boundary
- Colliery Holding Boundary
- Creek lines
- Current Authorisations**
- Coal - Current Titles
- Current Rehabilitation Phase**
- Previous Disturbance
- Ecosystem and Land Use Establishment



Austar Coal ARRFP

CMA 7 - Aberdare Extended Emplacement Area

Mining and Rehabilitation Year 1 - FY 2026

PLAN 2A

Mine name	Austar Coal Mine
Plan name	
Year of anticipated relinquishment	TBA on final submission
Data theme submission ID No.	XXXX
Spatial Reference	GDA2020 MGA Zone 56
Plan date (date created)	15/09/2025

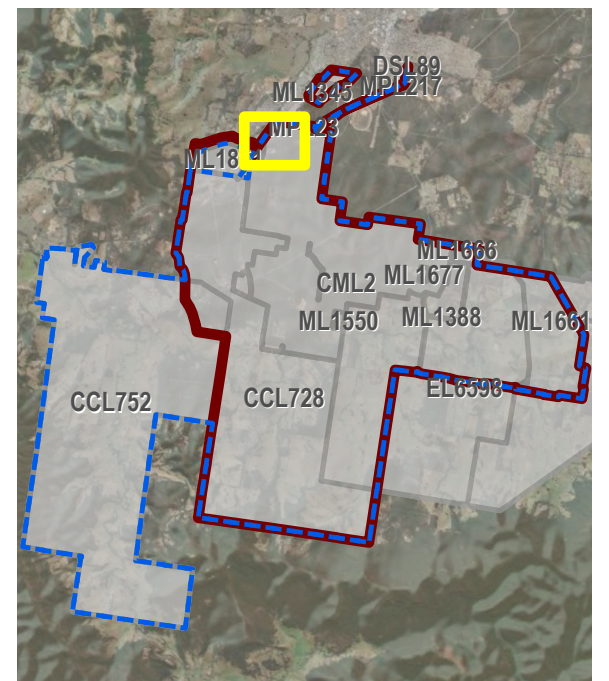
D:\407_MIS_Data\YAN01_Austar\YAN01_Austar_ARRFP_FY25.aprx

Scale: 1:4,500



LEGEND

- Project Approval Boundary
- Colliery Holding Boundary
- Road
- Railway
- Creek lines
- Current Authorisations**
 - Coal - Current Titles
- Current Rehabilitation Phase**
 - Previous Disturbance
 - Ecosystem and Land Use Establishment



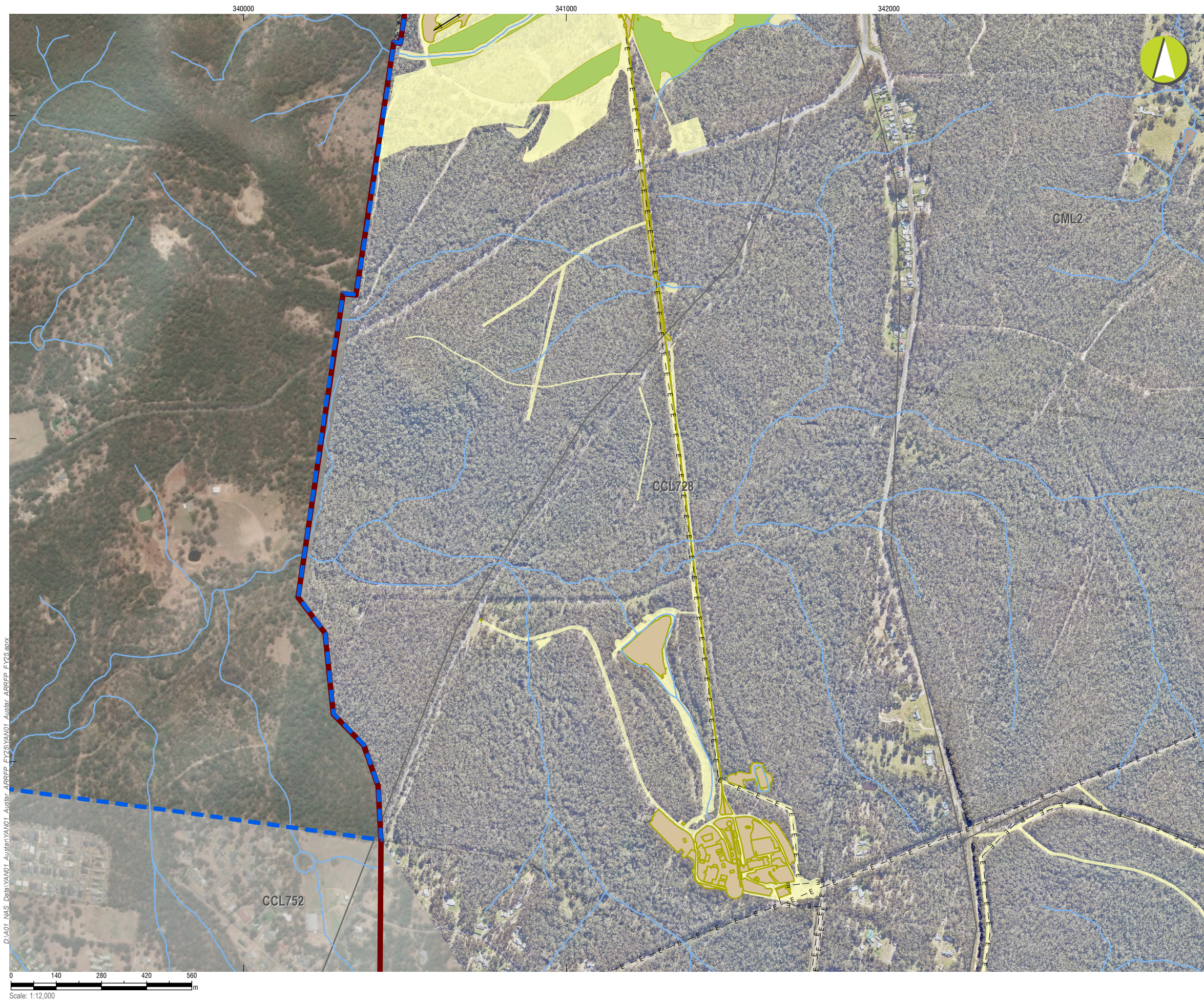
Austar Coal ARRFP

CMA 8 - Bellbird Areas 12 and 13 - Inset

Mining and Rehabilitation Year 1 - FY 2026

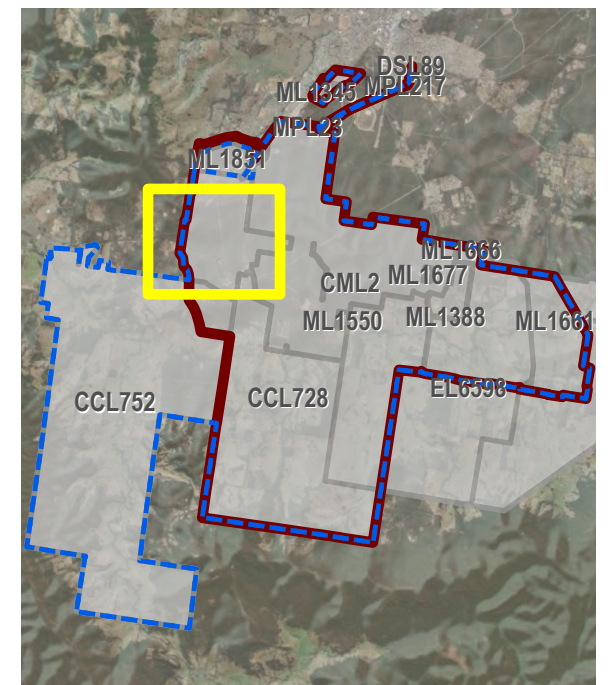
PLAN 2A

Mine name	Austar Coal Mine
Plan name	
Year of anticipated relinquishment	TBA on final submission
Data theme submission ID No.	XXXX
Spatial Reference	GDA2020 MGA Zone 56
Plan date (date created)	15/09/2025



LEGEND

- Project Approval Boundary
- Colliery Holding Boundary
- Austar Mine Plan
- Road
- Railway
- Electricity Transmission Line
- Creek lines
- Current Authorisations**
 - Coal - Current Titles
- Current Rehabilitation Phase**
 - Previous Disturbance
 - Decommissioning
 - Ecosystem and Land Use Establishment



Austar Coal ARRFP

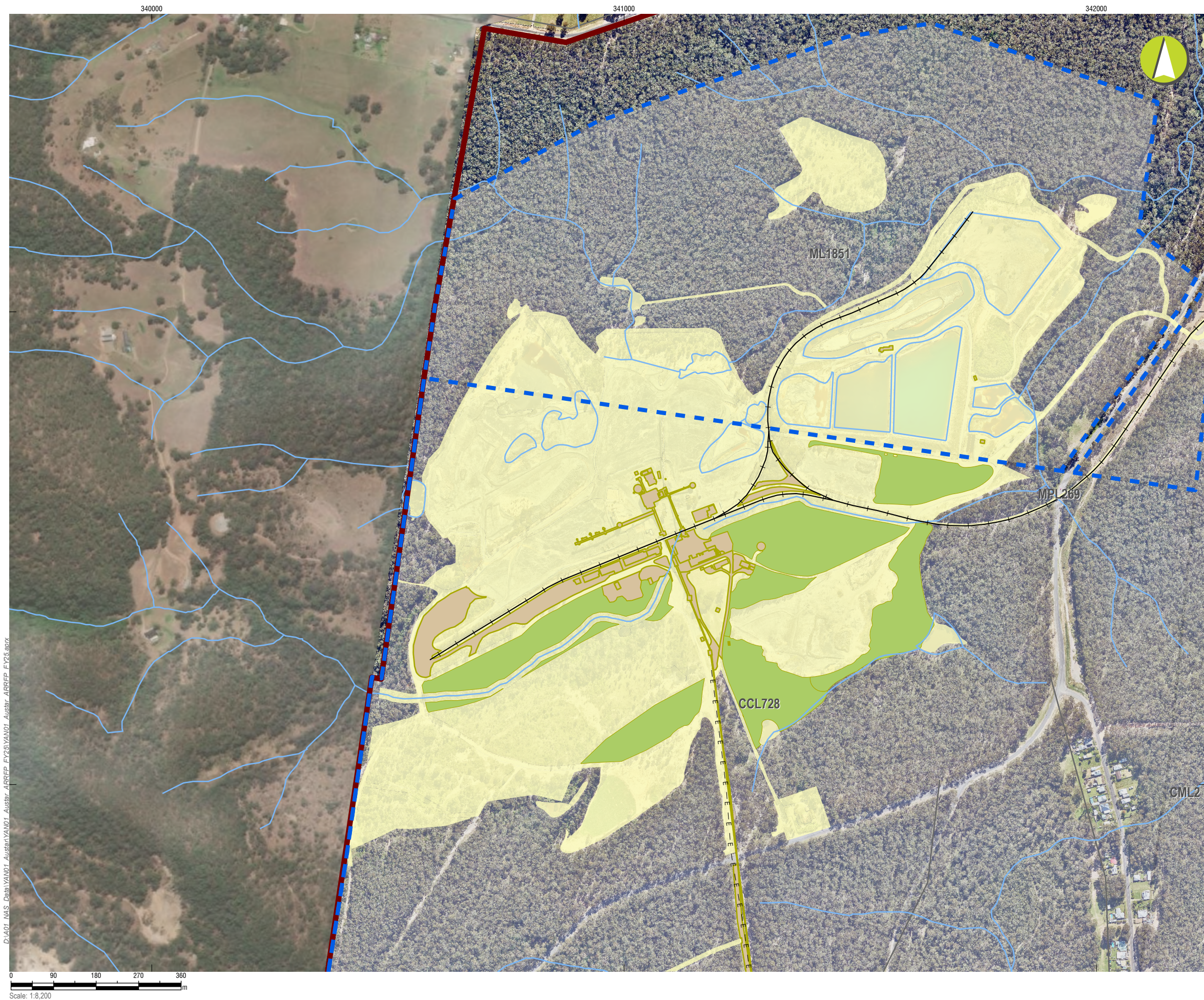
CMA 1 - Austar Pit Top Facilities

Mining and Rehabilitation Year 2 - FY 2027

PLAN 2B

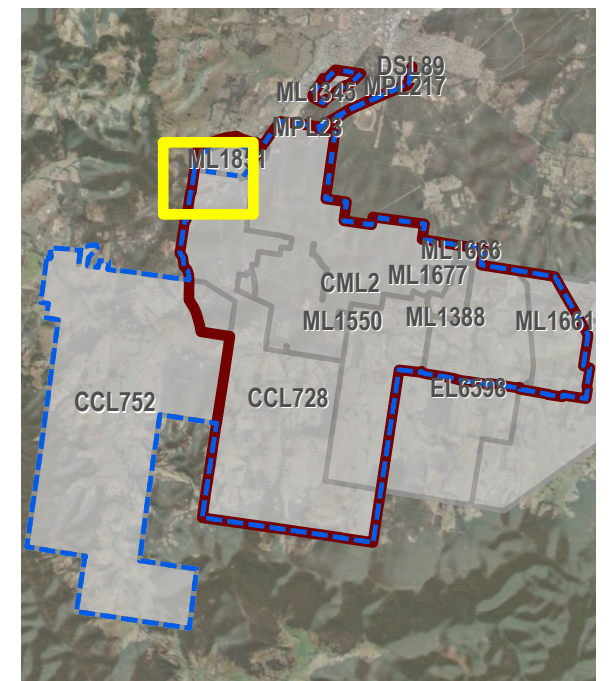
Mine name	Austar Coal Mine
Plan name	
Year of anticipated relinquishment	TBA on final submission
Data theme submission ID No.	XXXX
Spatial Reference	GDA2020 MGA Zone 56
Plan date (date created)	15/09/2025

D:\A01_NAS_Data\YAN01_Austar\ARRFP_FY25\YAN01_Austar_ARRFP_FY25.aprx



LEGEND

- Project Approval Boundary
- Colliery Holding Boundary
- Road
- Railway
- Electricity Transmission Line
- Creek lines
- Current Authorisations**
 - Coal - Current Titles
- Current Rehabilitation Phase**
 - Previous Disturbance
 - Decommissioning
 - Ecosystem and Land Use Establishment



Austar Coal ARFP

CMA 2 - Pelton CHPP - Inset 1

Mining and Rehabilitation Year 2 - FY 2027

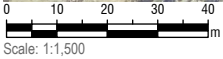
PLAN 2B

Mine name	Austar Coal Mine
Plan name	
Year of anticipated relinquishment	TBA on final submission
Data theme submission ID No.	XXXX
Spatial Reference	GDA2020 MGA Zone 56
Plan date (date created)	15/09/2025

D:\A01_NAS_Data\YAN01_Austar\ARFP_FY25\YAN01_Austar_ARFP_FY25.aprx








D:\A01_NAS_Data\YAN01_Auster\ARRFP_FY25\YAN01_Auster_ARRFP_FY25.aprx




Scale: 1:1,500



LEGEND

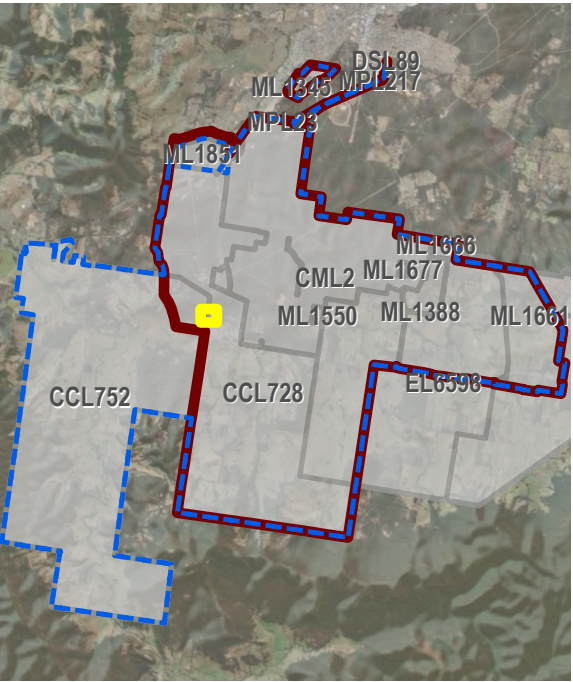
-  Project Approval Boundary
-  Colliery Holding Boundary
-  Auster Mine Plan
-  Electricity Transmission Line
-  Creek lines

Current Authorisations

-  Coal - Current Titles

Current Rehabilitation Phase

-  Previous Disturbance
-  Decommissioning



Auster Coal ARRFP

CMA 3 - No.1 Shaft - Inset

Mining and Rehabilitation
Year 2 - FY 2027

PLAN 2B

Mine name	Auster Coal Mine
Plan name	
Year of anticipated relinquishment	TBA on final submission
Data theme submission ID No.	XXXX
Spatial Reference	GDA2020 MGA Zone 56
Plan date (date created)	15/09/2025



LEGEND

- Project Approval Boundary
- Colliery Holding Boundary
- Austar Mine Plan
- Electricity Transmission Line
- Creek lines

Current Authorisations

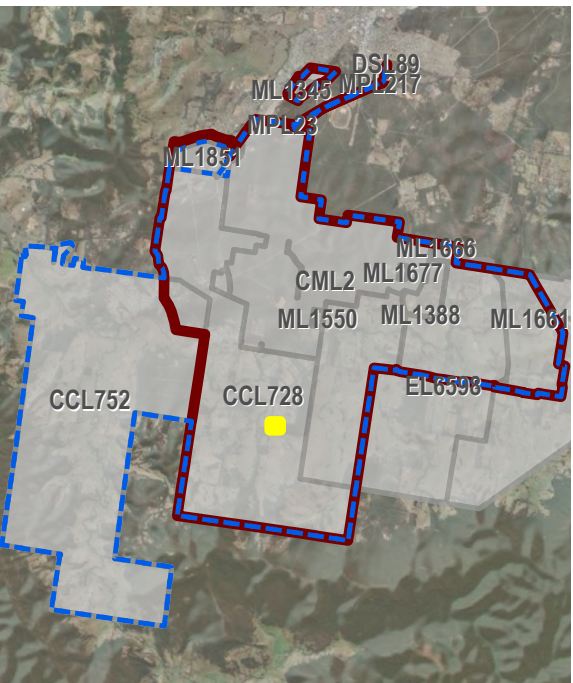
- Coal - Current Titles

Current Rehabilitation Phase

- Previous Disturbance

Forecast Area - Year 2 (FY2027)

- Forecast Land Prepared for Rehabilitation (FY2027)



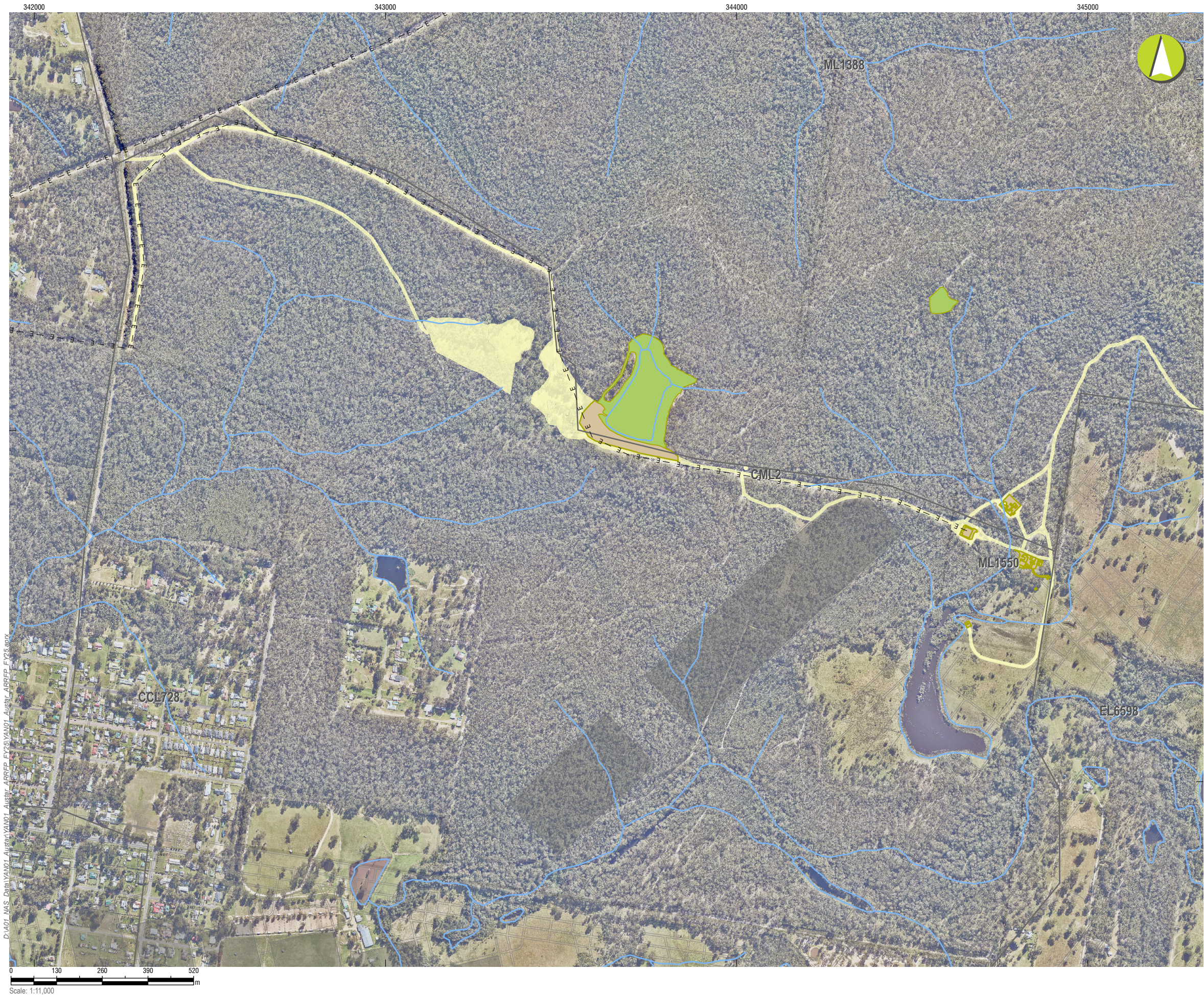
Austar Coal ARRFP

CMA 4 - No.2 Shaft - Inset

Mining and Rehabilitation Year 2 - FY 2027

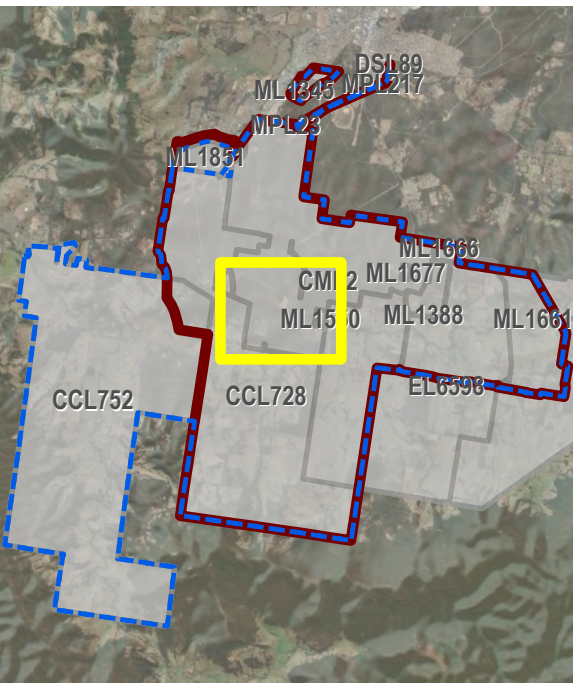
PLAN 2B

Mine name	Austar Coal Mine
Plan name	
Year of anticipated relinquishment	TBA on final submission
Data theme submission ID No.	XXXX
Spatial Reference	GDA2020 MGA Zone 56
Plan date (date created)	15/09/2025



LEGEND

- Project Approval Boundary
- Colliery Holding Boundary
- Austar Mine Plan
- Road
- Electricity Transmission Line
- Creek lines
- Historic Workings
- Current Authorisations**
- Coal - Current Titles
- Current Rehabilitation Phase**
- Previous Disturbance
- Decommissioning
- Ecosystem and Land Use Establishment



Austar Coal ARRFP

CMA 5 - Cessnock No.1 Colliery / Kalingo Infrastructure Area

Mining and Rehabilitation Year 2 - FY 2027

PLAN 2B

Mine name	Austar Coal Mine
Plan name	
Year of anticipated relinquishment	TBA on final submission
Data theme submission ID No.	XXXX
Spatial Reference	GDA2020 MGA Zone 56
Plan date (date created)	15/09/2025



LEGEND

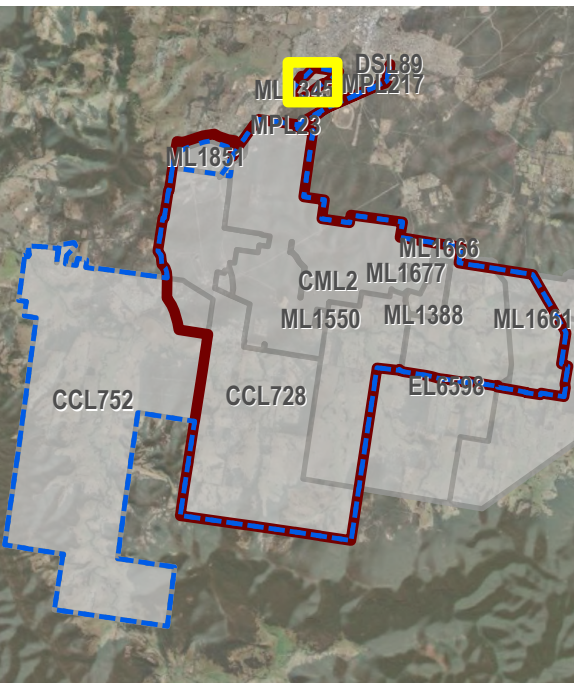
- Project Approval Boundary
- Colliery Holding Boundary
- Creek lines

Current Authorisations

- Coal - Current Titles

Current Rehabilitation Phase

- Previous Disturbance
- Ecosystem and Land Use Establishment



Austar Coal ARRFP

CMA 7 - Aberdare Extended Emplacement Area

Mining and Rehabilitation Year 2 - FY 2027

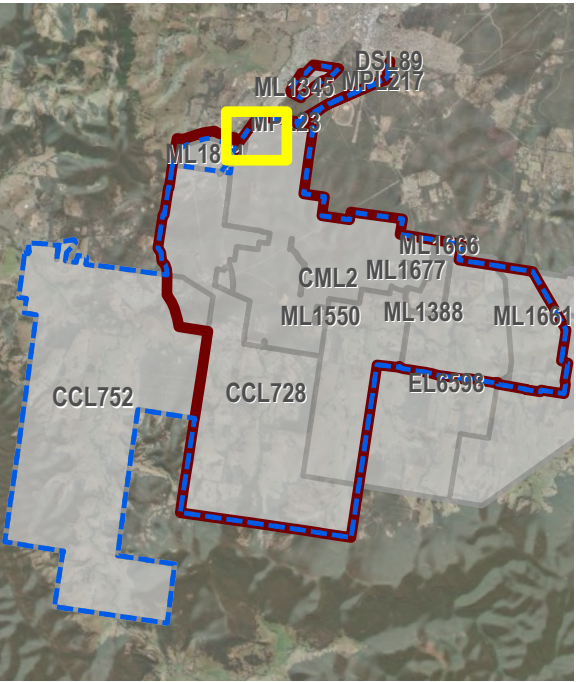
PLAN 2B

Mine name	Austar Coal Mine
Plan name	
Year of anticipated relinquishment	TBA on final submission
Data theme submission ID No.	XXXX
Spatial Reference	GDA2020 MGA Zone 56
Plan date (date created)	15/09/2025



LEGEND

- Project Approval Boundary
- Colliery Holding Boundary
- Road
- Railway
- Creek lines
- Current Authorisations**
 - Coal - Current Titles
- Current Rehabilitation Phase**
 - Previous Disturbance
 - Ecosystem and Land Use Establishment



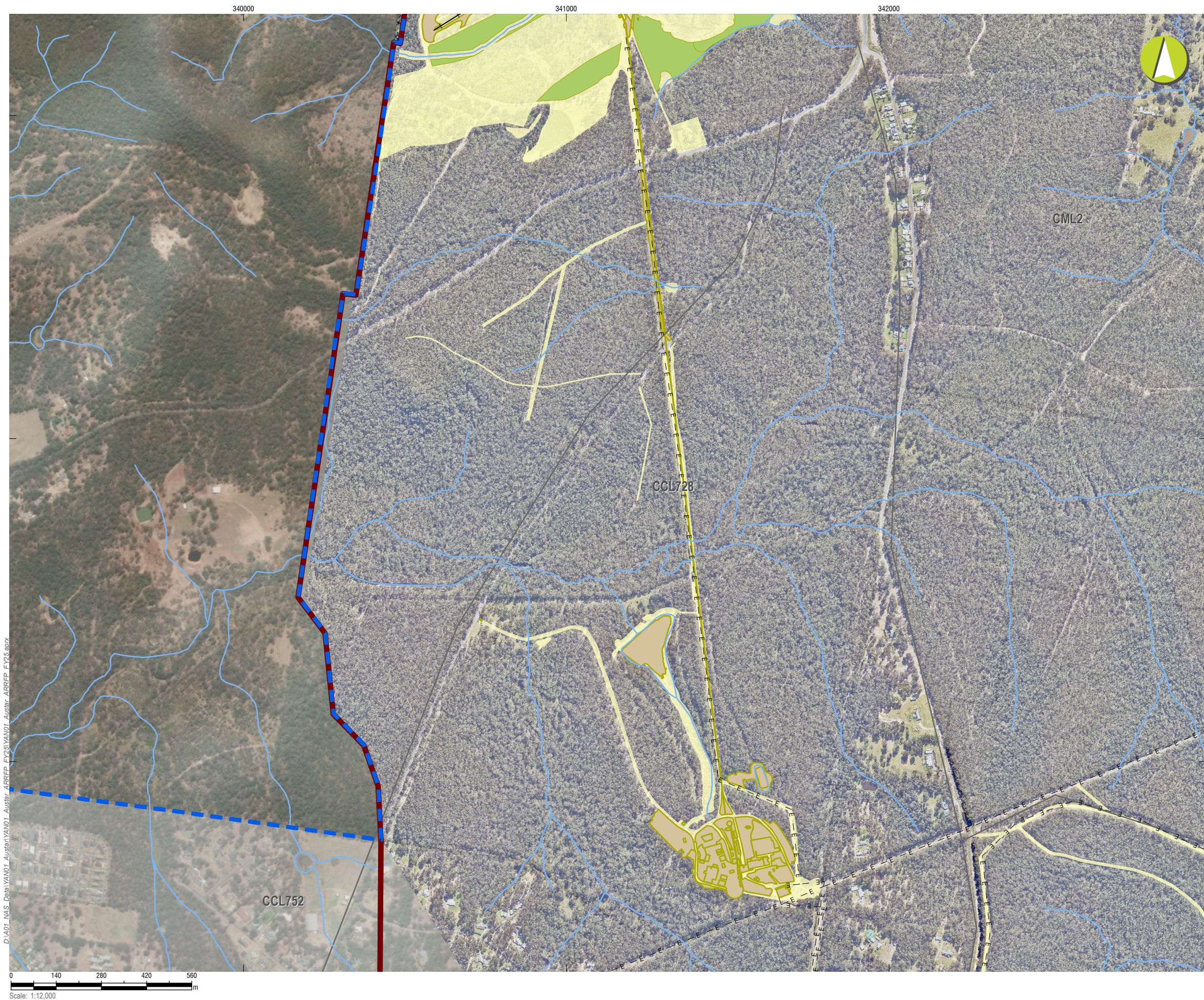
Austar Coal ARRFP

CMA 8 - Bellbird Areas 12 and 13 - Inset

Mining and Rehabilitation
Year 2 - FY 2027

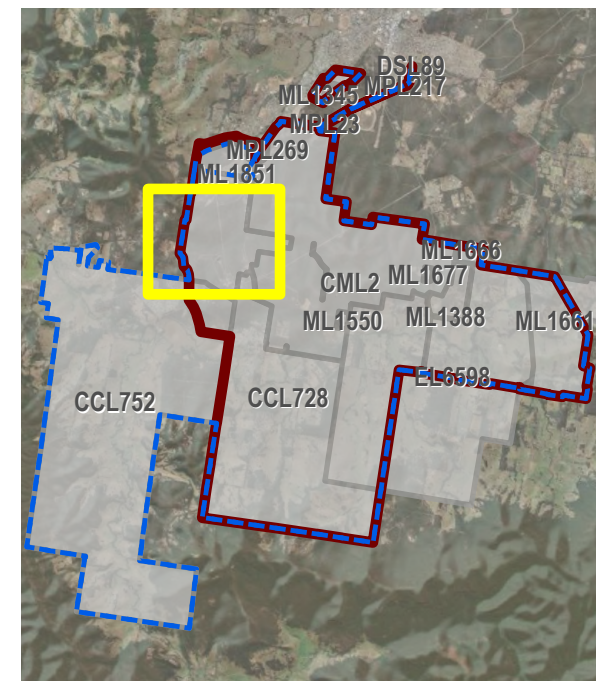
PLAN 2B

Mine name	Austar Coal Mine
Plan name	
Year of anticipated relinquishment	TBA on final submission
Data theme submission ID No.	XXXX
Spatial Reference	GDA2020 MGA Zone 56
Plan date (date created)	15/09/2025



LEGEND

- Project Approval Boundary
- Colliery Holding Boundary
- Austar Mine Plan
- Road
- Railway
- Electricity Transmission Line
- Creek lines
- Current Authorisations**
 - Coal - Current Titles
- Current Rehabilitation Phase**
 - Previous Disturbance
 - Decommissioning
 - Ecosystem and Land Use Establishment



Austar Coal ARRP

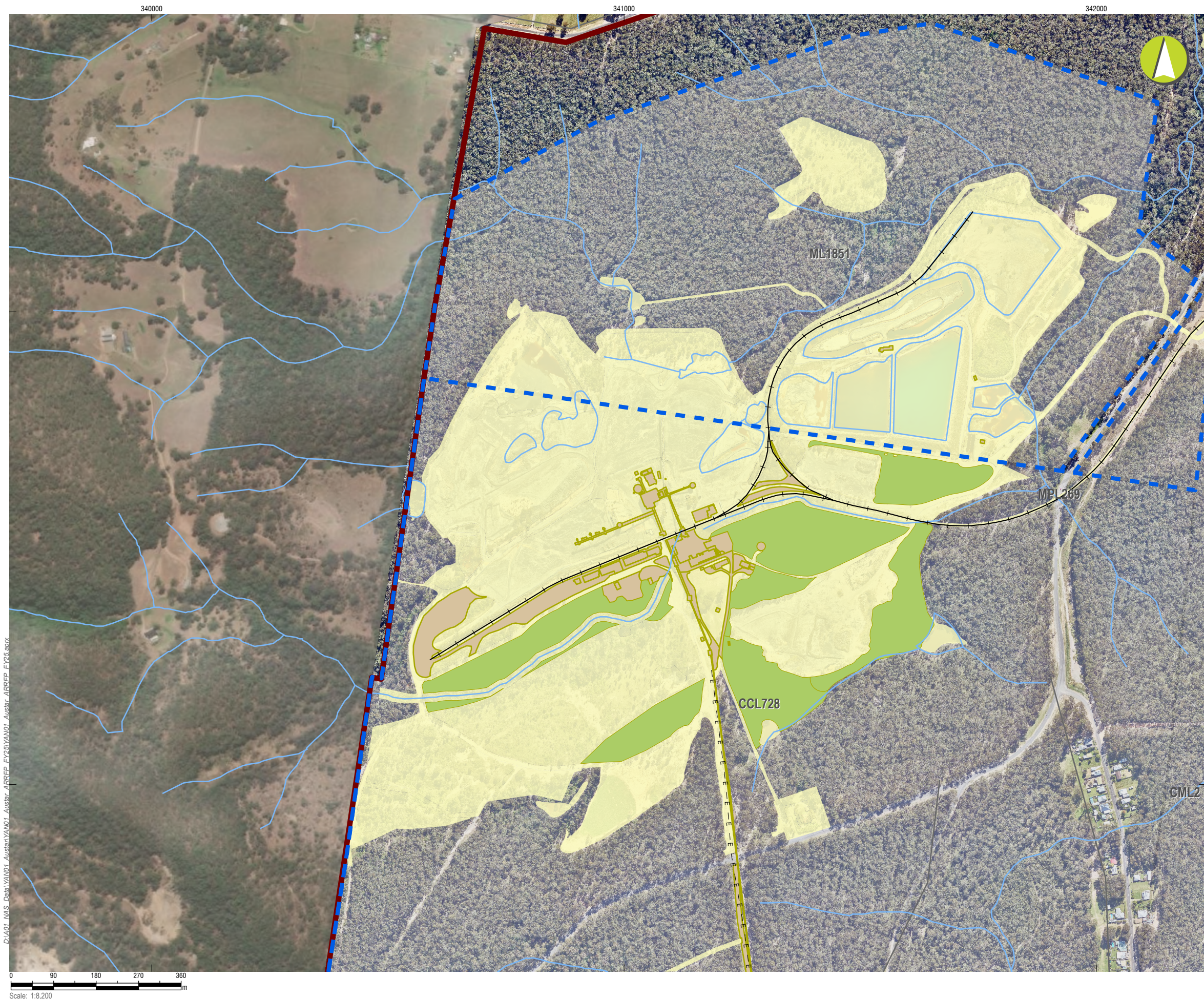
CMA 1 - Austar Pit Top Facilities

Mining and Rehabilitation Year 3 - FY 2028

PLAN 2C

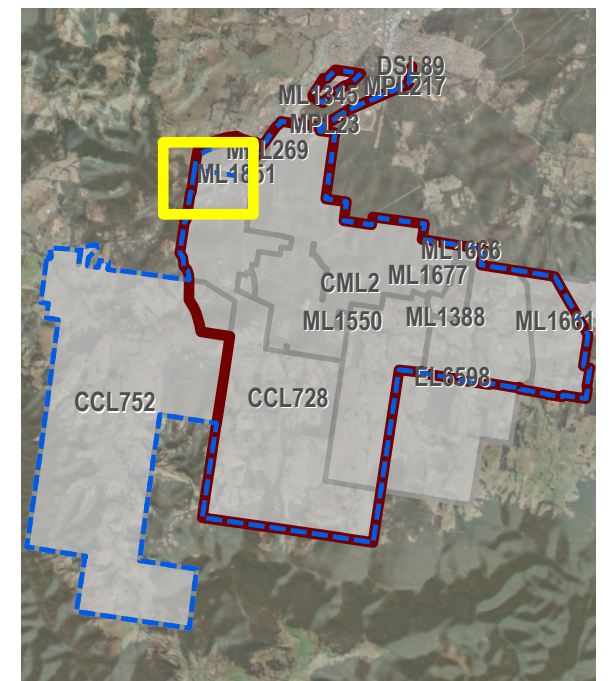
Mine name	Austar Coal Mine
Plan name	
Year of anticipated relinquishment	TBA on final submission
Data theme submission ID No.	XXXX
Spatial Reference	GDA2020 MGA Zone 56
Plan date (date created)	15/09/2025

D:\A01_NAS_Data\YAN01_Austar\ARRFP_FY25\YAN01_Austar_ARRFP_FY25.aprx



LEGEND

- Project Approval Boundary
- Colliery Holding Boundary
- Road
- Railway
- Electricity Transmission Line
- Creek lines
- Current Authorisations**
 - Coal - Current Titles
- Current Rehabilitation Phase**
 - Previous Disturbance
 - Decommissioning
 - Ecosystem and Land Use Establishment



Austar Coal ARRFP

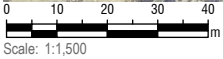
CMA 2 - Pelton CHPP - Inset 1

Mining and Rehabilitation Year 3 - FY 2028

PLAN 2C

Mine name	Austar Coal Mine
Plan name	
Year of anticipated relinquishment	TBA on final submission
Data theme submission ID No.	XXXX
Spatial Reference	GDA2020 MGA Zone 56
Plan date (date created)	15/09/2025

D:\A01_NAS_Data\YAN01_Austar\YAN01_Austar_ARRFP_FY25\YAN01_Austar_ARRFP_FY25.aprx



Source: PA Boundaries, Mining Leases (Yancoal, 2024).
Rehabilitation and Disturbance (Yancoal, 2025).
LPI Data (NSW Spatial, 2024)

LEGEND

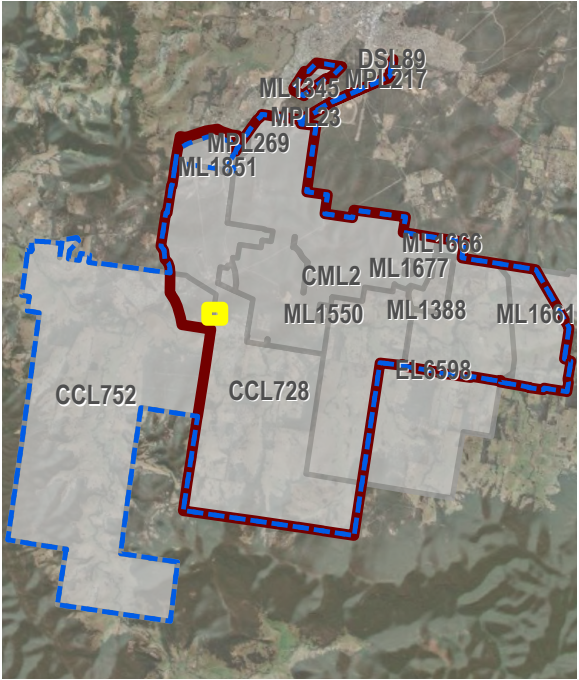
- Project Approval Boundary
- Colliery Holding Boundary
- Austar Mine Plan
- Electricity Transmission Line
- Creek lines

Current Authorisations

- Coal - Current Titles

Current Rehabilitation Phase

- Previous Disturbance
- Decommissioning



Austar Coal ARRFP

CMA 3 - No.1 Shaft - Inset

Mining and Rehabilitation
Year 3 - FY 2028

PLAN 2C

Mine name	Austar Coal Mine
Plan name	
Year of anticipated relinquishment	TBA on final submission
Data theme submission ID No.	XXXX
Spatial Reference	GDA2020 MGA Zone 56
Plan date (date created)	15/09/2025



LEGEND

Project Approval Boundary

Colliery Holding Boundary

Austar Mine Plan

Electricity Transmission Line

Creek lines

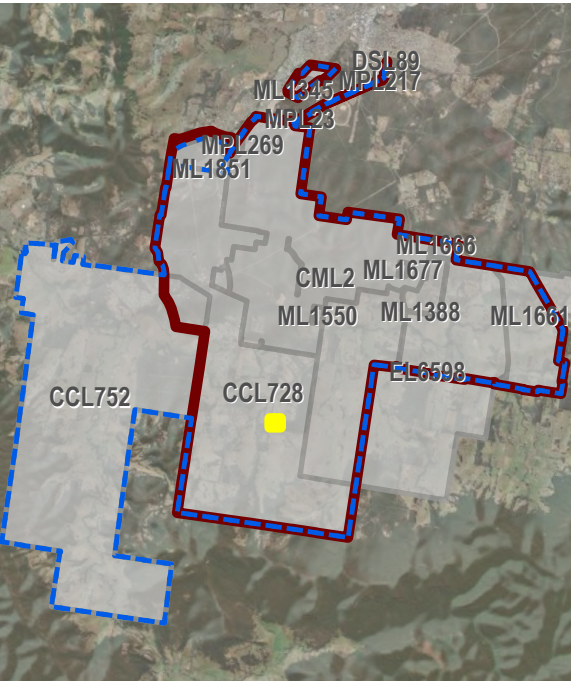
Current Authorisations

Coal - Current Titles

Current Rehabilitation Phase

Previous Disturbance

Decommissioning



Austar Coal ARRFP

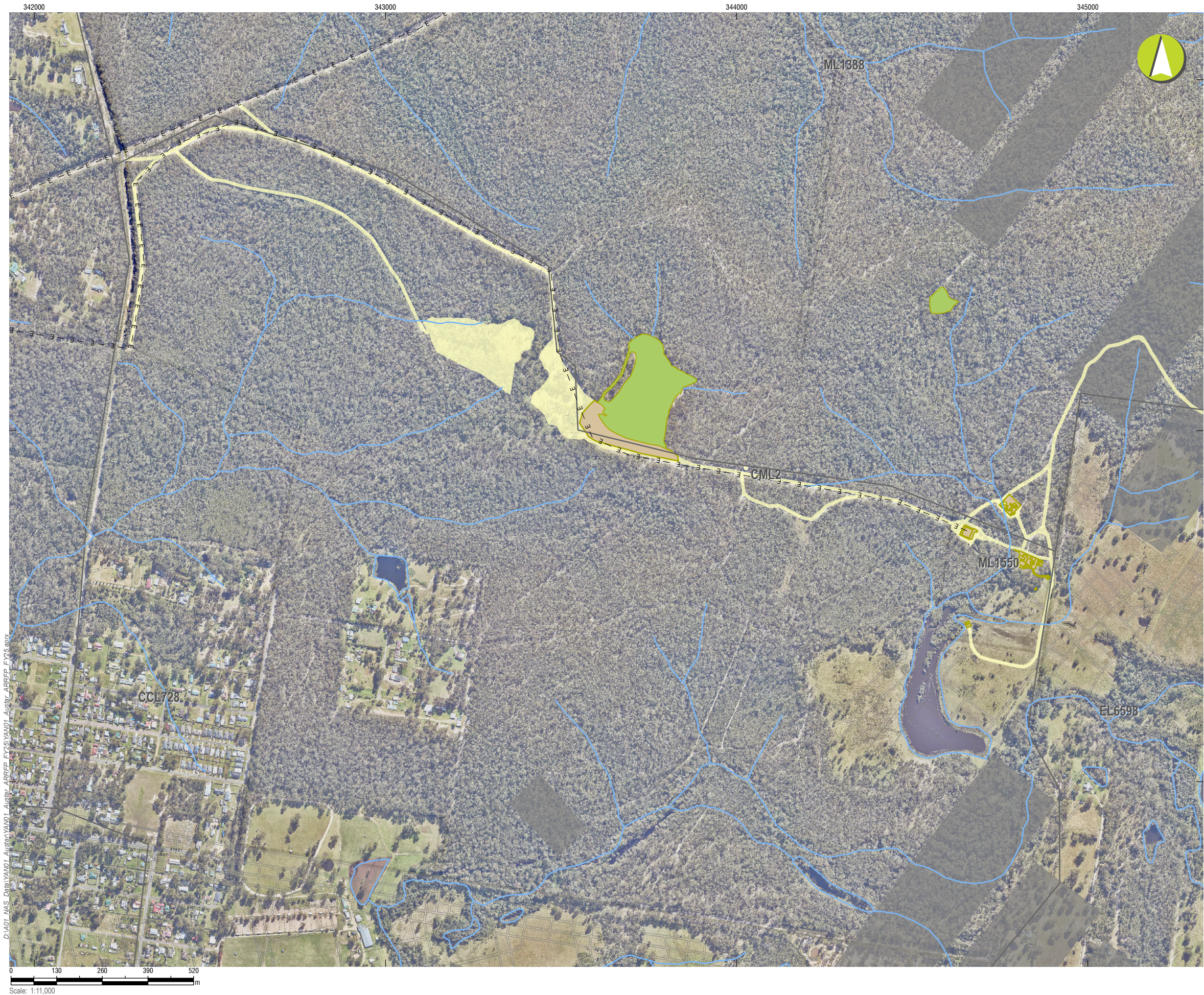
CMA 4 - No.2 Shaft - Inset

Mining and Rehabilitation

Year 3 - FY 2028

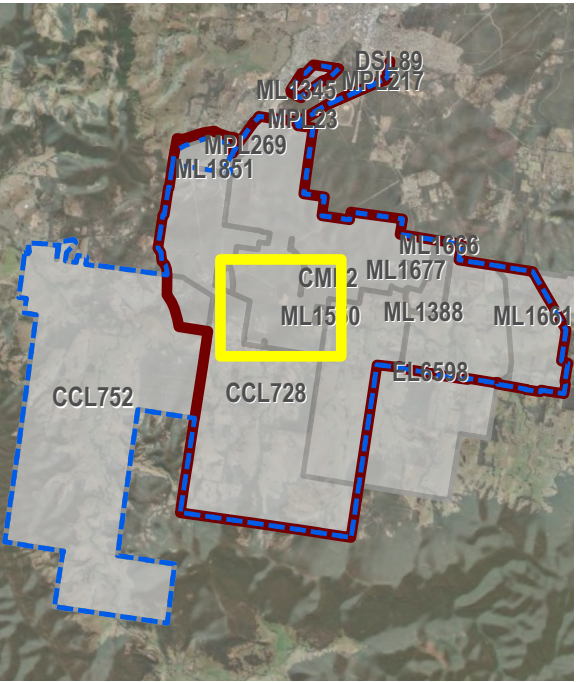
PLAN 2C

Mine name	Austar Coal Mine
Plan name	
Year of anticipated relinquishment	TBA on final submission
Data theme submission ID No.	XXXX
Spatial Reference	GDA2020 MGA Zone 56
Plan date (date created)	15/09/2025



LEGEND

- Project Approval Boundary
- Colliery Holding Boundary
- Austar Mine Plan
- Road
- Electricity Transmission Line
- Creek lines
- Completed workings
- Current Authorisations**
 - Coal - Current Titles
- Current Rehabilitation Phase**
 - Previous Disturbance
 - Decommissioning
 - Ecosystem and Land Use Establishment



Austar Coal ARRP

CMA 5 - Cessnock No.1 Colliery / Kalingo Infrastructure Area

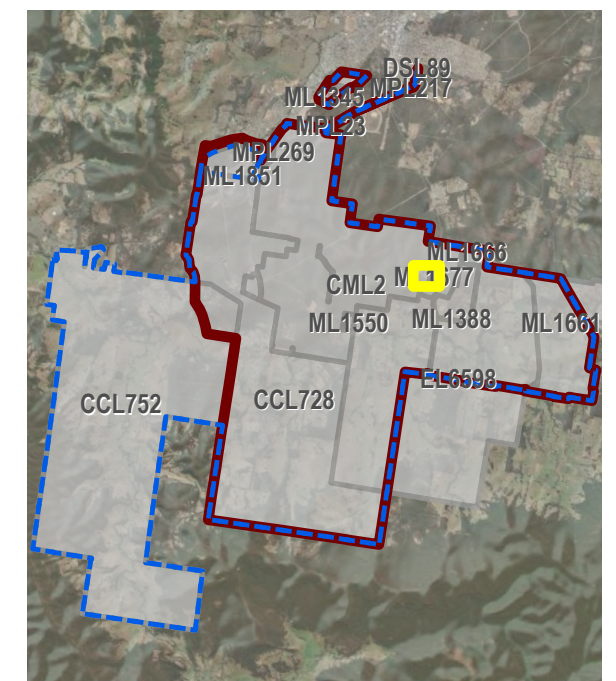
Mining and Rehabilitation
Year 3 - FY 2028

PLAN 2C

Mine name	Austar Coal Mine
Plan name	
Year of anticipated relinquishment	TBA on final submission
Data theme submission ID No.	XXXX
Spatial Reference	GDA2020 MGA Zone 56
Plan date (date created)	15/09/2025



LEGEND



Austar Coal ARRFP

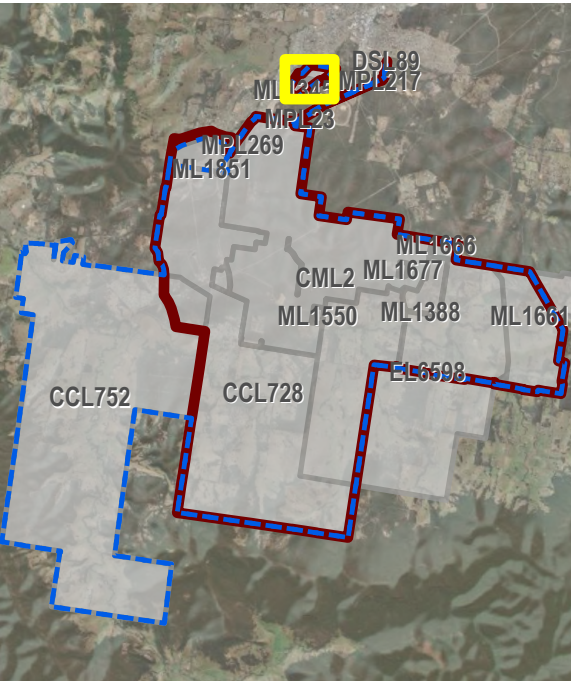
Mining and Rehabilitation Year 3 - FY 2028

Mine name	Austar Coal Mine
Plan name	
Year of anticipated relinquishment	TBA on final submission
Data theme submission ID No.	XXXX
Spatial Reference	GDA2020 MGA Zone 56
Plan date (date created)	15/09/2025



LEGEND

- Project Approval Boundary
- Colliery Holding Boundary
- Creek lines
- Current Authorisations**
- Coal - Current Titles
- Current Rehabilitation Phase**
- Previous Disturbance
- Ecosystem and Land Use Establishment



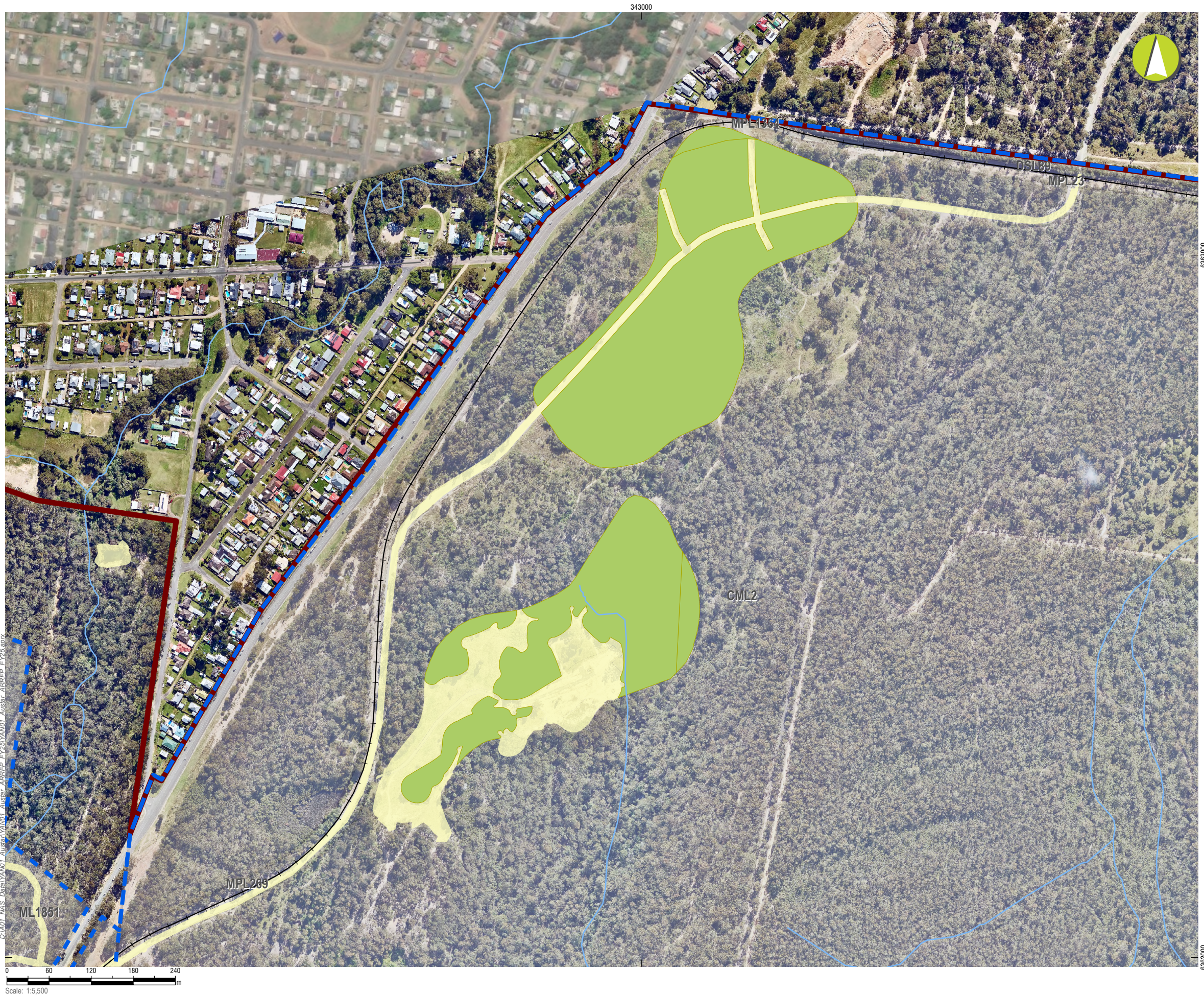
Austar Coal ARRFP

CMA 7 - Aberdare Extended Emplacement Area

Mining and Rehabilitation Year 3 - FY 2028

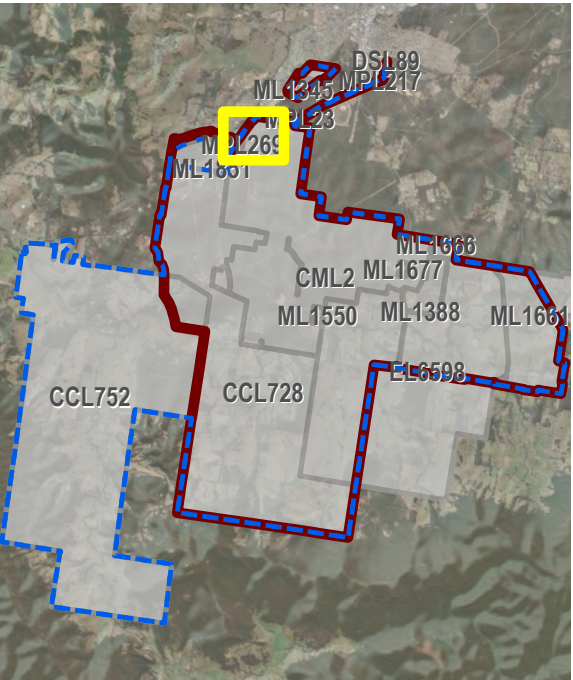
PLAN 2C

Mine name	Austar Coal Mine
Plan name	
Year of anticipated relinquishment	TBA on final submission
Data theme submission ID No.	XXXX
Spatial Reference	GDA2020 MGA Zone 56
Plan date (date created)	15/09/2025



LEGEND

- Project Approval Boundary
- Colliery Holding Boundary
- Road
- Railway
- Creek lines
- Current Authorisations**
 - Coal - Current Titles
- Current Rehabilitation Phase**
 - Previous Disturbance
 - Ecosystem and Land Use Establishment



Austar Coal ARRF

CMA 8 - Bellbird Areas 12 and 13 - Inset

Mining and Rehabilitation Year 3 - FY 2028

PLAN 2C

Mine name	Austar Coal Mine
Plan name	
Year of anticipated relinquishment	TBA on final submission
Data theme submission ID No.	XXXX
Spatial Reference	GDA2020 MGA Zone 56
Plan date (date created)	15/09/2025



Underground Summary Rehabilitation Cost Estimation

Note: Sections of this page are automatically filled in from the registration page

Mine Name:	Austar Coal Mine		
Lease(s):	Refer RMP Summary Table		
Mine Owner:	Austar Coal Pty Limited		
Term of RCE:	FY2025		
Current Security:	\$49,927,000	Date of Last Security Deposit Review:	FY2024
Mine Contact:	William Farnworth		

Domain		Security Deposit
Domain 1: Infrastructure		22,797,884.79
Domain 2: Tailings & Rejects		6,609,951.69
Domain 3: Overburden & Waste		588,574.35
Domain 4: Subsidence & Management		4,173,400.00
Subtotal (Domains and Sundry Items)		\$34,169,810.84
Contingency	10%	\$3,416,981.08
Post Closure Environmental Monitoring	10%	\$3,416,981.08
Project Management and Surveying	10%	\$3,416,981.08
Total Security Deposit for the Mining Project (excl. of GST)		\$44,420,754.09

Note: GST is not included in the above calculation or as part of rehabilitation security deposits required by the Department

- ☐ Alterations have been made to unit prices within this spreadsheet. (Attach a separate sheet providing details of changes).
- ☐ The proposed rehabilitation design is generally consistent with the development consent for the project.

This mine security calculation has been estimated using the best available information at the time.
It is a true and accurate reflection of the total rehabilitation liability held by this mine.

Frank Fulham

Company Representative's Name

EGM Technical Support & Projects

Company Representative's Role / Responsibility

25/09/2025

Date

Signature