



# Monthly Environmental Monitoring Report

For the Month Ending 28 February 2026

<b>Name of Operation</b>	Moolarben Coal Complex
<b>Name of License Holder</b>	Moolarben Coal Operations Pty Ltd
<b>Premises</b>	Moolarben Coal Mine 12 Ulan-Wollar Rd, Ulan NSW 2850
<b>Environmental Protection Licence Number</b>	12932
<b>EPL Link</b>	<a href="https://apps.epa.nsw.gov.au/prpoeoapp/Detail.aspx?option=licence&amp;searchrange=licence&amp;range=POEO%20licence&amp;prp=no&amp;status=Issued">https://apps.epa.nsw.gov.au/prpoeoapp/Detail.aspx?option=licence&amp;searchrange=licence&amp;range=POEO%20licence&amp;prp=no&amp;status=Issued</a>
<b>Reporting Period</b>	01 February 2026 to 28 February 2026
<b>Date last sampled data obtained</b>	16 March 2026
<b>Publication Date</b>	25 March 2026
<b>Version</b>	1
<b>Author</b>	E.Albury
<b>Approver</b>	R.Shanks

EPL 12932 MCO Environmental Monitoring Network

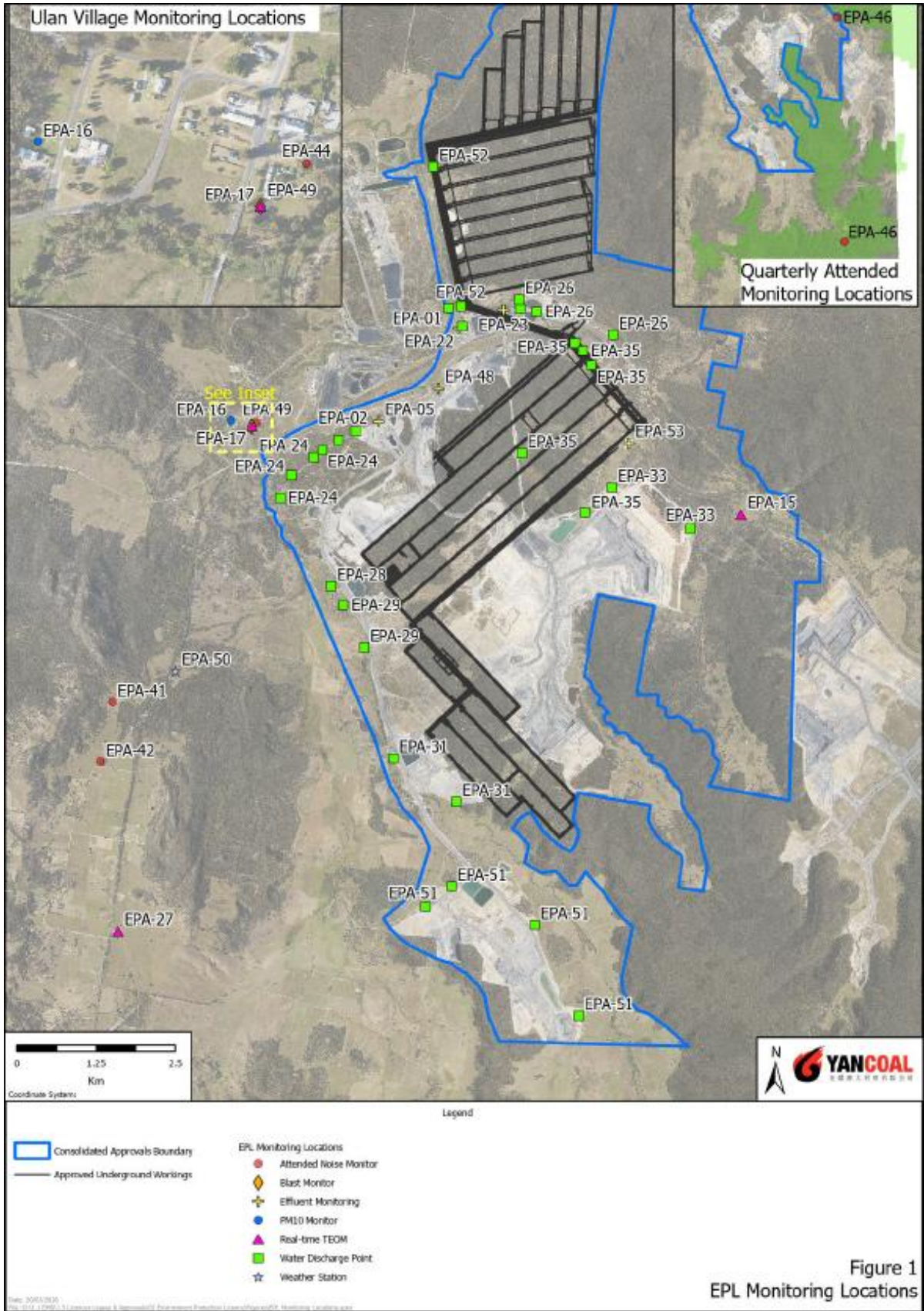


Figure 1  
 EPL Monitoring Locations

## Concentration Monitoring Summary

### Air Quality Monitoring

EPL ID	Location	Pollutant	Unit of Measure	EPL Monitoring Frequency	No. of Samples collected and analysed annually	12 Month Rolling Average			Annual concentration limit	Exceedance (Yes/No)
						Min Value	Mean Value	Max Value		
16	PM01	PM10	µg/m <sup>3</sup>	Every 6 days	10	13.3	13.4	13.6	25	No
N/A	PM02	PM10	µg/m <sup>3</sup>	N/A	10	12.2	12.3	12.4	N/A	N/A
15	TEOM 6	PM10	µg/m <sup>3</sup>	Continuous	100.0%	21.6	21.1	22.4	N/A	N/A
17	TEOM 1	PM10	µg/m <sup>3</sup>	Continuous	100.0%	16.6	16.8	17.0	25	No
27	TEOM 7	PM10	µg/m <sup>3</sup>	Continuous	100.0%	9.6	9.7	9.7	25	No
27	TEOM 7	PM2.5	µg/m <sup>3</sup>	Continuous	100.0%	4.6	4.6	4.6	8	No
N/A	TEOM 4	PM10	µg/m <sup>3</sup>	N/A	100.0%	13.3	13.4	13.5	25	No

EPL ID	Location	Pollutant	Unit of Measure	EPL Monitoring Frequency	No. of Samples collected and analysed for the month	Monthly Data			24 hr concentration limit	Exceedance (Yes/No)
						Min Value	Mean Value	Max Value		
16	PM01	PM10	µg/m <sup>3</sup>	Every 6 days	4	13.0	20.7	27.9	50	No
N/A	PM02	PM10	µg/m <sup>3</sup>	N/A	4	11.3	18.9	26.2	N/A	N/A
15	TEOM 6	PM10	µg/m <sup>3</sup>	Continuous (24 Hr Average)	100%	8.8	24.0	100.7	N/A	N/A
17	TEOM 1	PM10	µg/m <sup>3</sup>	Continuous (24 Hr Average)	100%	13.4	23.6	52.2*	50	No
27	TEOM 7	PM10	µg/m <sup>3</sup>	Continuous (24 Hr Average)	100%	6.5	11.8	18.4	50	No
27	TEOM 7	PM2.5	µg/m <sup>3</sup>	Continuous (24 Hr Average)	100%	1.6	5.4	10.1	25	No
N/A	TEOM 4	PM10	µg/m <sup>3</sup>	N/A (24 Hr Average)	100%	10.2	16.3	24.4	50	No

\*Extraordinary event

**Surface Water Quality Monitoring**

EPL ID	Location	Pollutant	Unit of Measure	No. of Samples collected and analysed	Date Sampled	Results
N/A	SW01	Conductivity	µS/cm	1	12/02/2026	867.2
		pH	pH	1	12/02/2026	7.9
		Total Suspended Solids	mg/L	1	12/02/2026	<5
N/A	SW02	Conductivity	µS/cm	1	12/02/2026	887.8
		pH	pH	1	12/02/2026	8.0
		Total Suspended Solids	mg/L	1	12/02/2026	<5
N/A	SW04	Conductivity	µS/cm	0	12/02/2026	*
		pH	pH	0	12/02/2026	*
		Total Suspended Solids	mg/L	0	12/02/2026	*
N/A	SW05	Conductivity	µS/cm	1	12/02/2026	978.3
		pH	pH	1	12/02/2026	7.4
		Total Suspended Solids	mg/L	1	12/02/2026	<5
N/A	SW07	Conductivity	µS/cm	0	12/02/2026	*
		pH	pH	0	12/02/2026	*
		Total Suspended Solids	mg/L	0	12/02/2026	*
N/A	SW08	Conductivity	µS/cm	1	12/02/2026	1624
		pH	pH	1	12/02/2026	6.7
		Total Suspended Solids	mg/L	1	12/02/2026	8
N/A	SW09	Conductivity	µS/cm	1	12/02/2026	3137
		pH	pH	1	12/02/2026	7.4
		Total Suspended Solids	mg/L	1	12/02/2026	47
N/A	SW12	Conductivity	µS/cm	1	12/02/2026	872
		pH	pH	1	12/02/2026	7.3
		Total Suspended Solids	mg/L	1	12/02/2026	<5
N/A	SW15	Conductivity	µS/cm	0	12/02/2026	*
		pH	pH	0	12/02/2026	*
		Total Suspended Solids	mg/L	0	12/02/2026	*
N/A	SW16	Conductivity	µS/cm	0	12/02/2026	*
		pH	pH	0	12/02/2026	*
		Total Suspended Solids	mg/L	0	12/02/2026	*

**MONTHLY ENVIRONMENTAL MONITORING REPORT**

For the Month Ending 28 February 2026

EPL ID	Location	Pollutant	Unit of Measure	No. of Samples collected and analysed	Date Sampled	Results
N/A	SW17	Conductivity	µS/cm	0	12/02/2026	*
		pH	pH	0	12/02/2026	*
		Total Suspended Solids	mg/L	0	12/02/2026	*
N/A	SW18	Conductivity	µS/cm	0	12/02/2026	*
		pH	pH	0	12/02/2026	*
		Total Suspended Solids	mg/L	0	12/02/2026	*
N/A	SW22	Conductivity	µS/cm	1	12/02/2026	893.5
		pH	pH	1	12/02/2026	8.2
		Total Suspended Solids	mg/L	1	12/02/2026	<5
N/A	SW23	Conductivity	µS/cm	0	12/02/2026	*
		pH	pH	0	12/02/2026	*
		Total Suspended Solids	mg/L	0	12/02/2026	*
N/A	SW24	Conductivity	µS/cm	0	12/02/2026	*
		pH	pH	0	12/02/2026	*
		Total Suspended Solids	mg/L	0	12/02/2026	*

\* No flow

**MONTHLY ENVIRONMENTAL MONITORING REPORT**

For the Month Ending 28 February 2026

**Blasting**

	Location	Pollutant	Unit of Measure	Frequency	No. of Blasts during the reporting period	Results			Limits dBL	Exceedance (Yes/No)
						Min Value	Mean Value	Max Value		
49	BM1 Ulan School	Blast Overpressure	dBL	Every Blast	14	82.7	94.3	104.7	115 (95% of total Blasts over 12 months) 120 (100% of Blasts)	No
		Ground Vibration	mm/s	Every Blast		0.05	0.15	0.51	5mm/s (95% of Blasts over 12 months) 10mm/s (100% of Blasts)	No
N/A	BM5 Ridge Rd	Blast Overpressure	dBL	Every Blast	14	82.1	94.2	117.7	115 (95% of total Blasts over 12 months) 120 (100% of Blasts)	No
		Ground Vibration	mm/s	Every Blast		0.04	0.10	0.29	5mm/s (95% of Blasts over 12 months) 10mm/s (100% of Blasts)	No
N/A	BM8 Moolarben Rd	Blast Overpressure	dBL	Every Blast	14	77.9	96.5	110.2	115 (95% of total Blasts over 12 months) 120 (100% of Blasts)	No
		Ground Vibration	mm/s	Every Blast		0.02	0.10	0.28	5mm/s (95% of Blasts over 12 months) 10mm/s (100% of Blasts)	No

**MONTHLY ENVIRONMENTAL MONITORING REPORT**

For the Month Ending 28 February 2026

**Noise**

EPL ID	Location	Site ID	Monitoring Type	Frequency	Measured Level <sup>3,5</sup> LAeq dB (15min)	Measured Level <sup>4,5</sup> LA1,1dB (1min)	Noise Criteria <sup>1</sup>	Monitoring Completed during the period	Exceedance (Yes/No) <sup>1</sup>
44	Ulan Public School	NA1	Compliance - Attended	Monthly	49	-	Daytime (07:00 – 18:00) LAeq, 15minute: 35 dB	Yes	N/A <sup>2</sup>
N/A	Cope Road (Receiver 258)	NA11	Management (Cumulative) - Attended	Quarterly	-	-	-	-	-
N/A	Lagoons Road	NA2	Validation - Attended	Annually	-	-	-	-	-
42	Winchester Crescent	NA12	Compliance/Validation - Attended	Monthly	30	39	Night time (22:00 – 07:00) LAeq,15minute: 35 dB LA1,1minute: 45 dB	Yes	No
N/A	Upper Ridge Road (Receiver 176)	NA3	Validation - Attended	Annually	-	-	-	-	-
41	Lower Ridge Road	NA6	Compliance -Attended	Monthly	28	38	Night time (22:00 – 07:00) LAeq,15minute: 37 dB LA1, 1minute: 45 dB	Yes	No
N/A	Moolarben Road (Receiver 28)	NA10	Validation - Attended	Annually	-	-	-	-	-
46	Goulburn River National Park	GRNP	Compliance -Attended	Annually	-	-	-	-	-
46	Munghorn Gap Nature Reserve	MGNR	Compliance -Attended	Annually	-	-	-	-	-

- Noise limits are adjusted by +5 dB during 'very noise-enhancing meteorological conditions' in accordance with the NPfl.
- Ulan School was in recess and not in use, therefore noise limits were not applicable in accordance with the consents.
- Site-only L<sub>Aeq,15minute</sub>, includes modifying factor penalties, if applicable
- Site-only L<sub>A1,1minute</sub> based on measured site-only L<sub>Amax</sub>
- Where site-only noise levels are very low or are masked by other sources and are at least 5 dB lower than relevant limits, then a maximum estimate may be provided such as "<20 dB".

**MONTHLY ENVIRONMENTAL MONITORING REPORT**

For the Month Ending 28 February 2026

**Effluent Discharge Points**

EPL ID	Pollutant	Unit of Measure	No. of samples required by Licence	No. of Samples collected and analysed	Date Sampled	Result
5	BOD	mg/L	Quarterly	1	09/02/2026	103
	Nitrogen (total)	mg/L	Quarterly	1	09/02/2026	88.6
	Oil and Grease	mg/L	Quarterly	1	09/02/2026	35
	pH	pH	Quarterly	1	09/02/2026	7.8
	Phosphorus (total)	mg/L	Quarterly	1	09/02/2026	10.3
	Total Suspended Solids	mg/L	Quarterly	1	09/02/2026	134
22	BOD	mg/L	Quarterly	1	09/02/2026	17
	Nitrogen (total)	mg/L	Quarterly	1	09/02/2026	56.1
	Oil and Grease	mg/L	Quarterly	1	09/02/2026	<5
	pH	pH	Quarterly	1	09/02/2026	7.7
	Phosphorus (total)	mg/L	Quarterly	1	09/02/2026	22.9
	Total Suspended Solids	mg/L	Quarterly	1	09/02/2026	12
23	BOD	mg/L	Quarterly	1	09/02/2026	26
	Nitrogen (total)	mg/L	Quarterly	1	09/02/2026	5.2
	Oil and Grease	mg/L	Quarterly	1	09/02/2026	17
	pH	pH	Quarterly	1	09/02/2026	7.5
	Phosphorus (total)	mg/L	Quarterly	1	09/02/2026	0.4
	Total Suspended Solids	mg/L	Quarterly	1	09/02/2026	16
48	BOD	mg/L	Quarterly	1	09/02/2026	33
	Nitrogen (total)	mg/L	Quarterly	1	09/02/2026	23.1
	Oil and Grease	mg/L	Quarterly	1	09/02/2026	18
	pH	pH	Quarterly	1	09/02/2026	7.6
	Phosphorus (total)	mg/L	Quarterly	1	09/02/2026	2.4
	Total Suspended Solids	mg/L	Quarterly	1	09/02/2026	36
53	BOD	mg/L	Quarterly	1	24/02/2026	3
	Nitrogen (total)	mg/L	Quarterly	1	24/02/2026	49.5
	Oil and Grease	mg/L	Quarterly	1	24/02/2026	<5
	pH	pH	Quarterly	1	24/02/2026	7
	Phosphorus (total)	mg/L	Quarterly	1	24/02/2026	12
	Total Suspended Solids	mg/L	Quarterly	1	24/02/2026	3

**MONTHLY ENVIRONMENTAL MONITORING REPORT**

For the Month Ending 28 February 2026

**Discharge Points**

EPL ID	Pollutant	Unit of Measure	No. of samples required by Licence	No. of Samples collected and analysed	Min Value	Mean Value	Max Value	100 <sup>th</sup> percentile concentration limit	Exceedance (Yes/No)
1	Conductivity	µS/cm	Continuous during discharge	No licensed discharges during the period				619	No
	Oil and Grease	mg/L	Weekly during discharge					10	No
	pH	pH	Continuous during discharge					6.5-8.5	No
	Total Suspended Solids	mg/L	Weekly during discharge					50	No
	Turbidity	NTU	Continuous during discharge					25	No
	Discharge Volume	Megalitres per day	Continuous during discharge					20 <sup>1</sup>	No
2	Conductivity	µS/cm	Continuous during discharge	No licensed discharges during the period				619	NA
	Oil and Grease	mg/L	Daily during discharge					10	NA
	pH	pH	Continuous during discharge					6.5-8.5	NA
	Total Suspended Solids	mg/L	Daily during discharge					50	NA
	Turbidity	NTU	Continuous during discharge					25	NA
	Discharge Volume	Megalitres per day	Continuous during discharge					NA	NA
24	pH	pH	Daily during discharge	No licensed discharges during the period				6.5-8.5	NA
	Total Suspended Solids	mg/L	Daily during discharge					50	NA
	Turbidity	NTU	Daily during discharge					25	NA
26	pH	pH	Daily during discharge	No licensed discharges during the period				6.5-8.5	NA
	Total Suspended Solids	mg/L	Daily during discharge					50	NA
	Turbidity	NTU	Daily during discharge					25	NA
28	Conductivity	µS/cm	Continuous during discharge	No licensed discharges during the period				619	NA
	Oil and Grease	mg/L	Daily during discharge					10	NA
	pH	pH	Continuous during discharge					6.5-8.5	NA
	Total Suspended Solids	mg/L	Daily during discharge					50	NA
	Turbidity	NTU	Continuous during discharge					25	NA

**MONTHLY ENVIRONMENTAL MONITORING REPORT**

For the Month Ending 28 February 2026

EPL ID	Pollutant	Unit of Measure	No. of samples required by Licence	No. of Samples collected and analysed	Min Value	Mean Value	Max Value	100 <sup>th</sup> percentile concentration limit	Exceedance (Yes/No)
	Discharge Volume	Kilolitres per day	Continuous during discharge					NA	NA
29	pH	pH	Daily during discharge	No licensed discharges during the period				6.5-8.5	NA
	Total Suspended Solids	mg/L	Daily during discharge					50	NA
	Turbidity	NTU	Daily during discharge					25	NA
31	pH	pH	Daily during discharge	No licensed discharges during the period				6.5-8.5	NA
	Total Suspended Solids	mg/L	Daily during discharge					50	NA
	Turbidity	NTU	Daily during discharge					25	NA
35	pH	pH	Daily during discharge	No licensed discharges during the period				6.5-8.5	NA
	Total Suspended Solids	mg/L	Daily during discharge					50	NA
	Turbidity	NTU	Daily during discharge					25	NA
51	pH	pH	Daily during discharge	No licensed discharges during the period				6.5-8.5	NA
	Total Suspended Solids	mg/L	Daily during discharge					50	NA
	Turbidity	NTU	Daily during discharge					25	NA

1 Only applies when mining operations at the premises include that undertaken in the areas "UG4".