



# MOOLARBEN COAL PROJECT 2025 COMPLIANCE REPORT

EPBC 2007/3297

EPBC 2013/6926

EPBC 2008/4444

EPBC 2017/7974

<b>Project Name</b>	Moolarben Coal Complex
<b>Approval Holder</b>	Moolarben Coal Mines Pty Ltd Moolarben Coal Operations Pty Ltd
<b>EPBC Reference</b>	2007/3297 2013/6926 2008/4444 2017/7974
<b>Approved Actions</b>	<p>The establishment of a coal mine and associated infrastructure 40 kilometres (km) north-east of Mudgee, New South Wales (NSW) to generate approximately 10 million tonnes per annum of product coal and as described in the referral received under the <i>Environment Protection and Biodiversity Conservation Act 1999</i> (Cth) (EPBC Act) on 16 February 2007 (EPBC 2007/3297).</p> <p>To modify and extend the Moolarben Coal Project (Stage 1), approximately 40 km north-east of Mudgee, NSW (EPBC 2013/6926).</p> <p>To develop a new open cut coal mine and two underground coal mines, 40 km north-east of Mudgee, NSW and as described in the referral received under the EPBC Act on 9 September 2008 and the request for variation received under the EPBC Act on 27 February 2012 (EPBC 2008/444).</p> <p>To modify and extend the Moolarben Coal Project (Stage1 and Stage 2), 40 km north of Mudgee, NSW (EPBC 2017/7974).</p>
<b>Reporting Period</b>	1 January 2025 to 31 December 2025
<b>Version</b>	1
<b>Declaration of Accuracy</b>	
<p>In making this declaration, I am aware that sections 490 and 491 of the <i>Environment Protection and Biodiversity Conservation Act 1999</i> (Cth) (EPBC Act) make it an offence in certain circumstances to knowingly provide false or misleading information or documents. The offence is punishable on conviction by imprisonment or a fine, or both. I declare that all the information and documentation supporting this compliance report is true and correct in every particular. I am authorised to bind the approval holder to this declaration and that I have no knowledge of that authorisation being revoked at the time of making this declaration.</p>	
<b>Signature of authorised reporting officer</b>	
<b>Name of authorised reporting officer</b>	Ian Flood
<b>Title of authorised reporting officer</b>	Environment and Community Manager
<b>Date</b>	27 March 2026
<b>Organisation Name</b>	Moolarben Coal Operations Pty Ltd
<b>Organisation ACN</b>	077 939 569

## TABLE OF CONTENTS

<b>1.0 INTRODUCTION.....</b>	<b>3</b>
<b>2.0 DESCRIPTION OF ACTIVITIES.....</b>	<b>3</b>
<b>3.0 COMPLIANCE TABLES (2007/3297) .....</b>	<b>6</b>

**Appendix A: Moolarben Coal Annual Summaries – BOA Flora and Fauna Monitoring**

**Appendix B: Moolarben Coal Annual Summaries – Rehabilitation Flora and Fauna Monitoring**

**Appendix C: Summary of Weed Management Activities**

**Appendix D: Summary of Revegetation Works**

## 1.0 INTRODUCTION

The Moolarben Coal Complex (MCC) is located in the Western Coalfields of New South Wales (NSW) approximately 40 kilometres (km) north of Mudgee to the south-east of Ulan. The MCC is located within the Mid-Western Regional Local Government Area. Figure 1 depicts the regional location of the Biodiversity Offset Areas (BOAs) and the MCC and Table 1 summarises the MCC offsets by approval.

Moolarben Coal Operations Pty Ltd (MCO) is the operator of the MCC on behalf of the Moolarben Joint Venture (Moolarben Coal Mines Pty Ltd [MCM], Yancoal Moolarben Pty Ltd [YM] and a consortium of Korean power companies). MCO, MCM and YM are wholly owned subsidiaries of Yancoal Australia Limited (Yancoal).

All mining operations are conducted in accordance with NSW Project Approval (05\_0117) (Moolarben Coal Project Stage 1) as modified, and NSW Project Approval (08\_0135) (Moolarben Coal Project Stage 2) as modified. Current mining operations undertaken across the MCC are approved until 31 December 2038.

The current mining operations are undertaken in accordance with Approval Decisions: EPBC 2007/3297, EPBC 2013/6926, EPBC 2008/4444 and EPBC 2017/7974 under the Commonwealth *Environment Protection and Biodiversity Conservation Act 1999* (EPBC Act).

This report details the activities and compliance with EPBC 2007/3297, EPBC 2013/6926, EPBC 2008/4444 and EPBC 2017/7974 for the period 1 January 2025 to 31 December 2025.

**Table 1: EPBC Approval BOAs**

EPBC Approval	Offset		
2007/3297	• Area 1 (Sydney Basin)	• Area 2 (Moolarben)	• Area 3 (Property 6)
2013/6926	• Elward • Bobadeen West	• Bobadeen East • Clifford	• Area 3 (Property 5) • Clarke
2008/4444	• Old Bobadeen • Ulan 18 • Libertus	• On-site • Avisford 2 • Avisford 1	• Dun Dun West • Dun Dun East
2017/7974	• Area 1 (Sydney Basin)	• Rehabilitation (Credits)	• Gilgal (Credits)
Non EPBC offsets	• Moolarmoo	• Property 24/25	

## 2.0 DESCRIPTION OF ACTIVITIES

During the reporting period the following activities, specific to the EPBC approval areas, have been undertaken:

- Land preparation and disturbance in accordance with the Vegetation Clearance Protocol and Landscape Management Plan (VCPLMP), including pre-clearance surveys, salvage of habitat features and fauna management within action areas.
- Collection of local provenance native seed for revegetation and rehabilitation projects.
- Removal of historically accumulated rubbish/in situ buildings and infrastructure (focus on Elward rubbish removal and Dun Dun fencing removal during 2025).
- BOA management including fencing, access track maintenance, weed and vertebrate pest management.
- Pest management was undertaken across the following BOAs: Area 1, Area 2, Bobadeen, Clarke, Clifford, Dun Dun East, Dun Dun West (Nori), Gilgal, Libertus, Onsite offset, Property 24/25, Ulan 18, including open range shooting and 1080 baiting for foxes, wild dogs and feral pigs, and mustering

and removal of wild goats. The following pest numbers were confirmed as removed through shooting during the reporting period: 306 feral pigs, 328 wild goats, four fallow deer and four foxes. Exact baiting numbers cannot be confirmed however trail camera records show that there were high levels of consumption of baited grain by feral pigs at most baiting sites.

- Continued assisted revegetation across relevant BOAs including planting of approximately 6,240 stems to supplement natural regeneration at the On-site offset, 22,680 stems in the Bobadeen West BOA and 1,680 stems at Moolarmoo offset.
- Scheduled land management activities under the Gilgal BOA Biodiversity Stewardship Agreement Management Plan, executed under the *Biodiversity Conservation Act 2016* (BC Act), including fencing, weed management, rubbish removal and track maintenance.
- Progressing the formal retirement of Gilgal BOA credits with the Department of Planning, Housing and Infrastructure (DPHI).
- Monitoring in accordance with the Biodiversity Offset Management Plan (BOMP), EPBC 2008/4444 Biodiversity and Offset Management Plan, Landscape Management Plan (LMP), Rehabilitation Management Plan (RMP) and Gilgal BOA Biodiversity Stewardship Agreement Management Plan.

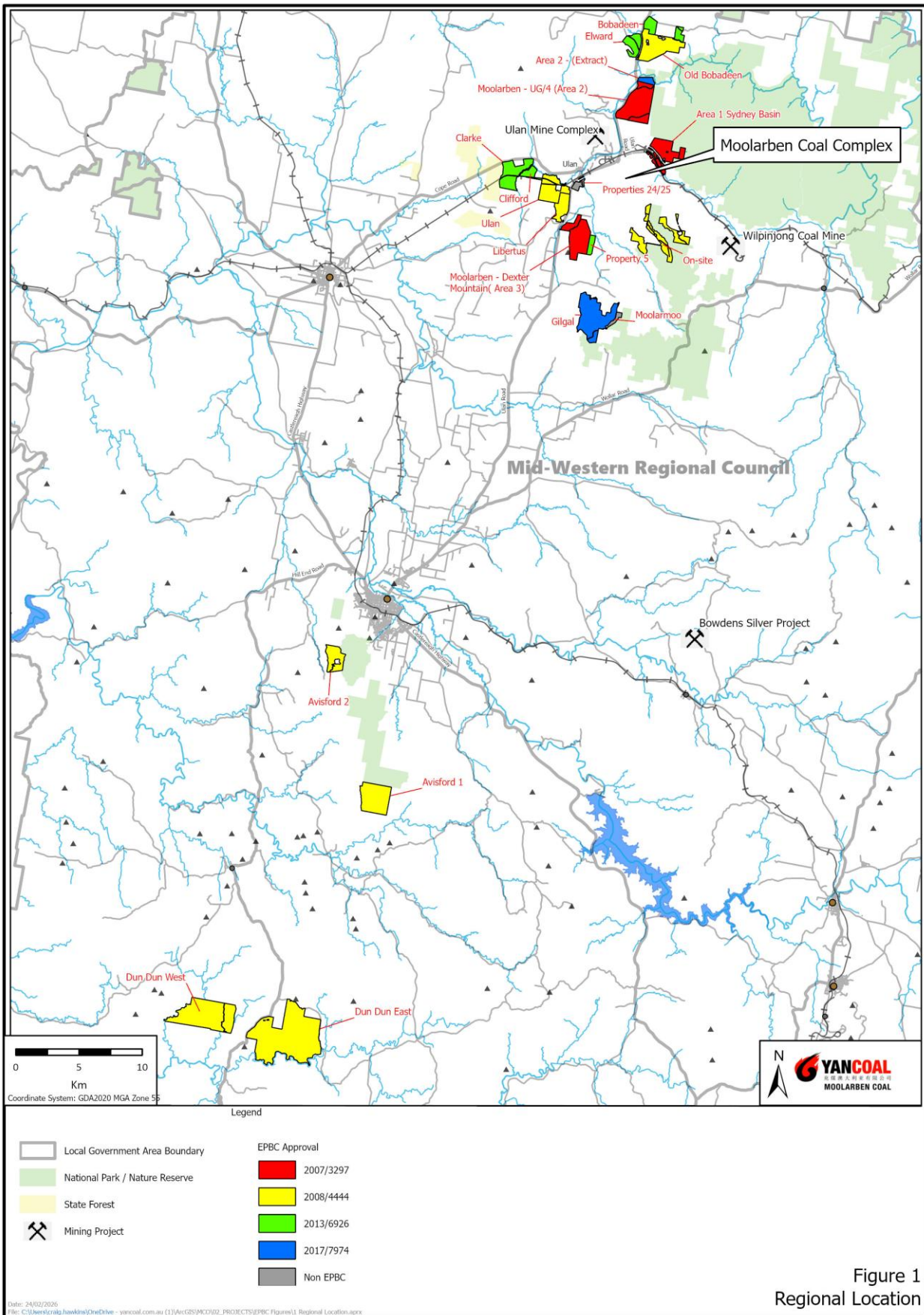


Figure 1  
 Regional Location

Figure 1: Regional Location of Biodiversity Offset Areas

### 3.0 COMPLIANCE TABLES (2007/3297) (2008/4444) (2013/6926)

Condition Number	Condition	Compliance <sup>1</sup>	Evidence/Comments
EPBC 2007/3297			
1	In order to protect the White Box-Yellow Box-Blakely's Red Gum Grassy Woodland and Derived Native Grassland listed ecological community, the person taking the action shall make suitable arrangements within 12 months of this approval to:  (a) Transfer at least 130 hectares of the White Box-Yellow Box-Blakely's Red Gum Woodland and Derived Native Grassland listed ecological community to the NSW Minister for Climate Change Environment and Water offset, on a "like for like" basis, the 65 hectares that would be cleared by the project at an offset ratio of 2:1; and  (b) Provide the NSW Department of Environment and Climate Change (DECC) with funds (which at the discretion of DECC may include an in-kind contribution) to cover any reasonable costs associated with the transfer and ongoing management of this land.	Compliant	Completed prior to period.
1A	The approval holder must undertake the action within the area enclosed by the red line designated as 'DA Boundary' in the map at Appendix 1. The approval holder must not undertake the action within the areas designated as 'Areas not part of the Action' in the map at Appendix 1.	Compliant	Noted. Action undertaken within the Development Area Boundary and not undertaken within the areas designated as 'Areas not part of the Action'.
2	In order to protect the White Box-Yellow Box-Blakely's Red Gum Grassy Woodland and Derived Native Grassland listed ecological community, the person taking the action shall in accordance with the Rehabilitation and Offset Management Plan (See Condition 3 below):  (a) Revegetate at least 38 hectares of disturbed land on the "Red Hills" property with Yellow Box-White Box-Blakely's Red Gum vegetation;  (b) Revegetate at least 143 hectares of cleared land on the "Red Hills" property with suitable native vegetation to improve wildlife corridor linkages;  (c) Conserve and enhance at least 1211 hectares of existing native vegetation onsite within the areas marked with green crosshatching designated as 'Biodiversity Offset Area' shown in the map at Appendix 2; and  (d) make arrangements, as approved in writing by the Minister, to protect these offset areas from development for the long term.	Compliant	Revegetation works were commenced in a prior period. MCO continues to conserve and enhance Area 1, Area 2 and Area 3. Area 1, Area 2 and Area 3 were secured in a prior reporting period by the registering on title a 'Positive Covenant' and a 'Restriction on the Use of Land by a Prescribed Authority' under section 88E(3) of the NSW <i>Conveyancing Act 1919</i> .
3	In order to protect the White Box-Yellow Box-Blakely's Red Gum Grassy Woodland and Derived Native Grassland listed ecological community, the person taking action shall prepare and implement a detailed	Compliant	The LMP was approved by the Department of Agriculture, Water and the Environment (DAWE <sup>1</sup> ) in <b>2011</b> .

<sup>1</sup> References to DAWE includes the previous relevant commonwealth agencies responsible for administering the EPBC Act.

Condition Number	Condition	Compliance <sup>1</sup>	Evidence/Comments
	<p>Rehabilitation and Offsets Management Plan for the project to the satisfaction of the Minister for the Environment and Water Resources. The proponent shall progressively rehabilitate the site to the satisfaction of Minister for the Environment and Water Resources and the NSW Department of Primary Industries, in general accordance with the proposed Rehabilitation and Offset Management Plan. The rehabilitation and Offset Management Plan must include:</p> <p>(a) The rehabilitation objectives for the site, vegetation offsets and landscaping;</p> <p>(b) A description of the short, medium and long-term measures that would be implemented to:</p> <ul style="list-style-type: none"> <li>• Rehabilitate the site</li> <li>• Implement the vegetation offsets; and</li> <li>• Landscape the environmental bunds;</li> </ul> <p>(c) Performance and completion criteria for the rehabilitation of the site, implementation of the vegetation offsets, and landscaping of the environmental bunds;</p> <p>(d) A detailed description of the measures that would be implemented over the next 3 years including the progressive rehabilitation of mining areas and progressive implementation of the vegetation offset areas referred to in Condition 2.</p> <p>(e) A program to monitor the effectiveness of these measures, and progress against the performance and completion criteria (see (c) above);</p> <p>(f) A description of the potential risks to successful rehabilitation and/or revegetation, and a description of the contingency measures that would be implemented to mitigate these risks; and</p> <p>(g) Details of who would be responsible for monitoring, reviewing, and implementing the plan.</p> <p>Coal mining operations must not commence until the plan has been approved. The approved plan must be implemented.</p>		<p>The NSW Project Approval RMP was updated in accordance with the Resources Regulator amendments to Mining Lease conditions relating to rehabilitation through amendments to the Regulation under the Mining Act 1992. The latest revision of the RMP was undertaken in March 2025.</p> <p>This report.</p>
4	<p>The person taking the action must publish a report on their website addressing compliance with each of the conditions of this approval, by 31 March for the preceding calendar year. Annual reports must be published until the Minister is satisfied that the person taking the action has complied with all conditions of the approval. Documentary evidence providing proof of the date of publication must be provided to the Department at the same time as the compliance report is published.</p>	Compliant	This report.
5	<p>Upon the direction of the Minister, the person taking the action must ensure that an independent audit of compliance with the conditions of approval is conducted and a report submitted to the Minister'. The independent auditor must be approved by the Minister prior to the commencement of the audit. Audit criteria must be agreed to by the Minister and the audit report must address the criteria to the satisfaction of the Minister</p>	Compliant	Noted.
6	<p>If the Minister believes that it is necessary or desirable for the better protection of the listed threatened species and ecological communities to do so, the Minister may request that the person taking the</p>	Compliant	Noted.

Condition Number	Condition	Compliance <sup>1</sup>	Evidence/Comments
	action make specified revisions to the plans, reports or management strategies approved pursuant to paragraphs 1, 2 and 3, and submit the revised plan, report or strategy for the Minister's approval. The person taking the action must comply with any such request. The revised approve plan, report or strategy must be implemented.		
7	If at any time after 5 years from the date of this approval, the Minister notifies the person taking the action in writing that the Minister is not satisfied that there has been substantial commencement of coal mining operations, the action must not thereafter be commenced without the written agreement of the Minister.	Compliant	Action commenced <b>2009</b> .
EPBC 2008/4444			
1	The approval holder must not clear more than 1, 534 hectares of native vegetation within the defined footprint at Schedule 1.	Compliant	At the end of the reporting period <b>1,011 Ha</b> of the approved <b>1,534 Ha</b> of native vegetation within the defined footprint had been disturbed. Refer to Figure E1.
2	To mitigate the impacts of the proposal on the Large-eared Pied Bat, Southern Long-eared Bat, Regent Honeyeater, Swift Parrot and the Spotted-tail Quoll, the approval holder must prepare and submit, prior to the proposed date of commencement of the action, a mine site Vegetation Clearance Protocol and Landscape Management plan (VCPLMP) for the Minister's written approval. The VCPLMP must; <ol style="list-style-type: none"> <li>Delineate areas to be cleared, describe pre-clearance survey methods, specify actions to minimise fauna impacts and detail vegetation clearance procedures.</li> <li>Require collection and stockpiling of habitat features important to threatened fauna species for reinstatement in rehabilitation areas.</li> <li>Require use of native, locally sourced seed for propagation for rehabilitation activates.</li> <li>Specify a two stage clearing protocol where non-habitat trees are cleared 24 hours prior to any habitat trees are cleared, to encourage fauna to move out of an area.</li> </ol> The approval holder must not commence until the VCPLMP is approved by the Minister. The approved VCPLMP must be implemented.	Compliant	The VCPLMP was approved by the minister on <b>29 May 2015</b> . Action commenced <b>2 August 2015</b> . The VCPLMP continues to be implemented.
3	To compensate for the loss of 123.3 hectares of the White Box-Yellow Box- Blakely's Red Gum Grassy Woodland and Derived Native Grassland (WBGW) ecological community and 902 hectares of habitat for <b>EPBC listed threatened species</b> , the approval holder must submit, by 1 September 2021, a Biodiversity Offset Management Plan (BOMP) for the <b>Minister's</b> written approval. The BOMP must: <ol style="list-style-type: none"> <li>include offset attributes, shapefiles, textual descriptions and maps that clearly define the location and boundaries of the offset areas specified at Figures 1-7 of Schedule 2;</li> <li>include a survey, and describe the condition of, the offset areas specified at Figures 1-7 of Schedule 2, immediately prior to them being managed as offset areas;</li> <li>for the offset areas shown at Figures 1-3 and 6-7 of Schedule 2:                             <ol style="list-style-type: none"> <li>specify strategies and management actions that will improve the quality of WBGW and habitat for <b>EPBC listed threatened species</b>;</li> </ol> </li> </ol>	Compliant	The BOMP was approved by the DAWE on <b>14 December 2021</b> .

Condition Number	Condition	Compliance <sup>1</sup>	Evidence/Comments
	<p>(ii) include timeframes for management actions;</p> <p>(iii) specify performance and completion criteria for achieving (i) above, for evaluating effectiveness of the management of the offset areas, and criteria for triggering remedial action;</p> <p>(iv) include a program to detect trigger criteria and monitor and report on the effectiveness of management actions, and progress against the performance and completion criteria;</p> <p>(v) describe potential risks to achieving the plans objectives, measures that will be implemented to mitigate against these risks and remedial actions that will be implemented if defined trigger criteria are detected; and</p> <p>(vi) detail of who will be responsible for monitoring, reviewing, and implementing the BOMP.</p> <p>d. for offset areas shown at Figure 4 and 5 of Schedule 2, explain how management of the offset areas will ensure the quality of WBGW and habitat for EPBC listed threatened species in the offset areas will be improved and protected for the period of approval.</p> <p>If, after 1 December 2021, the <b>Minister</b> informs the approval holder that the submitted BOMP (required by 1 September 2021) is not suitable for approval, the <b>Minister</b> may, after 1 February 2022, approve a version of the BOMP revised by the <b>Department</b>.</p> <p>The approved BOMP must be published on the approval holder's internet web site, within 1 month of being approved by the <b>Minister</b> and remain so published for the period of approval. The approval holder must implement the BOMP approved by the <b>Minister</b> in writing.</p>		
4	<p>To compensate for the loss of 123.3 hectares of the White Box-Yellow Box-Blakely's Red Gum Grassy Woodland and Derived Native Grassland (WBGW) ecological community and 902 hectares of habitat for EPBC listed threatened species, within 24 months of the date of this approval, the approval holder must secure the lands identified as the Offset Areas at Schedule 2 (Figures 1-7) of this notice as a biodiversity offset by a legal instrument under relevant nature conservation legislation on the title of the land. This instrument must:</p> <p>a. Provide for the protection of the land in perpetuity;</p> <p>b. Prevent any future development activities, including mining and mineral extraction;</p> <p>c. Ensure the active management of the land; and</p> <p>d. Be provided to the Department within 3 months of it being issued, as evidence of compliance with this condition.</p>	Compliant	Eight BOAs (Old Bobadeen, On-site, Avisford 1, Avisford 2, Libertus, Ulan 18, Dun Dun East, and Dun Dun West) were secured in accordance with Condition 4 of EPBC 2008/4444 in a previous reporting period.
5	The approval holder must undertake management and monitoring of water resources in accordance with this project approval for Application Number 08-0135 issued by the NSW Planning Assessment	Compliant	Moolarben Complex Water Management Plan (WAMP).

Condition Number	Condition	Compliance <sup>1</sup>	Evidence/Comments
	Commission under the Environmental Planning and Assessment Act 1979 (NSW) on 30 January 2015.		MCO 2025 Annual Review
6	Upon request, the approval holder shall supply the groundwater monitoring data for the Moolarben Coal Project to the Department, NSW Government agencies, Operators of the Ulan and/or Wilpinjong mines or other adjacent mine operators. A protocol for the supply of the data will be included in the project's Water Management Plan.	Compliant	Section 5.5 of the Moolarben Complex WAMP.
7	The approval holder must make available for the Minister on request, all plans or programs and any review of plans or programs produced pursuant to Condition 5.	Compliant	Noted. No requests received during the 2025 reporting period.
8	Within 30 days after the commencement of the action, the approval holder must advise the Department in writing of the actual date of commencement.	Compliant	Completed in a previous period. Action commenced <b>2 August 2015</b> . Notification in writing sent on <b>13 August 2015</b> .
9	The approval holder must maintain accurate records substantiating all activities associated with or relevant to these conditions of approval, including measures taken to implement the BOMP and VCPLMP, and make them available upon request to the Department. Such records may be subject to audit by the Department or an independent auditor in accordance with section 458 of EPBC Act, or used to verify compliance with the conditions of approval. Summaries of audits will be posted on the Department's website. The results of audits may also be publicised through the general media.	Compliant	Noted.
10	The approval holder must publish a report on their website addressing compliance with each of the conditions of this approval, including implementation of the BOMP and VCPLMP as specified in the conditions, by 31 March for the preceding calendar year. Documentary evidence providing proof of the date of publication must be provided to the Department at the same time as the compliance report is published.	Compliant	This report.
11	Non-compliance with any of the conditions of this approval must be reported to the Department within 2 business days of becoming aware of the non-compliance.	Compliant	Noted.
12	Upon the direction of the Minister, the approval holder must ensure that an independent audit of compliance with the conditions of approval is conducted and a report submitted to the Minister. The independent auditor must be approved by the Minister prior to the commencement of the audit. Audit criteria must be agreed to by the Minister and the audit report must address the criteria to the satisfaction of the Minister.	Not Applicable	Noted.
13	If the approval holder wishes to carry out any activity otherwise than in accordance with the Plans as specified in the conditions, the approval holder must submit to the Department for the Minister's written approval a revised version of that Plan. The approval holder must not commence the varied activity until the Minister has approved the varied Plan in writing. The Minister will not approve a varied	Not Applicable	Noted.

Condition Number	Condition	Compliance <sup>1</sup>	Evidence/Comments
	plan unless the revised Plan would result in an equivalent or improved environmental outcome over time. If the Minister approves the revised Plan, that Plan must be implemented in place of the Plan originally approved.		
14	If the Minister believes that it is necessary or convenient for the better protection of listed threatened species and ecological communities to do so, the Minister may request that the approval holder make specified revisions to the Plan specified in the conditions and submit the revised Plan for the Minister's written approval. The approval holder must comply with any such request. The revised approved Plan must be implemented. Unless the Minister has approved the revised Plan then the approval holder must continue to implement the plan originally approved.	Not Applicable	Noted.
15	If, at any time after 5 years from the date of this approval, the approval holder has not substantially commenced the action, then the approval holder must not substantially commence the action without the written agreement of the Minister.	Compliant	Action commenced <b>2 August 2015</b> .
EPBC 2013/6926			
1	The approval holder must not clear more than 171.4 hectares of native vegetation within the defined footprint at Schedule 1, Figures 1 and 2.	Compliant	At the end of the period <b>155 Ha</b> of the approved <b>171.4 Ha</b> of native vegetation within the defined footprint had been disturbed. Refer to Figure E1.
2	To assist in mitigating the impacts of the proposal on the Large-eared Pied Bat, Southern Long-eared Bat, Regent Honeyeater, Swift Parrot, Spotted-tail Quoll and the Koala, the approval holder must prepare and submit a mine site Vegetation Clearance Protocol and Landscape Management Plan (VCPLMP) for the Minister's written approval. The VCPLMP must; <ol style="list-style-type: none"> <li>Delineate areas to be cleared, describe pre-clearance survey methods, specify actions to minimise fauna impacts and details vegetation clearance procedures.</li> <li>Require collection and stockpiling of habitat features important to threatened fauna species for reinstatement in rehabilitation areas.</li> <li>Require use of native, locally sourced seed for propagation for rehabilitation activities.</li> <li>Specify a two stage clearing protocol where non-habitat trees are cleared 24 hours prior to any habitat trees in their proximity being cleared, to encourage fauna to move out of an area.</li> <li>Include a revegetation strategy to improve connectivity between isolated vegetation patches (including between Munghorn Gap Nature Reserve, Goulburn River National Park and Dexter Mountain).</li> </ol>	Compliant	The VCPLMP was approved by the Minister on <b>17 December 2014</b> . The VCPLMP continues to be implemented.
3	The approval holder must not commence until the VCPLMP is approved by the Minister. The approved VCPLMP must be implemented.	Compliant	The VCPLMP was approved by the Minister on <b>17 December 2014</b> .

Condition Number	Condition	Compliance <sup>1</sup>	Evidence/Comments
			Action commenced on <b>23 December 2014</b> . The VCPLMP continues to be implemented.
4	<p>To compensate for the loss of 16.5 hectares of the White Box-Yellow Box-Blakely's Red Gum Grassy Woodland and Derived Native Grassland (WBGW) ecological community and 171.4 hectares of habitat for EPBC listed threatened species, the approval holder must prepare and submit a Biodiversity Offset Management Plan (BOMP) for the proposed EPBC offset sites, for the Minister's written approval. The BOMP must;</p> <p>a. Identify those lands described as the Offset Areas at Schedule 2 (Figures 1-5) of this notice that are necessary to achieve the outcomes required by the Environmental Offsets Policy 2012 (or subsequent published revisions). This must include offset attributes, shapefiles, textual descriptions and maps clearly define the location and boundaries of the offset area(s).</p> <p>b. Provide a survey and description of the current condition (prior to any management activities) of the offset areas identified in Condition 4a.</p> <p>c. Details management actions and regeneration and revegetation strategies to be undertaken on the offset areas to improve the ecological quality of these areas, including:</p> <p>(i) A description and timeframe of measures that would be implemented to improve the condition of the ecological communities on the site;</p> <p>(ii) Performance and completion criteria for evaluating the management of the offset area, and criteria triggering remedial action;</p> <p>(iii) A program to monitor and report on the effectiveness of these measures, and progress against the performance and completion criteria;</p> <p>(iv) A description of potential risks to the successful implementation of the plan, a description of the measures that will be implemented to mitigate against these risks and a description of the contingency measures that will be implemented if defined triggers arise; and</p> <p>(v) Details of who would be responsible for monitoring, reviewing, and implementing the plan.</p>	Compliant	<p>A BOMP was approved by the Minister on <b>17 December 2014</b>.</p> <p>The requirements of this condition are addressed in the below section of the BOMP:</p> <p>a) Section 2 and Appendix 1 b) Section 3 c) Sections 4, 5, 6 &amp; 7.</p> <p>On 15 May 2025 the DCCEEW and DPHI commenced a combined compliance audit to determine if Moolarben Coal Operations (MCO) were complying with the conditions of the EPBC 2013/6926, MP05_0117 and MP08_0135 approvals. During the audit it was discussed that MCO would consult with DCCEEW regarding consolidating the multiple Biodiversity Offset Management Plans (BOMPs) in use on site. Consolidating the BOMPs will involve standardising completion criteria and monitoring methodologies used across the multiple biodiversity offset areas. Work on the BOMP consolidation will be undertaken during 2026.</p>
5	The approval holder must not commence the action until the BOMP is approved by the Minister. The approved BOMP must be published on an internet web site approved by the Department, within 1 month of being approved and for a period of 5 years thereafter. The approved BOMP must be implemented.	Compliant	<p>A BOMP was approved by the Minister on <b>17 December 2014</b>.</p> <p>Action commenced on <b>23 December 2014</b>.</p> <p>The BOMP is located on MCO's website. (<a href="https://www.yancoal.com.au/our-sites/moolarben/moolarben-coal-documents/#approval">https://www.yancoal.com.au/our-sites/moolarben/moolarben-coal-documents/#approval</a>)</p> <p>The BOMP continues to be implemented.</p> <p>This report, refer to Appendices A to E.</p>
6	To compensate for the loss of 16.5 hectares of the White Box-Yellow Box-Blakely's Red Gum Grassy	Compliant	Six BOAs (Bobadeen East, Bobadeen West, Elward, Clifford,

Condition Number	Condition	Compliance <sup>1</sup>	Evidence/Comments
	Woodland and Derived Native Grassland (WBGW) ecological community and 171.4 hectares of habitat for EPBC listed threatened species, the approval holder must secure the lands identified as the Offset Areas at Schedule 2 (Figures 1-5) of this notice as a biodiversity offset by a legal instrument under relevant nature conservation legislation on the title of the land. This instrument must: a. Provide for the protection of the land in perpetuity; b. Prevent any future development activities, including mining and mineral extraction; and c. ensure the active management of the land. The approval holder must not commence the action until the Department has approved the proposed instrument in writing.		Clarke and Property 5) were secured in accordance with Condition 6 of EPBC 2013/6926 in a previous reporting period.  The Department approved the protection mechanism for offsets under EPBC 2013/6926 on <b>17 December 2014</b> .
7	The approval holder must provide evidence to the Department of their compliance with Condition 6, along with offset attributes, shapefiles and textual descriptions and maps to clearly define the location and boundaries of the offset sites, prior to the commencement of the action.	Compliant	Completed in a previous period. Evidence including shapefiles provided on <b>1 December 2014</b> .
8	Within 30 days after the commencement of the action, the approval holder must advise the Department in writing of the actual date of commencement.	Compliant	Completed in a previous period. Notification in writing sent on <b>20 January 2015</b> .
9	The approval holder must maintain accurate records substantiating all activities associated with or relevant to these conditions of approval, including measures take to implement the BOMP and VCPLMP, and make them available upon request to the Department. Such records may be subject to audit by the Department or an independent auditor in accordance with Section 458 of the EPBC Act, or used to verify compliance with the conditions of approval. Summaries of audits will be posted on the Department's website. The results of audits may be publicised through the general media.	Compliant	Noted.
10	The approval holder must publish a report on their website addressing compliance with each of the conditions of this approval, including implementation of the BOMP and VCPLMP as specified in the conditions, by 31 March for the preceding calendar year. Documentary evidence providing proof of the date of publication must be provided to the Department at the same time as the compliance report is published.	Compliant	This report.
11	Non-compliance with any of the conditions of this approval must be reported to the Department within 2 business days of becoming aware of the non-compliance.	Compliant	Noted.
12	Upon the direction of the Minister, the approval holder must ensure that an independent audit of compliance with the conditions of approval is conducted and a report submitted to the Minister. The independent auditor must be approved by the Minister prior to the commencement of the audit. Audit criteria must be agreed to by the Minister and the audit report must be address the criteria to the satisfaction of the Minister.	Not Applicable	Noted.
13	If the approval holder wishes to carry out any activity otherwise than in accordance with the Plan as specified in the conditions, the approval holder must submit to the Department for the Minister's	Not Applicable	Noted.

Condition Number	Condition	Compliance <sup>1</sup>	Evidence/Comments
	written approval a revised version of the Plan. The approval holder must not commence the varied activity until the Minister has approved the varied Plan in writing. The Minister will not approve a varied Plan unless the revised Plan would result in an equivalent or improved environmental outcome over time. If the Minister approves the revised Plan, that Plan must be implemented in place of the Plan originally approved.		
14	If the Minister believes that it is necessary or convenient for the better protection of listed threatened species and ecological communities to do so, the Minister may request that the approval holder make specified revisions to the Plan specified in the conditions and submit the revised Plan for the Minister's written approval. The approval holder must comply with any such request. The revised approved Plan must be implemented. Unless the Minister has approved the revised Plan then the approval holder must continue to implement the Plan originally approved.	Not Applicable	Noted.
15	If, at any time after 5 years from the date of this approval, the approval holder has not substantially commenced the action, then the approval holder must not substantially commence the action without the written agreement of the Minister.	Compliant	Action commenced <b>23 December 2014</b> .
EPBC 2017/7974			
1	The approval holder must undertake the Moolarben Coal Project within the development footprint.	Compliant	Noted.
2	The approval holder must comply with Condition 34A of Schedule 3 of the NSW Consolidated Project Approvals to implement the supplementary offset strategy, by retiring the required number of credits specified in Table 12A.	Compliant	The Gilgal BOA is owned and managed by Moolarben. During the reporting period, actions were undertaken to retire credits as specified in Table 12A of the NSW Consolidated Project Approvals with the DPHI. Ecosystem and Species Credits were formally retired on 20 February 2026 (transaction reference numbers CT-18575, CT-18580, CT-18584, CT-18586, CT-18592, CT-18595).  A Biodiversity Stewardship Agreement for the Gilgal BOA has been prepared, signed by all parties on 19 July 2024, and executed under the BC Act.
3	The approval holder must comply with Conditions 35A of the NSW Consolidated Project Approvals to secure the credits and/or area at the Gilgal Offset Area (as identified at Attachment B) under a Biodiversity Stewardship Agreement, unless otherwise agreed in writing by the Minister. The approval holder may seek agreement from the Minister to use an alternative mechanism to secure the credits and/or area, subject to the additional rules at Condition 20. The approval holder must submit a copy of the Biodiversity Stewardship Agreement to the Minister within ten business days of an agreement being made.	Compliant	MCO submitted an application in accordance with Condition 35A of the NSW Consolidated Project Approvals to secure the credits and area at the Gilgal BOA under a Biodiversity Stewardship Agreement. The application has been prepared and signed by all parties on 19 July 2024 and executed formally under the BC Act. The calculated Total Fund Deposit requirement was paid by Moolarben Coal on 24 December

Condition Number	Condition	Compliance <sup>1</sup>	Evidence/Comments
			2024.
4	The approval holder must provide for the long-term security of the Area 2 (extract) offset area as identified at Attachment B, by 30 June 2020. The approval holder must submit details of the security mechanism to the Minister within ten business days of the mechanism being made.	Compliant	<p>Area 2 (Extract) offset was secured on <b>25 August 2020</b>, post the required due date.</p> <p>MCO advised the DAWE on <b>24 June 2020</b> that the offsets security mechanism were in the final stages of execution and requested an Extension of time to <b>31 August 2020</b> to align with the offset security timing as approved by the NSW Department of Planning, Industry and Environment (DPIE) for the same offset area.</p> <p>On <b>2 July 2020</b> MCO advised the DAWE of a technical non-compliance as the offset security mechanism for Area 2 (Extract) had been executed by MCO but not the NSW DPIE on 30 June 2020.</p> <p>On <b>25 August 2020</b>, a 'Positive Covenant' and a 'Restriction on the Use of Land by a Prescribed Authority' under section 88E(3) of the NSW <i>Conveyancing Act 1919</i> was executed by MCO and the NSW DPIE to secure the Area 2 (Extract).</p> <p>On <b>18 September 2020</b>, MCO provided the DAWE with a copy of the Positive and Restrictive Covenants executed by MCO and the NSW DPIE to secure the Area 2 (Extract) offset.</p>
5	The approval holder must enhance existing native vegetation in the Area 2 (extract) offset area, in accordance with the biodiversity offset strategy required by Condition 34 of the NSW Consolidated Project Approvals, and in accordance with the Biodiversity Management Plan required by Condition 36 of Schedule 3 of the NSW Consolidated Project Approvals.	Compliant	<p>During the reporting period MCO continued works to maintain and enhance the existing native vegetation in the Area 2 (Extract) BOA, primarily through weed management and vertebrate pest control across the broader area.</p> <p>The Area 2 (Extract) BOA is displaying good levels of natural regeneration occurring across most previously cleared areas, therefore MCO is not planning further disturbance in these areas by way of assisted revegetation. One area of approximately 0.5ha within the Area 2 (Extract) BOA is scheduled for tree planting/assisted revegetation during 2027. Some historic rubbish within the Area 2 (Extract) BOA</p>

Condition Number	Condition	Compliance <sup>1</sup>	Evidence/Comments
			is scheduled for cleanup and removal during 2026.
6	The approval holder must comply with Condition 35B of Schedule 3 of the NSW Consolidated Project Approvals to develop suitable rehabilitation performance and completion criteria for the rehabilitation of OC2 and/or OC3, to generate the required number of residual credits specified in Table 12A of Schedule 3.	Compliant	<p>Suitable rehabilitation performance and completion criteria for OC2 and/or OC3 have been developed by MCO with approval of the criteria granted by the NSW DPIE on <b>7 July 2020</b> in accordance with Condition 35B of Schedule 3.</p> <p>Management of all rehabilitation areas on site is undertaken in accordance with the MCO RMP.</p>
7	Unless the approval holder retires the residual credits in accordance with Condition 8, the approval holder must undertake progressive rehabilitation of OC2 and OC3, so as to meet the rehabilitation performance and completion criteria developed in accordance with Condition 6, and in accordance with an approved Rehabilitation Management Plan. The approval holder must also comply with Condition 35C of Schedule 3 of the NSW Consolidated Project Approvals to retire the residual credits if the performance and completion criteria are not achieved in the specified timeframe in Condition 35C, subject to the additional rules at Condition 20.	Compliant	<p>Noted.</p> <p>Rehabilitation monitoring is undertaken in accordance with the schedule outlined in the MCO RMP. For the rehabilitated landforms in the OC2 and OC3 areas that will generate specific residual ecosystem and species credits, monitoring is conducted every three years. On the current schedule monitoring was not required in 2025 but will be undertaken in 2026. Based on 2024 monitoring however, the following results were achieved for the Domain D OC2 rehabilitation area:</p> <ul style="list-style-type: none"> <li>- Native species richness: 5 of the 7 monitoring sites meet or exceed the benchmark target</li> <li>- Vegetation structure: when averaged across OC2, native midstorey, native groundcover grass and native groundcover are within the target range</li> <li>- Total length of logs: benchmark achieved at 5 of the 7 monitoring sites</li> <li>- Exotic cover is when assessed against the overall OC2 landform, exotic cover met the completion criteria target</li> <li>- Site Value Scores were achieved at 5 of the 7 monitoring sites</li> <li>- Koala feed trees were present in 6 of the 7 monitoring plots, although all trees were &lt;10cm</li> </ul>

Condition Number	Condition	Compliance <sup>1</sup>	Evidence/Comments
			<p>DBH due to their young age.</p> <p>Landform establishment dates in OC2 and OC3 are:</p> <ul style="list-style-type: none"> <li>- 2016: 10.7ha – performance criteria required by end of 2026</li> <li>- 2018: 33.8ha – performance criteria required by end of 2028</li> <li>- 2019: 45.1ha – performance criteria required by end of 2029</li> <li>- 2021: 34.3ha – performance criteria required by end of 2031</li> <li>- 2023: 37.4ha – performance criteria required by end of 2033</li> </ul>
8	The approval holder may retire the residual credits earlier than the specified timeframe in Condition 35C in accordance with Condition 35D of Schedule 3 of the NSW Consolidated Project Approvals, subject to the additional rules at Condition 20. If the approval holder chooses to retire credits early, the approval holder must notify the Department within 30 business days of retiring the credits.	Not Applicable	Noted.
9	The approval holder must comply with Condition 36 of Schedule 3, and Conditions 3 and 5 of Schedule 5, of the NSW Consolidated Project Approvals to prepare and implement a Biodiversity Management Plan for the Moolarben Coal Project.	Compliant	A revised Biodiversity Management Plan was approved by the NSW DPIE on <b>2 September 2020</b> .
10	The Biodiversity Management Plan implemented in accordance with Condition 9 must be approved by the Department as adequately providing for the management of protected matters on the site and in the offset areas.	Compliant	Noted. The DAWE advised MCO on <b>14 August 2020</b> that there is no requirement for the Biodiversity Management Plan to be approved under the EPBC Act.
11	The approval holder must comply with Condition 33 of Schedule 3, and Conditions 3 and 5 of Schedule 5, of the NSW Consolidated Project Approvals to prepare and implement a revised Water Management Plan for the Moolarben Coal Project.	Compliant	A revised Moolarben Complex WAMP incorporating EPBC 2017/7974 was approved by DPE on <b>21 October 2020</b> . The WMP continues to be implemented.
12	The approval holder must comply with the timing and content requirements of Condition 32A of Schedule 3 of the NSW Consolidated Project Approvals for the completion of an Independent Water Quality Study (IQWS).	Compliant	Completed in a previous period. The Independent Water Quality Study (IWQS), in accordance with Condition 32A was required by <b>1 December 2021</b> . An

Condition Number	Condition	Compliance <sup>1</sup>	Evidence/Comments
			Extension of Time was granted by NSW Department of Planning and Environment (DPE) until <b>30 April 2023</b> . The IWQS was submitted in accordance with Condition 32A with DPE acknowledging that all requirements of Condition 32A had been met on <b>27 July 2023</b> .
13	The approval holder must ensure that the performance measures recommended in the IQWS are incorporated in a revised version of the Water Management Plan within 12 months of the IWQS being completed, and must implement the revised Water Management Plan.	Not Applicable	Completed in a previous period. The IWQS was approved by the NSW DPE on <b>27 July 2023</b> . A revised version of the Moolarben Complex Surface Water Management Plan including the recommendations from the IWQS was submitted to the DPE on <b>28 August 2023</b> .
14	The approval holder must comply with condition 33A of the NSW Consolidated Project Approvals to prepare and implement a Brine Management Plan.	Compliant	A revised Moolarben Complex Brine Management Plan incorporating EPBC 2017/7974 was approved by DPIE on <b>21 October 2020</b> . The Brine Management Plan continues to be implemented.
15	The approval holder must notify the Department in writing of the date of commencement of works in OC3, within ten business days after the date of commencement of works in OC3.	Compliant	Notification was provided to the Department on <b>18 February 2020</b> informing on the commencement of works in OC3.
16	The approval holder must notify the Department in writing of the date of commencement of operation of the water treatment facility, within ten business days after the date of commencement of operation of the water treatment facility.	Compliant	The commencement of operation of the water treatment facility occurred on <b>18 May 2020</b> . Written notification of commencement of the water treatment facility was provided to the Department on <b>27 May 2020</b> .
17	The approval holder must maintain accurate and complete compliance records.	Compliant	Noted.
18	If the Department makes a request in writing, the approval holder must provide electronic copies of compliance records to the Department within the timeframe specified in the request.	Compliant	Noted.  On 15 May 2025 the DCCEEW commenced a compliance audit to determine if Moolarben Coal Operations (MCO) were complying with the conditions of the EPBC 2017/7974 approval. Electronic copies of compliance records were requested by DCCEEW and were provided by MCO within the timeframe requested.
19	The approval holder must:	Compliant	Noted.

Condition Number	Condition	Compliance <sup>1</sup>	Evidence/Comments
	<ul style="list-style-type: none"> <li>a. Submit the Biodiversity Management Plan electronically to the Department for approval by the Minister.</li> <li>b. Publish each plan on its website within 20 business days of the date the plan is approved by the Minister and/or Secretary.</li> <li>c. Exclude or redact sensitive ecological data from plans published on its website or provided to a member of the public.</li> </ul>		The DAWE advised MCO on <b>14 August 2020</b> that there is no requirement for the Biodiversity Management Plan to be approved under the EPBC Act.
20	<p>The approval holder must use one or a combination of the following methods to retire the credits required for protected matters:</p> <ul style="list-style-type: none"> <li>a. Retire like-for-like biodiversity credits within the meaning of the Biodiversity Conservation Act 2016 (NSW).</li> <li>b. Make payments into an offsets fund that has been developed by the NSW Government and that has been endorsed by the Minister. The financial contribution or payments into an offset fund must be determined by converting biodiversity credits to an equivalent dollar value through the NSW offsets payment calculator. The approval holder must submit evidence to the Minister of any payments, within ten business days of the payment being made.</li> <li>c. Fund a biodiversity conservation action within the meaning of the Biodiversity Conservation Act 2016 (NSW). The financial contribution to biodiversity conservation actions must be determined by converting biodiversity credits to an equivalent dollar value through the NSW offsets payment calculator. The approval holder must submit to the Minister evidence of any payments within ten business days of the payment being made.</li> </ul>	Compliant	<p>Noted.</p> <p>Credits associated with Condition 34A were retired on 20 February 2026.</p> <p>Credit retirement transaction numbers: CT-18575, CT-18580, CT-18584, CT-18586, CT-18592, CT-18595.</p>
21	<p>The approval holder must prepare a compliance report each year. The timing for preparing the compliance report must be consistent with the requirements of Condition 4 of Schedule 5 of the NSW Consolidated Project Approvals, or otherwise in accordance with an annual date that has been agreed in writing by the Department. The approval holder must:</p> <ul style="list-style-type: none"> <li>a. Publish each compliance report on its website within one month of being approved by the Secretary.</li> <li>b. Notify the Department by email that a compliance report has been published on its website within five business days of the date of publication.</li> <li>c. Exclude or redact sensitive ecological data from compliance reports published on its website.</li> <li>d. Where any sensitive ecological data has been excluded from the version published, submit the full compliance report to the Department within five business days of publication.</li> </ul>	Compliant	This report.
22	The approval holder must notify the Department in writing of any non-compliance with the conditions or non-compliance with the commitments made in plans that relate to protected matters. The notification must be given no later than two business days after becoming aware of the non-	Compliant	Noted.

Condition Number	Condition	Compliance <sup>1</sup>	Evidence/Comments
	<p>compliance. The notification must specify:</p> <ul style="list-style-type: none"> <li>a. The condition which is or may be in breach.</li> <li>b. A short description of the non-compliance.</li> </ul>		
23	<p>The approval holder must provide to the Department the details of any non-compliance with the conditions or commitments made in plans that relate to protected matters no later than ten business days after becoming aware of the non-compliance, specifying:</p> <ul style="list-style-type: none"> <li>a. Any corrective action or investigation which the approval holder has already taken or intends to take in the immediate future.</li> <li>b. The potential impacts of the non-compliance.</li> <li>c. The method and timing of any remedial action that will be undertaken by the approval holder.</li> </ul>	Compliant	Noted.
24	The approval holder must ensure that independent audits of compliance with the conditions are conducted as requested in writing by the Minister.	Not Applicable	Noted.
25	<p>For each independent audit, the approval holder must:</p> <ul style="list-style-type: none"> <li>a. Provide the name and qualifications of the independent auditor and the draft audit criteria to the Department.</li> <li>b. Only commence the independent audit once the audit criteria have been approved in writing by the Department.</li> <li>c. Submit an audit report to the Department within the timeframe specified in the approved audit criteria.</li> </ul>	Not Applicable	Noted.
26	The approval holder must publish the audit report on its website within ten business days of receiving the Department's approval of the audit report and keep the audit report published on its website until the end date of this approval.	Not Applicable	Noted.
27	The approval holder may, at any time, apply to the Minister for a variation to the Biodiversity Management Plan approved by the Minister under condition 10, or as subsequently revised in accordance with these conditions, by submitting an application in accordance with the requirements of section 143A of the EPBC Act.	Not Applicable	Noted.
28	The approval holder may revise the Biodiversity Management Plan approved by the Minister under condition 10, or as subsequently revised in accordance with these conditions, without submitting it for approval under section 143A of the EPBC Act, if the taking of the action in accordance with the revised Biodiversity Management Plan would not be likely to have a new or increased impact.	Not Applicable	Noted.
29	If the approval holder revises the Biodiversity Management Plan without submitting it for approval, the	Not Applicable	Noted.

Condition Number	Condition	Compliance <sup>1</sup>	Evidence/Comments
	<p>approval holder must:</p> <ul style="list-style-type: none"> <li>a. notify the Department in writing that the approved action management plan has been revised and provide the Department with: <ul style="list-style-type: none"> <li>I. An electronic copy of the revised Biodiversity Management Plan.</li> <li>II. An explanation of the differences between the approved action management plan and the revised Biodiversity Management Plan.</li> <li>III. The reasons the approval holder considers that taking the action in accordance with the revised Biodiversity Management Plan would not be likely to have a new or increased impact.</li> <li>IV. Written notice of the date on which the approval holder will implement the revised Biodiversity Management Plan.</li> </ul> </li> </ul>		
30	<p>If the Minister gives a notice to the approval holder that the Minister is satisfied that the taking of the action in accordance with the revised Biodiversity Management Plan would be likely to have a new or increased impact, then:</p> <ul style="list-style-type: none"> <li>a. Condition 28 does not apply, or ceases to apply, in relation to the revised Biodiversity Management Plan.</li> <li>b. The approval holder must implement the Biodiversity Management Plan specified by the Minister in the notice.</li> </ul>	Not Applicable	Noted.
31	At the time of giving the notice under condition 30, the Minister may also notify that for a specified period of time, condition 28 does not apply for one or more specified action management plans.	Not Applicable	Noted.
32	The approval holder must notify the Department in writing of any proposed change to the conditions of the NSW Consolidated Project Approvals referred to in the conditions of this approval, no later than two weeks after formally proposing a change or becoming aware of a change being proposed. The approval holder must also notify the Department in writing of any change to the conditions of the NSW Consolidated Project Approvals referred to in the conditions of this approval, within two weeks of a change being finalised.	Not Applicable	Noted. There have been no proposed changes to the conditions of the NSW Consolidated Project Approvals referred to in the conditions of this approval during the reporting period.
33	Within 30 days after the completion of the action, the approval holder must notify the Department in writing and provide completion data.	Not Applicable	Noted.

<sup>1</sup> Definitions:

<u>Compliant</u>	<i>'Compliance' is achieved when all the requirements of a condition have been met, including the implementation of management plans or other measures required by those conditions.</i>
<u>Non-compliant</u>	<i>requirements of a condition or elements of a condition, including the implementation of management plans and other measures have not been met.</i>
<u>Not applicable</u>	<i>requirements of a condition or elements of a condition fall outside of the scope of the current reporting period. For example, a condition which applies to an activity that has not yet commenced.</i>

## **APPENDIX A – Moolarben Coal Annual Summaries –Biodiversity Offset Area (BOA) Flora and Fauna Monitoring**

### **Biodiversity Offset Monitoring**

Following a comprehensive review of the monitoring program by Eco Logical Australia in 2023, the program was rationalised to reduce unnecessary repetition, consolidate requirements and provide more relevant data to MCO. Subsequently changes were implemented in the monitoring program during 2025.

Flora and fauna monitoring during the reporting period included the Stage 1, Stage 1 Mod 9, and the Stage 2 BOAs. Both fauna and flora monitoring included monitoring of analogue sites located in National Parks or State Conservation Areas.

BOA monitoring included:

- Full floristic surveys.
- Rapid flora assessment.
- Fauna surveys targeting diurnal and nocturnal birds, reptiles, amphibians, mammals, microbats and habitat assessment.

Monitoring is undertaken across two management zones that have previously been mapped within the BOAs. Each of these zones have defined strategic ecological management objectives, with an overall aim to achieve a sustainable landscape with improved overall ecological quality in the long term. The management zones are:

- Management Zone 1 (MZ1/OMZ1) – Enhancement of remnant vegetation
- Management Zone 2 (MZ2/OMZ2) – Regeneration/revegetation of grassland to forest/woodland

### **Stage 1 Offset Monitoring Outcomes**

All Stage 1 BOAs achieved the representative overstorey, weed occurrence and feral animal occurrence completion criteria across MZ1 and MZ2 sites. Neither Area 1 nor Area 2 offsets have yet met the representative species regeneration completion criteria with the exception of Box Woodland in BOA Area 1. Area 2 met the representative groundcover species completion criteria in autumn however did not achieve this completion criteria in spring.

Area 3 was the only stage 1 BOA to achieve all completion criteria outlined in the Land Management Plan (LMP) meeting all criteria for representative overstorey and ground cover species presence, representative species regeneration and weed and feral animal occurrence.

### **Trends in Overall Biodiversity Values**

Overall, the Stage 1 BOAs have continued to demonstrate substantial progress towards meeting the Stage 1 completion criteria, with the majority of BOAs managed under the LMP being either fully compliant with completion criteria or showing clear trajectories towards compliance with completion criteria.

While some specific vegetation associations, such as MZ2 AAW in Area 2 and the MZ2 SIF and AAW in Area 1, appear to have limited improvement or declines, this is not reflective of the overall vegetation condition observed across the BOAs. While some specific vegetation associations, such as the MZ2 SIF area in Area 1, present challenges due to limited representation and analogue benchmarks, these do not significantly detract from the broader outcomes observed across the BOAs.

### **MOD 9 Offset Monitoring Outcomes – Assessment against BOMP Completion Criteria for MZ2 Areas**

The monitoring of Stage 1 MOD 9 BOAs is managed under the MOD 9 Biodiversity Offset Management Plan (BOMP). MZ1 sites were monitored in autumn 2024, therefore only MZ2 sites were monitored in 2025 in accordance with the MOD 9 BOMP. Completion criteria will have been achieved when the vegetation has either achieved the relevant Biometric Vegetation Type (BVT) benchmark condition (for at least one upper structural layer and one ground cover class) or it can be demonstrated that it is on a self-sustaining trend towards the relevant benchmark condition.

Across Bobadeen, Clarke, Properties 24 & 25 and Property 5 all Blakely's Red Gum – Yellow Box grassy open forest or woodland sites achieved all completion criteria. Clarke was the only BOA to achieve all overstorey/midstorey completion criteria across all BVTs.

The ground cover completion criteria was achieved at Clarke, Properties 24 & 25 and Property 5. At least 50% of sites across the Bobadeen and Moolarmoo BOAs achieved the groundcover completion criteria. Vegetation at the Moolarmoo BOA has not yet achieved overstorey/midstorey or groundcover completion criteria.

### ***Trends in Overall Biodiversity Values***

Both Bobadeen and Moolarmoo MZ2 sites recorded lower values against the overstorey/midstorey criterion when compared to 2024, results recorded in 2025 align more closely to previous monitoring, suggesting an overestimate in 2024 NOC and NMC percentages. It has been reported by Epic Environmental that the 2025 results are not indicative of a decline in site condition.

Overall, most MOD 9 MZ2 sites meet at least one of the groundcover benchmark ranges and therefore are achieving the groundcover completion criterion. With the exception of Clarke there is a limited presence of established midstorey and overstorey structural layers at many MZ2 sites impacting the achievement of overstorey/midstorey completion criteria.

Natural regeneration of midstorey and overstorey species are present across some MZ2 sites, assisted regeneration is already underway at multiple MOD 9 offsets and set to continue into the future therefore key cover metrics across MZ2 sites are expected to continue to improve.

### **Stage 2 Offset Monitoring Outcomes – Assessment against Stage 2 BOMP Performance Indicators and Completion Criteria**

The monitoring of Stage 2 offsets is managed under the Stage 2 BOMP and associated Cluster management plans (CMPs). OMZ1 sites were monitored in autumn 2024, therefore only OMZ2 sites were monitored in 2025 in accordance with the Stage 2 BOMP.

The following summarises the performance of Stage 2 BOAs against the outcomes described in the Stage 2 BOMP:

- For Offset Outcome 1(a) (woodland/forest and Derived Native Grassland [DNG]) areas:
  - At all sites where overstorey species were recorded, the number of species was consistent or greater than previously recorded and demonstrates that overstorey species are healthy and developing.
  - Libertus and Onsite Offset BOAs are achieving the performance indicator for natural and/or assisted regeneration in DNG areas.
  - Across Dun Dun East, Dun Dun West and Onsite offsets at least one of three completion criteria are being met
  - With on-going management, all BOAs are expected to achieve completion criteria by 2065
- For Offset Outcome 1(b) (Box Gum Woodland EEC – Woodland and DNG) areas:
  - All sites within Outcome 1(b) are considered to be achieving all performance indicators in 2025
  - All Outcome 1(b) areas of Dun Dun East are achieving at least two of four completion criteria with three sites achieving three of four completion criteria
  - With on-going management, all BOAs are expected to achieve completion criteria by 2065
- For Offset Outcome 2(c) (Existing Grassland to forest/woodland) areas:
  - At all sites where overstorey species were recorded, the number of species was consistent with or greater than that recorded in the previous monitoring event
  - Two of three sites across Old Bobadeen BOA and Onsite BOAs are currently achieving at least one of four completion criteria.

### **Actions for Next Reporting Period**

During the next period activities to be undertaken include review and consolidation of biodiversity offset management plans, continued monitoring, assisted regeneration planning and implementation, fencing repair/installation, track and fire trail works, continued weed and feral animal control works.

There are three existing flora and three fauna monitoring sites that are expected to be impacted by the Energy Co works planned to commence in 2026. Consequently, flora sites 14a (Area 1), 2c (Area 1), FI31 (Property 24/25) and fauna sites Fa14a (Area 1), Fa2b (Area 1) and Mod9\_Fa31 (Property 24/25) will need to be re-established during the 2026 autumn monitoring campaign. These sites were planned to be re-established during 2025 in their respective BOA however due to delays on Energy Co works they will be re-established as part of the 2026 monitoring program.

## **APPENDIX B – Moolarben Coal Annual Summaries – Rehabilitation Monitoring (specifically Domain D – Rehabilitation Biodiversity Offset Area)**

MCO undertakes a comprehensive monitoring program of rehabilitation areas in accordance with the RMP. The program includes monitoring for initial establishment, long term floristic composition, structure and ecological functioning, habitat and koala feed tree presence, fauna, and a comprehensive rehabilitation walkover. Monitoring is conducted in spring, and results are assessed against preliminary rehabilitation completion criteria.

The rehabilitation monitoring program incorporates Domain D – Rehabilitation Biodiversity Offset Area which are areas within OC2/OC3 to be rehabilitated to establish specific Plant Community Type (PCT) vegetation communities. This will generate the residual NSW BioBanking Scheme Framework for Biodiversity Assessment (FBA) ecosystem credits for Biometric Vegetation Types (BVT) HU730 (equivalent to Plant Community Type (PCT) 618) and HU910 (PCT 1696), and species credits for *Phascolarctos cinereus* (koala). Due to the relevance to the EPBC approvals, only Domain D results are covered in this summary. A full summary of the Moolarben 2025 rehabilitation monitoring program is provided in the Annual Review.

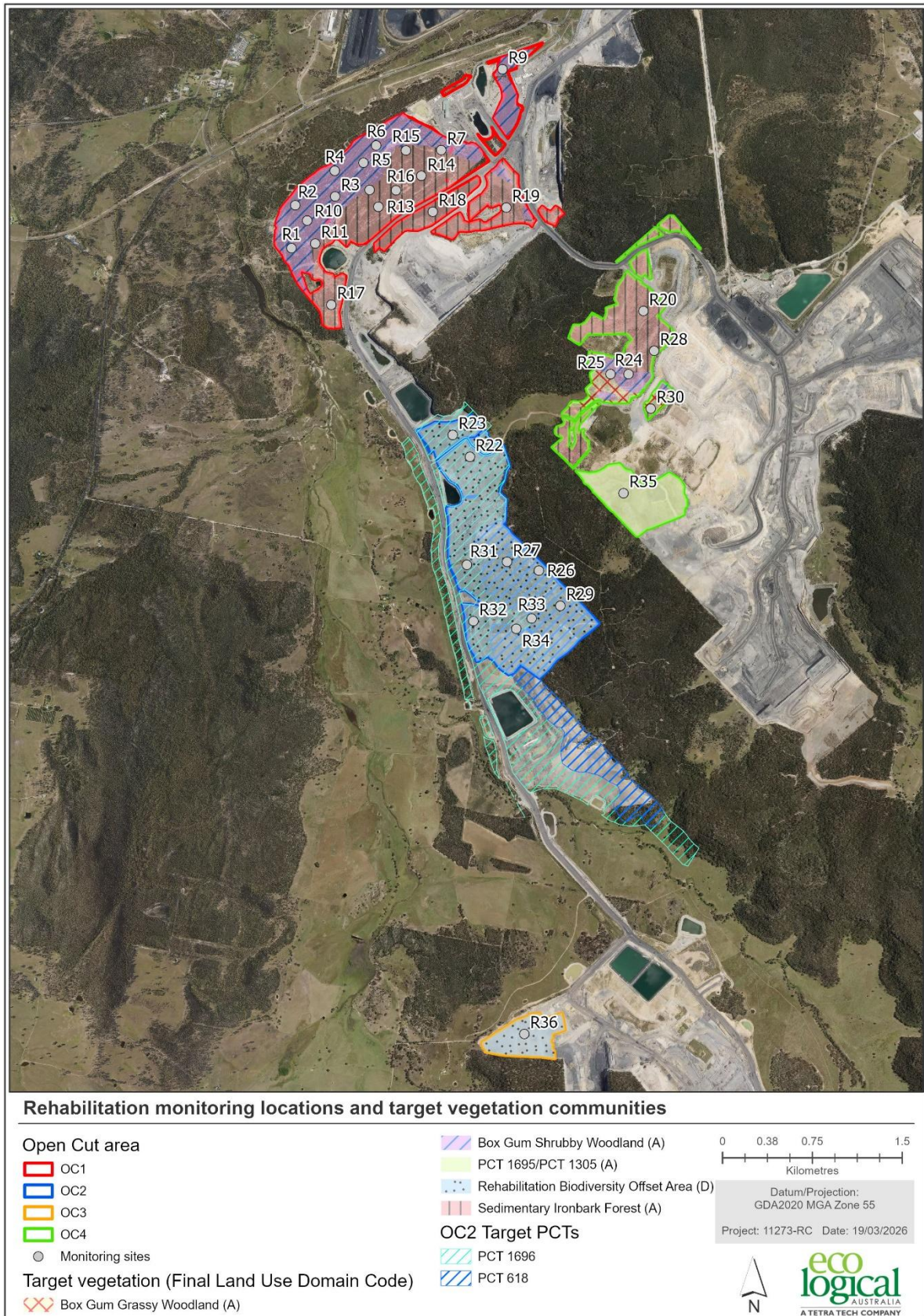
### **Initial Establishment and Long-term Monitoring**

Initial Establishment Monitoring (IEM) is a rapid style assessment of young ( $\leq 3$  years old) rehabilitated areas, principally to determine germination success, landform stability and early threats to the rehabilitation. The more detailed Long Term Monitoring (LTM) is applied in older rehabilitation areas ( $\geq 4$  years old) to evaluate progress of the rehabilitation towards fulfilling agreed or proposed completion criteria, and ultimately the targeted post-mining land use.

### **Rehabilitation Monitoring Sites**

Progressive rehabilitation of disturbed areas is undertaken as land becomes available on a campaign basis. The rehabilitated landform therefore consists of a mosaic of areas that have been rehabilitated at different times. Monitoring sites have been selected to incorporate as many rehabilitation campaign areas as possible to provide a representative sample of conditions across each rehabilitated landform. Data is collected at individual sites and interpreted to assess the condition of each rehabilitation campaign, final land use domain or open cut area. The rehabilitation objectives and completion criteria in the RMP apply to the whole of landform scale.

There are currently 34 rehabilitation sites monitored across OC1, OC2, OC3 and OC4. For the spring 2025 campaign, only sites R35 and R36 were monitored using IEM methodology. All other sites meet the required age for LTM, however due to the biannual monitoring schedule for LTM sites only sites R29, R30, R33 and R34 were monitored during 2025. Rehabilitation monitoring sites are shown in Figure B-1.



**Figure B-1: Location of rehabilitation monitoring plots**

## Analogue Sites

Analogue sites representative of the target Domain A vegetation communities have been established in the nearby Durrigere State Conservation Area and Goulburn River National Park for the OC1 and OC4 rehabilitated landforms. The representative target vegetation communities for these analogue sites are stated in the current RMP.

The rehabilitation outcomes for Domain D (OC2) rehabilitation do not require reference to analogues as they rely on published benchmark conditions (via BioNET [Vegetation Condition Benchmarks V1.2 | Dataset | SEED](#)) for the target BVTs/PCTs (OEH 2017).

For sites which undergo LTM, an assessment against the Completion Criteria is undertaken, including a comparison to analogue vegetation attributes where applicable. The Ecosystem Function Completion Criteria applicable to Domain D requires assessment against analogue 10<sup>th</sup> and 90<sup>th</sup> percentile ranges for litter cover. As listed in the RMP, there are two target PCTs within the OC2 section of Domain D:

- PCT 618: White Box x Grey Box - red gum - Rough-barked Apple grassy woodland on rich soils on hills in the upper Hunter Valley
- PCT 1696: Blakely's Red Gum - Rough-barked Apple shrubby woodland of central and upper Hunter

The Completion Criteria relating to litter cover has been assessed using the analogue 10<sup>th</sup> and 90<sup>th</sup> percentile ranges for Box Gum Grassy Woodland analogue sites (A1a, A1b, A1c, A2a, A2b).

## Results of Floristic Monitoring – Domain D

### Vegetation Composition

Native plant species richness at R29 was  $\geq 20.5$  during 2025 (Figure B2). A slight decrease in native species richness has occurred since monitoring began in 2022; however, this is likely due to climatic factors rather than decreasing condition of the rehabilitation.

Native plant species richness at R33 has remained below the target since monitoring began in 2023 and has seen a slight decrease in native species richness across the years.

Native plant species richness at R34 has increased since 2024, however, remains below the target.

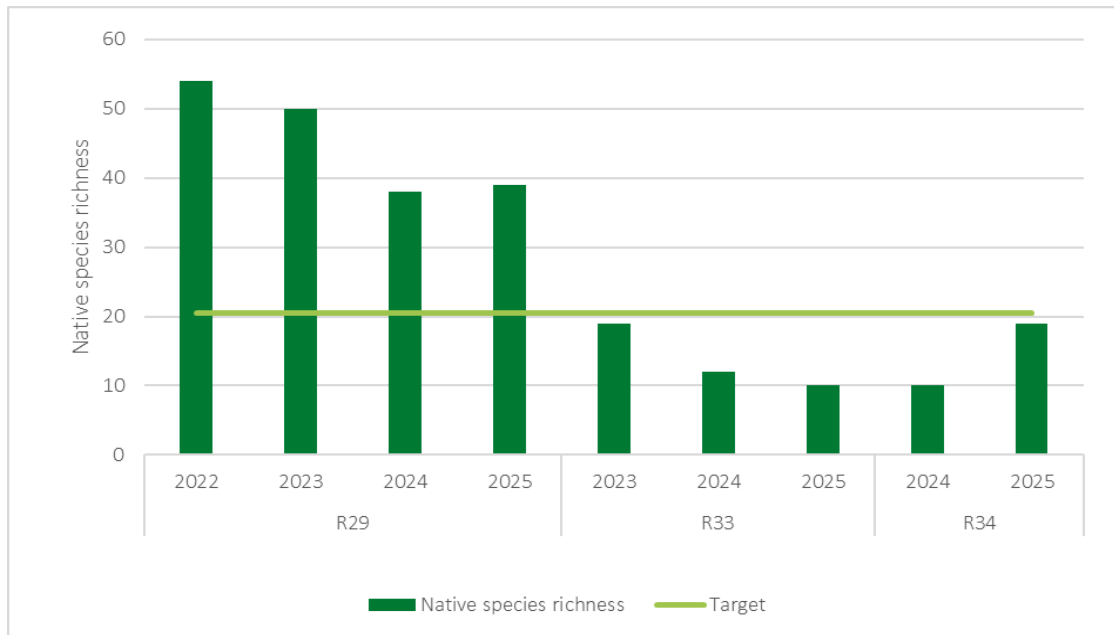


Figure B2: Domain D native species richness

Consistent with previous monitoring, tree species are absent from R29 (Table). Therefore, there are no regionally relevant koala feed trees present within the monitoring site. However, *Eucalyptus punctata* (Grey Gum) was recorded upslope of the monitoring site during 2025 in the same rehabilitation campaign. This species is a koala feed tree species.

Site R33 and R34 contain 50% and 80% proportion of koala use trees, respectively (Table).

Table B1: Proportion of Koala use trees present within Domain D monitoring sites

Site	Tree species present	Trees >10 cm DBH	Proportion of koala use trees
R29	None	No	0%
R33	<i>Acacia linearifolia</i> (Narrow-leaved Wattle), <b><i>Eucalyptus blakelyi</i></b> (Blakely's Red Gum)	No	50%
R34	<i>Acacia linearifolia</i> , <b><i>Eucalyptus blakelyi</i></b> , <b><i>Eucalyptus bridgesiana</i></b> (Apple Box), <b><i>Eucalyptus melliodora</i></b> (Yellow Box), <b><i>Eucalyptus crebra</i></b> (Narrow-leaved Ironbark)	No	80%

**Bold** text indicates species is listed as a koala use tree in Schedule 2 of SEPP (Koala Habitat Protection) 2019.

### Vegetation Structure

Consistent with previous years, native overstorey cover is absent from R29. However, as noted above, native overstorey species are present at low densities within the rehabilitation campaign. Infill planting may be required to increase overstorey cover.

Native overstorey cover has increased at R33 and R34 compared to previous years, however, remains below the target at both sites (Figure B3).

Native midstorey cover at R29 was slightly lower than the target range during 2025, whilst R33 and R34 recorded midstorey cover within the target range (Figure B4).

Consistent with previous monitoring years, native groundcover – grass at R29, R33 and R34 were within the target range during 2025 (Figure B5).

Native groundcover – shrubs was within the target range for R29, however, native groundcover – shrubs remained absent from R33 and R34 in 2025 (Figure ).

Native groundcover – other was slightly lower than the target range at R29, R33 and R34 during 2025 (Figure B7). This attribute was within the target range in previous monitoring years at all sites, with the decrease in 2025 likely attributable to drier climatic conditions experienced in 2025 compared to previous years.

The length of fallen logs within R29 was 3 m, R33 was 35 m and R34 was 5 m, which is consistent with previous years and meets the minimum requirement of 1.25 m.

Consistent with previous years, exotic plant cover remained within the target range at all sites (Figure B8).

The SVS for all sites, and the average SVS for Domain D was above the minimum target in 2025 (Figure B9).

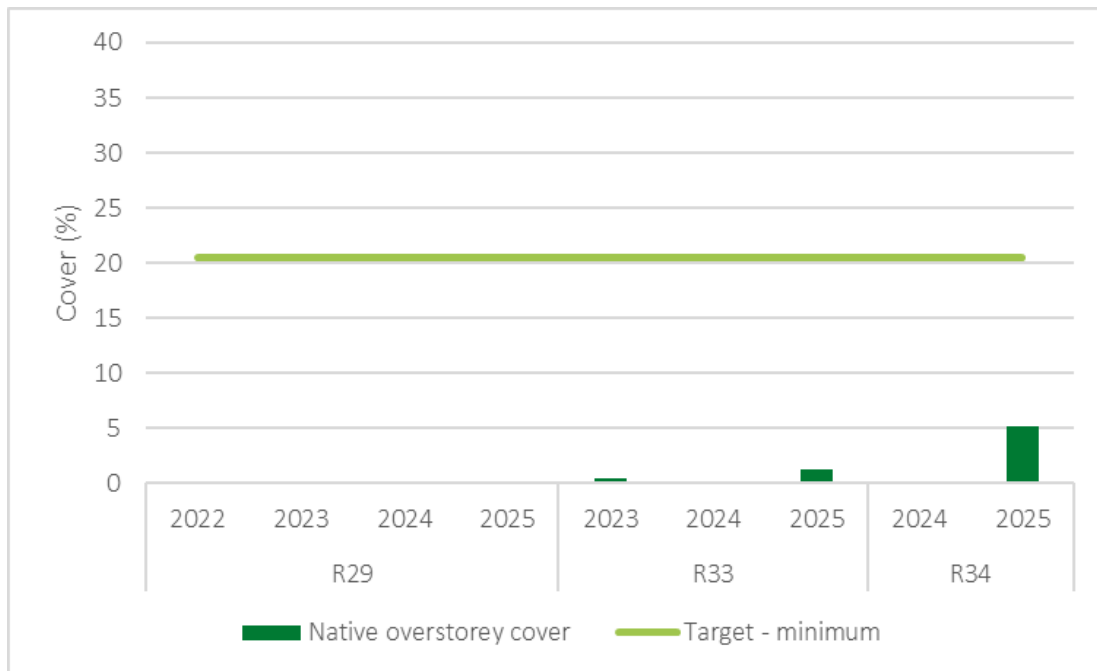


Figure B3: Domain D native overstorey cover compared to target

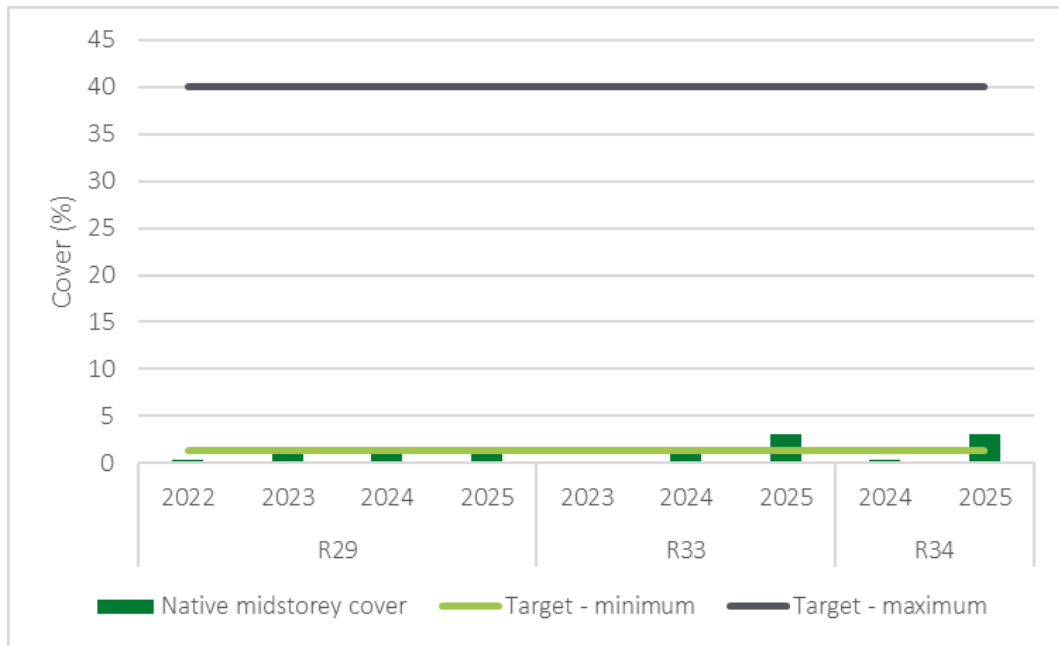


Figure B4: Domain D native midstorey cover compared to target range

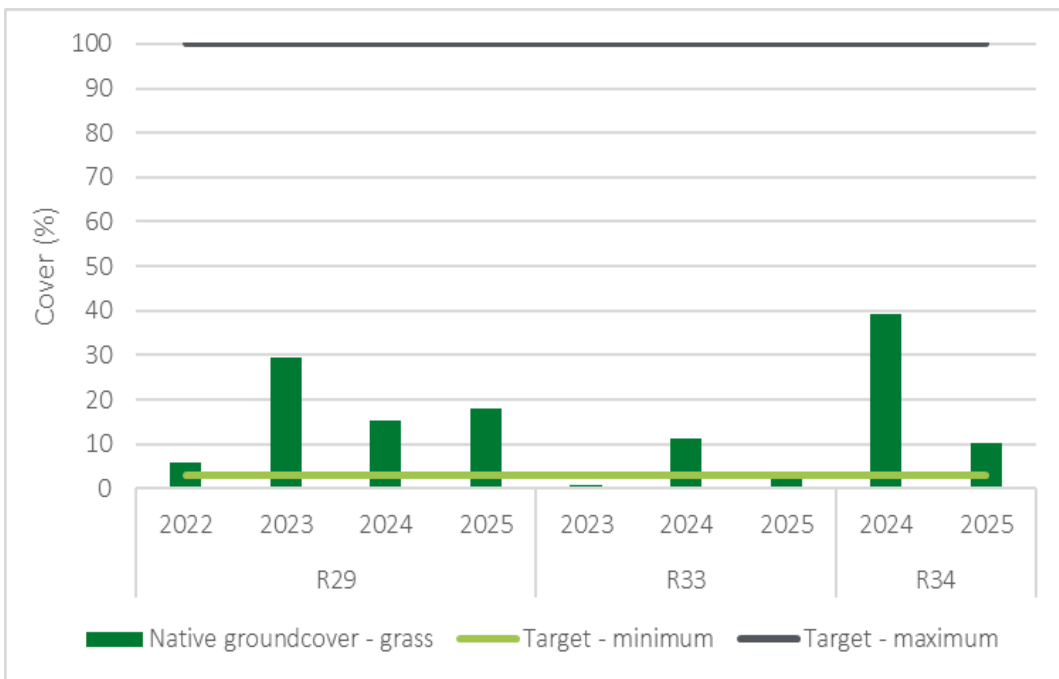
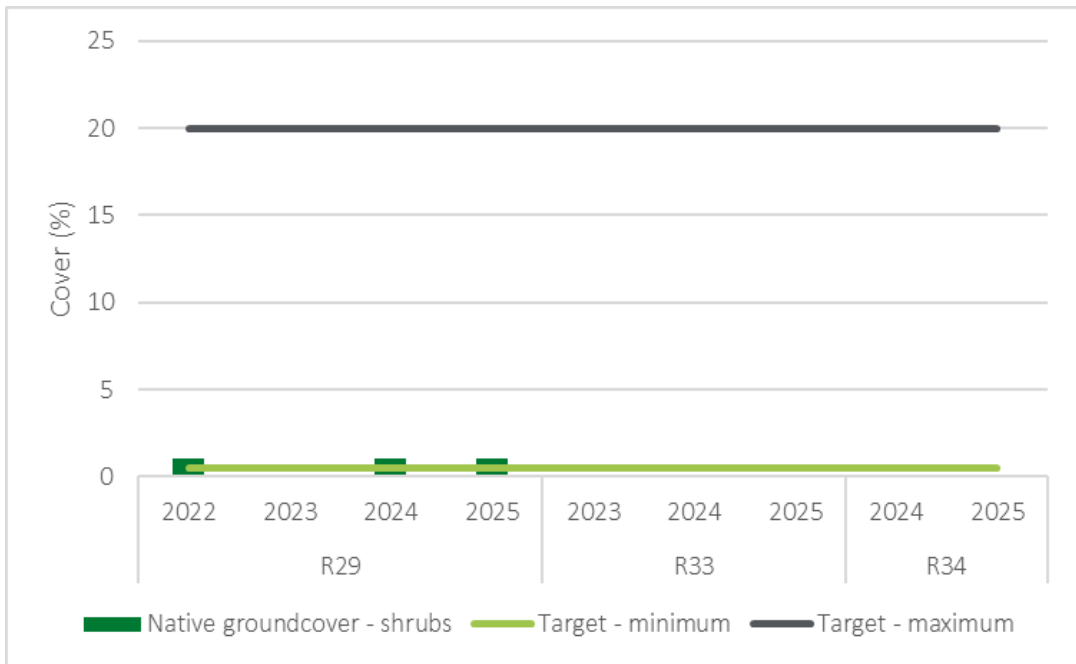
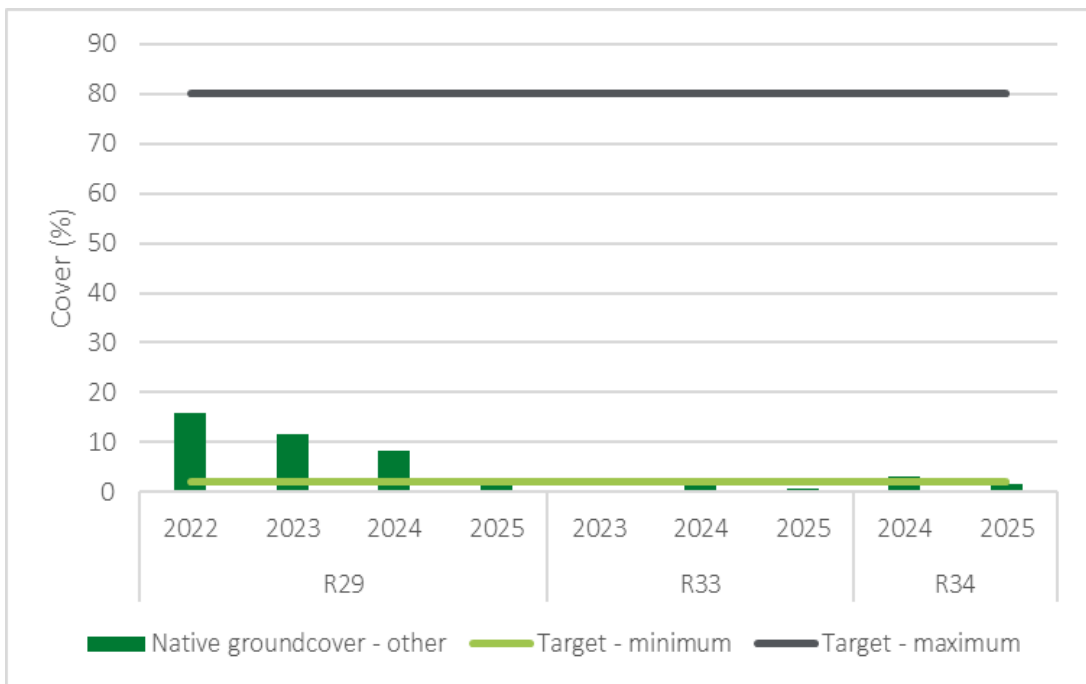


Figure B5: Domain D native groundcover – grass cover compared to target range



**Figure B6: Domain D native groundcover – shrubs compared to target range**



**Figure B7: Domain D native groundcover – other compared to target range**

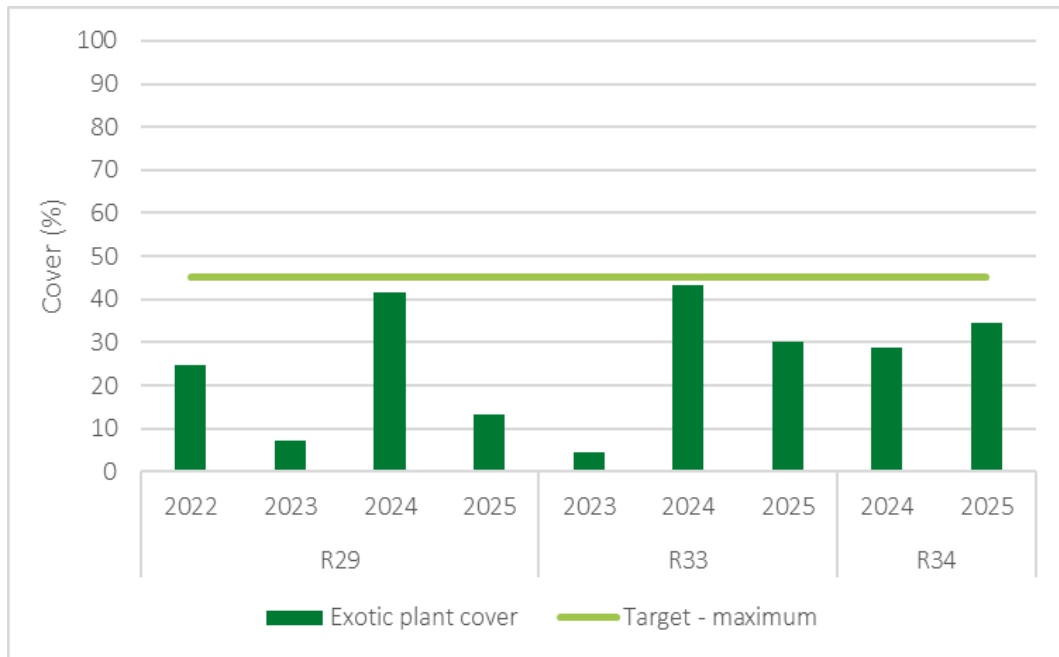


Figure B8: Domain D exotic plant cover compared to target range

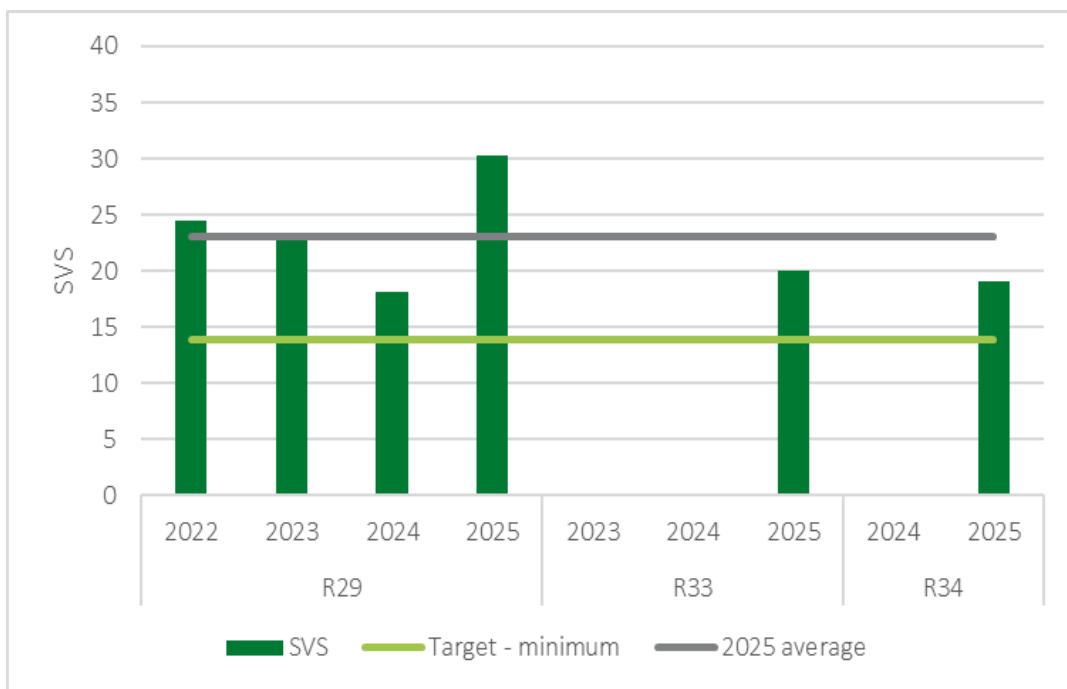


Figure B9: Domain D SVS compared to target range

### Ecosystem Function

Litter cover at R29 and R33 during 2025 was equal to the 10<sup>th</sup> percentile of litter cover recorded at analogue sites, and litter cover at R34 was within the 10<sup>th</sup>-90<sup>th</sup> percentile range (Figure ).

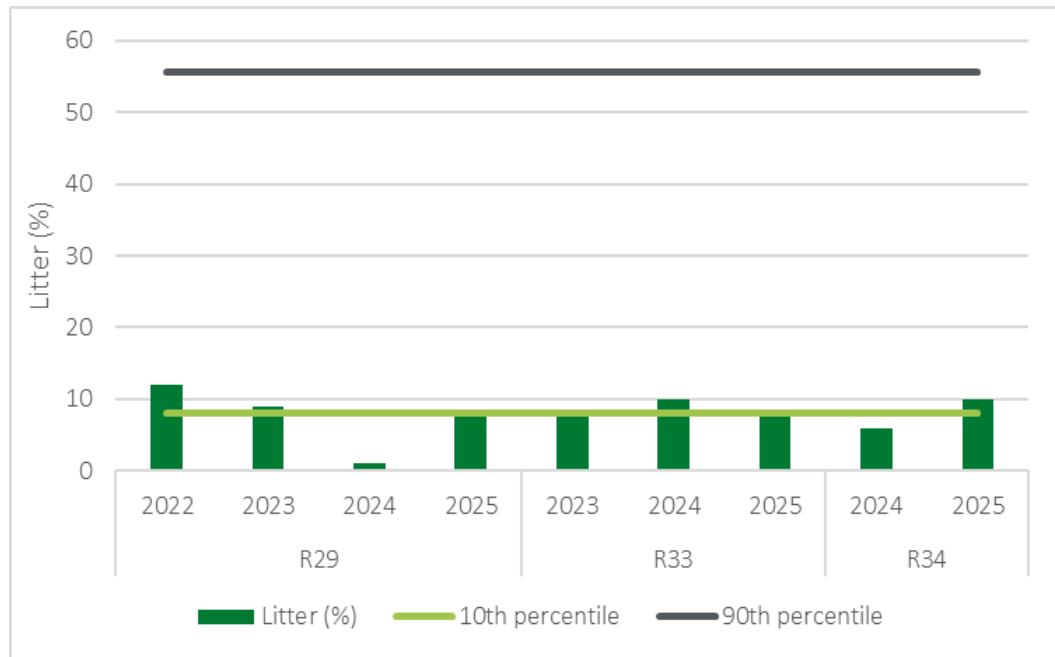


Figure B10: Domain D 2025 litter cover compared to 10<sup>th</sup>-90<sup>th</sup> percentile range recorded at analogue sites

### High Threat Exotic Cover

Five species of HTE were recorded within monitoring sites in Domain D, including:

- *Rumex acetosella* (Sheep Sorrel)
- *Senecio madagascariensis* (Fireweed)
- *Carthamnus lanatus* (Saffron Thistle)

Within monitoring sites, HTE cover was generally low to absent ranging from 0% at R33 and R36, to 0.6% at R29. HTE cover has remained stable at R33 and R34, and at R29 has decreased from 5.1% recorded in 2024 (5.1%), likely due to climatic factors.

### Domain D – Fauna Monitoring

No fauna monitoring was undertaken with Domain D during 2025; however *Corvus coronoides* (Australian Raven) and *Anthus novaeseelandiae* (Australasian Pipit) were opportunistically recorded.

### Summary Assessment of Domain D Rehabilitation Performance Indicators

An assessment against the Completion Criteria was undertaken for sites which underwent LTM during 2025. The assessment against the Completion Criteria for Domain D is presented in Table B2.

In summary:

Domain D PCT 1696 is currently achieving five out of 11 relevant completion criteria:

- Native ground cover – grass, length of fallen logs, exotic cover, overall SVS and litter cover are within the target range.

Native plant species richness, proportion of koala feed trees, overstorey cover, midstorey cover, native ground cover – shrub and native ground cover – other metrics are not meeting the target range.

Table B2: Domain D Completion Criteria assessment summary

Rehabilitation objective	Proposed Completion Criteria	R29	R33	R34
The vegetation composition of the rehabilitation contains species that are commensurate with native vegetation communities of PCT 618 found in the local area.	Native plant species richness is $\geq$ 20.5 at year 10 post mining.	<b>Currently achieving</b> Native species richness at R29 was 39 species.	<b>Ongoing</b> Native species richness at R33 was 10 species.	<b>Ongoing</b> Native species richness at R34 was 19 species.
	$\geq$ 15% of the total number of trees are the regionally relevant species within koala FBA credit areas.	<b>Ongoing</b> There are no regionally relevant koala feed trees present within the monitoring site.	<b>Currently achieving</b> 50% of the total number of tree species are koala use trees	<b>Currently achieving</b> 80% of the total number of tree species are koala use trees
The vegetation structure of the rehabilitation is similar to that of native vegetation communities of the PCT 618 found in the local area.	Native overstorey cover is between 3.75 and 80% at year 10 post mining operations.	<b>Ongoing</b> Consistent with previous years, native overstorey cover is absent from R29.	<b>Ongoing</b> Overstorey cover at R33 was 1% in 2025	<b>Ongoing</b> Overstorey cover at R34 was 5% in 2025
	Native mid storey cover is between 1.25 and 40% at year 10 post mining operations.	<b>Ongoing</b> Native midstorey cover was slightly lower than the target range during 2025 (1%).	<b>Currently achieving</b> Native midstorey cover in 2025 was within the target range (3%)	<b>Currently achieving</b> Native midstorey cover in 2025 was within the target range (3%)
	Native ground cover, grass is between 3 and 100% at year 10 post mining operations.	<b>Currently achieving</b> Native groundcover – grass was within the target range during 2025.	<b>Currently achieving</b> Native groundcover – grass was within the target range during 2025.	<b>Currently achieving</b> Native groundcover – grass was within the target range during 2025.
	Native ground cover, shrubs is between 0.5 and 20% at year 10 post mining operations.	<b>Currently achieving</b> Native groundcover – shrubs was within the target range during 2025.	<b>Ongoing</b> Native groundcover – shrubs remain absent from R33	<b>Ongoing</b> Native groundcover – shrubs remain absent from R34
	Native ground cover, other is between 2 and 80% at year 10 post mining operations.	<b>Ongoing</b> Native groundcover – other was slightly lower than the target	<b>Ongoing</b> Native groundcover – other was slightly lower than the target	<b>Ongoing</b> Native groundcover – other was slightly lower than the target

Rehabilitation objective	Proposed Completion Criteria	R29	R33	R34
		range during 2025 (1.6%).	range during 2025 (0.7%).	range during 2025 (1.6%)
	Total length of fallen logs (m) is 1.25 at year 10 post mining operations.	<b>Currently achieving</b> The length of fallen logs within R29 was 3 m	<b>Currently achieving</b> The length of fallen logs within R33 was 35 m	<b>Currently achieving</b> The length of fallen logs within R34 was 5 m
	Exotic plant cover is <45% at year 10 post mining operations.	<b>Currently achieving</b> Exotic plant cover was <45%.	<b>Currently achieving</b> Exotic plant cover was <45%.	<b>Currently achieving</b> Exotic plant cover was <45%.
	Overall Site Value Score (OEH,2015) (average of plots in vegetation zone) is ≥13.8 at 10 years post mining operations.	<b>Currently achieving</b> The overall SVS during 2025 was 23	<b>Currently achieving</b> The overall SVS during 2025 was 23	<b>Currently achieving</b> The overall SVS during 2025 was 23
Levels of ecosystem function have been established that demonstrate the rehabilitation of PCT 618 is self-sustainable.	Litter cover is within 10th-90th percentile variation range of reference sites/data	<b>Currently achieving</b> Litter cover at R29 in 2025 was equal to the 10 <sup>th</sup> percentile litter cover recorded at Box Gum Grassy Woodland analogue sites.	<b>Currently achieving</b> Litter cover at R33 in 2025 was equal to the 10 <sup>th</sup> percentile litter cover recorded at Box Gum Grassy Woodland analogue sites.	<b>Currently achieving</b> Litter cover at R34 in 2025 was above to the 10 <sup>th</sup> percentile litter cover recorded at Box Gum Grassy Woodland analogue sites.

## APPENDIX C – Summary of Weed Management Activities

Table C1 below summarises the weed management activities that were undertaken across offset areas during 2025.

**Table C1: Weed management works conducted during 2025**

Month	Contractor	Offset Area	Target Weeds
January	Heavy Duty Contracting	Bobadeen	Bathurst burr ( <i>Xanthium spinosum</i> ) Blue heliotrope ( <i>Heliotropium amplexicaule</i> ) Cineraria ( <i>Cineraria lyratiformis</i> ) St. John's wort ( <i>Hypericum perforatum</i> )
February	Eco-Regen Australia Heavy Duty Contracting Toolijooa Environmental Restoration	Bobadeen Moolarmoo Ulan 18	Bathurst burr ( <i>Xanthium spinosum</i> ) Blue heliotrope ( <i>Heliotropium amplexicaule</i> ) Caltrop ( <i>Tribulus terrestris</i> ) Cineraria ( <i>Cineraria lyratiformis</i> ) Common pear ( <i>Opuntia stricta</i> ) Great Mullein ( <i>Verbascum thapsus</i> ) Purpletop ( <i>Verbena bonariensis</i> ) St. John's wort ( <i>Hypericum perforatum</i> ) Tree-of-heaven ( <i>Ailanthus altissima</i> )
March	Eco-Regen Australia Toolijooa Environmental Restoration J & A Rural Contracting	Bobadeen Dun Dun West (Nori) Dun Dun East	Bathurst burr ( <i>Xanthium spinosum</i> ) Blue heliotrope ( <i>Heliotropium amplexicaule</i> ) Cineraria ( <i>Cineraria lyratiformis</i> ) Fleabane ( <i>Conyza sp.</i> ) St. John's wort ( <i>Hypericum perforatum</i> ) Blackberry ( <i>Rubus fruticosus</i> ) Serrated Tussock ( <i>Nassella trichotoma</i> )
April	Eco-Regen Australia	Gilgal Moolarmoo	Bathurst burr ( <i>Xanthium spinosum</i> ) Blackberry ( <i>Rubus fruticosus</i> ) Common pear ( <i>Opuntia stricta</i> ) Horehound ( <i>Marrubium vulgare</i> ) Inkweed ( <i>Phytolacca octandra</i> ) Noogoora burr ( <i>Xanthium occidentale</i> ) Stinking Roger ( <i>Tagetes minuta</i> ) Tree-of-heaven ( <i>Ailanthus altissima</i> )
May	Eco-Regen Australia	Properties 24/25 Property 5	Great mullien ( <i>Verbascum thapsus</i> ) Willows ( <i>Salix sp.</i> )
June	Eco-Regen Australia	Elward Property 24/25 Property 5 Ulan 18	Common pear ( <i>Opuntia stricta</i> ) Great mullien ( <i>Verbascum thapsus</i> ) Paterson's curse ( <i>Echium plantagineum</i> ) Willows ( <i>Salix sp.</i> )
July	Heavy Duty Contracting	Gilgal	Olive ( <i>Olea europaea</i> )

August	North East Wiradjuri company Toolijooa Environmental Restoration	Moolarmoo Ulan 18	Great Mullein ( <i>Verbascum thapsus</i> ) Paterson's curse ( <i>Echium plantagineum</i> )
September	North East Wiradjuri Company	Moolarmoo	Paterson's curse ( <i>Echium plantagineum</i> )
October	North East Wiradjuri Company Toolijooa Environmental Restoration	Bobadeen Elward Property 5	Cineraria ( <i>Cineraria lyratiformis</i> ) Common pear ( <i>Opuntia stricta</i> ) Great mullien ( <i>Verbascum thapsus</i> ) Lantana ( <i>Lantana camara</i> ) Paterson's curse ( <i>Echium plantagineum</i> ) Scotch Thistle ( <i>Onopordum acanthium</i> ) Tobacco Bush ( <i>Solanum mauritianum</i> ) Tree-of-heaven ( <i>Ailanthus altissima</i> )
November	J & A Rural Contracting North East Wiradjuri company Toolijooa Environmental Restoration	Bobadeen Dun Dun West (Nori) Gilgal Properties 24/25	Blackberry ( <i>Rubus fruticosus</i> ) Blue heliotrope ( <i>Heliotropium amplexicaule</i> ) Cineraria ( <i>Cineraria lyratiformis</i> ) Common pear ( <i>Opuntia stricta</i> ) Great mullien ( <i>Verbascum thapsus</i> ) Horehound ( <i>Marrubium vulgare</i> ) Saffron thistle ( <i>Carthamus lanatus</i> ) Serrated tussock ( <i>Nassella trichotoma</i> ) St. John's wort ( <i>Hypericum perforatum</i> ) Tree-of-heaven ( <i>Ailanthus altissima</i> )
December	Toolijooa Environmental Restoration	Gilgal	Tree-of-heaven ( <i>Ailanthus altissima</i> )

## **APPENDIX D – Summary of Revegetation Activities**

Figures D1 to D4 show the offset areas that have undergone assisted revegetation through tubestock planting of appropriate local vegetation communities. All revegetation works have been done using seed collected from Moolarben BOAs, with plants propagated at a local specialist native plant nursery.

All assisted revegetation areas are subject to survival assessments within 18 months of planting. Planting areas that do not reach the targeted composition and density requirement are scheduled for infill planting during future revegetation campaigns. Recent planting areas that have not met target performance criteria include:

- Dun Dun BOA – impacts from wildfire. Many areas are experiencing natural regeneration post-fire however and will be reassessed for future planting requirements.
- Ulan 18 cluster – impacts from feral goats from nearby Crown Land Reserve. A comprehensive vertebrate pest control program has been implemented with the removal of approximately 328 goats during 2025. The Ulan cluster will be replanted once goat numbers are controlled.
- Old Bobadeen – A dry period after the 2024 planting and an extended dry period during 2025 has impacted survival rates. Infill planting was undertaken during 2025 into some of the 2024 areas.
- Moolarmoo – the original 2023 plantings did not survive due to herbivory, and the area was replanted in 2025.

The extent of natural regeneration being observed across many of the offsets is now considerable. Infill planting will not be required in many areas that were originally targeted for assisted revegetation. Ecological monitoring and regular inspections are informing the planting program going forward.

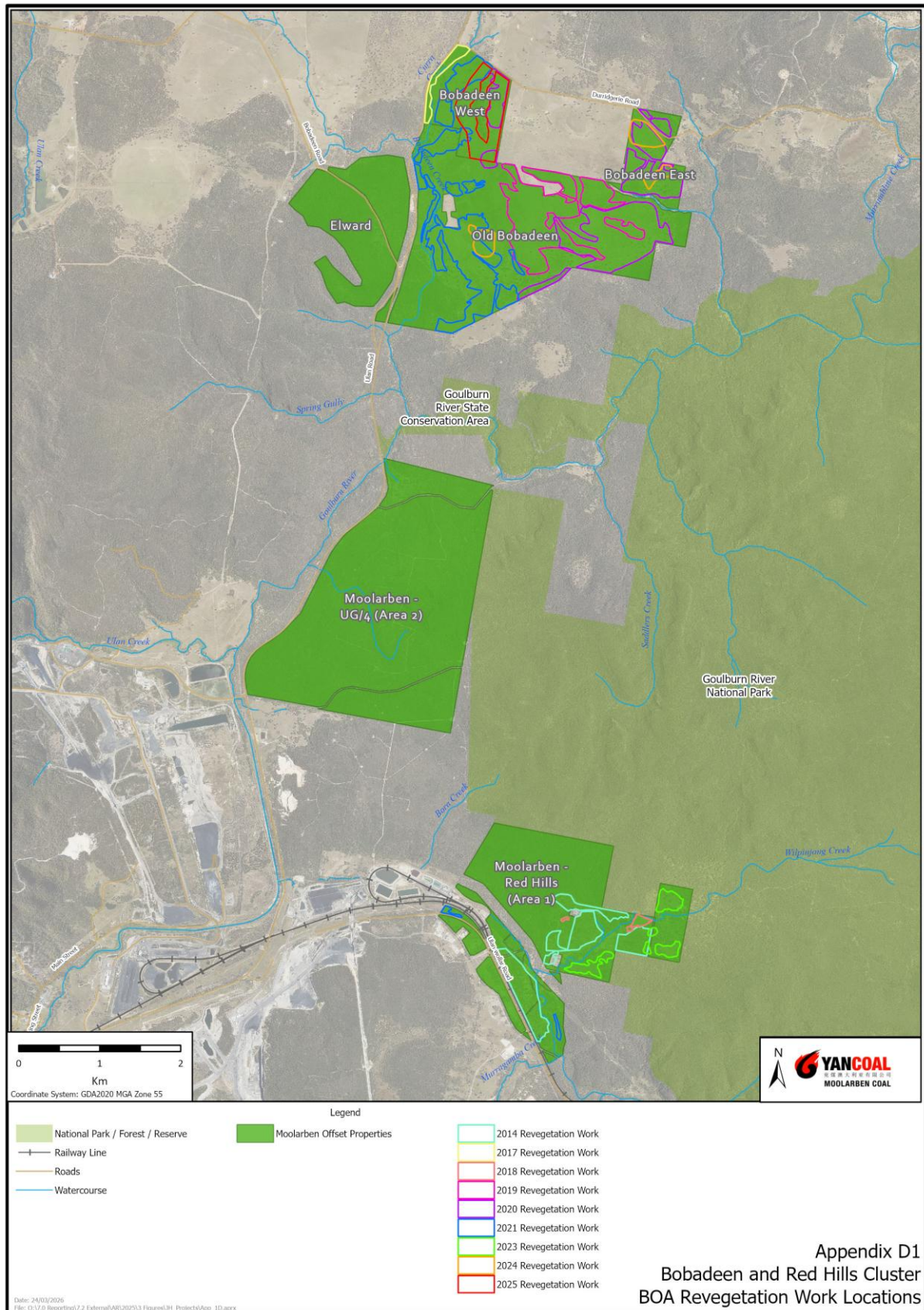


Figure D1 – Bobadeen and Red Hills (Area 1) cluster assisted revegetation areas



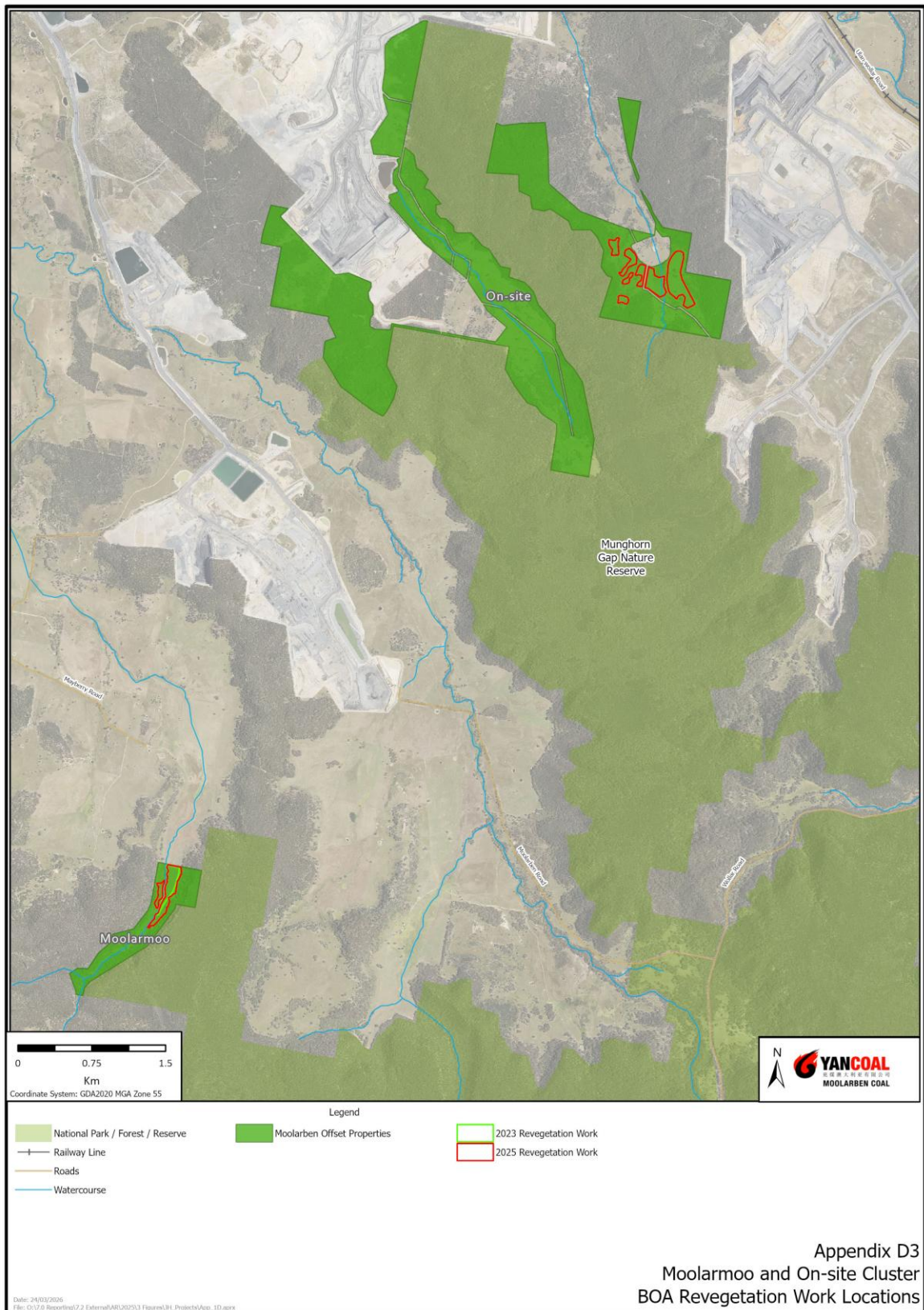
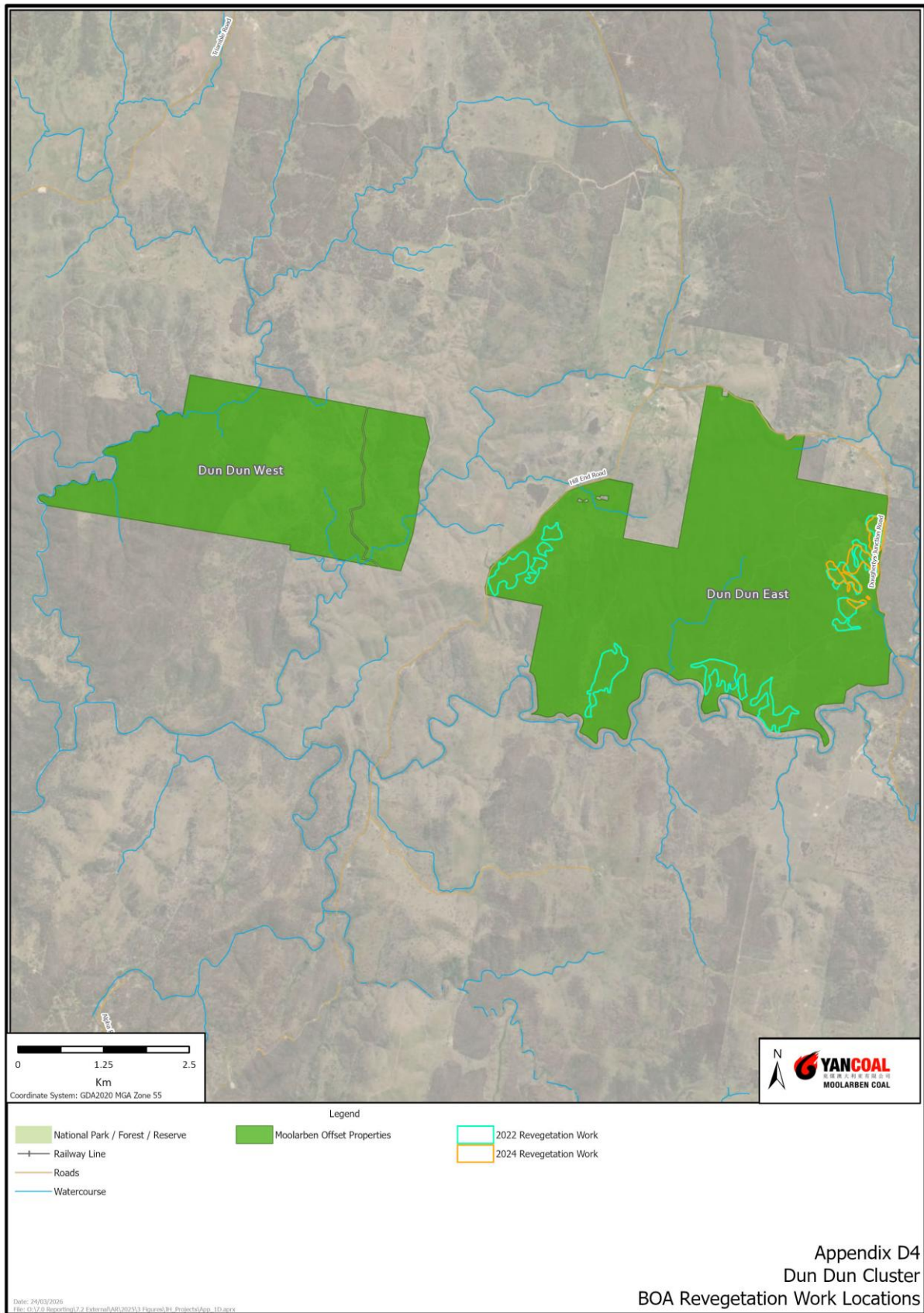
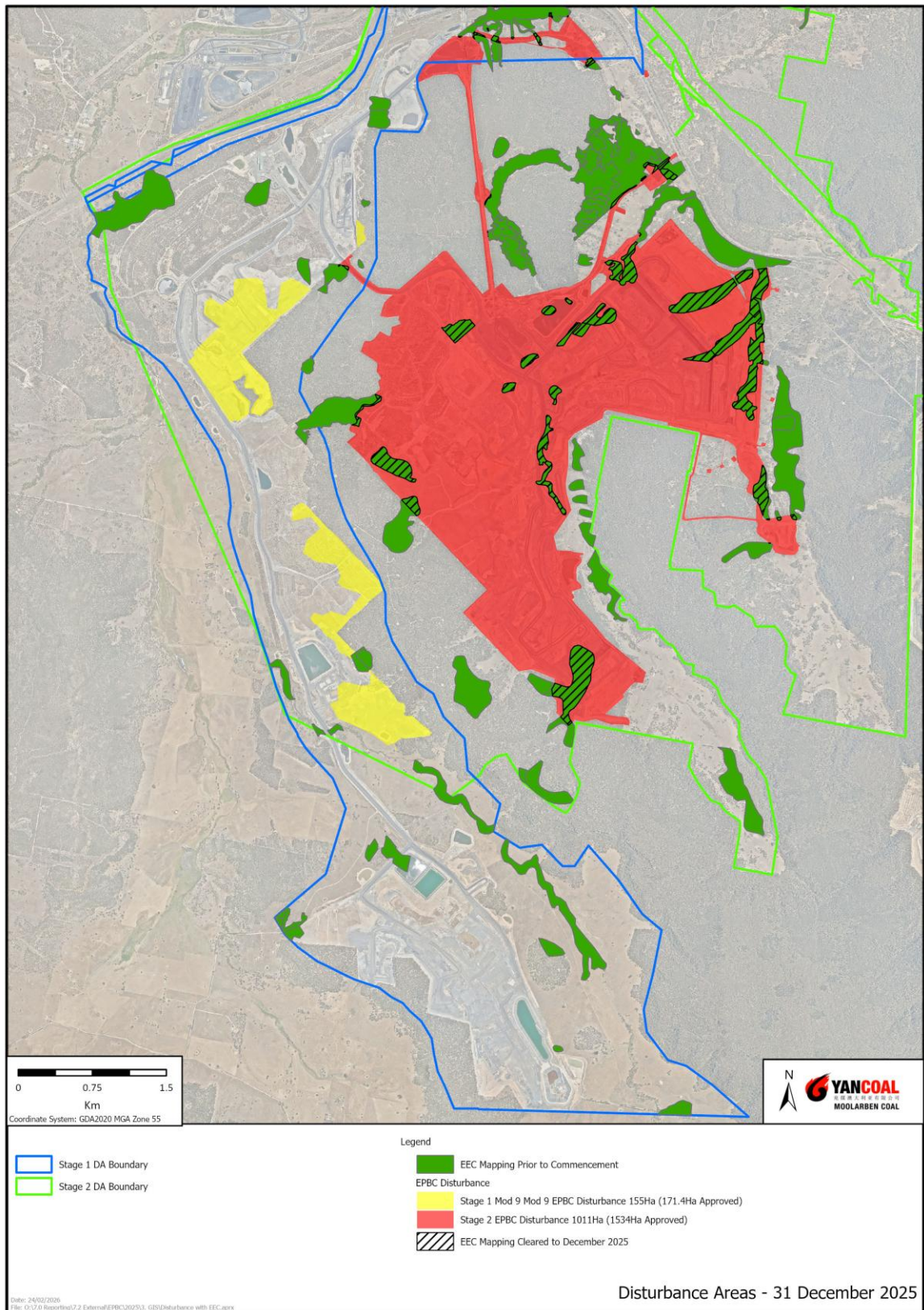


Figure D3 – Moolarmoo and onsite offset assisted revegetation areas



**APPENDIX E – Summary of EPBC disturbance activities**



**Figure E1 – Cumulative disturbance as of 31 December 2025**