



**Resources
Regulator**

ARR0001710

STRATFORD COAL MINE ANNUAL REHABILITATION REPORT

Wednesday 1 January 2025 to Wednesday 31 December 2025

Summary table

Detail	
Mine	Stratford Coal Mine
Reference	ARR0001710
Annual report period commencement date	Wednesday 1 January 2025
Annual report period end date	Wednesday 31 December 2025
Forward program	FWP0001598
Mining leases	ML 1360 (1992), ML 1538 (1992), ML 1577 (1992), ML 1733 (1992), ML 1787 (1992), ML 1528 (1992), ML 1409 (1992), ML 1447 (1992), ML 1521 (1992)
Lease holder(s)	Cim Stratford Pty Ltd, Gloucester Coal Pty Ltd
Contact	Thomas Kirkwood
Date of submission	Monday 30 March 2026
Document URL	https://www.yancoal.com.au/our-sites/stratford/stratford-documents-page/
<small>Security reminder: Please exercise caution before opening external links. If a link appears suspicious, avoid clicking it and report it to the Resources Regulator.</small>	

Important

The department may make the information in your program and any supporting information available for inspection by members of the public, including by publication on its website or by displaying the information at any of its offices. If you consider any part of your program to be confidential, please communicate this to the department via the message function on this submission within the Resources Regulator Portal.

Mine Details

Project description

Stratford Coal Pty Ltd (SCPL), a wholly owned subsidiary of Yancoal Australia Limited (Yancoal), owns and operates the Stratford Mining Complex (SMC), which is located approximately 100 kilometres (km) north of Newcastle, New South Wales (NSW). Development of the SMC is approved under Development Consent (SSD-4966) and occurs within Mining Leases (MLs) 1577, 1528, 1360, 1409, 1447, 1538, 1521, 1733 and 1787. Condition 5, Schedule 2 of the Development Consent (SSD-4966) authorises mining operations to be carried at the SMC until 31 December 2025. Mining operations at the SMC ceased in May 2024, and the site has since transitioned into rehabilitation and closure activities, including bulk earthworks.

Life of mine

0 years

Current development consents, leases and licences

Development consents granted under the *Environmental Planning and Assessment Act 1979*

SSD4966 (MOD2)
SSD4966 (MOD2)

SSD4966 (MOD2)
SSD4966 (MOD2)
SSD4966 (MOD2)
SSD4966 (MOD2)
SSD4966 (MOD2)
SSD4966 (MOD2)
SSD4966 (MOD2)
SSD4966 (MOD2)
SSD4966 (MOD2)
SSD4966 (MOD2)
SSD4966 (MOD2)
SSD4966 (MOD2)

Authorisations covering the mining area granted under the *Mining Act 1992*

ML 1360 (1992), ML 1538 (1992), ML 1577 (1992), ML 1733 (1992), ML 1787 (1992), ML 1528 (1992), ML 1409 (1992), ML 1447 (1992), ML 1521 (1992)

Any other approvals, licences, or authorities issued by government agencies that are relevant to the progress of mining operation and rehabilitation activities

EPL5161, EPBC 2011/6176

Summary of the scope and/or purpose of the new applications or modifications to existing approvals (if applicable)

Nil

Changes to land ownership and land use

STRATFORD COAL MINE ANNUAL REHABILITATION REPORT

ARR0001710 | Wednesday 1 January 2025 to Wednesday 31 December 2025

**Resources
Regulator**

No changes to land ownership and land use related to SMC land occurred during the Annual Reporting Period (ARP) (1 January 2025 to 31 December 2025).

Surface disturbance and rehabilitation activities during the reporting period

Surface disturbance and rehabilitation activities that were conducted and an analysis of the progress against the rehabilitation schedule

Mining operations at the Stratford Mining Complex ceased in May 2024, and the site has since transitioned into the mine closure phase. During the 2025 Annual Reporting Period (ARP), activities primarily focused on mine closure civil works and progressing rehabilitation. Surface disturbance during the ARP was limited and associated with closure-related earthworks for the construction of the upgraded Roseville West Flood Bund. Rehabilitation activities undertaken during the ARP included: • Backfilling and landform establishment at the Bowens Road North Pit, with large areas progressing to ecosystem and land use establishment. • Backfilling and landform establishment at the Roseville West Pit. • Backfilling of the Stratford East Pit. • Removal of material from the Co-Disposal Area. • Bulk shaping and landform establishment within the Stratford Main Pit. • Landform establishment and ecosystem and land use establishment work surrounding the Avon North Pit. • Decommissioning of the Coal Handling and Preparation Plant (CHPP), including removal of infrastructure in preparation for future landform establishment. The previous Forward Program anticipated rehabilitation in areas including the Turkey's Nest and Stratford East Pit. However, changes to closure sequencing and operational priorities shifted the timing and location of several planned rehabilitation activities

Rehabilitation planning activities that were conducted, including any specialist studies

The rehabilitation strategy developed as part of the Stratford Extension Project (SEP) Environmental Impact Statement (EIS) was conceptual in nature. As such, detailed design of the final landform at the SMC has occurred during the mine life, particularly in recent years as the SMC has neared the completion of mining operations, noting that the SMC ceased mining operations in May 2024. The majority of the assessments/studies have been completed progressively and have been used to refine the conceptual rehabilitation strategy described in the EIS, including refinement of the detailed design of the final landform at the SMC to ensure the final landform

is safe, stable and non-polluting in perpetuity. During the ARP, these technical closure studies have included: • detailed final landform and land use design; • surface water modelling; • groundwater modelling; • geochemical modelling and assessment; • geotechnical assessment; • landform erosion assessment; • contaminated sites assessment; and • decommissioning and demolition plan. Following completion of technical closure studies, a revised FLRP will be submitted to the Resources Regulator, in addition to a revised ROBJ (if relevant). Further refinement of technical closure studies and rehabilitation planning will continue into 2026 to validate that the proposed final landform will be safe, stable and non-polluting to achieve future rehabilitation signoff and lease relinquishment.

Overview of subsidence repair and/or remediation works undertaken

The SMC was an open cut mining operation and therefore has no areas affected by underground mining subsidence.

Overview of rehabilitation management and maintenance activities

Ongoing management and maintenance of rehabilitation areas at the SMC has been undertaken by SCPL and suitably qualified persons (where relevant) to determine when an ESF2 may be submitted to the NSW Resources Regulator to confirm that rehabilitated areas have achieved a standard capable of relinquishment. To date, no ESF2 applications have been submitted to the NSW Resources Regulator. Ongoing rehabilitation management and maintenance activities at the SMC include: • Spraying and manual removal of weeds in established rehabilitation areas. • Pest animal control of rehabilitation areas. • Native vegetation rehabilitation management and agricultural monitoring. During the ARP, maintenance activities in areas dedicated to Domain B (Agricultural – Grazing) focused on the improvement of pasture across the Stratford Waste Emplacement. Weed control has been undertaken across all rehabilitation areas targeting lantana, blackberry and wild tobacco.

Details of any rehabilitation actions taken as required by any letters, notices or directions issued by government agencies, including the Resources Regulator

No letters, notices or directions issued by government agencies (including the NSW Resources Regulator) have been issued. As such, there has been no directive to undertake specific rehabilitation actions.

Details of any rehabilitation areas that have achieved the final land use

STRATFORD COAL MINE ANNUAL REHABILITATION REPORT

ARR0001710 | Wednesday 1 January 2025 to Wednesday 31 December 2025

**Resources
Regulator**

No rehabilitation areas have achieved final land use at the SMC.

Key production milestones

MATERIAL	UNIT	FWP0001598 YEAR1	THIS REPORT
Stripped topsoil (if applicable)	(m ³)	0	0
Rock/overburden	(m ³)	2,878,150	2,595,384
Ore	(Mt)	0	0
Reject material¹	(Mt)	0	0
Product	(Mt)	0	0

¹This includes coarse rejects, tailings and any other wastes resulting from beneficiation.

Disturbance and rehabilitation statistics

Current disturbance and rehabilitation progression

ELEMENT		UNIT	THIS REPORT
A1	Total disturbance footprint - surface disturbance	(ha)	762.86
B	Total active disturbance	(ha)	403.4
C	Rehabilitation - land preparation	(ha)	78.35
D	Ecosystem and land use establishment	(ha)	281.11
E	Ecosystem and land use development	(ha)	0
F	Rehabilitation completion	(ha)	0

Rehabilitation key performance indicators (KPIs)

ELEMENT		UNIT	THIS REPORT
G	New disturbance area	(ha)	4.71
H	New rehabilitation commenced during annual reporting period	(ha)	57.7
I	Established rehabilitation	(ha)	0
J	Annual rehabilitation to disturbance ratio	%	12.25
K	Rehabilitated land to total mine footprint	%	0

Progressive achievement of established rehabilitation

	ELEMENT	UNIT	THIS REPORT
L	Established rehabilitation for agricultural final land uses	%	0
M	Established rehabilitation for native ecosystem final land uses	%	0
N	Established rehabilitation for other/non-vegetated final land uses	%	0

Variation to the rehabilitation schedule

Identify the components of the most recent forward program that were not achieved

The previous Forward Program anticipated rehabilitation of areas including the Turkey’s Nest Waste Emplacement area and Stratford East Pit during the reporting period. While progressive rehabilitation continued across the site, rehabilitation of these areas did not progress as originally anticipated due to factors surrounding refinement of the Detailed Mine Closure Plan and refined final landform. The Turkeys Nest Waste Emplacement was scheduled for rehandling, shaping and rehabilitation. This work is expected to commence in H2 2026 (Plan 2a SMC 2025 Forward Program). The Stratford East Pit Is being progressively backfilled with material sourced from the Co-disposal area and the nearby Stratford East waste emplacement areas. This backfilling work is anticipated to be completed in late 2027 and following this, rehabilitation of these areas will commence (Plan 2b SMC 2025 Forward Program).

Key factors that delayed progressive rehabilitation

Rehabilitation activities within portions of the Turkey's Nest and Stratford East Pit were deferred due to adjustments to work sequencing associated with finalising elements of the final landform and prioritising bulk shaping and rehabilitation activities in other areas as they became available. No corrective actions are proposed or required.

Outline actions that will be included in the forward program and carried out to minimise disturbance and undertake progressive rehabilitation as far as reasonably practical

N/A

Rehabilitation monitoring and research findings

Rehabilitation monitoring

The rehabilitation monitoring carried out in the annual reporting period

[Redacted]

Status of performance against rehabilitation objectives and rehabilitation completion criteria

The monitoring program that has been implemented

[Redacted]

Are all rehabilitation areas in Landform Establishment phase or higher represented in the monitoring program to assess performance against the rehabilitation objectives and approved or, if not yet approved rehabilitation completion criteria and final landform and rehabilitation plan?

Yes

Year rehabilitation areas will be included as part of the monitoring program

[Redacted]

An appraisal of whether rehabilitation is moving towards achieving the proposed rehabilitation objectives, approved or, if not yet approved, rehabilitation completion criteria and final landform and rehabilitation plan as soon as reasonably practicable.

[Redacted]

Appraisal description

Rehabilitation is moving towards achieving the final land use as soon as reasonably practicable.

Rehabilitation monitoring program findings

Performance issues and their causes including identification of any knowledge gaps that must be addressed

N/A

Outcomes of rehabilitation research and trials

RRT NUMBER	PROJECT/TRIAL NAME	OBJECTIVE OF TRIAL/PROJECT	METHODOLOGY	EXPECTED DATE OF COMPLETION	STATUS	ON TRACK?
RRT0001162	Recovered subsoil Growth Medium	Assess the performance of recovered subsoil material, following laboratory testing and gypsum amelioration to address elevated Exchangeable Sodium Percentage (ESP), as a growth medium for rehab	Recovered subsoil material was sampled and analysed to determine key material properties. Laboratory results identified elevated Exchangeable Sodium Percentage (ESP) as the primary constraint affecting soil structure. Gypsum was applied to ameliorate sodicity and improve soil structure prior to use as a growth medium. The ameliorated subsoil was placed within rehabilitation areas and seeded with species consistent with the target vegetation communities, with vegetation establishment monitored.	31 Jan 2027	Ongoing	Yes

Outcomes of completed trials and research

N/A

Attachment 1 - Reporting Definitions

REPORTING CATEGORY		DEFINITION
A1	Total disturbance footprint - surface disturbance	<p>All areas within a mining lease that either have at some point in time or continue to pose a rehabilitation liability due to surface disturbance activities.</p> <p>The total disturbance footprint is the sum of the total active disturbance, decommissioning, landform establishment, growth medium development, ecosystem and land use establishment, ecosystem and land use development and rehabilitation completion (see definitions below).</p> <p>Underground mining operations should not include the footprint of underground mining areas/subsidence management areas in the total disturbance footprint.</p>
A2	Underground Mining Area	Underground mining operations areas/subsidence management areas.
B	Total active disturbance	Includes on-lease exploration areas, stripped areas ahead of mining, infrastructure areas, water management infrastructure, sewage treatment facilities, topsoil stockpile areas, access tracks and haul roads, active mining areas, waste rock emplacements (active/unshaped/in or out-of-pit), tailings dams (active/unshaped/uncapped) and temporary stabilised areas (e.g. areas sown with temporary cover crops for dust mitigation and temporary rehabilitation).
C	Rehabilitation - land preparation	Includes the sum of all disturbed land within a mining lease that have commenced any, or all, of

REPORTING CATEGORY		DEFINITION
		<p>the following phases of rehabilitation - decommissioning, landform establishment and growth medium development.</p> <p>Refer to the glossary of terms in this document for the definition of these phases of rehabilitation.</p>
D	Ecosystem and land use establishment	<p>Includes the area which has been seeded/planted with the target vegetation species for the intended final land use. However, vegetation has not matured to a stage where it can be demonstrated that it will be sustainable for the long term and or require only a maintenance regime consistent with target reference/analogue sites.</p> <p>Typically, rehabilitation areas would be in this phase for at least two years (and usually more) before rehabilitation can be classified as being in the ecosystem and land use development phase. This phase does not apply to infrastructure areas that are being retained as part of final land use for the site.</p>
E	Ecosystem and Land Use Development	<p>Rehabilitation has matured to a level where target revegetation outcomes are on a trajectory towards meeting the final rehabilitation objectives and rehabilitation completion criteria (as verified by monitoring).</p> <p>This phase includes infrastructure areas that are to be retained for an approved post mining land use, following completion of all necessary measures to render the infrastructure fit for this purpose (for example structural integrity).</p>

REPORTING CATEGORY		DEFINITION
F	Rehabilitation Completion	The Resources Regulator has determined in writing that the mining area has achieved the approved rehabilitation objectives and approved rehabilitation completion criteria and final landform and rehabilitation plan following the submission of Form: <i>Rehabilitation completion and/or review of rehabilitation cost estimate and/or notification of mine or petroleum site closure</i> .
G	New active disturbance area	The area of any new active disturbance that has been created during the annual reporting period (definition A1 in Table 5).
H	New rehabilitation commenced during annual reporting period	The sum of any new rehabilitation commenced in the annual reporting period. These areas may be in the rehabilitation land preparation phase or the ecosystem & land use establishment phase (definitions C and D in Table 5).
I	Established rehabilitation (hectares)	The total area of land that is verified to be within either the ecosystem and land use development phase or the rehabilitation completion phase (definitions E & F in Table 5).
J	Annual rehabilitation to disturbance ratio	The rehabilitation to disturbance ratio (H/G) indicates how many hectares of new rehabilitation are undertaken for each hectare of land disturbed during the year. A ratio of 1/1 indicates that the area of new rehabilitation and disturbance in that year are the same.
K	% Rehabilitated land to total mine footprint	The proportion of the total mine footprint (area of land that has been disturbed by past or present surface disturbance activities) that has established rehabilitation ($I/A1 \times 100$). For open cut mining, the proportion of the total mine footprint verified to be "established rehabilitation" should substantially increase as an operation progresses towards mine closure.

REPORTING CATEGORY		DEFINITION
L	Established rehabilitation for agricultural final land uses (hectares)	The percentage of total area of land that is verified to be within either the ecosystem and land use development phase or the rehabilitation completion phase (definitions E & F in Table 5) that have been returned to an agricultural final land use.
M	Established rehabilitation for native ecosystem final land uses (hectares)	The percentage of total area of land that is verified to be within either the ecosystem and land use development phase or rehabilitation completion phase (definitions E & F in Table 5) that have been returned to native ecosystem final land use.
N	Established rehabilitation for other/non-vegetated final land uses (hectares)	The percentage of total area of land that is verified to be within either the ecosystem and land use development phase or the rehabilitation completion phase (definitions E & F in Table 5) that have been returned to other/non-vegetated final land use.

Attachment 2 - Definitions

WORD	DEFINITION
Active	In the context of rehabilitation, land associated with mining domains is considered 'active' for the period following disturbance until the commencement of rehabilitation.
Active mining phase of rehabilitation	In the context of rehabilitation, the active mining phase of rehabilitation constitutes the rehabilitation activities undertaken during mining operations such as salvaging and managing soil resources, salvaging habitat resources, and native seed collection. This phase also includes management actions taken during operations to manage risks to rehabilitation and enhance rehabilitation outcomes such as selective handling of waste rock and management of tailings emplacements.
Analogue site	In the context of rehabilitation, an analogue site is a 'reference site' that represents an example of the defining characteristics (such as vegetation composition and structure or agricultural productivity) of the final land use. Characteristics of analogue sites can be assessed to develop the rehabilitation objectives and completion criteria for final land use domains.
Annual rehabilitation report and forward program	As described in the Mining Regulation 2016.
Annual reporting period	As defined in the Mining Regulation 2016.
Closure	A whole-of-mine-life process, which typically culminates in the relinquishment of the mining lease. It includes decommissioning and rehabilitation to achieve the approved final land use(s).

WORD	DEFINITION
Decommissioning	The process of removing mining infrastructure and removing contaminants and hazardous materials.
Decommissioning Phase of Rehabilitation	Activities associated with the removal of mining infrastructure and removal and/or remediation of contaminants and hazardous materials. In the context of the rehabilitation management plan this phase of rehabilitation may also include studies and assessments associated with decommissioning and demolition of infrastructure or works carried out to make safe or 'fit for purpose' built infrastructure to be retained for future use(s) following lease relinquishment.
Department	Department of Primary Industries and Regional Development.
Disturbance	See Surface Disturbance.
Disturbance area	<p>An area that has been disturbed and that requires rehabilitation.</p> <p>This may include areas such as on-licence exploration areas, stripped areas ahead of mining, infrastructure areas, water management infrastructure, sewage treatment facilities, topsoil stockpile areas, access tracks and haul roads, active mining areas, waste emplacements (active/unshaped/in or out-of-pit), tailings dams (active/unshaped/uncapped), and areas requiring rehabilitation that are temporarily stabilised (i.e. managed to minimise dust generation and/or erosion).</p>
Domain	An area (or areas) of the land that has been disturbed by mining and has a specific operational use (mining domain) or specific final land use (final land use domain). Land within a domain typically has similar geochemical and/or geophysical characteristics and therefore requires specific rehabilitation

WORD	DEFINITION
	activities to achieve the associated final land use.
Ecosystem and Land Use Development	<p>This phase of rehabilitation consists of the activities to manage maturing rehabilitation areas on a trajectory to achieving the approved rehabilitation objectives and completion criteria.</p> <p>For vegetated land uses this phase may include processes to develop characteristics of functional self-sustaining ecosystems, such as nutrient recycling, vegetation flowering and reproduction, and increasing habitat complexity, and development of a productive, self-sustaining soil profile.</p> <p>This phase of rehabilitation may include specific vegetation management strategies and maintenance such as tree thinning, supplementary plantings and weed management.</p>
Ecosystem and Land Use Establishment	<p>This phase of rehabilitation consists of the processes to establish the approved final land use following construction of the final landform.</p> <p>For vegetated land uses this rehabilitation phase includes establishing the desired vegetation community and implementing land management activities such as weed control. This phase of rehabilitation may also include habitat augmentation such as installation of nest boxes.</p>
Exploration	Has the same meaning as that term under the State Environmental Planning Policy (Mining, Petroleum Production and Extractive Industries) 2007.
Final landform and rehabilitation plan	As defined in the Mining Regulation 2016.

WORD	DEFINITION
Final land use	As defined in the Mining Regulation 2016.
Form and way	Means the form and way approved by the Secretary. Approved form and way documents are available on the department's website.
Growth Medium Development	<p>This phase of rehabilitation consists of activities required to establish the physical, chemical and biological components of the substrate required to establish the desired vegetation community (including short lived pioneer species).</p> <p>This phase may include spreading the prepared landform with topsoil and/or subsoil and/or soil substitutes, applying soil ameliorants to enhance the physical, chemical and biological characteristics of the growth media, and actions to minimise loss of growth media due to erosion.</p>
Habitat	Has the same meaning as that term under the Biodiversity Conservation Act 2016 and the Fisheries Management Act 1994 (as relevant).
Indicator	An attribute of the biophysical environment (e.g. pH, topsoil depth, biomass) that can be used to approximate the progression of a biophysical process. It can be measured and audited to demonstrate (and track) the progress of an aspect of rehabilitation towards a desired completion criterion (i.e. defined end point). It may be aligned to an established protocol and used to evaluate changes in a system.
Land	As defined in the Mining Act 1992.

WORD	DEFINITION
Landform Establishment	<p>This phase of rehabilitation consists of the processes and activities required to construct the final landform.</p> <p>In addition to profiling the surface of rehabilitation areas to the approved final landform profile this phase may include works to construct surface water drainage features, encapsulate problematic materials such as tailings, and prepare a substrate with the desired physical and chemical characteristics (e.g. rock raking or ameliorating sodic materials).</p>
Large mine	As defined in the Mining Regulation 2016.
Lease holder	The holder of a mining lease.
Life of mine	The timeframe of how long a mine is approved to mine, from commencement to closure.
Mine rehabilitation portal	<p>Means the Resources Regulator's online portal that lease holders must use (via a registered account) to:</p> <ul style="list-style-type: none"> ▪ upload rehabilitation geographical information system (GIS) spatial data ▪ develop rehabilitation GIS spatial data (using online tracing functions) ▪ generate rehabilitation plans and rehabilitation statistics using the map viewer and Rehabilitation Key Performance Indicator functionalities. <p>Data submitted to the mine rehabilitation portal is collated in a centralised geodatabase for use by</p>

WORD	DEFINITION
	the Resources Regulator to regulate rehabilitation performance of lease holders.
Mining area	As defined in the Mining Act 1992.
Mining domain	A land management unit with a discrete operational function (e.g. overburden emplacement), and therefore similar geophysical characteristics, that will require specific rehabilitation treatments to achieve the final land use(s).
Mining land	As defined in the Mining Act 1992.
Native vegetation	Has the same meaning as that term under section 60B of the Local Land Services Act 2013.
Overburden	Material overlying coal or a mineral deposit.
Performance indicator	An attribute of the biophysical environment (for example pH, slope, topsoil depth, biomass) that can be used to demonstrate achievement of a rehabilitation objective. It can be measured and audited to demonstrate (and track) the progress of an aspect of rehabilitation towards a desired completion criterion, that is, a defined end point. It may be aligned to an established protocol and used to evaluate changes in a system.
Phases of rehabilitation	The stages and sequences of actions required to rehabilitate disturbed land to achieve the final land use. The phases of rehabilitation are:

WORD	DEFINITION
	<ul style="list-style-type: none"> ▪ active mining ▪ decommissioning ▪ landform Establishment ▪ growth medium development ▪ landform Establishment ▪ ecosystem and land use establishment ▪ ecosystem and land use development
Progressive rehabilitation	The progress of rehabilitation towards achieving the approved rehabilitation completion criteria. This may be described in terms of domains, phases, performance indicators and rehabilitation completion criteria.
Rehabilitation Completion	The final phase of rehabilitation when a rehabilitation area has achieved the approved rehabilitation objectives and rehabilitation completion criteria for the final land use. Rehabilitation areas may be classified as complete when the Resources Regulator has determined in writing that the relevant rehabilitation obligations have been fulfilled following submission of <i>Form ESF2 Rehabilitation completion and/or review of rehabilitation cost estimate application</i> by the lease holder.
Rehabilitation Completion criteria	As defined in the Mining Regulation 2016.
Rehabilitation cost estimate	As defined in the Mining Regulation 2016.

WORD	DEFINITION
Rehabilitation management plan	As defined in the Mining Regulation 2016.
Rehabilitation objectives	As defined in the Mining Regulation 2016.
Rehabilitation risk assessment	As defined in the Mining Regulation 2016.
Rehabilitation schedule	The defined timeframes for progressive rehabilitation set out in the forward program.
Relevant stakeholders	<p>Means any persons or bodies who may be affected by the mining operations, including rehabilitation, carried out on the lease land, and includes:</p> <ul style="list-style-type: none"> ▪ the relevant development consent authority ▪ the local council ▪ the relevant landholder(s) ▪ community consultative committee (if required under the development consent) or equivalent consultative group ▪ affected land holder(s) ▪ government agencies relevant to the final land use ▪ affected infrastructure authorities (electricity, telecommunications, water, pipeline, road, rail authorities) ▪ local Aboriginal communities, and ▪ any other person or body determined by the Minister to be a relevant stakeholder in relation to

WORD	DEFINITION
	a mining lease.
Risk	The effect of uncertainty on objectives. It is measured in terms of consequences and likelihood (AS/NZS ISO 31000:2009).
Secretary	The Secretary of the department.
Security deposit	An amount that a mining lease holder is required to provide and maintain under a mining lease condition, to secure funding for the fulfilment of obligations under the lease (including obligations that may arise in the future).
Surface disturbance	Includes activities that disturb the surface of the mining area, including mining operations, ancillary mining activities and exploration.
Tailings	A combination of the fine-grained solid material remaining after the recoverable metals and minerals have been extracted from the mined ore, and any process water ² .
Waste	Has the same meaning as that term under the <i>Protection of the Environment Operations Act 1997</i> .

²Commonwealth of Australia (DITR), 2007. Tailings Management.

Attachment 3 - Rehabilitation Complaints

DATE	COMPLAINANT	COMPLAINT DETAILS	RESPONSE DETAILS	STATUS OF RESPONSE	DATE RESPONSE COMPLETED (IF APPLICABLE)
------	-------------	-------------------	------------------	--------------------	---

Attachment 4 - Stakeholder consultation

DATE	STAKEHOLDER	CONSULTATION ACTIVITIES AND FORMS	MATTERS SUBJECT TO CONSULTATION	ACTIONS TAKEN
3 Jun 2023	Resources Regulator	Via email	SMC ROBJ	Provided the Resources Regulator with a reconciliation table detailing the manner in which each of the Resources Regulator’s review comments on the SMC ROBJ were addressed.
12 Apr 2023	Resources Regulator	Via email	Amended SMC ROBJ and FLRP	Resources Regulator confirmation emails requesting a response to their review comments on the SMC ROBJ and FLRP by 17 May 2023.
29 Nov 2022	Resources Regulator	Via Email.	Review of SMC Rehabilitation Objectives Statement (ROBJ) and request for resubmission by 31/01/2023.	Requested an extension (on 23/12/2022) for resubmission of the SMC ROBJ to 28/02/2023.
18 Jan 2023	Resources Regulator	Virtual meeting	Rehabilitation Outcome Documents for the SMC	Resubmitted SMC Final Landform and Rehabilitation Plan (FLRP), as well as the Rehabilitation Objectives Statement (ROBJ).
30 Mar 2023	Resources Regulator	Via phone	SMC Annual Rehabilitation Report and Forward Program (ARRFP)	Ongoing communication with the Resources Regulator regarding technical difficulties submitting the SMC ARRFP through the

STRATFORD COAL MINE ANNUAL REHABILITATION REPORT

ARR0001710 | Wednesday 1 January 2025 to Wednesday 31 December 2025

Resources Regulator

				Resources Regulator's Portal.
18 Apr 2023	Resources Regulator	Via email	SMC FLRP	Resources Regulator confirming that the letter provided on 22 December 2023 was considered in their review of the SMC FLRP.
22 Aug 2023	Resources Regulator	Via email	SMC ROBJ	Resources Regulator providing formal approval of the SMC ROBJ, including PDF.
21 Sep 2023	Resources Regulator	Via email	SMC Rehabilitation Completion Criteria Statement (RCC)	Resources Regulator advising that the RCC Statement would only need to be lodged with the Resources Regulator when formal signoff on rehabilitation would be taking place with the next Forward Program period.
13 Mar 2023	Resources Regulator	Via phone	SMC ARRF	Ongoing communication with the Resources Regulator regarding linkage of the relevant SMC ARRF spatial data between the Mine Rehabilitation Portal and Resources Regulator's Portal.
27 Apr 2023	Resources Regulator	Via email	SMC ROBJ	SCPL advising the Resources Regulator that the SMC ROBJ has been resubmitted for approval.
7 Jul 2022	Philip Greenwood (Community Consultative Committee)	Via email.	Review of SMC RMP.	Incorporated Philip Greenwood's review comments into the revised SMC RMP.

STRATFORD COAL MINE ANNUAL REHABILITATION REPORT

ARR0001710 | Wednesday 1 January 2025 to Wednesday 31 December 2025

Resources Regulator

4 Jul 2022	Philip Greenwood (Community Consultative Committee)	Via email.	Review of Stratford Mining Complex (SMC) Rehabilitation Management Plan (RMP).	Incorporated Philip Greenwood's review comments into the revised SMC RMP.
23 Sep 2022	MidCoast Council	Via email.	Review of SMC RMP.	Incorporated MidCoast Council review comments into the revised SMC RMP
23 Jan 2025	Resources Regulator	Meeting via Microsoft Teams	Stratford Rail Loop removal consultation	Nil
1 Feb 2025	Stratford Coal Community Consultative Committee	Stratford Coal Community Consultative Committee In-person meeting	Update on operational activities, progress of rehabilitation and closure works, and mine closure planning.	Nil
12 Jul 2022	Biodiversity and Conservation Division	Via the Department of Planning and Environment's Major Projects Portal. Email reply.	Review of SMC RMP.	Incorporated BCD review comments into the revised SMC RMP.
12 Mar 2025	Resources Regulator	Meeting via Microsoft Teams	Closure planning update	Ongoing quarterly closure planning update meetings to continue
19 Aug 2022	Department of Planning and Environment: Water	Via the Department of Planning and Environment's Major Projects Portal. Email	Review of SMC RMP	Incorporated DPE Water review comments into the revised SMC RMP.

		reply.		
24 Nov 2022	Resources Regulator	Via Email.	Review of SMC Final Landform and Rehabilitation Plan (FLRP) and request for resubmission by 05/01/2023.	22/12/2022. Provided letter to the Resources Regulator on 22/12/2022 detailing the manner in which each of the review comments on the SMC FLRP were addressed. Requested an extension (on 22/12/2022) for submission of the non mandatory Final Landform Features theme to 05/04/2022.
14 Apr 2025	Community	Newsletter	Community newsletter including a closure and rehabilitation update for the SMC.	Nil
1 Jul 2025	Resources Regulator	Meeting via Microsoft Teams	Closure planning update	Ongoing quarterly closure planning update meetings to continue
3 Apr 2023	Resources Regulator	Virtual meeting	Meeting held between SCPL and Resources Regulator to discuss matters including commentary on the SMC ROBJ. Request for outstanding matters to be addressed in an amended submission before 17/05/2023.	SMC ROBJ amended and resubmitted on 27/04/2023 to the Title Holder's Portal. Provided a tracked changes version of the SMC ROBJ to indicate where amendments were made from previous rehabilitation objectives.
29 Jul 2025	Resources Regulator	Meeting and site visit	TAP - Decommissioning	Action Plan developed to address TAP recommendations, including updates to the Rehabilitation Risk Assessment, Rehabilitation Management Plan and Forward Program.
12 May 2023	Resources Regulator	Via email	SMC FLRP	SCPL advising the Resources Regulator that the

STRATFORD COAL MINE ANNUAL REHABILITATION REPORT

ARR0001710 | Wednesday 1 January 2025 to Wednesday 31 December 2025

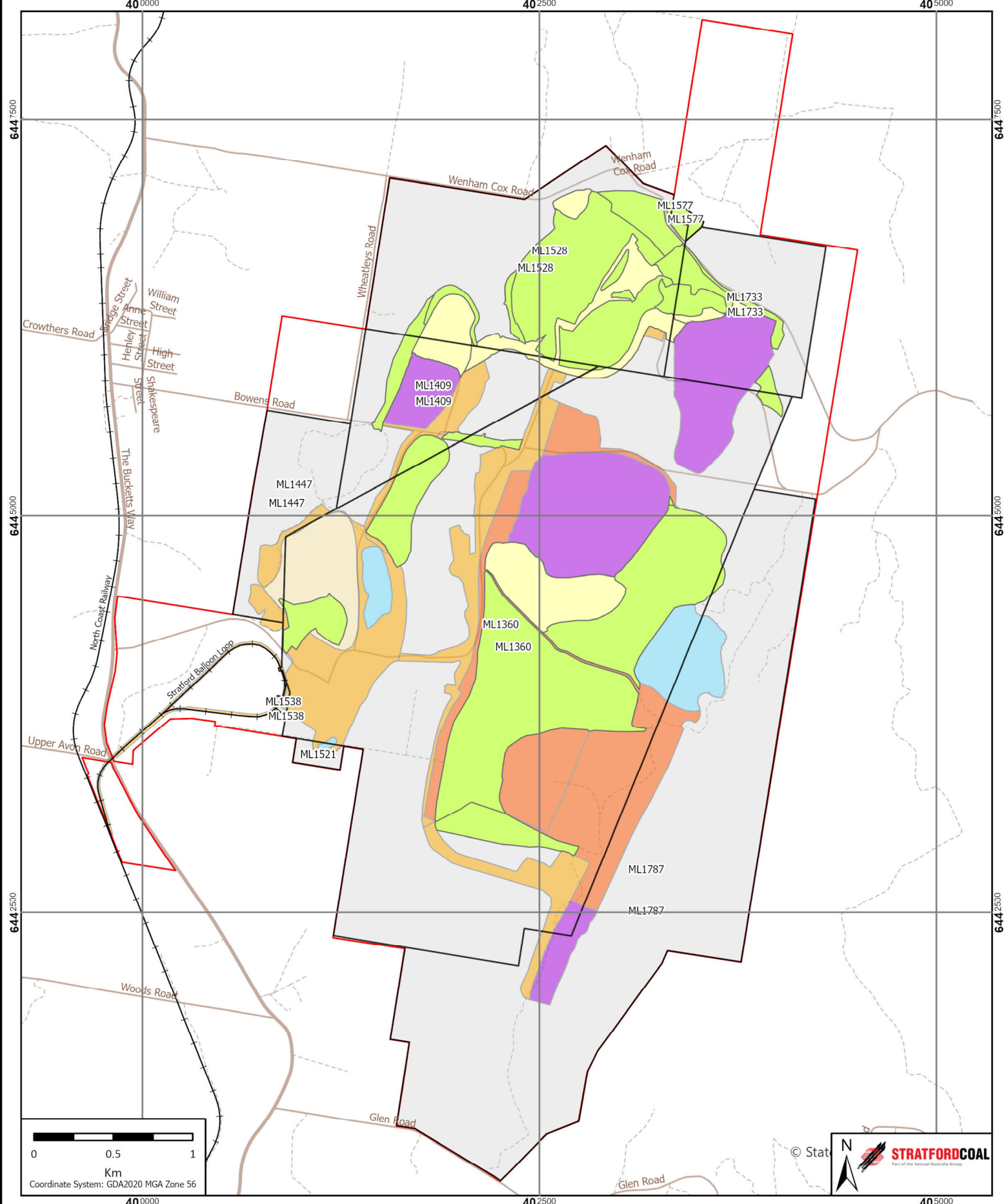
Resources Regulator

				SMC FLRP has been resubmitted for approval.
21 Aug 2025	Stratford Coal Community Consultative Committee	Stratford Coal Community Consultative Committee In-person meeting	Update on operational activities, progress of rehabilitation and closure works, and mine closure planning.	Ongoing communication with the SMC CCC regarding updates to mine closure, decommissioning and rehabilitation.
28 Aug 2025	Community	Community Newsletter	Community newsletter including a closure and rehabilitation update for the SMC.	Nil
20 Nov 2025	Resources Regulator	Meeting via Microsoft Teams	Closure planning update	Ongoing quarterly closure planning update meetings to continue
9 Dec 2025	Community	Community Newsletter	Community newsletter including a closure and rehabilitation update for the SMC.	Nil
22 Aug 2023	Resources Regulator	Via email	SMC FLRP	Resources Regulator providing formal approval of the SMC FLRP.
2 Jun 2023	Resources Regulator	Via email	SMC ROBJ and FLRP	Resources Regulator provisional approval of the SMC ROBJ and FLRP.

Attachment 5 - Plans

Plan 1A attachment not provided.

Plan 1B attachment not provided.

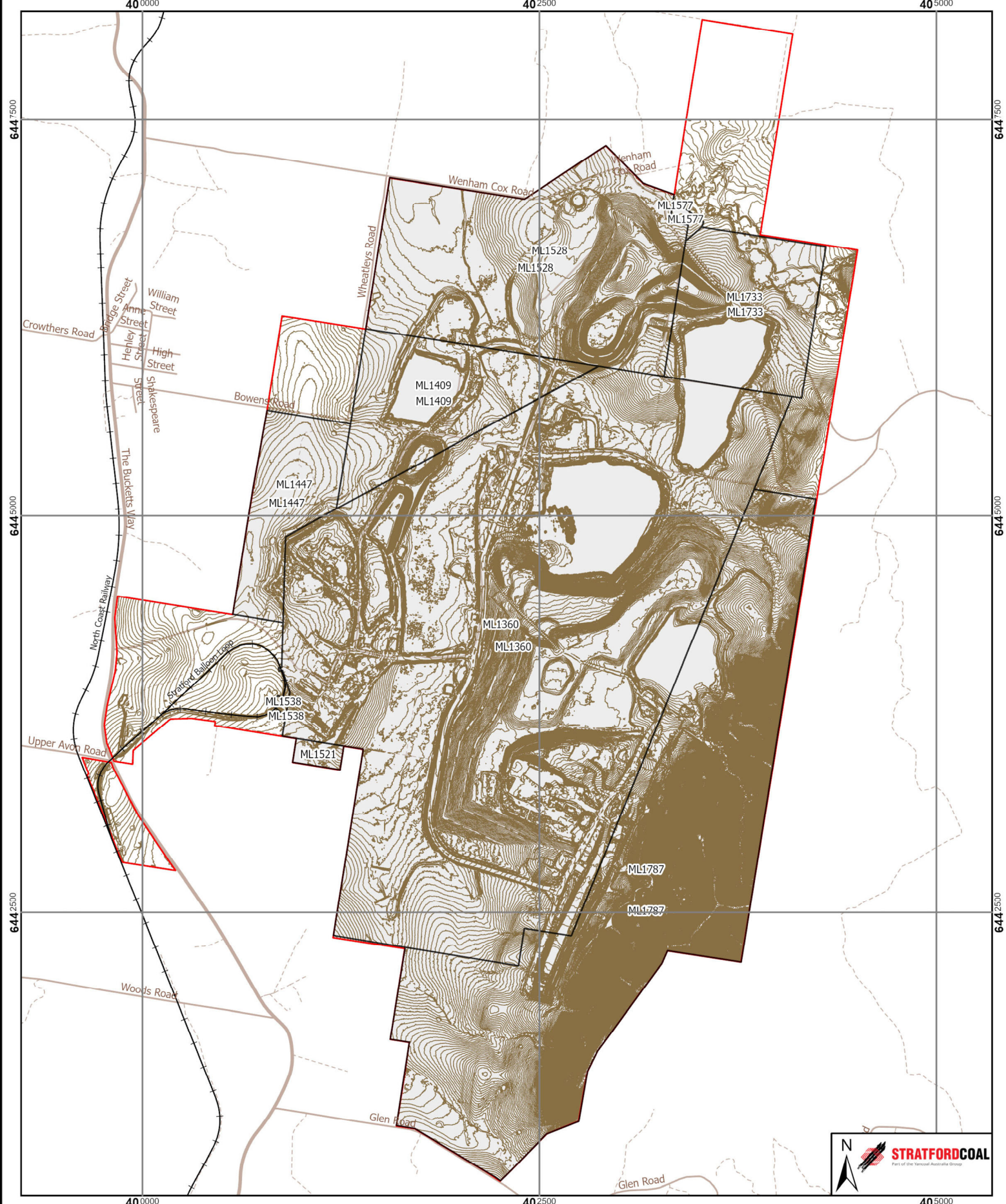


Legend

Project Approval Boundary	Active Mining Area (Open cut void)	Ecosystem and Land Use Development
Mining Lease Boundary	Beneficiation Facility	Ecosystem and Land Use Establishment
Main Road	Infrastructure Area	Landform Establishment
Local Road	Overburden Emplacement Area	
Unsealed Road	Water Management Area	
Railway Line		

Plan 1a
Current Status of Mining and Rehabilitation
(2025 Annual Reporting Period)

Date: 25/03/2026
File: C:\Users\stratf\OneDrive - vnccoal.com.au\41\ArcGIS\SDM\02_PROJECTS\Portal and EIR Data\November 2025\Stratford 2025 Forecast Program



Legend

- Project Approval Boundary
- Mining Lease Boundary
- Main Road
- Local Road
- Unsealed Road
- Railway Line
- Existing Contours 1m Interval (Portal Submission ID: 11919)