



# Stratford Mining Complex Annual Biodiversity Report 2025

FOR THE YEAR ENDING 31 DECEMBER 2025

## CONTENTS

1	Introduction.....	3
1.1	Scope.....	3
2	Status of BMP Performance Criteria.....	3
3	Vegetation Clearance Protocol.....	5
3.1	Vegetation Clearance Report.....	5
3.2	Salvaged and Reused Material for Habitat Enhancement.....	5
4	Managing Access, Fencing, Gates and Signage.....	6
5	Revegetation Management.....	7
5.1	Seed Collection and Propagation.....	7
5.2	Revegetation and Regeneration.....	7
6	Weed Control and Monitoring.....	9
7	Feral Animal Control and Monitoring.....	10
8	Bushfire Prevention and Risk Management.....	11
9	Nest Box Programme.....	11
10	Squirrel Glider Management Plan.....	13
10.1	Definition of the Squirrel Glider Colonies.....	13
10.2	Squirrel Glider Home Ranges.....	14
10.3	Tree Hollow Census.....	14
11	Biodiversity Offset Monitoring and Reporting.....	15
11.1	Habitat and Vegetation Condition Monitoring.....	15
11.2	Fauna Monitoring.....	15
12	Long Term Security and Conservation Bond.....	17
12.1	Long-term Security.....	17
12.2	Conservation Bond.....	17
13	Commonwealth EPBC Approval Compliance Reports.....	17
14	Appendices.....	19

## LIST OF APPENDICES

- Appendix A:** Stratford Mining Complex – Biodiversity Management Plan 2023
- Appendix B:** Pre-Clearance Surveys – Roseville West 2025
- Appendix C:** Kleinfelder - Stratford Mining Complex 2025 Biodiversity Offsets Strategy Flora Monitoring Report
- Appendix D:** AMBS Ecology & Heritage – Feral Animal Study of the Stratford Mining Complex 2025
- Appendix E:** AMBS Ecology & Heritage – Stratford Offset and Biodiversity Enhancement Area Nest Box Monitoring 2025
- Appendix F:** AMBS Ecology & Heritage - Stratford Coal Mine: Fauna Surveys of the Offset, Biodiversity Enhancement and Rehabilitation Areas, Spring 2025

## 1. INTRODUCTION

The Stratford Mining Complex (**SMC**), located in the northern part of the Gloucester Basin NSW, is approximately 10 kilometres (km) south of Gloucester and is owned and operated by Stratford Coal Pty Ltd (**SCPL**), a fully owned subsidiary of Yancoal Australia Limited (**YAL**).

### 1.1 Scope

In accordance with the Stratford Extension Project (**SEP**) Development Consent SSD-4966, the proponent (SCPL) is required in accordance with *Schedule 2, Condition 39* to prepare and implement a Biodiversity Management Plan (**BMP**). This Plan must include:

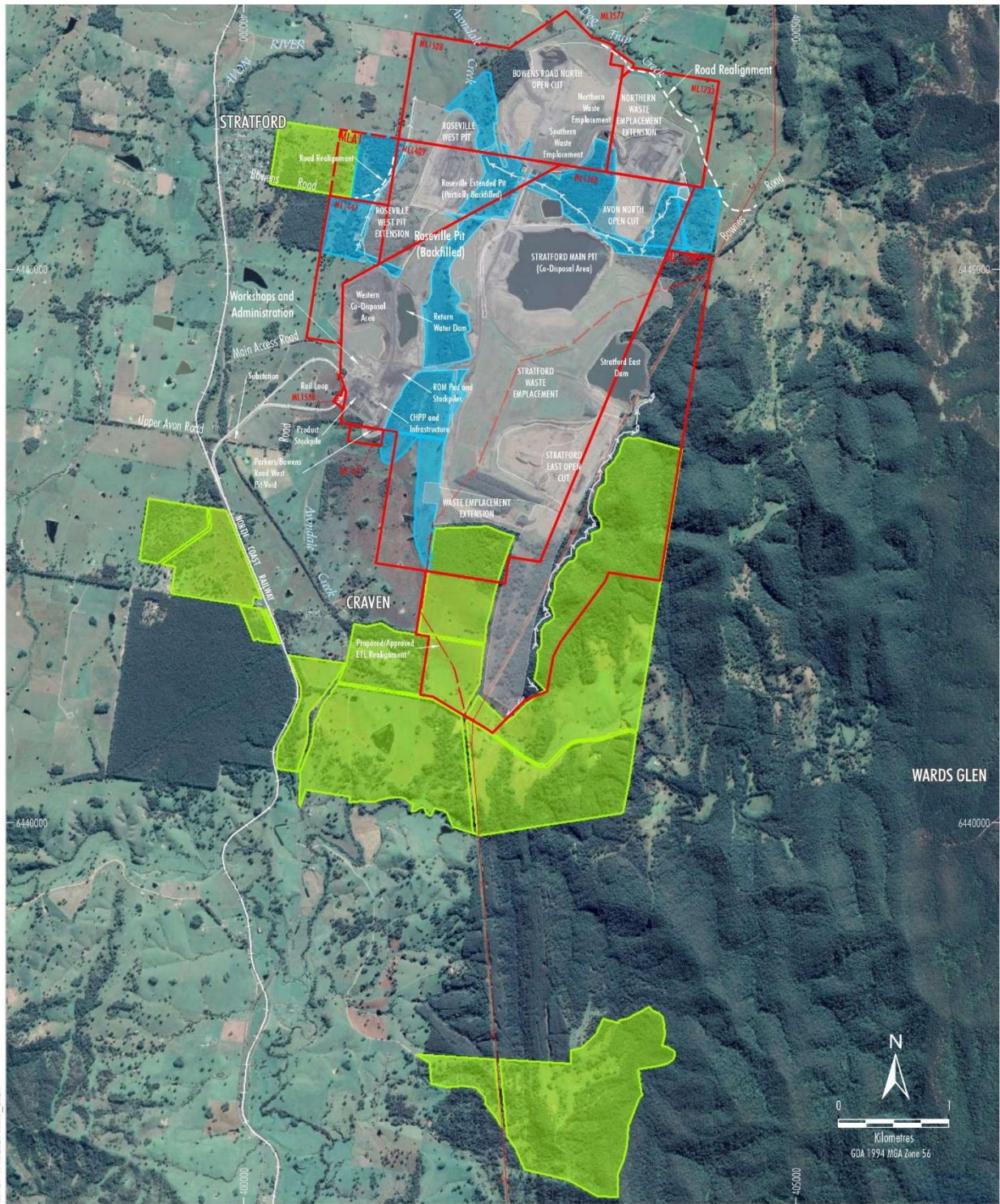
*“a program to monitor and report on the effectiveness of the measures in the Biodiversity Management Plan, and progress against the detailed performance and completion criteria”.*

The BMP was approved by the then Department of Planning and Environment (DPE) (now the Department of Planning, Housing and Infrastructure (DPHI)) on 24 February 2023. This SMC Annual Biodiversity Report provides a review of the effectiveness of measures in the BMP for the annual year ending 31 December 2025 in accordance with Section 8.2.1 of the BMP. The scope of the report includes the Mining Lease areas, the Biodiversity Offset Areas and the Biodiversity Enhancement Area as indicated on **Plan A**.

This report (and associated Appendices) is included as an Appendix of the SMC Annual Review which is available on the Stratford Coal website [www.stratfordcoal.com.au](http://www.stratfordcoal.com.au).

## 2. STATUS OF BMP PERFORMANCE CRITERIA

Performance criteria as prescribed in the BMP are presented in **Tables 1 to 9**. The performance criteria have been developed to meet the specific objectives for the areas described in Section 1.2 of the BMP. All performance criteria are linked to the management specifications listed in the BMP Section 4 and Section 5, and monitoring/reporting specifications in the BMP Section 7. The status of BMP performance criteria is provided in the subsequent sections of this report.



YAN-21-40-WP2021-BiOMP\_2024

- LEGEND**
- Mining Lease Boundary
  - Mining Lease Application Boundary\*
  - Electricity Transmission Line
  - Approximate Extent of Existing/Approved Surface Development
  - Conceptual Up-Catchment Diversion
  - Offset Area
  - Biodiversity Enhancement Area

\*MLA1 is a proposed future Mining Lease Application (MLA) area and has not yet been lodged.

† Not yet Constructed

Source: Orthophoto - GoogleEarth CNES/Airbus (2020); LPI (2016); NSW Department of Planning & Environment (2017)



**STRATFORD COAL**  
Part of the Yancoal Australia Group

**STRATFORD EXTENSION PROJECT**  
Biodiversity Offset Area and Biodiversity Enhancement Areas

**Figure 3**  
**Plan A – BMP Figure 3**

### 3. VEGETATION CLEARANCE PROTOCOL

#### 1.2 Vegetation Clearance Report

Vegetation clearance is undertaken in accordance with the BMP Section 4.1 Vegetation Clearance Protocol. Prior to any clearance operations being undertaken a Clearing Plan is prepared, and pre-clearance surveys are undertaken.

During the 2025 reporting period, approximately 4.7 hectares (ha) of vegetation was cleared at the SMC to assist with mine closure civil works. **Appendix B** contains the pre-clearance survey associated with the vegetation clearance and summarises the fauna observed and any habitat features that were salvaged, cleared or relocated in 2025.

Information obtained during vegetation clearance activities (i.e. habitat features, hollows cleared and fauna observed) has been used to determine the requirements for nest box replacement in the Biodiversity Offset Areas (refer to **Section 9**).

A summary of the habitat features and tree hollows cleared since the commencement of the SEP is included below:

- 2018 – six (6) habitat features including zero (0) tree hollows
- 2019 – forty-two (42) habitat features including nine (9) glider suitable tree hollows and five (5) other hollows
- 2020 H1 – thirty-three (33) habitat features including nineteen (19) glider suitable tree hollows and eleven (11) other hollows
- 2020 H2 – eighteen (18) habitat features including seven (7) glider suitable tree hollows and eleven (11) other hollows
- 2021 – four (4) habitat features all of which were suitable for gliders
- 2022 – Nil
- 2023 – Nil
- 2024 – Nil
- 2025 – fourteen (14) habitat features including one (1) glider suitable tree hollow and thirteen (13) other hollows

*\*Note tree hollows are included in the total habitat features reported above.*

#### 1.3 Salvaged and Reused Material for Habitat Enhancement

Section 4.1.4 of the BMP requires salvaged material from vegetation clearance activities to be used for habitat enhancement within the rehabilitation, Biodiversity Offset Areas and Biodiversity Enhancement Areas. Habitat features such as trunks, logs, large rocks, branches, stumps and roots are salvaged and relocated where practicable.

#### 4. MANAGING ACCESS, FENCING, GATES AND SIGNAGE

Managing access, fencing, gates and signage is undertaken in accordance with the BMP Section 5.1 and 5.2.

**Table 1: Fencing, Gate and Signage Performance and Completion Criteria**

Management Action	Performance Criteria		Completion Criteria
	Completed Activities to December 2020	Annually from December 2020 onwards PC Maintenance Phase	
Review of fencing requirements for offset areas.	Review of fencing complete including development of mapping showing fence and gate types, redundant fences and fences to be retained.	-	Fencing review complete.
Gate and fence installations.	Installation of gates and fences complete.	Monitoring of gates and fencing to exclude livestock. Where required, maintenance undertaken and documented.	Gate and fence installations complete. Livestock excluded. Monitoring and maintenance ongoing.
Redundant fence removal.	Redundant fences removed.	-	No redundant fencing.
Installation of signage.	Installation of signage complete.	Monitoring and maintenance of signs has been undertaken.	Signage installed.

**Table 2: Access Track Performance and Completion Criteria**

Management Action	Performance Criteria		Completion Criteria
	Completed Activities to December 2020	Annually from December 2020 onwards PC Maintenance Phase	
Operational review and mapping to facilitate site access for offset management activities.	Operational review developed. Mapping complete.	-	Operational review and mapping completed.
Access track enhancement and maintenance.	Enhancement of access tracks undertaken as identified in operational review.	Monitoring and maintenance of access tracks.	Access track enhancement complete (as per operational review).

Implementation of the BMP management measures continued in 2025. The BMP requires works to exclude livestock and control access to the Biodiversity Offset Areas and Biodiversity Enhancement Areas.

Following the initial 2018 review of existing fencing, gates and access tracks, redundant fencing was removed and new fencing installed where required. Access tracks necessary for the ongoing management of the Biodiversity Areas were also established and maintained.

During the reporting period, maintenance of existing fencing was undertaken as required. Access tracks and previously installed signage continued to be maintained. Signage installation was completed in 2018, with all key access points to the Biodiversity Areas identified and signposted. During the reporting period, no additional signage or gate locks were required to restrict access.

## 5. REVEGETATION MANAGEMENT

### 1.4 Seed Collection and Propagation

Seed collection and propagation is undertaken in accordance with the BMP Section 4.1.5 and 5.3.

**Table 3: Seed Collection and Propagation Performance and Completion Criteria**

Management Action	Performance Criteria		Completion Criteria
	Completed Activities to December 2020	Annually from December 2020 onwards PC Maintenance Phase	
Develop seed collection species list	Species list developed.	Continued development of the species list as required.	Species list developed.
Seed collection	Seed collection commenced.	Continued seed collection as required.	Seed collection completed.
Seed propagation	Seed propagation commenced.	Continued seed propagation as required.	Seed propagation completed.

Revegetation in the BMP Revegetation Areas (BMP Management Zone A) will continue, as required, through a combination of direct seeding and tube-stock planting. Local endemic species are preferentially used where seed supply is available, however consideration will be given to the use of a high quality seed sourced further from the site. An indicative species list for BMP Management Zone A is provided in Appendix A of the BMP.

In preparation for revegetation works, a scope and schedule are developed as required to guide implementation (further discussed in **Section 5.2**). The total volume of seed required is calculated based on the floral listings for the target communities in the BMP appendices.

Gloucester Worimi First Peoples Aboriginal Corporation, Hunter Indigenous Plants and Kleinfelder have been engaged to assist with the propagation of native plant species, with tube-stock grown under controlled nursery conditions and delivered to site as required for the revegetation program.

### 1.5 Revegetation and Regeneration

Revegetation management is undertaken in accordance with the BMP Section 5.3 (Revegetation Programme). The aim of revegetation is to establish a range of habitat niches, including native canopy and understorey species. Management Zone A in the Biodiversity Areas will be revegetated to substantially increase the extent of native vegetation and maximise habitat diversity across a range of successional stages.

**Table 4: Revegetation and Regeneration Performance and Completion Criteria**

Management Action	Performance Criteria		Completion Criteria
	Completed Activities to December 2020	Annually from December 2020 onwards PC Maintenance Phase	
Site Planning	Site inspection complete and advice received.	-	Site inspection complete and advice received.
Map Revegetation Areas (Management Zone A) and identify target vegetation communities to establish	Mapping complete and target vegetation communities identified.	-	Mapping complete and target vegetation communities identified.
Develop a species list for each target vegetation community	Species list developed.	-	Species list developed.
Develop application rates for seeds as well as planting densities for tube stock	Application rates developed.	-	Application rates developed.
Implement revegetation schedule	Revegetation schedule developed and implementation commenced.	Continue implementation of revegetation schedule.	Revegetation schedule complete.
Revegetation Area (Management Zone A)	Commencement and continuation of revegetation works within the Revegetation Area (Management Zone A).	Continue revegetation works within the Revegetation Area (Management Zone A). Monitoring and maintenance (as required) of revegetation works.	Vegetation established and provides suitable habitat for use by native fauna species.
Squirrel Glider Vegetation Pathways (Management Zone A1)	Commenced planting of flora species which provide habitat for the Squirrel Glider within designated revegetation zones.	Continue plantings of flora species which provide habitat for the Squirrel Glider.	Squirrel Glider vegetation pathways planted and provide connective habitat for the Squirrel Glider.
<i>Allocasuarina</i> spp. Plantings (Management Zone A2)	Planting of <i>Allocasuarina</i> spp. within designated revegetation zones complete	Monitoring and maintenance (as required) of <i>Allocasuarina</i> spp. plantings within Offset Area 3.	<i>Allocasuarina</i> spp. planted and provide foraging habitat for the Glossy Black-cockatoo.
Coastal Floodplain Forest Revegetation (Management Zone A3)	Re-establishment of flora species characteristic of the Cabbage Gum open forest vegetation community.	Monitoring and maintenance (as required) of flora species characteristic of the Cabbage Gum open forest vegetation community.	Improvement in condition of the riparian habitat along Avondale Creek as evidenced by monitoring data.
Existing Remnant Vegetation (Management Zone B)	Annual inspections undertaken to monitor regeneration.	Annual inspections to monitor regeneration.	Remnant vegetation enhanced and protected.
Power Line Corridor (Management Zone C)*	-	-	-

\* The management of the Power Line Corridor (Management Zone C) is the responsibility of Transgrid (not SCPL).

### Site Planning & Schedule

During the second half of 2022, a three-year scope and schedule was prepared for the revegetation works to be implemented 2023 – 2026. Kleinfelder have been engaged to assist with both site planning and implementation of the revegetation works. The site planning included:

- Mapping of the priority revegetation areas and vegetation communities to be completed in 2023 – 2026; and
- Calculation of seed and tube-stock requirements based on the indicative lists of flora species in the BMP Appendices.

## Revegetation Implementation

The most recent round of tube-stock planting was completed in May 2023, finalising the Autumn 2022 revegetation program. This program was significantly disrupted by above-average rainfall experienced in late 2021 and throughout much of 2022. A total of 14,950 plants were installed across the planting areas, comprising 6,940 canopy stems (12 species) and 8,010 midstorey and shrub stems (17 species) across two vegetation communities.

No additional large-scale tube-stock planting was undertaken during the current reporting period. Future planting will be informed by monitoring of vegetation density.

## Monitoring

Vegetation monitoring commenced in 2019 to assess the effectiveness of revegetation within Management Zone A and natural regeneration within the Existing Remnant Vegetation Area (Management Zone B). Data collected in 2019 provides the baseline against which revegetation performance is assessed.

Vegetation monitoring was undertaken in April 2025, with the full report provided in **Appendix C** (*Stratford Mining Complex 2025 Biodiversity Offsets Strategy Flora Monitoring Report*). Habitat and vegetation condition monitoring will continue in accordance with the Biodiversity Management Plan to assess vegetation condition and inform ongoing management.

## 6. WEED CONTROL AND MONITORING

Weed control is undertaken in accordance with the BMP Section 4.4 and Section 5.6. The weed control program aims to manage weeds to minimise their impact on native flora and fauna.

**Table 5: Weed Management Performance and Completion Criteria**

Management Action	Performance Criteria		Completion Criteria
	Completed Activities to December 2020	Annually from December 2020 onwards PC Maintenance Phase	
Monitoring of weed location and density	Mapping of weed extent and density produced.	-	Mapping of weed extent and density produced.
Bi-annual weed inspections and recording	Inspections and records completed.	Ongoing bi-annual inspections undertaken and records completed.	Inspections complete.
Weed control/treatment program	Strategic weed control as required, recording on areas worked and implementation of recommendations.	Strategic weed control as required, recording on areas worked and implementation of recommendations.	Priority weed infestations appropriately controlled and minimised as evidenced through monitoring data.

The general procedure for controlling weed involves:

- Monitoring to identify locations and densities of Priority Weeds;
- Identification of suitable control measures;
- Implementation of the selected control measure by a suitable qualified person; and
- Follow-up inspections to evaluate effectiveness of weed control.

Weed spraying activities are generally undertaken between the months of September and April each year. Physical management measures such as mechanical removal, slashing and/or back-burning can be undertaken at other times of the year as required.

Two contracting companies are engaged at the SMC to undertake weed management activities on an ongoing basis. Weed management during Summer 2024/25 was continued through to Autumn; however, above-average rainfall during the first half of 2025 limited site access and reduced available spraying windows, delaying programmed works. The Summer 2025/26 weed spraying programme recommenced in September 2025 and will continue through Autumn 2026. The weed control activities in 2025 continued to target areas of known weed infestation. The key species targeted included Blackberry, Lantana, Privet, Wild Tobacco, Giant Parramatta Grass and control of the Cadagi Tree.

Weeds monitoring to evaluate the effectiveness of control measures is undertaken in conjunction with the annual vegetation monitoring and is documented in **Appendix C** (*Stratford Mining Complex 2025 Biodiversity Offsets Strategy Flora Monitoring Report*).

## 7. FERAL ANIMAL CONTROL AND MONITORING

Feral animal control is undertaken in accordance with the BMP Section 4.5 and Section 5.7. The objective of the feral animal control program is to manage feral animals to minimise their impact on native flora and fauna in the Biodiversity Offset and Biodiversity Enhancement Areas and/or their impact on agricultural production in other surrounding areas.

**Table 6: Feral Animal Management Performance and Completion Criteria**

Management Action	Performance Criteria		Completion Criteria
	Completed Activities to December 2020	Annually from December 2020 onwards PC Maintenance Phase	
Abundance of feral animal species established	Initial study undertaken in the Biodiversity Offset Area and Biodiversity Enhancement Area.	-	Initial feral animal study completed.
Feral animal control and monitoring	Inspections and records completed.	Ongoing inspections undertaken and recording on areas worked.	Feral animal monitoring reports and records prepared.
Feral animal control program	Feral animal control implemented as required.	Ongoing feral animal control implemented as required.	Feral animal numbers within offset areas minimised as evidenced through monitoring data.

AMBS was commissioned to undertake the initial invasive animal survey in 2017, in accordance with Section 5.7 of the BMP. The study aimed to determine the range and abundance of invasive species occurring, or likely to occur, within the Stratford Mining Lease and Biodiversity Areas, and to provide recommendations for control.

MDP Vertebrate Pest Management has been engaged by SCPL since 2016 to implement wild dog and fox control programs across SCPL-owned land, including the Stratford and Duralie Mining Leases and associated Biodiversity Offset Areas.

During 2025, a feral animal control program was undertaken at the SMC targeting wild dogs, foxes and feral cats. The program was successful, with 7 wild dogs, 5 foxes and 1 feral cat trapped. The previous control program was conducted between 28 August and 26 September 2023. The next feral animal control program is scheduled for 2026.

In accordance with Section 5.7 of the BMP, follow-up feral animal monitoring surveys are to be undertaken every two years. A feral animal survey of the Biodiversity Offset Areas and Biodiversity Enhancement Areas was completed in 2025 to assess the effectiveness of control programs and inform priorities for ongoing management. The Feral Animal Study of the Stratford Mining Complex (AMBS, 2025) is included as **Appendix D**.

## 8. BUSHFIRE PREVENTION AND RISK MANAGEMENT

Bushfire management is undertaken in accordance with the BMP Section 4.7 and Section 5.9. The objective of bushfire management in the Biodiversity Areas is to prevent impacts from unplanned bushfire and to use fire to promote biodiversity.

**Table 7: Bushfire Management Performance and Completion Criteria**

Management Action	Performance Criteria		Completion Criteria
	Completed Activities to December 2020	Annually from December 2020 onwards PC Maintenance Phase	
Mapping of Fire Breaks and Trails	Mapping complete.	-	Mapping complete.
Monitoring of Fuel Loads	Inspections and records completed.	Ongoing inspections undertaken and recording on areas worked.	Monitoring reports prepared.
Bushfire Management Activities including Controlled Burning	Fire management activities have been implemented (if required).	Fire management activities have been implemented (if required).	Regular bushfire management measures in place.

Monitoring of fuel loads to evaluate bushfire risk and guide bushfire hazard reduction activities is undertaken in conjunction with the annual vegetation monitoring and was conducted in April 2025. Further detail is included in **Section 11** and **Appendix C** (*Stratford Mining Complex 2025 Biodiversity Offsets Strategy Flora Monitoring Report*).

Bushfire risk has continued to be mitigated through the installation and maintenance of new access tracks and fire breaks within the Biodiversity Offset Areas. No hazard reduction burning has been undertaken in 2025. Following the revegetation works, the aim is to exclude fire from the offset areas for at least 5 years to allow for tubestock and seedlings to establish.

Section 4.7 of the BMP states SCPL will:

- Ensure that the development is suitably equipped to respond to any fires on site; and
- Assist the Rural Fire Service (RFS), emergency services and National Parks and Wildlife Service as much as possible if there is a fire in the surrounding area.

## 9. NEST BOX PROGRAMME

Nest box management is undertaken in accordance with the BMP Section 5.10. Nest boxes will be installed to provide habitat opportunities in the short to medium-term for a number of arboreal fauna species including the Squirrel Glider.

**Table 8: Nest Box Program Performance and Completion Criteria**

Management Action	Performance Criteria		Completion Criteria
	Completed Activities to December 2020	Annually from December 2020 onwards PC Maintenance Phase	
Nest Boxes – Installation	Next boxes installed for squirrel glider and other species based on ratios of cleared hollows recorded from clearing activities.	Continued nest box installation as clearing progresses.	Nest boxes installed as required to replace cleared hollows.
Nest Boxes – Monitoring and Reporting	Quarterly inspections undertaken in Year 1 (2018). Annual inspections undertaken and records completed in Years 2 (2019) and 3 (2020).	Ongoing annual monitoring inspections and records completed.	Nest box monitoring completed and report prepared.
Nest Boxes – Maintenance	Maintenance or replacement as required.	Maintenance or replacement as required.	Nest boxes functioning as designed.

## Implementation & Installation

The nest box programme described in the BMP Section 5.10, consists of two main components to replace any tree hollows cleared prior to mining activities as described in **Section 3** of this report:

- Suitable nest boxes for the Squirrel Glider will be installed at a ratio of at least 3:1 for each tree hollow cleared suitable for the Squirrel Glider. Squirrel Glider nest boxes will have a small entrance hole (45-50 millimetres diameter) to exclude larger possums and birds.
- For tree hollows that provide habitat to arboreal fauna species (other than the Squirrel Glider), nest boxes will be installed at a minimum ratio of 1:1 (i.e. one nest box of appropriate size to replace one hollow of similar size and properties). These nest boxes will be provided for birds, bats and arboreal mammals.

Nest boxes will be installed within the Biodiversity Offset Area and Biodiversity Enhancement Area in Existing Remnant Vegetation (Management Zone B) as well as the Revegetation Area (Management Zone A).

A summary of all cleared habitat features and tree hollows, including glider-suitable hollows, is provided in **Section 3.1**.

The current nest box program has a total of 202 boxes and involves:

- Five (5) nest boxes targeting Squirrel Glider (*Petaurus norfolcensis*), installed December 2018
- Twenty-Five (25) nest boxes targeting Squirrel Glider (*Petaurus norfolcensis*), installed May 2019
- Fifty-four (54) nest boxes targeting Squirrel Glider (*Petaurus norfolcensis*) and Sixteen (16) nest boxes targeting a variety of hollow-dependent fauna, installed April 2020
- Eighty-four (84) nest boxes targeting Squirrel Glider (*Petaurus norfolcensis*) and eighteen (18) nest boxes targeting a variety of hollow-dependent fauna, installed February and March 2021

## Monitoring

In accordance with Section 5.10 of the BMP, nest boxes are monitored by suitably qualified personnel, with quarterly inspections during the first year following installation and annual inspections thereafter in Spring. Monitoring may be reduced to a biennial frequency following a review of monitoring results.

Monitoring reports record the nest box identification number, host tree species, evidence of use and fauna presence. Species data is collected where applicable (sex, weight, length, breeding status and capture history). The most recent full monitoring round was completed in 2024.

During the reporting period, AMBS undertook a review of the SMC Nest Box Program. The review found that since commencement in 2019, 99% of nest boxes within the SMC Offset Areas have been occupied or have shown signs of occupancy. In response to the consistently high occupancy rates, monitoring frequency has been reduced to a biennial program, with annual maintenance inspections continuing to ensure ongoing functionality and habitat value of installed nest boxes. The 2025 nest box maintenance report can be found in **Appendix E** (*AMBS Ecology & Heritage – Stratford Offset and Biodiversity Enhancement Area Nest Box Monitoring 2025*).

## 10. SQUIRREL GLIDER MANAGEMENT PLAN

In accordance with *Schedule 3, Condition 38(a)* of the Development Consent SSD-4966 the management of Squirrel Glider populations is undertaken in accordance with the Squirrel Glider Management Plan (SQMP). The SQMP was approved by the DPE on 19 October 2018 and includes specific management measures in addition to those in the BMP.

The SGMP has been prepared to facilitate the management of squirrel glider populations at the SMC, Biodiversity Enhancement Areas and Biodiversity Offset Areas.

Squirrel Glider management programs which have been commenced include:

- Definition of the Squirrel Glider colonies (SQMP Section 4.1)
- Identification of the Squirrel Glider colony home ranges (SQMP 4.2)
- Tree hollow census within the home ranges (SQMP Section 7.1)
- Nest box program (SQMP Section 7.2), in conjunction with BMP nest box program in Section 9
- Squirrel Glider vegetation pathways (SQMP Section 8.1), in conjunction with BMP revegetation in Section 5
- Squirrel Glider population monitoring (SQMP Section 10.1), in conjunction with BMP fauna monitoring in Section 11.2.

### 1.6 Definition of the Squirrel Glider Colonies

Kleinfelder was engaged to undertake an initial targeted Squirrel Glider survey to confirm the location of Squirrel Glider colonies within the potential habitat in the vicinity of the SMC Biodiversity Areas, including the previously identified Squirrel Glider colonies and any new colonies which have been established within the areas identified as potential habitat. The surveys will ensure that future monitoring requirements of the SQMP are being implemented at locations of known colony locations.

The initial surveys were undertaken during November to December 2018 and the results are provided in the *Initial Squirrel Glider survey as part of Stratford Coal's Squirrel Glider Management Plan (Kleinfelder, 2018)*. Squirrel Gliders were identified at five locations out of the 37 locations surveyed. These locations provided the basis for ongoing survey efforts.



**Plate 1** – Squirrel Glider (*Petaurus norfolcensis*) photographed during initial camera trap surveys

## 1.7 Squirrel Glider Home Ranges

Objectives outlined in Section 4 of the SGMP require measures to establish the home range size of known squirrel glider colonies near the SMC. This information will be used to guide the ongoing management of squirrel glider populations within the SMC Biodiversity Offset Areas and Biodiversity Enhancement Areas. This information will also define the study area for further programs including the census of suitable tree hollows, food resources surveys and habitat enhancement including nest box installations.

Kleinfelder was commissioned by SCPL to conduct a radio tracking program to determine the Squirrel Glider home ranges of the local population based on the colony locations identified in the initial survey.

Two radio tracking programs were conducted between January to April 2019 and July to September 2019 (during the 2019 reporting period). The 2019 radio tracking programs consisted of trapping of Squirrel Gliders, followed by processing and collaring. Generally, two gliders from each colony area were targeted for radio tracking. Radio tracking of the selected gliders was then conducted, followed by analysis of the data and estimating home ranges for each radio-tracked Squirrel Glider. The findings of the initial survey, radio tracking and home range estimations are provided in previous versions of the SMC Annual Biodiversity Report.



Plate 2 - Radio-transmitting collar fitted to Squirrel Glider



Plate 3 - Squirrel Glider (Sharon) with young

## 1.8 Tree Hollow Census

*Schedule 3, Condition 38(b)* of Development Consent SSD-4966 requires a census of suitable tree hollows in home ranges and offset areas suitable for Squirrel Gliders. A tree hollow census was undertaken within the home ranges identified by the radio tracking program (**Section 10.2**) to identify hollow bearing trees suitable for use as den sites by the Squirrel Glider. The results of the tree hollow census are provided in previous SMC Annual Biodiversity Reports.

## 11. BIODIVERSITY OFFSET MONITORING AND REPORTING

The Biodiversity Offset monitoring program is prescribed in the BMP Section 7. The program aims to monitor and report on the effectiveness of the BMP management measures and progress against the detailed performance and completion criteria.

**Table 9: Monitoring Program – Biodiversity Offset Strategy**

Monitoring Program	Relevant BMP Section	Frequency
Visual Monitoring	Section 7.1.1	Annual
Photo Monitoring	Section 7.1.2	Annually (spring)
Habitat and Vegetation Monitoring Program	Section 7.1.3	Annually (spring)
Fauna Monitoring Program	Section 7.1.4	Every three years
Weed Monitoring	Section 5.6	Biannually
Initial Feral Animal Study of the Biodiversity Offset Area and Biodiversity Enhancement Area	Section 5.7	Within 12 months of approval of the BMP
Feral Animal Monitoring	Section 5.7	Every two years (biannually)
Nest Box Monitoring	Section 5.10	Quarterly for 12 months and then biannually

### 1.9 Habitat and Vegetation Condition Monitoring

Habitat and vegetation condition monitoring is undertaken to quantitatively measure the change in habitat and vegetation condition over time. Visual monitoring and photo monitoring programs are undertaken concurrently with the vegetation monitoring to provide additional information on the change of the Biodiversity Areas over time and inform maintenance requirements.

Vegetation Monitoring commenced in 2019 to assess the effectiveness of revegetation in the Revegetation Area (Management Zone A) and to assess the natural regeneration in the Existing Remnant Vegetation Area (Management Zone B). The data gathered in 2019 serves as a baseline to assess the success of the revegetation efforts and progress against the project specific performance and completion criteria. This survey was undertaken prior to the revegetation works commencing in the Biodiversity Offset areas.

Vegetation monitoring was undertaken again in April 2025. The full report is included in **Appendix C** (*Stratford Mining Complex 2025 Biodiversity Offsets Strategy Flora Monitoring Report*) Habitat and vegetation condition monitoring will continue to be undertaken annually to quantitatively measure the change in habitat and vegetation condition over time and to inform any ongoing maintenance requirements. Survey results from the 2025 monitoring state that the revegetation program is progressing well with all areas where installation has occurred having some success and well over half the areas achieving or exceeding target densities.

#### 1.10 Fauna Monitoring

Monitoring of fauna usage within the Biodiversity Offset Areas, Biodiversity Enhancement Areas and Rehabilitation Areas is undertaken every three years to document fauna responses to improvements in vegetation structure and habitat condition, and to assess the performance of these areas in providing habitat for a range of vertebrate fauna. Surveys include an assessment of habitat complexity, species richness and species abundance.

During 2025, AMBS Ecology & Heritage (AMBS) was engaged to undertake fauna surveys within the SMC Biodiversity Offset Areas, Biodiversity Enhancement Areas and Stratford Rehabilitation Areas.

The full report is included in **Appendix F** (*Stratford Coal Mine: Fauna Surveys of the Offset, Biodiversity Enhancement and Rehabilitation Areas, Spring 2025*). A summary of the survey results is provided below.

Targeted fauna surveys were undertaken at six sites within the Stratford Offset Areas, two sites within the Stratford Biodiversity Enhancement Area, and two sites within the Stratford Rehabilitation Area between 20 and 25 October 2025 and 17 and 22 November 2025. Survey techniques included pitfall traps, funnel traps, Elliott A traps, harp traps, ultrasonic bat call recording, spotlighting, diurnal bird surveys and reptile searches. Frog surveys were undertaken at four separate sites. Opportunistic observations of fauna and fauna signs were also recorded throughout the field survey period, including during travel between survey sites.

A total of 158 vertebrate species were recorded, comprising 14 frogs, 15 reptiles, 86 birds and 43 mammals, the majority of which were native (refer to the species list provided in Appendix A of **Appendix F**).

The fauna surveys indicate that the Stratford Offset, Biodiversity Enhancement and Rehabilitation Areas provide foraging resources for a range of native vertebrate fauna, including birds, mammals, reptiles and frogs. This includes at least 16 species listed as threatened or migratory under the *Biodiversity Conservation Act 2016 (BC Act)* and/or the *Environment Protection and Biodiversity Conservation Act 1999 (EPBC Act)*.

Notable survey results included:

- Koala recorded at three sites within the Offset Areas and at one frog survey site. A considerable number of vocalisations were recorded during the relatively short survey period;
- Squirrel Glider recorded at three locations, including two sites within the Offset Areas and one site within the Biodiversity Enhancement Area;
- Moritz's Leaf-tailed Gecko recorded at two sites within the Offset Areas, having previously only been recorded once at the SMC; and
- Southern Myotis captured in a harp trap positioned on the Wards River, which contained water during the current surveys. One individual was captured at the same location in 2019 and 2022.

The fauna surveys confirm that the Stratford Offset, Biodiversity Enhancement and Rehabilitation areas provide foraging and breeding habitat for a range of native vertebrate fauna, including birds, mammals, reptiles, and frogs.



**Plate 4** - Koala (*Phascolarctos cinereus*)



**Plate 5** – Squirrel Glider (*Petaurus norfolcensis*)

## 12. LONG TERM SECURITY AND CONSERVATION BOND

### 1.11 Long-term Security

In accordance with *Schedule 3, Condition 36* of Development Consent SSD-4966, SCPL is required to make suitable arrangements for the long-term security of the SEP Biodiversity Offset Area. SCPL has pursued the mechanisms available under Section 88E(3) of the NSW *Conveyancing Act, 1919* (CV Act) namely:

- Registration of a Positive Covenant under Section 88E(3) of the CV Act; and
- Registration of a Restriction on the Use of Land by a Prescribed Authority under Section 88E(3) of the CV Act.

To finalise securing the offset areas, the following actions were conducted:

- Confirmation that the completed instruments are to the satisfaction of the Secretary completed 15 April 2019;
- Execution of the instruments by the prescribed authority (the DPE);
- Execution of the instruments by the three separate registered proprietors of the offset lands (i.e. Yancoal's subsidiary companies, CIM Stratford Pty Ltd; Stratford Coal Pty Ltd and Gloucester Coal Limited);
- Lodgement of the executed instruments with NSW Land Registry Services (LRS) in accordance with LRS's dealing lodgement requirements;
- LRS assessment/review of the instruments to confirm the instruments are acceptable for registration; and
- Registration of the instruments on the titles of the offset lands.

Public Positive Covenants and Restrictions on the Use of Land for the Biodiversity Offsets have been registered on title with NSW Land and Property Information (LPI) in October 2019. Copies of the executed Positive Covenants and notice of registration of the instruments was included in the 2019 SMC Annual Biodiversity Report.

### 1.12 Conservation Bond

In accordance with *Schedule 3, Condition 40* of Development Consent SSD-4966, SCPL is required to lodge a Conservation Bond with the DPE which covers the cost of implementing the Biodiversity Offset Strategy detailed in the BMP.

The conservation bond calculation was prepared by Kleinfelder and a verification of the costs was undertaken by Rider Levett Bucknall. The conservation bond calculation was submitted in January 2019 and subsequently approved by DPE on 15 January 2019.

The Conservation Bond in the form of a bank guarantee was executed and lodged with DPE on 8 February 2019.

## 13. COMMONWEALTH EPBC APPROVAL COMPLIANCE REPORTS

In accordance with *Condition 10* of EPBC 2011/6176 for the SEP, by 31 March of each year after the commencement of the action, or as agreed with the Department of the Environment and Energy (DoEE) (now the Department of Climate Change, Energy, the Environment and Water (DCCEE)), SCPL is required to publish a report addressing compliance with the conditions of EPBC 2011/6176 during the previous calendar year, including implementation of any management documents as specified in the conditions of EPBC 2011/6176.

SCPL commenced the action approved under EPBC 2011/6176 on 4 April 2018. The first annual compliance report was submitted in March 2019. The *Stratford Extension Project (EPBC 2011/6176) Annual Compliance Report 2024*, was submitted to the DCCEE on 28 March 2025.

*Condition 10* also requires reporting on the implementation of the relevant management documents required in accordance with the conditions of EPBC 2011/6176. This SMC Annual Biodiversity Report provides a review of the implementation of the management measures in the BMP for the annual year ending 31 December 2025. This report is intended to be included as an Appendix of the SMC Annual Review.

## 14. APPENDICES

- Appendix A:** Stratford Mining Complex – Biodiversity Management Plan 2023
- Appendix B:** Pre-Clearance Surveys – Roseville West 2025
- Appendix C:** Kleinfelder - Stratford Mining Complex 2025 Biodiversity Offsets Strategy Flora Monitoring Report
- Appendix D:** AMBS Ecology & Heritage – Feral Animal Study of the Stratford Mining Complex 2025
- Appendix E:** AMBS Ecology & Heritage – Stratford Offset and Biodiversity Enhancement Area Nest Box Monitoring 2025
- Appendix F:** AMBS Ecology & Heritage - Stratford Coal Mine: Fauna Surveys of the Offset, Biodiversity Enhancement and Rehabilitation Areas, Spring 2025

(Appendices available on request)