



Warkworth Mining Limited

EPBC 2002/629 and EPBC 2009/5081

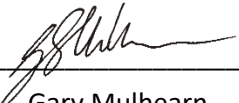
Annual Compliance Report 1 February 2025 to 31 January 2026

Date of Submission: 1 May 2026

Declaration of accuracy

In making this declaration, I am aware that sections 490 and 491 of the Environment Protection and Biodiversity Conservation Act 1999 (Cth) (EPBC Act) make it an offence in certain circumstances to knowingly provide false or misleading information or documents.

I declare that all the information presented in this compliance report is technically accurate.

Signed  _____
 Full name Gary Mulhearn
 Position Manager Environment and Community
 Organisation Warkworth Mining Limited (ABN 42 001 385 842)
 Date 1 May 2026

Document Title	Version	Date effective	Comment
Annual Compliance Report (EPBC2002/629 and EPBC2009/5081)	1	1 May 2026	Submitted to DCCEEW

Contents page

1.	Introduction	1
1.1	Objective	1
1.2	Background	1
2.	Condition Compliance	3
2.1	EPBC 2002/629	3
2.2	EPBC 2009/5081	9
3.	New environmental risks and potential threats to Matters of National and State Environmental Significance	22

List of Attachments

ATTACHMENT A: Regional Offset Management Plan Annual Report 2025

ATTACHMENT B: Local Offset Management Plan Annual Report 2025

ATTACHMENT C: EPBC 2009/5081 Compliance Register (Condition 17)

1. Introduction

1.1 Objective

This annual Compliance Report has been prepared generally in accordance with the *Annual Compliance Report Guidelines* (Commonwealth of Australia 2023) to satisfy Condition 4 of the EPBC 2002/629 Approval and Condition 15 of the EPBC 2009/5081 Approval, for the period 1 February 2025 to 31 January 2026 (reporting period). Both Approvals are held by Warkworth Mining Limited (WML) which is operated by Coal & Allied (NSW) Pty Ltd, a wholly owned subsidiary of Yancoal Australia Limited (YAL).

1.2 Background

WML holds development consent SSD-6464 to construct and operate an open cut coal mine, located approximately 15 kilometres southwest of Singleton in the Hunter Valley, NSW. The Commonwealth Minister for the Environment, under provisions of the *Environment Protection and Biodiversity Conservation Act 1999* (EPBC Act), issued two approvals to WML to construct, operate and extend the open cut coal mine, the first in February 2004 (EPBC 2002/629) and the second in August 2012 (EPBC 2009/5081).

The EPBC 2002/629 approval (as varied) requires WML to offset the impact upon Matters of National Environmental Significance (MNES) by protecting and managing no less than 1,586 hectares (ha) of habitat for the Regent Honeyeater (*Anthochaera phrygia*) and Swift Parrot (*Lathamus discolor*).

The EPBC 2009/5081 approval (as varied) requires WML to offset the MNES by protecting and managing a total of no less than 2,626 ha, of habitat for the Regent Honeyeater (*Anthochaera phrygia*) and Swift Parrot (*Lathamus discolor*). There are also conditions relating to water management and rehabilitation on the mine site.

The Offset Areas for each of the EPBC approvals are presented in **Table 1**.

Table 1 Location and size of the EPBC Offset Areas

Locality	Biodiversity Area	Offset Area (ha)	EPBC2002/629	EPBC2009/5081 Phase 1	EPBC2009/5081 Phase 2
Local	Southern (Putty Road Offset Area)	94		94	
	Southern	892			892
	Southern Total	986		94	892
	Northern	341			341
Regional	North Rothbury	41			41
	Goulburn River	1,066	1,066		
	Bowditch	520	520		
	Bowditch	82			82
	Putty	383			383
	Seven Oaks	519			519
	Condon View	345			345
Total		4,282	1,586	94	2,602

2. Condition Compliance

2.1 EPBC 2002/629

EPBC2002/629 Condition Number	Condition	Compliance status	Evidence/Comments (Goulburn River BA, Bowditch BA)
1	<p>By no later than 31 July 2020, the person taking action must register the Biodiversity Management Areas identified in the map at Attachment A under a legally secured offset mechanism. The mechanism must provide enduring protection of no less than</p> <p>a) 1,586 ha of suitable habitat for <i>Anthochaera phrygia</i> (regent honeyeater) and <i>Lathamus discolor</i> (swift parrot).</p> <p>Evidence of registration must be provided to the Department within 30 days of registration of the legally binding covenant.</p>	Pending	<p>A request was sent to the Department of the Environment and Energy (DoEE) on 7 December 2017 to extend the due date for a legally binding conservation covenant over the biodiversity areas beyond 17 February 2018. The request was sought on the basis of aligning the timeframe with the NSW Project Approval SSD 6464. DoEE advised by email on 28 February 2018, that given the request was submitted well in advance of 17 February 2018, that no non-compliance would be recorded. After additional consultation and correspondence with DoEE and the NSW Office of Environment and Heritage (OEH), further information was sent to DoEE on 11 September 2018 which noted that WML has been working with the OEH to secure the offsets as Biodiversity Stewardship Agreement (BSA's) pursuant to the Biodiversity Conservation Act 2016. As this Act commenced in August 2017, many of the systems, processes and transitional arrangements were being developed by OEH and the newly created Biodiversity Conservation Trust (BCT). WML had consulted with OEH and developed a timeline to step through the process to register the BSA's, and an extension request was sent to DoEE based on the proposed timeline.</p> <p>Approval from DoEE was received on 14/10/2018, with reference to the 7 December 2017 extension request, for the variation to condition 1 to extend the timeframe by which legally binding covenants must be registered over the offset sites to 31 July 2020.</p> <p>Due to ongoing difficulties in reaching agreement with the NSW Biodiversity and Conservation Division (BCD) on whether the proposed offsets properties meet the species and ecosystem credit retirement requirements of the MTW State Approvals a further extension was sought. MTW sent a letter (dated 24 July 2020) to Department of Agriculture, Water and the Environment (DAWE) requesting an extension of the timeframe to secure the offset areas until 31 July 2021. DAWE responded on 3 August 2020 acknowledging that MTW had contacted DAWE to remedy the potential breach of conditions of approval and that due to the high volume of approval requests it would take some time to respond to this request. DAWE responded to MTW on 7 October 2020 that the proposed timeframe for completion of the legally binding conservation mechanism process was too short and recommended that MTW review the schedule for completion.</p>

**EPBC2002/629 Condition
Condition
Number**

Compliance status Evidence/Comments (Goulburn River BA, Bowditch BA)

MTW submitted an administrative modification to NSW development consent SSD-6464 on 29 April 2021 to clarify biodiversity offset requirements for the Warkworth Continuation Project and to facilitate in-perpetuity conservation of biodiversity offset land. The Department of Planning and Environment (DPE) requested additional information on 9 August 2021 and further information on 11 October 2021 (MTW provided responses to these requests on 2 September 2021 and 20 December 2021, respectively).

On 11 October 2021 an updated variation request was submitted to DAWE providing background and justification for WML's request, including notification of the modification application submitted to NSW Department of Planning, Infrastructure and Environment on 29 April 2021 to modify the Warkworth Continuation Project to clarify offset requirements and to facilitate in-perpetuity conservation of biodiversity offset land. The variation request sought an extension to 31 July 2023, and advised WML will continue to manage the offset areas for conservation management consistent with its approved offset management plans regardless of these delays to formal security.

Subsequently, Department of Planning, Housing and Infrastructure (DPHI) in consultation with Biodiversity, Conservation and Science (BCS) advised MTW that a BSA is the only mechanism acceptable to the NSW Government for in-perpetuity security of biodiversity offset land. The establishment of a BSA requires biodiversity offset credits to be retired. Biodiversity offset credits for the MTW offset land were determined under prior mechanisms and need to be converted to current Biodiversity Assessment Method (BAM) credits. During 2025, MTW continued working with Conservation Programs, Heritage and Regulation (CPHR) Division (formerly BCS) and DPHI to progress BSAs for the offset land areas. WML has progressed a single BSA to an advanced stage with CPHR, and once agreement reached on structure and content, BSAs for all WML biodiversity offset sites will be drafted for submission and execution. BSA security mechanism for Offset Management Areas and other NSW required biodiversity offsets are proposed to be in place in Q3 2026. The administrative modification to NSW development consent SSD-6464 will be withdrawn upon completion of the BSAs.

DCCEEW wrote to Warkworth Mining Ltd on 16 December 2025 following review of the Annual Compliance Report submitted on 2 May 2025, noting non-compliance with Condition 1 of EPBC 2002/629 and inviting WML to Show Cause why DCCEEW should not take compliance action. A response was provided to DCCEEW on 30 January 2026 detailing WML's progress with DPHI and CPHR towards securing offsets under a legally secured offset mechanism, the variation requests submitted to DCCEEW in relation to forecast timing, noting reporting updates and correspondence keeping DCCEEW

EPBC2002/629 Condition Number	Condition	Compliance status	Evidence/Comments (Goulburn River BA, Bowditch BA)
			updated, and requesting DCCEEW progress the variation request to timing initially commenced on 24 July 2020, with a proposed new date of 31 December 2026. DCCEEW response is pending.
2	To offset the impacts to the regent honeyeater and swift parrot, the person taking the action must submit to the Minister for approval an Offset Management Plan (OMP) for all of the Biodiversity Management Areas by no later than 13 April 2014. The OMP must include, but not be limited to, the following information:	Compliant	Regional Offset Management Plan (ROMP) submitted to the Environment Assessment Branch of Department of Environment (DoE) for Minister approval 14 April 2014 (13 April 2014 was a Sunday). Regional OMP approved by Minister 06 August 2014. The Independent Audit completed in 2015 indicated that separate Offset Management Plans for Bowditch and Goulburn River BAs would be preferable. In addition, separate plans are required for the legally binding mechanism. Therefore, in February 2017 individual plans were submitted to the Department for approval. In response to comments received from the Department of Environment and Energy (DoEE), further versions of the individual plans were submitted during 2017. The final revision, submitted to DoEE in December 2017, was approved on 16 February 2018. The Goulburn River and Bowditch BA Management Plans were revised and submitted to DPE for approval in July 2022. The revisions were approved by DPE on 12 August 2022.
2a	a textual description and map to clearly define the location and boundaries of all of the Biodiversity Management Areas. This must be accompanied with the offset attributes and a shapefile	Compliant	Section 2.1 MP Location and Description
2b	details of management actions to protect and enhance the extent and condition of habitat values of the offset areas including but not limited to rehabilitation, weed control, fire management, erosion and sediment control, management of livestock and restrictions on access of no less than 1,586 hectares of habitat for the regent honeyeater and swift parrot	Compliant	Section 3 Objectives, Key Performance Indicators and Completion Criteria and Section 4 Conservation Management Actions of the MP.
2c	the timing, responsibilities and performance criteria for management actions	Compliant	Section 4 Conservation Management Actions of the MP.
2d	a monitoring plan including the undertaking of ecological surveys by a qualified ecologist to assess the success of the management actions against identified milestones and objectives	Compliant	Section 5 Monitoring of the MP.
2e	a process to report, to the department, the management actions undertaken in the offset areas and the outcome of those actions, including identifying any need for improved management	Compliant	Section 1.3 Function of the MP.

EPBC2002/629 Condition Number	Condition	Compliance status	Evidence/Comments (Goulburn River BA, Bowditch BA)
2f	a description of the potential risks to successful management and rehabilitation in the offset areas, and a description of the contingency measures that would be implemented to mitigate these risks	Compliant	Section 4 Conservation Management Actions of the MP.
2g	details of parties responsible for management, monitoring and implementing the plan, including their position or status as a separate contractor.	Compliant	Section 1.3.2 Key Stakeholders and Roles.
	The approved OMP must be implemented. The person taking the action must publish the approved OMP on their website within 1 month of the OMP being approved by the Minister. The approved OMP must remain published until the expiry of the approval or until such time as agreed in writing by the Minister.	Compliant	<p>The <i>Regional Offset Management Plan Annual Report 2021 (Attachment A)</i> provides a summary of the management and monitoring activities completed in 2021.</p> <p>Approved Regional Offset Management Plan was originally published on Rio Tinto Coal Australia website on 5 September 2014.</p> <p>The Regional Offset Management Plan has now been superseded by individual management plans for the relevant Biodiversity Areas. The current Offset Management Plans are published on the Yancoal MTW website at the link below: https://www.yancoal.com.au/our-sites/mount-thorley-documents/#mgt-docs</p>
	Note: For clarity, the Biodiversity Management Areas in condition 1 and identified on the map in Attachment A can accommodate offset requirements for more than one species habitat within the one area, if a qualified ecologist verifies that suitable habitat is present and includes specific habitat requirements for the relevant species.		
3	The Compliance Report (referred to in condition 4) due in 2015, and Compliance Reports due in each subsequent fifth year until the expiry of the approval, must be audited by an independent auditor. Prior to the commencement of each audit, the independent auditor and the audit criteria must be approved by the Department.	Complaint	<p>The 2015 Compliance Report was audited in 2015 by an independent auditor (Peter Horn), approved by DoE on 24 July 2015.</p> <p>The Independent Audit report was sent to DoE on 20 October 2015.</p> <p>The 2019 Compliance Report was audited by an independent auditor (Hansen Bailey), approved by DPE on 27 – 30 April 2020.</p> <p>The Independent Audit Report was sent to DoE on 17 July 2020.</p> <p>The Compliance Report (due in 2025) was audited in 2025/early 2026 by an independent auditor (GHD). The independent audit team was approved by DCCEEW on 19 November 2025.</p> <p>The Independent Audit report was sent to DCCEEW on 17 March 2026 and approved by DCCEEW on 13 April 2026.</p>

EPBC2002/629 Condition Number	Condition	Compliance status	Evidence/Comments (Goulburn River BA, Bowditch BA)
			The next audit is due in 2030.
4	Within three months of every 12 month anniversary of the Commencement of Construction, the person taking the action must publish a report (the Compliance Report) on their website addressing compliance with each of the conditions of this approval, including implementation of any plans as specified in the conditions. Documentary evidence providing proof of the date of publication and non-compliance with any of the conditions of this approval must be provided to the department at the same time as the Compliance Report is published. The person taking the action must also notify any non-compliance with this approval to the department in writing within 2 business days of becoming aware of the non-compliance. The person taking the action must continue to annually publish the Compliance Report until such time as agreed in writing by the Minister.	Compliant	This report. Commencement of Construction June 2004.
5	If the person taking the action wishes to carry out any activity otherwise than in accordance with the plans, as specified in the conditions, the person taking the action must submit to the department for the Minister's written approval a revised version of that plan. The varied activity shall not commence until the Minister has approved the revised plan in writing. If the Minister approves the revised plan that plan must be implemented in place of the plan originally approved.	Compliant	Individual management plans were submitted to the Department for approval in February 2017 and subsequent revisions were submitted in December 2017. The final revisions were approved on 16 February 2018. The Goulburn River and Bowditch BA Management Plans were revised and submitted to DPE for approval in July 2022. The revisions were approved by DPE on 12 August 2022.
6	If the Minister believes that it is necessary or convenient for the better protection of listed threatened species and communities or listed migratory species to do so, the Minister may require that the person taking the action make specified revisions to a management plan specified in the conditions and submit the revised plan for the Minister's written approval. The revised approved plan must be implemented. Unless the Minister has approved the revised plan the person taking the	Compliant	Comments on the individual management plans were received from DoEE on 13/04/2017 and 22/06/2017. Agreed changes were made to the revised management plans submitted in December 2017.

**EPBC2002/629 Condition
Condition
Number**

Compliance status Evidence/Comments (Goulburn River BA, Bowditch BA)

action must continue to implement the originally approved plan, as specified in the conditions.

2.2 EPBC 2009/5081

EPBC2009/5081 Condition Number	Condition	Compliance status	Evidence/Comments (Southern BA, Northern BA, Putty BA, Condon View BA, Seven Oaks BA, Bowditch BA, North Rothbury BA)
1	<p>To offset the impact on the foraging habitat for <i>Anthochaera Phrygia</i> (regent honeyeater) and <i>Lathamus discolor</i> (swift parrot), the person taking the action must register a legally binding conservation mechanism over 94ha of land, as illustrated in the map at Attachment A as the Phase 1 Offset. The conservation mechanism must provide enduring protection for the Phase 1 Offset (Putty Road) and must be registered by 31 July 2020.</p> <p>Evidence of registration must be provided to the Department within 30 days of registration of the legally binding conservation mechanism.</p>	Pending	<p>A request was sent to DoEE on 7 December 2017 to extend the due date for a legally binding conservation covenant over the biodiversity areas beyond 17 February 2018. The request was sought on the basis of aligning the timeframe with the NSW Project Approval SSD 6464. DoEE advised by email on 28 February 2018, that given the request was submitted well in advance of 17 February 2018, that no non-compliance would be recorded. After additional consultation and correspondence with DoEE and the NSW Office of Environment and Heritage (OEH), further information was sent to DoEE on 11 September 2018 which noted that WML has been working with the OEH to secure the offsets as Biodiversity Stewardship Agreement (BSA's) pursuant to the Biodiversity Conservation Act 2016. As this Act commenced in August 2017, many of the systems, processes and transitional arrangements are being developed by OEH and the newly created Biodiversity Conservation Trust (BCT). WML had consulted with OEH and developed a timeline to step through the process to register the BSA's, and an extension request was sent to DoEE based on the proposed timeline.</p> <p>Approval from DoEE was received on 14/10/2018, with reference to the 7 December 2017 extension request, for the variation to condition 1 to extend the timeframe by which legally binding covenants must registered over the offset sites to 31 July 2020.</p> <p>Due to ongoing difficulties in reaching agreement with the NSW Biodiversity and Conservation Division (BCD) on whether the proposed offsets properties meet the species and ecosystem credit retirement requirements of the MTW State Approvals a further extension has been sought. MTW sent a letter (dated 24 July 2020) to Department of Agriculture, Water and the Environment (DAWE) requesting an extension of the timeframe to secure the offset areas until 31 July 2021. DAWE responded on 3 August 2020 acknowledging that MTW had contacted DAWE to remedy the potential breach of conditions of approval and that due to the high volume of approval requests it would take some time to respond to this request. DAWE responded to MTW on 7 October 2020 that the proposed timeframe for completion of the legally binding conservation mechanism process was too short and recommended that MTW review the schedule for completion.</p> <p>MTW submitted an administrative modification to NSW development consent SSD-6464 on 29 April 2021 to clarify biodiversity offset requirements for the Warkworth Continuation Project and to facilitate in-perpetuity conservation of biodiversity offset</p>

**EPBC2009/5081 Condition
Condition
Number**

Compliance status

Evidence/Comments (Southern BA, Northern BA, Putty BA, Condon View BA, Seven Oaks BA, Bowditch BA, North Rothbury BA)

land. The Department of Planning and Environment (DPE) requested additional information on 9 August 2021 and further information on 11 October 2021 (MTW provided responses to these requests on 2 September 2021 and 20 December 2021, respectively).

On 11 October 2021 an updated variation request was submitted to DAWE providing background and justification for WML's request, including notification of the modification application submitted to NSW Department of Planning, Infrastructure and Environment on 29 April 2021 to modify the Warkworth Continuation Project to clarify offset requirements and to facilitate in-perpetuity conservation of biodiversity offset land. The variation request sought an extension to 31 July 2023, and advised WML will continue to manage the offset areas for conservation management consistent with its approved offset management plans regardless of these delays to formal security.

Subsequently, Department of Planning, Housing and Infrastructure (DPHI) in consultation with Biodiversity, Conservation and Science (BCS) advised MTW that a BSA is the only mechanism acceptable to the NSW Government for in-perpetuity security of biodiversity offset land. The establishment of a BSA requires biodiversity offset credits to be retired. Biodiversity offset credits for the MTW offset land were determined under prior mechanisms and need to be converted to current Biodiversity Assessment Method (BAM) credits. During 2025, MTW continued working with Conservation Programs, Heritage and Regulation (CPHR) Division (formerly BCS) and DPHI to progress BSAs for the offset land areas. WML has progressed a single BSA to an advanced stage with CPHR, and once agreement reached on structure and content, BSAs for all WML biodiversity offset sites will be drafted for submission and execution. BSA security mechanism for Offset Management Areas and other NSW required biodiversity offsets are proposed to be in place in Q3 2026. The administrative modification to NSW development consent SSD-6464 will be withdrawn upon completion of the BSAs.

DCCEEW wrote to Warkworth Mining Ltd on 16 December 2025 following review of the Annual Compliance Report submitted on 2 May 2025, noting non-compliance with Condition 1 of EPBC 2002/629 and inviting WML to Show Cause why DCCEEW should not take compliance action. A response was provided to DCCEEW on 30 January 2026 detailing WML's progress with DPHI and CPHR towards securing offsets under a legally secured offset mechanism, the variation requests submitted to DCCEEW in relation to forecast timing, noting reporting updates and correspondence keeping DCCEEW updated, and requesting DCCEEW progress the variation request to timing

EPBC2009/5081 Condition Condition Number	Compliance status	Evidence/Comments (Southern BA, Northern BA, Putty BA, Condon View BA, Seven Oaks BA, Bowditch BA, North Rothbury BA)
		initially commenced on 24 July 2020, with a proposed new date of 31 December 2026. DCCCEW response is pending.
2 To offset the impacts on the foraging habitat of the regent honeyeater and swift parrot, the person taking the action must submit to the Minister for approval an Offset Management Plan (OMP) for the Phase 1 Offset identified in Attachment A by no later than 13 April 2014. The OMP must include, but not be limited to the following:	Compliant	Draft Putty Road Offset - Offset Management Plan (OMP) submitted to Department of Environment and Energy (DoEE) 14 April 2014 (13 April was a Sunday). DoEE approval of Putty Road Offset OMP dated 4 July 2014. In February 2017 a Southern BA Offset Management Plan was submitted to the Department for approval, as it contains the Phase 1 Offset (Putty Road Offset Area) and the Phase 2 Offset. This plan is to be used as part of the legally binding mechanism to secure both the Phase 1 and 2 Offsets. A revised version of the Southern BA Management Plan was submitted to DoEE in December 2017 to address comments provided by DoEE on the February 2017 version. The Southern BA Management Plan was approved by DoEE on 16 February 2018. The Southern BA Management Plan was reviewed and submitted in November 2020. The revisions were approved by DPE on 20 July 2021. The Southern BA Management Plan was reviewed and submitted in July 2022. The revisions were approved by DPE on 12 August 2022.
2a a textual description and map to clearly define the location and boundaries of all of the offset areas. This must be accompanied with the offset attributes and a shapefile	Compliant	Section 2.1 Location and description of the MP
2b details of management actions to protect and enhance the extent and condition of habitat values of the offset areas including but not limited to rehabilitation, weed control, fire management, erosion and sediment control, management of livestock and restrictions on access to habitat for the regent honeyeater and swift parrot	Compliant	Section 3 Objectives, Key Performance Indicators and Completion Criteria and Section 4 Conservation Management Actions of the MP.
2c the timing, responsibilities and performance criteria for management actions	Compliant	Section 4 Conservation Management Actions of the MP.
2d a monitoring plan including the undertaking of ecological surveys by a qualified ecologist to assess the success of the management actions against identified milestones and objectives	Compliant	Section 5 Monitoring of the MP.
2e a process to report, to the department, the management actions undertaken in the offset areas and the outcome of those actions, including identifying any need for improved management	Compliant	Section 1.3.2 Key Stakeholders and Roles.
2f a description of the potential risks to successful management and rehabilitation in the offset areas, and a description of the	Compliant	Section 4 Conservation Management Actions and Section 6 Risk Assessment of the MP.

EPBC2009/5081 Condition Condition Number	Compliance status	Evidence/Comments (Southern BA, Northern BA, Putty BA, Condon View BA, Seven Oaks BA, Bowditch BA, North Rothbury BA)
		contingency measures that would be implemented to mitigate these risks
2g	Compliant	Section 1.3.2 Key Stakeholders and Roles.
	Compliant	<p>The approved OMP must be implemented.</p> <p>Note: Offset areas can accommodate offset requirements for more than one species habitat within the one area, if a qualified ecologist verifies that suitable habitat is present and includes specific habitat requirements for the relevant species.</p> <p>Implementation of the conservation management strategies and monitoring as described in the Putty Road OMP and the broader Local OMP is supported by their Annual Reports. The Local OMP describes the management of the area surrounding the Putty Road Offset, this area is referred to as the Southern Biodiversity Area.</p> <p>The <i>Local Offset Management Plan Annual Report 2025 (Attachment B)</i> provides a summary of the management and monitoring activities completed in 2025.</p>
3	Compliant	<p>Prior to Commencement of Construction of Phase 2 of the action, the person taking the action must submit to the Minister details of at least 2,532 hectares of suitable habitat for the Regent Honeyeater and Swift Parrot (Phase 2 Offset) to offset impacts on foraging habitat for these two species.</p> <p>The details of offset sites must include offset attributes and shapefiles and ecological assessment reports. If the offset sites are different to those offset sites previously approved under the approval granted on 9 August 2012, the new offset sites must be submitted to the Minister for approval.</p> <p>Submission of the Phase 2 offsets details was on the 12 January 2016.</p> <p>Approval of Phase 2 offsets was 17 February 2016.</p>
4	Pending	<p>To offset the impacts on the foraging habitat of the Regent Honeyeater and Swift Parrot, the person taking the action must register a legally binding conservation mechanism on all Phase 2 offsets by 31 July 2020.</p> <p>Evidence of registration must be provided to the Department within 30 days of registration of the legally binding conservation mechanism.</p> <p>A request was sent to DoEE on 7 December 2017 to extend the due date for a legally binding conservation covenant over the biodiversity areas beyond 17 February 2018. The request was sought on the basis of aligning the timeframe with the NSW Project Approval SSD 6464. DoEE advised by email on 28 February 2018, that given the request was submitted well in advance of 17 February 2018, that no non-compliance would be recorded. After additional consultation and correspondence with DoEE and the NSW Office of Environment and Heritage (OEH), further information was sent to DoEE on 11 September 2018 which noted that WML has been working with the OEH to secure the offsets as Biodiversity Stewardship Agreement (BSA's) pursuant to the Biodiversity Conservation Act 2016. As this Act commenced in August 2017, many of the systems, processes</p>

**EPBC2009/5081 Condition
Condition
Number**

Compliance status

Evidence/Comments (Southern BA, Northern BA, Putty BA, Condon View BA, Seven Oaks BA, Bowditch BA, North Rothbury BA)

and transitional arrangements are being developed by OEH and the newly created Biodiversity Conservation Trust (BCT). WML had consulted with OEH and developed a timeline to step through the process to register the BSA's, and an extension request was sent to DoEE based on the proposed timeline.

Approval from DoEE was received on 14/10/2018, with reference to the 7 December 2017 extension request, for the variation to condition 1 to extend the timeframe by which legally binding covenants must be registered over the offset sites to 31 July 2020.

Due to ongoing difficulties in reaching agreement with the NSW Biodiversity and Conservation Division (BCD) on whether the proposed offsets properties meet the species and ecosystem credit retirement requirements of the MTW State Approvals a further extension has been sought. MTW sent a letter (dated 24 July 2020) to Department of Agriculture, Water and the Environment (DAWE) requesting an extension of the timeframe to secure the offset areas until 31 July 2021. DAWE responded on 3 August 2020 acknowledging that MTW had contacted DAWE to remedy the potential breach of conditions of approval and that due to the high volume of approval requests it would take some time to respond to this request. DAWE responded to MTW on 7 October 2020 that the proposed timeframe for completion of the legally binding conservation mechanism process was too short and recommended that MTW review the schedule for completion.

MTW submitted an administrative modification to NSW development consent SSD-6464 on 29 April 2021 to clarify biodiversity offset requirements for the Warkworth Continuation Project and to facilitate in-perpetuity conservation of biodiversity offset land. The Department of Planning and Environment (DPE) requested additional information on 9 August 2021 and further information on 11 October 2021 (MTW provided responses to these requests on 2 September 2021 and 20 December 2021, respectively).

On 11 October 2021 an updated variation request was submitted to DAWE providing background and justification for WML's request, including notification of the modification application submitted to NSW Department of Planning, Infrastructure and Environment on 29 April 2021 to modify the Warkworth Continuation Project to clarify offset requirements and to facilitate in-perpetuity conservation of biodiversity offset land. The variation request sought an extension to 31 July 2023, and advised WML will continue to manage the offset areas for conservation management

EPBC2009/5081 Condition Condition Number	Compliance status	Evidence/Comments (Southern BA, Northern BA, Putty BA, Condon View BA, Seven Oaks BA, Bowditch BA, North Rothbury BA)
5	The approved OMP, as described in condition 2, must be revised by the person taking the action to include, but not be limited to, those	Compliant The OMP is to be revised to include the approved Phase 2 offsets on or before 17 February 2017.

consistent with its approved offset management plans regardless of these delays to formal security.

Subsequently, Department of Planning, Housing and Infrastructure (DPHI) in consultation with Biodiversity, Conservation and Science (BCS) advised MTW that a BSA is the only mechanism acceptable to the NSW Government for in-perpetuity security of biodiversity offset land. The establishment of a BSA requires biodiversity offset credits to be retired. Biodiversity offset credits for the MTW offset land were determined under prior mechanisms and need to be converted to current Biodiversity Assessment Method (BAM) credits. During 2025, MTW continued working with Conservation Programs, Heritage and Regulation (CPHR) Division (formerly BCS) and DPHI to progress BSAs for the offset land areas. WML has progressed a single BSA to an advanced stage with CPHR, and once agreement reached on structure and content, BSAs for all WML biodiversity offset sites will be drafted for submission and execution. BSA security mechanism for Offset Management Areas and other NSW required biodiversity offsets are proposed to be in place in Q3 2026. The administrative modification to NSW development consent SSD-6464 will be withdrawn upon completion of the BSAs.

DCCEEW wrote to Warkworth Mining Ltd on 16 December 2025 following review of the Annual Compliance Report submitted on 2 May 2025, noting non-compliance with Condition 1 of EPBC 2002/629 and inviting WML to Show Cause why DCCEEW should not take compliance action. A response was provided to DCCEEW on 30 January 2026 detailing WML's progress with DPHI and CPHR towards securing offsets under a legally secured offset mechanism, the variation requests submitted to DCCEEW in relation to forecast timing, noting reporting updates and correspondence keeping DCCEEW updated, and requesting DCCEEW progress the variation request to timing initially commenced on 24 July 2020, with a proposed new date of 31 December 2026. DCCEEW response is pending.

EPBC2009/5081 Condition Number	Compliance status	Evidence/Comments (Southern BA, Northern BA, Putty BA, Condon View BA, Seven Oaks BA, Bowditch BA, North Rothbury BA)
<p>activities as described in condition 2a-g for the Phase 2 Offset. The revised OMP must be submitted for approval by the Minister within 12 months of the submission of details/approval of Phase 2 Offset.</p>		<p>Plans were submitted for approval on 15 February 2017 for the Southern, Northern, North Rothbury, Seven Oaks, Condon View and Putty BAs.</p> <p>The Southern and Northern BA Plans were reviewed and submitted November 2020. The revisions were approved by DPE on 20 July 2021.</p> <p>The Southern, Northern, North Rothbury, Seven Oaks, Condon View and Putty BA Management Plans were reviewed and submitted in July 2022. The revisions were approved by DPE on 12 August 2022.</p>
<p>Re-establishment of Woodland in Biodiversity Management and Offset Areas</p>		
<p>6 Within 12 months of the Commencement of Construction of Phase 1, the person taking the action must submit to the Minister for approval a Re-establishment Plan (REP) for the Phase 1 Offset area. The REP must include, but not be limited to the following:</p> <ul style="list-style-type: none"> a. details of the areas to be re-established (re-establishment areas) including location and maps; b. documentation including mapping of current environmental values relevant to MNES of the re-establishment areas; c. where revegetation through planting seedlings and/or seeds is intended, details of appropriate species and ratios of species relevant to historically occurring listed migratory and listed threatened species' habitat; d. the source and provenance of the seeds and/or seedlings which will be used; e. measures to address threats to MNES including but not limited to grazing pressure and damage by livestock and adverse impacts from feral animals and weeds; f. measures to provide fire management regimes appropriate for the MNES; g. measures to manage the MNES in accordance with the recommendations of the approved recovery plan for the migratory and threatened species; 	<p>Compliant</p>	<p>Draft Putty Road Offset REP submitted to DoE 2 February 2015.</p> <p>Comments were received on the 18 July 2016.</p> <p>WML sought approval to address these comments in the Southern BA Management Plan, which was submitted on 15 February 2017. This plan includes a compliance table to show that all elements of this condition are met.</p> <p><i>The Local Offset Management Plan Annual Report 2025 (Attachment B) provides a summary of the management and monitoring activities completed in 2025.</i></p>

EPBC2009/5081 Condition Condition Number	Compliance status	Evidence/Comments (Southern BA, Northern BA, Putty BA, Condon View BA, Seven Oaks BA, Bowditch BA, North Rothbury BA)
<ul style="list-style-type: none"> h. monitoring measures including ecological surveys to measure the establishment and ongoing success of the revegetation based on a comparison with high quality habitat for the MNES; i. performance measures and reporting requirements against identified objectives, including trigger levels for contingency measures to be taken to ensure performance measures and objectives are met; and j. identify persons responsible and arrangements for implementing the REP and for reporting on performance. <p>The approved REP must be implemented.</p>		
<p>7 The approved REP, as described in condition 6, must be revised by the person taking the action to include at least those activities as described in conditions 6a-j for the Phase 2 Offset. The revised REP must be submitted for approval by the Minister within 12 months of the Commencement of Construction of Phase 2 of the action. The approved revised REP must be implemented.</p>	Compliant	<p>The REP is to be revised to include the approved Phase 2 offsets on or before 16 February 2017.</p> <p>The Management Plans submitted for the Southern, Northern, North Rothbury, Seven Oaks, Condon View and Putty BAs on 15 February 2017 for approval. These plans contained the requirements of the REP and include a compliance table to show that all elements of this condition are met.</p>
<p>8 As a precautionary approach, the person taking the action must within 6 months of the date of this approval, or such other timeframe as specified in writing by the Minister, provide to the Minister any NSW Government approved water management plans which apply to the approved action.</p>	Compliant	<p>Water Management Plan (WMP) approved by NSW regulator 10 September 2014. A copy of the WMP was sent to DoEE on 15 September 2014. No request has been received by DoEE to provide further copies of the WMP.</p> <p>The Water Management Plan was revised and submitted to NSW Department of Planning and Environment (DPE) on 2/12/2015 following the WML and MTO Continuation Approvals. It was subsequently approved on 29/1/2016. A minor revision to update monitoring programmes was completed on 21/3/2016. A major revision was submitted to DPE on 16/5/2017, following the incorporation of stream and riparian health monitoring in Wollombi Brook and Loders Creek. The plan was approved 26 June 2017. The WMP was revised and submitted to DPE on 30 November 2017 to reflect the change to Yancoal ownership. The plan was approved 12 February 2018. The WMP was revised and submitted to DPE on 27 July 2018 following the Annual Review submission. Changes were made on 18 September</p>

EPBC2009/5081 Condition Number	Compliance status	Evidence/Comments (Southern BA, Northern BA, Putty BA, Condon View BA, Seven Oaks BA, Bowditch BA, North Rothbury BA)
		<p>2018 in response to DP&E feedback and the revised plan was approved 20 September 2018.</p> <p>The WMP was reviewed and submitted to DPE on 30 April 2020 to include revised water management classifications following regulatory feedback and updates to HRSTS content. The revised plan was approved 13 May 2020.</p> <p>The WMP was reviewed and submitted to DPE on 28 July 2020 to include updated monitoring programmes revised triggers. An additional update was submitted on the 31 October 2021 and included the monitoring programmes revised triggers and surface water and groundwater monitoring location plans, and the incorporation of DPE feedback on rehabilitation runoff and water management infrastructure figures. Updates were also made to HRSTS licence discharge limits to align with current Environmental Protection Licences and change website references. The revised plan was approved 15 November 2021.</p> <p>The WMP was reviewed and submitted to DPE on 29 August 2023 to include updated monitoring programmes (revised triggers and groundwater monitoring location plan to remove locations that have been mined through). Updates to reflect Warkworth Continuation Project (SSD-6464 MOD2). Change from Mining Operations Plan references to Rehabilitation Management Plan references after commencement of the rehabilitation reforms. Update to figures and other minor revisions.</p> <p>The currently approved version of the WMP can be found at https://www.yancoal.com.au/our-sites/mount-thorley-documents/#mgt-docs</p>
9	Compliant	These conditions are addressed in the WMP (refer Condition 8).
10	Not triggered	

EPBC2009/5081 Condition Number	Condition	Compliance status	Evidence/Comments (Southern BA, Northern BA, Putty BA, Condon View BA, Seven Oaks BA, Bowditch BA, North Rothbury BA)
	Minister may require in writing that the person taking the action provide additional information within a specified timeframe.		
11	<p>The person taking the action must, within 12 months of the Commencement of Construction of Phase 1, and within 12 months of the Commencement of Construction of Phase 2, submit to the Minister for approval a Mine Site Rehabilitation Plan (MSRP) for the progressive rehabilitation and revegetation of no less than 32ha woodland of mined areas for Phase 1 and 2,303ha of woodland habitat on mined areas for Phase 2.</p> <p>The MSRP must include, at a minimum, the following information:</p> <ul style="list-style-type: none"> a. the desired outcomes/objectives of implementing the MSRP b. details of the vegetation communities to be rehabilitated and the timing of progressive rehabilitation c. a process to progressively report to the department the rehabilitation management actions undertaken and the outcome of those actions, and the mechanisms to be used to identify the need for improved management d. a description of the potential risks to successful management and rehabilitation on the project site, and a description of the contingency measures that would be implemented to mitigate these risks e. details of parties responsible for reviewing and implementing the plan f. details of long term management and protection of the mine site <p>The approved MSRP must be implemented.</p>	Compliant	<p>The Mine Site Rehabilitation Plan (MSRP) was contained within the Mining Operations Plans; a copy of which was submitted to DoEE 2 February 2015.</p> <p>Feedback was received from DoEE on the 18 July 2016.</p> <p>Approval was received to address these comments in the next revision of the Mining operations Plan. The revised Mining Operations Plan was submitted to DoEE for approval on 23 May 2019. Approval from DoEE was received on 11 March 2020.</p> <p>The revised Mining Operations Plan was submitted to DoEE on 18 November 2021. Approval from DoEE was received on 30 November 2021.</p> <p>Rehabilitation Management Plans (RMPs), Annual Rehabilitation Reports (ARRs) and Forward Programs (FPs) are required to be prepared under the new standard rehabilitation conditions on mining leases. The RMP was first prepared on 28 July 2022. The RMP and FP documents takes the place of the Mining Operations Plan.</p> <p>In December 2023, MTW received approval from Resources Regulator on the associated Rehabilitation Objectives Statement and Final Landform and Rehabilitation Plan. The approved objectives and final landform have been incorporated into an updated RMP. The RMP was updated in January 2026 and included the following amendments: updated rehabilitation risk assessment; indicative Life of Mine rehabilitation progression; and changes to address recommendations from Resources Regulator arising from Targeted Assessment Programs. This RMP was submitted to Department of Climate Change, Energy, the Environment and Water (DCCEEW) for approval on 29 January 2026. The 2025 Annual Rehabilitation Report and Forward Program 2026 to 2028 were prepared in March 2026 and submitted to DCCEEW on 15 April 2026.</p>
12	<p>The person taking the action must submit to the Minister for approval a Mine Closure Plan (MCP) at least 6 months prior to the closure of the mine. The approved MCP must be implemented.</p> <p>Note: The person taking the action may develop a single mine</p>	Not triggered	

EPBC2009/5081 Condition Number	Condition	Compliance status	Evidence/Comments (Southern BA, Northern BA, Putty BA, Condon View BA, Seven Oaks BA, Bowditch BA, North Rothbury BA)
	rehabilitation plan to align with the requirements of this approval and those of the NSW Government.		
13	All survey data collected for the project must be collected and recorded so as to conform to data standards notified from time to time by the department. When requested by the department, the person taking the action must provide to the department all species and ecological survey data and related survey information from ecological surveys undertaken for MNES. This survey data must be provided within 30 business days of request, or in a timeframe agreed to by the department in writing. The department may use the survey data for other purposes.	Compliant	All survey data is retained by WML, the offset data is stored within the Biodiversity Offset Portal. Access to the portal was provided to DoEE in 2015. No requests for survey data have been received.
14	Within 14 days after the Commencement of Construction of Phases 1 and 2, the person taking the action must advise the department in writing of the actual date of Commencement of Construction.	Compliant	Phase 1 construction commenced on 3 February 2014 and WML notified DoEE in writing on 13 February 2014. Phase 2 construction commenced on 16 February 2016 and WML notified DoEE in writing on 16 February 2016.
15	Within 3 months of every 12 month anniversary of the Commencement of Construction of Phase 1, the person taking the action must publish a report (the Compliance Report) on their website addressing compliance with each of the conditions of this approval, including implementation of any plans as specified in the conditions. Documentary evidence providing proof of the date of publication and non-compliance with any of the conditions of this approval must be provided to the department at the same time as the Compliance Report is published. The person taking the action must also notify any non-compliance with this approval to the department in writing within 2 business days of becoming aware of the noncompliance. The person taking the action must continue to annually publish the Compliance Report until such time as agreed in writing by the Minister.	Compliant	Compliance report due before 3 May each year (based on date of commencement of construction 3 February 2014). 2025 Compliance Report published on Yancoal MTW website 1 May 2026.
16	Upon the direction of the Minister, the person taking the action must ensure that an independent audit of compliance with the conditions of approval is conducted and a report submitted to the Minister. The independent auditor must be approved by the	Not triggered	

EPBC2009/5081 Condition Number	Condition	Compliance status	Evidence/Comments (Southern BA, Northern BA, Putty BA, Condon View BA, Seven Oaks BA, Bowditch BA, North Rothbury BA)
	Minister prior to the commencement of the audit. Audit criteria must be agreed to by the Minister and the audit report must address the criteria to the satisfaction of the Minister.		
17	<p>Where the conditions require the person taking the action to submit a plan for the Minister's approval, the person taking the action must maintain a register recording:</p> <ul style="list-style-type: none"> a. the date on which each plan was approved by the Minister b. if a plan has not been approved by the Minister, the date on which it was, or is expected to be, submitted to the Minister. c. the dates on which reports on the outcomes of reviews have been approved by the Minister d. the dates on which the subsequent reviews are due <p>The register must be submitted to the department at the time as the Compliance Report, as described at condition 15.</p>	Compliant	Compliance Register submitted with this report (Attachment C)
18	<p>If the person taking the action wishes to carry out any activity otherwise than in accordance with the plans, as specified in the conditions, the person taking the action must submit to the department for the Minister's written approval a revised version of that plan. The varied activity shall not commence until the Minister has approved the revised plan in writing. If the Minister approves the revised plan that plan must be implemented in place of the plan originally approved.</p>	Not triggered	
19	<p>If the Minister believes that it is necessary or convenient for the better protection of listed threatened species and communities or listed migratory species to do so, the Minister may require that the person taking the action make specified revisions to a management plan specified in the conditions and submit the revised plan for the Minister's written approval.</p> <p>The revised approved plan must be implemented. Unless the Minister has approved the revised plan the person taking the action must continue to implement the originally approved plan, as specified in the conditions.</p>	Not triggered	

EPBC2009/5081 Condition Condition Number	Compliance status	Evidence/Comments (Southern BA, Northern BA, Putty BA, Condon View BA, Seven Oaks BA, Bowditch BA, North Rothbury BA)
20 If, at any time after 5 years from the date of this approval, the person taking the action has not substantially commenced the action, then the person taking the action must not substantially commence the action without the written agreement of the Minister.	Not triggered	The action has commenced as per the Commencement of Construction (3 February 2014)
21 The person taking the action must maintain accurate records substantiating all activities and outcomes associated with or relevant to the above conditions of approval, including measures taken to implement the management plans required by this approval, and make them available upon request to the department. Such records may be subject to audit by the department or an independent auditor appointed and/or approved by the department, and used to verify compliance with the conditions of approval. Summaries of audits will be posted on the department's website. The results of audits may also be publicised through the general media.	Compliant	Records of activities and outcomes are maintained by WML.
22 Unless otherwise agreed to in writing by the Minister, the person taking the action must publish all plans referred to in these conditions of approval on their website. Each plan must be published on the website within 1 month of being approved. The person taking the action must notify the department within 5 business days of publishing the plan on their website and the plan must remain on the website for the period this approval has effect.	Compliant	All approved plans have been published on the Yancoal MTW website.

3. New environmental risks and potential threats to Matters of National and State Environmental Significance

No new environmental risks have been identified during the reporting period.

ATTACHMENT A:

Regional Offset Management Plan

Annual Report 2025



Regional Biodiversity Areas

Annual Report 2025

Annual report for the period from January to December 2025, for activities described in the Management Plans for all regional Warkworth Mining Limited offsets including:

- Goulburn River Biodiversity Area
- Seven Oaks Biodiversity Area
- Bowditch Biodiversity Area
- Putty Biodiversity Area
- Condon View Biodiversity Area
- North Rothbury Biodiversity Area

Table of Contents

1	Introduction	3
2	Location and landholder details.....	4
3	Summary of activities – 2025.....	8
3.1	Summary of climatic conditions	8
4	Monitoring Activities.....	15
4.1	Bird assemblages monitoring	15
4.2	Habitat restoration monitoring	15
5	Progress in attaining Conservation Objectives against Key Performance Indicators	15
6	Adaptive Management	16

Revision

Version No.	Version Details	Document Status	Date
1.0	Environment and Community Advisor	Final	30/03/2026

1 INTRODUCTION

This annual report is a requirement of the Management Plans for all regional Warkworth Mining Limited offsets for the 2025 reporting period from 1 January through to 31 December 2025.

The annual report provides a summary of the key management activities completed across the biodiversity offsets located within the Goulburn River, Seven Oaks, Bowditch, Putty, Condon View and North Rothbury Biodiversity Areas (BAs).

The management plans describe the conservation management strategies and monitoring to achieve, and measure improvement and protection of the offset's biodiversity values. It is a compliance requirement of the Commonwealth and NSW environmental approvals to implement the management plans.

The Regional Offset Management Plan (ROMP) was prepared to satisfy the consent requirements for the New South Wales (NSW) Hunter Valley Operations (HVO) South Project Approval (PA 06_0261) and the Warkworth Mine Commonwealth EPBC 2002/629 Approval. In November 2015, the NSW Warkworth Continuation Project Approval (SSD-6464) was granted providing both NSW and Commonwealth approval for the same disturbance area. Phase 2 of the EPBC2009/5081 action also commenced on 16 February 2016. In response to the granting of these approvals, Management Plans for the Bowditch and Goulburn River BA's have been prepared to satisfy the Commonwealth approval EPBC2009/5081 and the NSW consent (SSD-6464), replacing the ROMP. On 10 October 2016 HVO was granted approval (EPBC2016/7604), The Condon View BA provides 168ha of suitable direct offset to be compliant with this approval. Management Plans have also been prepared and submitted for the regional BAs: Seven Oaks, Putty, Condon View and North Rothbury.

The Biodiversity Offset Portal contains all the supporting documentation for this report, including photo point monitoring. Access to the portal is restricted, relevant regulators have been provided with login details; please contact Mount Thorley Warkworth should you require assistance.

2 LOCATION AND LANDHOLDER DETAILS

The locations of the regional BAs are shown in **Figure 1**, further details are provided in **Table 1**. The land is owned by Warkworth Mining Limited (WML). The Goulburn River BA is owned by Warkworth Mining Limited and has a portion of the total area designated as an offset for Hunter Valley Operations (HVO). Details of the Warkworth and HVO Offset areas are in **Table 2 and Figure 1 and 2**.

Table 1 Regional Biodiversity Areas

Biodiversity Area	Local Government Area	Land Owner	Area (ha)	Offset Area (ha)	Location
Goulburn River	Upper Hunter / Mid-Western	Warkworth Mining Limited	1,539	1,206	'The Rivers' 30km west of Merriwa, via Dulhunty Road, Comialla Road and Golden Hwy.
Bowditch	Muswellbrook	Warkworth Mining Limited	607	602	3km north of Sandy Hollow, 3450 Wybong Road, via Golden Hwy.
Seven Oaks	Mid-Western	Warkworth Mining Limited	521	519	35km west of Merriwa via Ulan Road, Summer Hill Road, Durridgerie Road and Smedes Road.
Condon View	Singleton	Warkworth Mining Limited	445	345	5km west of Putty via Box Tree Clearing Trail off Putty Valley Road.
Putty	Singleton	Warkworth Mining Limited	386	383	5km south of Putty via Box Gap Road.
North Rothbury	Cessnock	Warkworth Mining Limited	41	41	1km south of North Rothbury via Wine Country Drive.

Table 2 Goulburn River Biodiversity Area

Biodiversity Area	Land Owner	Area (ha)	Warkworth Offset Area (ha)	HVO Offset Area (ha)
Goulburn River	Warkworth Mining Limited	1,539	1,066	140

Location of the Warkworth Mining Limited Biodiversity Areas

Annual Compliance Report

Figure 1

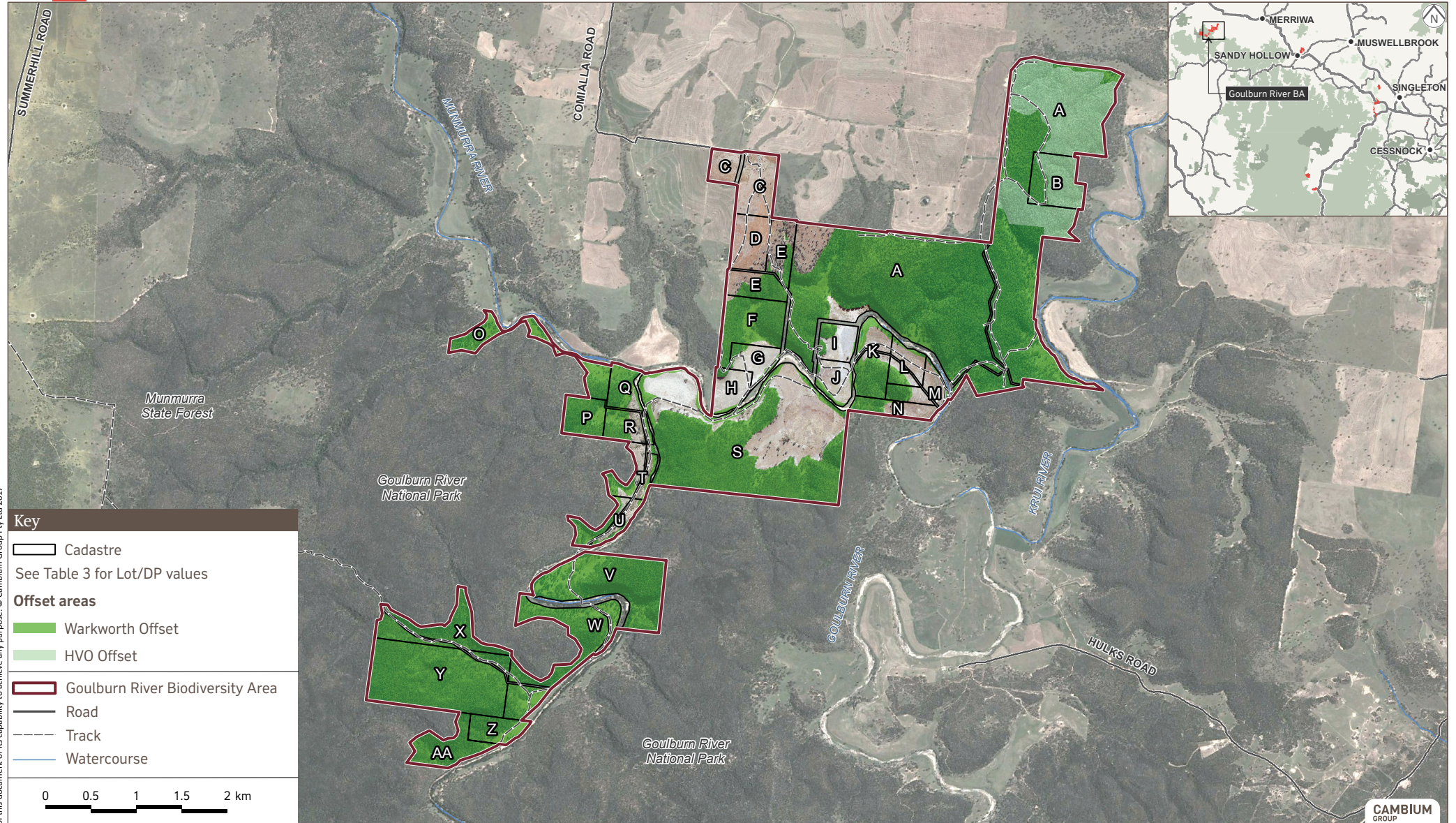


DISCLAIMER
 Cambium Group Pty Ltd disclaims all liability for all claims, expenses, losses, damages, and costs any person/company may incur as a result of their/its reliance on the accuracy or completeness of this document or its capability to achieve any purpose. © Cambium Group Pty Ltd 2019

Cadastral boundaries and offset areas at the Goulburn River Biodiversity Area

Management Plan 2022

Figure 2



DISCLAIMER
Cambium Group Pty Ltd disclaims all liability for all claims, expenses, losses, damages, and costs any person/company may incur as a result of their reliance on the accuracy or completeness of this document or its capability to achieve any purpose. © Cambium Group Pty Ltd 2017

3 SUMMARY OF ACTIVITIES – 2025

Table 3 provides a summary of the activities undertaken during the reporting period (Year 9) and the progress in attaining the Performance Criteria for the key Conservation Management Strategies in the management plans.

3.1 Summary of climatic conditions

Figure 4 shows the monthly actual rainfall in 2025 compared to the long-term average for the regional Biodiversity Areas for the reporting period. The Putty region received 766mm which was 30mm above the long-term average. North Rothbury received 993mm, 250mm above the long-term average. Sandy Hollow received 523mm which was 69mm below the long-term average and the Merriwa region received 562mm, 36mm below the long-term average.

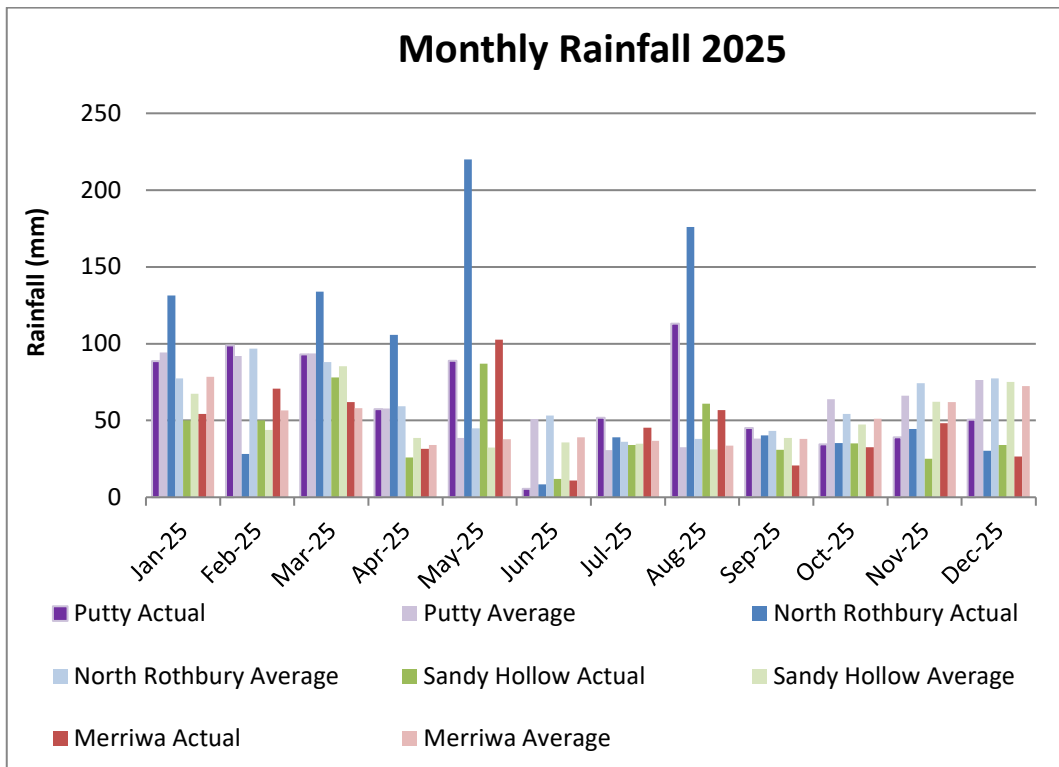


FIGURE 4 MONTHLY RAINFALL - 2025

Table 3 Summary of progress against Performance Criteria

Conservation Actions	Year 1 to Year 4	Year 5 to Year 10 (2025 is Year 9)	Completion Criteria	Actions 2026
ACTIVE RESTORATION				
Goulburn River BA Yellow Box – Grey Box – Red Gum grassy woodland (21.5ha) and River Oak riparian woodland (24.2ha)				
<i>Performance Criteria</i>	<i>Collection of seed. Plant propagation. Tubestock planted. Completed survival assessment.</i>		<i>Planting achieves above 70% survival.</i>	
Activity / Progress	<p>Seed collection was undertaken at the Goulburn River BA in 2021.</p> <p>In 2019 17,000 tube stock was planted into 21.5ha of Yellow Box-Red Gum grassy woodland and 24.2ha of River Oak riparian woodland.</p> <p>The site preparation for these sites included ripping by dozer and weed control. To mimic nature the tree species were planted at a spacing of 5 -30m. All plants were watered, fertilised and protected with a tree guard.</p> <p>In 2020 maintenance of planting areas was undertaken and included infill planting of 12,000 tubestock.</p> <p>Survival assessments undertaken.</p>	<p>In 2021 maintenance of planting areas was undertaken and included infill planting of 12,000 tubestock into areas that could be accessed.</p> <p>In 2022 planting of 10,000 tube stock was delayed due access issues crossing the Goulburn River.</p> <p>In 2023 maintenance of planting areas was undertaken and included infill planting of 10,000 tubestock into areas that could be accessed. Survival assessment undertaken.</p> <p>In 2024 maintenance of planting areas was undertaken.</p> <p>In 2025 maintenance of planting areas was undertaken, including plant guard removal (such as from established plantings) and slashing works.</p>		<p>Seed collection.</p> <p>Review and revise Goulburn River Biodiversity Area Management Plan, to include updates to the supplementary planting section.</p>
All Regional BA's				
<i>Performance Criteria</i>	<i>Review monitoring data to identify areas that require re-planting. If re-planting is identified, develop a re-establishment plan and implement within 12 months</i>			
Activity / Progress	<p>Ecological monitoring results have identified infill planting requirements in the River Oak riparian areas of the Goulburn River BA and Cassinia/Acacia regenerating Shrubland/Woodland of the Seven Oaks BA.</p> <p>A consultant review of proposed revisions (based on recommendations from ecologist, bird monitoring specialist and bush regenerator) to the supplementary planting section of the Goulburn River and Seven Oaks Biodiversity Area Management Plans, was undertaken. The recommendations of the review report will be used to inform revisions to the supplementary sections of the relevant Management Plans and will be submitted to relevant stakeholders for their review in 2026.</p>			

Conservation Actions	Year 1 to Year 4	Year 5 to Year 10 (2025 is Year 9)	Completion Criteria	Actions 2026
PASSIVE RESTORATION				
Weed control and monitoring				
<i>Performance Criteria</i>	<p>At least two weed control events each year for species listed in Table 14 of Management Plans and other weeds recorded from monitoring activities.</p> <p>Complete Ecological Monitoring, Rapid Condition Assessments and Property Inspections.</p>	<p>At least one weed control event each year for species listed in Table 14 of Management Plans and other weeds recorded from monitoring activities.</p> <p>Complete Ecological Monitoring, Rapid Condition Assessments and Property Inspections.</p>	<p>Ecological monitoring data indicates a trajectory for reduction in exotic plant cover over three consecutive assessments.</p>	
Activity / Progress		<p>Weed contractor engaged to undertake weed control activities across all Regional BAs throughout the year to control noxious species and stop weeds spreading into previously un-infested areas.</p> <p>In 2025 weed control targeted the following species: African lovegrass (<i>Eragrostis curvulva</i>), African olive (<i>Olea europaea</i>), Blackberry (<i>Rubus armeniacus</i> and <i>anglocandicans</i>), Blue heliotrope (<i>Heliotropium amplexicaule</i>), Blue Passionflower (<i>Passiflora caerulea</i>) Brazilian nightshade (<i>Solanum seaforthianum</i>), Bridal creeper (<i>Asparagus asparagoides</i>), Cadaghi (<i>Corymbia torelliana</i>), Castor oil (<i>Ricinus communis</i>), Cats claw creeper (<i>Dolichandra unguis-cati</i>), Creeping pear (<i>Opuntia humifusa</i>), Duranta (<i>Duranta erecta</i>), Fireweed (<i>Scenecio madagascariensis</i>), Galenia (<i>Galenia pubescens</i>), Green cestrum (<i>Cestrum parqui</i>), Jacaranda (<i>Jacaranda mimosifolia</i>), Lantana (<i>Lantana camara</i>), Mother of Millions (<i>Bryohpyllum delagonese</i>), Moth Vine (<i>Araujia sericifera</i>), Mullein (<i>Verbascum sp.</i>), Narrow-leaf cotton bush (<i>Gomphocarpus fruticosus</i>), Ochna (<i>Ochna serrulata</i>), Peppercorn Tree (<i>Schinus molle</i>), Prickly pear (<i>Opuntia stricta</i>), Queensland Wattle (<i>Acacia podalyriifolia</i>), Ragwort (<i>Senecio jacobaea</i>), Robinia (<i>Robinia pseudoacacia</i>), Silky Oak (<i>Grevillea robusta</i>), St John's wort (<i>Hypericum perforatum</i>), Sticky nightshade (<i>Solanum sisymbriifolium</i>), Sweet Briar (<i>Rosa rubiginosa</i>), Thistle (<i>Cirsium sp.</i>), Trad (<i>Tradescantia fluminensis</i>), Tree of heaven (<i>Ailanthus altissima</i>), Whiskey grass (<i>Andropogon virginicus</i>), Wild Tobacco (<i>Solanum mauritianum</i>), Willows (<i>Salix sp.</i>), Yucca (<i>Yucca aloifolia</i>).</p> <p>Rapid Condition Assessments and Property Inspections were completed in 2025.</p>		<p>Control noxious species and stop weeds spreading into previously un-infested areas.</p> <p>Undertake Rapid Condition Assessments.</p> <p>Undertake Property Inspections.</p> <p>Undertake Ecological monitoring.</p>

Conservation Actions	Year 1 to Year 4	Year 5 to Year 10 (2025 is Year 9)	Completion Criteria	Actions 2026
Pest control and monitoring				
<i>Performance Criteria</i>	<p><i>At least two control events each year for species listed in Management Plans, and any other species recorded from monitoring activities.</i></p> <p><i>All actions recorded in the Annual Report.</i></p> <p><i>Active participation in programme coordinated by Hunter Local Land Service (HLLS), this may include local control actions.</i></p> <p><i>Complete Rapid Condition Assessments and Property Inspections.</i></p>	<p><i>At least one control event each year for species listed in Management Plans, and any other species recorded from monitoring activities.</i></p> <p><i>All actions recorded in the Annual Report.</i></p> <p><i>Active participation in programme coordinated by HLLS, this may include local control actions.</i></p> <p><i>Complete Rapid Condition Assessments and Property Inspections.</i></p>	<p><i>No observed vertebrate pest or damage.</i></p> <p><i>Ecological monitoring demonstrates a trajectory to benchmark values for all attributes measured over three consecutive assessments (the average of all plots).</i></p>	
Activity / Progress		<p>In 2025 vertebrate pest contractors were engaged to undertake programmes across all Regional BAs.</p> <p>Two 1080 ground baiting programmes targeting wild dogs and foxes were undertaken in autumn and spring in conjunction with neighbouring landholders and HLLS.</p> <p>A ground shooting program was undertaken at the Goulburn River BA in March controlling five feral pigs and one fox.</p> <p>A ground shooting program was undertaken at the Bowditch Biodiversity Area in March controlling nine feral deer and one fox.</p> <p>A Noisy Miner ground shoot was undertaken at the Goulburn River BA in August under a Licence to Harm Protected Animals (Biodiversity Conservation Act 2016). The programme aims to assist the survivability of the Regent Honeyeater. The Goulburn River BA programme which is in its ninth consecutive year resulted in the control of 252 Noisy Miners over seven days.</p> <p>Aerial shoots conducted by NPWS at the Goulburn River/Seven Oaks BA's in June and August controlled 29 and 14 feral pigs respectively.</p> <p>Rapid Condition Assessments and Property Inspections were completed in 2025.</p>		<p>Participate in HLLS and NPWS Aerial Baiting/shooting programmes.</p> <p>Undertake shooting and baiting programmes.</p> <p>Undertake a control programme for Noisy Miners in the Regent Honeyeater breeding area at GRBA and Bowditch.</p> <p>Undertake Rapid Condition Assessments.</p> <p>Undertake Property Inspections.</p> <p>Undertake Ecological monitoring.</p>

Conservation Actions	Year 1 to Year 4	Year 5 to Year 10 (2025 is Year 9)	Completion Criteria	Actions 2026
Grazing				
<i>Performance Criteria</i>	<i>Grazing is conducted in accordance with the Management Plan.</i> <i>Boundary fences maintained.</i> <i>Complete Rapid Condition Assessment and Property Inspections.</i>			
Activity / Progress	No strategic grazing implemented on BAs in 2025. Rapid Condition Assessment and Property Inspections were completed in 2025. Boundary fences repaired or replaced at North Rothbury, Goulburn River and Condon View BAs in 2025.			Undertake Rapid Condition Assessments. Undertake Property Inspections. Maintenance of boundary fences.
Regional BA Bushfire Management Plan (BFMP) and monitoring				
<i>Performance Criteria</i>	<i>Actions implemented.</i> <i>Review and revise if required.</i> <i>Complete Rapid Condition Assessments and Property Inspections</i>	<i>Actions implemented.</i> <i>Review and revise if required.</i> <i>Complete Rapid Condition Assessments and Property Inspections.</i> <i>Completed ecological fire management plan.</i>	<i>All required actions of BFMP have been implemented.</i> <i>BFMP has been reviewed annually and revised if required.</i>	
Activity / Progress		BFMP reviewed and revised. Fuel load assessments were undertaken on Putty, Condon View, North Rothbury, Seven Oaks, Goulburn River and Bowditch BAs in 2025. A hazard reduction burn for the Seven Oaks BA was undertaken in May 2023, which treated approximately 90 Ha and reducing the fuel load to low. A Hazard Reduction Burn for North Rothbury BA was scheduled however conditions were outside the prescribed criteria, so the burn was rescheduled for 2026. Slashing of fire breaks was undertaken at North Rothbury and Goulburn River BAs. Rapid Condition Assessments and Property Inspections were completed in 2025.	Review BFMP. Undertake fire break slashing. Undertake annual fuel load assessments on all Regional BAs. Undertake the Hazard Reduction Burn at North Rothbury BA. Undertake Rapid Condition Assessments. Undertake Property Inspections.	

Conservation Actions	Year 1 to Year 4	Year 5 to Year 10 (2025 is Year 9)	Completion Criteria	Actions 2026
Erosion monitoring inspections and reports				
<i>Performance Criteria</i>	<i>Complete Rapid Condition Assessment and Property Inspections</i>			
Activity / Progress	Erosion areas inspected/monitored at North Rothbury, Goulburn River and Condon View BA's. Erosion repair undertaken at Bowditch BA. Rapid Condition Assessment and Property Inspections were completed in 2025.			Undertake Rapid Condition Assessment. Undertake Property Inspections. Inspect/monitor erosion areas identified at North Rothbury and Goulburn River BA's. Repair erosion area at Condon View BA.
Dam conversion and rehabilitation and monitoring				
<i>Performance Criteria</i>	<i>Prepare dam conversion plan.</i>	<i>Observed natural flow regime and no erosion.</i>	<i>All works completed.</i>	
	<i>Dam conversion complete and rehabilitation has stabilised the site.</i>	<i>Property inspections.</i>		
	Property inspections.			
Activity / Progress	Property inspections undertaken in 2025. A dam conversion plan was prepared in 2021.			Implement the dam conversion plan. Undertake Property Inspections.
Natural Regeneration and monitoring				
<i>Performance Criteria</i>	<i>Annual weed control, vertebrate pest and fire management actions implemented as per management plans.</i>		<i>Ecological monitoring demonstrates a trajectory to benchmark values for all attributes measured over three consecutive assessments (the average of all plots).</i>	
	<i>Complete Rapid Condition Assessment and Property Inspections.</i>			
Activity / Progress	Rapid Condition Assessment and Property Inspections undertaken in 2025. Actions implemented as per management plans – see above.			Implement actions as per Management plans. Undertake Rapid Condition Assessment. Undertake Property Inspections. Undertake Ecological Monitoring.

Conservation Actions	Year 1 to Year 4	Year 5 to Year 10 (2025 is Year 9)	Completion Criteria	Actions 2026
Controlled Activities				
<i>Performance Criteria</i>	<p><i>No reported incidents of prohibited actions undertaken by Yancoal, contractors, consultants or other agents of Yancoal.</i></p> <p><i>Any clearing of vegetation reported in Annual Report.</i></p> <p><i>Signage and locks (where required) maintained.</i></p> <p><i>Complete risk assessment for any recreation activities.</i></p> <p><i>All occupants of residents compliant with requirements of the MP.</i></p> <p><i>No Cultural Heritage sites knowingly disturbed and any protective barricading maintained.</i></p> <p><i>Damaged and unwanted fences removed.</i></p> <p><i>All Property Inspections completed.</i></p>			
Activity / Progress	<p>There was one incident at North Rothbury BA in 2024, which involved unauthorised access by a neighbouring resident. The resident realigned a section of the boundary fence and also used a small excavator to push up ground cover in the area. The neighbour was provided with a letter advising that no future unauthorised access was permitted and if any actions were deemed required, that these needed to be communicated to Yancoal MTW for follow up as required. The boundary fence was repaired and reinstated along its correct alignment.</p> <p>There was one reported incident of prohibited actions undertaken in 2025.</p> <p>Evidence of unauthorised vegetation clearing (two trees felled and removed) at the North Rothbury Biodiversity Area was observed by a contractor on 5 August 2025 whilst undertaking weed control activities at the North Rothbury Biodiversity Area. A follow up inspection identified that an additional tree had been cut through but had not yet fallen because it was “hung up” in an adjacent tree. Monitoring cameras and additional signage was subsequently installed. The incident was reported to DPHI and DCCEEW.</p> <p>Cultural Heritage sites are barricaded.</p> <p>Signage and locks maintained.</p> <p>Regular property inspections were undertaken in 2025.</p>			<p>Undertake Property Inspections.</p> <p>Repair Cultural Heritage barricading where required.</p>

4 MONITORING ACTIVITIES

The following table provides a summary of the monitoring activities undertaken as detailed in the management plans. Monitoring reports and results are available on the Biodiversity Offset Portal.

Table 4 Monitoring Activity Summary

Monitoring	2025	Date/s	Completed by
Bird Assemblage	N/A	July – November 2024, next due July – October 2026	Future Fauna
Habitat Restoration	N/A	September – November 2024, next due September – November 2026	Mosaic Ecology and Leaf ERC
Rapid Condition Assessment	X	November/December 2025 next due September – November 2026	Franks Fencing (Land Management Advisor) and Rural & Environmental Management
Property Inspection	X	April/May/November/December 2025, next due April/November 2026	Mosaic Ecology

4.1 Bird assemblages monitoring

Bird assemblage monitoring was not required to be undertaken during 2025. The results from the 2024 Bird Assemblage monitoring were presented in the 2024 Annual Report for Regional Offsets. The next Bird Assemblage monitoring is scheduled for July 2026.

4.2 Habitat restoration monitoring

Habitat Restoration monitoring was not required to be undertaken during 2025. The results from the last round of Habitat Restoration monitoring conducted in 2024 were presented in the 2024 Annual Report for Regional Offsets. The next Habitat Restoration monitoring is scheduled for September 2026.

5 PROGRESS IN ATTAINING CONSERVATION OBJECTIVES AGAINST KEY PERFORMANCE INDICATORS

The primary conservation objectives for the Regional BAs are to:

- enhance landscape connectivity within the surrounding landscape;
- improve fauna movement and flora dispersal opportunities within the surrounding landscape;
- increased condition and area of suitable habitats for threatened fauna species within protected reserves, specifically for the Regent Honeyeater and Swift Parrot;
- provide refuge and habitat for local fauna populations and transient species, particularly threatened species; and
- enhance network of protected vegetation within the Hunter Valley.

Table 3 details the progress in attainment of the long-term conservation objectives. The baseline data presented is from the first monitoring completed in 2014. The Rapid Condition Assessment (RCA) monitoring results indicate that the vegetation and habitat health is being maintained in comparison to the baseline data **Table 5 – Table 10**.

6 ADAPTIVE MANAGEMENT

No new environmental risks have been identified during the reporting period.

Table 5 Goulburn River BA: Biodiversity Values and KPIs

Biodiversity Value	Nested Conservation Value(s)	Description and baseline metric	KPI	Progress comment
Woodland (MZ2, MZ3, MZ4, MZ5 and MZ7)		Total area: 1,169ha RCA Average Health rating 17.6/20	Maintain or increase area, connectivity and habitat condition over 10 years	RCA Average health rating 2015 – 17/20 2016 – 17.1/20
	Fauna Habitat	Moderate potential habitat for Swift Parrot and Regent Honeyeater	improved habitat condition over 10 years	2017 – 17.1/20 2018 – 18.1/20 2019 – 18.4/20 2020 - *17.5/20 2021 - *17.4/20 2022 - *18.2/20 2023 – 17.8/20 2024 – 17.4/20 2025 – 17.3/20 Area and health maintained *Some sites were inaccessible due to high water levels in the Goulburn River.

Table 6 Bowditch BA: Biodiversity Values and KPIs

Biodiversity Value	Nested Conservation Value(s)	Description and baseline metric	KPI	Progress comment
Woodland (MZ1, MZ2 and MZ4)		Total area: 602ha RCA Average Health rating 18.2/20	Observed and measured increase or maintained RCA scores over 10 years	RCA Average Health rating 2015 – 18/20 2016 – 18.4/20
	Fauna Habitat	Moderate potential habitat for Swift Parrot and Regent Honeyeater	Maintain or increase the condition and extent of habitat and bird usage over 10 years	2017 – 17.1/20 2018 – 17.7/20 2019 – 17.7/20 2020 – 18.1/20 2021 – 18.3/20 2022 – 18.7/20 2023 – 18.3/20 2024 – 18.8/20 2025 – 18.9/20 Area and health maintained

Table 7 Seven Oaks BA: Biodiversity Values and KPIs

Biodiversity Value	Nested Conservation Value(s)	Description and baseline metric	KPI	Progress comment
Woodland (MZ3, MZ4 and MZ5)		Total area: 519ha RCA Average Health rating 18.0/20	Observe an increase in area, connectivity and habitat condition over 10 years	RCA Average Health rating 2016 – 18/20 2017 – 17.3/20
	Fauna Habitat	Moderate potential habitat for Swift Parrot and Regent Honeyeater	Maintain or increase the condition and extent of habitat and bird usage over 10 years	2018 – 17.6/20 2019 – 17.6/20 2020 - 18.2/20 2021 – 18.2/20 2022 – 18.2/20 2023 – 18/20 2024 – 18.2/20 2025 – 18.2/20 Area and health maintained

Table 8 Condon View BA: Biodiversity Values and KPIs

Biodiversity Value	Nested Conservation Value(s)	Description and baseline metric	KPI	Progress comment
Woodland (MZ2 and MZ4)		Total area: 515ha RCA Average Health rating 19.2/20	Maintain or increase area, connectivity and habitat condition over 10 years	RCA Average Health rating 2016 – 20/20 2017 – 18.2/20
	Fauna Habitat	Moderate potential habitat for Swift Parrot and Regent Honeyeater	Maintain or increase the condition and extent of habitat and bird usage over 10 years	2018 – 18.6/20 2019 – 18.6/20 2020 – 19/20 2021 – 19.3/20 2022 – 19.3/20 2023 – 19.7/20 2024 – 19.7/20 2025 – 19.3/20 Area and health generally maintained

Table 9 Putty BA: Biodiversity Values and KPIs

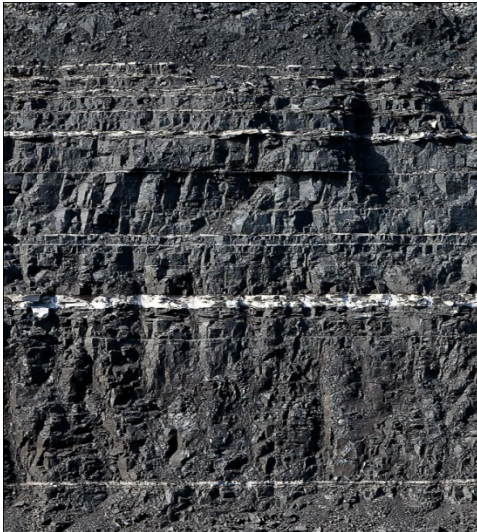
Biodiversity Value	Nested Conservation Value(s)	Description and baseline metric	KPI	Progress comment
Woodland (MZ2, MZ3 and MZ4)		Total area: 383ha RCA Average Health rating 17.2/20	Observe an increase in area, connectivity and habitat condition over 10 years	RCA Average Health rating 2016 – 17.3/20 2017 – 17.6/20
	Fauna Habitat	Moderate potential habitat for Swift Parrot and Regent Honeyeater	Maintain or increase the condition and extent of habitat and bird usage over 10 years	2018 – 17.8/20 2019 – 15.6/20 2020 – 16.2/20 2021 – 16.8/20 2022 – 17/20 2023 – 17.3/20 2024 – 18/20 2025 – 18.8/20 (Bushfire in July and December 2019 reduced the health rating)

Table 10 North Rothbury BA: Biodiversity Values and KPIs

Biodiversity Value	Nested Conservation Value(s)	Description and baseline metric	KPI	Progress comment
Woodland (MZ1 and MZ2)		Total area: 41ha RCA Average Health rating 18.6/20	Observe an increase in area, connectivity and habitat condition over 10 years	RCA Average Health rating 2016 – 18/20 2017 – 18.2/20
	Fauna Habitat	Moderate potential habitat for Swift Parrot and Regent Honeyeater	Maintain or increase the condition and extent of habitat and bird usage over 10 years	2018 – 19/20 2019 – 18.7/20 2020 – 19/20 2021 – 19/20 2022 – 19/20 2023 – 18.75/20 2024 – 18.25/20 2025 – 18.25/20 Area and health maintained

ATTACHMENT B:

Local Offset Management Plan Annual Report 2025



Local Biodiversity Areas

Annual Report 2025

Annual report for the period from January to December 2025, for activities described in the Management Plans for all Local Warkworth Mining Limited offsets including:

- Southern Biodiversity Area (including the Putty Road Offset Area)
- Northern Biodiversity Area

Table of Contents

1	Introduction	3
2	Location and landholder details.....	3
3	Summary of activities – 2025.....	7
3.1	Summary of climatic conditions	7
4	Monitoring Activities.....	19
4.1	Bird assemblages monitoring	19
4.2	Habitat restoration monitoring	19
5	Progress in attaining Conservation Objectives against Key Performance Indicators	20
6	Adaptive Management	20

Revision

Version No.	Version Details	Document Status	Date
1.0	Environment and Community Advisor	Final	30/03/2026

1 INTRODUCTION

This annual report is a requirement of the management plans for all Local Warkworth Mining Limited offsets for the 2025 reporting period (1 January 2025 to 31 December 2025).

The report provides a summary of the key management activities completed across the biodiversity offset located within the Southern (includes the Putty Road Offset Area) and Northern Biodiversity Areas (BAs).

The management plans describe the conservation management strategies and monitoring to achieve, and measure improvement and protection of the offset's biodiversity values. It is a compliance requirement of the Commonwealth and NSW environmental approvals to implement the management plans.

The Local OMP (November 2014) was prepared to satisfy the consent requirements for the New South Wales (NSW) Warkworth Mine Development Approval (DA 300-9-2002i) and replaces the former *Flora and Fauna Management Plan* and *Warkworth Sands Woodland (WSW) Offset Area OMP*. In November 2015 the NSW Warkworth Continuation Project Approval (SSD-6464) was granted providing both NSW and Commonwealth approval for the same disturbance area. Phase 2 of the EPBC2009/5081 action also commenced on 16 February 2016. In response to the granting of these new approvals, new Management Plans for the Southern and Northern BA have been prepared to satisfy the Commonwealth approval EPBC2009/5081 and the NSW consent (SSD-6464), replacing both the Local and Putty Road OMPs.

The Biodiversity Offset Portal contains the supporting documentation for this report, including photo point monitoring. Access to the portal is restricted, relevant regulators have been provided with login details; please contact Mount Thorley Warkworth should you require assistance.

2 LOCATION AND LANDHOLDER DETAILS

The locations of the local BAs are shown in **Figure 1**, **Figure 2** and **Figure 3**, details are provided in **Table 1**.

Table 1 Local Biodiversity Areas

Biodiversity Area	Land Owner	Area (ha)	Offset Area (ha)	Location
Northern BA	Coal & Allied Operations Pty Ltd	344	341	Approximately 7km north of the Warkworth Mining Lease and in close proximity to the Hunter Valley Operations. Accessed via Comleroi Road.
Southern BA (including the Putty Road Offset)	Coal & Allied Operations Pty Ltd Miller Pohang Coal Company Pty Ltd Warkworth Mining Limited	1,023	986	Immediately west and north of Warkworth Mine. Intersected by Putty Road in the south, and Wallaby Scrub Road and the Golden Highway in the north.

Location of the Warkworth Mining Limited Biodiversity Areas

Annual Compliance Report

Figure 1

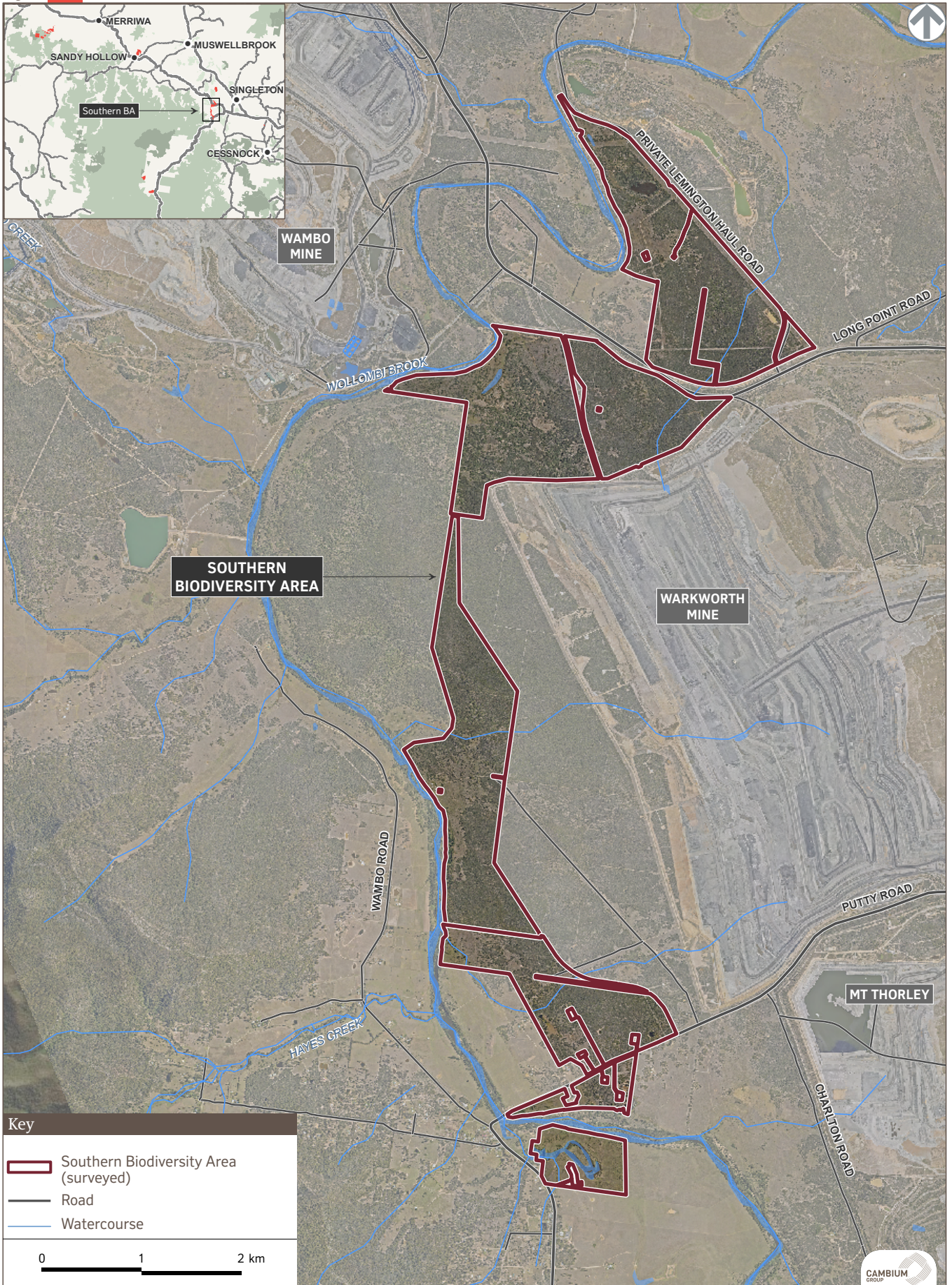


DISCLAIMER
 Cambium Group Pty Ltd disclaims all liability for all claims, expenses, losses, damages, and costs any person/company may incur as a result of their/its reliance on the accuracy or completeness of this document or its capability to achieve any purpose. © Cambium Group Pty Ltd 2019

Southern Biodiversity Area

Annual Compliance Report

Figure 2

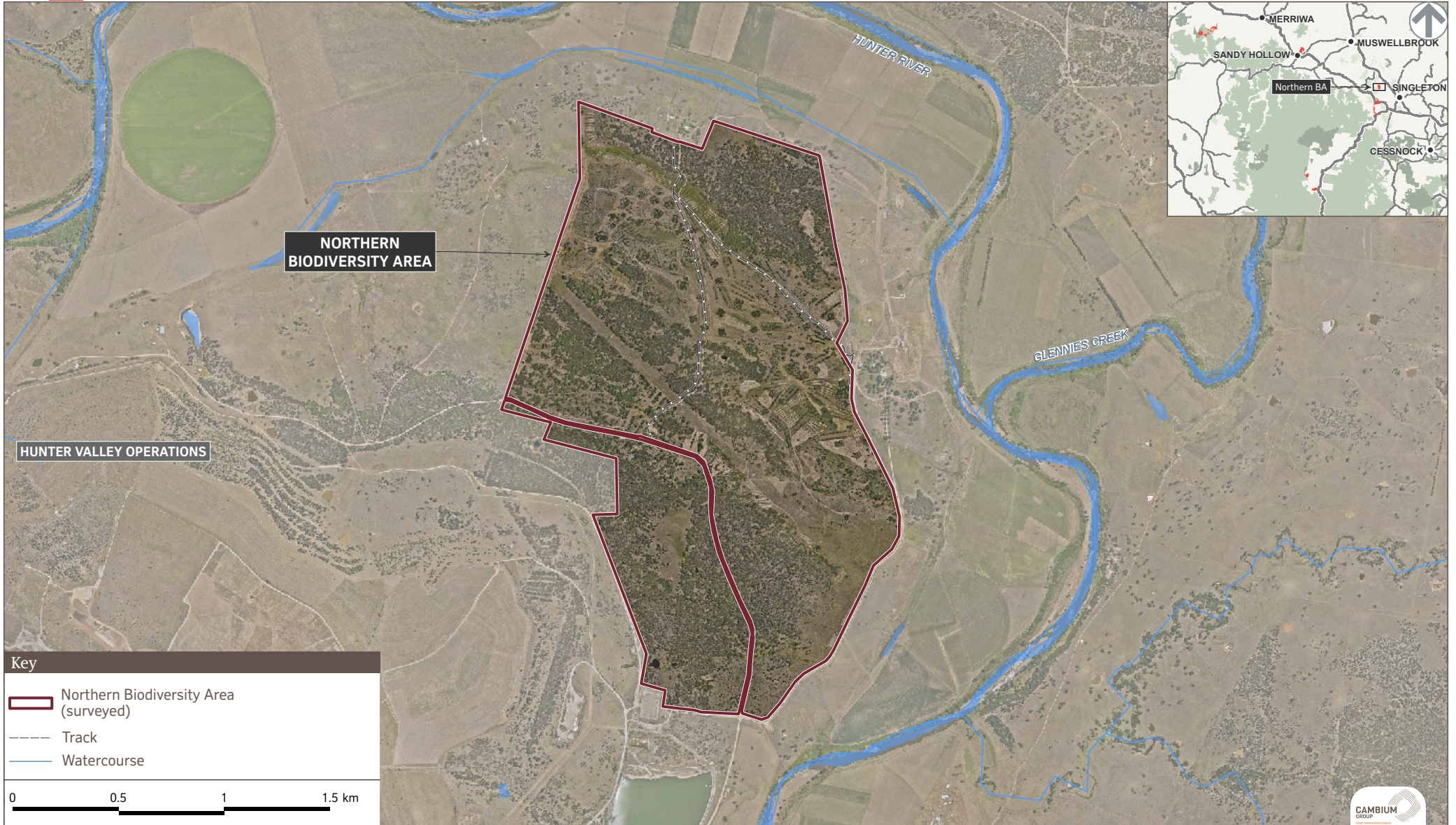


DISCLAIMER
Cambium Group Pty Ltd disclaims all liability for all claims, expenses, losses, damages, and costs any person/company may incur as a result of their/its reliance on the accuracy or completeness of this document or its capability to achieve any purpose. © Cambium Group Pty Ltd 2026.

Northern Biodiversity Area

Annual Compliance Report

Figure 3



3 SUMMARY OF ACTIVITIES – 2025

Table 2 provides a summary of the activities undertaken during the reporting period (Year 8) and the progress in attaining the Performance Criteria for the key Conservation Management Strategies in the management plans.

3.1 Summary of climatic conditions

Figure 4 and **Figure 5** show the monthly actual rainfall compared to the long-term average for the Northern BA and Southern BA for the reporting period. In 2025, rainfall was above average for March, April, May, August and September, with close to or below average for remaining months. The Southern BA received ~754mm of rainfall which was ~56mm above the long-term average and the Northern BA received ~744mm which was ~68mm above the long-term average.

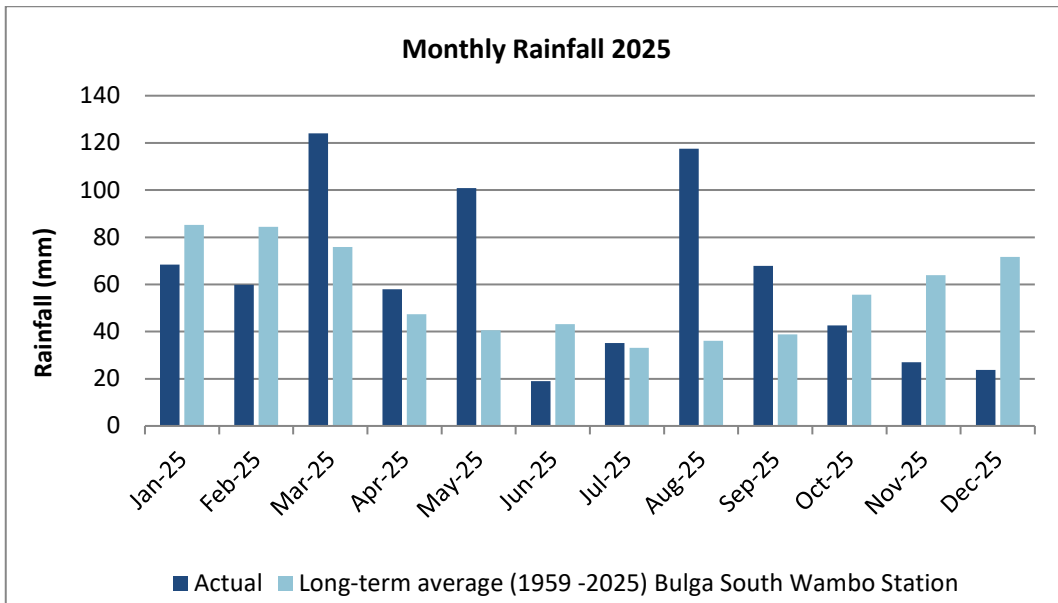


FIGURE 4 MONTHLY RAINFALL – NORTHERN BA

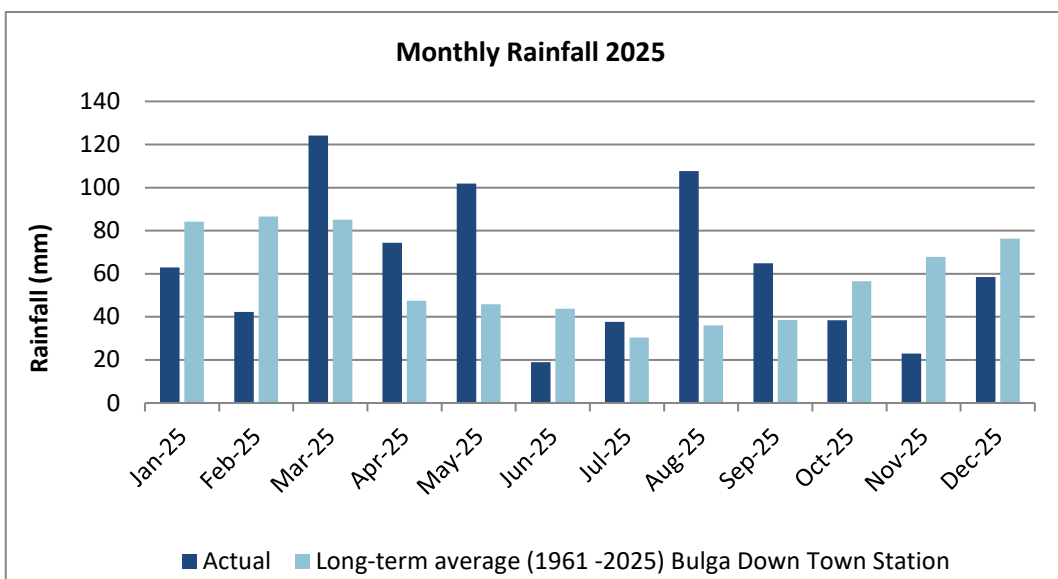


FIGURE 5 MONTHLY RAINFALL – SOUTHERN BA

Table 2 Summary of progress against Performance Criteria

Conservation Actions	Year 1 to Year 5	Year 6 to Year 10 (2025 is Year 9)	Completion Criteria	Actions 2026
ACTIVE RESTORATION				
Southern BA WSW planting (40ha)				
<i>Performance Criteria</i>	<i>Collection of seed. Plant propagation. Tubestock planted. Completed survival assessment.</i>	<i>Biennial ecological monitoring completed</i>	<i>Ecological monitoring demonstrates a trajectory toward the reference site or the benchmark values for HU872 for all attributes measured over the three consecutive assessments (the average of all plots).</i>	
Activity / Progress	Seed collection and plant propagation was undertaken. In 2017 1ha of WSW tubestock was planted in the Southern BA. In 2018 14 ha of WSW tubestock was planted in the Southern BA including replanting the sand quarry and old orchard areas. In 2019 maintenance of planting areas was undertaken and included infill planting of over 9,000 tubestock. In 2020 maintenance of planting areas was undertaken and included infill planting of over 2,000 tubestock. Survival assessments were completed for all planting areas.	Seed collection and plant propagation was undertaken. In 2022 planting of tubestock included 3,000 WSW tubestock in the grassland area of Southern BA1 and infill planting of 4,400 tubestock throughout the Southern BA. Ecological monitoring undertaken in 2022 and 2024. In 2023 planting of tubestock included 800 WSW tubestock in the grassland area of Southern BA1. In 2024, WSW planting progressed with ~5000 m ³ of WSW sand stripped from ahead of mining at MTW and hauled to the Southern BA3. This WSW sand was spread, seeded with native grasses and then 4,000 WSW tubestock were planted into the planting areas. In 2025, WSW infill planting included 960 tubestock in Southern BA3. Survival assessment completed for planting areas.		Seed collection. Undertake survival assessments. Undertake Ecological monitoring. Review and revise Southern Biodiversity Area Management Plan, to include updates to the supplementary planting section.

Conservation Actions	Year 1 to Year 5	Year 6 to Year 10 (2025 is Year 9)	Completion Criteria	Actions 2026
Southern BA CHGBIW planting (240ha)				
<i>Performance Criteria</i>	<i>Collection of seed. Plant propagation. Tubestock planted. Completed survival assessment.</i>	<i>Biennial ecological monitoring completed.</i>	<i>Ecological monitoring demonstrates a trajectory toward the reference site or the NSW Biometric HU817 for all attributes measured over three consecutive assessments (the average of all plots).</i>	
Activity / Progress	<p>Seed collection and plant propagation was undertaken.</p> <p>Restoration activities included tubestock planting of Central Hunter Grey Box – Ironbark Woodland in the Southern BA.</p> <p>In 2017, 89 ha of the Southern BA was planted with over 13,000 tubestock planted into rip lines.</p> <p>In 2018 118 ha of the Southern BA was planted with over 20,000 tubestock planted into rip lines.</p> <p>In 2019 maintenance of planting areas was undertaken and included infill planting of over 10,000 tubestock.</p> <p>In 2020 maintenance of planting areas was undertaken and included infill planting of over 3,800 tubestock.</p> <p>In 2021 maintenance of planting areas was undertaken and included infill planting of 9,000 tubestock.</p> <p>The site preparation for these sites included ripping by dozer and weed control. To mimic nature the tree species were planted at a spacing of 5 -10m and shrubs species planted in clumps as commonly found with understory species within this vegetation type. All plants were watered, fertilised and protected with a tree guard.</p> <p>Survival Assessments were completed for all planting areas.</p>	<p>Seed collection and plant propagation was undertaken.</p> <p>In 2022 maintenance of planting areas was undertaken and included infill planting of 7,000 tubestock.</p> <p>In 2024 maintenance of planting areas was undertaken and included infill planting of 4,780 tubestock.</p> <p>Ecological monitoring undertaken in 2022 and 2024.</p> <p>Survival assessment completed for planting areas.</p>	<p>Seed collection.</p> <p>Undertake Ecological monitoring.</p> <p>Review and revise Southern Biodiversity Area Management Plan, to include updates to the supplementary planting section.</p>	

Conservation Actions	Year 1 to Year 5	Year 6 to Year 10 (2025 is Year 9)	Completion Criteria	Actions 2026
Southern BA ROF planting (26ha)				
<i>Performance Criteria</i>	<i>Collection of seed. Plant propagation. Tubestock planted.</i>		<i>Survival assessment greater than 70%</i>	
	<i>Completed survival assessment.</i>			
Activity / Progress	<p>Seed collection and plant propagation was undertaken.</p> <p>Restoration activities included planting River Oak Forest in the Southern BA.</p> <p>In 2018, 11ha of the Southern BA was planted with over 2,000 tubestock planted into rip lines.</p> <p>In 2019 maintenance of planting areas was undertaken and included infill planting of over 800 tubestock.</p> <p>In 2020 maintenance of planting areas was undertaken and included infill planting of 3,200 tubestock.</p> <p>In 2021 maintenance of planting areas was undertaken and included infill planting of 4,000 tubestock. The site preparation for this site included ripping by dozer and weed control. To mimic nature the tree species were planted at a spacing of 5 -10m and shrubs species planted in clumps as commonly found with understory species within this vegetation type. All plants were watered, fertilised and protected with a tree guard.</p> <p>Survival Assessments were completed for all planting areas.</p>	<p>In 2022 maintenance of planting areas was undertaken and included infill planting of 5,000 tubestock.</p> <p>In 2024 maintenance of planting areas was undertaken and included infill planting of 1,460 tubestock.</p> <p>Seed collection and plant propagation was undertaken.</p> <p>Survival assessment completed for planting areas.</p>		<p>Seed collection.</p> <p>Undertake Ecological monitoring.</p> <p>Review and revise Southern Biodiversity Area Management Plan, to include updates to the supplementary planting section.</p>

Conservation Actions	Year 1 to Year 5	Year 6 to Year 10 (2025 is Year 9)	Completion Criteria	Actions 2026
Northern BA WSW planting (195ha)				
<i>Performance Criteria</i>	<i>Collection of seed. Plant propagation. Tubestock planted. Completed survival assessment.</i>	<i>Biennial ecological monitoring completed.</i>	<i>Ecological monitoring demonstrates a trajectory toward the reference site or the benchmark values for HU872 for all attributes measured over three consecutive assessments (the average of all plots).</i>	
<i>Activity / Progress</i>	<p>Seed collection and plant propagation was undertaken.</p> <p>Restoration activities included planting Warkworth Sands Woodland in the Northern BA.</p> <p>In 2014 work commenced to restore over 80 hectares of Warkworth Sands Woodland, this involved the planting of seedlings and the relocation of sand salvaged ahead of mining activities.</p> <p>In 2017, 10,800 tubestock were planted into 44 50x50m patches. Topsoil from ahead of mining operations at MTW was salvaged and hauled to the Biodiversity Area prior to planting commencing. In total Ten patches received 50mm of topsoil over the whole patch, two received 50mm of topsoil over half the patch, 12 received 25mm of topsoil over the patch and ten received no topsoil. Holes were dug for tubestock, either by hand or auger and all plants were watered, fertilised and protected with a tree guard.</p> <p>In 2018 maintenance of planting areas was undertaken and included infill planting of over 8,000 tubestock.</p> <p>In 2019 maintenance of planting areas was undertaken and included infill planting of over 3,000 tubestock.</p> <p>In 2020 planting progressed at the Northern BA with 9,112m³ of WSW sand stripped ahead of mining at MTW and hauled to the Northern Biodiversity Area. 5,480m³ of this WSW sand was spread into strips and seeded with native grasses to increase the groundcover diversity then planted with 4,500 tubestock</p>	<p>Seed collection and plant propagation was undertaken.</p> <p>In 2022 maintenance of planting areas was undertaken and included infill planting of 3,400 WSW tubestock.</p> <p>Ecological monitoring undertaken in 2022 and 2024.</p> <p>Planting of 10,000 Warkworth Sands Woodland tube stock was delayed due to access issues transporting sand into the planting areas, this was rescheduled for 2023.</p> <p>In 2023, WSW planting progressed with ~5,000 m³ of WSW sand stripped from ahead of mining at MTW and hauled to the Northern Biodiversity Area. This WSW sand was spread into strips and more broadly in some areas, seeded with native grasses and then 10,000 WSW tubestock were planted into the planting areas.</p> <p>In 2024, WSW planting progressed with ~13,000 m³ of WSW sand stripped from ahead of mining at MTW and hauled to the Northern Biodiversity Area. This WSW sand was spread into strips and more broadly in some areas, seeded with native grasses and then 15,100 WSW tubestock were planted into the planting areas.</p> <p>In 2025, WSW planting progressed with ~11,000 m³ of WSW sand stripped from ahead of mining at MTW and hauled to the Northern Biodiversity Area. This WSW sand was spread into strips and</p>		<p>Seed collection and plant propagation.</p> <p>Undertake track maintenance to allow sand to be transported to the planting areas.</p> <p>Spread topsoil from ahead of mining operations at MTW into the Northern BA planting areas.</p> <p>Undertake planting of Warkworth Sands Woodland tube stock.</p> <p>Undertake Ecological monitoring.</p> <p>Undertake survival assessments.</p>

Conservation Actions	Year 1 to Year 5	Year 6 to Year 10 (2025 is Year 9)	Completion Criteria	Actions 2026
	<p>In 2021 WSW planting progressed with 3,632 m³ of sand from ahead of mining at MTW spread into strips and seeded with native grasses then planted with 1,500 tubestock.</p> <p>Survival Assessments were completed for all planting areas</p> <p>A separate Ecological monitoring program was undertaken in 2021 to capture the WSW planting areas.</p>	<p>more broadly in some areas, seeded with native grasses and then 9,800 WSW tubestock were planted into the planting areas.</p> <p>Survival Assessments were completed for planting areas.</p>		
Northern BA CHGBIW planting (23ha)				
<i>Performance Criteria</i>	<p><i>Collection of seed. Plant propagation. Tubestock planted.</i></p> <p><i>Completed survival assessment.</i></p>	<p><i>Biennial ecological monitoring completed.</i></p>	<p><i>Ecological monitoring demonstrates a trajectory toward the reference site or the NSW Biometric HU817 for all three attributes measured over three consecutive assessments (the average of all plots).</i></p>	
Activity / Progress	<p>Restoration activities included tubestock planting of Central Hunter Grey Box – Ironbark Woodland in the Northern BA.</p> <p>In 2017, 6ha of the Northern BA was planted with 2,780 tubestock planted into rip lines. The site preparation for this site included ripping by dozer and weed control. To mimic nature the tree species were planted at a spacing of 5 -10m and shrubs species planted in clumps as commonly found with understory species within this vegetation type. All plants were watered, fertilised and protected with a tree guard.</p> <p>In 2018 maintenance of planting areas was undertaken and included infill planting.</p> <p>Survival Assessments were completed for all planting areas.</p>	<p>Ecological monitoring undertaken in 2022 and 2024.</p>		<p>Seed collection.</p> <p>Undertake Ecological monitoring.</p>

Conservation Actions	Year 1 to Year 5	Year 6 to Year 10 (2025 is Year 9)	Completion Criteria	Actions 2026
PASSIVE RESTORATION				
Weed control and monitoring				
<i>Performance Criteria</i>	<p>At least two weed control events each year for species listed in Table 14 of Management Plans and other weeds recorded from monitoring activities.</p> <p>All actions recorded in Annual Report.</p> <p>Complete Rapid Condition Assessments and Property Inspections.</p>	<p>At least one weed control event each year for species listed in Table 14 of Management Plans and other weeds recorded from monitoring activities.</p> <p>All actions recorded in Annual Report.</p> <p>Complete Rapid Condition Assessments and Property Inspections.</p>	<p>Ecological monitoring data indicates a trajectory for reduction in exotic plant cover over three consecutive assessments.</p>	
Activity / Progress	<p>Weed contractor engaged to undertake weed control activities at the Northern and Southern BA throughout the year.</p> <p>Rapid Condition Assessment and Property Inspections were completed.</p>	<p>In 2025 weed control targeted the following species:</p> <p>African boxthorn (<i>Lycium ferocissimum</i>), African lovegrass (<i>Eragrostis curvulva</i>), African olive (<i>Olea europaea</i>), Ashwagandha (<i>Withania somnifera</i>), Balloon vine (<i>Cardiospermum grandiflorum</i>), Bidens (<i>Bidens pilosa</i>), Blue heliotrope (<i>Heliotropium amplexicaule</i>), Brazilian nightshade (<i>Solanum seafortianum</i>), Bridal Creeper (<i>Asparagus asparagoides</i>), Carrion Flower (<i>Orbea variegata</i>), Castor Oil Plant (<i>Ricinus communis</i>), Cats Claw Creeper (<i>Dolichandra unguis-cati</i>), Common Pear (<i>Opuntia stricta</i>), Coolatai grass (<i>Hyparrhenia hirta</i>), Creeping pear (<i>Opuntia humifusa</i>), Fireweed (<i>Senecio madagascariensis</i>), Fleabane (<i>Erigeron bonariensis</i>), Galenia (<i>Galenia pubescens</i>), Golden wreath wattle (<i>Acacia saligna</i>), Green cestrum (<i>Cestrum parqui</i>), Guinea Grass (<i>Megathyrsus maximus</i>), Inkweed (<i>Phytolacca octandra</i>), Khaki Weed (<i>Alternanthera pungens</i>), Kikuyu (<i>Cenchrus clandestinus</i>), Lantana (<i>Lantana camara</i>), Mother of millions (<i>Bryophyllum delagoense</i>), Moth vine (<i>Araujia sericifera</i>), Mullein (<i>Verbascum sp.</i>), Narrow Leaf Cotton Bush (<i>Gomphocarpus fruticosus</i>), Paterson's</p>		<p>Control noxious species and stop weeds spreading into previously un-infested areas.</p> <p>Undertake Rapid Condition Assessments.</p> <p>Undertake Property Inspections.</p>

Conservation Actions	Year 1 to Year 5	Year 6 to Year 10 (2025 is Year 9)	Completion Criteria	Actions 2026
		<p>curse (<i>Echium plantagineum</i>), Peppercorn Tree (<i>Schinus molle</i>), Potato vine (<i>Solanum seaforthianum</i>), Prickly pear (<i>Opuntia stricta</i>), Rhodes grass (<i>Chloris gayana</i>), Scotch Thistle (<i>Onopordum acanthium</i>), Sowthistle (<i>Sonchus olearius</i>), Spear Thistle (<i>Cirsium vulgare</i>), Stinking roger (<i>Tagetes minuta</i>), Telegraph weed (<i>Heterotheca grandiflora</i>), Tiger Pear (<i>Opuntia aurantiaca</i>), Toadflax (<i>Linaria vulgaris</i>), Twiggy Mullein (<i>Verbascum virgatum</i>), Tree of Heaven (<i>Ailanthus altissima</i>), Turkey rhubarb (<i>Rumex sagittatus</i>), Whiskey Grass (<i>Andropogon virginicus</i>), White Cedar (<i>Melia azedarach</i>)</p> <p>Rapid condition assessments and property inspections were completed.</p>		
Pest control and monitoring				
<i>Performance Criteria</i>	<p>At least two control events each year for species listed in Table 20 of Management Plans, and any other species recorded from monitoring activities.</p> <p>Active participation in programme coordinated by Hunter Local Land Service (HLLS), this may include local control actions.</p> <p>Complete biannual inspection and report all works completed and actions for next year.</p>	<p>At least one control events each year for species listed in Table 17 of Management Plans, and any other species recorded from monitoring activities.</p> <p>Active participation in programme coordinated by HLLS, this may include local control actions.</p> <p>Complete biannual inspection and report all works completed and actions for next year.</p>	<p>No observed vertebrate pest or damage.</p> <p>Ecological monitoring demonstrates a trajectory to benchmark values for all attributes measured over three consecutive assessments (the average of all plots).</p>	
Activity / Progress	<p>Vertebrate pest contractor was engaged to undertake programmes across the Southern and Northern BA.</p> <p>Biannual property inspections were undertaken.</p>	<p>In 2022 a vertebrate pest contractor was engaged to undertake programmes across the Southern and Northern BA.</p> <p>In 2023, 1080 ground baiting programmes were undertaken targeting wild dogs and foxes in autumn and spring, across the Southern and Northern BA. Both programmes were coordinated with HLLS and neighbouring landholders across the broader Hunter Valley area.</p>		<p>Undertake vertebrate pest management including 1080 ground baiting programmes scheduled for autumn and spring to target wild dogs and foxes.</p> <p>Undertake pig trapping and baiting program across MTW and the Southern and Northern BA's.</p> <p>Undertake biannual property Inspections.</p>

Conservation Actions	Year 1 to Year 5	Year 6 to Year 10 (2025 is Year 9)	Completion Criteria	Actions 2026
		<p>In 2023, a trapping program was undertaken targeting pigs in Spring, across MTW and the Southern BA.</p> <p>In 2024, 1080 ground baiting programmes were undertaken targeting wild dogs and foxes in autumn and spring, across the Southern and Northern BA. Both programmes were coordinated with HLLS and neighbouring landholders across the broader Hunter Valley area.</p> <p>In 2024, a ground baiting program and a trapping/ground baiting program were undertaken in Autumn and Winter respectively, targeting pigs across MTW and the Southern and/or Northern BA's.</p> <p>In 2025, 1080 ground baiting programmes were undertaken targeting wild dogs and foxes in autumn and spring, across the Southern and Northern BA. Both programmes were coordinated with HLLS and neighbouring landholders across the broader Hunter Valley area.</p> <p>In 2025, trapping and ground baiting programs were undertaken in January and Winter, targeting pigs across MTW and the Southern and Northern BA's.</p> <p>Biannual property inspections were undertaken.</p>		
Grazing				
<i>Performance Criteria</i>	<p><i>Grazing is conducted in accordance with the Management Plan.</i></p> <p><i>Boundary fences maintained.</i></p> <p><i>Complete Rapid Condition Assessment and Property Inspections.</i></p>			
Activity / Progress	<p>No strategic grazing was undertaken in the BAs in 2025.</p> <p>Boundary fence repairs/replacements undertaken in the Southern and Northern BA.</p> <p>Property Inspections and Rapid Condition Assessments were undertaken in 2025.</p>			<p>Undertake Property Inspections.</p> <p>Undertake Rapid Condition Assessments.</p> <p>Maintain boundary fences.</p>

Conservation Actions	Year 1 to Year 5	Year 6 to Year 10 (2025 is Year 9)	Completion Criteria	Actions 2026
Bushfire Management Plan (BFMP), Ecological burn and monitoring				
<i>Performance Criteria</i>	<i>Actions implemented.</i> <i>Review and revise if required.</i> <i>Complete Rapid Condition Assessments and Property Inspections.</i>	<i>Actions implemented.</i> <i>Review and revise if required.</i> <i>Complete Rapid Condition Assessments and Property Inspections.</i> <i>Completed ecological fire management plan for MZ1, MZ3, MZ5, MZ7, MZ8 and MZ9.</i>	<i>All required actions of BFMP have been implemented.</i> <i>BFMP has been reviewed annually and revised if required.</i>	
Activity / Progress	BFMP reviewed. Firebreaks were slashed. Property Inspections and Rapid Condition Assessments were undertaken.	BFMP reviewed and revised. Firebreaks were slashed at the Southern BA in 2023, 2024 and 2025. Areas were also slashed at Northern BA related to planting preparation activities, but which also served as firebreaks. Property Inspections and Rapid Condition Assessments were undertaken in 2022, 2023, 2024 and 2025.		Review BFMP. Undertake Property Inspections. Undertake Rapid Condition Assessments. Undertake fuel load assessments. Slash firebreaks.
Infrastructure Improvements and monitoring				
<i>Performance Criteria</i>	<i>Completed GDP for all infrastructure improvement actions.</i> <i>Maintenance of tracks and fences completed at least every 3 years.</i> <i>Property Inspections undertaken.</i>			.
Activity / Progress	GDP's completed for WSW planting program and access road maintenance in the Northern BA in 2025. GDP completed for fence repairs in the Southern BA in 2025. Boundary fences maintained, and Property Inspections undertaken in 2025.			Maintain tracks and boundary fences. Undertake Property Inspections
Erosion monitoring inspections and reports				
<i>Performance Criteria</i>	<i>Complete Rapid Condition Assessment and Property Inspections</i>			
Activity / Progress	Rapid Condition Assessments and Property Inspections undertaken in 2025. An erosion repair was undertaken at Southern BA5.			Undertake Rapid Condition Assessments. Undertake Property Inspections. Monitor/repair erosion area identified in Northern BA

Conservation Actions	Year 1 to Year 5	Year 6 to Year 10 (2025 is Year 9)	Completion Criteria	Actions 2026
Dam conversion and rehabilitation and monitoring				
<i>Performance Criteria</i>	<i>Prepare dam conversion plan. Dam conversion complete and rehabilitation has stabilised the site. Property inspections.</i>	<i>Observed natural flow regime and no erosion. Property inspections.</i>	<i>All works completed.</i>	
Activity / Progress	Property inspections undertaken. Dam conversion plan prepared.	Property inspections undertaken.		Implement actions from dam conversion plan. Undertake Property Inspections.
Natural Regeneration and monitoring				
<i>Performance Criteria</i>	<i>Annual weed control, vertebrate pest and fire management actions implemented as per management plans. Complete Rapid Condition Assessments and Property Inspections.</i>		<i>Ecological monitoring demonstrates a trajectory to benchmark values for all attributes measured over three consecutive assessments (the average of all plots).</i>	
Activity / Progress	Actions implemented in 2025 as per management plans. Rapid Condition Assessments and Property Inspections undertaken in 2025.			Undertake Property Inspections. Undertake annual weed control. Undertake Rapid Condition Assessments.
Controlled Activities				
<i>Performance Criteria</i>	<i>No reported incidents of prohibited actions undertaken Yancoal, contractors, consultants or other agents of Yancoal. Any clearing of vegetation reported in Annual Report. Signage and locks (where required) maintained. Complete risk assessment for any recreation activities. All occupants of residents compliant with requirements of the MP. No Cultural Heritage sites knowingly disturbed and any protective barricading maintained. Damaged and unwanted fences removed. All Property Inspections completed.</i>			
Activity / Progress	In 2017 trespassing and illegal tree clearing and timber getting within the Southern Biodiversity Area resulted in felling approximately 40 full sized trees and 100 small trees. This unauthorised activity was reported to both Department of Environment and Energy and Department of Planning and Environment in October 2017. Internal fences and waste were removed from the Southern BA areas to be planted in 2018 and sections of boundary fence at the Northern BA and Southern BA were			Undertake Property Inspections.

Conservation Actions	Year 1 to Year 5	Year 6 to Year 10 (2025 is Year 9)	Completion Criteria	Actions 2026
	<p>repaired and replaced where needed. New Biodiversity Area signs were installed in 2017. In 2023, sections of boundary fence at the Northern BA and Southern BA were repaired and replaced where needed. In 2024 there were no reported incidents or prohibited actions undertaken on the Biodiversity Areas. In 2024, sections of boundary fence and a gate at the Southern BA were repaired and replaced where needed. In 2025, sections of the western boundary fence at the Northern BA were replaced/relocated, so that fenced along the property boundary. Sections of boundary fence and gates at Southern BA were replaced and/or repaired where needed. Regular property inspections were undertaken.</p>			

4 MONITORING ACTIVITIES

The following table provides a summary of the monitoring activities undertaken as detailed in the MP. Monitoring reports and results are available on the Biodiversity Offset Portal.

Table 3 Monitoring Activity Summary

Monitoring	2025	Date/s	Completed by
Bird Assemblage	N/A	July – November 2024, next due July – October 2026	Future Fauna
Habitat Restoration	N/A	September - November 2024, next due September – November 2026	Mosaic Ecology and Leaf ERC
Rapid Condition Assessment	X	November and December 2025, next due September – November 2026	Franks Fencing (Land Management Advisor) and Rural and Environmental Management
Property Inspection	X	April/May/November 2025, next due April/November 2026	Environment and Community Advisor

4.1 Bird assemblages monitoring

Bird assemblage monitoring was not required to be undertaken during 2025. The results from the 2024 bird assemblage monitoring were presented in the 2024 Annual Report for Local Offsets.

The next bird assemblage monitoring is to be undertaken from July 2026.

4.2 Habitat restoration monitoring

Habitat restoration monitoring was not required to be undertaken during 2025. The results from the last round of habitat restoration monitoring conducted in 2024 were presented in the 2024 Annual Report for Local Offsets.

The next habitat restoration monitoring is to be undertaken from September 2026.

5 **PROGRESS IN ATTAINING CONSERVATION OBJECTIVES AGAINST KEY PERFORMANCE INDICATORS**

The primary conservation objectives for the local offset areas (including the Putty Road Offset) are to:

- enhance biodiversity values across the BAs;
- protect the WSW Offset Area and Putty Road Offset Area under a legally binding conservation covenant;
- increase the condition of WSW and Ironbark EECs and observe a transition from grassland to woodland;
- enhance habitat and foraging opportunities for the woodland birds; and
- contribute to and enhance the existing network of protected vegetation within the Hunter Valley.

Table 2 indicates the progress in attainment of the long-term conservation objectives, the ecological monitoring data supports the continued implementation of the conservation management strategies.

6 **ADAPTIVE MANAGEMENT**

No new environmental risks have been identified during the reporting period.

Table 4 Local Offset Areas Biodiversity Values and Key Performance Indicators

Area	Biodiversity Value	Description and baseline metric	KPI	Progress comment
Southern BA	Ironbark Woodland	Total area: 446.7ha RCA Average Health rating 18.0/20 (MZ1)	Extent and condition of woodland over 10 years.	RCA results: 2014 – 18/20 2015 – 18/20 2016 – 18/20 2017 – 18.5/20 2018 – 18.5/20 2019 – 18/20 2020 – 17.5/20 2021 – 17.5/20 2022 – 18/20 2023 – 18/20 2024 – 18/20 2025 – 17.5/20 Area and health maintained.
	Ironbark Grassland	Total area: 258.4ha	Transition of grassland to woodland.	2025 monitoring supports continued implementation of the conservation management strategies.
WSW		Total area: 137ha RCA Average Health rating 17.0/20 (MZ3)	Extent and condition of woodland over 10 years.	RCA results: 2014 – 16/20 2015 – 18/20 2016 – 17/20 2017 – 18/20 2018 – 18/20 2019 – 18/20 2020 – 17/20 2021 – 17/20 2022 – 16/20 2023 – 16/20 2024 – 17/20 2025 – 16/20 Area and health maintained.

Area	Biodiversity Value	Description and baseline metric	KPI	Progress comment
	WS Grassland	Total area:40.3ha	Transition of grassland to woodland.	2025 monitoring supports continued implementation of the conservation management strategies.
	Hunter Lowland Red Gum Forest	Total area: 32.4ha RCA Average Health rating 18.4/20 (MZ5)	Extent and condition over 10 years.	RCA results: 2014 – 17/20 2015 – 19/20 2016 – 19/20 2017 – 19/20 2018 – 18.5/20 2019 – 18.5/20 2020 – 19/20 2021 - * 2022 - * 2023 – 18/20 2024 – 18/20 2025 – 18/20 *Sites were inaccessible due to flooding
	Fauna Habitat	Low potential habitat	Observe maintenance or increase habitat condition rating over 10 years	2025 monitoring supports continued implementation of the conservation management strategies.

Area	Biodiversity Value	Description and baseline metric	KPI	Progress comment
Northern BA	Ironbark Woodland	Total area: 103.6ha RCA Average Health rating 18.6/20 (MZ1)	Extent and condition of woodland over 10 years.	RCA results: 2014 – 18/20 2015 – 18.5/20 2016 – 19.5/20 2017 – 19.5/20 2018 – 18/20 2019 – 18/20 2020 – 19/20 2021 – 19/20 2022 – 18.5/20 2023 - 18.5/20 2024 – 18/20 2025 – 18.5/20 Area and health maintained.
	Ironbark Grassland	Total area: 23.1ha	Transition of grassland to woodland.	2025 monitoring supports continued implementation of the conservation management strategies.
	WSW	Total area: 19.5ha RCA Average Health rating 18.5/20 (MZ3)	Maintain woodland extent over 10 years.	RCA results: 2014 – 17.5/20 2015 – 18/20 2016 – 19/20 2017 – 19/20 2018 – 18.5/20 2019 – 18.5/20 2020 – 19/20 2021 – 18.5/20 2022 – 18.5/20 2023 – 18.5/20 2024 – 18.5/20 2025 – 19/20 Area and health maintained.

Area	Biodiversity Value	Description and baseline metric	KPI	Progress comment
	WS Grassland	Total area: 194.5	Transition of grassland to woodland	2025 monitoring supports continued implementation of the conservation management strategies.
	Fauna Habitat		Observe maintenance or increase habitat condition rating over 10 years	2025 monitoring supports continued implementation of the conservation management strategies.

ATTACHMENT C:

EPBC 2009/5081 Compliance Register

(Condition 17)

EPBC 2009/5081 Compliance Register (Condition 17)

Condition	Documents	Date due (as per Approval)	Date submitted	Date approved	Date Plan on website	Date review due
2	Putty Road Offset Management Plan	13-Apr-2014	14-Apr-2014	04-Jul-2014	31-Jul-2014	within 12 months of the approval of the Phase 2 Offset (refer Condition 5)
5	Southern BA Management Plan	17-Feb-2017	15-Feb-2017 14-Dec-2017 (revised version) 13-Nov-2020 (revised version) 28-Jul-2022 (revised version)	16-Feb-2018 (DoEE) 30-Apr-2018 (DPE) 20-Jul-2021 (DPIE) 12-Aug-2022 (DPE)	28-Feb-2019 22-Jul-2021 10-Nov-2022	12-Aug- 2026
6	Re-Establishment Management Plan	03-Feb-2015	02-Feb-2015	Not yet received	N/A	within 12 months of the Commencement of Construction of Phase 2
7	Putty, Seven Oaks, Goulburn River, Bowditch and North Rothbury Biodiversity Area Management Plans	17-Feb-2017	15-Feb-2017 14-Dec-2017 (revised versions) 28-Jul-2022 (revised version)	16-Feb-2018 (DoEE) 30-Apr-2018 (DPE) 12-Aug-2022 (DPE)	28-May-2018 10-Nov-2022	12-Aug- 2026
	Northern Management Plan		15-Feb-2017 14-Dec-2017 (revised version) 13-Nov-2020 (revised version) 28-Jul-2022 (revised version)	16-Feb-2018 (DoEE) 25-Sep-2018 (DPE) 20-Jul-2021 (DPIE) 12-Aug-2022 (DPE)	27-Sep-2018 22-Jul-2021 10-Nov-2022	12-Aug- 2026
	Condon View Biodiversity Area Management Plan		15-Feb-2017 10-Oct-2017 (revised version) 28-Jul-2022 (revised version)	12-Aug-2022 (DPE)	4-Nov-2022	12-Aug- 2026
8	Water Management Plan	03-Aug-2014	15-Sep-2014 (following approval by NSW regulator 10-Sep-2014) 30-Apr-2020 (revised version). 28-Jul-2020 (revised version)	20-Sep-2018 (DPE) 13-May-2020 (DP&E) 15-Nov-2021 (DPIE)	27-Sep-2018 13-May-2020 3-Feb-2022 (most recent version)	31-Jul-2026

Condition	Documents	Date due (as per Approval)	Date submitted	Date approved	Date Plan on website	Date review due
11	Mine Site Rehabilitation Plan (Phase 1)	03-Feb-2015	02-Feb-2015	Not yet received	N/A	within 12 months of the Commencement of Construction of Phase 2
	Mine Site Rehabilitation Plan (Phase 2)	17-Feb-2017	23-Jan-2019 (following approval by NSW regulator 14-Dec-2018)	11-Jun-2019 (DPE) 11-Mar-2020 (DAWE)	N/A	N/A
			18-Nov-2021	30-Nov-2021 (RR)	19-Jan-2022	2-Aug-2022
			28-Jul-2022	Not yet received	11-Aug-2022	Within 30 days of approval of a rehabilitation outcome document.
			30-Jan-2024	Not yet received	30-Jan-2024	As above
29-Jan-2026	Not yet received	23-Jan-2026	As above			
12	Mine Closure Plan	6 months prior to mine closure	N/A	N/A	N/A	N/A
15	Compliance Report	03-May-2015 (and annually thereafter)	28-Apr-2015	N/A	28-Apr-2015	N/A
		03-May-2016	03-May-2016	N/A	03-May-2016	N/A
		03-May-2017	01-Jun-2017	N/A	10-Jun-2017	N/A
		03-May-2018	03-May-2018	N/A	03-May-2018	N/A
		03-May-2019	03-May-2019	N/A	03-May-2019	N/A
		03-May-2020	03-May-2020	N/A	03-May-2020	N/A
		03-May-2021	03-May-2021	N/A	03-May-2021	N/A
		03-May-2022	03-May-2022	N/A	03-May-2022	N/A
		03-May-2023	03-May-2023	N/A	03-May-2023	N/A
		03-May-2024	03-May-2024	N/A	03-May-2024	N/A
		03-May-2025	02-May-2025	N/A	02-May-2025	N/A
03-May-2026	01-May-2026	N/A	01-May-2026	N/A		