



Monthly Environmental Monitoring Report

Yancoal Mount Thorley Warkworth

February 2026

CONTENTS

1.0	INTRODUCTION.....	4
2.0	AIR QUALITY.....	4
2.1	Meteorological Monitoring.....	4
2.1.1	Rainfall.....	4
2.1.2	Wind Speed and Direction.....	4
2.2	Depositional Dust.....	6
2.3	Suspended Particulates.....	6
2.3.1	HVAS PM ₁₀ Results.....	6
2.3.2	TSP Results.....	7
2.3.3	Real Time PM ₁₀ Results.....	7
2.3.4	Real Time Alarms for Air Quality.....	7
3.0	WATER QUALITY.....	9
3.1	Surface Water.....	9
3.2	HRSTS Discharge.....	9
3.3	Groundwater Monitoring.....	9
4.0	BLAST MONITORING.....	9
4.1	Blast Monitoring Results.....	9
5.0	NOISE.....	13
5.1	Attended Noise Monitoring Results.....	13
5.1.1	WML Noise Assessment.....	13
5.1.2	MTO Noise Assessment.....	14
5.1.3	NPfl Low Frequency Assessment.....	15
5.2	Noise Management Measures.....	18
6.0	OPERATIONAL DOWNTIME.....	18
7.0	REHABILITATION.....	19
8.0	ENVIRONMENTAL INCIDENTS.....	19
9.0	COMPLAINTS.....	19
	Appendix A: Meteorological Data.....	21

Figures

Figure 1: Rainfall Trend YTD	4
Figure 2: Charlton Ridge Wind Rose – February 2026	4
Figure 3: Air Quality Monitoring Locations	5
Figure 4: Depositional Dust – February 2026	6
Figure 5: Individual PM ₁₀ Results – February 2026	6
Figure 6: Annual Average PM ₁₀ – February 2026	6
Figure 7: Annual Average Total Suspended Particulates – February 2026	7
Figure 8: Real Time PM ₁₀ daily 24hr average (line graphs) and YTD annual average (column graphs) – February 2026	8
Figure 9: Abbey Green Blast Monitoring Results – February 2026	10
Figure 10: Bulga Village Blast Monitoring Results – February 2026	10
Figure 11: Putty Road MTIE Blast Monitoring Results – February 2026	10
Figure 12: Wollemi Peak Road Blast Monitoring Results – February 2026	10
Figure 13: Wambo Road Blast Monitoring Results – February 2026	11
Figure 14: Warkworth Blast Monitoring Results – February 2026	11
Figure 15: MTW Blast Monitoring Location Plan	12
Figure 16: Noise Monitoring Location Plan	17
Figure 17: Operational Downtime by Equipment Type – February 2026	18
Figure 18: Rehabilitation YTD – February 2026	19

Tables

Table 1: Monthly Rainfall MTW	4
Table 2: Blasting Limits	9
Table 3: L _{Aeq, 15 minute} Warkworth Impact Assessment Criteria – February 2026	13
Table 4: L _{A1, 1 minute} Warkworth - Impact Assessment Criteria – February 2026	13
Table 5: L _{Aeq, 15minute} Mount Thorley - Impact Assessment Criteria – February 2026	14
Table 6: L _{A1, 1Minute} Mount Thorley - Impact Assessment Criteria – February 2026	14
Table 7: Warkworth Low Frequency Noise Assessment – February 2026	15
Table 8: Mount Thorley Operations Low Frequency Noise Assessment – February 2026	16
Table 9: Supplementary Attended Noise Monitoring Data – February 2026	18
Table 10: Complaints Summary YTD	20
Table 11: Meteorological Data – Charlton Ridge Meteorological Station – February 2026	22

Revision History

Version No.	Version Details	Date
1.0	Final	30/4/2026

1.0 INTRODUCTION

This report has been compiled to provide a monthly summary of environmental monitoring results for Mount Thorley Warkworth (MTW). This report includes all monitoring data collected for the period 1 February to 28 February 2026.

2.0 AIR QUALITY

2.1 Meteorological Monitoring

Meteorological data is collected at MTW's 'Charlton Ridge' meteorological station (refer to **Figure 3**).

2.1.1 Rainfall

Rainfall for the reporting period is summarised in **Table 1**. The year-to-date monthly rainfall totals, 2026 monthly rainfall totals and historical average monthly rainfall trend are shown in **Figure 1**.

Table 1: Monthly Rainfall MTW

2026	Monthly Rainfall (mm)	Cumulative Rainfall (mm)
February	35.6	94.2

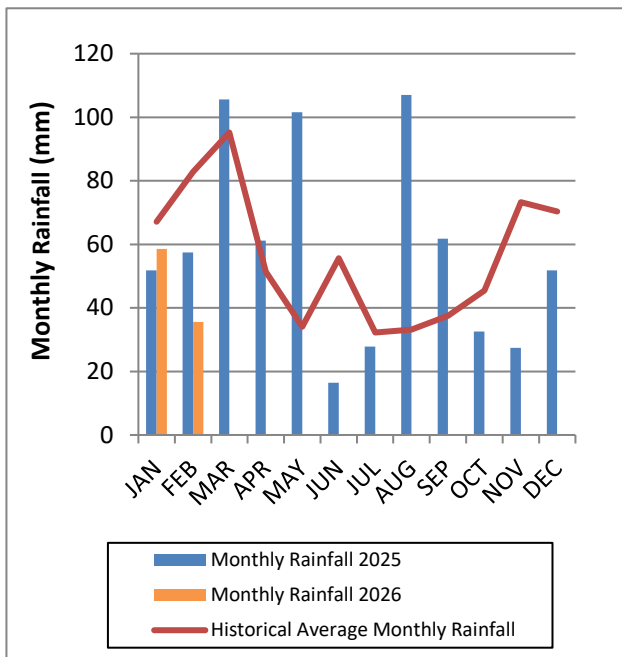


Figure 1: Rainfall Trend YTD

Note: The historical average monthly rainfall is calculated from 2007 to 2025 monthly totals.

2.1.2 Wind Speed and Direction

Winds from the Northwest were dominant during the reporting period as shown in **Figure 2**.

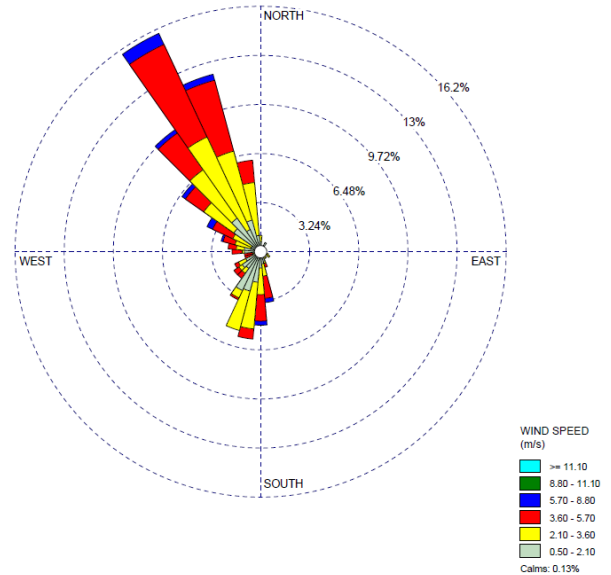


Figure 2: Charlton Ridge Wind Rose – February 2026

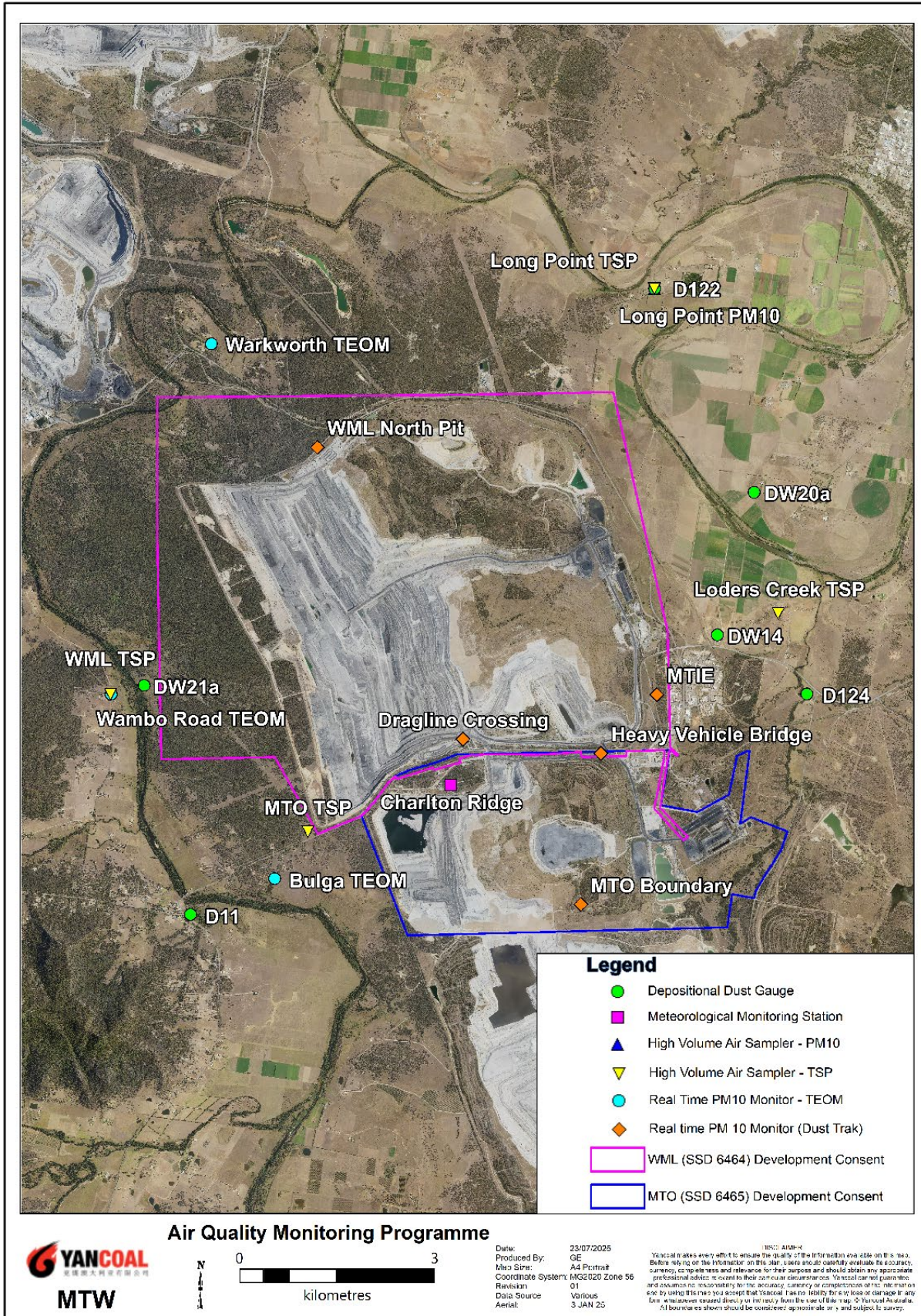


Figure 3: Air Quality Monitoring Locations

2.2 Depositional Dust

To monitor air quality, MTW operates and maintains a network of six depositional dust gauges, situated on private and mine owned land surrounding MTW.

Figure 4 displays insoluble solids results from depositional dust gauges during the reporting period compared against the year-to-date average and the annual impact assessment criteria.

An annual assessment of MTW's compliance with the Long-Term Impact Assessment Criteria will be provided in the 2026 Annual Review Report.

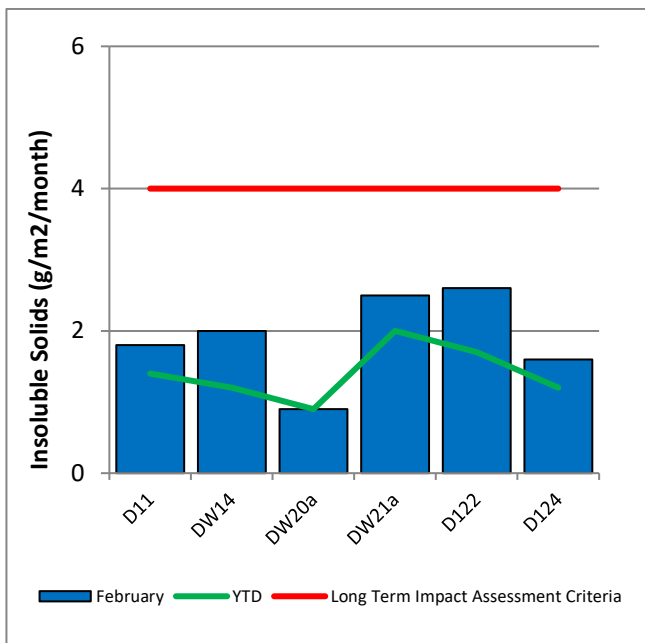


Figure 4: Depositional Dust – February 2026

2.3 Suspended Particulates

Suspended particulates are measured by a network of High Volume Air Samplers (HVAS) measuring Total Suspended Particulates (TSP) and Particulate Matter <10µm (PM₁₀). The location of these monitors can be found in Figure 3. Each HVAS was run for 24 hours on a six-day cycle in accordance with EPA requirements.

2.3.1 HVAS PM₁₀ Results

Figure 5 shows the individual PM₁₀ results at each monitoring station against the short-term impact assessment criteria of 50µg/m³.

A sample from the Long Point HVAS system was unable to be collected on the scheduled run date of 6 February 2026 due to power supply issues. This was resolved prior to the subsequent run date.

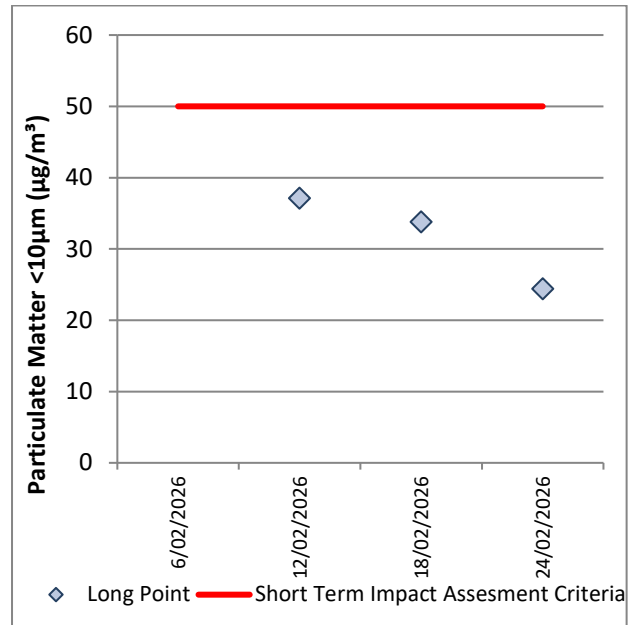


Figure 5: Individual PM₁₀ Results – February 2026

Figure 6 shows the annual average PM₁₀ result against the long-term impact assessment criteria.

An assessment of MTW's compliance with the Long-Term Impact Assessment Criteria will be provided in the 2026 Annual Review Report.

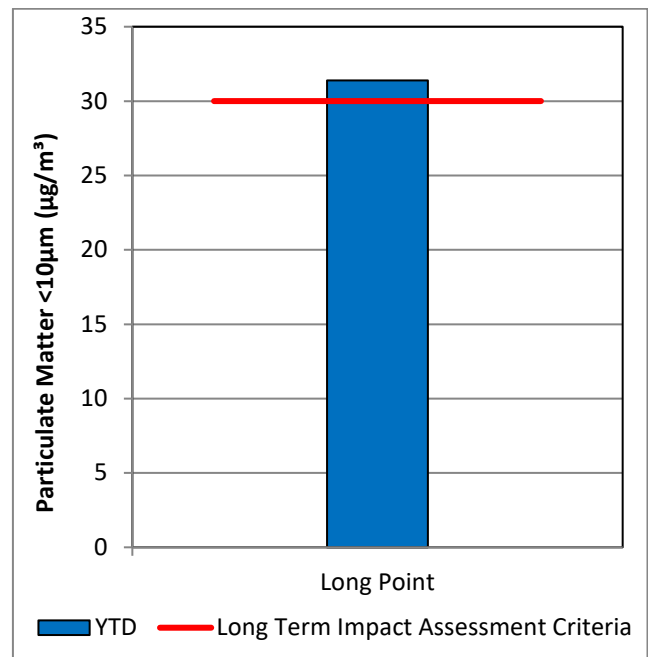


Figure 6: Annual Average PM₁₀ – February 2026

2.3.2 TSP Results

Figure 7 shows the annual average TSP results compared against the long-term impact assessment criteria of 90µg/m³.

An assessment of MTW’s compliance with the Long-Term Impact Assessment Criteria will be provided in the 2026 Annual Review Report.

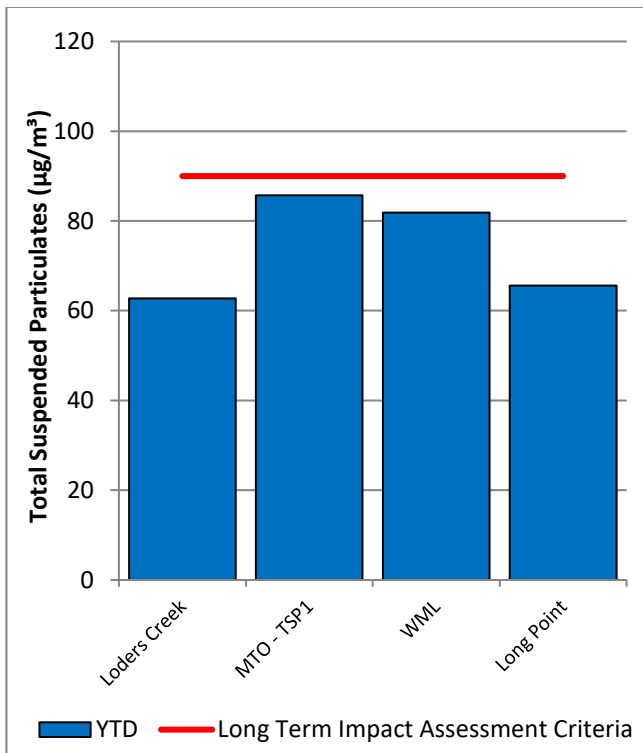


Figure 7: Annual Average Total Suspended Particulates – February 2026

2.3.3 Real Time PM₁₀ Results

MTW maintains a network of real time PM₁₀ monitors. The real time air quality monitoring stations continuously log information and transmit data to a central database, generating internal alerts when particulate matter levels exceed internal trigger limits.

Results for real time dust sampling are shown in Figure 8, including the daily 24-hour average PM₁₀ result and the annual PM₁₀ average.

On 1 February 2026, the Wambo Road TEOM Data measurement (63.8 ug/m³) was assessed for MTW’s potential contribution based on meteorological conditions and background PM₁₀ levels on the day resulting in a maximum estimated contribution of 20.39 ug/m³. Accordingly, no further action is required (as per the approved Air Quality Monitoring Programme).

On 1 February 2026, the Warkworth TEOM Data measurement (64.3 ug/m³) was assessed for MTW’s potential contribution based on meteorological conditions and background PM₁₀ levels on the day resulting in a maximum estimated contribution of 23.6 ug/m³. Accordingly, no further action is required (as per the approved Air Quality Monitoring Programme).

On 6 February 2026, the Warkworth TEOM Data measurement (60.6 ug/m³) was assessed for MTW’s potential contribution based on meteorological conditions and background PM₁₀ levels on the day resulting in a maximum estimated contribution of 19.7 ug/m³. Accordingly, no further action is required (as per the approved Air Quality Monitoring Programme).

On 9 February 2026, the Warkworth TEOM Data measurement (56.1 ug/m³) was assessed for MTW’s potential contribution based on meteorological conditions and background PM₁₀ levels on the day resulting in a maximum estimated contribution of 20.8 ug/m³. Accordingly, no further action is required (as per the approved Air Quality Monitoring Programme).

On 12 February 2026, the Bulga TEOM Data measurement (50.1 ug/m³) was assessed for MTW’s potential contribution based on meteorological conditions and background PM₁₀ levels on the day resulting in a maximum estimated contribution of 14.9 ug/m³. Accordingly, no further action is required (as per the approved Air Quality Monitoring Programme).

2.3.4 Real Time Alarms for Air Quality

During February, the real time monitoring system generated 143 automated air quality related alerts, including 34 alerts for adverse meteorological conditions and 109 alerts for elevated PM₁₀ levels.

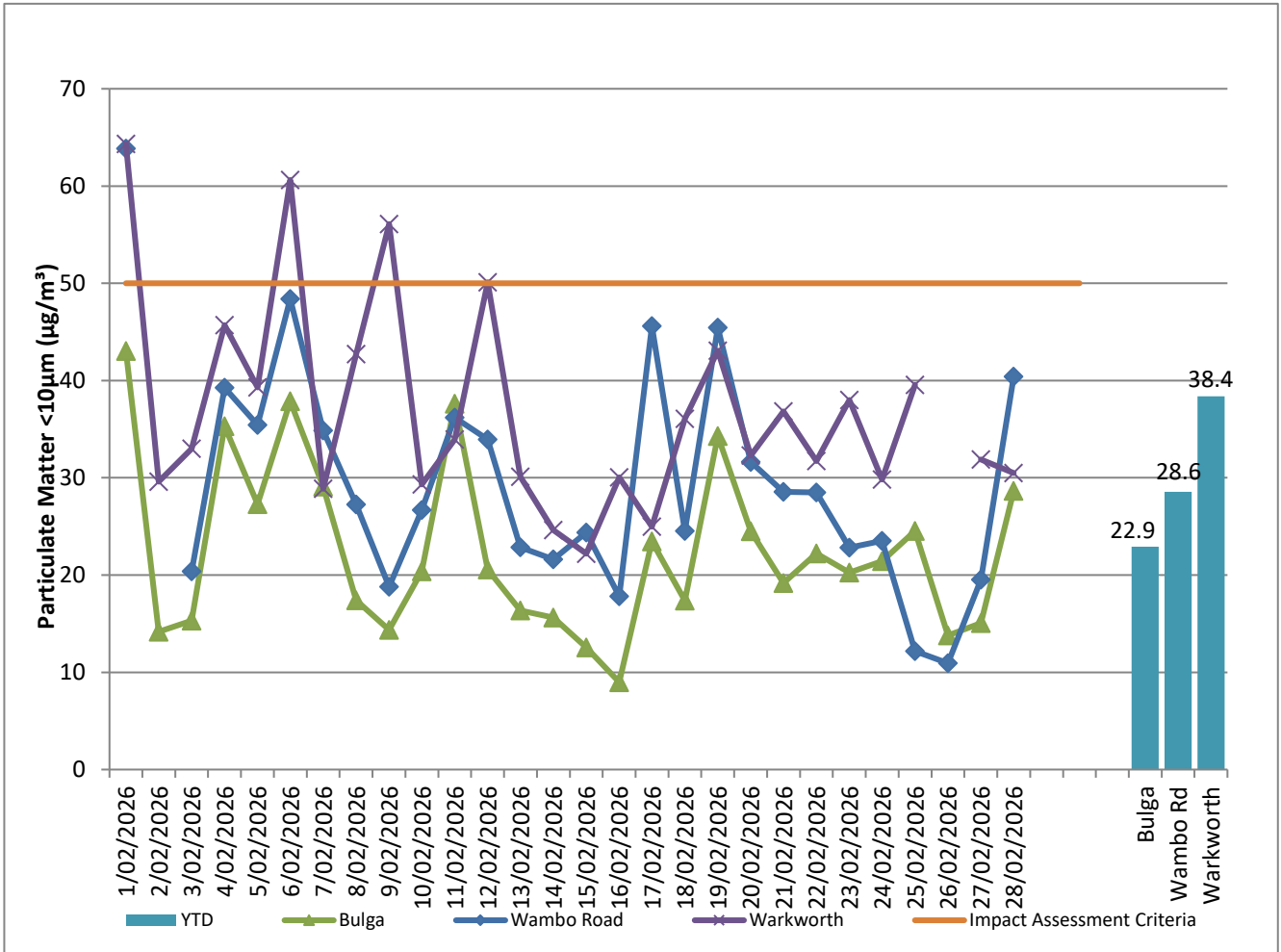


Figure 8: Real Time PM₁₀ daily 24hr average (line graphs) and YTD annual average (column graphs) – February 2026

3.0 WATER QUALITY

MTW maintains a network of surface water and groundwater monitoring sites.

3.1 Surface Water

Monitoring is conducted at mine site dams and surrounding natural watercourses.

Surface water courses are sampled on a monthly or quarterly sampling regime. Water quality is evaluated through the parameters of pH, Electrical Conductivity (EC) and Total Suspended Solids (TSS). The Hunter River and the Wollombi Brook are sampled both upstream and downstream of mining operations, to record background water quality and to monitor the potential impact of mining on the river system. Other Hunter River tributaries are also monitored.

Results of monitoring are reported quarterly, next available in the March 2026 report.

3.2 HRSTS Discharge

MTW participates in the Hunter River Salinity Trading Scheme (HRSTS), allowing discharge from licensed discharge points located at Dam 1N and Dam 9S. Discharges can only take place subject to HRSTS regulations.

MTW did not undertake HRSTS discharges in February.

3.3 Groundwater Monitoring

Groundwater monitoring is undertaken on a quarterly basis in accordance with the MTW Groundwater Monitoring Programme.

Groundwater results are reported quarterly, next available in the March 2026 report.

4.0 BLAST MONITORING

MTW have a network of six blast monitoring units. These are located at nearby privately owned residences and function as regulatory compliance monitors.

The location of these monitors can be found in **Figure 15**.

4.1 Blast Monitoring Results

During February 2026, 18 blasts were initiated at MTW. **Figure 9** to **Figure 14** show the blast monitoring results for the reporting period against the impact assessment criteria. The criteria are summarised in **Table 2**.

Table 2: Blasting Limits

Airblast Overpressure (dB(L))	Comments
115	5% of the total number of blasts in a 12 month period at WML or MTO
120	0%
Ground Vibration (mm/s)	Comments
5	5% of the total number of blasts in a 12 month period at WML or MTO
10	0%

During the reporting period no blasts exceeded the 115dB(L) threshold for Airblast overpressure. One blast exceeded the 5mm/s criteria for ground vibration (5.25mm/s) at the Bulga Village monitoring location.

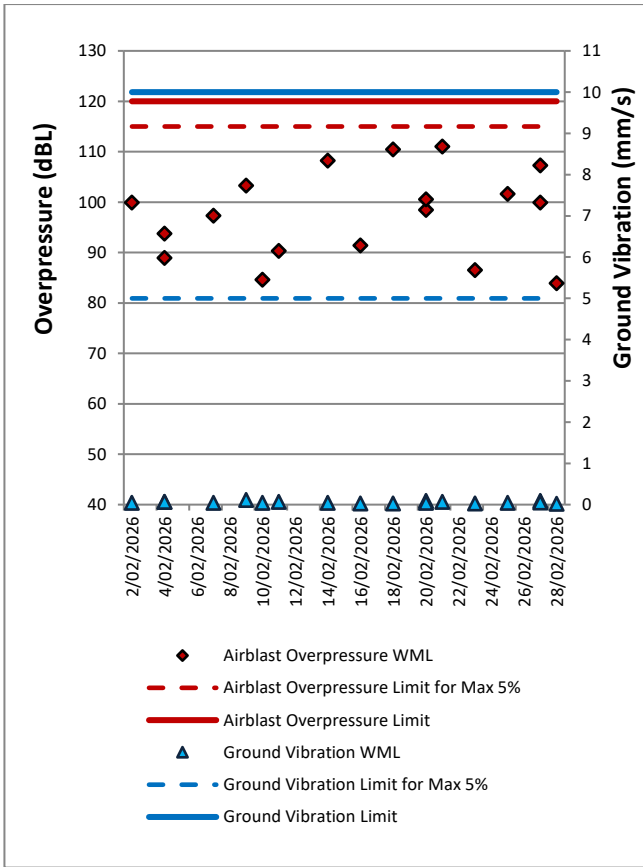


Figure 9: Abbey Green Blast Monitoring Results – February 2026

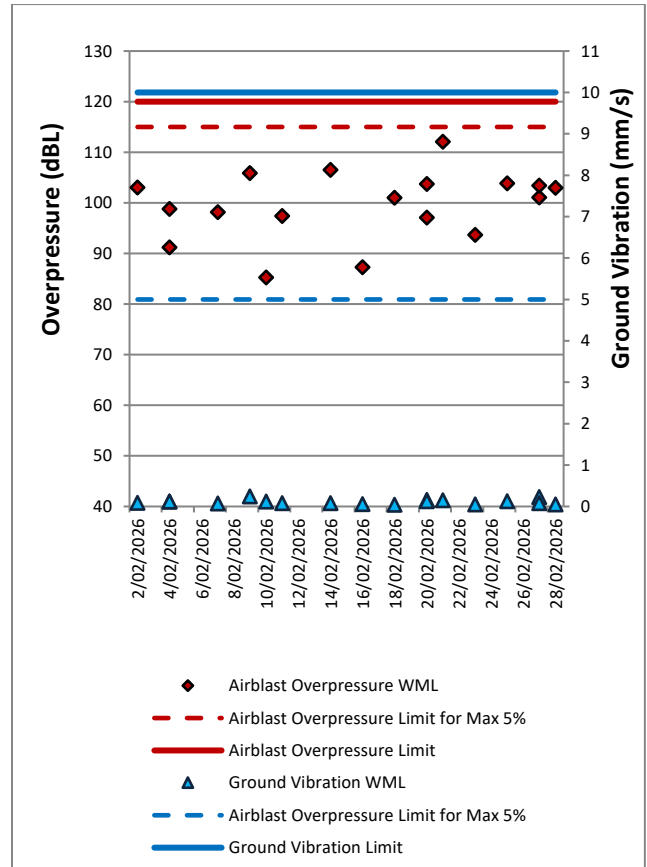


Figure 11: Putty Road MTIE Blast Monitoring Results – February 2026

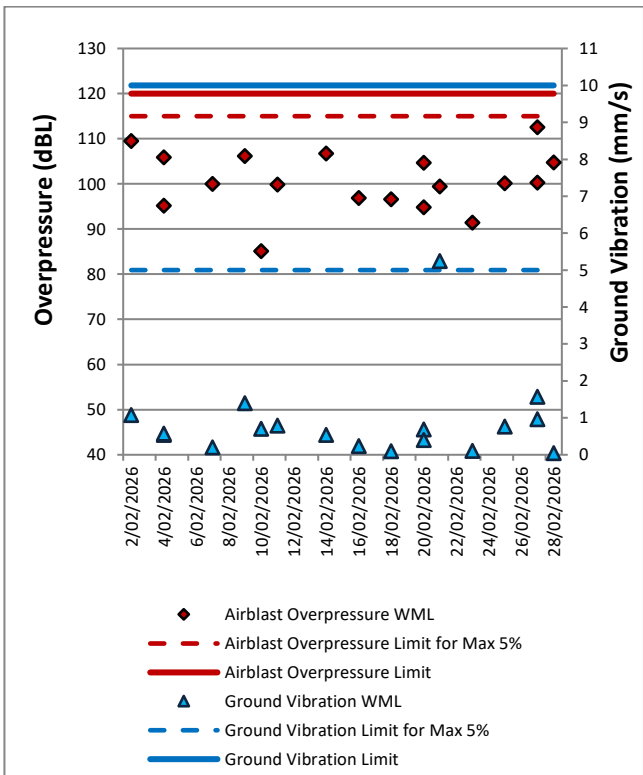


Figure 10: Bulga Village Blast Monitoring Results – February 2026

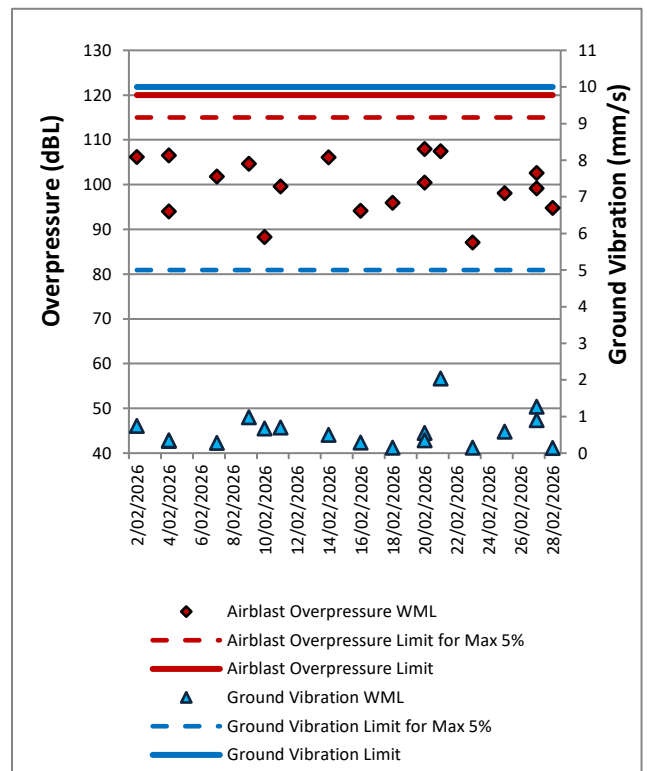


Figure 12: Wollemi Peak Road Blast Monitoring Results – February 2026

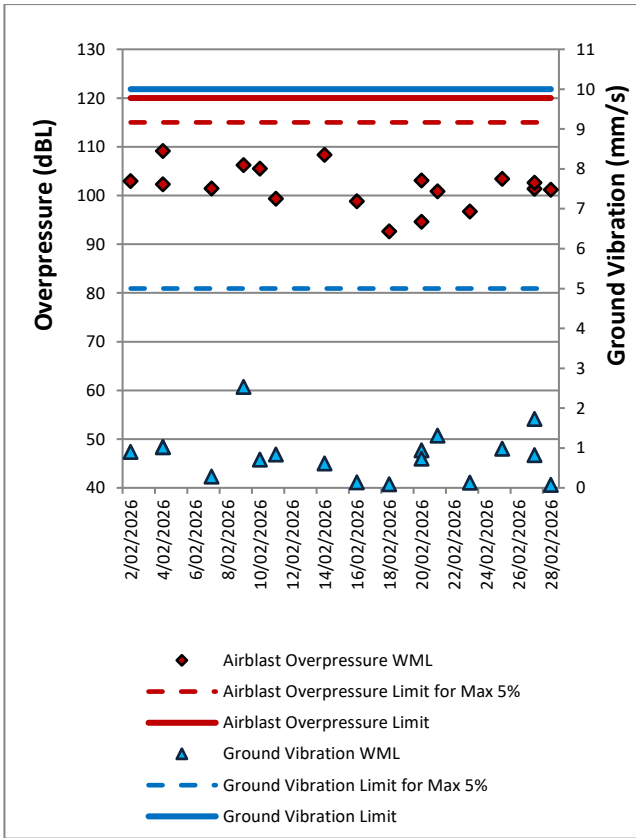


Figure 13: Wambo Road Blast Monitoring Results – February 2026

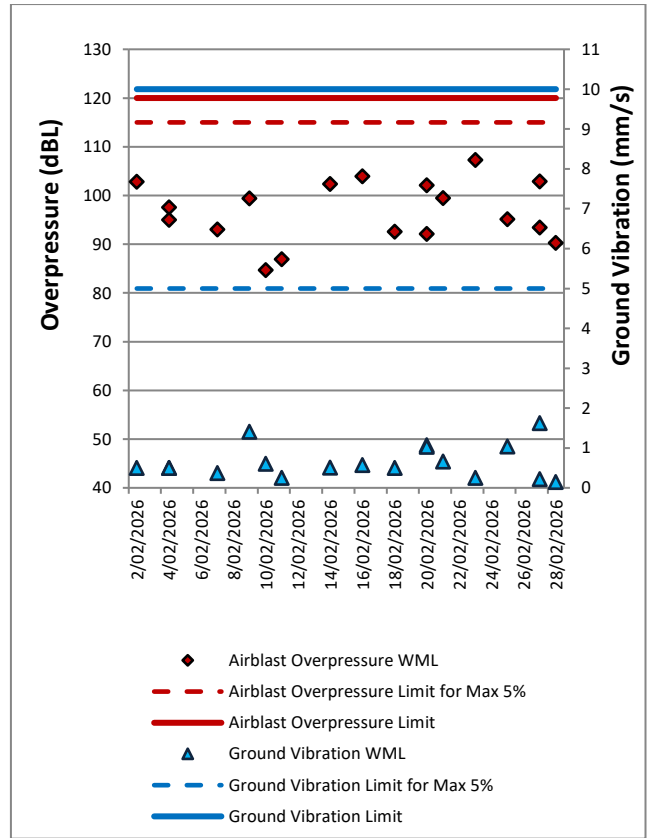


Figure 14: Warkworth Blast Monitoring Results – February 2026



Figure 15: MTW Blast Monitoring Location Plan

5.0 NOISE

Routine attended noise monitoring is carried out in accordance with the MTW Noise Management Plan. A review against EIS predictions will be reported in the Annual Review. The purpose of the noise surveys is to quantify and describe the acoustic environment around the site and compare results with specified limits. Real time noise monitoring also occurs at five sites surrounding MTW. Noise monitoring locations are displayed in **Figure 16**.

5.1 Attended Noise Monitoring Results

Attended monitoring was conducted at receiver locations surrounding MTW on the night of 4 February 2026. Measurements complied with the relevant criteria.

5.1.1 WML Noise Assessment

Compliance assessments undertaken against the WML noise criteria are presented in **Table 3** and **Table 4**.

Table 3: L_{Aeq, 15 minute} Warkworth Impact Assessment Criteria – February 2026

Location	Start Date and Time	Wind Speed (m/s)	Stability Class	Criterion dB(A)	Criterion Applies? ¹	WML L _{Aeq, 15minute} dB ²	Exceedances ³
Bulga RFS	4/02/2026 23:28	0.9	F	37	Yes	26	Nil
Bulga Village	4/02/2026 22:12	2	F	38	Yes	31	Nil
Gouldsville	4/02/2026 21:21	3.2	E	38	No	<20	N/A
Inlet Road	4/02/2026 21:23	3.1	E	37	No	33	N/A
Inlet Road West	4/02/2026 21:00	3.4	E	35	No	31	N/A
Long Point	4/02/2026 21:00	3.4	E	35	No	IA	N/A
South Bulga	4/02/2026 22:38	1.3	F	35	Yes	IA	Nil
Wambo Road	4/02/2026 21:47	2.9	E	38	Yes	32	Nil

Notes:

1. Noise limits are applicable if weather conditions were within parameters specified in Section 2.4. Criterion may or may not apply due to rounding of meteorological data values.
2. Site-only L_{Aeq, 15minute}, includes modifying factor penalties if applicable.
3. Bold results in red indicate exceedance of relevant criterion.

Table 4: L_{A1, 1 minute} Warkworth - Impact Assessment Criteria – February 2026

Location	Start Date and Time	Wind Speed (m/s)	Stability Class	Criterion dB(A)	Criterion Applies? ¹	WML L _{A1, 1min} dB ²	Exceedances ³
Bulga RFS	4/02/2026 23:28	0.9	F	47	Yes	30	Nil
Bulga Village	4/02/2026 22:12	2	F	48	Yes	35	Nil
Gouldsville	4/02/2026 21:21	3.2	E	48	No	<20	N/A
Inlet Road	4/02/2026 21:23	3.1	E	47	No	37	N/A
Inlet Road West	4/02/2026 21:00	3.4	E	45	No	36	N/A
Long Point	4/02/2026 21:00	3.4	E	45	No	IA	N/A
South Bulga	4/02/2026 22:38	1.3	F	45	Yes	IA	Nil
Wambo Road	4/02/2026 21:47	2.9	E	48	Yes	35	Nil

Notes:

1. Noise limits are applicable if weather conditions were within parameters specified in Section 2.4. Criterion may or may not apply due to rounding of meteorological data values.
2. Site-only L_{A1, 1minute}, includes modifying factor penalties if applicable.
3. Bold results in red indicate exceedance of relevant criterion.

5.1.2 MTO Noise Assessment

Compliance assessments undertaken against the MTO noise criteria are presented in **Table 5** and **Table 6**.

Table 5: L_{Aeq, 15minute} Mount Thorley - Impact Assessment Criteria – February 2026

Location	Start Date and Time	Wind Speed (m/s)	Stability Class	Criterion dB	Criterion Applies? ¹	MTO L _{Aeq, 15minute} dB ²	Exceedances ³
Bulga RFS	4/02/2026 23:28	0.9	F	37	Yes	26	Nil
Bulga Village	4/02/2026 22:12	2	F	38	Yes	<20	Nil
Gouldsville	4/02/2026 21:21	3.2	E	35	No	IA	N/A
Inlet Road	4/02/2026 21:23	3.1	E	37	No	<25	N/A
Inlet Road West	4/02/2026 21:00	3.4	E	35	No	<25	N/A
Long Point	4/02/2026 21:00	3.4	E	35	No	IA	N/A
South Bulga	4/02/2026 22:38	1.3	F	36	Yes	<20	Nil
Wambo Road	4/02/2026 21:47	2.9	E	38	Yes	<20	Nil

Notes:

1. Noise limits are applicable if weather conditions were within parameters specified in Section 2.4. Criterion may or may not apply due to rounding of meteorological data values.
2. Site-only L_{Aeq, 15minute}, includes modifying factor penalties if applicable.
3. Bold results in red indicate exceedance of relevant criterion.

Table 6: LA_{1, 1Minute} Mount Thorley - Impact Assessment Criteria – February 2026

Location	Date and Time	Wind Speed (m/s)	Stability Class	Criterion dB	Criterion Applies? ¹	MTO LA _{1, 1min} dB ²	Exceedances ³
Bulga RFS	4/02/2026 23:28	0.9	F	47	Yes	30	Nil
Bulga Village	4/02/2026 22:12	2	F	48	Yes	<20	Nil
Gouldsville	4/02/2026 21:21	3.2	E	45	No	IA	N/A
Inlet Road	4/02/2026 21:23	3.1	E	47	No	<25	N/A
Inlet Road West	4/02/2026 21:00	3.4	E	45	No	<25	N/A
Long Point	4/02/2026 21:00	3.4	E	45	No	IA	N/A
South Bulga	4/02/2026 22:38	1.3	F	46	Yes	<20	Nil
Wambo Road	4/02/2026 21:47	2.9	E	48	Yes	<20	Nil

Notes:

1. Noise limits are applicable if weather conditions were within parameters specified in Section 2.4. Criterion may or may not apply due to rounding of meteorological data values.
2. Site-only LA_{1, 1minute}, includes modifying factor penalties if applicable.
3. Bold results in red indicate exceedance of relevant criterion.

5.1.3 NPfl Low Frequency Assessment

In accordance with the requirements of the EPA’s Noise Policy for Industry (NPfl), the applicability of the low frequency modification factor corrections has been assessed. There were no noise measurements taken during the reporting period which required the penalty to be applied.

The WML assessment for low frequency noise is shown in **Table 7** and the MTO assessment for low frequency noise is shown in **Table 8**.

Table 7: Warkworth Low Frequency Noise Assessment – February 2026

Location	Date and Time	Measured WML LAeq dB	Criterion Applies?	Intermittency Modifying Factor? ¹	Tonality Modifying Factor? ¹	Frequency of Tonality ¹	Low-frequency Modifying Factor?	Maximum Exceedance of Reference Spectrum ^{1,2}	Penalty dB ²
Bulga RFS	4/02/2026 23:28	26	Yes	No	No	N/A	No	N/A	Nil
Bulga Village	4/02/2026 22:12	31	Yes	No	No	N/A	No	N/A	Nil
Gouldsville	4/02/2026 21:21	<20	No	No	No	N/A	N/A	N/A	Nil
Inlet Road	4/02/2026 21:23	33	No	No	No	N/A	N/A	N/A	Nil
Inlet Road West	4/02/2026 21:00	31	No	No	No	N/A	N/A	N/A	Nil
Long Point	4/02/2026 21:00	IA	No	No	No	N/A	N/A	N/A	Nil
South Bulga	4/02/2026 22:38	IA	Yes	No	No	N/A	No	N/A	Nil
Wambo Road	4/02/2026 21:47	32	Yes	No	No	N/A	No	N/A	Nil

Notes:

1. Yes/No denote modifying factor was or was not applied. N/A denotes assessment was ‘not applicable’ due to meteorological conditions or further assessment was not required.

2. Bold results indicate that application of NPfl modifying factor/s is required.

Table 8: Mount Thorley Operations Low Frequency Noise Assessment – February 2026

Location	Date and Time	Measured MTO LAeq dB	Criterion Applies?	Intermittency Modifying Factor? ¹	Tonality Modifying Factor? ¹	Frequency of Tonality ¹	Low-frequency Modifying Factor? ¹	Maximum Exceedance of Reference Spectrum ^{1,2}	Penalty dB ²
Bulga RFS	4/02/2026 23:28	26	Yes	No	No	N/A	No	N/A	Nil
Bulga Village	4/02/2026 22:12	<20	Yes	No	No	N/A	No	N/A	Nil
Gouldsville	4/02/2026 21:21	IA	No	No	No	N/A	N/A	N/A	Nil
Inlet Road	4/02/2026 21:23	<25	No	No	No	N/A	N/A	N/A	Nil
Inlet Road West	4/02/2026 21:00	<25	No	No	No	N/A	N/A	N/A	Nil
Long Point	4/02/2026 21:00	IA	No	No	No	N/A	N/A	N/A	Nil
South Bulga	4/02/2026 22:38	<20	Yes	No	No	N/A	No	N/A	Nil
Wambo Road	4/02/2026 21:47	<20	Yes	No	No	N/A	No	N/A	Nil

Notes:

1. Yes/No denote modifying factor was or was not applied. N/A denotes assessment was 'not applicable' due to meteorological conditions or further assessment was not required.

2. Bold results indicate that application of NPfI modifying factor/s is required.

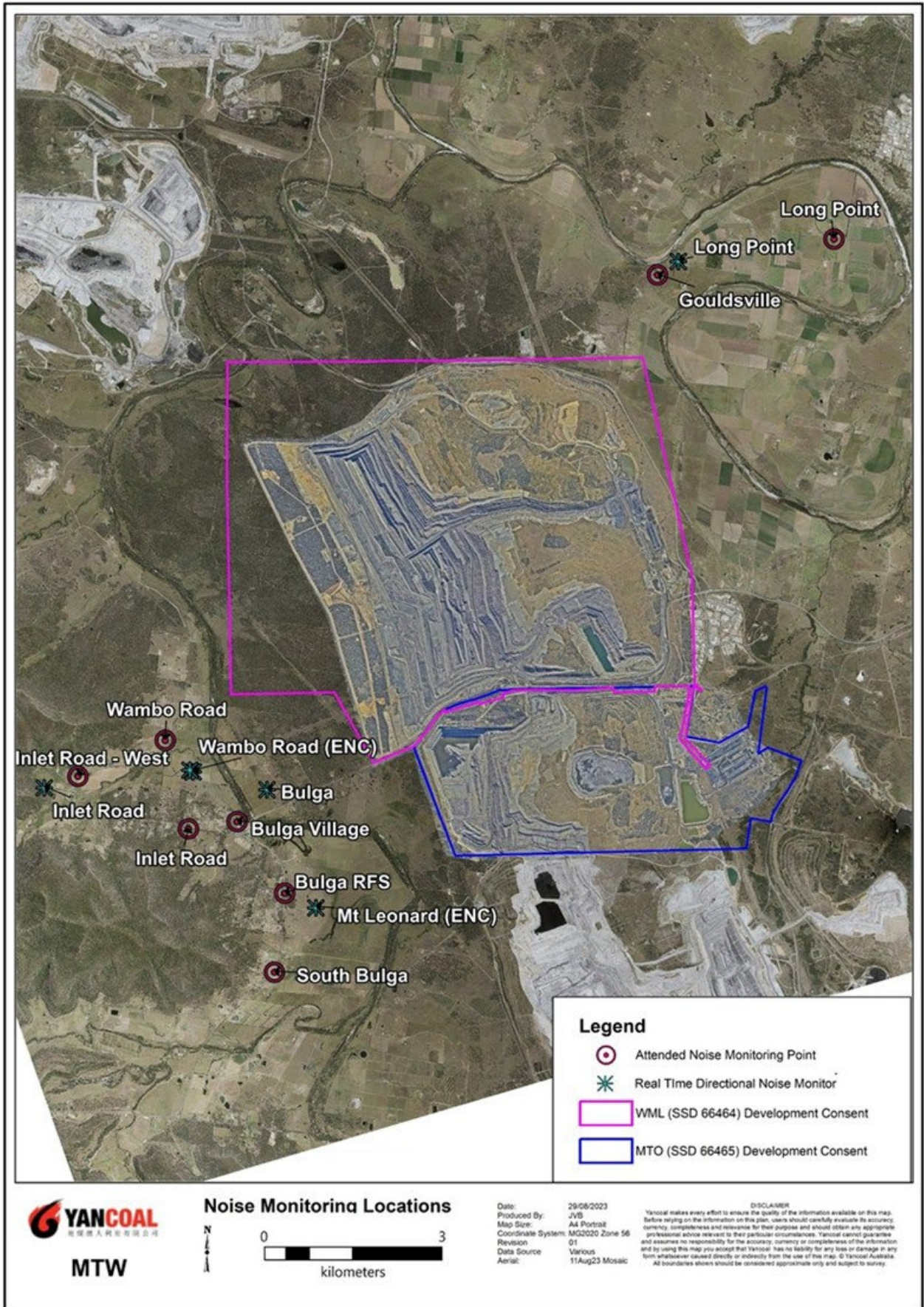


Figure 16: Noise Monitoring Location Plan

5.2 Noise Management Measures

A program of targeted supplementary attended noise monitoring is in place at MTW, supported by the real-time directional monitoring network and ensuring the highest level of noise management is maintained. The supplementary program is undertaken by MTW personnel and involves:

- Routine inspections from both inside and outside the mine boundary;
- Routine and as-required handheld noise assessments (undertaken in response to noise alarm and/or community complaint), comparing measured levels against consent noise limits; and
- Validation monitoring following operational modifications to assess the adequacy of the modifications.

Where a noise assessment identifies noise emissions which are exceeding the relevant noise limit(s) for any particular residence, modifications will be made to ensure that the noise event is resolved within 75 minutes of identification. The actions taken are commensurate with the nature and severity of the noise event, but can include:

- Changing the haul route to a less noise sensitive haul;
- Changing dump locations (in-pit or less exposed dump option);
- Reducing equipment numbers;
- Shut down of task; or
- Site shut down.

A summary of these assessments undertaken during the reporting period are provided in **Table 9**.

Table 9: Supplementary Attended Noise Monitoring Data – February 2026

No. of assessments	No. of assessments > trigger	No. of nights where assessments > trigger	% greater than trigger
584	5	3	0.9

6.0 OPERATIONAL DOWNTIME

During February, a total of 375 hours of equipment downtime was logged in response to environmental events such as dust, noise and adverse meteorological conditions. Operational downtime by equipment type is shown in **Figure 17**.

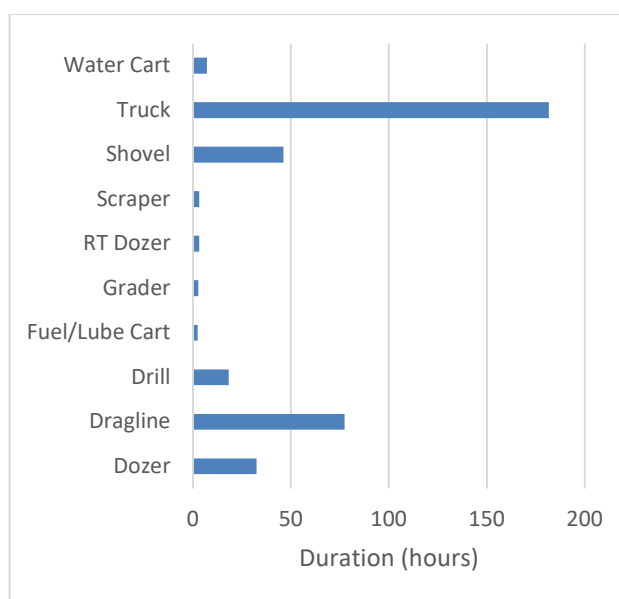


Figure 17: Operational Downtime by Equipment Type – February 2026

7.0 REHABILITATION

During February 2026, 14.9 Ha of land was released, 8.2 Ha was bulk shaped, 5.7 Ha was topsoiled, 16.3 Ha was composted, and 19.1 Ha was rehabilitated (seeded).

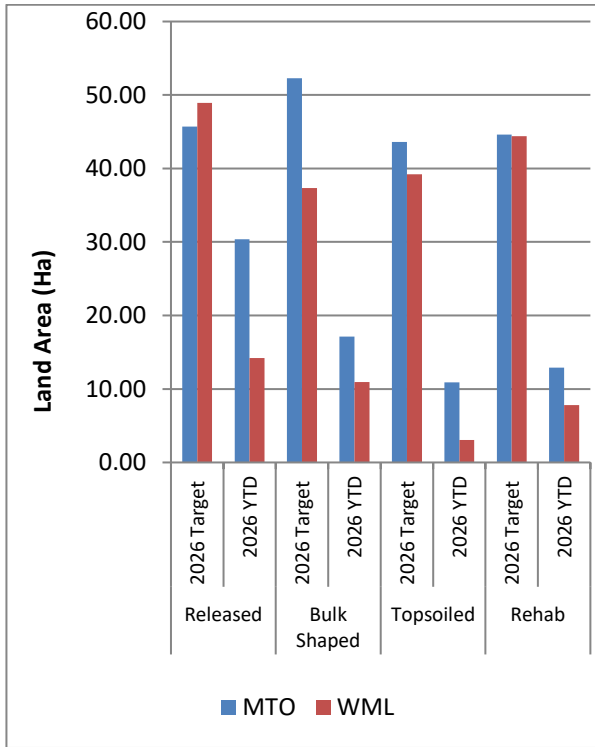


Figure 18: Rehabilitation YTD – February 2026

8.0 ENVIRONMENTAL INCIDENTS

There were no environmental incidents recorded during the reporting period.

9.0 COMPLAINTS

Three complaints were received during the reporting period. Details of these complaints are shown in Table 10.

Table 10: Complaints Summary YTD

	Noise	Dust	Blast	Lighting	Other	Total
January	0	4	0	0	0	4
February	1	1	1	0	0	3
March						
April						
May						
June						
July						
August						
September						
October						
November						
December						
Total	1	5	1	0	0	7

Appendix A: Meteorological Data

Table 11: Meteorological Data – Charlton Ridge Meteorological Station – February 2026

Date	Air Temperature		Relative Humidity		Wind Direction	Wind Speed	Rainfall
	Maximum (°C)	Minimum (°C)	Maximum (%)	Minimum (%)	Average (°)	Average (m/sec)	total (mm)
1/02/2026	41	19	100	28	181	2.4	2.8
2/02/2026	39	19	99	48	158	4.4	0.2
3/02/2026	22	15	92	44	145	3.2	0.0
4/02/2026	27	14	90	32	171	2.3	0.0
5/02/2026	33	14	91	21	265	2.3	0.0
6/02/2026	39	16	95	25	150	3.0	5.2
7/02/2026	38	19	91	26	148	2.3	0.4
8/02/2026	36	20	92	57	180	2.3	0.0
9/02/2026	25	19	100	64	275	2.6	2.0
10/02/2026	26	18	100	45	173	1.6	0.0
11/02/2026	32	18	100	24	196	1.9	0.0
12/02/2026	38	17	100	29	216	3.0	0.6
13/02/2026	34	15	100	62	160	3.5	0.2
14/02/2026	22	15	94	37	134	3.4	0.0
15/02/2026	28	15	86	38	123	2.8	0.0
16/02/2026	30	17	100	48	146	3.1	0.8
17/02/2026	27	15	99	28	142	1.9	0.0
18/02/2026	32	13	88	23	270	2.7	0.0
19/02/2026	38	17	91	37	147	2.7	0.0
20/02/2026	36	20	92	50	118	2.9	0.0
21/02/2026	32	21	100	31	287	3.4	23.4
22/02/2026	38	19	100	30	220	2.2	0.0
23/02/2026	35	18	84	36	212	2.4	0.0
24/02/2026	33	22	100	24	137	2.3	0.0
25/02/2026	35	19	93	29	200	2.7	0.0
26/02/2026	37	17	93	37	150	4.0	0.0
27/02/2026	31	20	97	54	146	3.4	0.0
28/02/2026	29	18	87	49	137	3.5	0.0