

JUNE 2026

COMMUNITY NEWSLETTER

Mine Closure Approach

Austar is undertaking mine closure planning and execution works to decommission and rehabilitate the site. The aim is to return the land to a safe, stable and non-polluting condition, to the satisfaction of the NSW Resources Regulator and other appropriate stakeholders.

For over 100 years, Austar has been a proud part of the Cessnock community, contributing to local jobs, economic growth and regional development. Our focus on responsible closure and rehabilitation reflects our commitment to ensuring a lasting legacy for our community.

What's happened on site?

Demolition works form part of the broader mine closure program that has been underway since coal mining operations ceased in March 2020. Building on the activities outlined in our previous newsletter, staged demolition of the Kalingo Infrastructure Area, Pit Top and the Coal Handling and Preparation Plant (CHPP), including the overland conveyor between Pit Top and CHPP, were undertaken throughout 2025 and the first half of 2026. These works have progressively changed the appearance of the site.

What's happening next?

- Continued decommissioning and demolition of mining infrastructure to prepare the site for the next stage of rehabilitation.
- Decommission Kalingo Dam and associated rehabilitation and revegetation in accordance with Austar's Rehabilitation Management Plan.

Community Consultative Committee

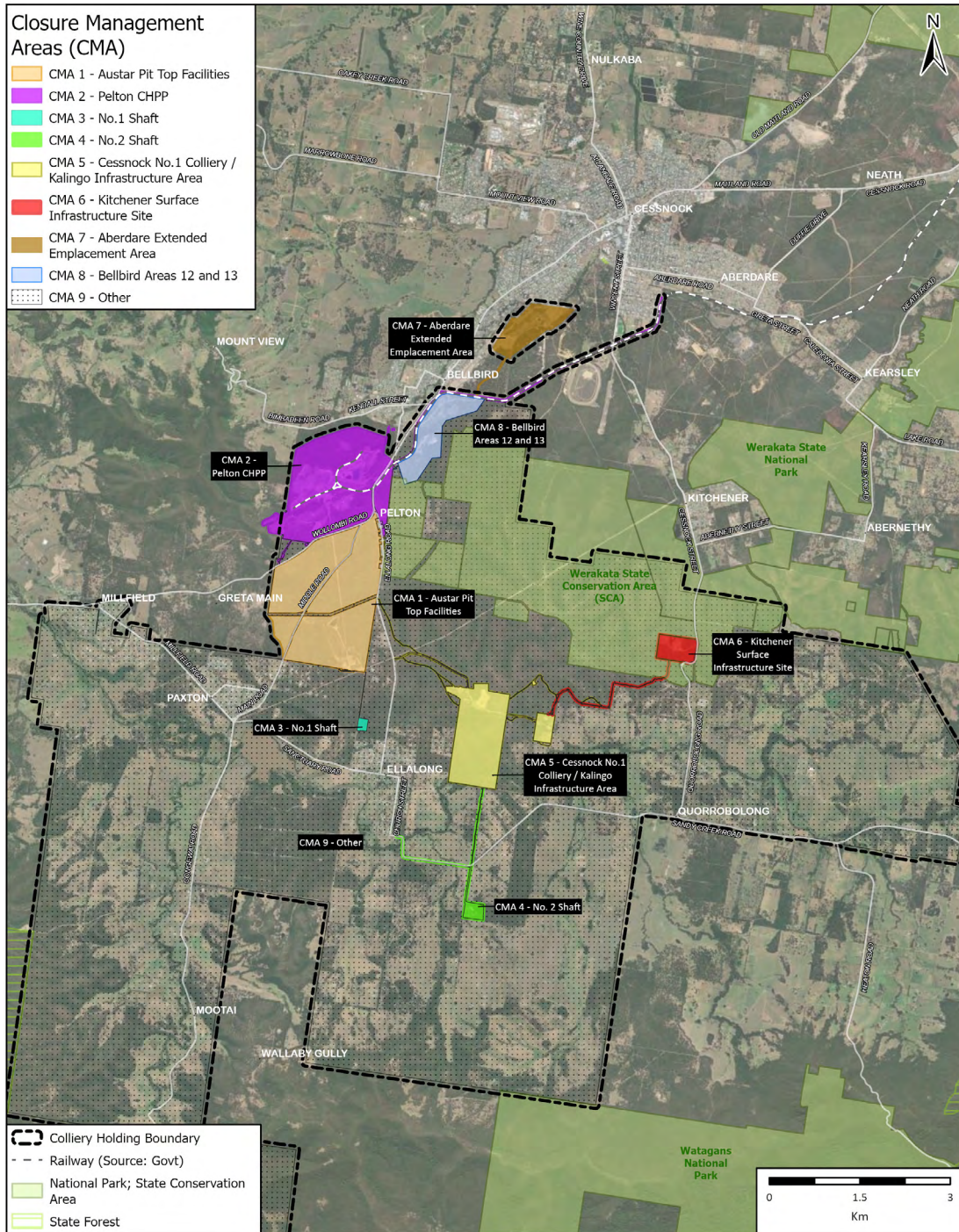
We are committed to keeping the community informed as mine closure planning, decommissioning and rehabilitation works progress at Austar Coal Mine. Yancoal is currently inviting nominations to join the Community Consultative Committee (CCC), an important forum that brings together community members, local government, stakeholders and Yancoal representatives.

The CCC meets at least annually, with additional meetings held as needed, to share information about site activities and environmental performance and to provide an opportunity for community feedback. While the CCC does not make decisions or regulate the project, it plays an important role by supporting open communication and discussion on issues such as community concerns, proposed changes, and monitoring results.

The next CCC meeting is scheduled for late 2026. Community members and local stakeholders interested in joining the committee are encouraged to get in touch with our Independent Chair, Lisa Andrews on 0401 609 693 or email the Austar team at austar.feedback@yancoal.com.au



Austar Coal Mine Closure Management Areas (CMAs)



Yancoal makes every effort to ensure the quality of the information available on this map. Before relying on the information on this plan, users should carefully evaluate its accuracy, currency, completeness and relevance for their purpose and should obtain any appropriate professional advice relevant to their particular circumstances. Yancoal cannot guarantee and assumes no responsibility for the accuracy, currency or completeness of the information and by using this map you accept that Yancoal has no liability for any loss or damage in any form whatsoever caused directly or indirectly from the use of this map. All datasets subject to survey.



Rehabilitation Management

Mine closure planning is a complex and long-term process. Austar continues to progress detailed planning to support ongoing rehabilitation of the site to achieve a condition that is safe, stable and non-polluting and that meets applicable regulatory requirements.

Our Rehabilitation Management Plan (RMP) was updated in February and is publicly available on the Austar website in the mine closure section. The plan outlines the rehabilitation and closure objectives as agreed with relevant regulators and as required under NSW legislation. It also provides the framework for how closure and rehabilitation activities are planned to be delivered.

The Plan has been prepared to document current and planned rehabilitation and closure activities. It will be updated as closure activities and schedules are further defined.

The Rehabilitation Management Plan forms a key part of Austar's closure strategy and provides transparency on the approach to achieving rehabilitation outcomes over time.



Anyone interested in learning more about the rehabilitation plans can access the Rehabilitation Management Plan and associated documents at:

yancoal.com.au/our-sites/austar

Land Validation Investigations

Environmental investigations across prior mining and surface support infrastructure (Closure Management Areas) have been undertaken over several years to better understand land quality and inform closure planning.

Since closure was announced, hundreds of boreholes and test pit samples have been taken across the site to assess land quality in areas associated with historical operations.

Soil sampling has been carried out in relevant areas to inform any remediation works that may be required to meet appropriate health and environmental criteria and to enable a productive post-mining land use. Any demolition materials that are identified for potential re-use are tested to ensure compliance with contamination and resource recovery guidelines.

Land validation investigations to date indicate that remediation requirements are limited and localised in extent.

The findings will continue to inform closure planning, along with future investigations, to ensure rehabilitation activities are undertaken in accordance with environmental and regulatory requirements.





Borehole Rehabilitation Program

Austar is planning to rehabilitate around 120 historic boreholes across the site and surrounding areas as part of the ongoing closure program.

Many of these boreholes date back to exploration activities undertaken between the late 1800s and the 1990s. All boreholes drilled by Austar during more recent operations have already been rehabilitated.

Some boreholes identified for rehabilitation are located on private land and within nearby conservation areas. Rehabilitation works in these locations and elsewhere across Austar lands will be undertaken subject to the necessary approvals and access arrangements being established with relevant landholders, National Parks and Crown Land before rehabilitation works commence.



Authorisation of Future Closure Activities

Austar continues to prepare for the next phase of mine closure and rehabilitation. As part of this process, the company is preparing an application to modify the development consent for the mine. The proposed modification is intended to ensure approvals appropriately address the remaining closure and rehabilitation activities and align with contemporary regulatory requirements.

Community Support Program

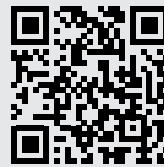
Austar's Community Support Program continues to fund local initiatives that are designed to deliver positive outcomes for community groups working in our region.

In 2026, a number of local organisations have been awarded funding through the program. These initiatives support a range of activities across education, community development and local services.

In addition to the annual Community Support Program, Austar continues to support the Cessnock City Council Mayoral Scholarship Program, and we congratulate this year's recipients.

How we're keeping you informed

We remain committed to transparent, timely communication. Updates are shared via the Yancoal website, regular e-newsletters and letterbox drops, while our online contact form and dedicated email (austar.feedback@yancoal.com.au) provide easy channels for questions and feedback.



If you'd like to stay informed about the progress of mine closure, rehabilitation efforts and the history of the site, we invite you to join our mailing list via scanning the QR code.

Yancoal values the privacy of individuals we interact with, from our customers and employees to our external business contacts.

For more information, search Privacy on our website yancoal.com.au